
COSTUME PROPOSAL

Three Sisters

MASHA



FULL LOOK (1)

WINTER LOOKS (2) - (4)

STATES OF UNDRRESS (5) - (8)

FULL LOOK (9) - (10)

IDENTIFIER

Colour - Black and Grey

Detail - Pleats

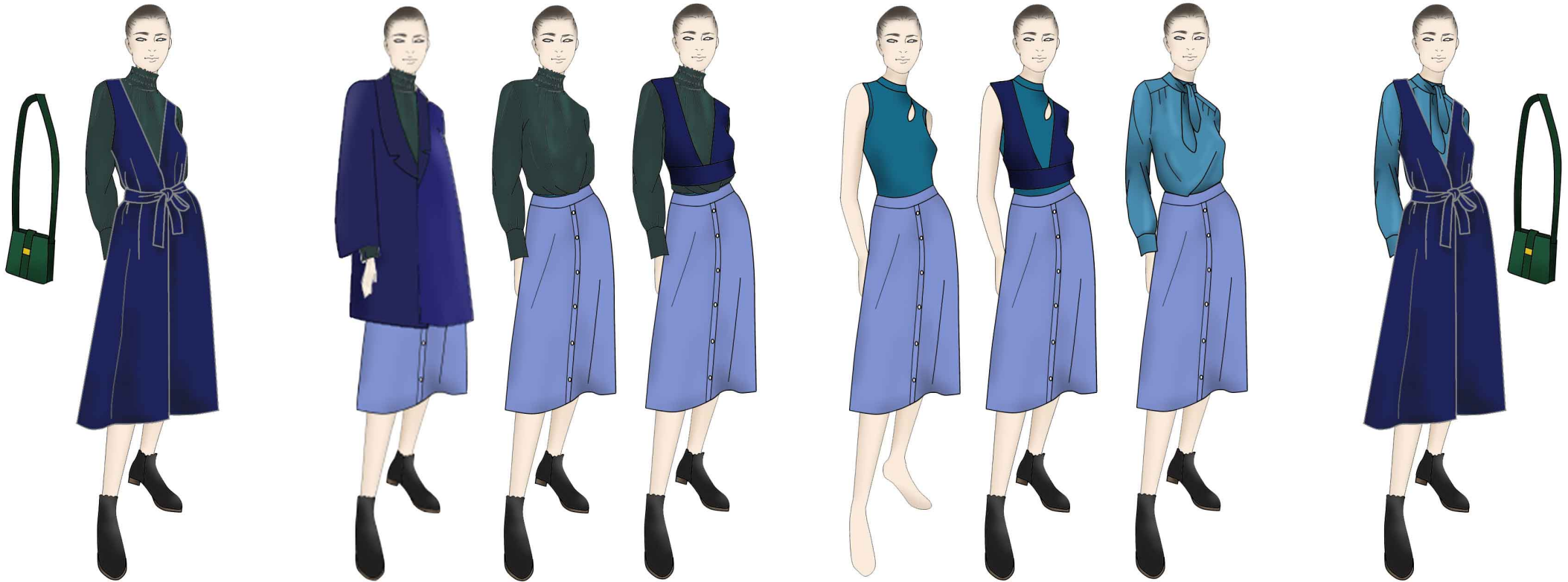
GARMENT TYPES

Base - Square neck T-shirt + Cropped jeggings

Layers - Scrunch Top, Knit cardigan, Pleated skirt, Velvet pleated dress

Shoes - Laced knee-high boots with side zip

OLGA



FULL LOOK (1)

WINTER LOOKS (2) - (4)

STATES OF UNDRESS (5) - (7)

FULL LOOK (8)

IDENTIFIER

Colour - Shades of blue and green

Detail - Pinafore

GARMENT TYPES

Base - Cutout Singlet + Button skirt

Layers - High-collared top, Bow shirt, V-neck vest, Plunged-neck pinafore

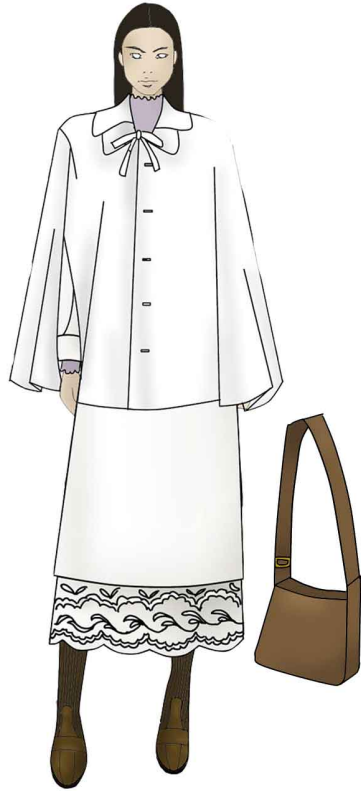
Shoes - Suede low-cut boots

Accessories - Sling bag

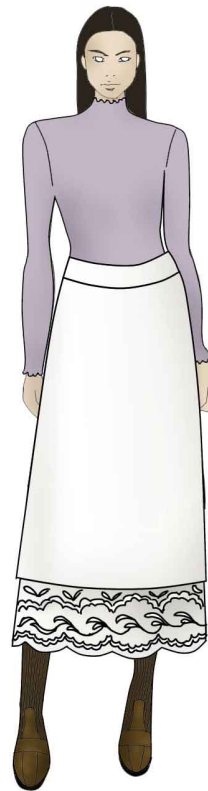
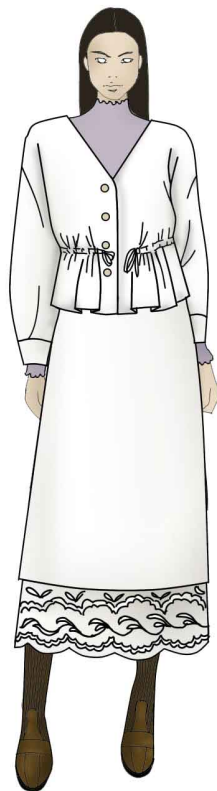
IRINA



FULL LOOK (1)



WINTER LOOKS (2) - (3)



STATES OF UNDRESS (4) - (7)



FULL LOOK (8)

IDENTIFIER

Colour - White and dusty Lavender

Detail - Lace

GARMENT TYPES

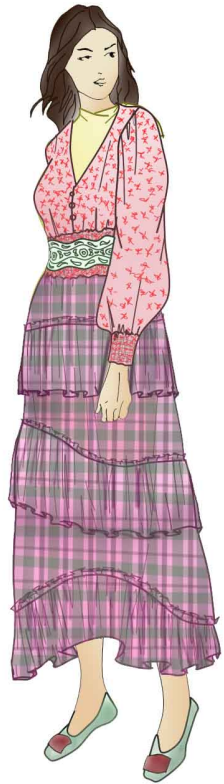
Base - Long-sleeve t-shirt + Culottest

Layers - Drawstring top, Sheer embroidered top, Layered skirt, Asymmetrical dress

Shoes - Slip-on boots with knit detail

Accessories - Sling bag

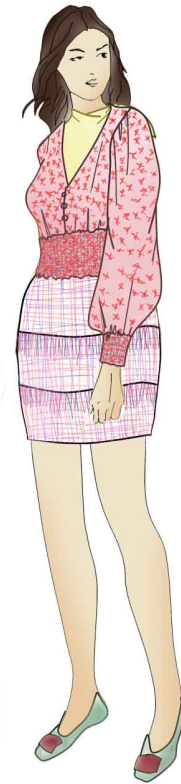
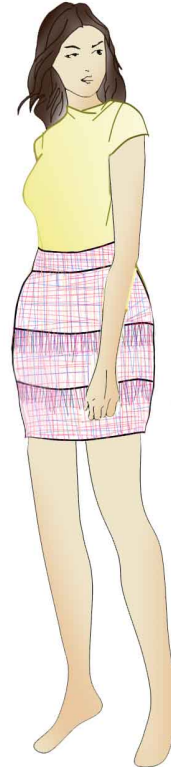
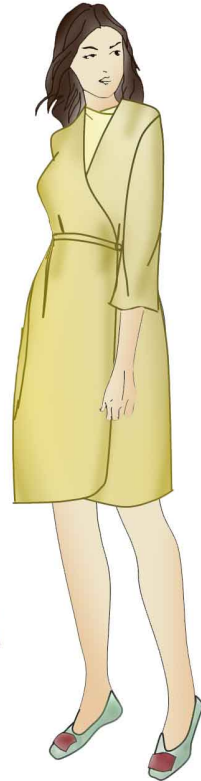
NATASHA



FULL LOOK (1)



NIGHTGOWN / WINTER LOOKS (2) - (3)



STATES OF UNDRESS (4) - (6)



FULL LOOK (7)

IDENTIFIER

Colour - Shades of pink and red

Detail - Prints and belt

GARMENT TYPES

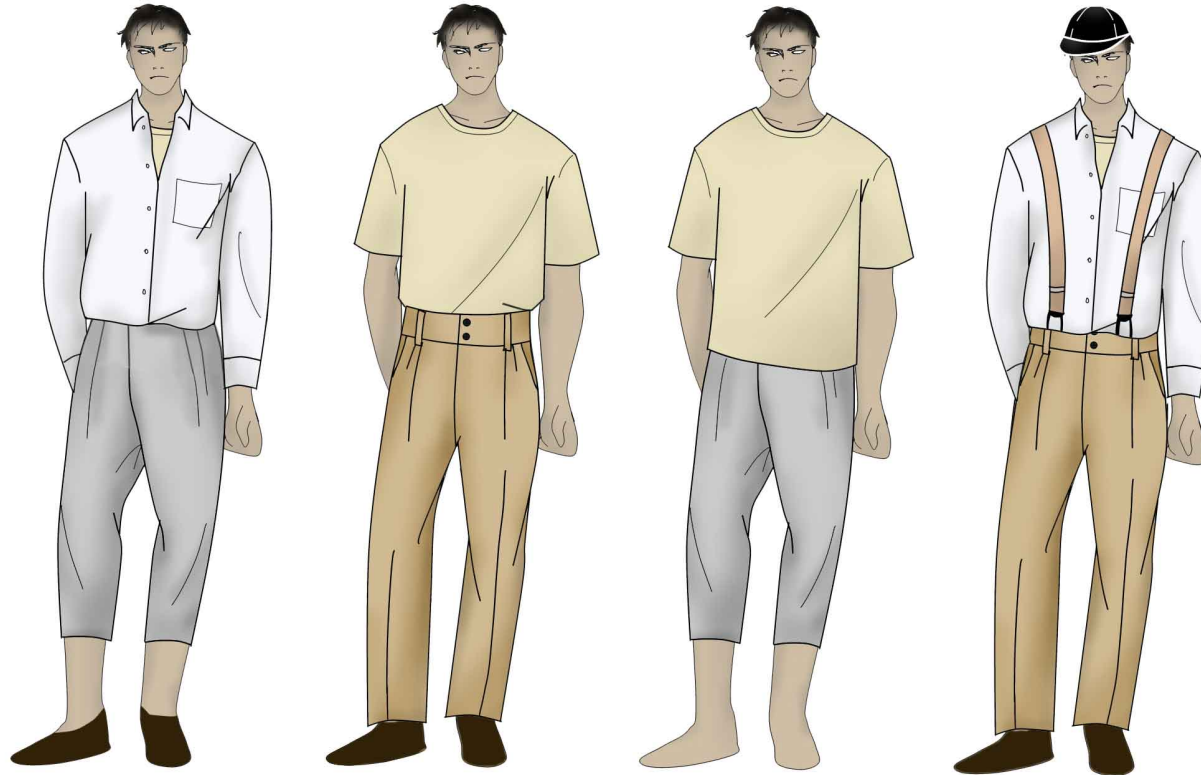
Base - Draped neck T-shirt + Mini skirt

Layers - Floral blouse, Asymmetrical layered skirt, Wrap-style nightwear, Abstract print blouse, Asymmetrical circular skirt

Shoes - Pumps

Accessories - Laced belt, Brocade obi belt

ANDREI



FULL LOOK (1)

WINTER LOOK (2)

STATE OF UNDRESS (3)

FULL LOOK (4)

IDENTIFIER

Colour - Khaki and Grey

Detail - Suspenders

GARMENT TYPES

Base - Basic T-shirt + Knit cropped joggers

Layers - Long-sleeve shirt, Bow shirt, High-waisted pleated pants, Suspenders

Shoes - Laced leather shoes

Accessories - Baseball cap

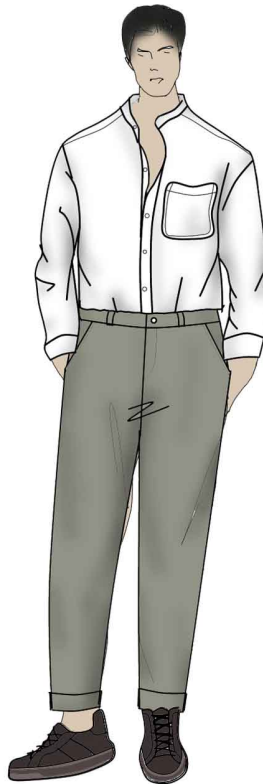
TUZENBACH



FULL LOOK (1)



WINTER LOOK (2)



STATE OF UNDRESS (3)



FULL LOOK (4)

IDENTIFIER

Colour - Greyish green and white

Detail - Scarf

GARMENT TYPES

Base - Mandarin collar shirt + Cuffed pants

Layers - Tailored blouson jacket, Cuffed pants

Shoes - Pleather sneakers

Accessories - Satin scarf

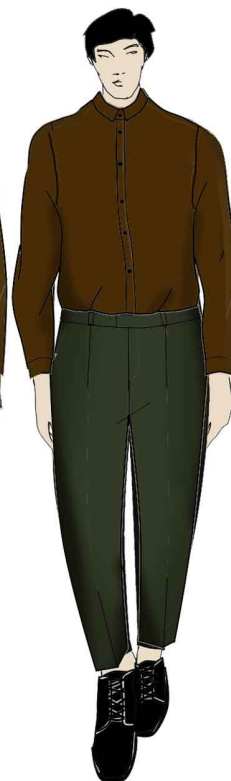
VERSHININ



FULL LOOK (1)



WINTER LOOK (2)



STATES OF UNDRESS (3) - (6)



FULL LOOK (7)

IDENTIFIER

Colour - Forest green and brown

Detail - Trench, Tailored vest

GARMENT TYPES

Base - Turtleneck + Jeggings

Layers - Trenchcoat, Collared shirt, Tailored pants, Tailored vest

Shoes - Laced leather shoes

Accessories - Fedora hat

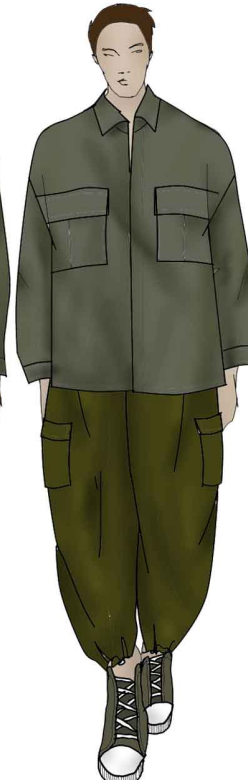
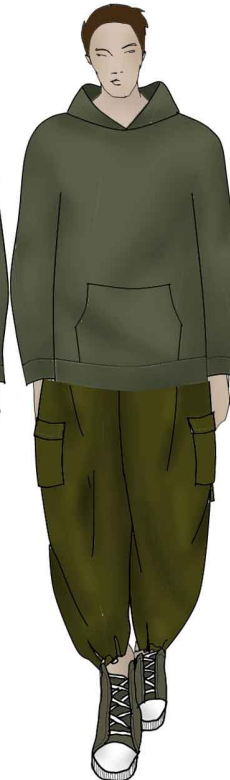
SOLYONY



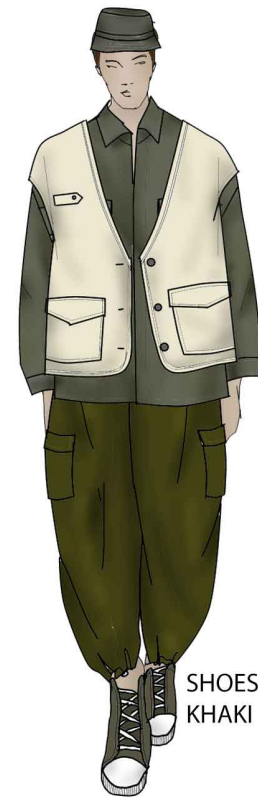
FULL LOOK (1)



WINTER LOOK (2)



STATES OF UNDRESS (3) - (5)



SHOES CHANGE TO HIGH CUT
KHAKI GREEN SNEAKERS

FULL LOOK (6)

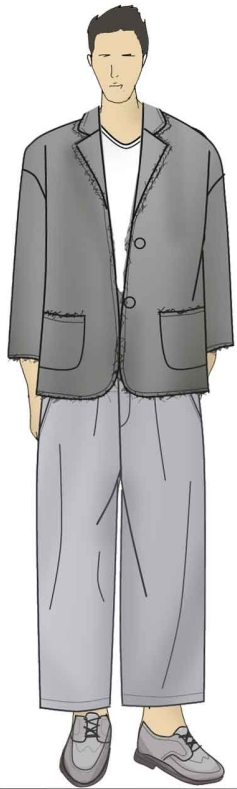
IDENTIFIER

Colour - Military green and khaki
Detail - Cargo pockets, hoodie

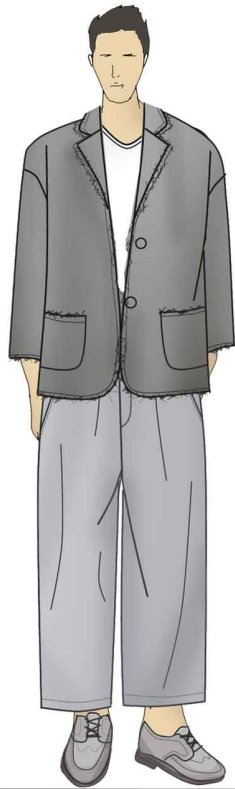
GARMENT TYPES

Base - Hoodie + Joggers
Layers - Oversized cargo pants, Boxy cargo vest, Collared shirt with cargo pockets
Shoes - Canvas sneakers
Accessories - Bucket hat

CHEBUTYKIN



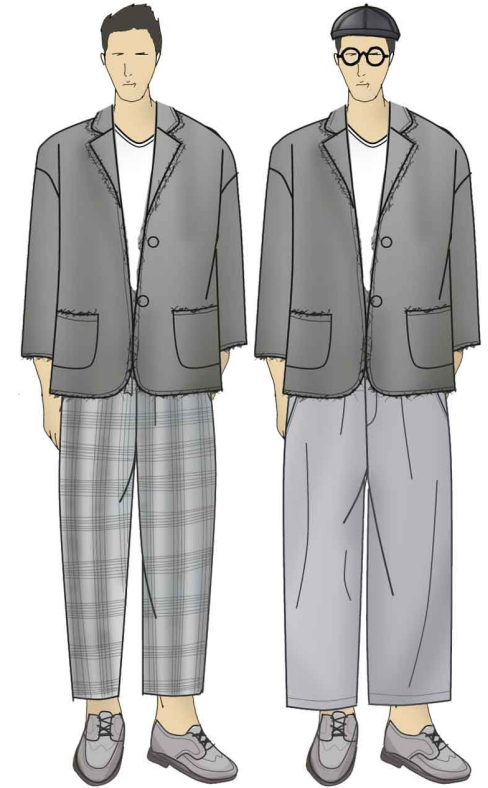
FULL LOOK (1)



WINTER LOOK (2)



STATES OF UNDRRESS (3) - (4)



FULL LOOK OPTION (5) - (6)

IDENTIFIER

Colour - Shades of grey

Detail - Distressed garments, reading glasses

GARMENT TYPES

Base - V-neck loose T-shirt + Checkered slacks

Layers - Distressed blazer, Linen slacks

Shoes - Vintage-look ankle boots

Accessories - Reading glasses, Beanie cap

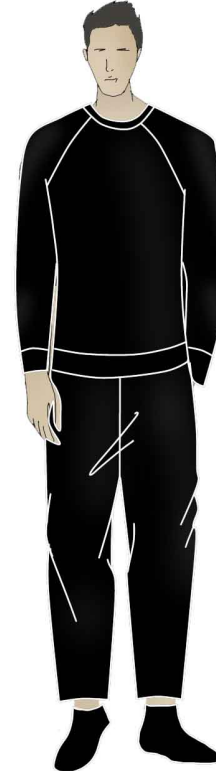
KULYGIN



FULL LOOK (1)



WINTER LOOK (2)



STATE OF UNDRESS (3)



FULL LOOK (4)

IDENTIFIER

Colour - Tan / Camel

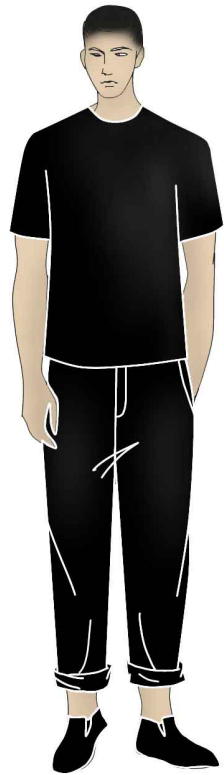
Detail - Knit Sweater / Knit Blazer

GARMENT TYPES

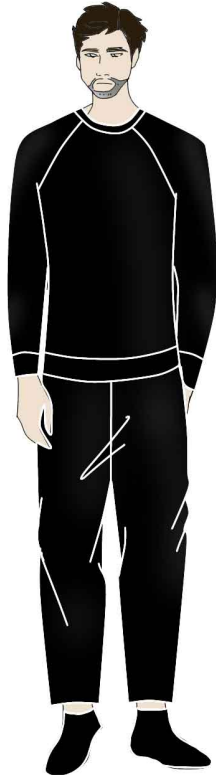
Base - Black neutrals

Layers - Knit blazer, Knit sweater

NELSON & BARNEY



NELSON
BASE



BARNEY
BASE



ANFISA



FERAPONT



IDENTIFIER

Anfisa - Apron and scarf
Fedotik/Rode - Knit zippered outer
Ferapont - Vest

GARMENT TYPES

Base - Black neutrals