

City Theatre presents  
Saratoga International Theater Institute's

# The Medilm

Based on the Life and Predictions of **Marshall McLuhan**  
Conceived and Directed by **Anne Bogart**



**CITY  
THEATRE**  
on the south side





**Elizabethan**

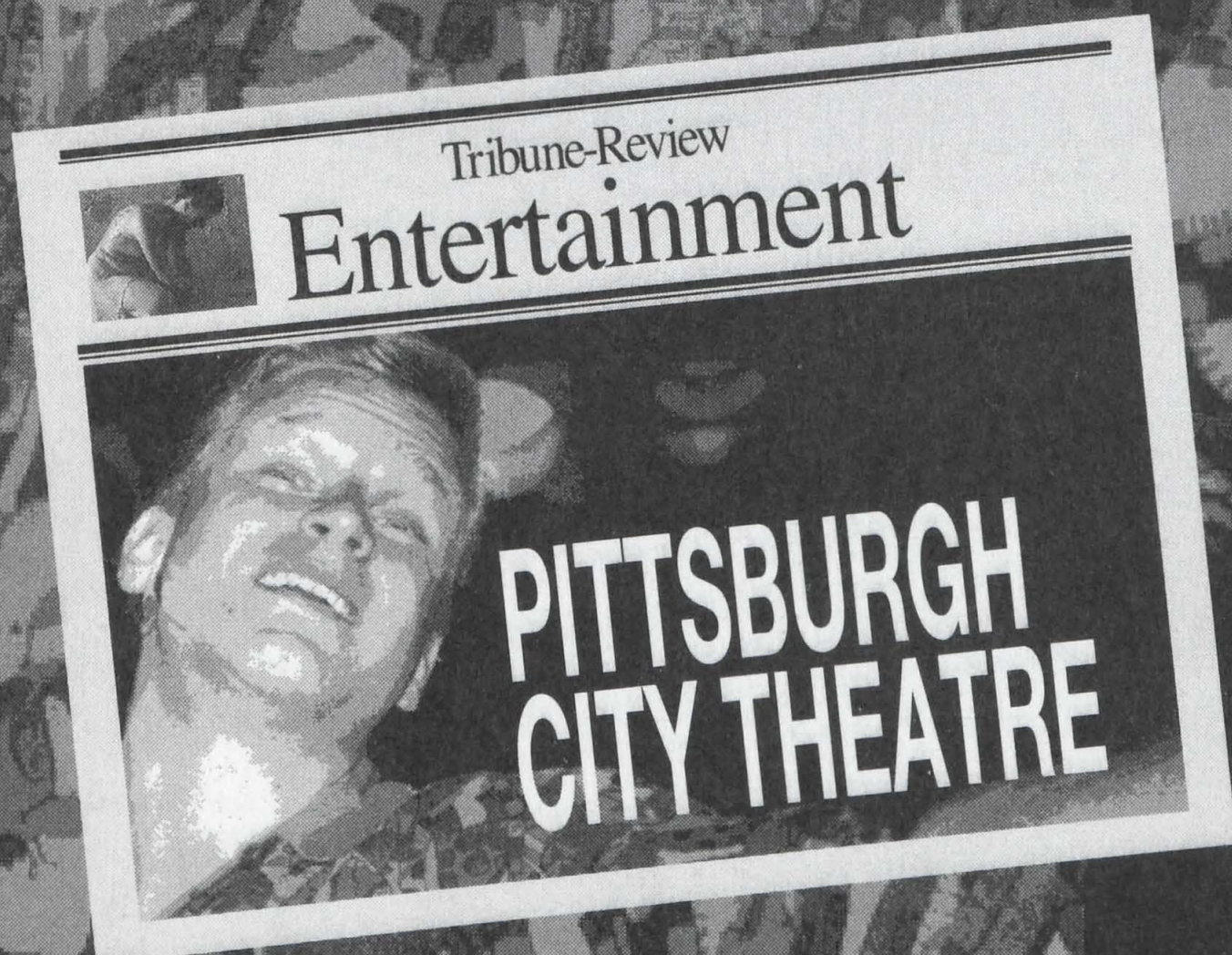
*Operetta  
Comedy*

**Farce**

**Musical**

**DRAMA**

**Tribune-Review**



From *Death of a Salesman* to *Nunsense*, the **Tribune-Review** brings you news, events and reviews to keep you up-to-date on theater in Pittsburgh.

In a world of choice, why not choose the only newspaper that has changed with the times — the **Tribune-Review**.

*Isn't it time you tried  
the TRIB?*

PITTSBURGH  
**Tribune-Review**

<http://tribune-review.com/trib/>

**For Home Delivery call 1-800-909-TRIB**





CITY THEATRE  
57 SOUTH 13th ST.  
PITTSBURGH, PA 15203

**PRODUCING DIRECTOR**  
Marc Masterson

**BOARD OF DIRECTORS**

**PRESIDENT**

Brian Ruder

**VICE PRESIDENT**

Mary Del Brady

**VICE PRESIDENT**

Susan Harris Smith

**TREASURER**

Karl Krieger

**SECRETARY**

Marcia Boddy Roque

Francine Abraham

Marsha Berger

Robert M. Bernardini

Robin Joan Bernstein

Andrew Blair

Carol R. Brown

Jeanne C. Caliguiri

Philip Chosky

Norbert Connors

Ann Davis

Suzanne L. DeWalt

Herbert Elish

Libby G. Fishman

William H. Genge

Ira H. Gordon

Edward H. Harrell

Susan G. Hillman

Thomas Hollander

Gerri Kay

Robin Kaye

Ellen Kelson

W. Gregg Kerr

Alex Matthews

Janet Markel

Janet Moritz

Brock T. Onque

Leonard P. Perfido

C. Prentiss Orr

Antonio D. Pyle  
Dee Jay Oshry  
Concetta Silvaggio  
Mae Smethurst  
Roberta Stackawitz  
Nancy D. Washington  
Sarah H. Wiggin  
Charles R. Zappala

**ADVISORY BOARD**

Jane Arkus  
Robert Frankel  
Alan London  
Audrey Reichblum  
Barbara Widdoes  
Florence Zeve

**CITY CORE OFFICERS**

**PRESIDENT**

Concetta Silvaggio

**VICE PRESIDENT**

Suzanne DeWalt

**VICE PRESIDENT**

Gene Kail

*CITY CORE, City Theatre's volunteer organization is always looking for new members. To find out how you can become involved, contact our Administrative Office at 431-4400 and sign up today!*

**ACCESS PROGRAM ADVISORS**

Maggie Stewart  
Robert C.T. Steele

**ACCESSIBILITY COORDINATOR**

Lora Oxenreiter

*City Theatre's Program reaches thousands of people in the Pittsburgh metropolitan area. For advertising rate information call 431-4400, x227.*

**EDITOR**

Paul Flaherty

**PUBLISHED**

October 1996

**COVER DESIGN**

Witalis Burke Associates, Inc.

**PRINTED BY**

Geyer Printing

**MISSION STATEMENT**

*City Theatre is a professional, not-for-profit performing arts organization. Its mission is to provide an artistic home for the development and production of contemporary plays of substance and ideas that engage and challenge diverse audiences.*

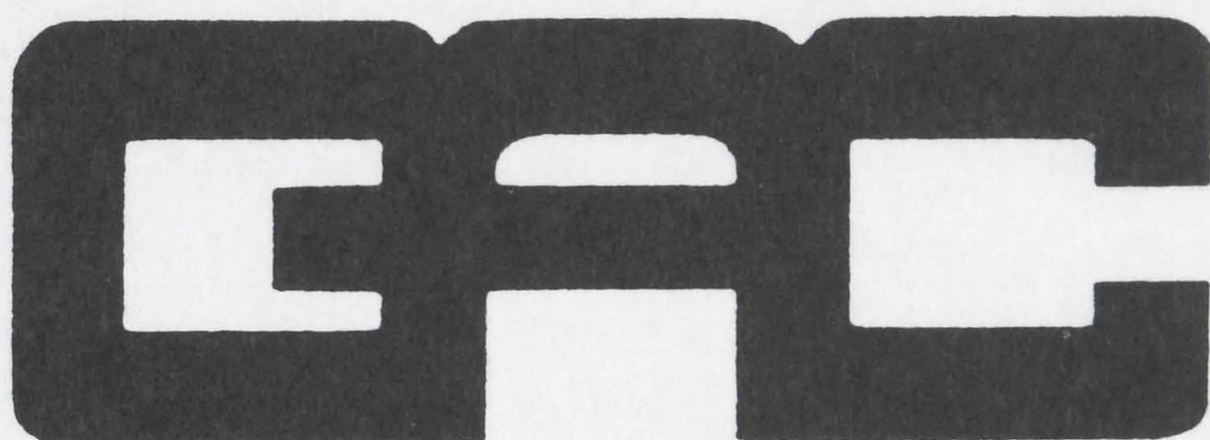


Administration: 412/431-4400 • Box Office: 412/ 431-CITY  
Fax: 412/431-5535 • E-Mail: marcm@andrew.cmu.edu



**SERVING FINANCIAL COMMUNITIES  
IN EASTERN USA FOR 62 YEARS**

**REAL ESTATE APPRAISALS  
TITLE SEARCHES & TITLE INSURANCE**



**GENERAL AMERICAN CORPORATION  
700 Fifth Avenue  
Pittsburgh, PA 15219**

**AND ITS OFFICES:**

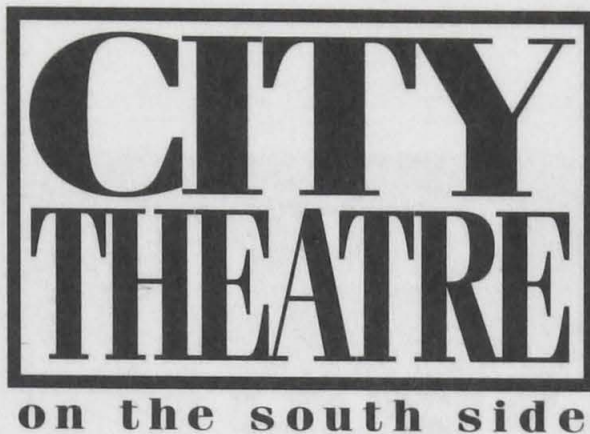
**IN**

**PENNSYLVANIA, NEW JERSEY, VIRGINIA,  
THE CAROLINAS AND FLORIDA**

**“RECOGNIZING CITY THEATRE’S  
CONTRIBUTION TO THE  
PERFORMING ARTS”**

**(412) 261-4731 • 800-242-1664 • FAX: (412) 261-1049**





**PRODUCING DIRECTOR**

Marc Masterson

**P R E S E N T S**

**THE MEDIUM**

Inspired by the life and predictions of Marshall McLuhan

Conceived and Directed by Anne Bogart

Created and performed by the

SARATOGA INTERNATIONAL THEATER

INSTITUTE (SITI) Company

**ENSEMBLE**

J. Ed Araiza\*

Will Bond\*

Ellen Lauren\*

Kelly Maurer\*

Stephen Webber\*

Director ..... Anne Bogart

Lighting Designer ..... Michitomo Shiohara

Assistant to Mr. Shiohara ... Andrew J. Kranis

Costume Designer ..... Gabriel Berry

Soundscape ..... Darron L. West

Set Design Associate ..... Anita Stewart

Dramaturg ..... Gregory Gunter

Production Manager ..... Andrew J. Kranis

Stage Manager ..... Megan Wanlass\*

Sound Engineer ..... Kurt Kellenberger

Managing Director .... Ruth Ann Nightengale

\*Member of Actors' Equity Association, the Union of Professional Actors and Stage Managers in the United States

**O c t o b e r 1 5 — N o v e m b e r 3**

City Theatre is a Constituent of Theatre Communications Group (TCG),  
the national organization for the American theatre,  
a member of Theatre Association of Pennsylvania,  
and a member of Citizens for the Arts in Pennsylvania.



# The **weiss**guys are coming...

You've long known the **weiss**family  
as your source for floor and window  
coverings. Now they're expanding to  
Shadyside with furniture, glassware,  
bedding, gifts, watches, lighting and,  
of course, **weiss**rugs.

All of this in the middle of **weiss**nut  
(formerly Walnut) Street.

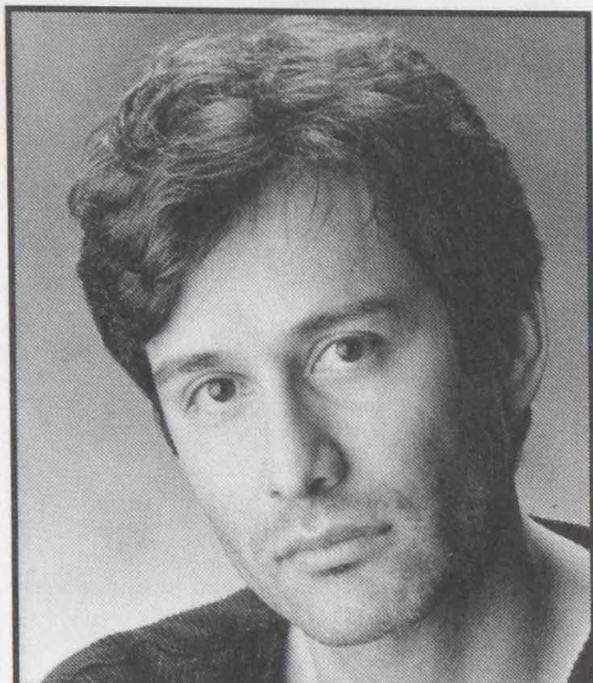
Before you know it, you'll be saying,  
"Have a **weiss**day!"

**weiss**house

DESIGNSTORE.FURNITURE.RUGS  
5511 WALNUT/412.687.1111  
CARPETS.RUGS.BLINDS  
2621 MURRAY/412.421.8828/800.422.7848

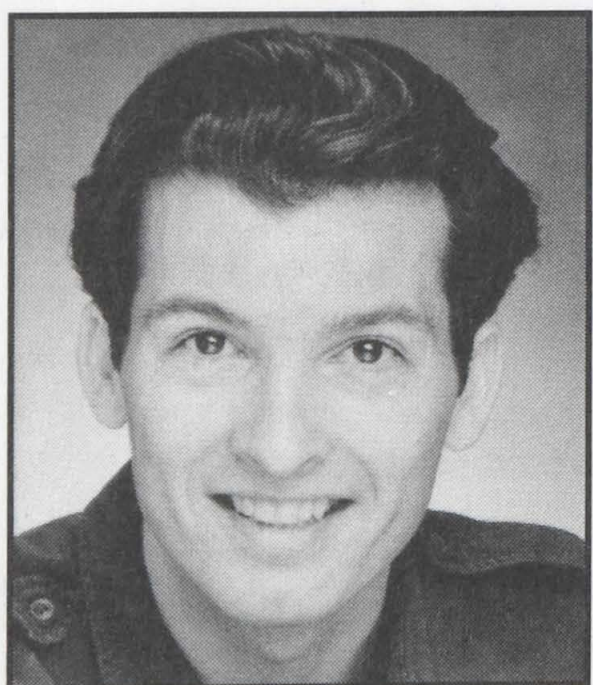


# THE CAST



## J. ED ARAIZA (ENSEMBLE)

SITI company member. NYC off-Broadway - *THE MEDIUM* at New York Theatre Workshop; *SMALL LIVES/BIG DREAMS* at P.S. 122; *ORESTES* at the Penn Yards and *OCCASIONAL GRACE* - both at En Garde Arts; *WORDS DIVINE* at Intar. Off-off-Broadway - Duo Theater, Theatre for the New City. Regional Theatre - Actors Theatre of Louisville: *PICNIC*, *KEELY AND DU* (original cast/1993 Humana Festival), 1969 (1994 Humana Festival), *THE MEDIUM* and *SMALL LIVES/BIG DREAMS* (Modern Masters Series); Hartford Stage: *KEELY AND DU*; Mixed Blood Theatre: *SANTOS AND SANTOS*; Alliance Theatre (1996 Olympic Arts Festival): *SMALL LIVES/BIG DREAMS*; Modus Ensemble: *ESPERANCE*; Arena Stage: *YERMA*; A Contemporary Theatre: *PRINCIPIA SCRIPTORIAE*; South Coast Rep: *CHARLEY BACON*; Los Angeles Theatre Center: *KING LEAR*, *TUMBLEWEED*, *MACBETH*, and *LA VICTIMA* Other Theatre - Toga International Arts Festival and two years with El Teatro de la Esperanza. Film: *THE RAID* directed by Jose Luis Valenzuela; *DISTANT WATERS* and *ILLEGAL* both award-winning films by Carlos Avila. TV: Various soaps and episodics.



## WILL BOND (ENSEMBLE)

As a founding member of SITI, Will has performed William in Charles Mee's *ORESTES* and has created roles for *THE MEDIUM* and *SMALL LIVES/BIG DREAMS* which have played in New York, Minnesota (Walker Arts Center), San Francisco, Actors Theatre of Louisville, Ireland, Japan, and most recently *SMALL LIVES/BIG DREAMS* at the 1996 Olympic Arts Festival in Atlanta. Will has been conducting classes for SITI in New York and in residences around the country over the last five years. He has toured in *DIONYSUS* with Tadashi Suzuki and the Suzuki Company (SCOT) and in Robert Wilson's *PERSEPHONE* for the Theatre Olympics in Greece. He was a company member at StageWest in Massachusetts for five years. Mr. Bond has an MFA from the University of Pittsburgh and is happy to be back with his friends at City Theater where he has performed in *NUTS*, *ON THE VERGE*, *HYPOCHONDRIAC*, and *THE BALTIMORE WALTZ*.

Actors' Equity Association was founded in 1913 to protect Actors from the severe mistreatment that permeated the industry at that time. Since its inception Equity has had only twelve Presidents. Its current President is Tony Award winner Ron Silver. The 39,000 member Association consists of distinguished stars and other professional Actors and Stage Managers who work nationwide, from New York's Broadway to Los Angeles, from Minneapolis to Miami Beach, in regional stock and dinner theatre, and in theatres for young audiences which build the audiences of tomorrow. These Actors and Stage Managers are committed to working in the theatre as a profession, not an avocation, and bring to you the finest professional training and experience. By presenting Equity productions, this theatre offers to you, our audience, the best entertainment presented by the finest quality Actors and Stage Managers that your admission dollars can buy.

Taking pictures or making recordings of any kind during the performance is strictly prohibited.



# NOW PREMIERING AT OPTIONS

**options**  
A NEW SLANT ON HOME FURNISHINGS

Family Room

Begins With Family

Wyatt Silverman teaches Dad Michael the elements of guitar.  
Futon Cover: *Desmond* by Sis. Frame: *Lotz Convertable Sleeper*  
exclusively by Options.

## America's Finest FUTONS

**412-481-7322** SOUTH SIDE • *Corner of E. Carson & 20th Streets*

**412-364-4991** NORTH HILLS • *7607 McKnight Road*

## FREE PERFORMANCES NIGHTLY

**NOW HELD  
OVER FOR  
A RECORD  
4 2 9  
CONSECUTIVE  
WEEKS**

## NEW ACTS WEEKLY

ACT I

•  
QUALITY

ACT II

•  
VALUE

ACT III

•  
SERVICE



# THE CAST



## **ELLEN LAUREN (ENSEMBLE)**

As a founding member of SITI, Ms. Lauren has performed Electra in *ORESTES*, Agave in *DIONYSUS*, *THE MEDIUM*, and *GOING, GOING, GONE*, as well as conducting classes for SITI in New York over the last five years. As a member of the Suzuki Company of Toga (SCOT) under the direction of Tadashi Suzuki, she has toured throughout the world; including performances at the Teatro Olimpico in Italy and the Theatre Olympics held in Greece. As a master teacher of the Suzuki Actor Training Method, she continues to teach both in the US as well as abroad for Mr. Suzuki, and is currently on the faculties of Juilliard, Columbia University, and Fordham University. Additional credits: Daisy, *THE ADDING MACHINE*, Madge, *PICNIC*-Actors Theatre of Louisville, *THE WOMEN*-Hartford Stage. Four years resident company-The Milwaukee Repertory Theater; two years resident company-Alley Theatre; six years resident company-StageWest in Massachusetts.

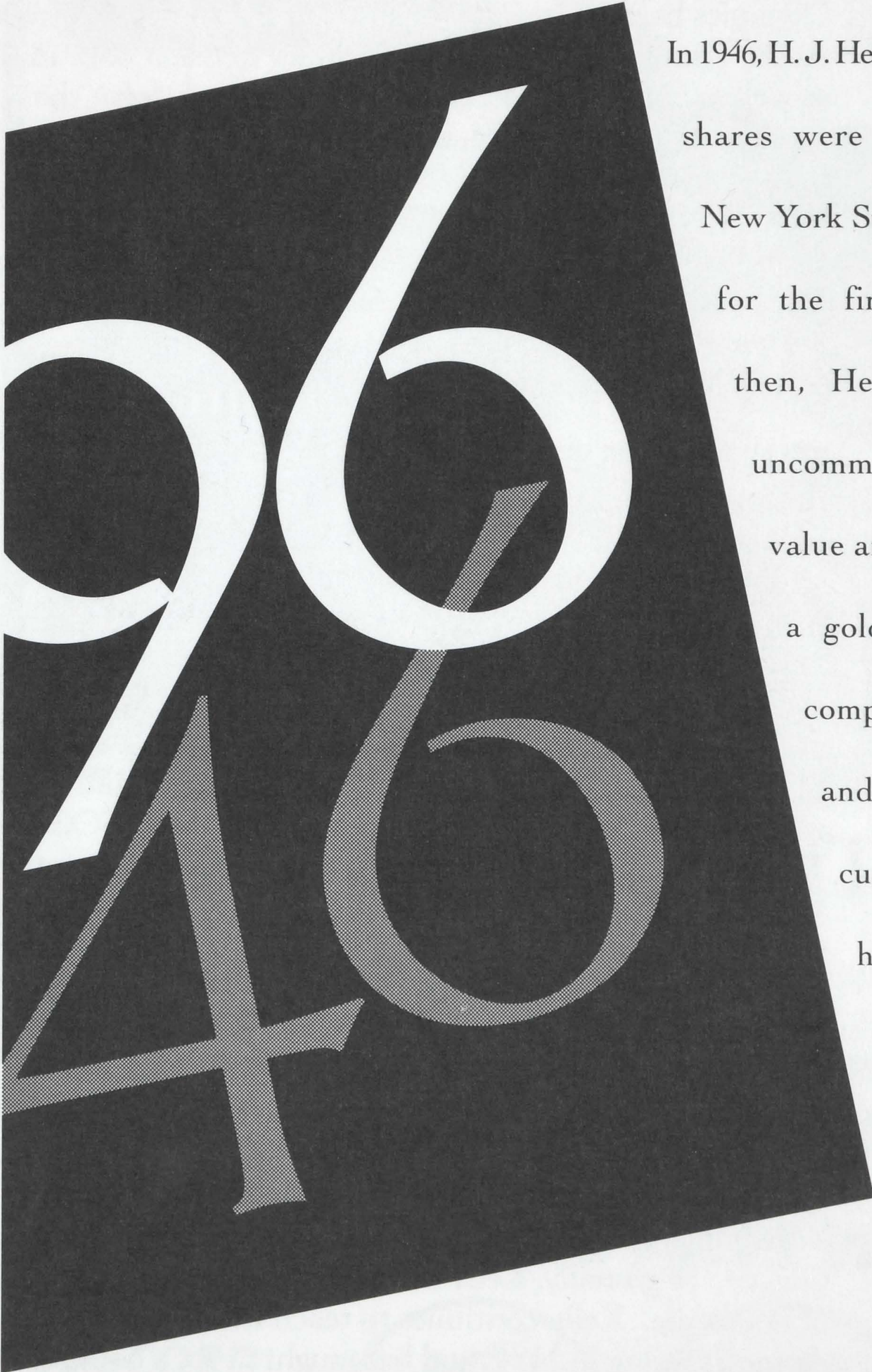


## **KELLY MAURER (ENSEMBLE)**

Kelly is a founding member of SITI. She has performed with the company in *ORESTES* and created roles for *THE MEDIUM* and *SMALL LIVES/BIG DREAMS*, both of which she performed at the Toga International Arts Festival in Japan, Saratoga Springs, New York. and at the New York Theatre Workshop and P.S. 122. Most recently, Kelly performed in the 1996 Olympic Arts Festival in Atlanta in SITI's *SMALL LIVES/BIG DREAMS*. Kelly has also performed with Tadashi Suzuki's Suzuki Company of Toga (SCOT) at the Toga International Arts Festival in Japan, Art Carnuntum, Vienna, and in the US at SITI. Regionally, Kelly was a company member at StageWest for five years where she portrayed, among others, the title role in *HAMLET* (also performed at the Toga International Arts Festival), and Hecuba in *THE TROJAN WOMAN*. At the Milwaukee Repertory Theater, Kelly originated the role of Rainbow in Maria Irene Fornes' *AND WHAT OF THE NIGHT*. Kelly recently performed in Robert Wilson's *PERSEPHONE* in New York and at the first annual Theatre Olympics in Delphi, Greece. Regionally, Kelly has also been seen at Actors Theatre of Louisville. Kelly continues to teach the Suzuki Method of Actor Training in NYC and has taught at such colleges as Fordham, Mt. Holyoke, Williams, Smith, and the University of Pittsburgh. Kelly is pleased to return to The City Theatre where she was a company member from 1984-87.



# 50 Years of Growth

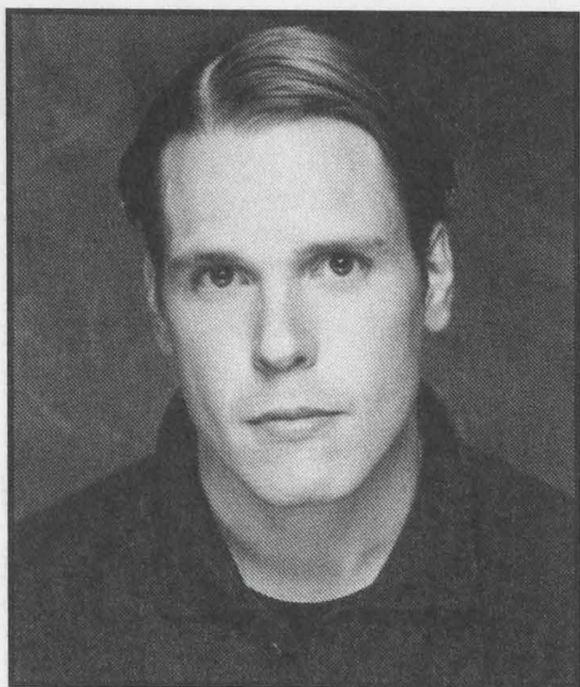


In 1946, H. J. Heinz Company  
shares were sold on the  
New York Stock Exchange  
for the first time. Since  
then, Heinz has set an  
uncommon standard of  
value and performance —  
a golden tribute to the  
company's loyal owners  
and its employees and  
customers worldwide who  
have made Heinz a great  
buy for generations.





# THE CAST



## **STEPHEN WEBBER (ENSEMBLE)**

Stephen is a SITI company member and has performed *THE MEDIUM* (Actors Theatre of Louisville Classics in Context Festival and in San Francisco at Theatre Artaud) and *GOING, GOING, GONE* (Actors Theatre of Louisville Humana Festival, Saratoga Springs, and the Toga International Arts Festival). Off-Broadway: *TROJAN WOMEN/A LOVE STORY* at En Garde Arts. Regional Theatre: *THE TEMPEST*, *HAMLET*, *A CHRISTMAS CAROL*, *HOLIDAY MEMORIES* at StageWest; *JUNO AND THE PAYCOCK*, *SHE STOOPS TO CONQUER*, *A CHRISTMAS CAROL* at Milwaukee Repertory Theater;

- *TWELFTH NIGHT*, *AS YOU LIKE IT*, *MACBETH*, *TRUE WEST* at Actors Shakespeare Company. He also performed *HAMLET* at the Toga International Arts Festival.
- 

---

## **ANNE BOGART (DIRECTOR)**

Co-Artistic Director of the Saratoga International Theater Institute (SITI), founded with Japanese director Tadashi Suzuki in 1992. She is a recipient of two Obie Awards, a Bessie Award and is an associate professor at Columbia University. Ms. Bogart has directed in theaters and universities throughout the United States and Europe. Recent Productions: *GOING, GOING, GONE* (SITI); *SMALL LIVES/ BIG DREAMS* (SITI); *THE MEDIUM* (SITI); *THE ADDING MACHINE* by Elmer Rice (Actors Theatre of Louisville); *HOT 'N THROBBING* by Paula Vogel (American Repertory Theater); *MARATHON DANCING* by Laura Harrington (En Garde Arts); *ESCAPE FROM PARADISE* by Regina Taylor (Circle Rep.); *THE WOMEN* by Clare Booth Luce (Hartford Stage), *PICNIC* by William Inge (Actors Theatre of Louisville), and *BALTIMORE WALTZ* by Paula Vogel (Circle Rep.).

## **GABRIEL BERRY (COSTUMES)**

Regional Theatre: *HENRY IV* at American Repertory Theatre; Eric Bogosian's *SUBURBIA* at Lincoln Center Theater; and Gloria Naylor's *BAILEY'S CAFE* at Hartford Stage Company. Off-Broadway: Anne Bogart's *MARATHON DANCING* at En Garde Arts; New York Theatre Workshop design associate for *UNFINISHED STORIES*, *OWNERS*, *TRAPS*, *LOVE AND ANGER* *THE INVESTIGATION OF THE MURDER IN EL SALVADOR*. Other Theatre: *HOW TO WALK AND ELEPHANT* with Bill T. Jones and Arnie Zane Dance Company; *L'ETOILE* with Opera Auid in the Netherlands; *YOSHIKO CHUMA'S 8* with Charleroi Dance in Belgium and a Molissa Fenley/Laurie Anderson/Kiki Smith collaboration for the Berlin Ballet.

## **MICHITOMO SHIOHARA (LIGHTING)**

Michitomo has designed lights for the American and international premieres of the American and international premiers of *THE MEDIUM* and *SMALL LIVES/BIG DREAMS*, internationally for several rock concerts and spent ten years as an actor and resident lighting designer with the Suzuki Company of Toga. Credits there include: *HOMAGE TO HOMOLUDENS*, *IVANOV*, *DIONYSUS*, *THE TALE OF LEAR*, and



# violinique...

## eyetique

Agency: Childs Communications

Christopher Wu, Violinist, Pittsburgh Symphony Orchestra;  
wearing sunglasses by Jean-Paul Gaultier. Hair and Make-up: Marshall's Hair Design.



**SQUIRREL HILL EYETIQUE**

2242 Murray Ave. • 422-5300

The world's finest collection of unique fashion eyewear.  
Complete vision and hearing center.

[www.eyetique.com](http://www.eyetique.com)



## WHO'S WHO

---

- WAITING FOR ROMEO. Toga International Arts Festival: resident designer working in
- collaboration with, among others, Garzdeniza, Lech Mackiewicz, Monica Vinao, Arden
- Fingerhut, and Anne Bogart.

### **DARRON L. WEST (SOUNDSCAPE)**

SITI Resident Sound Designer and company member and an artistic associate with New York Theatre Workshop. His collaborations with Anne Bogart include: *EYE OF THE HURRICANE*, *PICNIC*, and *THE ADDING MACHINE* (Actors Theatre of Louisville), and *ESCAPE FROM PARADISE* (Circle Rep). With SITI (New York, Ireland, Japan, and elsewhere): *THE MEDIUM*, *GOING, GOING, GONE*, and *SMALL LIVES/BIG DREAMS*. Other credits include Lawrence Fishburne's Riff Raff at Circle Repertory, The Acting Company's National Tour of *HENRY V*, *BOY* at La Jolla Playhouse, and the Obie, Pulitzer, (and later Tony) Award winning rock musical *RENT* at New York Theatre Workshop. He is a recipient of a New York Theatre Wing Nomination for Sound Design and a two consecutive year nominee for Philadelphia's Barrymore Award for Sound Design.

### **GREGORY GUNTER (DRAMATURG)**

Gregory dramaturged both *THE MEDIUM* and *SMALL LIVES/BIG DREAMS* for SITI. Regional Theatre: For Anne Bogart, he has worked as imagist on *THE WOMEN* at Hartford Stage Company; *HOT 'N THROBBING* at American Repertory Theatre and *ORESTES* at the Saratoga International Theater Institute. He is now Literary Manager for the La Jolla Playhouse.

### **ANDREW J. KRANIS (PRODUCTION MANAGER)**

Andrew has worked with SITI several times in the past, as Assistant Director and Japanese-English Interpreter, and stage managed SITI's West Coast premiere of *THE MEDIUM* at Theatre Artaud in San Francisco. As a director, he has worked at New York Theatre Workshop, NYU, and Dixon Place.

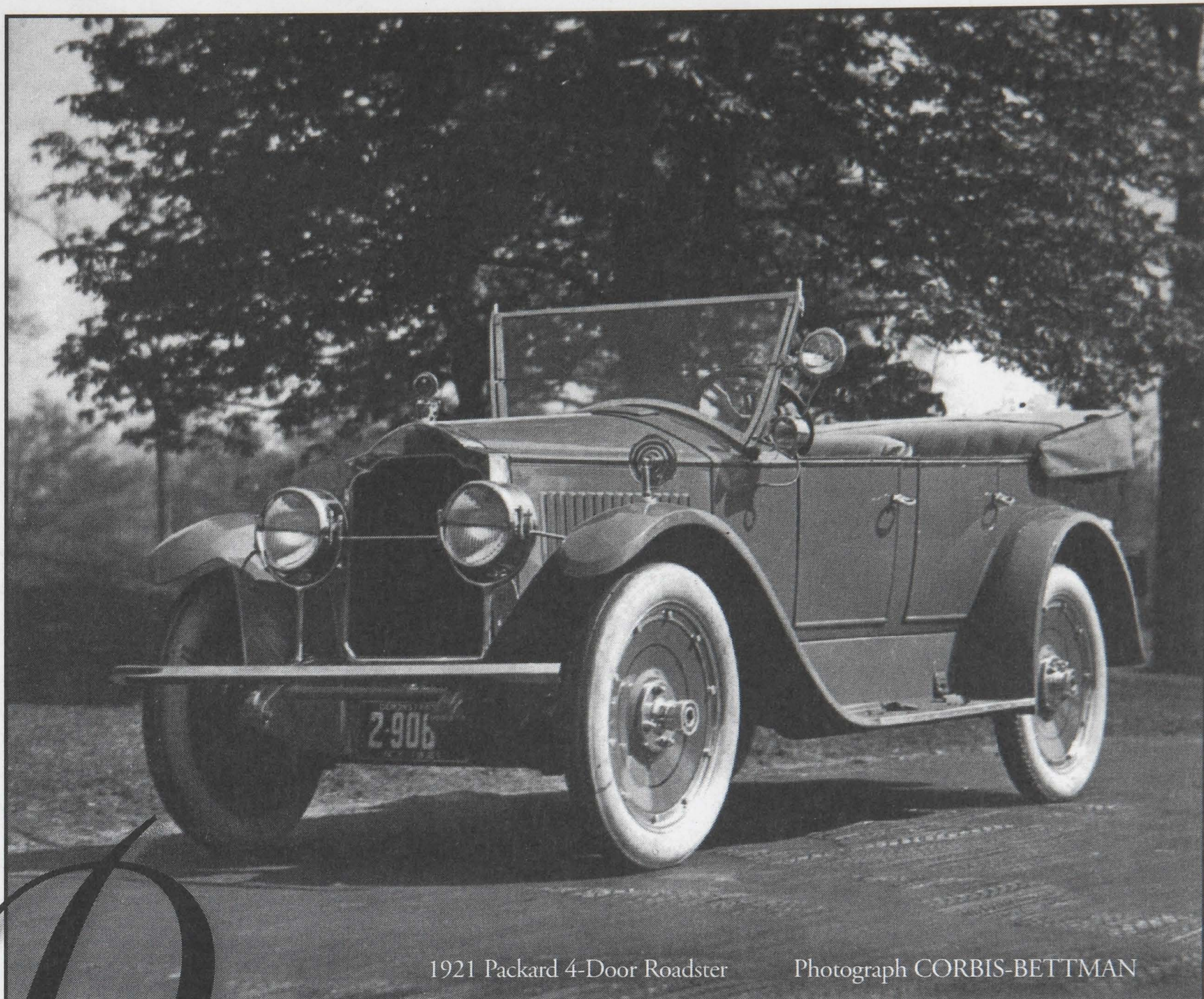
### **MEGAN WANLASS (STAGE MANAGER)**

Megan is a SITI company member and stage manages all of the company's repertoire including *THE MEDIUM* (Southern Theater, Utah State University), *SMALL LIVES/BIG DREAMS* (1996 Olympic Arts Festival/Atlanta) and *GOING, GOING, GONE* (Actors Theatre of Louisville, Bernhard Theatre and the 1996 Toga International Arts Festival). Megan began working with Anne Bogart during *THE ADDING MACHINE* at Actors Theatre of Louisville where she served as a stage management intern for their 1994-95 season.

The SARATOGA INTERNATIONAL THEATER INSTITUTE (SITI) is an ensemble-based company whose three ongoing components are the creation of new work, the training of young theatre artists, and a commitment to forming partnerships with international collaborators. The SITI company is comprised of J. Ed Araiza, Will Bond, Leon Ingulsrud, Ellen Lauren, Kelly Maurer, Jefferson Mays, Tom Nelis, Barney O'Hanlon, Karenjune Sanchez, Megan Wanlass, Stephen Webber, and Darron L. West.

SITI was founded in 1992 by Anne Bogart and Tadashi Suzuki to redefine and revitalize contemporary theater in the United States through an emphasis on international cultural exchange and collaboration. Originally envisioned as a summer institute in Saratoga





1921 Packard 4-Door Roadster

Photograph CORBIS-BETTMAN

*During the 1920s, Packard motor-cars were assembled in what is now called the Geyer Building. In its heyday, the Packard was considered a fine motor-car — well-engineered and well-built. In the early 1930s, Packard Motor Company consolidated its assembly operations in Ohio.*

*Today, the Geyer Building is home to a state-of-the-art pre-press, printing and binding plant. Geyer Printing is recognized as a leading producer of high-quality printed materials because our skilled craftsmen and conscientious representatives pride themselves on placing the needs of our customers first.*



**GEYER PRINTING COMPANY, INC.**

*A Pittsburgh Company, Locally Owned for Nearly 90 years*

3700 BIGELOW BOULEVARD, PITTSBURGH, PA 15213

412-682-3633 FAX 412-682-4856



# PROGRAM NOTES

Springs, New York, SITI has expanded to encompass a year-round program based in New York City with a summer season in Saratoga. SITI believes that contemporary American theatre must necessarily incorporate artists from around the world and learn from the resulting cross-cultural exchange of dance, music, art, and performance experiences. *THE MEDIUM* was voted best visiting production at the 1995 Irish Life Dublin Theatre Festival. SITI's *SMALL LIVES/BIG DREAMS* was featured in this summer's Olympic Arts Festival in Atlanta. For more information on SITI performances, Viewpoint training, Suzuki training, the summer institute at Skidmore College in Saratoga Springs, or the recently published book *Anne Bogart: Viewpoints*, contact the SITI office (212) 873-2155 or write to SITI at 236 West 78th Street, New York, NY 10024, USA. E-mail: SITIco@aol.com

The New York City premiere of *THE MEDIUM* was presented by New York Theatre Workshop.

The development of *THE MEDIUM* was made possible in part by the generous support of Arts International, the AT&T Foundation, and the Japan-U.S. Friendship Commission. SITI also receives funding from the National Endowment for the Arts and the New York State Council on the Arts.

## DIRECTOR'S NOTE

I began thinking about the nature of theater and how it will survive in a world where the very nature of entertainment is constantly being redefined. Long a fan of media philosopher Marshall McLuhan, I decided to use his insights to create a theater piece about who we are becoming vis-a-vis the radical developments in technology that surround us. McLuhan spent his entire life exploring and criticizing our methods of communication. Towards the end of his life, he suffered a series of strokes and, with cruel irony, lost his own ability to communicate through speech.

## CITY THEATRE STAFF

### **MARC MASTERSON (Producing Director)**

Directing credits: **City Theatre:** *If We Are Women*, *Fires in the Mirror*, *Lips Together-Teeth Apart*, *Oleanna*, *The Man Who Lived Underground*, *Evelyn and the Polka King*, *Our Country's Good*, *Act Without Words I & II*, *Le Bourgeois Avant-Garde*, *T-Bone 'N' Weasel*, *True West*, *The House of Blue Leaves*, *Frankie & Johnny in the Clair de Lune*, *The Red Keds*, *Greater Tuna*, *The Instant City Circus*, *Danger: Memory*, *The Foreigner*, *On the Verge*, *Painting Churches*, *Freedom Days*, *The Hypochondriac*, *Crimes of the Heart*, *Whistle Pigs and Whoopsnakes*, *Fool for Love*, *Children of a Lesser God*, *Fool's Company*, *Sesame Street Fire Safety Show*, *American Dreams Lost & Found*, *Working*, *Indians*, *Wings*. **Pittsburgh Theater:** *What Tuesdays Are Like* (CMU Showcase); *Romeo and Juliet*, *Othello*, *Merry Wives of Windsor* (Three Rivers Shakespeare Festival); *Holy Ghostly*, *Killer's Head*, *Cowboys #2* (Carnegie Mellon); *The Bald Soprano*, *Don't Walk Around Stark Naked* (Theatre Express). **Off Broadway:** *Lunchtime at Dover AFB*, *The Box* (St. Clements); *Passing Time* (The Production Company).



# TITUS & McCONOMY

ATTORNEYS AT LAW

LITIGATION

CORPORATE

INTELLECTUAL PROPERTY

HEALTH CARE

ENVIRONMENTAL

ESTATE PLANNING

TITUS & McCONOMY LLP

FOUR GATEWAY CENTER

PITTSBURGH, PA 15222

TELEPHONE 412/642-2000

VOICE MAIL 412/642-2004

FACSIMILE 412/642-2950



• **RICHARD KEITEL (ASSOCIATE ARTISTIC DIRECTOR)**

• Currently the Head of the Undergraduate Directing and Acting program at  
• the University of Pittsburgh. Directing Credits, City Theatre: *American*  
• *Buffalo*, *Dr. Seuss*. University of Pittsburgh: *School for Scandal*, *Jeffrey*, *Six*  
• *Degrees of Separation*, *Mad Forest*, *After the Fall*, *A Moon for the Misbegotten*,  
• *Sexual Perversity in Chicago*, *Indian Wants the Bronx*. Other Places ; *Dining*  
• *Room* (Ensemble Theatre Company, PA), *Kennedy's Children* (Potpourri  
• Players, NYC), *Heidi Chronicles*, *Pygmalion* (RMWC, VA). Acting Credits,  
• *Reservoir Dogs* (Axiom Theatre), *Hecuba* (Unseamed Shakespeare Co.),  
• *Pizza Again* (Pyramid productions-New Works), *Miracle Church* (Kuntu  
• Rep), *Unidentified Human Remains...*, *Heidi Chronicles*, *True West*, *Danny*  
• *and the Deep Blue Sea*, *In the Boom Boom Room*, *Look Back in Anger* (  
• University of Pittsburgh)

• **RONI OSTFIELD (Artistic Director of Outreach)**

• Registered drama therapist. City Theatre Outreach: *Ashes*, *Dog Dreams*,  
• *Chains*, *We Are More Than This*, *Muffins*, *Who Turned Off the Lights?*, *AIDS:*  
• *The Next Generation*, *God Made Us Boss*, *A Human Face*, *A Whole New Ball*  
• *Game*, *Look at Us Now*. Pittsburgh Theater: *Pittsburgh Playback*, an interac-  
• tive improvisational theatre troupe - Founder and Director. Directing: Soho  
• Repertory Company, Pittsburgh Lab Theatre, Pittsburgh Playhouse, and the  
• University of Pittsburgh. Teaching: University of Pittsburgh, Pittsburgh  
• Playhouse, Playback and drama therapy workshops nation-wide.

• **TONY FERRIERI (TECHNICAL DIRECTOR—CITY THEATRE)**

• Resident Scenery and Properties Designer—City Theatre  
• Member of United Scenic Artists, USA Local #829.

• *Schoolhouse Rock Live!* (Gargaro Productions/City Theatre), *Polygraph*  
• (Quantum Theatre), City Theatre: *Beast on the Moon*, *If We Are Women*,  
• *Paul Robeson*, *Spunk*, *All In The Timing*, *Loot*, *From the Mississippi Delta*, *The*  
• *Caretaker – Lips Together*, *Teeth Apart*, *Oleanna*, *The Man Who Lived Under-*  
• *ground*, *The Baltimore Waltz*, *Crimes of the Heart*, *Our Country's Good*, *On*  
• *the Verge*. Pittsburgh Theatre: *Ruthless*, *Blues in the Night*, *Sleuth*, *Song and*  
• *Dance*, *One Flew Over the Cuckoo's Nest*, *Day in Hollywood – A Night in the*  
• *Ukraine* (Theatre at Hartwood), *La Traviata*, *La Boheme*, *Faust* (Pittsburgh  
• Opera Inc.), *Isn't It Romantic*, *Antigone* (Chatham College), *Steadfast*  
• *Soldier* (Physical Theatre Project), *Werther*, *Rodelinda* (Pittsburgh Opera  
• Centers at Duquesne) Regional: *All in the Timing* (Northlight Theatre-  
• Chicago), Pittsburgh Childrens Festival '86-'94 (PCF-PAFC), Pittsburgh  
• Renaissance Festival '94 (Butler County). Film (Commercial): Mt. Lebanon  
• Public Library (Development Dimensions International), First Federal Bank  
• of Rochester (Jim Humphreys & Associates).

• Also:

• Patti Kelly, Production Coordinator; Venise St. Pierre, Wardrobe; John  
• Henning, Run Crew.



*NOT*  
YOUR  
EVERYDAY  
NEWSPAPER



[www.inpgh.com](http://www.inpgh.com)



---

## Anne Bogart

by Kellee Van Aken

Anne Bogart is one of the premier artists of the American theater. Actors Theater of Louisville recently named her a modern master of her craft and devoted an entire festival program to her. Actors and playwrights vie to work with her. She is the kind of artist who inspires extreme reactions.

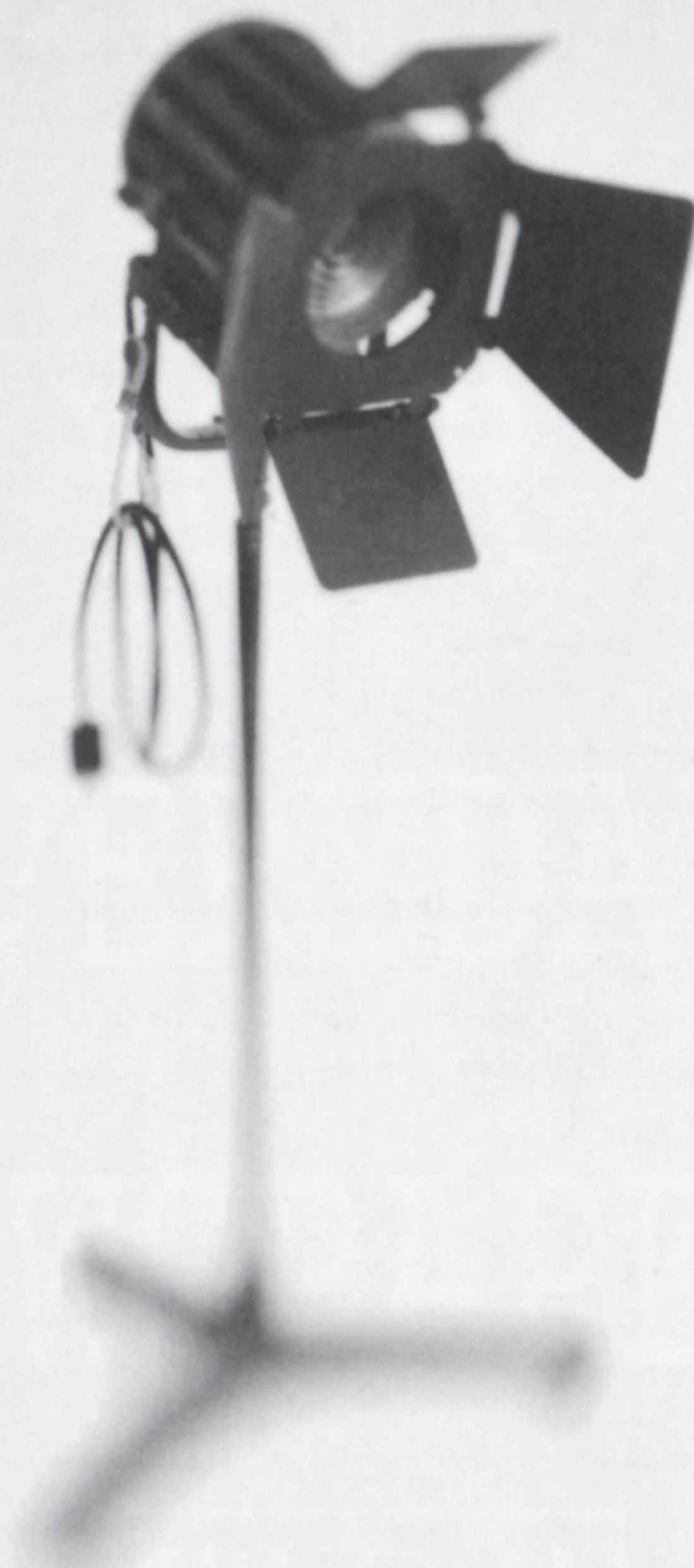
Bogart is the recipient of two Obie Awards, a Bessie Award, and a teacher at Columbia University. A director and co-founder of The Saratoga International Theater Institute (SITI) with Japanese director Tadashi Suzuki, Bogart has developed her own training method based on a combination of the Suzuki technique and her Viewpoints. Both Bogart and Suzuki focus their work around the body of the actor, setting aside the psychological realism of the Stanislavski technique that most actors are trained in, to achieve a supreme theatricality through movement. They believe that the emotional truth of a moment will disclose itself through rigorous formal work with the body. Rather than the words determining the form or structure of the play, it is the movement of the actors that literally shape the play.

Suzuki, whose method is taught at several universities in the States, bases his training on what he calls "a grammar of the feet." For Suzuki an actor's primary connection is with the ground. In search of this grounding, Suzuki has developed a series of stomping exercises that teach actors a rigorous body control.

### Background on *The Medium*:

The play is composed of a series of scenes that address the ideas and work of Marshal McLuhan. The characters include Marshall McLuhan, people in his memory, people who are dead. The play takes place during the moment of McLuhan's stroke. The movement of all the characters reflects his stroke. Beginning with, "Intro McLuhan," we learn some of the basic tenets of McLuhan's thought: technology is an extension of the senses of man, the necessity of man to engage with technology because change is inevitable and continuous. The better our grasp on change and technology, the easier it will be to control them. The idea is that man began as a oral creature in an aural (listening) culture whose world was changed irrevocably by print into a visual culture. Bogart expands and explores these and additional McLuhan themes. Using pop culture references, for instance, "Dionne Warwick" uses a Dionne Warwick song to illustrate one of McLuhan's points. Bogart imitates McLuhan's own approach to culture, adapting the popular to illustrate an idea.





Thanks For Supporting The Arts.  
(And You Thought You Were Just Watching  
Some First-Rate Theatre)



**Mellon**

© 1995 Mellon Bank Corporation



---

## 9 Viewpoints

Bogart's training centers around 9 Viewpoints, which serve as the backbone of her work. "The Viewpoints are a philosophy of movement translated into a technique for 1) training performers and 2) creating movement onstage."

### Viewpoints of Time

1. Tempo-speed of movement, fast or slow.
2. Duration-how long does a movement continue.
3. Kinesthetic response-A spontaneous reaction to a motion which occurs outside you ie, someone stamps the floor and you jump.
4. Repetition can be internal, repeating a movement within your own body, or external, repeating a movement, gesture, shape of something outside your own body.

### Viewpoints of Space

5. Shape-contour or outline the body (or bodies) makes in space: lines, curves, movement, stationary.
6. Gesture-A movement involving a part or parts of the body.
7. Architecture-the physical environment in which you are working and how your awareness of it effects your movement.
8. Spatial Relationship-the distance between things onstage, especially one body to another.
9. Topography-the landscape or floor pattern, or the design created through movement in space.

(from Tina Landau's "Source-Work, the Viewpoints and Composition: What are They?" in Anne Bogart: Viewpoints)

Look carefully for these techniques in action as you watch *The Medium*. The company of actors have all been trained in the Viewpoints and they helped create this play through rehearsal improvisation.



# OUR THANKS

to the following businesses,  
foundations, government agencies  
and individuals who generously  
support City Theatre.

## Business Backers

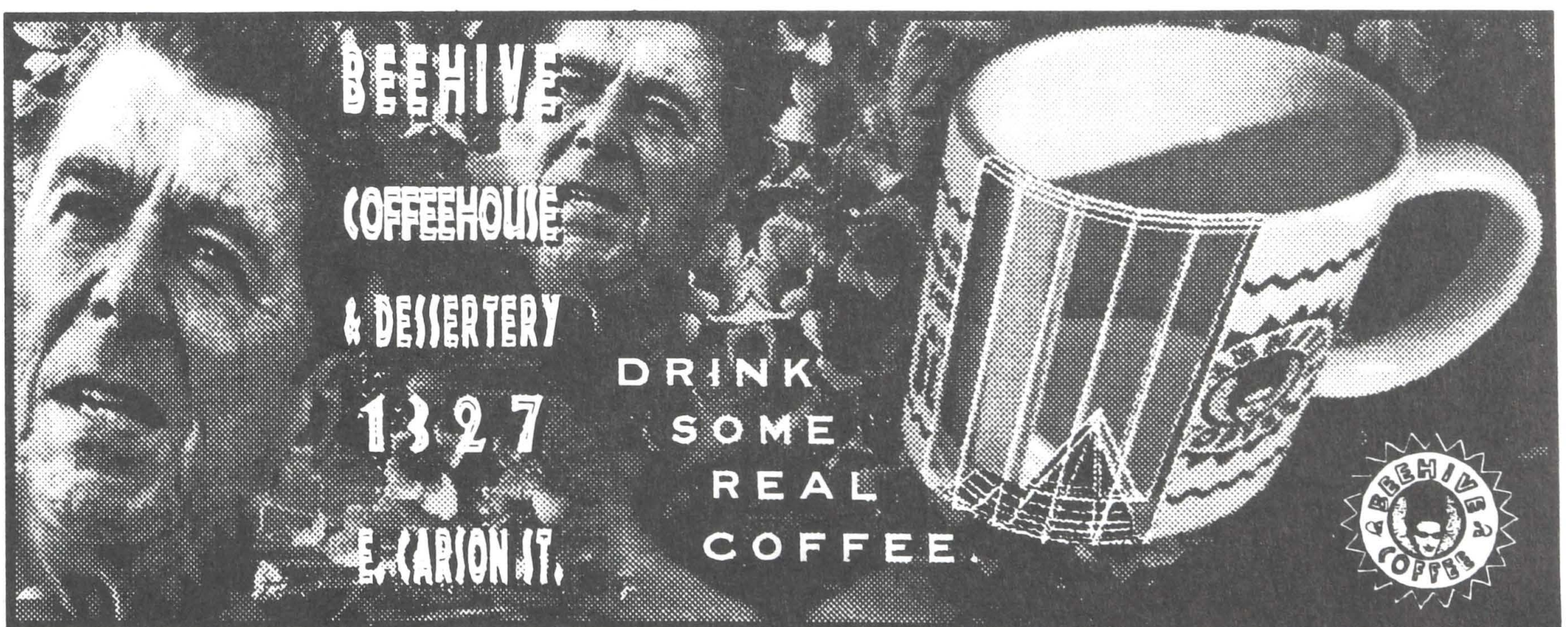
### They make a difference

*Consider joining their ranks:*

*Your company can be listed among these generous businesses who support City Theatre's community-oriented mission. We will promote your company to our diverse audience and include your business on our Business Backer Board displayed in the lobby. Other benefits can include free tickets, use of our facility, and curtain speech recognition of your sponsorship.*



*Your partnership enables us to address critical issues through lively entertainment. Help us create a dynamic atmosphere that's good for the community and your business with a Business Backer gift to City Theatre this year.*

*To learn more about making a contribution, please call 431-4400, x226.*



BEEHIVE  
COFFEEHOUSE  
& DESSERTERY  
1327  
E. CARSON ST.

DRINK  
SOME  
REAL  
COFFEE.



## ELBOW ROOM

Introducing a new lighter & healthier menu

5744 1/2 Ellsworth Avenue Shadyside 441-5222 Open 7 days a week, 11-2 a.m.



## FOUNDATIONS

Alcoa Foundation  
DeWinter/Ziegler Fund of the Pittsburgh History  
& Landmarks Foundation  
Eden Hall Foundation  
Marjorie S. Eiseman Memorial Fund of  
The Pittsburgh Foundation  
Audrey Hillman Fisher Foundation  
Matthew Hillman Fisher Foundation  
Elizabeth Louise Glasgow Foundation  
The Grable Foundation  
Green Family Foundation  
Harris Family Fund of the NY Community Trust  
The Hearst Foundation, Inc.  
Edward N. and Jane Haskell Philanthropic Fund  
Howard Heinz Endowment  
Vira I. Heinz Endowment

The Richard King Mellon Foundation  
Howard and Nell E. Miller Foundation  
The Pittsburgh Foundation  
The Pittsburgh Foundation - Howard Heinz Endowment Multi-  
Cultural Arts Initiative  
The Charity Randall Foundation, In Memory of Charity Randall  
Donald & Sylvia Robinson Family Foundation  
PNC Charitable Trust  
The Shubert Foundation

## GOVERNMENT AGENCIES

Allegheny Regional Asset District  
National Endowment for the Arts  
Pennsylvania Council on the Arts  
City of Pittsburgh

## CITY THEATRE BUSINESS BACKERS

### LEVEL 1

M. Berger Industrial Real Estate  
H. J. Heinz Company Foundation  
Mellon Bank Corporation  
PNC Bank  
SmithKline Beecham Consumer Healthcare  
Westinghouse Electric Corporation

### LEVEL 2

Bayer Corporation  
Blue Cross of Western PA  
Duquesne Light  
Equitable Resources  
Giant Eagle  
PPG Industries  
USAir  
USX Corporation

### LEVEL 3

General American Corporation  
Hilb, Rogal & Hamilton  
Pittsburgh Tribune-Review  
Reed Smith Shaw & McClay

### LEVEL 4

Armco, Inc.  
Bell Atlantic  
Cafe Allegro  
Copperweld  
Evans Ivory Moses Hollander & McVay  
Eyetique  
Geyer Printing  
La Fond Galleries  
Mallorca  
One Station Square  
Options  
Oxford Development Company  
Perfido Weiskopf Architects  
Titus & McConomy  
Weissrugs/Weisshouse

### LEVEL 5

Allied Security, Inc.  
Alpern Rosenthal & Co.  
Antonini Ristorante  
Arthur Andersen LLP  
Buchanon Ingersoll  
Carlson Real Estate Services  
Cindy Esser's Floral Shop  
Concept Art Gallery  
Eat'N Park Restaurants  
The Elbow Room  
EMC Management Services  
Ernst & Young LLP  
Hunan Gourmet  
LePommier  
Lhormer Real Estate  
Macondo  
Metaltech Inc.  
Minuteman Press  
Parker/Hunter  
Pittsburgh Post-Gazette  
Sherrard, German & Kelly, P.C.  
Tube City, Inc.  
Tucker Arensberg, PC

### LEVEL 6

17th Street Cafe  
1889 Cafe  
AEG Transportation  
City Books  
Computerpeople  
John B. Conomos, Inc.  
Dickerson Investments Company  
The E House Company  
Fagen's Inc.  
Gruntal & Co.  
IBM  
KCS Computer Services  
Sargent Electric Company  
South Bank Galleries  
Sterling Lebanon Packaging Corp.  
Tedco Construction Corp.



ristorante  
**ANTONINI**

*Italian Coastal Cuisine*

*A true taste of Italy*

Unique, classic Italian cooking served family style.  
Enjoy an afternoon or evening of exquisite dining in a  
relaxed atmosphere.

381-9901

27<sup>th</sup> at jane

on the southside

mon. thru fri. lunch & dinner

sat. and sun. dinner from 5 p.m.

full bar

free parking

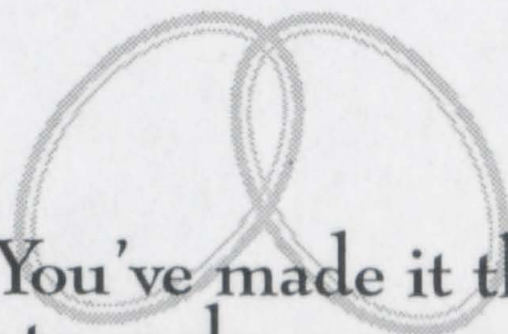
free shuttle service

catering and banquet facilities

reservations recommended

business lunches

Go ahead,  
take a vow.



You've earned it. You've made it through good times  
and bad. You're ready to make a commitment to each other  
as life partners. Let us help you make it a reality.



Birmingham  
Gallery

▼ Landmark Hall Rental

▼ Full-service Catering

20 South 14th Street (412) 481-6680



# WINGS

## PRODUCERS DIRECTORS DESIGNERS

\*1,000 and up  
\*500 to \*999  
\*250 to \*499

## PLAYWRIGHTS \*100 to \*249 ACTORS \*35 to \*99

List reflects contributions received on or before October 1, 1996.

### CITY THEATRE INDIVIDUAL CONTRIBUTORS 1995-96

#### City Theatre's Rising Stars

City Theatre is especially grateful to those contributors marked with a (\*) which indicates their participation in our *Rising Star Campaign*. These generous individuals have recently increased their contributions to join the PRODUCERS, DIRECTORS, or DESIGNERS levels of support. Our thanks to these *Rising Stars* for recognizing that exciting opportunities wait on City Theatre's horizon.

#### PRODUCERS

Anonymous  
Marsha Berger●★  
Robin Joan Bernstein●★  
and Herbert Seigle  
Philip Chosky●★  
Ann and Martin Davis●★  
Connie and Jamie Egan★  
Eloise and Herbert Elish●★  
Libby and Alan Fishman●★  
Rebeca and Robert Frankel★  
Marian and William Genge●★  
Nanette and Ira Gordon●★  
Marilyn and Warren Hollinshead★  
Gerri Kay●★  
W. Gregg Kerr●★  
Janet and Karl Krieger●★  
Elaine and Alan London★  
Janet and Donald Moritz●★  
Ruth and Leonard Perfido●★  
Antonio and Teri Pyle●★  
Catherine Raphael  
Richard E. Rauh  
Ginny and Brian Ruder●★  
Susan Harris Smith●★  
Nancy and Milton Washington●★  
Pamela and Charles Zappala●★  
Florence and Harvey Zeve★

#### DIRECTORS

Francine and Jim Abraham●★  
Russell and Katherine Ayers  
Carol and Andrew Blair●★  
Stephanie and Michael Bozic★  
Mr. and Mrs. William Block, Sr.  
Carol R. Brown●★  
Mr. and Mrs. Joseph C. Glasgow, Jr.  
Mrs. Virginia Greenwald  
Edward H. Harrell●★  
Mr. and Mrs. Henry L. Hillman  
Tom Hollander●★  
Ellen and Rick Kelson●★  
Dr. and Mrs. Brad Levinson★  
Walter Limbach and Sally Minard  
Ken and Pam McCrory  
Jim and Susan Morris★  
Dee Jay Oshry●★  
Audrey and Chuck Reichblum  
Mae and Richard Smethurst●★  
Janet and Chuck Vukotich★  
Bob and Arlene Weiner  
Sarah Hayes Wiggin●★

#### DESIGNERS

Barbara G. and Marcus Aaron, II

Jane and Leon Arkus  
Joan and Les Becker  
Patricia G. and Sanford S. Berman★  
Robert and Judy Bernardini●★  
Nancy Bernstein and Robert Schoen  
Mary Del Brady●★  
Susan and David Brownlee  
Carole and Norbert Connors●★  
Peggy and David Engel★  
Mr. and Mrs. Timothy Fisher★  
Dorothy and Joseph Genstein  
Mrs. Jane Haskell  
Barbara and Joe Hudson  
Sally and Robin Kaye●★  
Gloria and Bernard Kleiman  
Jim and Jan Lavine★  
Arleen<sup>†</sup> and Barry Lhormer  
Hannah and Jack Matthews  
Sarah Nichols★  
Betty and Richard Nimtz★  
O/P/U/S Inc. Ann Connelly★  
Lulu and C. Prentiss Orr●★  
Rita F. Perlow★  
Margaret and Edward Rieck★  
Lori Cardille-Rogal and Jim Rogal★  
Victor and Marcia Boddy Roque●★  
Mr. Robert M. Rosecrans  
Concetta Silvaggio and Richard Rush●★  
Cecile and Eric Springer★  
Hannah and Marvin Wedeen★  
Edris and David Weis★  
Arlene Carbone-Wiley and Clayton Wiley★

#### PLAYWRIGHTS

Anonymous  
Linda and Ed Abes  
Debra and Edward Abell  
Emily J. Andelman  
Laura and George Arnold  
Associated Actuaries  
Charlotte B. Avery  
Charity Imbrie and Jane Barnes  
Joyce W. Basilone  
Dan and Carol Berger  
Mr. and Mrs. Lester Berkowitz  
Carole and Barry Berman  
Mimi and Jules Bernard  
Georgia Berner  
Lois and Sam Blaufeld  
Judith and Richard Brand  
Louis Brody  
William R. Cadwell  
Dr. and Mrs. Paul S. Caplan

Randy and Patricia Cellone  
Yvonne and Dennis Chipman  
Mr. and Mrs. Kenneth V. Clarke  
Sally and Richard Cohen  
Eliese and John Cutler  
Ronald and Judith Davenport  
Mr. and Mrs. John DeWalt  
Suzanne L. DeWalt●  
Herbert and Carol Diamond  
Dr. Paul S. Dickman  
Deborah D. Dodds  
Gretchen G. Donaldson  
Dr. and Mrs. John N. Dowling  
Frances L. Drew, M. D.  
Dr. and Mrs. Julian Eligator  
Dr. and Mrs. Roger C. Emelson  
Stephanie and Fred Fall  
Barbara Feige  
Joan and Lawrence Ferlan  
Marian and Richard Finegold  
Bernard and June Fineman  
Fred F. Flugger  
Mr. and Mrs. Myron P. Garfunkel  
Ellen F. Groves  
Mr. and Mrs. Robert Hamilton  
Anne and Paul Hoffman  
Eric and Linda Hofmann  
Joan and John Humphrey  
Annabelle Joseph  
Drs. Seymoure and Corinne Krause  
Robert and Kathy Krawczak  
Robert N. Lando  
Charles J. Lang  
Judy and Lester Lave  
Sally M. Levin  
Stanley and Patricia R. Levine  
Phyllis H. Lhormer  
Elsa Limbach  
Roz and Lenny Litman  
Mr. and Mrs. Jack London  
Mr. and Mrs. Thomas Lynch, IV  
Morton and Norma Sue Madden  
Glenn R. Mahone  
Duncan and Mary McCune  
Dr. and Mrs. Thomas A. Medsger, Jr.  
Marilyn and Alan Meltzer  
R. James Mercer and Dana L. Arey  
Carol and Don Miller  
Margaret and Joseph Mima  
Mr. and Mrs. Edison Montgomery  
Laurie and Robert Moser  
Mr. and Mrs. H. Donald Moss  
Roberta and Herbert Needleman  
Ruth A. Nevins



THE  
NEIGHBORHOOD  
EXPERIENCE



**NEIGHBORHOOD CINEMAS, INC.**

P.O. BOX 97934 / PITTSBURGH / PENNSYLVANIA 15227 / 412.881.6060 / FAX: 412.881.6162



1602 EAST CARSON STREET / SOUTH SIDE / PITTSBURGH / 381.2200



**Whitehall Twin**  
*Cinemas*

WHITEHALL SHOPPING CENTER / BROWNSVILLE ROAD / 882.3075

Perfido Weiskopf Architects

City Theatre



- Donald Newman and Barbara DeRiso
- Alicia and Lewis Nordan
- Brock Onque •
- Mr. and Mrs. Eugene J. O'Sullivan
- Pittsburgh School of Massage Therapy
- Mr. and Mrs. Arthur J. Recht
- Dr. and Mrs. Paul Richter
- Louisa and Herb Rosenthal
- Bernard Roth
- Debbie and Dennis Roth
- Drs. Joyce and Ted Sandberg
- Alan A. Schick
- J.W. Schoyer and Bruce McClellan
- Esther Schreiber
- Nancy and Jerry Seiner
- Susan Shira-Nilsen
- Mr. and Mrs. Jack Shore
- Myrna and Lee Silverman
- Helena Ruoti and Sam Simone
- Murial and Stuart Spitz
- Roberta and Harry Stackawitz •
- Loretta Stanish
- Betty Anne and Ruth Stroup
- Irene and David Tabish
- Tom and Judy Thompson
- Bill Thunhurst
- Robert W. Wagner
- Peggy Walsh
- Mr. and Mrs. David Weatherwax
- Larry Weidman
- Mr. and Mrs. Norman Weizenbaum
- Wayne Wiester
- Harvey and Carole Wolsh
- Rina and Julius Youngner
- Michael and Naomi Zigmond

- ACTORS

- Francis Ahearn
- Freda C. Alber
- Mr. and Mrs. A.E. Allen
- Florine Alpern
- Mark and Margaret Ambrose
- Nora Ambrosio and David Skeeel
- Mr. and Mrs. Henry Armstrong
- Norma and Joseph Artman
- Joel Babkes
- Eleanor D. Baker
- Judith and Sidney Baker
- Glenn and Dorothy Baggle
- Susan Bails and Howard Wein
- Raymond and Harriet Baum
- C.Y. Begandy
- Celeste and Bill Behrend
- Regina and Jack Belle
- Leonard and Edith Belov
- Rosemary and Joseph Bendel
- John and Patricia Bender
- Michelle Bender
- Thomas and Gladys Benedek
- Jane Berkey and Joe Golin
- Dr. and Mrs. Michael Berman
- Aya Betensky and Robert E. Kraut
- Shirley and Milton Bilder
- Jake and Stephanie Birnberg

- Jamie and Mark Blatter
- Joan and Mark Blaustein
- Mr. and Mrs. Morton B. Blinn
- Alfred and Dolores Blumstein
- Leslie and Frederick Bonci
- Janice Boyko
- Dorothy and Howard Braun
- Dorothy and Sy Brecher
- Deborah Brooks and Tom Ogden
- Mr. and Mrs. Gilbert Broff
- Allen and Elizabeth Brown
- Mary Alice Buck
- Barbara H. Burgess
- Mr. and Mrs. Stanley A. Burleigh
- Catherine and Stuart S. Burstein, M.D.
- Ellen Sue Caldwell
- Lorraine and Ralph Carabetta
- Alvin and Sheila Catz
- Sheldon P. Catz
- William Cercone
- Christine and Douglas Chambers
- Dan and Kris Charny
- Joan and Howard Charlson
- Robert S. Chase
- E. J. Check
- Sandy and Nick Chernew
- Deborah and Richard Clark
- Rosemary K. Coffey
- Alex and Sheila Cohen
- Edith and Stephen Cohen
- Mr. Eugene S. Cohen
- Estelle and Ralph Cohen
- Sharyn and Bernie Cohen
- Stanford I. Cohen
- Susan and Gerald Colvin
- Janet and Frank Coyle
- Carl and Pat Crawford
- Alyce and Paul Culan
- Mr. and Mrs. Charles Cullen
- Lynne D. Cummings and Reed Little
- Marion and Arthur Damick
- Bernice and Harold Davis
- Marjorie Knight Deasy
- Z.L. Dermer
- Dr. and Mrs. Donald D. Davis
- Mr. and Mrs. A. DeCaria
- JoAnn and Bob Denmarsh
- Mr. and Mrs. Robert J. Dickinson
- Robert C. and Gene B. Dickman
- June and Barry Dietrich
- Peggy Dimperio
- Betty F. Diskin
- Mr. and Mrs. Samuel L. Douglass
- Mr. and Mrs. Ed Douthett
- Seymour and Ruth Drescher
- Virginia A. Elliot
- Joyce Emery
- Deborah Eustler
- Judith Evans
- Susan and William Evans
- David and Fran Fall
- Mr. and Mrs. Robert Fawcett
- Peggy Lynn Ferber
- Mr. and Mrs. Robert Fidoten

- Joseph and Rose Field
- Marvin and Johanna Fields
- Daniel Fine
- Ben and Sylvia Fischer
- Carol and Howard Fisher
- Paul and Joanna Fitting
- Mr. and Mrs. Michael Fitzgerald
- Elly Fleming
- Randal G. Forrester and Dr. James Huggins
- Al and Ann Fox
- Dr. Arthur Signorella and Dr. Kristin Frederick
- Christine and Dan Frezza
- Mr. and Mrs. Richard H. Frost
- Ms. Ann Funk
- Rose Ann Fusina
- Earl L. Gadbery
- Maya and Richard Gale
- Janet Gallaway and David Weiland
- Micci and John Gavalier
- Mr. and Mrs. William P. Getty, III
- Hugh Gilmour
- Sylvia Glaser
- Lois and George Goldstein
- Baylee and Marshall Gordon
- Dr. and Mrs. David A. Gosnell
- Mr. and Mrs. Wayne Gould
- Robert and Helene Grant
- Mr. and Mrs. Paul R. Greenaway
- Marcia and Michael Grimes
- Robert and Joanne Grimes
- Arlene and Al Grubbs
- Mr. and Mrs. Erling Haabestad, Jr.
- Adam W. Hahn
- Madeline Half
- Kathleen Sacco-Hann
- Beverly and Richard Harden
- Anne Hawkins
- Alan Helgerman and Sandra LaPietra
- Doreen and Larry Heller
- David and Sharyn Hemmerlin
- Susan and Lee Hershenson
- Daniel E. Hickey
- Dick and Rita Hill
- Ms. Seima Horvitz
- Marge Ireland
- Shawn Israel
- Mr. and Mrs. Homer James
- Alfred and Patricia Jefferson
- Mr. and Mrs. David Johnson
- Patricia C. Kanavich
- Naomi Kaplan
- Natalie and Larry Kaplan
- George C. Kasich
- Dwight and Pamela Kasperbauer
- Mitch and C. J. Kates
- Iris and Bill Kaufman
- Lillian Kefalos
- Stan and Nancy Kerr
- Ellen and Jack Kessler
- Claire Keyes



*In support of City Theatre  
for outstanding contemporary theatre*

## **Evans, Ivory P.C.**

**Paul E. Moses**

**Thomas Hollander**

**Robin S. Wertkin**

**Dennis M. Morgenstern**

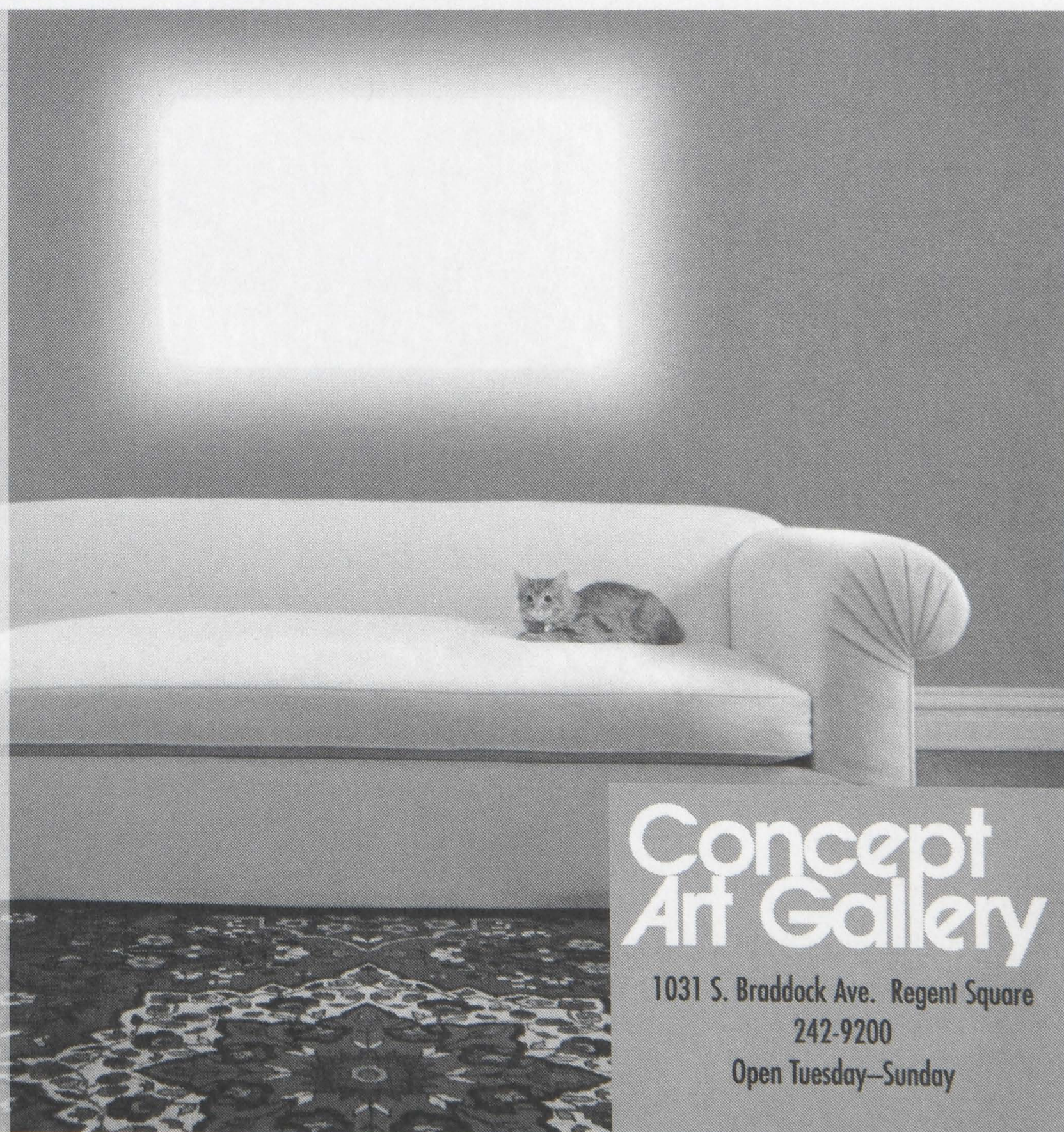
**J. Bradley Kearns**

Attorneys at Law  
1311 Frick Building

Pittsburgh, PA 15219  
Telephone (412) 471-3740

## **GET THE PICTURE**

Complete your decor  
with  
fine art from  
Concept Art Gallery.  
Our experienced staff  
can help you  
choose a picture that  
fits your style,  
space and savings.  
We welcome you  
to browse through  
Pittsburgh's  
largest collection.



**Concept  
Art Gallery**

1031 S. Braddock Ave. Regent Square

242-9200

Open Tuesday-Sunday



- Bruce A. King
- Charles Kirshner and Leone P. Paradise
- Marlis and Robert Kiser
- Esther and Bernard Klionsky
- Barbara and Sam Kolmen
- Frances Stein Kotler
- Beatrice Krebs
- Florie Krell
- Judy and Steve Laidhold
- Jennifer Lakin and Douglas Rabuzzi
- Cynthia and Kevin Lamb
- Audrey and Bob Lazar
- John and Jacqui Lazo
- Judy and Marvin Levick, M.D.
- Mr. and Mrs. Arnold I. Levine
- Betty and Milt Levine
- Claire and Larry Levine
- Clifford and Rosanne Levine
- Sandra Levine
- Dr. and Mrs. Marshall Levy
- Pamela and Gordon Lewis
- Keitha and Steven Libman
- Vernell A. Lillie
- Mr. and Mrs. John Lindquist
- Dr. and Mrs. Elmer Lipp
- Margery Loevner
- Charlotte and Randy Lott
- Joanna Schultz and John Lovelace
- Alan M. Lowe
- Janet and Lowell Lubic
- Robert and Saundra Lumish
- Lois Jean and Walter Lyman
- Laura Magee
- Tom and Mary Jo Magoc
- Dr. and Mrs. Bernard Mallinger
- Dr. and Mrs. Roy Marion
- Stanley C. Marshall
- Jean and Ned Maxwell
- Marjorie Mazer
- Ellie and Doyle McBride
- Christine A. McClure
- Mrs. W.J. McCune
- Evie McElroy
- Joanne McGarry
- Ann McIver McHoes
- Penny and Paul McKenna
- Judith Meales
- Gus Melis
- Mr. and Mrs. Ben Melnick
- Nancy and Joel Merenstein
- Dr. and Mrs. John Mikita
- Muriel and Tom Mistick
- Dr. and Mrs. Gregory A. Morris
- Mr. and Mrs. Arthur Moskowitz
- Shirley and Jim Munro
- Pamela and Peter Murray
- Susan M. Nath
- Liane E. and Robert T. Norman
- Donna and Bruce Nothmann
- Mija Novich
- Marianne Novy
- Mr. Frederick W. Okie, Jr.
- Kathleen O'Malleykennedy
- E. Travis Onque

- Mr. and Mrs. Charles P. Orr
- Joni and Stanley Ostrow
- Judy and Harry Palkovitz
- Dr. and Mrs. Richard S. Pataki
- Eric and Sharon Perelman
- Rosemarie Perla
- Edward L. Perry
- John J. Petrush
- Allan and Frances Pinsker
- Carole and Louis Pollner
- Mark H. Pollock, Esq.
- Dr. and Mrs. Roy Potter
- Linda L. Pretz
- Mr. and Mrs. Gerald Prince
- Gretchen E. Probst
- Bernadette L. Puzzuolo
- Jerry Rabinowitz and Mary Kramer
- Mr.<sup>†</sup> and Mrs. S. Raymond Rackoff
- Richard and Norma Raiff
- Dan and Lauren Resnick
- Anna Marie Reynolds
- Agnes Riley
- Mr. and Mrs. W.C. Rogers
- Edward Rogow, M.D.
- Nik and Ava Rokop
- Shoshana and Jerry Rosenberg
- Harold, Debra Nan, and Linda Ann Rubinstein
- James S. Ruggiero
- Dr. and Mrs. Marvin C. Rulin
- Barbara Russell
- Melanie Russell
- Dr. and Mrs. Russell Sacco
- Dr. James R. and Judith Galardi
- Sahovey
- Susan Saks
- Dr. and Mrs. Harold Z. Scheinman
- Dr. and Mrs. Mark Scher
- Sandy and Don Schneider
- Bobbi and Jon Schwartz
- Kenneth T. Segel
- Elenore Seidenberg
- Morton and Rita Seltman
- Dr. and Mrs. Harry Seltzer
- Mildred Shagam
- Sidney Shore
- Lyn and Alan Silverman
- Mrs. Majorie K. Silverman
- Susan L. and Arnold B. Silverman
- The Hon. and Mrs. Paul A. Simmons
- Mr. and Mrs. Alan Smith
- Beth and Donald Smith
- Henry and Adelaide Smith
- Nancy B. Smith
- Chris and Nancy Spina
- Marilyn and Michael Spiro
- Mimi and Richard Stadler
- Carol and Michael Stasik
- Kay and Ed Steiner
- Mona and E. J. Strassburger
- Ethel and Alex Strasser
- Susan H. Strauss
- Ed and Marcy Stricker

- F. J. and E. L. Suatoni
- Jean E. Succop
- Linda Swinkola
- Mr. and Mrs. Jack Swiss
- Frank and Loraine Tabakin
- Marion and Myron Taube
- Jean and Clarke Thomas
- Shirley Tucker
- Karen Tysarczyk
- Dr. and Mrs. Adrian R. Van Strein
- Nancy and Charles Watson
- Dr. Thomas and Mrs. Deborah Wein
- Mr. and Mrs. Albert Weiner
- Mr. and Mrs. Fred Werner
- Dr. and Mrs. S. Rand Werrin
- Ruth Westerman
- Tom and Bette Jane Wettach
- Kay Wetzell
- Dr. and Mrs. George R. White
- Jeffrey L. Wigton
- Mr. and Mrs. R.K. Willman
- Mr. and Mrs. Arnold D. Wilner
- Mary and Dan Wyse
- Patricia A. Zarilla

•City Theatre Board Member

<sup>†</sup>Deceased

If you find an error or omission in our contributor listings, please contact the City Theatre Development Office at 431-4400 ext. 226.



# Fresh Fish and Salsa?

Peanut butter and jelly, Fred and Ginger -- great pairs had to get their start somewhere. You may think chargrilled blue marlin with pear salsa sounds unusual, your tastebuds will prove otherwise.



Union Grill, offering fresh seafood paired with our unique salsa creations.

Stop in after the show for a late night dinner.



413 SOUTH CRAIG STREET  
IN OAKLAND 681-8620

## *Distinctively Dramatic*

Step through our doors . . . wander about . . .  
see where your imagination leads . . .

This season join The Shops in applauding the arts of Pittsburgh and in recognizing that the power of imagination can take you anywhere . . . even to an era whose time has come again.



The Shops at Station Square —  
*Distinctively Pittsburgh.*



1213 EAST CARSON STREET  
PITTSBURGH, PA 15203

PRINTING "FOR THE JOB YOU NEEDED YESTERDAY"



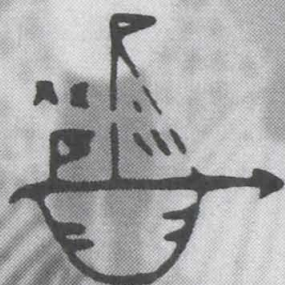
**SOUTH SIDE**

FULL SERVICE PRINTING & COPYING

(412) 431-2423

FAX (412) 431-0708

clothing, jewelry, accessories, gifts and  
..... joie de vivre!



**MACONDO**

South Craig St. 683-6486 Open Sundays

Hilb, Rogal And Hamilton Company.  
The Best Insurance Agency In The City,  
No Matter What City We're In.



**AN URBAN BED & BREAKFAST**  
discover Pittsburgh's new lodging secret

2119 Sarah Street  
in the heart of historic South Side  
431-1707



# CARLSON REAL ESTATE SERVICES

Specializing in the sale, leasing and  
development of Commercial Properties  
in Pittsburgh's South Side.

Donald M. Carlson 412-431-1718  
1205 East Carson St., Pittsburgh, PA 15203

CHINESE  
ON CARSON

FINE CHINESE CUISINE

DIM SUM

SAT & SUN  
11-4 PM

431-1717

1506 E. CARSON ST.

10%

DISCOUNT

FOR

CITY  
THEATRE  
PATRONS!



## ALL THE WORLD'S A STAGE...

Come check out the really cool scenery!

The E House  
Company

Pittsburgh's Home for Eco-Products

Eco-products for the home & more

1511 E. Carson St., South Side • (412) 488-7455

## 1889 CAFE

2017 E. CARSON ST. • SOUTH SIDE • 431-9290

Bring your tickets before the show or bring your  
stubs after the show and receive a \$5 discount\* on your second entree purchased!

\* NOT VALID WITH ANY OTHER OFFER/ONE TICKET OR STUB PER COUPLE ONLY

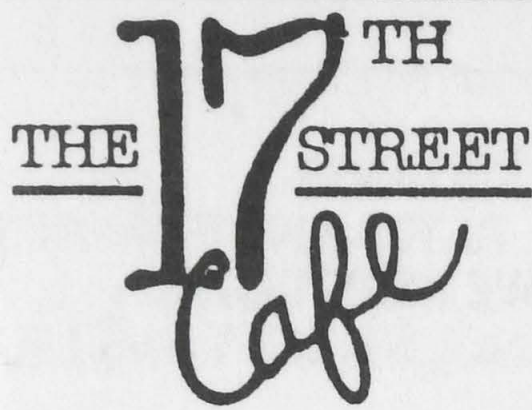
Encore  
Encore  
Encore

Memoirs and Biographies

Phone 441.2389

The stories of your life are worth repeating





**NIGHTLY DINNER SPECIALS**  
**WALKING DISTANCE TO CITY THEATRE**

**ONLY 30 YARDS OFF E. CARSON ST. • 381-4566**



**"Flowers for all occasions"**

**CINDY ESSER'S FLORAL SHOP**

**12TH & CARSON**

**431-6188**

**MANDARIN GOURMET**



**10% OFF WITH YOUR TICKETS!**

**DOWNTOWN**

305 Wood St.  
(YWCA Building)  
261-6151

Free delivery  
Banquets and parties for  
up to 200 people

**SOUTH SIDE**

(Hunan Gourmet)  
1211 E. Carson St.  
488-8100

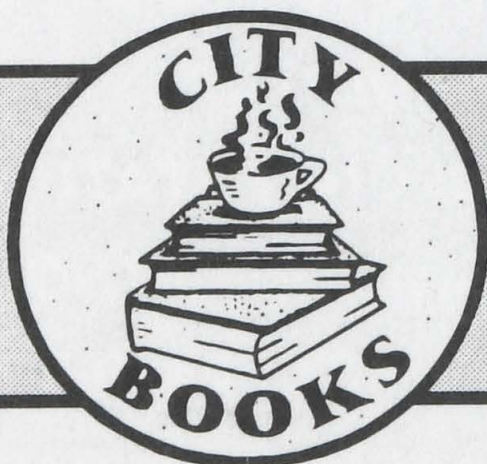
Vegetarian Menu  
Dim Sum Special  
Noodle House

**NORTH HILLS**

4812 McKight Rod.  
(across from North Hills Village)  
366-9111

Daily Buffet  
Lunch & Dinner Specials  
Sunday Dim Sum Brunch

**VOTED**



**PITTSBURGH'S BEST USED BOOKSTORE**

**1111 EAST CARSON STREET • 481-7555**

**OPEN DAILY 11 TO 11 2ND FLOOR CAFE!**

**Le Pommier**

**Valet Parking(Fri.&Sat.) 2104 E. Carson St. 431-1901**



# THE STAFF

## **A R T I S T I C**

### **PRODUCING DIRECTOR**

MARC MASTERSON

### **ASSOCIATE ARTISTIC DIRECTOR**

RICHARD KEITEL

### **ASSOCIATE ARTIST**

JED ALLEN HARRIS

### **ARTISTIC DIRECTOR OF OUTREACH**

RONI OSTFIELD

### **DRAMATURG**

GWEN OREL

### **ASSISTANT LITERARY MANAGER**

JOHN HENNING

## **P R O D U C T I O N**

### **TECHNICAL DIRECTOR AND RESIDENT SCENERY & PROPERTIES DESIGNER**

TONY FERRIERI

### **RESIDENT LIGHTING DESIGNER**

WILLIAM O'DONNELL

### **RESIDENT COSTUME DESIGNER**

LORRAINE VENBERG

### **RESIDENT SOUND DESIGNER/ENGINEER**

JONATHAN BURKE

### **RESIDENT ASSOCIATE SCENERY & PROPERTIES DESIGNER**

RHODA HARTMANN

### **PRODUCTION STAGE MANAGER**

PATTI KELLY

### **SCENE SHOP FOREMAN**

PAUL FORD

### **MASTER ELECTRICIAN/LIGHT BOARD OPERATOR**

HOLLY A. KOENIG

### **SCENIC ARTIST**

JASON SZALLA

### **SCENE SHOP TECHNICIANS**

MARK EYER, PAUL FORD, DALE HARPER,

DEBBY SULLIVAN, JASON SZALLA

## **A D M I N I S T R A T I V E**

### **GENERAL MANAGER**

ADRIENNE KERIOTIS

### **DIRECTOR OF DEVELOPMENT**

KARLA BOOS

### **DIRECTOR OF MARKETING & COMMUNICATIONS**

PAUL FLAHERTY

### **DIRECTOR OF CUSTOMER SERVICE & SALES**

LORA OXENREITER

### **DIRECTOR OF SALES**

ERIC NELSON

### **MAINTENANCE MANAGER**

DARNELL PATTERSON

### **HOUSE MANAGER**

MARLENE H. ELLIS

### **BOOKKEEPER**

KATHY BARTHA

### **ASSOCIATE BOX OFFICE MANAGER**

LAURA A. MCCARTHY

### **BOX OFFICE ASSISTANTS**

VEDA LAINE, BETH ANNE MARCHAL

### **ADMINISTRATIVE ASSISTANTS**

JOHN HENNING, STACEY SMITH

### **INTERNS**

RASHEED CLARK, ELENA DEVERS,

DANIELLA J. TOPOL

### **TELEMARKETING STAFF**

MICK KAROLAC, JINNY PAULEY, TIM

SEDWICK, ANDREW C. STOWELL,

MARY BETH TOOMEY, CECILIA

WHEELER, JESSICA WINTER

### **PHOTOGRAPHER**

SUELLEN FITZSIMMONS

### **CONCESSIONS**

RUSTICA INTERNATIONAL,

LUCY WRZESINSKI

**G R E A T**  
**A R T**

- **CONTEMPORARY MASTERS  
ORIGINAL LITHOGRAPHS**
- **ANTIQUE PAINTINGS**
- **INLAID MARBLE TABLES**
- **SCULPTURE**
- **BRONZE STATUARY**
- **MODERN LITHOGRAPHS**
- **FANCY FRAMES**
- **ARCHITECTURAL  
ARTIFACTS**
- **STAINED GLASS**
- **OLD MASTER DRAWINGS**
- **AND MUCH, MUCH MORE!**

**SOUTH BANK  
GALLERIES**

1300 E. CARSON ST. SOUTH SIDE  
488-6688 TUES THRU SAT 11 AM - 5PM





***We admire your energy.***

The final product is breathtaking to behold. And we understand all the pain and strain it took to get there.

Blue Cross and Blue Shield salute the fine actors in our performing arts community. We know it takes energy to get where you want to be. And that's why we work so hard to help people determine which of our many health care coverage plans is exactly right for them.

**Keeping the Spirit Alive.**



**Blue Cross**  
of Western Pennsylvania  
Pennsylvania  
**Blue Shield**

*Independent Licensees of the Blue Cross and Blue Shield Association.*



# Bravo!

*We're proud  
to be a leading sponsor  
of City Theatre  
and the great performances  
it brings to our community.*

**PNC BANK**

*Where Performance Counts<sup>SM</sup>*

Member FDIC