

2001 • 2002 SIGNATURE SERIES

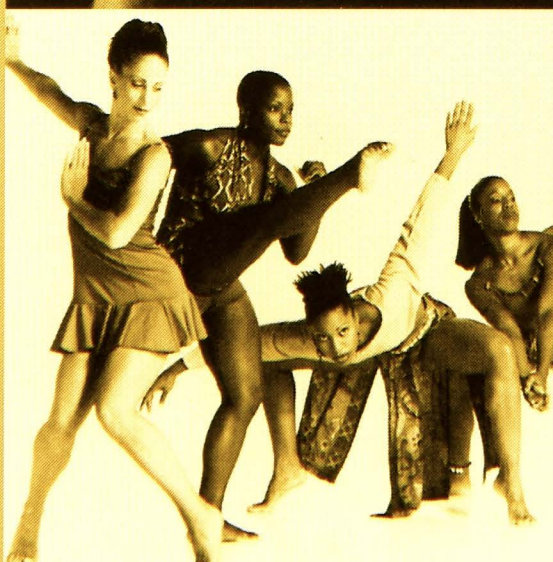
RIALTO

CENTER FOR THE
PERFORMING ARTS

GEORGIA STATE UNIVERSITY

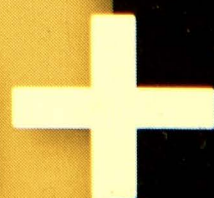
SEASON

5

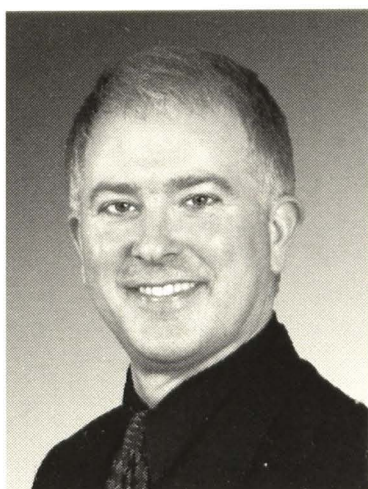


WIDE

WORLD



www.rialtocenter.org



Welcome to the Rialto Center for the Performing Arts at Georgia State University. We are so pleased you've chosen to join us for this Signature Series performance.

The space in which you're seated opened in 1996, when a long-abandoned movie theater was converted into the Rialto Center for the Performing Arts. Today, the Rialto serves two primary functions.

First, we are a presenting organization. Every year, I select the musicians, dancers, vocalists, and actors that make up the Signature Series, a presenting series designed to bring Atlanta the best of the world's performing arts. This year's 16 performances make up our fifth Signature Series season. If this is your first Signature Series performance, welcome! We hope you'll join us again and again. If you're already a regular, we're glad to have you back.

Second, the Rialto is a rental house. You may have been here before, to attend a company meeting. Or perhaps a child's dance recital. Or maybe a movie screening. The Rialto is rented regularly by corporations and non-profit organizations, which hold everything from private functions to public galas. We're glad to have them all. (And if you're interested in renting the Rialto, our Events Office would be delighted to talk with you!)

One other thing I'd like you to know. As an Atlanta arts organization, the Rialto welcomes the contributions of corporations and individuals. Thanks to these donations, tickets cost much less than they would otherwise. To continue the high caliber of these performances, we'd be pleased to have you join our contributors by becoming a member of the Rialto Connection. Just call us or tell a friendly staff member that you'd like to join.

And finally, above all, the Rialto is a cultural cornerstone for downtown. As a part of Georgia State University, we are helping revitalize downtown for all metro Atlantans. Downtown is safer, and friendlier, because you chose to attend this performance. Please come again!

Sincerely,

Bill Baites

Managing Director

Rialto Center for the Performing Arts



2001-2002 Signature Series

presents

The SITI Company

performing

War of the Worlds

Radio Play by Howard Koch

Based on the novel by H.G. Wells

Directed by Anne Bogart*** and Darron L West

Cast

(in alphabetical order)

J.Ed Araiza* Shawn Fagan* Jeffrey Fracé*

Susan Hightower* Bray Poor* Danusia Roberts* Stephen Webber*

Lighting designed by Brian H. Scott

Costumes designed by James Schuette**

Sound designed by Darron L. West

Company Stage Manager: Elizabeth Moreau*

Development Associate: Chris Wight

Managing Director: Megan Wanlass Szalla

Running time is approximately 1 hour with no intermission.

War of the Worlds is performed under license from Anne Koch.

2001-2002 Season Sponsors



ON PEACHTREE STREET
Preferred Hotel of the Rialto Center



Presenting Media Sponsor



The Airline of the Rialto Center

October 19-20, 2001 7:30 p.m.

The taking of photographs and the use of recording devices during this performance is strictly prohibited.

*Members of Actors' Equity Association, the union of professional actors and stage managers of the United States.

**Member of the United Scenic Artists Union (USA).

***Member of the Society of Stage Directors and Choreographers, Inc. (SSD&C), an independent national labor union.

*Premiered October 30, 1999 at The West Bank Café in New York City.
The Kennedy Center, Washington, D.C., February 2000.
Edinburgh International Festival, August 2000.
Utah State University, Logan, Utah, January 2001.
Skidmore College, Saratoga Springs, New York, June 2001.*

Exclusive Tour Representation:
Rena Shagan Associates, Inc.
16A West 88th Street
New York, NY 10024
(212) 873-9700 FAX (212) 873-1708
www.shaganarts.com

PROGRAM NOTES

On the foggy fall evening of October 30, 1938, America went to war with Mars! Adapted for radio by Howard Koch and starring Orson Welles, *War of the Worlds* was presented as a Halloween thriller, or as Welles put it: "The Mercury Theatre's own radio version of dressing up in a sheet and jumping out of a bush and saying 'boo!!'" But, for those who tuned in late, 'normal' programming appeared to be interrupted with the startling news that there were "explosions occurring on Planet Mars!" Reports followed stating that a "huge, flaming object" had fallen to earth on a farm near Grover's Mill, New Jersey. More landings were soon reported and an anxious radio audience came to the frightening conclusion the Earth was the target of a full-scale invasion by aliens!

War of the Worlds is the program which terrified a nation. Thousands fled their homes in panic. In New York City, swarms of curious and frightened citizens crowded the streets to catch a glimpse of a "real space battle." In the town of Grover's Mill, the local water tower was pumped full of buckshot as frightened believers fired at what they thought was a "giant Martian war machine." The true power of broadcast made itself known on this Halloween Eve in 1938, and no one has forgotten the chilling fear and awesome force of this, radio's single most famous broadcast.

Now, 63 years after the original broadcast, this radio classic comes to life as performed by the SITI Company. This staged version of the H. G. Wells/Howard Koch/Orson Welles/Mercury Theatre on the Air *War of the Worlds* is part of the SITI Company's investigation into the life and work of the genius Orson Welles for our production, also entitled *War of the Worlds*, about this extraordinary American artist. Written by Naomi Iizuka, *War of the Worlds* premiered at the Humana Festival of New American Plays at Actors Theatre of Louisville in March of 2000.

We hope you will enjoy this evening as much as we have enjoyed the preparation of it for you.

THE SITI COMPANY

The SITI Company, celebrating its tenth year of activity, began as an agreement between Tadashi Suzuki and Anne Bogart to establish a new venture in the United States that would emphasize international cultural exchange and collaboration. SITI believes in a commitment to the power of the theater as a source of spiritual strength in the contemporary global environment. Originally envisioned as a summer institute in Saratoga Springs, NY, SITI grew quickly into a year-round theater company based in New York City. Saratoga Springs is now SITI's summer home.

An ensemble-based theater company, SITI exemplifies the disciplines it practices and the artistic values it develops in its work. The company's mission is to create new works for the theater, to perform and tour these productions nationally and internationally, to provide ongoing training for young theater professionals in an approach to acting that forges unique and highly disciplined artists for the theater, and to foster opportunities for cultural exchange with theater professionals and audiences from all over the world.

In addition to Artistic Director Anne Bogart, the SITI Company is comprised of eleven actors, five designers, a production manager, stage manager, development coordinator and managing director. The company represents a change in thinking about the relationships between artists and institutions. One way SITI is accomplishing its mission is by integrating into other organizations of the existing American and international theater systems. Examples include our ongoing relationships with Wexner Center for the Arts, Ohio State University; Walker Art Center, PICA; Actors Theatre of Louisville; Perseverance Theater; City Theatre in Pittsburgh; the Toga International Arts Festivals; Theatre Archa in the Czech Republic; and the New York Theatre Workshop. SITI's affiliations with universities include: New York University; Juilliard; Columbia University; Fordham University; The Ohio State University; Miami University; Bard College; University of Minnesota; University of Louisville; Carnegie Mellon; Pittsburgh University; Emory University; and U.C. Berkeley. Every June the company continues to gather for our annual Summer Intensive at Skidmore College in Saratoga Springs. Internationally, SITI has performed and led training in Japan, Germany, France, The Czech Republic, Wales, the Georgian Republic, Ireland, Turkey, Italy, Australia, Canada, Colombia, Scotland, England, Israel and Holland.

Most recently, SITI has created two new productions: *bobrauschenbergamerica*, which opened at Actors Theatre of Louisville's Humana Festival of New American Plays, which will tour during the 2002-2003 performance season and *Room*, which premiered at the Wexner Center for the Arts at Ohio State University, ran at City Theatre in Pittsburgh, PA, and will tour during the 2001-2002 performance season. *War of the Worlds* opened the Brooklyn Academy of Music's Next Wave Festival. Other SITI productions include: *Orestes*; *The Medium*; *Small Lives/Big Dreams*; *Going, Going, Gone*; *Miss Julie*; *Culture of Desire*; *Bob*; *Private Lives*; *Alice's Adventures*, *War of the Worlds – The Radio Play* and *Cabin Pressure*. Other future productions include: *Score*, *The Rachel's Project* and *Reunion*.

The SITI Company is: Akiko Aizawa*, J. Ed Araiza*, Anne Bogart, Will Bond*, Susan Hightower*, Leon Ingulsrud*, Ellen Lauren*, Kelly Maurer*, Charles L. Mee, Jr., Elizabeth Moreau*, Tom Nelis*, Barney O'Hanlon*, Neil Patel, James Schuette, Brian H. Scott, Mimi Jordan Sherin, Megan Wanlass Szalla*, Stephen Webber* and Darron L West.

SITI Company Associates: Shawn Fagan, Jeffrey Fracé, Christopher Healy, Kurt Kellenberger, and Donnie Mather.

Accountant: Joseph A. Panasci

Travel agent: Brenda Dickey, Travel Time

For more information on the company and its training programs and performances; to purchase copies of Anne Bogart's Books, *A Director Prepares* or *Anne Bogart: Viewpoints*; or to purchase a SITI Training T-shirt or make a tax-deductible contribution in support of SITI, please contact:

The SITI Office / PO Box 1922 / Old Chelsea Station / New York, NY 10011.
212.477.1469 (phone) / 212.477.0564 (fax) / e-mail: TheSITICo@aol.com
or visit SITI's web site at <http://www.siti.org>

CONTRIBUTORS TO THE SITI COMPANY

The SITI Company is deeply grateful to the generous donors who are listed below.

New York State Council of the Arts

Anonymous

Jaan Whitehead

Shubert Foundation

JKW Foundation

Martha Boschen Porter Fund, Inc.,

Marianne McDonald

Bob McElya

George Wanlass & Karen Carson

Catherine & Matt Mandel

To become a contributor to the SITI Company, please call the SITI office for further information at 212.477.1469.

All donations to SITI listed in this program include gifts and pledges received through October 2, 2001.

BIOGRAPHIES

J. Ed Araiza (Ensemble)

SITI Company credits: *bobrauschenbergamerica*, *Culture of Desire*, *The Medium*, *SmallLives/Big Dreams*, *War of the Worlds* and *War of the Worlds - The Radio Play* at Actors Theatre of Louisville, New York Theatre Workshop, Walker Arts Center, City Theatre in Pittsburgh, Wexner Center, Theatre Artaud in San Francisco, Dublin Theatre Festival, Toga Arts Festival, Olympic Arts Festival, Joe's Pub at The Public Theatre, The Kennedy and Edinburgh International Festival. Regional Theater: *The Cure at Troy*, Yale Rep.; *Santos and Santos*, Mixed Blood Theatre; *Keely and Du*, Hartford Stage and ATL; *1969 and Picnic*, ATL; *Yerma*, Arena Stage; *Principia Scriptoria*, A Contemporary Theatre; *Charley Bacon*, South Coast Rep.; *King Lear*, *Macbeth*, *La Victima*, Los Angeles Theatre Center. Off Broadway; *Orestes*, *Occasional Grace*, En Garde Arts; *Words Divine*, Intar; *Eastern Standards*, Duo Theatre; *Body Game*, Theatre for the New City; *Raft of the Medusa*, Minetta Lane Theatre. J. Ed was a member of El Teatro de la Esperanza. Mr. Araiza teaches and studies with The SITI Company.

STATE OF THE ART
IN THE CENTER OF ATLANTA.



Photo by Rion Rizzo

The Rialto Center for the Performing Arts is the perfect venue for everything from an executive planning session to an unforgettable corporate event. Located in the heart of downtown Atlanta's historic Fairlie-Poplar district, it is a unique site for event and conference planners, and features a 833-seat theater complete with state-of-the-art sound and lighting systems.

For receptions, our 5,600 sq. ft. lobby includes ground floor and mezzanine levels as well as a catering kitchen. And our black box studio is ideal for smaller meetings.

For date availability, a complete rental kit and/or a tour of our facilities, call Kelly Treadway at 404-651-1285.

RIALTO

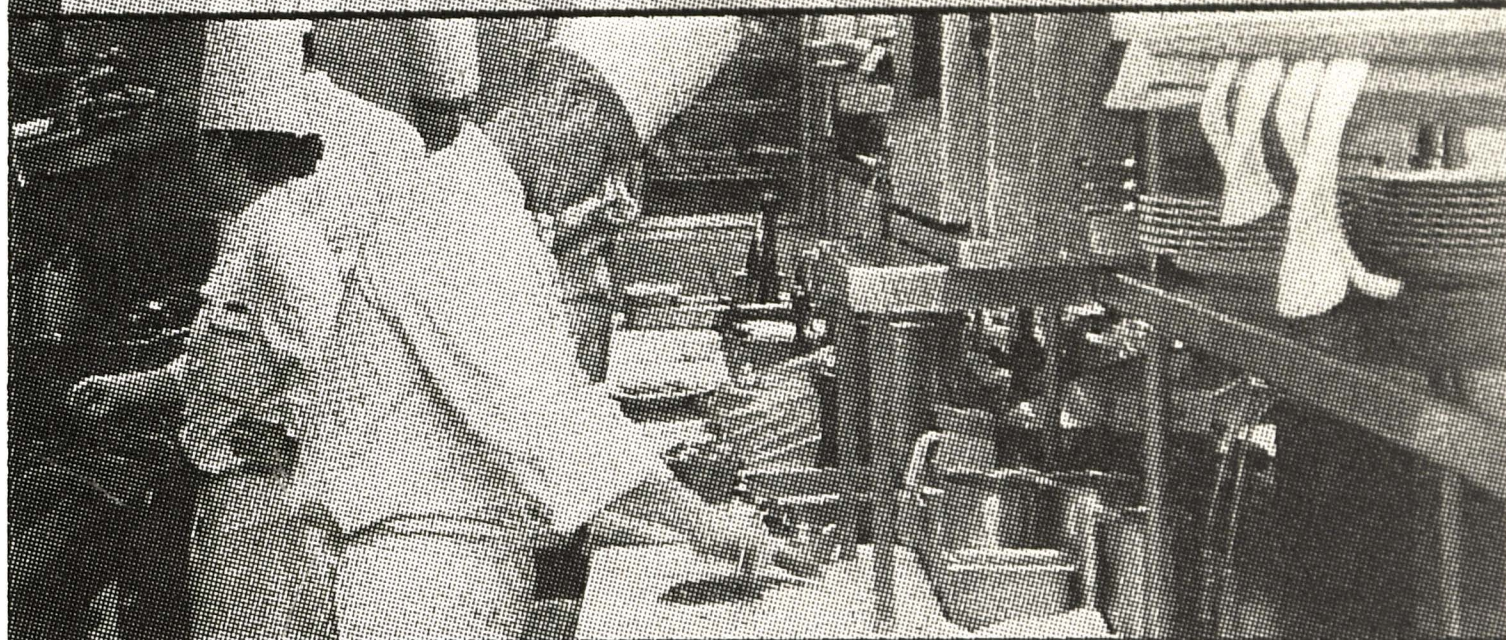
CENTER FOR THE
PERFORMING ARTS

GEORGIA STATE UNIVERSITY

www.rialtocenter.org



AN AMERICAN RESTAURANT



BRILLIANT PERFORMANCES

IN THE HEART OF MIDTOWN

Before an evening of the Arts, join *Park 75* as we present the Seasonal New American cuisine of Chef Kevin Hickey. Accented by his distinctive "layers of flavors," including extensive vegetarian offerings, Hickey's daily performances focus on the finest ingredients and cross-cultural influences. A wine buff, he creates *Park 75*'s menus around a strong but concise wine list that boasts many boutique labels and a good balance of American and international selections. A perfect complement to an evening of culture.

FOR RESERVATIONS PLEASE CALL 404.253.3640
(COMPLIMENTARY VALET)

75 FOURTEENTH STREET • ATLANTA, GA 30309

Anne Bogart (Co-Director)

Ms. Bogart is the artistic director of The SITI Company. Recent productions with SITI include *Room* (Wexner Center and City Theatre); *War of the Worlds* (ATL/Humana Festival of New American Plays, Edinburgh International Festival and BAM's Next Wave Festival); *BOB* (Wexner Center for the Arts/SITI); *Culture of Desire* (a co-production of SITI, City Theatre, and Portland Stage Company); *Private Lives* by Noel Coward and *Miss Julie* by August Strindberg (Actors Theatre of Louisville/SITI); and *Alice's Adventures* (Wexner, City Theatre, City Stages, SITI); as well as *Small Lives/Big Dreams*, *Going, Going, Gone*, and *The Medium* (SITI). She is the recipient of two Obie Awards, a Bessie Award, and a Guggenheim Fellowship. Bogart is currently an associate professor at Columbia University.

Shawn Fagan (Ensemble)

SITI Company credits: *War of the Worlds - The Radio Play*, *Alice's Adventures*. Regional theatre credits include: *A Moon for the Misbegotten* (Delaware Theatre Company); *The Wizard of Oz* and *A Christmas Carol* (Actors Theatre of Louisville). Recent New York credits include *Hamlet*, *Gull*, and *Fanatics* (Ellen Beckerman & company); *The High Priest of Bad Math* (Ontological Theatre); *Antigone* (Horace Mann Theatre); *Freakshow* (Clubbed Thumb). Shawn was a member of the 1997-98 Apprentice Company at Actors Theatre of Louisville and is a graduate of the University of Delaware, a member of Ellen Beckerman & Company, and a SITI Associate.

Jeffrey Fracé (Ensemble)

SITI Company credits: *War of the Worlds - The Radio Play*, *Culture of Desire* (in Portland and Bogota). Also with Anne Bogart: *American Silents*. He recently played Kochkaryov in Gogo's *Marriage* in Switzerland and Agamemnon in Chuck Mee's *Agamemnon 2.0* in New York. Other activities include ongoing collaborations with the dance company Laika and various directing projects in opera and theater. He is an Associate Member of SITI. MFA, Columbia University.

Susan Hightower (Ensemble)

Susan has trained and performed with the SITI Company on many occasions since its inception. SITI shows include the role of Alice in *Alice's Adventures*, understudy for Ellen Lauren in *Culture of Desire*, and SITI's inaugural production of *Orestes*. Susan was most recently seen Off-Broadway in Fassbinder's *The Bitter Tears of Petra von Kant* and as Clytemnestra in Chuck Mee's *Agamemnon 2.0*.

Bray Poor (Ensemble)

Stage: New York: *Richard II*, *Merry Wives of Windsor* at The Public, *Demonology* at Playwrights Horizons, *Fastest Clock in the Universe* with The New Group. Regionally: *Abstract Expression* at the Long Wharf, *Changes of Heart* at Berkeley, *Mirandolina* and *Abingdon Square* at San Diego Rep., several productions at the Old Globe and a few at Williamstown Theatre Festival. Television: *Work With Me*, *Homicide*, *Cosby*, *Law and Order*, *New York Undercover*, *Spin City*. Film: *Entropy*, *The Two Ninas*, 1999, *Mighty Aphrodite*, *Clockers*, *Anima*, *Girl 6.*, *Scarred City*.

Elizabeth Moreau (Company Stage Manager)

With the SITI Company: *bobrauschenbergamerica* (ATL/Humana Festival), *Bob* (BITE Festival, London), *Cabin Pressure* (Israel Festival), *War of the Worlds* (Edison Theatre, St. Louis). Other credits include: *Dirty Blonde*, *Bells are Ringing*, *Getting and Spending* on Broadway. Off-Broadway: *Kit Marlowe*, *In the Blood* (The Public), *Avow* (Century Center), *Lydie Breeze*, *What You Get and What You Expect* (New York Theatre Workshop), *Dream True*, *Mercy* (Vineyard), *Red*, *The Memory of Water* (Manhattan Theatre Company), *Chemistry of Change* (Women's Project/Playwright Horizons).

Danusia Roberts (Ensemble)

Danusia was last seen at the Horace Mann Theatre in Howard Barker's *Scenes from an Execution*. She also starred in *The Birth of Anne Frank* and *Miracle Now* with The Black Lips Theatre Company at P.S. 122. Danusia is a member of the acting company for Columbia University's Director's Program run by Anne Bogart & Robert Woodruff. In film, she appears in *Acts of Worship* directed by Rosemary Rodriguez and shown recently at Sundance Film Festival. Originally from Poland, she has a background in classical music with degrees from Lodz University and a BFA in photography from NYU. As a musi-

cian she has toured Europe and the USA with FUR, a punk rock band that she co-founded. The band's music is on the Blackout Records label.

James Schuette (Costume Design)

Recent work includes: *Lady in the Dark* (Prince Music Theatre), *Mother Courage and her Children* (Steppenwolf), *Big Love* (Long Wharf, Berkeley Rep., Goodman) and *Lillith* (New York City Opera). His work with The SITI Company includes: *bobrauschenbergamerica* (sets and costumes), *War of the Worlds*, *Cabin Pressure*, *Room*, *BOB*, *Alice's Adventures*, *Private Lives*, and *The Adding Machine*. Other work includes *Floyd Collins* (Old Globe, Goodman, Prince); *Berlin Circle*, *Time to Burn*, *Space* (Steppenwolf); *Saturn Returns*, *The Treatment*, *The Chang Fragments*, *Insurrection: Holding History*, *Book of the Dead* (Public); *The Seven Deadly Sins* (NYCO); *Transatlantic* (Minnesota Opera); *La Bohème* (Glimmerglass Opera and NYCO); *Carmen* (Sante Fe Opera); Laurie Anderson's *Songs and Stories from Moby Dick* (BAM Next Wave Festival) and work at Mark Taper Forum, New York Theatre Workshop, and En Garde Arts. He is a graduate of Yale School of Drama.

Brian Scott (Lighting Designer)

SITI Company Lighting Designer for *bobrauschenbergamerica* and *The Radio Play*. Past lighting designs include: *Gertrude and Alice* with Mimi Sherin for the Foundry Theatre; *Big Love* for The Rude Mechanicals in Austin, Texas; *The Epiphany Project* with composer John Hodian and songwriter Bet Williams; *Le Femme de Chambre* for Banal Molotov in Paris; *The Trojan Women* for Williams College and Will Bond; and numerous projects while at Actors Theatre of Louisville. Additionally, Brian has adapted numerous designs by Mimi Jordan Sherin and Christopher Akerlind in National and International tours for the SITI Company including: *Bob*, *Room*, *Cabin Pressure*, *War of the Worlds*, and *Alice's Adventures*. Future projects include: a tour of *Lipstick Traces* for the Rude Mechanicals, *The Rachel's Project* for the SITI Company, and work with Christopher Akerlind on *Score* also for SITI.

Stephen Webber (Ensemble)

Has performed with SITI: *War of the Worlds* (Orson Welles), *Cabin Pressure*, *Private Lives*, *The Medium*, *War of the Worlds - The Radio Play*, *Culture of Desire*, and *Going, Going, Gone*. Off Broadway: *Trojan Women/A Love Story* at En Garde Arts and *Culture of Desire* at New York Theatre Workshop. Regional Theater: Actors Theatre of Louisville, Stage West, Portland Stage Company, City Theatre in Pittsburgh, and Milwaukee Repertory Theater. He also performed *Hamlet* at the Toga International Arts Festival in Toga-Mura, Japan.

Darron L West (Co-Director, Sound Designer)

Has been a SITI Company member since 1993 and first collaborated with Anne Bogart in 1990 while resident sound designer at Actors Theatre of Louisville. Since joining The SITI Company, he has designed every show in the company's repertoire with *Bob* garnering a 1999 Obie Award and Drama Desk nomination for its soundscape. He is a design associate and "usual suspect" at New York Theatre Workshop, a two-time American Theatre Wing and three time Drama Desk nominee for sound design, as well as 1997 Princess Grace and 2000 EDDY award winner for his work with The SITI Company. Directing credits include the SITI Company's *War of the Worlds - The Radio Play*, Sarah Ruhl's *Euridice* at CTC Minneapolis and Charles Mee's *Big Love* with The Rude Mechanicals in Austin, Texas. Broadway: Philip Glass at Avery Fisher Hall and Quentin Tarrantino's *Wait Until Dark*.



Rialto Connection Donors

Patrons

(\$5,000 +)

Stephen F. Dull*
Powell, Goldstein, Frazer
& Murphy, LLP

Producers

(\$2,500 - \$4,999)

William L. Baites

Directors

(\$1,000 - \$2,499)

Tim Cobb
Stephen A. Dawkins, M.D.
Laurence O. &
September Gray
Carol D. Newman

Stars

(\$250 - \$999)

Matthew & Natalie Bernstein
Michael D. Easterly
Olivia and Alston Gardner
W. Bruce Harlan &
Lisa Cremin
Gulshan Harjee, M.D.
Maynard Jackson
Peggy & Gerald McCormick

Dr. Sally Monsour

Andrea & Ned Montag

Al Outland

Kurt Rachwitz &

Pamela Thomas

A. Michelle Smith

Fred B. Smith

Anne Sterchi

Adrienne Whitehead

Robert Yellowlees

Partners

(\$100 - \$249)

Randy Altmann*
J. & K.A. Bacheller
Andrew J. Bain &
Sarah A. Roe
Paula Lawton Bevington
Ina & Carl Born
Julie Fishman &
Terry Pechacek
Fernando &
Sara Gonzalez
Michael Grover &
Nunzio Lupo
Lisa E. Hodge
James & Janet Love
Stuart A. Peebles

John S. Ricaud

Paul S. Scharff

Verah M. Turner

Scott & Raye Varney

Friends

(\$35 - \$99)

Ronald J. Atkins
Blue Linden Group
Scott Chalk
Jeannette Wimbish Gaston
Christopher E. Graves
Kristin Lewis Grice
Mr. & Mrs. Alan E. Pinado
Kenneth & Chung Warren
Andy Weiskoff &
Judy Aehle

In-Kind Gifts and Services

Olympus Limosines
Pancerz & Associates
Mumbo Jumbo
New Horizons
Lighting and Production
Equipment, Inc.
Diaz Foods
Gambrinus Company

All donors listed above have given a gift and/or pledge between January 1, 2001
and October 15, 2001.

*We are grateful to these donors and their employers for their matching gifts. Please check to see if your employer will match your contribution to the Rialto Center for the Performing Arts.

The Rialto Center for the Performing Arts is a member of the Atlanta Coalition of Performing Arts, the Metro Atlanta Chamber of Commerce, the Atlanta Convention and Visitor's Bureau, the Fairlie-Poplar Task Force, the Association of Performing Arts Presenters, and the International Society for the Performing Arts.



Administration

William L. Baites, *Managing Director*
André C. Allen, *Stage Manager*
Harlee Butler, *Assistant to the Events Manager*
Jaime Davidson, *Production Manager*
Rasheed Dawodu, *Business Manager*
Patricia Denton, *Ticket Services Coordinator*
Charesse Doctor, *Ticket Services Coordinator*
Hunter Hanger, *Development Coordinator*
Tamara Johnson-Solomon, *Assistant to the Business Manager*
Laverne Perry, *Ticket Services Coordinator*
Jennifer Staats Moore, *Ticket Services Manager*
Kurt Rachwitz, *Development Director*
Mary Ricks, *Ticket Services Coordinator*
Jamie Samuel, *Assistant to the Managing Director*
Kelly Treadway, *Events Manager*
Raye Varney, *Manager of Marketing and Public Relations*
Marsha Walker, *Front-of-House Manager*
Sara Zastoupil, *Marketing Coordinator*

Front of House Staff

Evelenia Bowman, Kareem Brown, Javon Green, Delores James,
Evelyn Kemp, Vera Mack, Irene Midgette, Donnell Morgan, Pearline Reed

Backstage Crew

Aaron Barnes, Parker Gray, Calvin Johnson, Robert Murray,
Kenny O'Neal, Catherine Tate, English Toole,
George Werner, Korey Washington, Jonathan White

Board of Advisors

Helen Aderhold, Paula Lawton Bevington, Michael Chriszt,
Steven Dawkins, M.D., Lesley Grady, Laurence O. Gray, W. Bruce Harlan,
Lindsey L. Harris, Beverly Losman, Peggy V. McCormick, Ned Montag,
Nancy Nolan, Al Outland, Alex Suarez, A. Michelle Smith,
Anne Sterchi, Adrienne Whitehead

Ex Officio Members

Dr. John Haberlen, Katherine Johnston, D. Robert McGinnis, Dr. Carl V. Patton

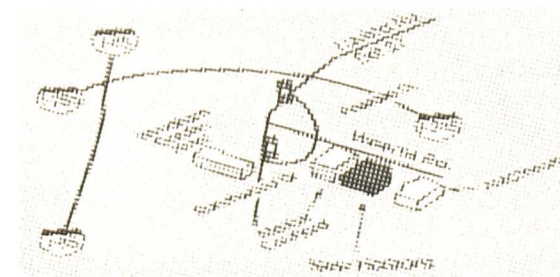
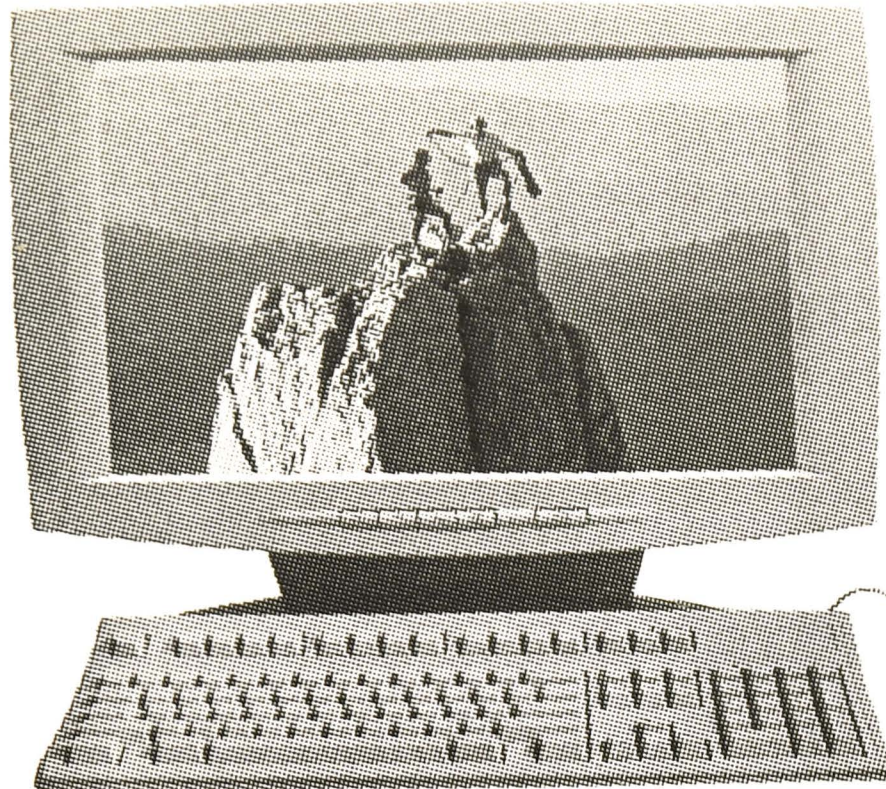
FOR THE FINEST IN COMPUTER TRAINING, LET NEW HORIZONS TAKE YOU HIGHER.

Lotus

Authorized
Education
Center

Microsoft
Technical
Education
Center

CIW
CERTIFIED
INTERNET
WEBMASTER



New Horizons
Computer Learning Centers
World leader in computer training.

Winner of the 2001 Consumer Choice Award for Computer Training

- Day, evening and weekend classes
- One student, One computer
- Certified, dynamic instructors
- 1,000's of classes for PC & MAC
- Club memberships for best value
- Authorized technical training
- Hands-on computer labs
- Training software on CD-ROM
- Certification testing on-site
- 24-hour help desk



Call today to reserve your seat.
770-270-2000 ext. 139

CompTIA **A+ Certification** **Network +** **IT-Net +**
A CompTIA Certification Program

Redeem this coupon for your
FREE audit in:

A+, CISCO, MCSE, JAVA, MCDDBA, ORACLE, UNIX,
CIW, NOVELL, LOTUS NOTES

Name: _____

Audit Class: _____

**Call to
Schedule
770-270-2000
ext. 139**

Redeem this coupon for your
FREE 1 day class in:

Powerpoint2000, Word2000, Excel2000, Outlook2000,
FrontPage2000, HTML4.0, Windows2000

Name: _____

Audit Class: _____

**Call to
Schedule
770-270-2000
ext. 139**

THE FINE PRINT

TICKETS: Tickets are available for purchase by phone at 404-651-4727, online at www.rialtocenter.org, or in-person at the Rialto Box Office on 80 Forsyth Street. Box Office Hours: Monday - Friday, 10 a.m. - 4:30 p.m.

WEBSITE: Visit www.rialtocenter.org for a complete calendar of events or to buy tickets.

REFUNDS & EXCHANGES: All sales are final with no exchanges or refunds. Patrons may return their tickets prior to the performance for a tax-deductible donation.

USHERING: Interested in volunteering as a Rialto usher? Call House Manager Marsha Walker at 404-651-3618.

PARKING: The Equitable Building parking deck, located on the corner of Fairlie and Williams streets, provides official parking for the Rialto Center.

SPECIAL NEEDS: The Rialto Center is fully accessible to patrons with special needs. Wheelchair seating may be reserved in advance. Patrons who are Deaf or hearing-impaired may call us through the Georgia Relay Service, TDD 1-800-255-0056.

IN CASE OF EMERGENCY: The exit sign closest to your seat shows the shortest route out of the theater. In case of an emergency, please walk to the exit.

ETIQUETTE: Smoking is permitted outside only. Food and drink are not permitted in the hall. Late-arriving patrons will be seated at the discretion of the House Manager during a pause in the performance. Please refrain from talking during the performance.

CAMERA/RECORDING DEVICES: The use of cameras or sound recording equipment without the written permission of the management is strictly prohibited.

LOST AND FOUND: For items lost or left at the theater, please call the House Manager at 404-651-3618.

The Rialto Center offers an exceptional alternative to the usual event facility. For date availability, a rental booklet, or a tour of our facilities, please call us at 404-651-1285.

©2000 Delta Air Lines, Inc.

passenger records

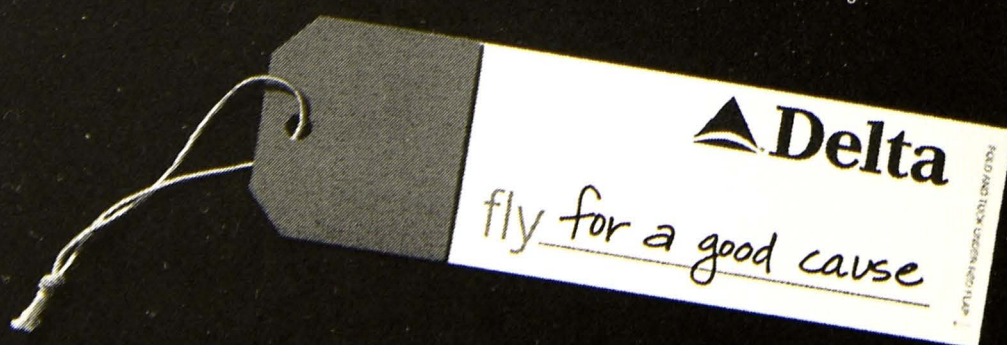
Give back when
you take off

Delta community commitment means:

supporting youth wellness & leadership development

helping to fight disease

trying to make a difference



delta.com

THE RIALTO 2001-2002 SIGNATURE SERIES. BRINGING YOU THE WORLD IN ALL ITS FLAVORS.



Sat., Sept. 15, 7:30 pm

Patti LuPone

Fri.-Sat., Oct. 19-20, 7:30 pm

The SITI Company
War of the Worlds

Sat., Oct. 27, 7:30 pm

Afro-Cuban All Stars

Sun., Nov. 4, 7:30 pm

Mickey Hart • Bembé Orisha

Sat., Nov. 17, 7:30 pm

Philadanco

Fri., Dec. 14, 7:30 pm

Sat.-Sun., Dec. 15-16, 3 pm

**Rotaru International Children's
Ballet • The Nutcracker**

Fri.-Sat., Dec. 21-22, 7:30 pm

Joshua Kane

*You Killed My Christmas Tree:
An All-American Christmas*

Fri., Jan. 4, 7:30 pm

Mark Morris Dance Group

Fri.-Sat., Feb. 1-2, 7:30 pm

**Compañía Española de
Antonio Márquez**

Sat., Feb. 23, 7:30 pm

**Harolyn Blackwell and
Florence Quivar**

Fri., March 1, 7:30 pm

Wayne Shorter Jazz Quartet

Sun., March 3, 3 pm

**St. Paul Chamber Orchestra
& Theatre de la Jeune Lune**

Sat., March 16, 7:30 pm

Twyla Tharp Dance

Sat., April 6, 7:30 pm

Audra McDonald

Sat., May 4, 7:30 pm

**Mariachi Vargas
de Tecalitlán**

Sat., May 18, 7:30 pm

**An Evening with
Dave Brubeck**



RIALTO

CENTER FOR THE
PERFORMING ARTS

GEORGIA STATE UNIVERSITY

404-651-4727

www.rialtocenter.org



The Atlanta
Journal-
Constitution
ajc.com



Free parking is provided for all Signature Series performances