



JEFFERSON MAYS
24"
14" ear to ear
16" center back

black
high gloss
helmet hair

Care:
Roll with large hot rollers
occasionally. Reset Barrett
when necessary

P I A N A V R E E L A N D



Kelly
22 1/2 head
11" ear to ear
14" CB

white/straw colour
damaged
black/dark roots
especially @ back

Care
None.



A N D Y W A R H O L

ELLEN LAUREN

22"

12" ear to ear

14" center back

silver blonde
dark streaks



Care
Lightly tease top
for a little lift
Large ^{hot} rollers hand
held for a minute,
will put some bend
in the hair

E D I E S E D G W I C K



K.J. SANCHEZ

21 1/4"

12" ear to ear

14" center back

burgundy/brown

brunette —

wash of purple —

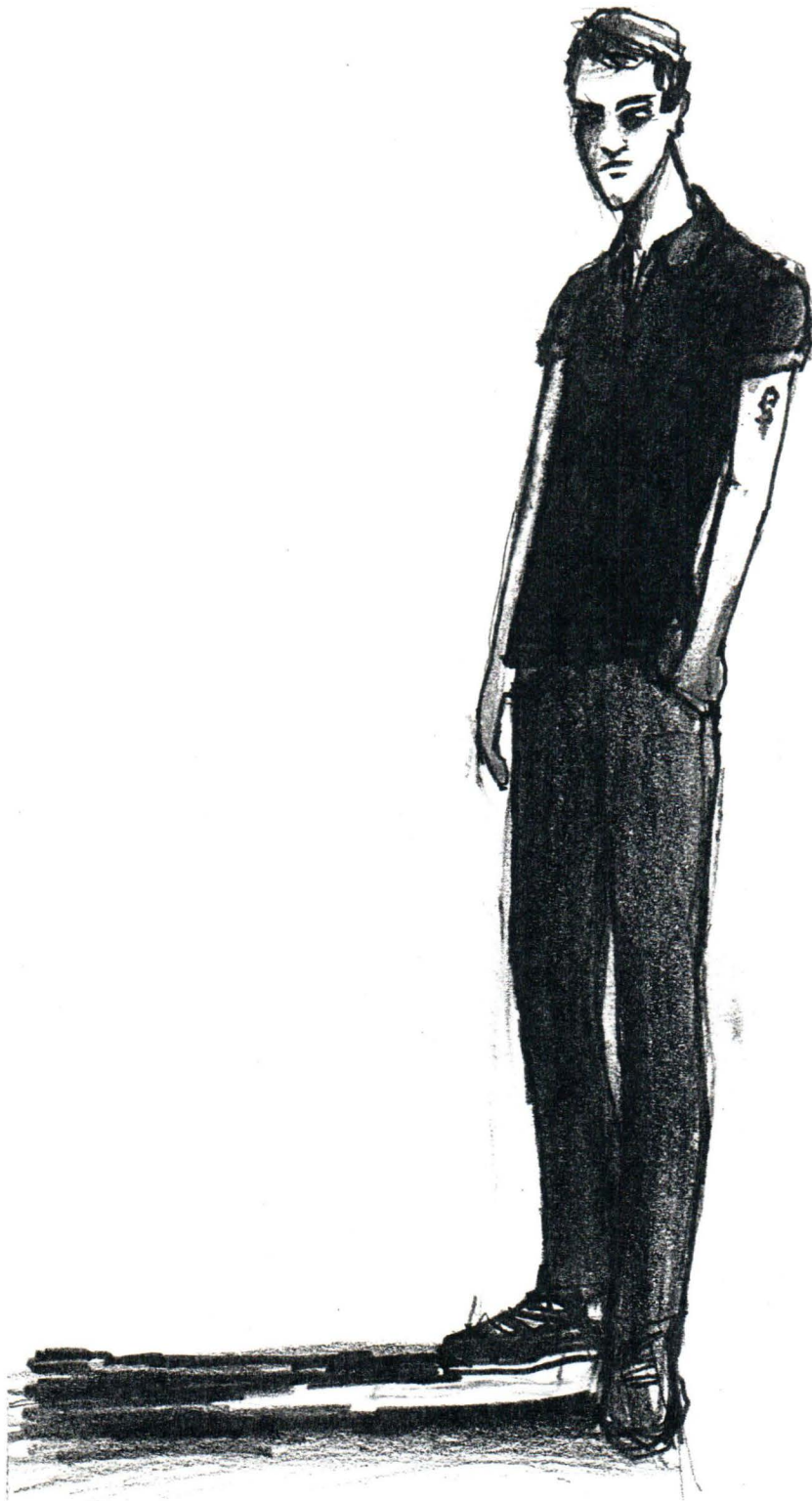
curls out of control

not quite afro-like

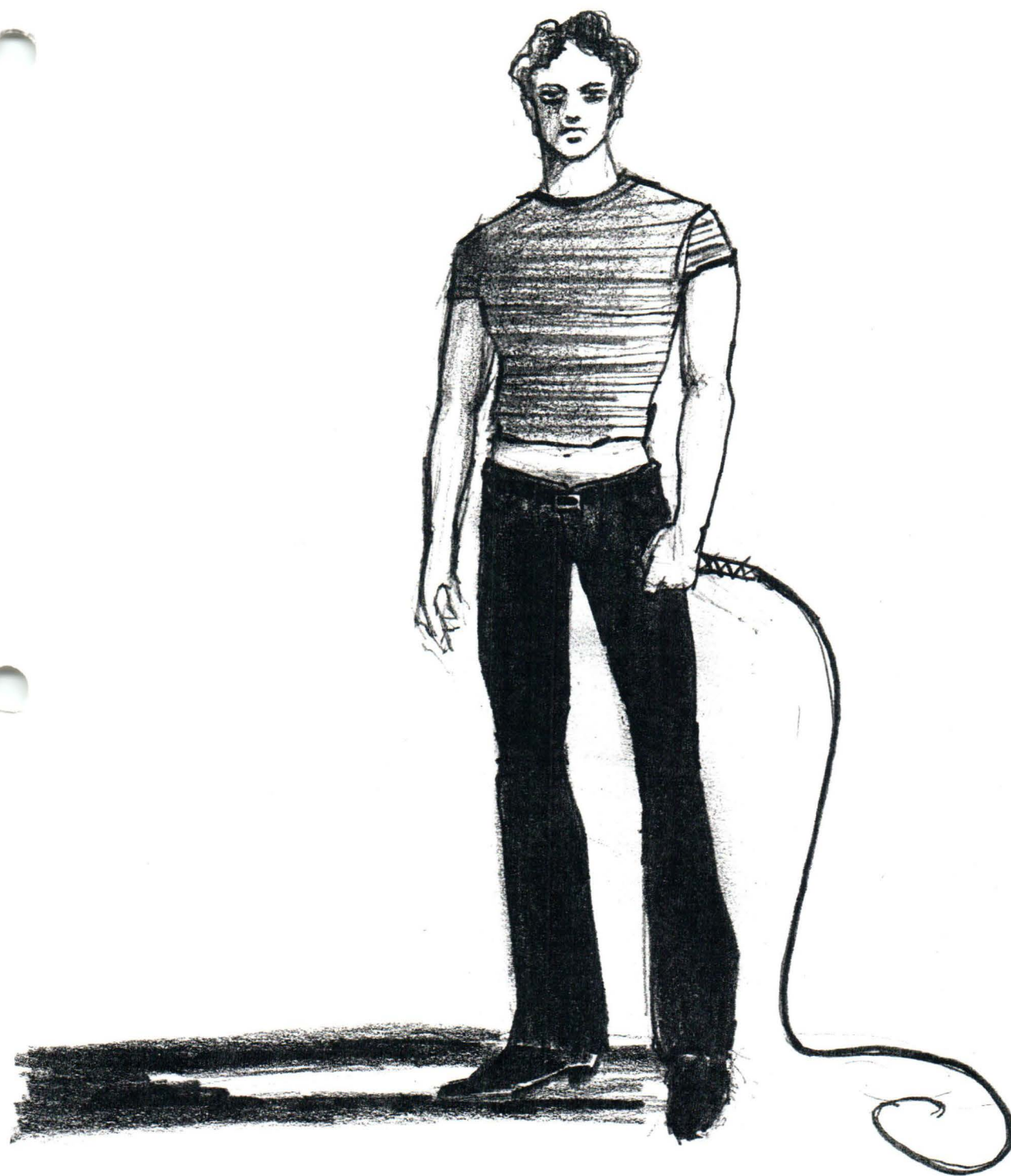
Care

Curl occasionally with
small hot rollers (no curling
irons). Mist with water and
scrunch when there is hair
spray to work with in the
wig

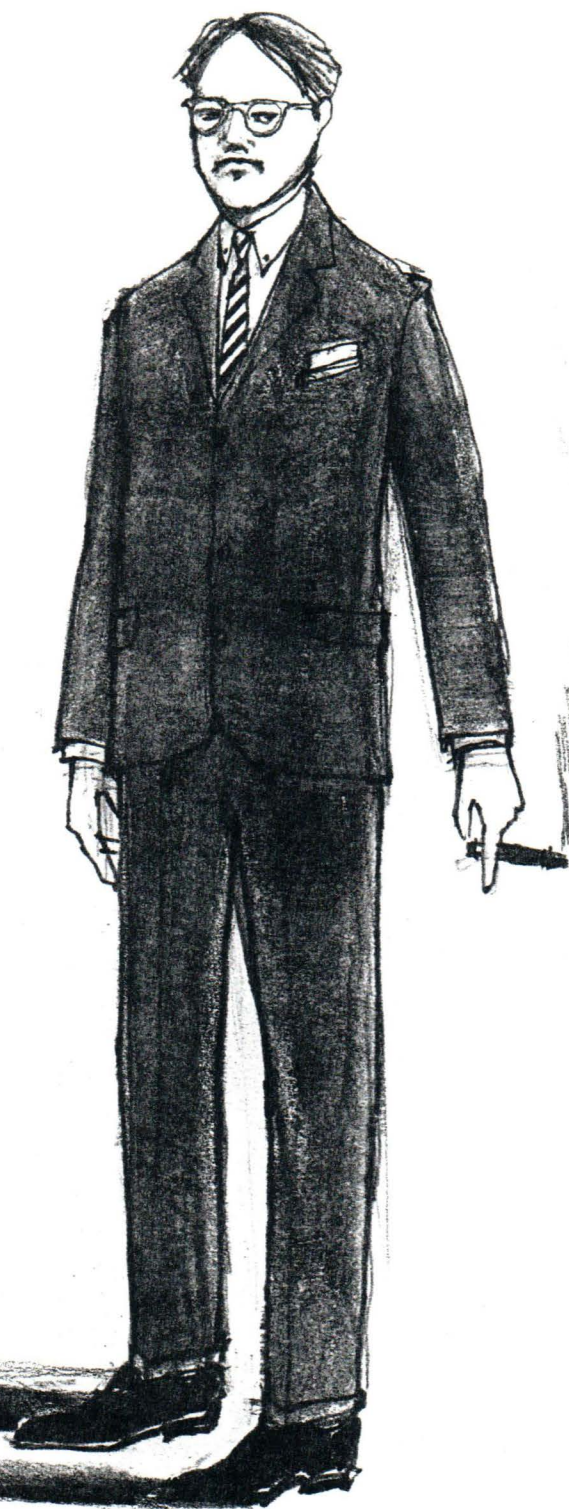
U L T R A V I O L E T



B I L L Y N A M E



G E R A R D M A L A N G A



H E N R Y G E L D Z A H L E