

30th Next Wave Festival

NOV 2012

BAMbill



Rosemarie Trockel, *Language Change*, 2012

BAM 30th Next Wave Festival sponsor

Published by:

<THE L MAGAZINE>



BAMBILL, BY «THE L MAGAZINE»

45 MAIN STREET, SUITE 806, BROOKLYN, NY 11201 718-596-3462 WWW.THELMAGAZINE.COM

EDITORIAL

EDITOR-IN-CHIEF Jonny Diamond
EXECUTIVE EDITOR Mike Conklin
CULTURE EDITOR Henry Stewart
ASSOCIATE EDITOR Lauren Beck,
Kristin Iversen
ASSISTANT EDITOR Virginia K. Smith

ART

ART DIRECTOR Crystal Gwyn
CREATIVE DIRECTOR OF PROMOTIONS
Ashley Minette
HEAD DESIGNER Joseph Kaplan

ADVERTISING

VP OF INTEGRATED SALES AND
MARKETING
Jesse Smith
DIRECTOR OF NORTHSIDE BUSINESS
DEVELOPMENT
Dana Keith
SENIOR ACCOUNT EXECUTIVE
Danielle DiPaolo
ACCOUNT EXECUTIVE
Tyler Menzel
MARKETING AND PROMOTIONS
COORDINATOR
Deirdre Hering

EVENT AND SALES COORDINATOR
Sarah Lerner

ADVERTISEMENTS
sales@thelmagazine.com
718-596-3462

THE L MAGAZINE L.L.C.

FOUNDERS N. Scott Stedman,
Daniel Stedman
CEO & PUBLISHER Nick Burry
ASSISTANT TO THE PUBLISHER
Nicole Conner

Park Slope Dermatology & Medi-Spa

General and Cosmetic Dermatology
We Treat all skin Types and Complexions

Fraxel Restore Laser • Botox • Cosmetic Fillers
Chemical Peels • Diamond Tip Microdermabrasion
Laser Hair Removal • Spider Vein Therapy • Acne
Eczema • Dark Spots • Melasma • Rosacea • Psoriasis
Nail Discoloration • Ingrown Hairs • Hair Loss • Moles
Stretch Marks • Scars • Skin Cancer Screening

Brigitte A. Holder, M.D.

456A Ninth Street (Between 7th and 8th Ave.) Brooklyn, NY 11215
718-965-1116 www.parkslopedermatology.com



92Y TALKS & READINGS NOVEMBER HIGHLIGHTS

TALKS

SAT, NOV 10, 8 PM

The Untold History of the US
Oliver Stone, Lewis Lapham and
Peter Kuznick with **Thane Rosenbaum**

THU, NOV 15, 8 PM

Rachael Ray with **Joy Behar**

SUN, NOV 18, 7:30 PM

A Night to Celebrate Woody Guthrie and
"Woody's Children"

Tom Paxton, Tom Chapin, Aztec Two-Step,
Buskin & Batteau, Christine Lavin, Doug
Mishkin & others with **Budd Mishkin**

TUE, NOV 20, 8 PM

Ray Kurzweil: Engineering the Brain
with **Lev Grossman**

MON, NOV 26, 8 PM

Anna Quindlen with **Jodi Kantor**

READINGS

MON, NOV 12, 8 PM

Bonnie Jo Campbell &
Barbara Kingsolver

THU, NOV 15, 8:15 PM

Tracy K. Smith & Dean Young

MON, NOV 19, 8 PM

The Poets' Theatre: **ANTIGONICK**
with **Anne Carson** & actors to be
announced. Directed by **Sam Gold**

For a complete listing and to order, visit **92Y.org** or call **212.415.5500**.
Discounted tickets available for patrons age 35 and Under.

92nd Street Y Lexington Avenue at 92nd Street | An agency of UJA-Federation

BAMbill

Nov 2012

BAM
150 YEARS

Contents

Faust

Iceland's Vesturport Theatre tackles *Faust*,
with musical by Nick Cave/Warren Ellis
by David Belcher

Sō Percussion

Where (we) Live moves this tight ensemble
beyond its comfort zone
by Robert Wood

The Harvey Gets New Seats

A multi-faceted renovation of the magnifi-
cent theater includes new seating
by Carl Gillen

Program

BAM Directory



Photo of Faust, by Eddi

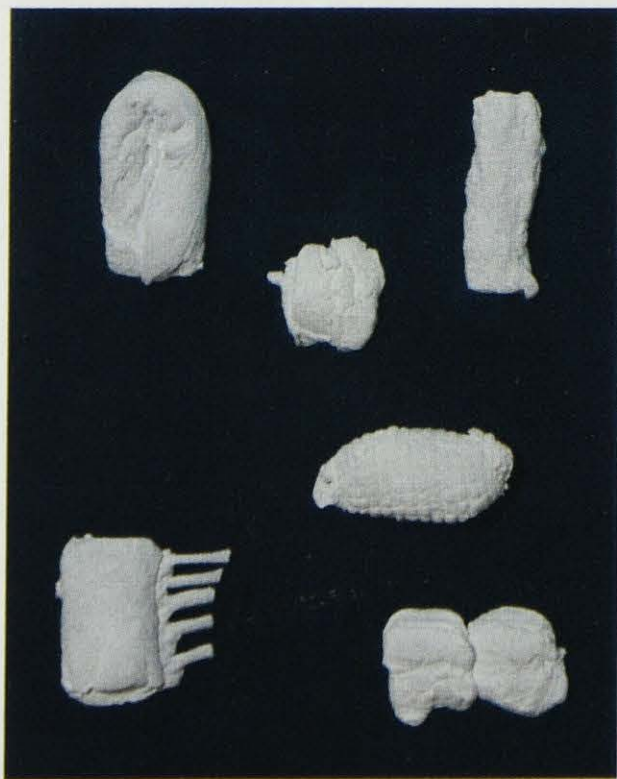


Photo of Sō Percussion

Cover Artist

Rosemarie Trockel, born in Schwerte, Germany, studied painting with Werner Schriefers at the Werkkunstschule in Cologne. In 1983 Trockel joined forces with Monika Sprüth, who then opened her eponymous gallery with the agenda of exhibiting female artists of international standing. In 1985 Trockel produced the first of her "wool paintings," machine-made knitted works carrying logos or patterns which are stretched like conventional paintings. Subsequent work expanded on the concepts of gender-specific tasks and industrialization, tempered with subversive irony. Trockel's first exhibition in the US took place at MoMA in 1988. She represented Germany in the 1999 Venice Biennale. She has been a professor at the Kunstakademie Düsseldorf since 1998. She is represented by Sprüth Magers in Berlin and London and by the Gladstone Gallery in New York and Brussels. *Rosemarie Trockel: A Cosmos* will be on view at the New Museum in New York from Oct 24—Jan 20.

The proceeds from the sale of this work benefit BAM.
To purchase, contact David Harper at 718.636.4101 or
BAMart@BAM.org.



Rosemarie Trockel, *Language Change*, 2012
Synthetic plaster, wood, acrylic. 75x60x9cm.
Courtesy Sprüth Magers Berlin London

Thanks to our Next Wave Festival supporters

BAM 30th Next Wave Festival and
Einstein on the Beach sponsor



Programming in the BAM Howard Gilman Opera House is supported and endowed by The Howard Gilman Foundation. Programming in the BAM Harvey Theater is endowed by the Doris Duke Charitable Foundation.

Major support for *Einstein on the Beach* provided by:



Leadership support for *Einstein on the Beach* provided by The Andrew W. Mellon Foundation, The Robert W. Wilson Charitable Trust.

Additional support provided by Joseph and Sylvia Slifka Foundation and Mercedes T. Bass, with special thanks to the Alfred P. Sloan Foundation

Major support for the *Einstein on the Beach* Member Lounge provided by:



Leadership support for new commissions in the BAM Fisher provided by Steve Tisch, Laurie Tisch, and Lizzie and Jonathan Tisch, in memory of their father, Preston Robert Tisch

Diverse Voices at BAM sponsored by:

TimeWarner

Leadership support for *Political Mother* provided by The Jerome Robbins Foundation, Inc.

Global Connections at BAM sponsored by:

MetLife Foundation

Leadership support for *Faust: A Love Story* provided by The Barbro Osher Pro Suecia Foundation

Major sponsor of *Donka: A Letter to Chekhov*:



Presenting sponsor for HOUSE / DIVIDED:



New and expanded programming and capital initiatives at BAM made possible by major operating, capital and endowment support from the Irene Diamond Fund

Steinberg Screen at the BAM Harvey Theater is made possible by The Joseph S. and Diane H. Steinberg Charitable Trust.

Leadership support for the BAM music and film initiative provided by The Peter Jay Sharp Foundation

Rolex Institute supports emerging artists at BAM

BAM.org sponsor:

R/GA

BAM Marquee sponsor:

Sovereign



The BAM facilities are owned by the City of New York and benefit from public funds provided through the New York City Department of Cultural Affairs with support from Mayor Michael R. Bloomberg; Cultural Affairs Commissioner Kate D. Levin; the New York City Council including Council Speaker Christine C. Quinn, Finance Committee Chair Domenic M. Recchia Jr., Cultural Affairs Committee Chair Jimmy Van Bramer, the Brooklyn Delegation of the Council, and Councilwoman Letitia James; and Brooklyn Borough President Marty Markowitz.

Official airline for BAM 30th Next Wave Festival:



Official hotel for BAM:



Official piano for BAM:



BAM would like to thank the Brooklyn Delegations of the New York State Assembly, Joseph R. Lentol, Delegation Leader; and New York Senate, Senator Velmanette Montgomery, Delegation Leader.

Your tax dollars make BAM programs possible through funding from:



BAM 30th Next Wave Festival Supporters:

Rose M. Badgeley Residuary Charitable Trust
The Educational Foundation of America
The Harkness Foundation for Dance
The Francena T. Harrison Foundation Trust
The Leona M. & Harry B. Helmsley Charitable Trust
The Rita and Alex Hillman Foundation
Leon Levy Foundation
Frederick Loewe Foundation
Mertz Gilmore Foundation
The Ambrose Monell Foundation
Henry and Lucy Moses Fund, Inc.
Samuel I. Newhouse Foundation Inc.
Robert Rauschenberg Foundation
The Morris and Alma Schapiro Fund
The Scherman Foundation
The SHS Foundation
The Shubert Foundation, Inc.
The Harold & Mimi Steinberg Charitable Trust
The Skirball Foundation
The Starr Foundation
Vital Projects Fund
The Winston Foundation, Inc.
BAM Members

Artist Circle
Producers Council
Generation Advance
Friends of BAM
BAM Cinema Club

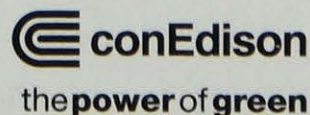
Endowed funds supporting the Next Wave Festival: The Howard Gilman Foundation; Lila Wallace-Reader's Digest Endowment Fund for Community, Educational, and Public Affairs Programs at BAM; The SHS Foundation; The Andrew W. Mellon Foundation Fund for Opera and Music-Theater; The Peter Jay Sharp Fund for Opera and Theater; The Ford Foundation Fund to Support Collaborative Creativity Among U.S. Artists; Estate of Richard B. Fisher; BAM Fund To Support Emerging and Local Musicians; The Starr Foundation; Next Wave Forward Fund; Altria Group, Inc./Founding Sponsor "Supporting the Spirit of Innovation"; and The Devitre Fund.

Title Sponsor of BAM Rose Cinemas and BAMcinématek:

THE WALL STREET JOURNAL.

BAM Rose Cinemas are named in recognition of a major gift in honor of Jonathan F.P. and Diana Calthorpe Rose, and have been generously supported by The Peter Jay Sharp Foundation, and the Estate of Richard B. Fisher.

BAMcafé Live sponsor:



Programming in the BAM Lepercq Space is supported by the Lepercq Foundation.



Welcome!

The BAM Richard B. Fisher Building is officially open. We invite you to take advantage of everything the BAM Fisher has to offer, including Next Wave Festival performances, for which all tickets are \$20; subsidized rehearsal and performance spaces; and an expanded roster of artist talks and education and family programs.

Special thanks to the funders listed below for their leadership support in making the BAM Fisher the cornerstone achievement of BAM's 150th anniversary celebration.

Next Wave
FESTIVAL
BAM

Leadership funding for construction of the BAM Fisher provided by The City of New York; The Borough of Brooklyn; Jeanne Donovan Fisher and the Fisher Family; The SHS Foundation; Judith R. & Alan H. Fishman; The Peter Jay Sharp Foundation; The Rita and Alex Hillman Foundation; Robin & Edgar Lampert; New York State Assembly and New York State Senate.

Endowment support for special programs, spaces, and access provided by the Brooklyn Community Foundation; Martha A. & Robert S. Rubin; Maribelle & Stephen Leavitt; The Geraldine Stutz Trust, Inc.

Leadership funding for mainstage programming and the development of new education and community initiatives in the BAM Fisher provided by The Achelis Foundation; Altman Foundation; Booth Ferris Foundation; Brooklyn Community Foundation; Irene Diamond Fund; Ford Foundation; The Leona M. & Harry B. Helmsley Charitable Trust; Mertz Gilmore Foundation; The New York Community Trust; Robert Rauschenberg Foundation; The Rockefeller Foundation New York City Cultural Innovation Fund; The Skirball Foundation; Laurie M. Tisch Illumination Fund; Lizzie and Jonathan Tisch Foundation; Steve Tisch Foundation.

Chase is the inaugural year sponsor of the BAM Fisher.

The BAM Fisher is named in honor of longtime friend and former BAM Endowment Trust Chairman Richard B. Fisher (1936—2004).

Upcoming Events

30th NEXT WAVE FESTIVAL

ADVENTUROUS ARTISTS. ADVENTUROUS AUDIENCES.

And lose the name of action

Miguel Gutierrez and the Powerful People

Dec 4—8 | BAM Fisher (Fishman Space)

Dec 6: Post-show artist talk, Miguel Gutierrez and the Powerful People, mod. Simon Dove

love fail

Composed and directed by David Lang | Anonymous 4

Dec 6—8 | BAM Harvey Theater

Dec 7: Post-show artist talk with David Lang, mod. John Schaefer

Faust: A Love Story

Inspired by Goethe

Vesturport Theatre and Reykjavik City Theatre

Directed by Gisli Örn Gardarsson

Dec 12—16 | BAM Harvey Theater

Dec 13: Post-show artist talk with Gisli Örn Gardarsson and members of Vesturport Theatre, mod. Jonathan Kalb

Timber

Mantra Percussion

Music by Michael Gordon

Dec 13—15 | BAM Fisher (Fishman Space)

Dec 14: Post-show artist talk, Mantra Percussion, mod. Terrance McKnight

All That Fall

By Samuel Beckett

Pan Pan Theatre Company

Dec 19—23 | BAM Fisher (Fishman Space)

Added shows! Dec 20 at 9:30pm, Dec 22 at 5:30pm, Dec 23 at 1pm

Where (we) Live

Sō Percussion

Directed by Ain Gordon

Dec 19—22 | BAM Harvey Theater

AMERICAN BALLET THEATRE'S

The Nutcracker

Choreography by Alexei Ratmansky

Music by Peter Ilyitch Tchaikovsky

Dec 7—16 | BAM Howard Gilman Opera House

BAMCAFÉ LIVE

FREE MUSIC FRI & SAT NIGHTS. BAR OPENS AT 8PM

Red Hot + Cuba: Aruán Ortiz Camerata Urbana Ensemble

Dec 1 at 10pm

Burnt Sugar the Arkestra Chamber Dec 7 at 9:30pm

Johanna & The Dusty Floor Dec 8 at 9:30pm

Candice Anitra Dec 14 at 9:30pm

The Revelations featuring Tre Williams Dec 15 at 9:30pm

Jorge Sylvester ACE Collective Dec 21 at 9pm

Jen Chapin Band Dec 22 at 9pm

Lee Dec 28 at 9pm

Charanga Soleil Dec 29 at 9pm

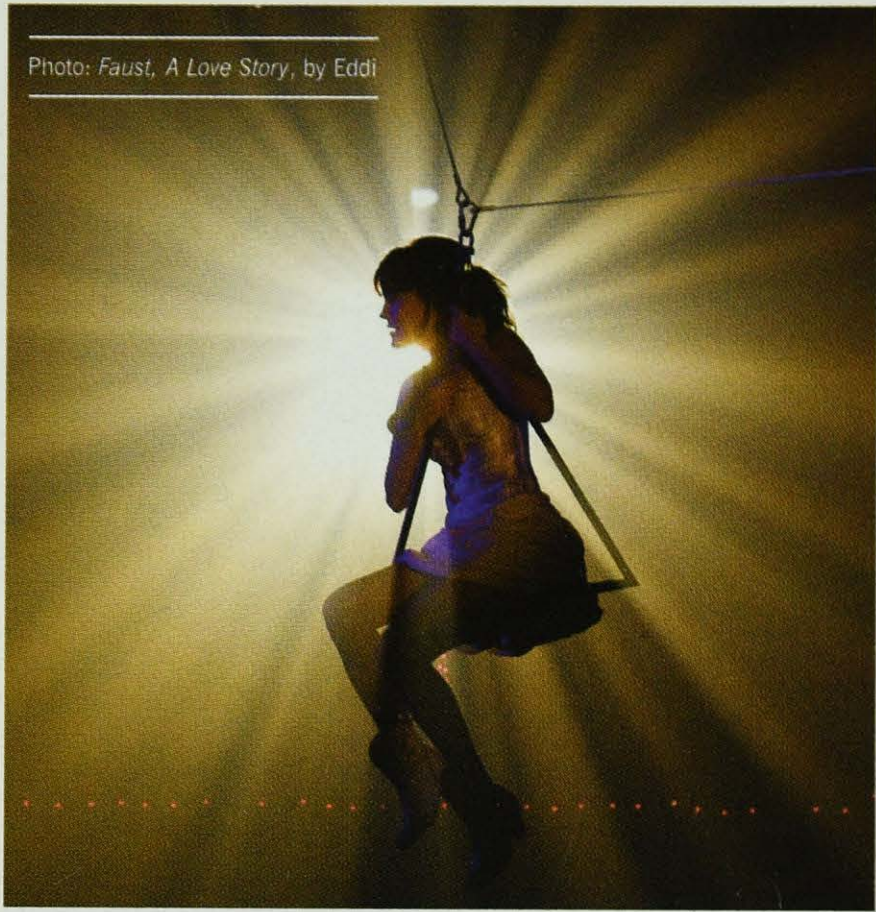


Photo: *Faust, A Love Story*, by Eddi

LITERARY

Brooklyn Literary Mash-Up

Curated and directed by Nelson George

Produced by Alix Lambert, Annabella Sciorra, and Danny Simmons

Dec 10 at 7:30pm | BAM Fisher (Fishman Space)

GET IT OUT THERE

COMEDY BY BAM & IFC

Dec 5 at 9pm | BAMcafé

THE MET: LIVE IN HD

OPERA ON THE BIG SCREEN AT BAM ROSE CINEMAS

Mozart's *La Clemenza di Tito* Dec 1 at 1pm

Pre-screening discussion by Fred Plotkin at 12 noon

Verdi's *Un Ballo in Maschera* Dec 8 at 1pm

Pre-screening discussion by Marc Scorca at 12 noon

Verdi's *Aida* Dec 15 at 1pm

Pre-screening discussion by Marc Scorca at 12 noon

BAMcinématek

REPERTORY, CLASSICS, FESTIVALS, PLUS SPECIAL GUESTS

Max von Sydow Nov 27—Dec 14

Actor Max von Sydow is a staple of both European art house and mainstream multiplex fare, working with such auteurs as Bergman, Allen, Scorsese, and Spielberg, memorably portraying both Jesus Christ and the Exorcist. This retrospective kicks off with von Sydow's soul-bearing, star-making performance in *The Seventh Seal* and features such memorable career highlights as *Pelle the Conqueror*, for which he earned an Oscar nomination.

Home for the Holidays Dec 15—20

BAMcinématek rings in the holiday season with this grab bag of not-so-festive but oh-so-amusing Christmas films, including *Gremlins*, *Silent Night Bloody Night*, *Eyes Wide Shut*, and more.

BAM directory

LOCATIONS

PETER JAY SHARP BUILDING

30 Lafayette Avenue

BAM Howard Gilman Opera House

Lepercq Space/BAMcafé

BAM Rose Cinemas

Hillman Attic Studio

BAM HARVEY THEATER

651 Fulton Street

BAM FISHER

321 Ashland Place

Fishman Space

Hillman Studio

Rooftop Terrace and Stutz Gardens

Leavitt Workshop

Brooklyn, NY 11217

BAM.org | info@BAM.org

TICKETS

BAM Ticket Services (phone)

Performance tickets and info

718.636.4100

BAM.org/tickets | tickets@BAM.org

BAM Box Office (in person)

Peter Jay Sharp Building

Advance sales

Mon–Sat: 12noon–6pm

BAM Harvey Theater box office opens 90 minutes prior to curtain on performance days.

Group Sales

For ticket orders of 20 or more

718.623.7885 | tickets@BAM.org

BAM Rose Cinemas

Advance Ticket Sales:

718.777.FILM (#545)

BAM.org or movietickets.com

Info: 718.636.4100

Box office opens 30 minutes before the first screening of the day.

BAM Rose Cinemas is wheelchair accessible. Infra-red headsets for the hearing impaired are available; inquire at the box office.

Student / Senior Rush Info

718.636.4100 | BAM.org/rush

Call to check ticket availability on the day of the performance.

SERVICES

Membership

718.636.4194

membership@BAM.org

Patron Services

For donors who make an annual contribution of \$1,000 or more:

718.636.4182

patronservices@BAM.org

BAMcafé

Reservations and information

718.623.7811

BAMbus

718.636.4100

Make your reservation up to 24 hours prior to curtain time.

Lost & Found

Mon–Fri: 9am–5pm

718.636.4150

Restrooms

BAM Howard Gilman Opera House: mezzanine and balcony level (handicapped accessible: orchestra level and BAMcafé)

BAM Harvey Theater: lobby and gallery level

BAM Fisher:

lower lobby, 4th floor, and 7th floor

Headphones

BAM offers infra-red listening devices for the hearing impaired; please inquire at the coat check.

OTHER

Administrative Offices

718.636.4111

Rental Information

718.636.4198 | rentals@BAM.org

BAM.org/rentals

BAMart

718.636.4101 | BAM.org/BAMart

Please note

Warning The photographing, videotaping, or sound recording of any performance or the possession of any device for such inside this theater, without written permission of the management, is prohibited by law. Violators may be punished by ejection and may be liable for money damages.

Fire Notice The exit indicated by a red light and sign nearest to the seat you occupy is the shortest route to the street. In the event of fire or other emergency, please WALK TO THAT EXIT, FOLLOWING THE DIRECTIVES OF THE HOUSE STAFF. Thoughtless persons annoy patrons and endanger

the safety of others by lighting matches or smoking in prohibited areas during the performances and intermissions. This violates a New York City ordinance and is punishable by law. —*Fire Commissioner*

BAM backstage employees are represented by the International Alliance of Theatrical Stage Employees (I.A.T.S.E.).



BAM theater managers and press agents are represented by the Association of Theatrical Press Agents

and Managers, Local #18032, IATSE, AFL-CIO.

ATPAM

Food and drinks are not permitted in the BAM Howard Gilman Opera House or BAM Harvey Theater.

BAM is a charter member of the League of Historic American Theaters and an affiliate member of the League of American Theaters and Producers.

Children under five not admitted unless explicitly noted.

BAM 30th Next Wave Festival

Brooklyn Academy of Music

Alan H. Fishman,
Chairman of the Board

William I. Campbell,
Vice Chairman of the Board

Adam E. Max,
Vice Chairman of the Board

Karen Brooks Hopkins,
President

Joseph V. Melillo,
Executive Producer

Trojan Women (After Euripides)

BAM Harvey Theater

Nov 28—30 & Dec 1 at 7:30pm; Dec 2 at 3pm

Approximate running time: one hour 40 minutes, no intermission

Created and performed by SITI Company

Directed by Anne Bogart

Adapted by Jocelyn Clarke

Composed by **Christian Frederickson**

Lighting design by **Brian H Scott**

Design consultant **James Schuette**

Costume design by **Melissa Trn**

BAM 30th Next Wave Festival sponsor



Major support for theater at BAM:
Stephanie & Timothy Ingrassia
Donald R. Mullen Jr.
Harvey Schwartz & Annie Hubbard
The SHS Foundation
The Shubert Foundation, Inc.

Akiko Aizawa, Katherine Crockett, Makela
Spielman. Photo: Craig Schwartz



Troian Women

ENSEMBLE (in order of appearance)

Poseidon	Brent Werzner*
Chorus	Barney O’Hanlon*
Hecuba	Ellen Lauren*
Envoy	Leon Ingulsrud*
Kassandra	Akiko Aizawa*
Andromache	Makela Spielman*
Helen	Katherine Crockett
Menelaus	J. Ed Araiza*
Odysseus	Gian-Murray Gianino*

Original music composed and performed by	Christian Frederickson
Stage manager	Emily Hayes*
Lighting designer	Brian H Scott**
Design consultant	James Schuette**
Costume designer	Melissa Trn
Sound consultant	Darron L West**
Production manager	Megan Caplan
Assistant director	Marina McClure
Associate scenic design (LA)	Sibyl Wickensheimer
Properties coordinator (LA)	Sarah Krainin
SITI Executive director	Megan Wanlass

*Denotes member of Actors Equity Association, the union of professional actors and stage managers in the United States.

**Members of the United Scenic Artists Union (USA).

Anne Bogart is a member of SDC, the Society of Stage Directors and Choreographers, an independent national labor union.

SITI Company’s production of *Trojan Women* was commissioned by the J. Paul Getty Museum and first presented at the Getty Villa in Los Angeles, California, in September 2011.

SITI Company’s *Trojan Women* was inspired by Homer, Euripides, Jean-Paul Sartre, Edith Hamilton, Roberto Calasso, Nikos Efthimopoulos, Caroline Alexander, Aristotle, David LaChapelle, Paul Roche, Robert Fagles, E.V. Rieu, Charles Rowan Beye, Simone Weill, Max Richter, Virgil, Barry S. Strauss, Eleni Karaindrou, and Alberto Manguel.

Katherine Crockett and Ellen
Lauren. Photo: Craig Schwartz



SITI Company



Anne Bogart



Akiko Alzawa



J. Ed Araiza



Katherine Crockett



Gian-Murray Gianino



Leon Ingulsrud



Ellen Lauren



Barney O'Hanlon



Makela Spielman



Brent Werzner

Who's Who

AKIKO AIZAWA (Kassandra) has been a member of SITI Company since 1997, after seven years as a member of the Suzuki Company of Toga. With SITI: *Trojan Women*, *Cafe Variations*, *American Document*, *Antigone*, *Under Construction*, *Who Do You Think You Are*, *Radio Macbeth*, *bobrauschenbergamerica*, *Freshwater*, *Hotel Cassiopeia*, *A Midsummer Night's Dream*, *Intimations for Saxophone*, *La Dispute*, *War of the Worlds*, and *systems/layers*. Roles with SCOT include: *Trojan Women*, *Three Sisters*, and *Dionysus*. Theaters/festivals include BAM, the Public Theater, ART, Arena Stage, ArtsEmerson, Joyce Theater, Krannert Center, Los Angeles Opera, NYTW, New York Live Arts, and Getty Villa. International festivals/venues include: Edinburgh, Dublin, Bonn, Bobigny, Helsinki, Melbourne, Bogota, São Paulo, Tokyo, Toga, and Moscow.

J. ED ARAIZA (Menelaus) has long and varied experiences working on multicultural, cross-disciplinary projects as a writer, director, and performer. SITI Company credits include *Trojan Women*, *Under Construction*, *Hotel Cassiopeia*, *Midsummer Night's Dream*, *systems/layers*, *bobrauschenbergamerica*, *Culture of Desire*, *The Medium*, *Small Lives/Big Dreams*, *War of the Worlds: The Radio Play*, *Who Do You Think You Are*, and *Radio Macbeth*. As a playwright with seven original full-length plays produced, Araiza is also a member of the Dramatist Guild, Austin Script Works, and NoPE, and a former member of El Teatro de la Esperanza and the Los Angeles Theatre Center. Most recently he directed *The Adding Machine* for the UCLA MFA program and *The Seagull* at the University of Windsor, Canada. In December he will direct *Savitri*, *Woman and Myth*, a dance-theater performance based on *The Mahabharata* at the Epic WomenPerformance Conclave at Kartik Fine Arts Center in Chennai, India.

ANNE BOGART (director) has worked with SITI on *Café Variations*; *American Document*; *Antigone*; *Under Construction*; *Freshwater*; *Who Do You Think You Are*; *Radio Macbeth*; *Hotel Cassiopeia*; *Death and the Ploughman*; *La*

Dispute; *Score*; *bobrauschenbergamerica*; *Room*; *War of the Worlds*; *Cabin Pressure*; *War of the Worlds: The Radio Play*; *Alice's Adventures*; *Culture of Desire*; *Bob*; *Going, Going, Gone*; *Small Lives/Big Dreams*; *The Medium*; Noel Coward's *Hay Fever* and *Private Lives*; August Strindberg's *Miss Julie*; and Charles Mee's *Orestes*. She is a professor at Columbia University and the author of the books *A Director Prepares*; *The Viewpoints Book*; *And Then, You Act*; and *Conversations with Anne*.

JOCELYN CLARKE (playwright) is a freelance dramaturg and writer. He is currently theater adviser to the Arts Council of Ireland. He has taught dramaturgy at the John Kennedy Center for the Performing Arts, Columbia University, and Trinity College Dublin. He was the commissioning and literary manager of the Abbey Theatre for four years and the lead theater critic with *The Sunday Tribune* for nine years. He is an associate artist with the Civilians and Theatre Mitu in New York. He has worked as a dramaturg on several productions by the Blue Raincoat Theatre in Sligo, Ireland and has written five adaptations for the company: *Alice in Wonderland*, *Alice Through the Looking Glass*, *The Third Policeman*, *At Swim Two Birds*, and *The Poor Mouth*. He has written six plays for Anne Bogart and SITI Company: *Bob*, *Alice's Adventures Underground*, *Room*, *Score*, *Antigone*, and *Trojan Women (After Euripides)*. He is currently working on new projects for the Archa Theatre in Prague, where he created *Here I Am Human!* with the Tiger Lillies two years ago.

KATHERINE CROCKETT (Helen) is a principal dancer with Martha Graham Dance Company, which she joined in 1993. At the invitation of Vanessa Redgrave, she performed Graham's iconic solo *Lamentation* in Kosovo, and was featured in a BBC interview and performance. She starred as Helen alongside Mikhail Baryshnikov in *The Show—Achilles Heels*, choreographed by Richard Move. Crockett has also been featured in works by Anne Bogart, Robert Wilson, Susan Stroman, Martha Clarke, Lucinda Childs, Larry

Who's Who

Keigwin, and Yvonne Rainer, among others. She was Cate Blanchett's dancer double in *The Curious Case of Benjamin Button*. She has performed in the Gala of the Stars, the Cannes Film Festival, Vogue Fashion Awards, and the runways of Victoria's Secret and Alexander McQueen. Crockett is scheduled to play the lead in *Tiny Dancer*, an upcoming feature film by Jayce Bartok.

CHRISTIAN FREDERICKSON (original music composer and performer) is a violist, composer, and sound designer living in Brooklyn. Recent credits include *The Painted Bird Trilogy* (Wexner Center); *A Midsummer Night's Dream*, *Unnatural Acts*, *Three Sisters* (Classic Stage Company); *The Emperor Jones* (Irish Repertory Theater, 2010 Lortel Nomination); *Through the Yellow Hour* (Rattlestick); *Romeo and Juliet*, *The Edge of Our Bodies* (Actors Theatre of Louisville); and *Trojan Women* (Getty Villa). Frederickson is a founding member of the Louisville-based bands Rachel's and the Young Scamels and is a graduate of the Peabody Conservatory and the Juilliard School.

GIAN-MURRAY GIANINO (Odysseus), as a member of SITl, has helped create and performed in *Café Variations*, *Radio Macbeth*, *bobrauschenbergamerica*, *systems/layers*, and *Freshwater*. New York credits include work at BAM, Second Stage, Signature Theatre, The Public, Women's Project, SoHo Rep, and HERE Arts. He has performed regionally and internationally including at Yale Rep, Arena Stage, Actors Theatre Louisville (Humana Festival), Berkshire Theatre Festival, Getty Villa (LA), The Court (Chicago), Krannert, Walker, Wexner, MC93 Bobigny (France), Bonn Biennale, and Dublin Theatre Festival. TV/film credits include *White Collar*, *Law & Order*, *Law & Order: SVU*, *All My Children*, *Dead Canaries*, and *Hospitality*. He has a BA from Wesleyan University and was an acting apprentice with ATL. Gianino is the third generation of a New York theater family.

EMILY HAYES (stage manager) is thrilled to join SITl Company on this production. New York pro-

ductions include *Hands on a Hardbody* (Broadway), Athol Fugard's *The Train Driver* (Signature Theatre), and *Fourteen Flights* (New York Fringe Festival). International work includes *Continuum: Beyond the Killing Fields* (Theatreworks, Singapore/Brazil Tour) and *Peter Pan* (King's Head Theatre, London). Other credits include *Spring Awakening*, *The Revenger's Tragedy*, and *Joe Turner's Come and Gone* (La Jolla Playhouse/UC San Diego). Hayes received her MFA in stage management from UC San Diego and is a proud member of Actors Equity.

LEON INGULSRUD (Envoy) helped found SITl Company and has appeared in *Orestes*, *Seven Deadly Sins* (New York City Opera), *Nicholas & Alexandra* (LA Opera), *bobrauschenbergamerica*, *Hotel Cassiopeia*, *Who Do You Think You Are*, *Radio Macbeth*, *Under Construction*, *Antigone*, *American Document* (Martha Graham Dance Co.), *War of the Worlds: Radio Play*, *Trojan Women*, *Café Variations*, and *Continuous Replay* (Bill T. Jones/Arnie Zane Dance Co.) Previous to SITl, Ingulsrud was a member of the Suzuki Company of Toga for seven years, during which time he also served as a resident director at the ATM Arts Center in Mito, Japan. He served two years as the associate artistic director of Swine Palace in Baton Rouge, LA. Ingulsrud has taught in workshops and universities around the world, translates Japanese theater texts into English, and holds an MFA in directing from Columbia.

ELLEN LAUREN (Hecuba) is a founding member of SITl Company. SITl credits include: *Café Variations*; *Under Construction*; *Radio Macbeth*; *Who Do You Think You Are*; *Hotel Cassiopeia*; *Death and the Ploughman*; *A Midsummer Night's Dream*; *Room*; *bobrauschenbergamerica*; *Hotel Cassiopeia*; *systems/layers*; *War of the Worlds*; *Cabin Pressure*; *The Medium*; *Culture of Desire*; *Going, Going, Gone*; *Orestes*; and *American Document* with Martha Graham Dance Company. Festivals include: Bonn, Germany; Iberoamericano Bogota; BAM Next Wave; Humana; Bobigny; Melbourne; Edinburgh; Singapore; Wexner, Krannert, and Walker Center for the Arts; New York Live Arts,

Who's Who

New York Theater Workshop, Classic Stage Co., Women's Project, Miller, the Public, and Joyce Theaters. Regional credits include San Jose Rep, ART Cambridge, Court Theatre, Alabama Shakespeare, Actors Theatre of Louisville, Milwaukee Repertory, Alley Theatre, Houston, and Hartford Stage. She appeared in *Seven Deadly Sins* with New York City Opera (Kosovar Award for Anna II) and was associate artist with the Suzuki Company of Toga under the direction of Tadashi Suzuki. Credits include *Dionysus*, *Oedipus*, *Waiting for Romeo*, and *King Lear*. Venues include Moscow Art Theatre, Toga Festival, Alexandrinsky Theatre, RSC, Theatre Olympics Athens, Shizuoka Japan, Buenos Aires Festival, Vienna Festival, Istanbul Festival, Festival Mundial Chile, Teatro Olimpico Italy, Montpelier France, and Hong Kong Festival. She has served on the Juilliard School of Drama faculty since 1995 and received a Fox Fellowship for Distinguished Achievement in 2008.

BARNEY O'HANLON (chorus) is from Cape Cod, MA, and graduated from NYU's Tisch School of the Arts with a BFA (with honors) in drama. SITI Company credits include *Small Lives/Big Dreams*, *Culture of Desire*, *War of the Worlds: Radio Play*, *War of the Worlds*, *Cabin Pressure*, *Short Stories*, *Hayfever*, *A Midsummer Night's Dream*, *bobrauschenbergamerica*, *Radio Macbeth*, *Room* (movement), *Seven Deadly Sins* and *Lilith* (New York City Opera), *Nicholas and Alexandra* (Los Angeles Opera), *Hotel Cassiopeia*, *Under Construction*, *systems/layers* (director/choreographer), *Antigone*, *Trojan Women*, *Freshwater*, *Who Do You Think You Are*, *American Document* (with Martha Graham Dance Co.), and *Café Variations*.

JAMES SCHUETTE (design consultant) has designed over 15 productions for SITI Company. Recent work includes set and/or costume designs for Paula Vogel's *Civil War Christmas* directed by Tina Landau (New York Theatre Workshop), *Carmen* directed by Anne Bogart (Glimmerglass), *Sweet Bird of Youth* directed by David Cromer (Goodman Theatre), *The March* written and directed by Frank Galati (Steppenwolf), and *The Death of Klinghoffer* and *Alice in Wonderland* directed by James Robinson (Opera Theatre of St.

Louis). His work has been seen at the American Repertory Theatre, Actors Theatre of Louisville, American Conservatory Theatre, Arena Stage, Berkeley Rep, Court Theatre, Goodman Theatre, Minneapolis Children's Theatre, Long Wharf, La Jolla Playhouse, Mark Taper Forum, Manhattan Theatre Club, New York Theatre Workshop, Oregon Shakespeare Festival, Playwrights Horizons, the Public Theater, Papermill Playhouse, Seattle Rep, Trinity Rep, Vineyard Theatre, Yale Rep, Boston Lyric Opera, Houston Grand Opera, Seattle Opera, New York City Opera, Santa Fe Opera, and Minnesota Opera. Upcoming projects include *Norma* (Washington National Opera), *Head of Passes* (Steppenwolf), *Champion* (Opera Theatre of St. Louis), and *Dolores Claiborne* (San Francisco Opera).

BRIAN H SCOTT (lighting designer) is a SITI Company member and has designed lighting for *Café Variations* at Emerson College in Boston, *Trojan Women* at the Getty Villa, *American Document* with the Martha Graham Dance Company, *Under Construction*, *Who Do You Think You Are*, *Hotel Cassiopeia*, *Death and the Ploughman*, *bobrauschenbergamerica* (Henry Hewes Design Award 2004), and *War of the Worlds: Radio Play*. He is currently designing lighting for Ann Hamilton's *The Event of a Thread* at Park Avenue Armory. He recently designed lighting for *Death Tax* with Actors Theatre Louisville, *How the World Began* with Women's Project, *Dead Man's Cellphone* with Playwright's Horizon, and *The Importance of Being Earnest* at Arena Stage. As a member of the Austin-based company Rude Mechanicals, he has designed for numerous productions including *Method Gun*, *Now Now Oh Now*, *I've Never Been So Happy*, *How Late It Was How Late*, *Lipstick Traces*, *Requiem for Tesla*, and *Matchplay*.

MAKELA SPIELMAN (Andromache) with SITI Company has performed in *Antigone*, *Under Construction*, *Radio Macbeth*, and *Intimations for Saxophone*. Recent theater includes *The Catch* and *Living Out* (Denver Center), *Doubt* (Cincinnati Playhouse and Actors Theatre of Louisville), *Silence* (Roundtable Ensemble), *Children of a Lesser God* (Keen Theatre

Who's Who

Company), as well as Arena Stage, La Jolla Playhouse, the Shakespeare Theatre, Folger Shakespeare Library, Magic Theatre, and six seasons at the O'Neill Theater Center Playwrights Conference. She earned an MFA at University of California, San Diego.

MELISSA TRN (costume designer) has designed for *Antigone* (SITI Company), *From the Fire* (composed by Elizabeth Swados), *My Sweet Charlie*, *What To Do When You Hate All Your Friends*, *Al's Business Cards*, *Klause Square*, *The Screens*, *Baal*, *The Sporting Life*, *The Erotic Diary...*, and *Spacebar*. Regional theater includes *Trojan Women* (Getty Villa); *Roller Disco* (ART's Oberon); *Richard II* (Yale Rep); *The Me Nobody Knows* (Black Rep, St. Louis); *Cataclysm*, *Con*, and *Wake Up!* (Telluride Theater); and *Grace, or the Art of Climbing* (Nice People, Philadelphia). She was resident artist for Studio 42, New York's producer of "unproducible" plays as well as an associate member for Telluride Theater. She has an MFA from the Yale School of Drama.

MEGAN WANLASS (executive director) has been a member of SITI Company since 1995 and its executive director since 2000. In her tenure with SITI, Wanlass has helped to create over 30 shows. She began working with Anne Bogart during *The Adding Machine* at Actors Theatre of Louisville (1995). She has an arts administration certificate from New York University; attended the executive program for nonprofit leaders at Stanford University Business School; was a member of the Arts Leadership Institute charter class at Teachers College, Columbia University; is participating in the National Arts Strategies Executive Leadership Program; and holds a BA in theater from Occidental College in Los Angeles. Wanlass currently serves on the board of Theatre Communications Group (TCG) and is the chair of the Enrichment Committee at the Pearls Hawthorne School.

BRENT WERZNER (Poseidon) has appeared in *A Midsummer Night's Dream* with SITI and in *Herakles* by Euripides with Aquila Theatre in

Athens. He performed in *Mika*, presented in New York to the United Nations and Secretary General Ban Ki Moon in recognition of the International Day for the Elimination of Violence Against Women. Regional work includes *Trojan Women*, *A Midsummer Night's Dream*, *Americamisfit*, *The Intergalactic Nemesis*, *One Flew Over the Cuckoo's Nest*, *Tracers*, *Static*, *Romeo and Juliet*, *Medea Stories*, *The House*, and *The Intergalactic Nemesis*. TV: *Friday Night Lights* and *A Woman of Independent Means* (miniseries). Film credits include *Fall to Grace*, *Blue Ruin* (upcoming feature), *The Argentum Prophecies* (upcoming feature), and *Backroads* (short). He co-directed *In the Wings*, a documentary on a mixed abilities theater program in Vermont, currently in post-production. Werzner is a graduate of Saint Edward's University in Austin, TX.

DARRON L WEST (sound consultant) has been a SITI Company member since 1993 and first collaborated with Anne Bogart in 1990 while he was resident sound designer at Actors Theatre of Louisville. His work has been heard in over 500 productions nationally and internationally. Accolades include a 2012 Tony Award for *Peter and the Starcatcher*, the 2012 Princess Grace Statuette Award, a 1998 Obie Award for SITI's *BOB*, the Entertainment Design Magazine Eddy Award, the 2004 and 2005 Henry Hewes Design award, and a 2006 Lucille Lortel Award. He directed *Kid Simple* (2004 Humana Festival at Actors Theater of Louisville), *Lilly's Purple Plastic Purse* and *Eurydice* (Children's Theater Co., Minneapolis), and *Big Love* (Rude Mechanicals, Austin, TX). He was co-director of SITI Company's *War of the Worlds: The Radio Play* and *Radio Macbeth*.

SITI Company

SITI Company: Akiko Aizawa, J. Ed Araiza, Anne Bogart, Will Bond, Gian-Murray Gianino, Leon Ingulsrud, Ellen Lauren, Kelly Maurer, Charles L. Mee, Jr., Tom Nelis, Barney O'Hanlon, Neil Patel, James Schuette, Brian H Scott, Megan Wanlass, Stephen Duff Webber, and Darron L West

SITI Company Board of Directors: J. Ed Araiza, Anne Bogart, Gigi Bolt (Chair), Martha Coigney, Barbara Olsen Cummings, Lauren Flanigan, Rena Chelouche Fogel, Gian-Murray Gianino, Jason Hackett, Chris Healy (Treasurer), Kim Ima (Secretary), Kevin Kuhlke, Ellen Lauren, Thomas Mallon, Charles L. Mee, Ruth Nightengale, Leonard Perfido (Vice-Chair), and Jaan Whitehead.

SITI Company Staff & Interns: Megan Wanlass, Executive Director; Michelle Preston, Deputy Director; Vanessa Sparling, General Manager; Tina Mitchell, Artistic Associate; Jeremy Pickard, Space Intern; Megan Hanley and Laura Sheedy, Interns.

SITI Company Consultants: Ellen Pearre Cason, Accountant; Maggie Elliott and James Harley, Graphic Designers; Chris Healy and Thomas Mallon, Attorneys; Al Foote, Web Programmer

Contact Information

520 8th Avenue | 3rd Floor, Suite #310 | New York, NY 10018

Tel: 212.868.0860

Email: inbox@siti.org

Website: siti.org

Facebook: facebook.com/SITICompany

Twitter: twitter.com/siticompany

SITI Extended Ensemble [SEE]: siti.groupsite.com

Exclusive Worldwide Tour Representation

Rena Shagan Associates

16A West 88th Street

New York, NY 10024

212.873.9700 | 212.873.1708 (fax)

shaganarts.com

SITI Company

DONORS

SITI Company is deeply grateful
to the generous donors who are
listed below:

SITI Inner Circle

Kyo Aizawa
Mark Allison & Stephanie
Holmquist
Jeanne Donovan Fisher
Kim Ima
Leonard P. & Ruth S. Perfido
Daniel & Joanne Smith
Wendy vanden Heuvel
George Ralph Wanlass &
Karen Carson
Jaan Whitehead

SITI Circle

Anonymous
J. Ed Araiza
Katie Barthmaier
Anne Bogart
Gigi Bolt
Daniel P. Boylen
Judith Chaffee
Martha Coigney
Lynn & Ron Cohen
William Cook & David Govaker
Julie Crosby
Barbara & Jim Cummings
Scott Cummings
Bonnie Eckard
David Edson
Rena Chelouche Fogel
Erik & Marnie Frederickson
Gioacchino & Lucy Gianino
Christopher Todd Griffin
Kieran J. and Mandy M. Hackett
Anne Hamburger & Ralph Jenney
John Hart
Christopher Healy & Amy L. Sevick
Thomas Allen Hewitt
Robert Joondeph
Fran Kumin
Ellen Lauren
Wanda Lucibello
Thomas Mallon
Mitchell McElya
Charles Mee Jr. and Michi Barall
Brian Mertes & Melissa Kievman
Roberta Nazare & Bechara Ventura
Jennifer & Rick Nelson
Carol Ockman
Barney O'Hanlon
Alice & Richard Prine
Michael Ross

Owen William Schaub & Donna
McCleerey
David G. Stern
Catharine Stimpson
Sofia Sequenzia & John Shostrom
Susan Wallack Goldstein
Micki Wesson

Friends of SITI

Arnold Aronson
June Ballinger
Michael Bettencourt
Ona Blekys
Angela & Brooks Chamberlin
Linda Chapman
Paul Christensen
Roger R. Dowdeswell
Allison Dubin & James C. Tracy
Jill Du Boff
Dina Emerson
Lauren Flanigan
Helen & Duncan Foley
Richard Foreman
Jeffrey Frace
David Gammons
Polly Garcia
Antonia Gianino-Hoekstra
Linda Hammond
Megan Hanley
Jeffrey J. Hill
Richard & Lauren Hess
Carol Huston
Thomas Juarez
Kevin Kuhlke
Robin Levenson Lee
Lethia P. Nall & Simon M. Furnish
Kara Manning
Tina Mitchell
Tchera Nyego
Adale O'Brien
Matt Opatrny
Denise Pelletier
Roberta Pereira
Marcellus Pitz
Hilary Poole
Joanne Pottlitzer
Joan Reutershan
Nancy Reynolds
David Roberts
Yaakov Saturen and Ann Holinger
Holly Sidford and John H. Englund
Molly Smith & Suzanne Blue Star
Boy
Makela Spielman
Elizabeth Stanton
Sherry Teitelbaum
Rose Anne & Peter Thom
Aimee Tsao

Kathleen Turco Lyon
Mark Valdez
Deborah Marion Wallace
Jackie Walker
Lorna Wanlass
Lisa Wylam
Benjamin Yalom
Stephanie Ybarra
Carol Yorke
Paul Zimet

To become a contributor to SITI
Company, call the office at 212-
868-0860 or visit siti.org. All
donations listed in this program
include gifts and pledges re-
ceived through September 2012.

Foundation, Government, and Corporate Support

Patrons: \$50,000+

Bloomberg Philanthropies
The Andrew W. Mellon Founda-
tion, New York Theater Program,
administered by the New York
Foundation for the Arts
New England Foundation for the
Arts
Leading for the Future: Innovative
Support for Artistic Excellence,
an arts initiative created by
Nonprofit Finance Fund (NFF)
and funded by the Doris Duke
Charitable Foundation
The Taproot Foundation

Benefactors: \$10,000 – \$49,999

The Fan Fox & Leslie R. Samuels
Foundation
Public Funds from New York City
Department of Cultural Affairs
The National Endowment for the Arts
The New York State Council on
the Arts
The Shubert Foundation
The Trust for Mutual Understanding

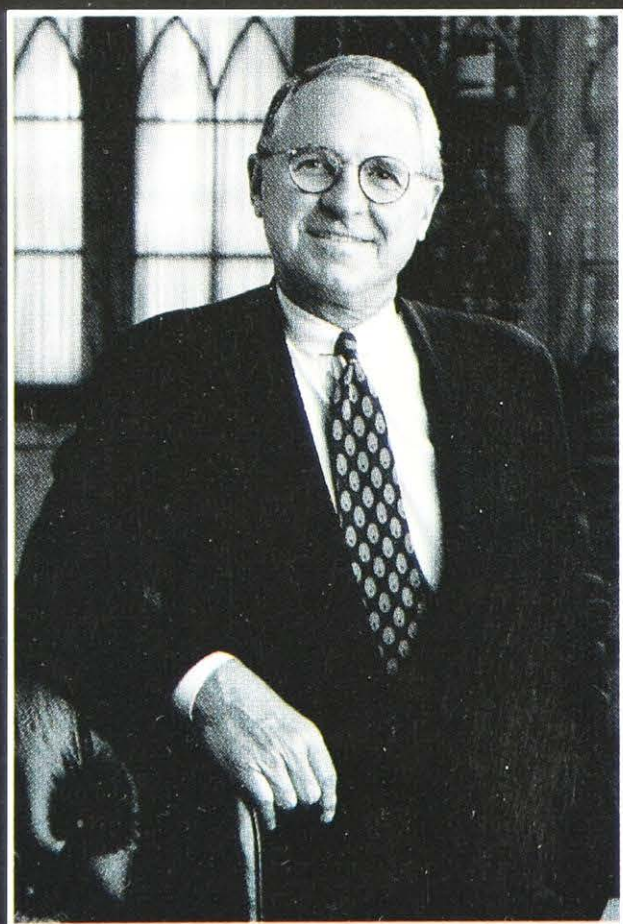
Sponsors: \$250 – \$9,999

Actors' Equity Foundation, Inc.
The Fox Foundation Resident Actor
Fellowship administered by
Theatre Communications Groups
The JKW Foundation
The Lucille Lortel Foundation, Inc.
Pfizer Foundation Matching Gifts
Program
The Tony Randall Theatrical Fund

The Richard B.

Fisher

Next Wave Award



Behind every great arts presenter there are great supporters, and few of BAM's friends have exemplified that better than Richard B. Fisher (1936—2004). A rare visionary in both professional and philanthropic endeavors, Dick Fisher understood and championed the creation of a strong endowment which enabled BAM to continue presenting its signature groundbreaking programming, even in difficult times. As Chairman of the BAM Endowment Trust from 1992—2004, Dick shared financial expertise from years as president, chairman, and chairman emeritus of Morgan Stanley, and he guided investments as the pledges reached \$50 million. BAM's newest facility, the BAM Richard B. Fisher Building, is named in lasting tribute to this great BAM supporter.

Dick Fisher's generosity throughout his life continued, even with his passing, in the form of a landmark bequest. To honor Dick's friendship to BAM and recognize the legacy of progressive arts presentations he helped ensure in Brooklyn, BAM is proudly presenting an annual Richard B. Fisher Next Wave Award. Each year, members of the Fisher family work with BAM to select the artist or company that best exemplifies Dick's forward-thinking ethos and passion for the arts, using this opportunity to celebrate Richard B. Fisher in perpetuity. Past recipients have included Pina Bausch, Charles Mee, Bill T. Jones, Robert Wilson, Mark Morris, and Kronos Quartet.

The 2012 Richard B. Fisher Next Wave Award honors Anne Bogart and the SIT! Company production of *Trojan Women (After Euripides)*.

Since its founding by directors Anne Bogart and Tadashio Suzuki in 1992, SITl Company has redefined contemporary theater in the United States through an innovative approach to collaboration, cultural exchange, and actor training. An ensemble theater based in New York that tours extensively throughout the United States and internationally, SITl serves as a creative home for a core group of artists: ten actors, four designers, Bogart, and an extraordinary list of collaborators. Working together, SITl has not only reimaged what is possible both on and off the stage, but, more broadly, what it means to be a global artist in the new millennium.

SITl is dedicated to the creation of new work, the training of young theater artists, and to international collaboration. Through the company's performances, educational programs and collaborations with other artists and thinkers, SITl continues to challenge the status quo, to train to achieve artistic excellence in every aspect of its work, and to offer new ways of seeing and of being as both artists and as global citizens.

SITl Company made its Next Wave Festival debut in the 2000 Next Wave Festival with its production of *War of the Worlds*, directed by Anne Bogart. The company returned to the Festival with *bobrauschenbergamerica* (in 2003), and *Hotel Cassiopeia* (in 2007)—both directed by Anne Bogart.

In order to pay tribute to Dick Fisher, who was afflicted with childhood polio and subsequently required the assistance of canes throughout his lifetime, the Fisher Award is a beautifully designed walking stick commissioned by Brooklyn visual artist Chris Gullian, who drew his inspiration from Dick's interests and the architecture of BAM's Peter Jay Sharp Building.

The Fisher Next Wave Award presentation will take place on Wednesday, November 28 on the stage of the BAM Harvey Theater prior to the opening night performance of *Trojan Women* (*After Euripides*). BAM President Karen Brooks Hopkins will present the Fisher Award to Anne Bogart.

And be sure to visit BAM's newest facility, the BAM Richard B. Fisher Building, located at 321 Ashland Place around the corner from BAM's flagship Peter Jay Sharp Building. The BAM Fisher is an intimate and versatile venue for emerging performers in dance, theater, and music, as well as the new home for BAM's education and community programs. Highlights of the expanded programming include the launch of the BAM Professional Development Program, an initiative designed to help Brooklyn artists increase institutional capacity, and new and expanded education programs, expected to result in a 50% increase in the total number of students served.



BAM salutes

Members of the Artist Circle

for their generosity and commitment to providing
a home for adventurous artists, audiences, and ideas

Artist Circle Members

Alisa F. Levin &
Charles M. Nathan,
Artist Circle Chairs

Linda & Max Addison
Roger Alcala & Helen Bodian
Jody & John Arnhold
The Bermanzohn/Roseman
Family Fund
Emma Bloomberg &
Christopher Frissora
Mr. & Mrs. Anthony Bowe
Mr. & Mrs. Purnendu Chatterjee
Simon & Sarah Collier
Mary Sharp Cronson
Ide & David Dangoor
Carol & Roger Einiger
Faith E. Gay & Francesca Zambello
David & Susie Gilbert
John N. & Gillett A. Gilbert
Ms. Françoise Girard &
Dr. David G. Knott
Beth & Gary Allen Glynn
Pamela Grace

The Grodzins Fund
Mr. & Mrs. Henry B. Gutman
Mr. & Mrs. Burton K. Haimes
Dozier Hasty & Nancy Havens-Hasty
Cheryl Henson & Ed Finn
Sophie Hughes
Alan Jones & Ashley Garrett
Howard & Janet Kagan
Miriam Katowitz & Arthur Radin
Gene & Terry Kaufman
The Levine Foundation
Briehan Lynch & Alexander Evis
Grace Lyu-Volckhausen
Mattis Family Foundation
Mr. & Mrs. Hamish Maxwell
Scott C. McDonald
William Patrick McMullan &
Rachel McPherson
Constance & H. Roemer McPhee
Joyce F. Menschel
Barbara & Richard Moore
Alexandra Munroe &
Robert Rosenkranz
Stephen Nelson
The O'Grady Foundation

Maya Polsky
Tony Randall Theatrical Fund
William D. & Susan Kahan Rifkin
Sarah & Spencer Robertson
Andrew & Barbra Rothschild
Bette & Richard Saltzman
Paul T. & Joanne W. Schnell
Donna & Marvin Schwartz
Mr. & Mrs. Richard J. Schwartz
Jon & NoraLee Sedmak
Susan & Larry Sills
Mr. & Mrs. Howard Solomon
Sam & Ellen Sporn
David & Aliana Spungen
Starry Night Fund
Dr. Axel Stawski
Jon Stryker & Slobodan Randjelovic
Jane Timken
Sonia Tower
Robert L. Turner
Lori Uddenberg
Wendy vanden Heuvel
Carol Yorke & Gerard Conn
Ann Ziff
Anonymous (3)

Artist Members

Edward Albee
Olivier Assayas
Donald Baechler
Bob Balaban
Matthew Barney
Mikhail Baryshnikov
Mario Batali
Anne Bogart
Matthew Bourne
Iman &
David Bowie
Peter Brook
Trisha Brown &
Burt Barr
Michael Cerveris

Ping Chong
William Christie
Patricia Clarkson
Dr. Chuck Davis
Anne Teresa
De Keersmaecker
Arnaud Desplechin
Declan Donnellan
Garth Fagan
Milos Forman
William Forsythe
Philip Glass
Elliott Gould
Timothy Greenfield-
Sanders

Buck Henry
Isabelle Huppert
Jeremy Irons &
Sinéad Cusack
Bill Irwin
Sir Derek Jacobi
John Jasperse
Bill T. Jones
Harvey Keitel &
Daphna Kastner
Guillermo Kuitca
Louise Lawler
Ralph Lemon
Jonathan Lethem
Susan Marshall

Albert Maysles
Stephin Merritt
Meredith Monk
Mark Morris
Shirin Neshat
Wunmi Olaiya
Nicholas Ormerod
Estelle Parsons
Jack Pierson
Nicolas Refn
Steve Reich
Alan Rickman
Isabella Rossellini
David Salle
Susan Sarandon

Barbet Schroeder
Cindy Sherman
Laurie Simmons
Mark Stewart
Lily Tomlin
Maria Tucci
John Turturro &
Katherine Borowitz
Liv Ullmann
Ivo van Hove
Suzanne Vega
William Wegman
Robert Wilson

The BAM Artist Circle provides essential support for mainstage, visual and cinema arts, education, and community programs. Members participate in an ongoing dialogue regarding BAM's future and have opportunities to attend intimate gatherings with artists—both emerging and iconic—in private settings.

To join the Artist Circle contact Gwendolyn Dunaif at 718.623.7810 x3 or gdunaif@BAM.org.

BAM Board

Brooklyn Academy of Music

Chairman of the Board
Alan H. Fishman

Vice Chairmen of the Board
William I. Campbell
Adam E. Max

President
Karen Brooks Hopkins

Secretary
Joseph V. Melillo

Treasurer
James I. McLaren

President Emeritus
Harvey Lichtenstein

Members
Jeffrey H. Barker
Tony Bechara
René Böttcher
Linda Chinn
Henry Christensen III
Pamela A. Codispoti
Cheryl Della Rosa
Dinyar S. Devitre
Beth Rudin DeWoody

Mark Diker
Andre Dua
Brendan J. Dugan
Thérèse Esperdy
Teri Everett
Mallory Factor
Ronald E. Feiner, Esq.
Richard E. Feldman, Esq.
Steven G. Felsner
Jeanne Donovan Fisher
Barry M. Fox
MaryAnne Gilmartin
Robert M. Greenberg
G. Penn Holsenbeck
Derek Jenkins
Mary Kantor
Daniel A. Klores
Edgar A. Lampert
François Letaconnoux
Gary Lynch
Martin F. Mertz
Ahrin Mishan
Donald R. Mullen Jr.
William A. Perlmut
Dr. William L. Pollard
David L. Ramsay, M.D., M.Ed.
Frances A. Resheske
Jonathan F.P. Rose
Anna Kuzmik Sampas
Alberto Sanchez
Amy W. Schulman

Timothy Sebulnya
Adi Shamir
Danny Simmons
Jessica Smith
Brian Stafford
Joseph A. Stern
Pedro Torres Ciliberto
Jakob Trollbäck
John L. Usdan
Brigitte Vosse
Nora Ann Wallace
Elaine Weinstein
Hon. Franklin R. Weissberg
Vaughn C. Williams, Esq.
Adam Wolfensohn
Claire Wood
Andrew Zolli

Ex Officio
Hon. Michael R. Bloomberg
Hon. Christine C. Quinn
Hon. Marty Markowitz
Hon. Kate D. Levin
Felice Forer Axelrod
Lela Goren
Jamie Snow Markowitz

Chairmen Emeriti
Neil D. Chrisman
Seth S. Faison
Bruce C. Ratner

Honorary Trustees
Robert L. Forbes
Charles J. Hamm
Barbara B. Haws, C.A.
William Josephson
John Lipsky
Laurie Mallet
Cathy-Ann Martine

BAM Endowment Trust Chair
Timothy J. Ingrassia

Vice Chair
Norman L. Peck

Treasurer
Keith Stubblefield

Members
William A. Douglass III
Thérèse Esperdy
Elizabeth Holtzman
James I. McLaren
Gabriel Pizzi
Alberto Sanchez
Timothy Sebulnya
R. Edward Spilka
Nora Ann Wallace
Henry Christensen III, Ex Officio
Alan H. Fishman, Ex Officio

BAMstaff

Karen Brooks Hopkins
President
Joseph V. Melillo
Executive Producer
Alice Bernstein
Executive Vice President
Matthew Bregman
Vice President for Development
Stephanie S. Hughley
Vice President of Education & Humanities
Soo Pak
Vice President of Marketing & Communications
Keith Stubblefield
Chief Financial Officer and Vice President of Finance & Administration

President's Office
Alexandra Siladi
Project Coordinator
Grace Eubank
Administrative Assistant

BAM Rose Cinemas
Efi Shahar
Cinema Executive Manager
Michael Katz, Michael Lefanto
Projectionists
Andreea Drogeanu, Adam Goldberg,
Davina Roberts
Head Floor Staff

BAMcinématek
Florence Almozini
BAMcinématek Program Director
Ann Yershov
BAMcinématek Project Producer
Troy Dandro
BAMcinématek Marketing Manager
Gabriele Caroti
BAMcinématek Publicity Manager
David Reilly, Nellie Killian
Assistant Film Curators
Andrew Chan
Marketing Assistant, Film
Lisa Thomas
Publicity Assistant
David McCullouch
BAMcinématek Assistant

Artistic Programming
Stonie Darling
Department Manager
Ross Marshall
Manager of Artistic Planning

Programs & Curatorial
Nick Schwartz-Hall
Project Line Producer
Amy Cassello
Associate Producer, Next Wave Festival
Darrell M. McNeill
Associate Producer, Music
R. Michael Blanco
DanceMotion USASM, Project Director
Tanya Calamoneri
DanceMotion USASM, Project Manager
Sophia Shackleton
DanceMotion USASM, Project Coordinator
Danny Kapilian
Producer, Rhythm & Blues Festival, MetroTech
Steven Serafin
Special Consultant & Editor,
BAM: The Complete Works
Jena Hershkwitz
Intern

Archives
Sharon Lehner
Director, Archives
Louie Fleck
Archives Coordinator
Ryan Evans, Joseph Bradshaw
Processing Archivists
Anita Goss
Volunteer Librarian
Leanora Lange, Evelyn Shunaman
Interns
Robert Walport
Volunteer

General Management
Patrick J. Scully
General Manager
Sarah Bierenbaum
Assistant General Manager
Kevin Condardo
GM Budget Manager
Jaclyn Bouton, Sara Danielsen
Event Supervisors
Faiz Osman
Project Coordinator
Granville Mullings
GM Coordinator, Budgets & Contracts
Morgan Green
Administrative Assistant
Edmundo Quinones
Intern

Production
Neil Kutner
Director of Production

Don Coleman, Josh Escajeda
Associate Production Managers
Paul Bartlett, Johanna Cohan, Jennifer Grutza, Audrey Hoo, Dylan Nachand
Production Supervisors
Ryan Gastelum, Danielle Colburn,
Michele Byrd-McPhee
Production Coordinators
Yeji Cha
Administrative Coordinator

Stage Crew
Thomas Paulucci
Crew Chief
Cyrus Similly
Head Carpenter, OH
Timothy Fuller
Flyman, OH
James D'Adamo
Head Electrician, OH
Amy Domjan
Assistant Electrician, OH
Bill Horton Jr.
Master of Properties, OH
Marc Putz
Sound Engineer, OH
James Kehoe
Head Carpenter, HT
John Manderbach
Head Electrician, HT
Edward Donohue
Master of Properties, HT
Alison Dabdoub
Sound Engineer, HT
Joe Werner
Assistant Carpenter, HT
Oscar Gruchalski
Utility Man
Richard Wurzbach
Utility Man
Mary Lou Houston
Wardrobe Supervisor

Artist Services
Mary Reilly
Director of Artist Services
Rachel Katwan
Artist Services Manager
Stacey Dinner, Liana Lewis,
Najee Ritter
Artist Services Representatives

Theater Management
Christine M. Gruder
Theater Manager
John L. Jones
Associate Theater Manager

Sonia Clayton, Jacqueline David,
Leroy Houston
Theater Staff Supervisors
Spider Duncan Christopher
BAMbus Manager

Building Operations
Cameron Christensen
Director of Building Operations
Samuel Velez
Security Manager
Wilbur Alvanza
Building Manager
Chad Robison
Associate Building Manager
Markee Glover
Building Services Assistant
Ron London
Assistant Mailroom Clerk
Alysha Wright
Building Operations Coordinator

HVAC & Repair Services
Anthony Shields
HVAC Supervisor
Carl Blango, Calvin Brackett, Amon Greene, Ronald Hunter
HVAC Maintainers

Security
Melvin Patterson, Manuel Taveras
Supervising Attendant Guards
Kenneth Aguillera, Collie Dean
Senior Attendant Guards
Marlon Desouza, Felix Jusino, Kevin Lemon, Teonia Smith, Andel Thomas,
Michael Whyte
Attendant Guards

Custodial Services
Ramon Cabassa
Custodial Supervisor
Allan Boyce, Johanna Brown,
Ludlow Chamberlain, Brezhnev Mesa,
Ron Rathan, Akeon Thomas
Custodians

Development
Individual Giving
William Lynch
Director of Leadership Gifts
Barbara Cummings
Director of Development
Glenn Alan Stiskal
Director of Major Gifts
Gwendolyn Dunaif
Major Gifts Manager

BAMstaff

Richard Serrano
Research Manager
Rachel Weiss
Individual Giving Manager
David Harper
BAM Visual Art Curator
Ben Lasser
Major Gifts Coordinator
Elizabeth Sarkady
Administrative Coordinator
Travis Calvert
Major Gifts Assistant
Lily Arbisser
Intern

Membership
Katherine King
Director of Membership
Sarah Mischner
Membership Coordinator
Bruce Smolanoff
Telefund Manager
Cheryl-Lyn Miller
Membership Assistant
Deborah Linehan
Administrative Assistant
Danielle Davenport, Jennifer
Douglas, Katie Fleming, Samantha
Inniss, David Goldstein, Jessica
Hackett, Caitlin Harrity, Paige Hexton,
Kimberly Howard, Andrew Huber,
Michael Hurst, Melissa Krzywicki,
Stephanie Lane, Jacklyn Lawrence,
Katie Martin, Emilie McDonald,
Thaddeus Murphy, Christie Neptune,
Charlotte Pines, Jenna Purcell,
Adrienne Reynolds, Naomi Schegloff,
Joshua Smilovitz, Annie Steingold,
Amanda Wilder
Membership Representatives

Grants
Kirsten Munro
Director of Grants
Bethany Basile
Grants Writers
Lydia Brunner, Mimi Meserve
Grants Coordinators
Kaitlyn McKeon
Grants Intern

Corporate Relations
Chantal Bernard
Director of Corporate Relations
Ashley Jacobson
Corporate Relations Manager
Rebecca Carew
Corporate Relations Intern

Patron Services
Angela Romualdez
Director of Patron Services
Ramzi Awn
Patron Services Manager
Michael Kendrick
Patron Services Coordinator
Jessica Hindle, Abby Reiss
Patron Services Assistants

Special Events
Margaret Breed
Director of Special Events
Jessica Foreman, James Vause
Special Events Coordinators
Paloma Wake
Special Events Assistant

Endowment & Planned Giving
Denis Azaro
Endowment & Planned
Giving Director
Alexandra Biss
Board Relations Coordinator

Education & Humanities
Education
Suzanne Youngerman
Director, Education & Family
Programs
John P. Tighe
Assistant Director
John S. Foster
Education Manager

Jennifer Leeson
Administrative Coordinator
Gwendolyn Kelso
Program Manager
Nathan Gelgud
Box Office Manager/Program
Associate
Rebecca Dragonetti, Lesley Hunter
Administrative Assistants
Rebekah Gordon
Education Intern

Humanities
Violaine Huisman
Director of Humanities
Molly Silberberg
Humanities Assistant
Hannah Max
Humanities Intern

LEAD INSTRUCTORS
Joshua Cabat
Young Film Critics
Michael LoMonico
Shakespeare Teaches Teachers
Nicole Kempeskie
Young Critics
Jenny Rocha
Dancing into the Future
Pat Hall
BAM/Restoration DanceAfrica
Coordinator
Cey Adams, Samara Gaev
Arts & Justice Program

TEACHING ARTISTS
Sékou Aláji, Harold Akyeampong,
Jennifer Armas, Joe Barnes, Mo Beasley,
Melissa Brown, Mahogany Browne,
Chia-Ti Chiu, Emily Davis, Danielle
Durchslag, Harris Eisenstadt, Imani
Faye, Kimani Fowlin, Samara Gaev,
Glenn Gordon Nsangou, Ingrid Gordon,
Lauren Keating, Shaun Kelly, Nicole
Kempeskie, Farai Malianga, Hector
Morales, Kwesi Nkroma, Laurreta
Noble, LeeAnet Noble, Pamela Patrick,
Jive Poetic, Baba Wali Rahman, Mike
Ramsey, Gwenyth Reitz, Victor Sanchez,
Robby Stamper, Rohiatou Siby, Lisa
Smith, Karen Thornton-Daniels, Leese
Walker, Shannon Michael Wamser,
Adia Whitaker

Marketing & Communications

Box Office
Fred Dorso
Treasurer
Marsha Rosenberg
First Assistant Treasurer
Kevin McLoughlin, Charlie Dolce,
Russell Grier, Victor Jouvart
Assistant Treasurers

Publicity
Sandy Sawotka
Director of Publicity
Susan Yung
Publications Manager
Joe Guttridge, Adriana Leshko,
Sarah Garvey
Publicity Managers
David Hsieh, Monica Ortiz Rossi
Publicists
Lauren Morrow
Publicity Assistant
Tamar MacKay
Publications Assistant
Zoe Tarmy
Intern

Design
Clara Cornelius
Director of Design
Adam Hitt, Patrick Morin
Senior Designers
Ryan Rowlett
Senior Interactive Designer
tKatie Positerry
Interactive Designer
Casey Cleverly
Design Studio Coordinator

Michelle Angelosanto
Designer
Alicia Payette
Intern

Digital Media
Stephen Litner
Director of Digital Media
Christina Guarino
Digital Producer
Jacob Strauss
Digital Media Manager
Aaron Weibel
Digital Product Coordinator
Nicholas Breul
Digital Production Assistant
Benjamin Cohen
Manager of Video & Media
Production
Catherine Lee
Video Production Assistant
Alexander Guns
Video Intern

Marketing
Gillian Fallon
Director of Marketing
Raphaele Andriuzzi, Claire Frisbie,
Cynthia Lugo
Marketing Managers
Robert Wood
Copywriter
Jenny Choi
Copy Editor
Lily Friedman
Fiscal Coordinator
Cory Bracken
Jamie Kraus
Marketing Interns

Strategic Marketing
Molly Meloy
Director of Strategic Marketing
Melanie Cherry, Justin Mosen
Marketing Managers

Ticket & Customer Services
G. Scott Kubovsak
Director of Ticket and
Customer Services
Royda C. Venture
Ticket Services Manager
Giovanny Lopez
Ticket Services Coordinator
Latasha McNeil
Assistant Manager
Ryan Mauldin, Kristina Vega,
Darryl Bryant
Senior Ticket Services
Representatives
Cathy Beals, Anais Blin,
Monique Davis, Chari Dawes,
Amanda Gilkes, Melana Lloyd,
Katora Matthews, Edgar Mendoza,
Elsie Pacella, Shanice Tulley,
Noel Vega, Althea Wilkinson
Ticket Services Representatives

Finance & Administration
Finance & Administration
Ellen Leszynski
Administrative Coordinator

Finance
Brian Herrin
Controller
Tameka White
Accounting Manager
Claudia Bailey
Budget Manager
Seon Gomez
Accounting Associate
Brian Gee
Accounts Receivable Coordinator

Special Projects
Jeremy Dewey
Director, Project Management
Katie Dixon
Director, Special Projects

Capital Projects
Jonathan Jones
Director, Capital Projects
Matthew Baclini
Capital Projects Analyst
Carl Gillen
Capital Projects Manager
Laura Grady, Freddriguez Rucker
Capital Projects Coordinators

Fiscal
Kozue Oshiro
Fiscal & Operations Director
Tamisha Rappaport, Adam Sachs
Fiscal Managers
Douglas Fischer
Fiscal Coordinator

Government & Community Affairs
Tamara McCaw
Director of Government &
Community Affairs
Dewonnie Frederick
Community Affairs & Bazaar
Coordinator
Victor Rodriguez
Government & Community
Affairs Assistant

Human Resources
Seth Azizollahoff
Director of Human Resources
Jenny Rodriguez, MariLiza Backstrom
Human Resources Managers
Cynthia Smith
Payroll Manager
Anna Gartner
HR/Benefits Administrator

Information Technology
William Allen Lee III
Director of Information Technology
Thomas Brown
Tessitura Business Manager
Ira Sibulkin
Senior IT Manager
Chris Tusciuk
Web Development Manager
Timothy Assam
Systems Administrator
Svetlana Mikhalevskaya
Database Developer
Jason Q. Minnis
IT Project Manager
Matthew Taylor
Web Developer
John Roshen, Jersy Rodriguez
Network Analysts
Susan Bishop
Administrative Coordinator
Lucas Austin
IT Intern

Audience Research & Analysis
George A. Wachtel

Bookseller
Greenlight Bookstore

European Production Representative
On Tour Ltd., Roger Chapman

Film Buyer
Jeffrey Jacobs
Jacobs Entertainment, Inc.

Immigration Counsel
Jonathan Ginsburg, Fettman,
Tolchin and Majors, PC

Insurance Broker
Dewitt Stern

Legal Counsel
Ronald E. Feiner PC

Medical Consultants
Ahmar Butt, MD
Anders Cohen, MD

Restaurateur
Great Performances

Brooklyn Independent Television: Made in Brooklyn, For Brooklyn, ABOUT BROOKLYN



A COMMUNITY MEDIA PROGRAM OF
BRIC ARTS | MEDIA | BKLYN

PHOTO BY GABRIEL GONZALEZ

WATCH ONLINE

bricartsmedia.org/bit



bkindependenttv

MONDAY - FRIDAY

Noon - 3pm &
8pm - 11pm

Time Warner 56

Cablevision 69

RCN 84

Verizon 44



SITI Company Turns 20!

Share Our Stories...

Celebrate the Life of a Company

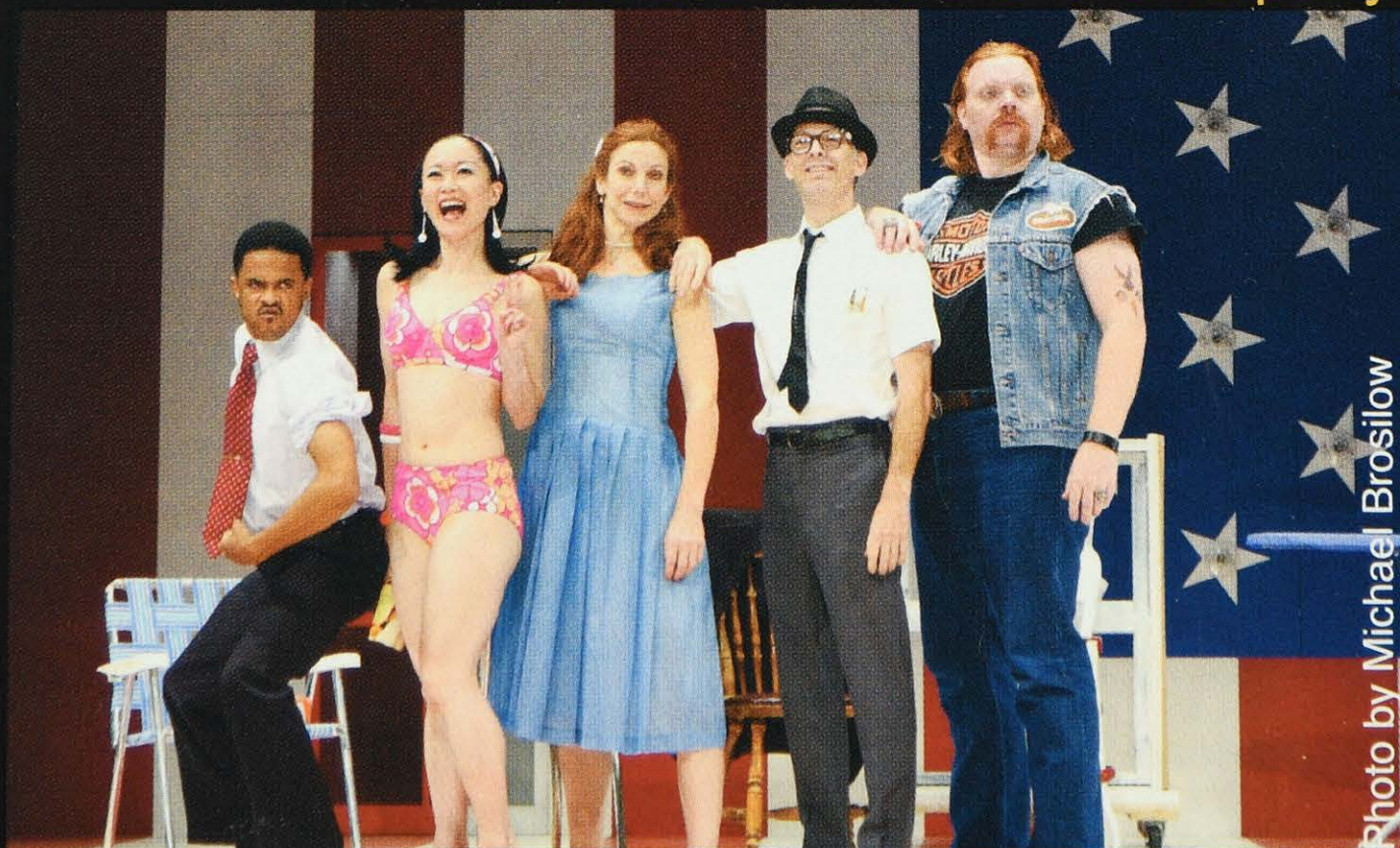


Photo by Michael Brosilow

Join the celebration at www.siti.org