

WOMEN'S PROJECT &
SITI COMPANY PRESENT

Room





WOMEN'S PROJECT LAB

The heart of WP's artistic programming is its free, two-year Lab for early to midcareer playwrights, directors, and producers. It is a vibrant community providing opportunities to network, brainstorm, test ideas, make new connections, and envision bold new work for the stage.

"Women's Project was my first theatrical home in New York and it gave me a safe space to develop my voice and my craft." — Katori Hall, WP Lab 2006-2008

WE INVITE YOU TO MEET THE WP LAB 2010-2012!

PLAYWRIGHTS

Alexandra Collier
Charity Henson-Ballard
Andrea Kuchlewski
Dominique Morisseau
Kristen Palmer
Melisa Tien
Stefanie Zadravec

DIRECTORS

Tea Alagic
Jessi D. Hill
Sarah Rasmussen
Mia Rovegno
Nicole A. Watson

PRODUCERS

Elizabeth R. English
Manda Martin
Roberta Pereira
Stephanie Ybarra



WOMEN'S PROJECT

under the direction of Julie Crosby
and

SITI COMPANY

under the direction of Anne Bogart and Megan Wanlass Szalla

present

Room

Based on the writings of Virginia Woolf

Directed by Anne Bogart

Adapted by Jocelyn Clarke

Starring Ellen Lauren

Scenic Design
Neil Patel

Costume Design
James Schuette

Original Lighting Design
Christopher Akerlind

Associate Lighting Design
Brian H Scott

Soundscape
Darron L West

Movement Dramaturg
Barney O'Hanlon

Production Stage Manager
Kris Longley-Postema

Production Manager
Aduro Productions

Press Representative
The Bruce Cohen Group

Leadership Support of Women's Project is generously provided by the Little Family Foundation/Jann Leeming, Shubert Foundation, Andrew W. Mellon Foundation New York Theatre Program, Lila Acheson Wallace Theater Fund/New York Community Trust, and Time Warner.

In addition, this production is supported by public funds from the New York State Council on the Arts, a state agency, and the Department of Cultural Affairs in the City of New York, Mayor Michael R. Bloomberg, Speaker Christine Quinn, and Council Member Gale A. Brewer.

Room was commissioned by the Wexner Center for the Arts at The Ohio State University with support from the Doris Duke Charitable Foundation, City Theatre in Pittsburgh, Pennsylvania and SITI Company.

March 12 - March 27, 2011
WP's Julia Miles Theater
New York City

DIRECTOR'S NOTE

Virginia Woolf wrote with delicacy, humor, anger, outrage, and passion from the point of view of a highly creative woman in the first half of the twentieth century. Her issues are still contemporary. *Room* examines these notions from the perspective we now share in after the first decade of the twenty-first century. Sampled from a lifetime of Woolf's writings, *Room* traces the movement of a creative spirit in exquisite crisis. Ellen Lauren portrays an artist in the pressure cooker of articulation. The play is about the room to move, the room to breathe, the room to imagine; emotional room, creative room.

Anne Bogart

Room runs approximately 85 minutes and will be performed with no intermission.

CAST

Ellen Lauren (Actor) — Associate artistic director for SITl. Company credits include: *Under Construction*, *Radio Macbeth*, *Who Do You Think You Are*, *Hotel Cassiopeia*, *Death and the Ploughman*, *Midsummer Night's Dream*, *Room*, *bobrauschenbergamerica*, *systems/layers*, *War of the Worlds*, *Cabin Pressure*, *The Medium*, *Culture of Desire*, *Going, Going, Gone*, *Orestes*, and *American Document* with Martha Graham Dance Co. National and international venues include: Bonn Germany, Iberoamericano Bogota, BAM Next Wave, Humana, Bobigny, Melbourne, Edinburgh, Singapore Festivals; Wexner, Krannert and Walker Center for the Arts; In NY; Dance Theater Workshop, NYTW, CSC, Miller, Public, Joyce Theater. Regional credits with SITl include: San Jose Rep, ART Cambridge, Court Theatre, Actors Theatre of Louisville: (including *Picnic*, *Adding Machine*, *Hay Fever*, *Miss Julie*, *Private Lives*). Ongoing classes and residencies in the US and abroad over 18 years. Additional credits include *The Women* (Hartford Stage), *Seven Deadly Sins*, New York City Opera (Kosovar Award for *Anna II*), *Marina*, *a Captive Spirit*, all with Anne Bogart. Resident company member: StageWest, Mass., The Milwaukee Repertory, The Alley Theatre, Houston. Associate artist for The Suzuki Company of Toga (SCOT), under the direction of Tadashi Suzuki; Venues include, Moscow Art Theatre, Toga Festival, Alexandrinsky Theatre, RSC, Theatre Olympics Athens and Shizuoka Japan, Buenos Aires Festival, Vienna Festival, Istanbul Festival, Festival Mundial Chile, Teatro Olimpico Italy, Montpelier France, Hong Kong Festival. Ongoing faculty member: The Juilliard School of Drama; Associate Director Summer Training Program, Toga, Japan. Fox Fellowship recipient for Distinguished Achievement 2008.

WHO'S WHO

Anne Bogart (Director) — is the Artistic Director of SITl Company, which she founded with Japanese director Tadashi Suzuki in 1992. She is a Professor at Columbia University where she runs the Graduate Directing Program. Works with SITl include *American Document*, *Antigone*, *Under Construction*, *Freshwater*, *Who Do You Think You Are*, *Radio Macbeth*, *Hotel Cassiopeia*, *Death and the Ploughman*, *La Dispute*, *Score*, *bobrauschenbergamerica*, *Room*, *War of the Worlds*, *Cabin Pressure*, *War of the Worlds-The Radio Play*, *Alice's Adventures*, *Culture of Desire*, *Bob*, *Going, Going, Gone*, *Small Lives/Big Dreams*, *The Medium*, Noel Coward's *Hay Fever* and *Private Lives*, August Strindberg's *Miss Julie*, and Charles Mee's *Orestes*. She is the author of three books: *A Director Prepares*, *The Viewpoints Book* and *And Then, You Act*.

Jocelyn Clarke (Adaptation) — is a freelance dramaturg and writer. He is a member of the artistic staff of the Sundance Theatre Lab and has taught

dramaturgy at the Kennedy Center (D.C) and at Columbia University. He has written five plays for Anne Bogart and SITI Company: *Bob*, *Alice's Adventures*, *Room*, *Score* and *Antigone*. *Here You Are Human*, his new project with the Tiger Lilies, premiered in the Archa Theatre in Prague in September.

PRODUCTION TEAM

Neil Patel (Scenic Design) — With SITI Company: *Under Construction*, *Hotel Cassiopeia*, *War of the Worlds*, *The Adding Machine*, *Private Lives*, *Hayfever*, *A Midsummer Night's Dream*, *Room*, *Bob* and *Score*. Broadway: *Fat Pig*, *Wonderland*, *Oleanna*, [title of show], *Sideman* (West End and Kennedy Center), *'Night Mother*, *Ring of Fire*. West End: *Underneath the Lintel*. Off Broadway: Roundabout Theater, Manhattan Theater Club, Playwrights Horizons, New York Theatre Workshop, Second Stage, Vineyard Theater, MCC Theater, Primary Stages, Brooklyn Academy of Music. Regional: Kennedy Center, La Jolla Playhouse, Center Theatre Group, Chicago Shakespeare Theater, Guthrie Theater, Steppenwolf Theater, Alley Theater, Arena Stage, Alliance Theater. International: Royal Shakespeare Company, Edinburgh International Festival, Parco Theater Tokyo, Theater Archa, Hebbel Theater. Opera: New York City Opera, Montreal Opera, Santa Fe Opera, Minnesota Opera, Opera Theater St. Louis, Tokyo Nikikai Opera Theater. Dance: *Shadowland* (Pilobolus). Television and Film: *In Treatment* (HBO), *Alone* (Gregory Orr Productions). Helen Hayes Award, EDDY Award, Numerous Drama Desk and Hewes Nominations, 1996 and 2001 OBIE for sustained excellence. www.neilpatel.design.com

James Schuette (Costume Design) — has designed over 15 productions for SITI Company. Recent work as a set and/or costume designer includes Tarrell Alvin McCraney's *Brother/Sister* plays directed by Tina Landau (McCarter Theatre, Public Theater and Steppenwolf), *Ghosts of Versailles* directed by James Robinson (Opera Theatre of Saint Louis and the Wexford Festival), *Endgame* directed by Frank Galati (Steppenwolf) and Tracy Letts' *Superior Donuts* directed by Tina Landau (Broadway/Music Box). His work has been seen at the American Repertory Theater, Actors Theatre of Louisville, American Conservatory Theatre, Arena Stage, Brooklyn Academy of Music, Berkeley Rep, Court Theatre, Goodman Theatre, Minneapolis Children's Theatre, Long Wharf, La Jolla Playhouse, Mark Taper Forum, Manhattan Theatre Club, New York Theatre Workshop, Oregon Shakespeare Festival, Playwrights Horizons, The Public Theatre, Papermill Playhouse, Seattle Rep, Trinity Rep, Vineyard Theatre, Yale Rep, Boston Lyric Opera, Houston Grand Opera, Seattle Opera, New York City Opera, Santa Fe Opera, Minnesota Opera, Glimmerglass Opera, Opera Colorado and internationally. Upcoming projects include *Hot L Baltimore* (Steppenwolf), *La Fille du Regiment* and *The Death of Klinghoffer* (Opera Theatre of St Louis), and *Carmen* (Glimmerglass Opera).

Christopher Akerlind (Original Lighting Design) — For Women's Project: *Lascivious Something*. With Anne Bogart and SITI: *Room*; *Score*; *Hayfever* (Actors Theatre of Louisville); *A Midsummer Night's Dream* (San Jose Rep); *La Dispute* (American Repertory Theater). Operas directed by Anne Bogart: *Lilith* (NYC Opera); *I Capuleti e i Montecchi* (Glimmerglass Opera). Recently: *Ariadne auf Naxos* (Opera Nationale de Bordeaux), *The Emperor of Atlantis* (Boston Lyric Opera), *Cymbeline* (The Shakespeare Theatre, DC), *Hubicka*, *The Golden Ticket*, and *Virginia* (Wexford Festival Opera), *K'do!* (Foret Nationale, Belgium), *Orpheus X* (TFANA, Hong Kong and Edinburgh Festivals), and *Tamerlano* (Los Angeles Opera). Received the Tony, Drama Desk, Outer Critics Circle awards for *The Light in the Piazza*, an Obie for Sustained Excellence, the Michael Merritt Award for Design and Collaboration, among many others awards and nominations.

Brian H Scott (Associate Lighting Design) — With SITI Company: *American Document* (2010), *Antigone*, *Freshwater*, *Who Do You Think You Are*, *Radio Macbeth*, *Hotel Cassiopeia*, *Death and the Ploughman*, *bobrauschenbergamerica* (2004 Henry Hewes Design Award), *systems/layers*, *War of the Worlds - The Radio Play*. With Rude Mechanicals: *The Method Gun*, *Lipstick Traces*, *Big Love*, *Cherrywood*, *Matchplay*. Classic Stage Company: *The Age of Iron*, *Hamlet*, *Richard II*, *Richard III*, *The Tempest*. With Playwrights Horizons: *Dead Man's Cell Phone*. With NYTW: *Songs From an Unmade Bed*.

Darron L West (Soundscape) — A SITI Company member since 1993 and first collaborated with Anne Bogart in 1990 while resident sound designer at Actors Theatre of Louisville. His work has been heard in over 400 productions both nationally and internationally. His accolades include a 1998 OBIE award for SITI's *Bob*, a 2000 Princess Grace Award, an Entertainment Design Magazine EDDY, the 2004 and 2005 Henry Hewes Design award, and a 2006 Lortell Award. As Director: *Kid Simple* (2004 Humana Festival at Actors Theater of Louisville), *Lilly's Purple Plastic Purse* and *Eurydice* (Children's Theater Co. Minneapolis), *Big Love* (Rude Mechanicals Austin, Texas) and SITI Company's *War of the Worlds - The Radio Play* (National Tour).

Barney O'Hanlon (Movement Dramaturg) — has been a SITI Company member since 1994 and collaborator with Anne Bogart since 1986. International: Dublin Theatre Festival, Edinburgh International Festival, Prague Quadrennial, MC93 Bobigny, France, Bonn Biennial, Festival Iberoamericano, Bogota, Kaleideskop Theatre, Copenhagen, Denmark, Royal Shakespeare Company, Stratford on Avon. New York: BAM's Next Wave Festival, Public Theater, New York Theater Workshop, PS 122, Dance Theater Workshop, New York City Opera, Glimmerglass Opera. Regional: American Repertory Theater, Trinity Rep., Alley Theater, Actors Theatre of Louisville, Steppenwolf, Alabama Shakespeare Festival, San Jose Rep, Portland Stage, UCLA Performing Arts, Walker and Wexner Arts Centers, the Krannert Art Center, Austin's Rude Mechs (with Deborah Hay) and numerous Humana Festivals. Other: Los Angeles Opera, Opera Omaha, Prince Music Theater and most recently, SITI Company's collaboration with the Martha Graham Dance Company on *American Document* (2010).

Aduro Productions (Production Management) — is Carolyn Kelson and Jason Janicki. Off-Broadway credits include: *Fela!*, *Flamingo Court*, *Crooked*, *Sand*, *Aliens With Extraordinary Skills*, *Freshwater*, *Or,, Smudge*, *Lascivious Something*, *Tall Grass*, *Fugue*, *Slava's Snowshow*, *The Fantasticks*, *My Name is Rachel Corrie*, *Striking 12*, *The Spanish Play*, *Sealed For Freshness*, *Mayumana*. International: *SpongeBob Square Pants Live*, Broadway Asia.

Kris Longley-Postema (Production Stage Manager) — Previous stage management work with SITI Company includes *Radio Macbeth*, *Death and the Ploughman*, *American Document* (2010) (with Martha Graham Dance Company), *bobrauschenbergamerica*, *Antigone*, and *Who Do You Think You Are*. Recent credits include *Notes from Underground* at Theatre for a New Audience, La Jolla Playhouse and Yale Repertory Theatre; The Santa Fe Opera's *Albert Herring* and *The Tales of Hoffmann*; and the 75th Anniversary Tour of *Porgy & Bess*. Other notable credits include The Public Theater, The Playwrights Realm, The Playwrights' Center and Glimmerglass Opera. A graduate of Cornell College, he received his MFA from Yale School of Drama.

The Bruce Cohen Group, Ltd (Press Representative) — is celebrating its 35th year of publicizing the good causes that make New York City the capital of the world: the performing and visual arts, community development, historic preservation, business improvement districts, public spaces, tourism and organized

labor. In the theatre world, the group represents Theatre for a New Audience and Ensemble Studio Theatre. Bruce Cohen is a proud honorary member of I.A.T.S.E. Local One and former president of I.A.T.S.E. Local 18032. He owes his first job to Merle Debuskey.

Megan E. Carter (*Associate Artistic Director, Women's Project*) — Prior to joining Women's Project in 2006, Megan worked as a director, dramaturg and educator in Seattle and New York. Select New York credits include *Lascivious Something* by Sheila Callaghan; *Or*, by Liz Duffy Adams; *Smudge* by Rachel Axler; *Freshwater* by Virginia Woolf; *Aliens with Extraordinary Skills* by Saviana Stanescu; *Sand* by Trista Baldwin; Mac Wellman's *Sincerity Forever* and *Harm's Way*. Megan has collaborated with Tea Alagic, Anne Bogart, Lear deBessonet, Katori Hall, Carson Kreitzer, Daniella Topol and with such companies as Intiman Theatre, ACT Theatre, and Classic Stage Company. She has an MFA in Dramaturgy and Theatre Criticism from Brooklyn College/CUNY.

Megan Wanlass Szalla (*Executive Director, SITI Company*) — has been a member of SITI Company since 1995. Megan was the company stage manager for five years prior to becoming SITI's Executive Director. In her tenure with SITI, Megan has helped to create over 30 shows. She began working with Anne Bogart during *The Adding Machine* at Actors Theatre of Louisville. She has an Arts Administration Certificate from New York University, attended the Executive Program for Non-Profit Leaders at Stanford University Business School, was a member of the Arts Leadership Institute Charter Class at Teachers College, Columbia University and holds a B.A. in Theater from Occidental College in Los Angeles, California. Megan currently serves on the board of Theatre Communications Group (TCG).

Julie Crosby (*Producing Artistic Director, Women's Project*) — prior to joining Women's Project in 2005, Julie worked for over two decades on and off Broadway and international productions with many towering and empowering artists and scholars, including Laurie Anderson, Anne Bogart, Ruth Brown, Betty Buckley, Barbara Cook, Lea DeLaria, Eve Ensler, Joan Ferrante, Linda Hopkins, Julie Hughes, Sarah Jessica Parker and Leslie Uggams, to name but a few. A published author and university lecturer, Julie received her Ph.D. from Columbia University.

PRODUCTION STAFF

Sound Board Operator
Light Board Operator
Production Electrician
Production Carpenter
Spotlight Operator

Asa Wember
Kate Conover
Adrian Kozlow
Danny Thomas
James Lanius

Ellen Lauren and Kris Longley-Postema are members of Actors Equity Association, the union of professional actors and stage managers in the United States.

All designers are members of the United Scenic Artists Union (USA).

Anne Bogart is a member of SDC, the Society of Stage Directors and Choreographers.

Theater Women's ^ Project

WP ARTISTIC & ADMINISTRATIVE PERSONNEL

Producing Artistic Director	Julie Crosby
Associate Artistic Director	Megan E. Carter
Director of Marketing	Deane Brosnan
General Manager	Karron Karr
Grants Manager	Elz Cuya
Theater Manager/Social Media Coordinator	Monet Hurst-Mendoza
Social Media Editor	James Daniel Haro
House Managers	Rebecca Poccia, Lauren Duckworth
Education Director	Johnmichael Rossi
Teaching Artists	Grace Chapman, Carla Ching, Rachel Evans, Alicia Frank, Nedra Gallegos, Kalle Macrides, Taryn Matusik, Mary Murphy, Erin Ronder
Interns	Hillel Herzfeld, Helen Jaksch, Samara Weiss, Lara Zlatos
Legal Counsel	Leigh A. Giroux, Dumler & Giroux and Adrienne Saldaña, Spivak Lipton
Auditors	Schall & Ashenfarb
Financial Services	Patricia Taylor
Banking	JP Morgan Chase
Payroll Services	Castellana Services, Inc.
Press Representative	The Bruce Cohen Group
Graphic Designers	Christy Briggs, Heather Honnold
Production Photography	Carol Rosegg
Website Design & Services	Kurt Johns, Artztekk LLC
IT Consultant	Daniel Pardes

Women's Project Shines!

Women's Project delivers compelling theater, innovative programs and electric events as the nation's oldest and largest company dedicated to producing and promoting theater created by women.

Our mainstage seasons garner reviews a theater company can bank on. Most recently, *Variety* raved "Kudos to Women's Project for its dazzling work". *Time Out New York* trumpeted "Women's Project is on a roll!". And *The New York Times* declared us "precise and imaginative".

Under the leadership of Julie Crosby since 2006, Women's Project presents the most dynamic and talented women playwrights writing for the American stage. Most recently, the impressive list includes: *Crooked* by Catherine Trieschmann, Saviana Stanescu's *Aliens with Extraordinary Skills*, Trista Baldwin's *Sand, Or*, by Liz Duffy Adams, *Smudge* by Rachel Axler, Sheila Callaghan's *Lascivious Something* and Lynn Rosen's *Apple Cove*.

Julia Miles founded Women's Project in 1978 to address the conspicuous underrepresentation of women artists working in the American theater. Even today, only 20% of opportunities in the professional theater nationwide are granted to women. Women's Project continues to combat gender bias with the simple act of job creation. In the past 32 years, Women's Project has staged over 600 mainstage productions and developmental projects, and published 11 anthologies of plays by women. And

each year, WP showcases extraordinary women at our annual *Women of Achievement Awards* which pays homage to luminaries such as Audra McDonald, Eve Ensler, Estelle Parsons, Whoopi Goldberg, Vanessa Redgrave, and Chita Rivera, to name but a few. Visit www.WomensProject.org.

WP LAB 2010-2012

The heart of WP's artistic programming is its free, two-year Lab for early to mid-career playwrights, directors, and producers. It is a vibrant community providing opportunities to network, brainstorm, test ideas, make new connections, and envision bold new work for the stage.

WP is deeply committed to its Lab artists and alumnae, who in recent seasons have written or directed most of WP's mainstage and Hothouse productions, including work by Lear deBessonet, Liz Diamond, Anne Kauffman, Carson Kreitzer, Pam MacKinnon, Lynn Rosen, Saviana Stanescu, Daniella Topol, Joy Tomasko, and Meiyin Wang.

PLAYWRIGHTS

Alexandra Collier
Charity Henson-Ballard
Andrea Kuchlewski
Dominique Morisseau
Kristen Palmer
Melisa Tien
Stefanie Zadravec

DIRECTORS

Tea Alagic
Jessi D. Hill
Sarah Rasmussen
Mia Rovegno
Nicole A. Watson

PRODUCERS

Elizabeth R. English
Manda Martin
Roberta Pereira
Stephanie Ybarra

BOARD OF DIRECTORS

Jann Leeming, *Chair*

Cassandra Del Viscio
Lucia Hwong Gordon
Annette Green
Jin Hu
Martha H. Jones
Casey Kemper
Donald J. Loftus
Cassandra Seidenfeld Lyster
Adrienne Saldaña
Arlene Scanlan

Julia Miles, *Founder & Artistic Director Emeritus*
Tina Chen, *Chair Emeritus*
Pat Schoenfeld, *Chair Emeritus*

ADVISORY BOARD - Billie Allen, Michele Ammon, Anna Becker, Kim James Bey, Sallie Bingham, Beth Bickers, Kathleen Chalfant, Bruce Cohen, Liz Diamond, Susan Elrod, Denise Ganjou, Diane Heatherington, Julie Hughes, Morgan Jenness, Susan Jonas, Diane Krausz, Esq., Harriet Newman Leve, Emily Mann, Lucy Martin, Mary McDonnell, Nell Merlino, Donna Murphy, Gail Parenteau, Caymichael Patten, Carey Perloff, Louis Scheeder, Joan Vail Thorne, Paula Vogel, Kat Williams

LEADERSHIP COUNCIL - Maria Alexandria Beech, Kirsten Berkman, Krystal Bowden, Lisa Cusano, Kamilah Forbes, Olivia Greer, Jade Guanchez, Lanna Joffrey, Erin McMurrough, Roseanne Medina, Lisa Pittelman, Jenny Rosenbluth, Laura Wagner, Tamilla Woodard

WP SUPPORTERS

The Board of Directors and staff of Women's Project express sincere appreciation to our supporters, whose financial contributions allow us to bring our mission to life. To learn about the benefits of giving, please contact Women's Project at 212.765.1706. The following represents contributions of \$100 or more received from March 1, 2010-March 1, 2011.

Partner (\$25,000+)

Andrew W. Mellon Foundation New York
Theater Program administered by the
New York Foundation for the Arts
Charles Evans Foundation/Bonnie Pfeifer Evans
Department of Cultural Affairs in the
City of New York, Mayor Michael R. Bloomberg
Lila Acheson Wallace Theatre Fund/
New York Community Trust
Little Family Foundation/Jann Leeming
New York State Council on the Arts,
Governor Andrew M. Cuomo
Shubert Foundation
Time Warner

Sponsor (\$10,000+)

Lucia Hwong Gordon
Annette Green
Martha H. Jones
Harold & Mimi Steinberg Charitable Trust
HSN, LLC
Hudson Valley National Corporation/
Craig & Deborah Thompson
P&G Prestige/Donald J. Loftus
The Jones Group

Champion (\$5,000+)

Bay and Paul Foundations
Broadway Cares/Equity Fights Aids
Tina Chen
Julie Crosby
Lucille Lortel Foundation
Michael Tuch Foundation
Rudin Foundation

Benefactor (\$1,000+)

Sallie Bingham
Peter Baiocco
Boxer Foundation/Michele Walker
Henry Buhl
Gale A. Brewer, Member, NYC Council
Jennifer Chambers
Cassandra Del Viscio
Dramatists Guild Fund
Marc Eesley
Eve Ensler
Angelina Fiordellisi
Edward & Lori Forstein
Frederick Loewe Foundation
Jane Friedman
John Golden Fund
Yaz & Valentin Hernandez
John & Nizza Heyman
Jin Hu
Harriet Inselbuch
IATSE Local One/James J. Claffey, Jr.
Casey Kemper/Collegiate Asset Management Corp.

LeFrak Charitable Trust/Francine LeFrak
Cassandra Seidenfeld Lyster
Dana & Lia Matthrow
Irene Mausner
Maybelline Garnier, Inc.
Julia Miles/Marya Cohn
Helen Mills
Charles Moed
News Corporation Foundation
Carol Ostrow
Christine Quinn, Speaker, NYC Council
Colleen & Gary Rein
Adrienne Saldaña, Esq.
Arlene Scanlan
Serino Coyne/The Addams Family
Martin D. & Jean Shafiroff Foundation
Jack Sharkey
The Shubert Organization
Liora Sternberg
Sunshine Sachs & Associates
Albert H. and Robyn Surprenant
Heather Thompson
Joan Vail Thorne
Barbara & Donald Tober
Gregg & Debra Wasser
Margaret Whitton/Jewish Communal Fund
Terry Young/Bryan Janeczko

True Believer (\$500+)

Paola Bacchini
Eric Braverman
Matthew J. Brief & Gail Parenteau
Linda Calandra/Pfizer Foundation
Iris Cantor/Amethyst LLC
Edgar & Elissa Cullman
Elinore Cuya
Dr. Jill S. Dolan
Nina Eisenman
Fraydun Foundation Inc./Jennifer Manocherian
Sara Herbert Galloway
Kathy & Rick Hilton
Julie Hughes
Sara Kendall
Hilda Kraker
Diane Krausz, Esq.
Pamela Laudenslager
Ida Liu
Marlborough Gallery, Inc./Marcia G. Levine
Dr. Irena K. Mausner
Mary McDonnell
Helen J. Mills
Elisabeth Morten
Paolo Productions Inc./Lauren Mitchell
Estelle Parsons
Maria Antonia Paterno-Castello
Jane Preiser
Dr. Louis Scheeder

Allegra Schorr
Ramona Singer/RMS Fashions, Inc.
Andrew Stein
Caroline P.Vogt

Beautiful Dreamer (\$250+)

Dr. Judith E. Barlow
Katherine Beard
Robert A. Buckley, Esq.
Ann Butera
Claire Christopher
Lisa Del Duke
Liz Diamond
Caroline Downey
Lucy Martin & Jack Gianino
Gary Giardina
Nancy Gibbs
Helping Hand Sales Inc.
Morgan Jenness
Karron Karr
Debra Kozee/C&S Insurance Brokers, Inc.
Kathryn Mayer
Michael Mendelsohn & Lynn Rosen
Gordon & Heide Miller
Franklin Moss & Nancy Sills
Paragon Building Artisans LLC
Carey Perloff
Rosalinda Perron
Bruce S. Rosen
Kay. G. Rosen
Dr. Louis Scheeder
Patricia Schoenfeld
Marion Simon
Diana Son
Deborah Zeigler

Inventive Spirit (\$100+)

Anonymous (2)
Amy Ballis
Jonathan Bank
Milly Barranger
Deborah Brevoort
Danusia Cameron
Karen Carpenter
Nancy Ford Charles
Clare Coss
Margaret Cotter
Blythe Danner
Jaqueline Davis
Merle B. Debuskey & Pearl Somner
Decision Training Systems/Gordon Miller
Barbara L. Feinstein
Dr. Joan Ferrante
Joan D. Firestone
Emily Freed
Aimee Garn
William H. Green, III
Barbara Harris
Diane Heatherington
Julie Hughes
Catherine Hyland
The Krupman Family Foundation
Susan Laubach
Harriet Leve
Barbara Levey
Patricia H. Lin

Virginia Lis
Anne-Marie Mallon
Patricia McNamara
Aaliyah Miller
Ellen Monk
Joseph P. Morra/Boomerang Fund
L. Glenn Poppleton
Stanley Raiff
Sloan Shelton
Georgia Shreve
Marion Simon
Peggy Stafford &
Jane A. Vipond
Honey Waldman
Inez Weinstein
Jacalyn Weinstein
Mildred & George Weissman Fund
Charles Wright

In-Kind Donations

Legal Services generously provided by Leigh A. Giroux, Dumler & Giroux, and Adrienne Saldaña, Spivak Lipton.

Publicity Services generously provided by Bruce Cohen, The Bruce Cohen Group.

Video Design and Editing Services generously provided by Cassandra Del Viscio, Edgeworx Studios.

Cover photo credit: AJ Zanyk

WP LIFETIME MEMBERS

Anonymous, Sallie Bingham, Tina Chen, Bruce Cohen, Julie Crosby, Malcolm Duncan, Lucia Hwong Gordon, Annette Green, Hilda Kraker, Catherine Leeming, Debi Leeming, Jann Leeming, Susan Leeming, Arthur D. Little, Kathryn Mayer, Estelle Parsons, Susan K. Reed, Karen Roth, Nicole Seidel, and Linda Toledo.

AFFILIATIONS

Women's Project is a proud member of the Alliance of Resident Theatres/New York (Ginny Loulodes, Executive Director) and the New York Women's Agenda (Beverly Neufeld, President). Find information about this and other off-Broadway theaters at www.offbroadwayonline.com, a project of A.R.T./New York.



State of the Arts



NYSCA

The Andrew W. Mellon Foundation



The Wallace Foundation



LUCILLE LORTEL
FOUNDATION

SHUBERT
FOUNDATION INC.

THE NEW YORK
COMMUNITY TRUST
NYCT

Time Warner provides
leadership support of
new play development at
Women's Project.

Time Warner

SITICOMPANY

SITI COMPANY

SITI Company is an ensemble theater company led by Anne Bogart. Its mission is to:

- ♦ Create bold new productions;
- ♦ Perform and tour these productions nationally and internationally;
- ♦ Train together consistently;
- ♦ Train theater professionals and students in an approach to acting and collaboration that forges unique and highly disciplined artists for the theater;
- ♦ Create opportunities for artistic dialogue and cultural exchange.

Founded in 1992 by Anne Bogart and Tadashi Suzuki, SITI Company began as an agreement to redefine and revitalize contemporary theater in the United States through an emphasis on international cultural exchange and collaboration. Originally envisioned as a summer institute in Saratoga Springs, New York, SITI expanded to encompass a year-round company based in New York City with a summer season in Saratoga. The Company is known nationally and internationally as a top-level artistic collective that generates groundbreaking theater while also training artists from around the world.

In addition to Artistic Director Anne Bogart, SITI Company is comprised of ten actors, four designers, a playwright, a stage manager and an executive director. The company represents a change in thinking about the relationships between artists and institutions. SITI Company has formed relationships with theaters and venues around the world who present the Company's work. Find out more at siti.org.

CONTACT AND CONNECT

siti.org

facebook.com/SITICompany

twitter.com/siticompany

siti.grouppsite.com

520 8th Avenue

3rd Floor, Suite #310

New York, NY 10018

212.868.0860 phone

inbox@siti.org

Exclusive Worldwide Tour Representation:

Rena Shagan Associates

16A West 88th Street, New York, NY 10024

(212) 873-9700 / (212) 873-1708 (fax) www.shaganarts.com

SITI Company is: Akiko Aizawa, J. Ed Araiza, Anne Bogart, Will Bond, Gian Murray Gianino, Leon Ingulsrud, Ellen Lauren, Kelly Maurer, Charles L. Mee, Jr., Elizabeth Moreau, Tom Nelis, Barney O'Hanlon, Neil Patel, James Schuette, Brian H Scott, Megan Wanlass Szalla, Stephen Webber and Darron L West

SITI Company Board of Directors: J. Ed Araiza, Anne Bogart, Gigi Bolt (Chair), Martha Coigney, Barbara Olsen Cummings, Lauren Flanigan, Rena Chelouche Fogel, Jason Hackett (Secretary), Chris Healy (Treasurer), Cherry Jones, Ellen Lauren, Thomas Mallon, Charles Mee, Barney O'Hanlon and Leonard Perfido (Vice-Chair)

SITI Company Staff & Interns: Megan Wanlass Szalla, Executive Director; Roberta Pereira and David Roberts, Associate Producers; Carly Hoogendyk and Annie Rubino, Interns

SITI Company Consultants: Ellen Pearre Cason, Accountant; Maggie Elliott and James Harley, Graphic Designers; Chris Healy and Thomas Mallon, Attorneys; Barbara Janowitz and Michael Ross, Strategic Planning; Jenny Lerner and Isabelle Doconinck, Press Agents; Al Foote, Web Programmer; Igrid Abreu, Susan Berger, Lisa Iapicco, Ruth Philpot, and Alison Zivin, Board Development

SITI DONORS

SITI Company is deeply grateful to the generous donors who are listed below:

INDIVIDUALS

SITI Inner Circle

Kyo Aizawa
Mark Allison and Stephanie Holmquist
Anne Donovan Bondari
Jane Butler and Daniel Lindau
Barbara and Jim Cummings
Jeanne Donovan Fisher
James Gillson
Wendy vanden Heuvel
Kim Ima
Cherry Jones
Marc Masterson
Leonard and Ruth Perfido
Sarah Plimpton
Owen Schaub
Daniel and Joanne Smith
Jaan Whitehead

SITI Circle

Carolyn Anderson
Arthur and Judith Barlow
Ken Barnett
Katie Barthmaier
Anne Bogart
Gigi Bolt
Elizabeth Boone
Daniel Boylen
Karen Brooks-Hopkins
Susan Bruce and Peter Hedges
Lynn and Ron Cohen
Martha Coigney
Julie Crosby
Scott Cummings
Bonnie Eckard
Dave Edson
Libby Edwards
Britton Fisher
Louise Fishman
Lauren Flanigan
Rena Chelouche Fogel
Erik and Marnie Frederickson
Sherri Geldin
Rhoda Grauer
Todd Griffin
Jason and Mandy Hackett
Anne Hamburger
John Hart
Chris Healy and Amy Sevic
Nicole Borrelli Hearn
Holly Hendrix
Tom Hewitt
Robert Joondeph
Barbara Janowitz
Jeff Kallenberg
Frances E. Kumin
Ellen Lauren
Roslyn Leopold
Romaine Macomb

Tom Mallon
George Mayer, Jr.
Charles Mee
Joe and Holly Mueller
Rick and Jennifer Nelson
Tchera Niyego
Harold Norris
Sandra Meyer Nunes
Carol Ockman
Barney O'Hanlon
Joan Parker
Betty Rauch
Elizabeth Rosier and Ruth Sternberg
Michael Ross
Sofia Sequenzia and John Shostrom
Kathryn Shahani
Elizabeth Spreen
Morgan Stanley
Catharine Stimpson
R. Lee Stump
Jeanine Thompson
Roberta Ventura
Paula Vogel
Megan Wanlass Szalla
Robert and Anne Webber
Kim Weild
Micki Wesson
Debra Winger and Arliss Howard

Friends of SITI

Jon Aaron
Akiko Aizawa
David F. Allen
Arnold Aronson
June Ballinger
David Baloché
Doreen Bechtol
Michael Bettencourt and Maria Alvarez
Ingrid Blekys
Deb Brothers and Paul Park
Rich Brown
Michael Cadden
Judith Chaffee
Angela and Brooks Chamberlin
Tucker Chase
Paul Christensen
Katherine Clarvoe
Jeff Coburn
Scott Cummings
Julie Cursi
Tove-Lin Dalmau
Livia De Paolis
Suzanne Delle
Laurie Dowdeswell
Allison Dubin
Acacia Duncan
Erma Duricko
Dr. Katie M. Embree

Dina Emerson
 Rebecca Engle
 Leslie Ferreira
 Shannon Fillion
 Todd Fisher
 Helene Foley
 Jeffrey Frace
 Tara and Christian Fredrickson
 David Gammons
 Polly Garcia
 Constantine Germanas
 Antonia Gianino-Hoekstra
 Elizabeth Given
 Wendy Goldberg
 Jen Grigg
 Judith Guido
 Linda Hammond
 Megan Hanley
 Celine Havard
 Dawn Helsing
 Richard Hess
 Susan Hightower
 Jeffrey Hill
 Ann Hollinger
 Dorothy Holland
 Dave Horak
 Carol Huston
 Adele Jayla
 Jen Johansen
 Thomas Juarez
 Gabriel Kalomas
 Jennifer Landon
 Adam Lerman
 Robin Levenson
 Marita Lindholm-Gochman
 Brett Little
 Danielle Long
 William Lynch
 Kara L. Manning
 Donnie Mather
 Julio Matos
 Mitchel McElya
 Brian Mertes
 Shira Milkowsky
 Tina Mitchell
 Tina Mith
 Elizabeth Moreau
 Wendy Morrill
 Lethia Nall
 Sade Namei
 Adale O'Brian
 Jacqueline O'Hare
 Matt Opatrny and Jessica Burr
 Julie Paparella
 Melissa Patterson
 Riikka Pelkonen
 Denise Pelletier
 M.T. Pitz
 Flora Plumb
 Ruben Polendo
 Hilary Poole
 Flavia Pyramo
 Margaret Ragan
 Brian Reid
 Sophia Remolde

Joan Reutershan
 Nancy Reynolds
 James Rieser
 David Roberts and Paul Di Donato
 Nancy Lee Ruyter
 Karen June Sanchez
 Risa Shoup
 Katherine Spelman
 Joanna Spinks
 Lynn Stirrup
 Rebecca Strang
 Samuel Stricklen
 Yuko Takedo
 Beatrice Tappawan
 Sherry E. Teitelbaum
 Peter and Rose Anne Thom
 Aimee Tsao
 Jackie Walker
 Deborah Wallace
 Lorna Wanlass
 Julia Whitworth and Ray Neufeld
 Misti Wills
 Lisa Wylam
 Benjamin Yalom
 Stephanie Ybarra
 Carol Yorke
 Face Yu

To become a contributor to SITI Company, call the office at 212-868-0860 or visit siti.org. All donations listed in this program include gifts and pledges received through February 2011.

FOUNDATION, GOVERNMENT, AND CORPORATE SUPPORT

Patrons (\$25,000+)

Carnegie Corporation of New York
 The Andrew W. Mellon Foundation,
 New York Theater Program, administered
 by the New York Foundation for the Arts
 The National Endowment for the Arts
*Leading for the Future: Innovative Support for
 Artistic Excellence*, an arts initiative created
 by Nonprofit Finance Fund (NFF) and
 funded by the Doris Duke Charitable
 Foundation
 Taproot Foundation

Benefactors (\$10,000 - \$24,999)

The Fan Fox & Leslie R. Samuels Foundation
 The New York State Council on the Arts
 Public Funds from New York City Department
 of Cultural Affairs
 The Shubert Foundation

Sponsors (\$1,000 - \$9,999)

The JKW Foundation
 The Lucille Lortel Foundation, Inc. / New York
 Times Company Foundation Fund for
 Midsize Theatres, a project of A.R.T./
 New York
 Reed Smith LLP
 Tobin Foundation for Theatre Arts

SITI COMPANY PRESENTS

"I have recommended that my friends stay away from this play."

UNDER CONSTRUCTION

By **CHARLES MEE**
Directed by **ANNE BOGART**

"It changed what I thought could be done in the theater. I will never forget it."

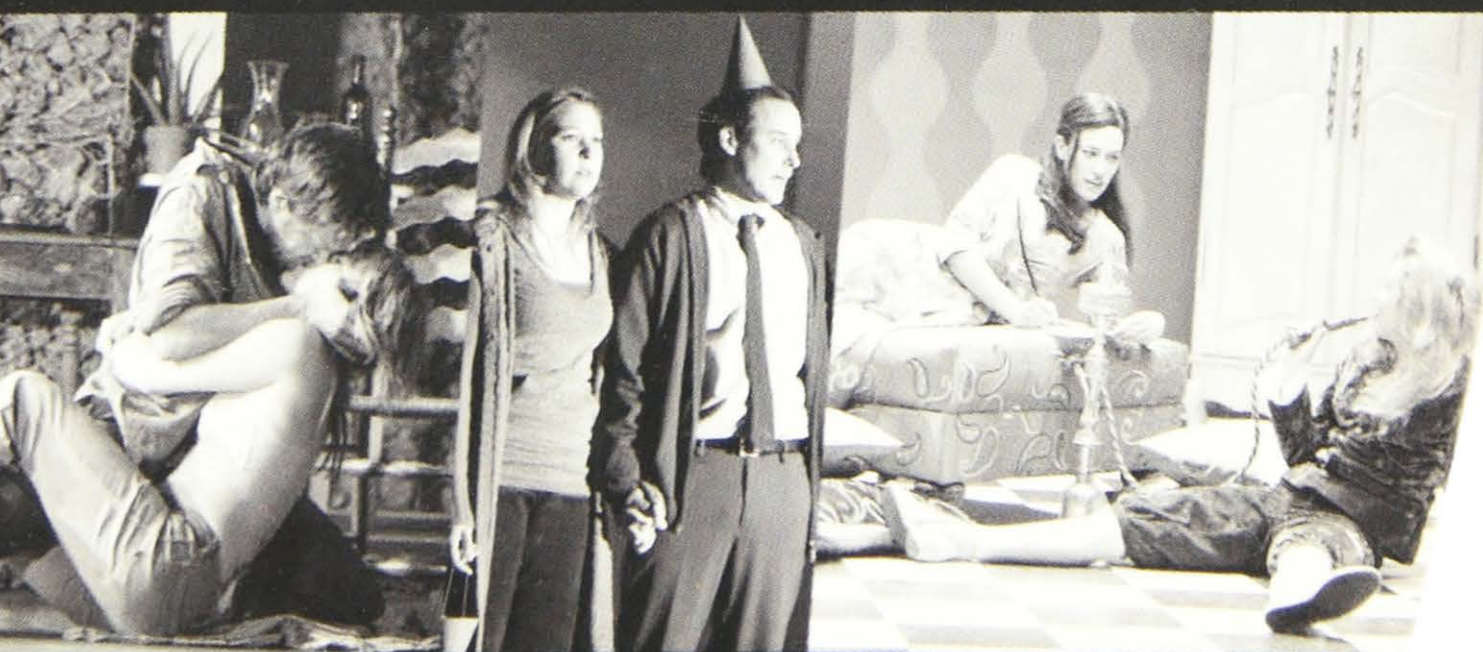
That, was not a traditional play! As bad as it gets. It was wonderful and thought provoking. There were some sparkling, precious tidbits throughout this play but if someone dumps a can of garbage on you, it is difficult to pick out a nice piece of cake from it all. Downright disturbing. Everyone needs to have this kind of theater experience. Even if they come out not liking it, I think they will be glad that saw it. We talked about the play for days....hmmmmm.

What will YOU think?
APRIL 21–MAY 7 **siti.org**



Theater Women's ^ Project

delivers compelling theater,
innovative programs, and electric events
as the Nation's oldest and largest company
dedicated to producing and promoting
theater created by women.



Photos by Carroll Rosegg. Top row from left to right: *Or*, with Kelly Hutchinson, Maggie Siff and Andy Paris; Joan Osborne on stage (photo by Sylvain Gaboury); *Smudge* with Greg Keller and Cassie Beck.

Bottom row from left to right: *Lascivious Something* with Rob Campbell and Dana Eskelson; *Smudge* with Cassie Beck and Greg Keller; *Or*, with Maggie Siff and Kelly Hutchinson.