

MARCH 1
33RD HUMANA FESTIVAL
OF NEW AMERICAN PLAYS
APRIL 11



made possible by a generous grant from

The
HUMANA
FOUNDATION

actors
actors theatre of louisville

2009

PUBLISHER
FEARLESS DESIGNS, INC.

EDITOR
KAY TULL

MANAGING EDITOR
AGGIE KEEFE

CREATIVE DIRECTOR
JEFF TULL

DESIGN
KAY & JEFF TULL
LEAH DIENES

PRODUCTION
AGGIE KEEFE
LEAH DIENES

SALES AND MARKETING
GEORGE E. SALES

PRINTING
CLARK & RIGGS PRINTING

COLOR SEPARATIONS
CLARK & RIGGS PRINTING

© COPYRIGHT 2009
FEARLESS DESIGNS, INC.

REPRODUCTION IN
WHOLE OR PART
WITHOUT WRITTEN
PERMISSION
IS PROHIBITED.

ACTORS THEATRE™
PROGRAM GUIDE
IS PUBLISHED BY
FEARLESS DESIGNS, INC.
622 E. MAIN STREET
SUITE 206
LOUISVILLE, KY 40202
502.581.9713
INFO@

THEAUDIENCEGROUP.COM
PRINTED IN USA



actors theatre of louisville

- 3** Welcome from Actors Theatre
- 4** Actors Theatre Boards
- 5** Underwriter
- 33rd annual Humana Festival
of New American Plays*
- 6** *Ameriville*
- 7** *Slasher*
- 8** *Absalom*
- 9** *The Hard Weather Boating Party*
- 10** *Under Construction*
- 11** *Wild Blessings: A Celebration of Wendell Berry*
- 12** *Brink!*
- 14** *Ten-Minute Plays*
- 16** Biographies
- 42** Executive Officers
- 43** Corporate Support
- 44** Individual Support
- 47** National Corporate Theatre Fund and
In-Kind Donations
- 48** Theatre Staff
- 50** Services & Amenities
- 52** The Gallery at Actors and Acknowledgments

ACTORS THEATRE IS THE STATE THEATRE OF KENTUCKY.

FOR MORE INFORMATION ON ADVERTISING IN THE ACTORS THEATRE
PROGRAM GUIDE, CONTACT GEORGE SALES AT 502.581.9713.

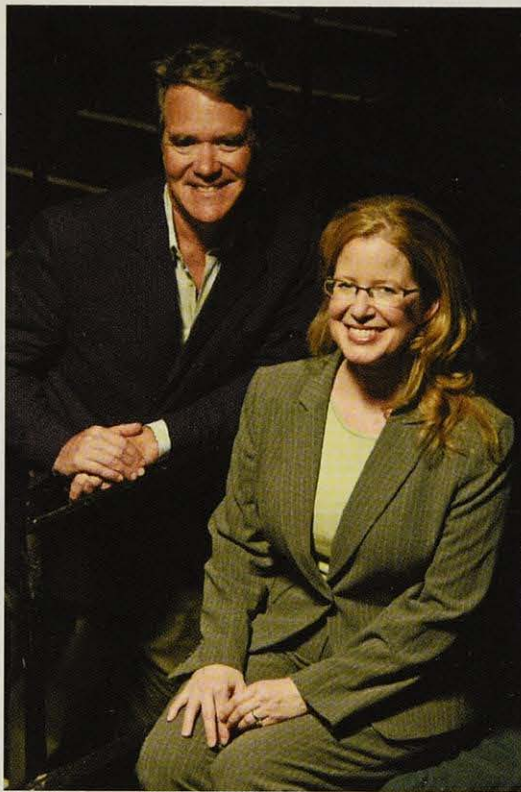
THE AUDIENCE GROUP PROVIDES PROGRAM GUIDES FOR:

- ACTORS THEATRE OF LOUISVILLE
- LOUISVILLE BALLET
- LOUISVILLE ORCHESTRA
- MUSIC THEATRE LOUISVILLE
- PNC BROADWAY ACROSS AMERICA – LOUISVILLE

E-MAIL: INFO@THEAUDIENCEGROUP.COM

ACTORS THEATRE: 502.584.1205 • www.actorsTheatre.org

WELCOME FROM ACTORS THEATRE



Now more than ever, America needs its theatre. As we face an uncertain future, the theatre offers a public space for people to come together and breathe the same air. Here is a place to tell our stories; to ask questions of ourselves, each other and the world; to be absorbed, engaged and mystified; or maybe just to share a laugh.

Each year, Actors Theatre enjoys the distinct privilege—and unique challenge—of launching a diverse body of new work into America's theatrical landscape. The 33rd Humana Festival of New American Plays features the work of both seasoned festival veterans and fresh voices. Our staff of artists and technicians has worked hard to bring their stories to life on stage. The result is a richly varied program that embraces an array of styles and aesthetics.

We thank The Humana Foundation for its generous and ongoing support, without which our work would not be possible. Their long-standing commitment to nurturing the arts is commendable and ensures that the festival will continue to thrive in the years to come. We salute the nineteen innovative playwrights who, with singular vision and stirring voices, are the true architects of the festival. Welcome, now, to our audiences: your presence here completes the circle, the final fulfillment of a journey that began with words on paper.

Marc Masterson
Artistic Director

Jennifer Bielstein
Managing Director

ACTORS THEATRE BOARDS

BOARD OF DIRECTORS

president Paul T. Costel	Tom Aronson Patricia W. Ballard Robert P. Banks Turney P. Berry Owsley Brown II Jeffrey P. Callen, MD C'allen Chauvin Greg Clark	Laura Douglas* Sarah D. Fuller Bruce J. Goodman Tyson Gorman Kevin Grangier Kaelyn Hardy † Mary Laura Heine- Crawford John Gill Holland, Jr.* Chase Kirkwood Paul A. Klein* Angie McDonald- Hackett	Boyce F. Martin III* Marilee Hebert Miller Thomas W. Mueller Theodore A. Nixon Bob Saunders† Matt B. Schwartz* Edward P. Seigenfeld Stephen E. Stowers Allan Tasman, MD John L. Tate* Roanne H. Victor
president-elect Michael J. Keyes	Mary Beth Clark † Terry Conway † Elizabeth W. Davis		
vice president Carolle Jones Clay	Sarah H. Dilger Nancy Doctor		
treasurer Bruce C. Merrick			
secretary Ms. Stewart Lussky			

*Executive Committee
†Ex Officio

ADVISORY COUNCIL

Carolee Allen James B. Appleberry Lynn Ashton Louann Atlas Irving W. Bailey Stanley Bayersdorfer Karen Bearden Fran L. Berg Winfrey Blackburn, Jr. Neville Blakemore, Jr. Cornelia W. Bonnie John J. Buchino, MD	Mary Beth Clark William W. Crawford, Jr. Stan Curtis Irwin H. Cutler, Jr. Frank P. Doheny, Jr. Gayle S. Dorsey Jane Driskell Douglass Farnsley Mrs. Harry S. Frazier, Jr. Clarence E. Glover Jack Guthrie Ian Y. Henderson	Frank B. Hower, Jr. Christine Johnson David A. Jones, Jr. David Klein David M. Krebs Nana Lampton Helen W. MacKinnon Eleanor Bingham Miller Mimi Middleton Osborn Steven J. Paradis Donna King Perry Roseanne Reed, Ph.D.	Benjamin K. Richmond Donna Burks Sanders Rev. Alfred R. Shands W. Kennedy Simpson Kathi Stearman Sherry Steinbock William M. Street Amanda Foard Tyler Karl N. Victor, Jr. Ann C. Wells Jessica White
---	---	--	---

ACTORS ASSOCIATES BOARD

president Terry Conway	vice president for fundraising Paul Bergmann	financial secretary Mary Korfhage	Caroline Martinson Marilee Miller Barbara Nichols Sharon Pearman Sharen Peckham Sheldon Rifkin Bob Silva Judy Silva David Wallace Beth Welch Bill Young
president elect Betty Combs	vice president for hospitality Deb Riall	secretary Cyndy Mazer	
immediate past president Patti Slagle	vice president for service Pat Koebel	Elizabeth Bergmann Dana Cooley Jack Francis Sarah D. Fuller Tom Gerstle Rebecca Grau George Kisslinger	
vice president for communications Rita Bell	treasurer Doris Elder		

GENERATION ONE BOARD

president Kaelyn Hardy	chairperson Gretchen Davis	treasurer Melany Wessels	Steven Bowling Marjorie Farris Patrick Gallagher Molly Glaser Rebecca Grau	Steven Gray, MD Melony Lane Josh Lindley Jeremy Rogers
president elect Greg Clark	secretary Elizabeth Scott	executive committee Scott Barber		

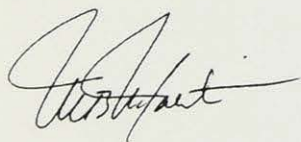
UNDERWRITER

A play is a suspension of time, a delicacy of art to be tasted again and again, often gaining reputation with each performance. But to debut a new play, to release it for the first time to an audience who holds no expectation from previous showings, takes risk. It is an honorable challenge for any theatre company to create a world on stage that is, essentially, born through their production. To launch and then sustain a festival of new plays for thirty-three years is a feat of innovation and courage.

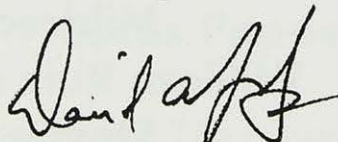
Now in its fourth decade of continuous support, The Humana Foundation is honored to underwrite the 2009 Humana Festival of New American Plays. With some plays going on to productions in New York and theatres around the world, it is no surprise that this event is often referred to as the preeminent new play festival in the country. Actors Theatre has helped bring Louisville a distinctive reputation for original art and culture unsurpassed in the United States.

We congratulate Actors Theatre and its Artistic Director, Marc Masterson, and applaud all the playwrights, actors, directors and audiences who will be participating in this 33rd year of the Humana Festival of New American Plays.

The Humana Foundation is a proud sponsor of this year's festival as it presents a new generation of bold and exciting theatre. Savor the experience and enjoy the show!



Michael B. McCallister
President and CEO, Humana Inc.
Chairman, The Humana Foundation



David A. Jones, Jr.
Chairman of the Board
Humana Inc.

Made possible by a generous grant from

The
HUMANA
FOUNDATION

Guidance when you need it most



Find Relief With

AllergyZone

The Furnace Filter for
Allergy Sufferers

www.allergyzone.com



actors theatre of louisville presents
33rd annual Humana Festival of New American Plays
made possible by a generous grant from The Humana Foundation

in association with SITI Company

Under Construction

by **Charles L. Mee**
directed by **Anne Bogart**
created and performed by **SITI Company**

THE CAST

(in alphabetical order)

Akiko Aizawa*
J. Ed Araiza*
Leon Ingulsrud*
Ellen Lauren*
Tom Nelis*
Barney O'Hanlon*
Makela Spielman*
Samuel Stricklen*
Stephen Duff Webber*

*America in the fifties and the present, the red states and the blue states,
where we grew up and where we live today.*

There will be no intermission.

Presented by special arrangement with International Creative Management, Inc.

Scenic Designer	Neil Patel
Costume Designer	James Schuette
Lighting/Video Designer	Brian H Scott
Sound Designer	Darron L West
Properties Designer	Mark Walston
Musical Arranger	Rachel Grimes
Stage Manager	Elizabeth Moreau*
Production Assistant	Dave Sleswick
Dramaturg	Sarah Lunnie
SITI Executive Director	Megan Wanlass Szalla

*Member of Actors' Equity Association, the union of professional actors and stage managers of the United States.

Presented in association with SITI Company with support from the Andrew W. Mellon Foundation, New York Theater Program, administered by the New York Foundation for the Arts and the National Endowment for the Arts. The Guthrie Theater provided early development support of this project. The script was posted on the internet and people were invited to contribute to scenes from the play although none have been incorporated into the final script.

PLAYWRIGHTS



WENDELL BERRY (*Wild Blessings*) was born in Henry County, Kentucky, in 1934. He holds a B.A. and M.A. from University of Kentucky. Mr. Berry has taught at Georgetown College, Stanford University,

New York University and his alma mater. The author of over 40 books of poetry, essays and fiction, Mr. Berry has been the recipient of numerous awards, including the Guggenheim Foundation Fellowship, Rockefeller Foundation Fellowship, National Institute of Arts and Letters Award, American Academy of Arts and Letters Jean Stein Award, Membership in the Fellowship of Southern Writers, John Hay Award and Cynthia Pratt Laughlin Medal from The Garden Club of America. He lives and works with his wife, Tanya Berry, on their farm in Kentucky.



GAMAL ABDEL CHASTEN (*Ameriville*), founding member of UNIVERSES, is a songwriter/poet/screenwriter. His work has toured more than 25 U.S. cities and 5 countries. Theatrical writing credits include

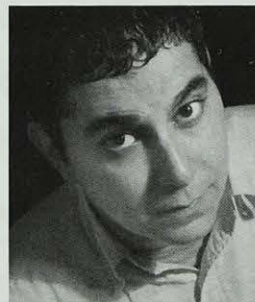
The Last Word, *God Took Away His Poem* and the UNIVERSES shows *The Ride* and *Slanguage*. Directing credits include *The Last Word*, Full Circle's *Innerviews* (Dance Theater Workshop) and *Articulation*. Mr. Chasten is currently working on several screen projects, including *Red Moon*, *Joe Blow* and *North Borough*. He appeared with UNIVERSES on the cover of *American Theatre* magazine (2004) and *Source* magazine (2000). He was also part of the 2008 Jazz at Lincoln Center: Rhythm Road and is a member of NET (Network of Ensemble Theaters).



LYDIA R. DIAMOND's (*Brink!*) plays include *Stick Fly* (2008 Susan Smith Blackburn Finalist, 2006 Black Theatre Alliance Award for best play), *Voyeurs de Venus* (2006 Joseph Jefferson Award for best new

work, 2006 Black Theatre Alliance Award for best writing), *The Bluest Eye* (2006 Black Arts Alliance Image Award for best new play and 2008 AATE Distinguished Play Award), *The Gift Horse*

(Theodore Ward Prize, Kesselring Prize 2nd Place) and *Harriet Jacobs*. **Regional Theatre:** The Goodman Theatre, Steppenwolf Theatre Company, Long Wharf Theatre, Hartford Stage, McCarter Theatre Center, PlayMakers Repertory Theatre, Chicago Dramatists, Congo Square, MAAT Production Association of Afrikan Centered Theatre, True Colors Theatre Company and Company One. *Stick Fly* is published by NU Press and *The Bluest Eye*, *Gift Horse* and *Stage Black* with Dramatic Publishing. Ms. Diamond was a 2007 TCG/NEA Playwright in Residence at Steppenwolf Theatre Company and is on the faculty at Boston University.



KRISTOFFER DIAZ's (*Brink!*) plays include *Welcome to Arroyo's* (developed/presented at Donmar Warehouse, Summer Play Festival, Lark Play Development Center, Hip-Hop Theatre Festival, Queens Theatre

in the Park, South Coast Repertory, The Tank and New York University), *The Trophy Thieves: A High School Love Story* (New York University and The Gallery Players; published by Playscripts), *Guernica* (Manhattan Theatre Source and New Dramatists; 2006 O'Neill Playwrights Conference semi-finalist) and *The Elaborate Entrance of Chad Deity* (Victory Gardens, Summer Play Festival Alumni Reading Series and Lark Play Development Center; 2008 O'Neill Playwrights Conference finalist). *Welcome to Arroyo's* will be published in 2009 as part of *Across All Lines*, the first major anthology of hip-hop theatre. Awards include the Van Lier Fellowship (New Dramatists), Donmar Warehouse Playwright Residency and the 2008 National Latino Playwriting Award.



ALEX DREMANN (*On the Porch One Crisp Spring Morning*) lives in Philadelphia, where he is the producing artistic director for Secret Room Theatre. His plays include *Postcoital Variations* (Philadelphia Theatre

Workshop), *Split Pea Pod* (Brick Playhouse; Roger Cornish Award) and the shorts *Third-First Person* (2007 Provincetown Theater Playwrights Festival), *Hypothermia* (Madcap Players) and *The Cheever Tapes* (Killing My Lobster). Two collections of his short plays have been produced by Theatre Neo in Los Angeles: *Bipolar by Thursday* and *Scream Into*

My Breasts. Mr. Dremann wrote for the sketch comedy troupe SKITSoid from 2004 through 2005 and holds an M.F.A. in playwriting from University of South Carolina.



ZOE KAZAN (*Absalom*) is an actor and writer, born in Santa Monica, Calif., and currently residing in Brooklyn, N.Y. As an actor, her Broadway credits include *The Seagull* and *Come Back, Little Sheba*. Off-Broadway

she appeared in *Things We Want*, *100 Saints You Should Know* and *The Prime of Miss Jean Brodie*. Ms. Kazan was a recipient of the Clarence Derwent Award in the 2007-2008 season. This play, her first, was workshopped at Lincoln Center Theater LAB and had readings at The Vineyard Playhouse, The Ensemble Studio Theatre and Yale University.



GREG KOTIS (*Brink!*) wrote the book and co-wrote the lyrics for *Urinetown (the Musical)*, for which he received an Obie Award and two Tony Awards. He also wrote the book and co-wrote the lyrics for the new

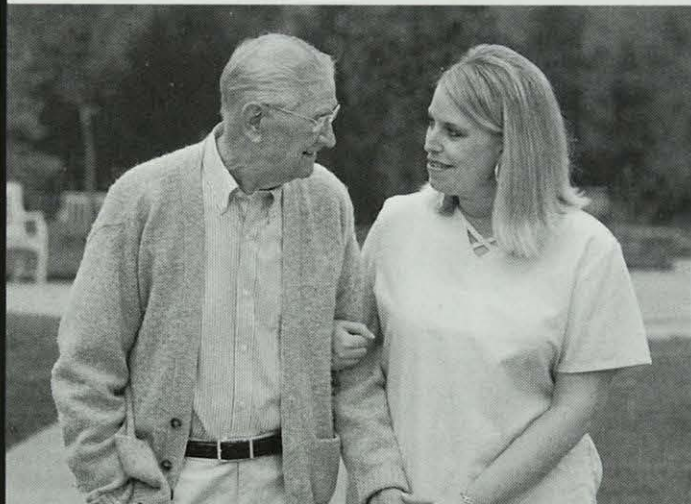
musical *Yeast Nation (the triumph of life)*, which received its world premiere last winter at Perseverance Theatre Company in Juneau, Alaska. *Yeast Nation* will receive its lower 48 premiere this coming spring at Chicago's American Theater Company. His new holiday offering, *The Truth About Santa (an apocalyptic Christmas tale)*, opened this past winter in New York. Other plays include *Jobey and Katherine*, *Eat the Taste* and *Pig Farm*. Mr. Kotis lives in Brooklyn with his wife, Ayun Halliday, and his children, India and Milo.



DEBORAH ZOE LAUFER's (*Brink!*) play *End Days* received the 2007 ATCA/Steinberg New Play Citation. It premiered at Florida Stage, as did *The Last Schwartz* and *The Gulf of Westchester*. Samuel French

published *End Days*, *The Last Schwartz* and *Out of Sterno*. *The Last Schwartz* appeared in *Women Playwrights: The Best Plays of 2003* and recently enjoyed a six-month run at Zephyr Theatre in Los Angeles. *Out of Sterno* is receiving its world premiere at Portland Stage Company, Maine. Her other plays, *Fortune*, *Random Acts* and *Miniatures*, have received productions and workshops around the country. Ms. Laufer is a Juilliard graduate, a two-

*Getting you back to
Your Life is
Our Passion.*



Jefferson
PLACE

502.426.5600

Health & Rehabilitation Center

Student rentals . . . to STEINWAY

TRY Gist

PIANO CENTER
• TRUSTED IN KENTUCKY •

. . . for EXPERT help .

SERVICE

ESTIMATES

APPRAISALS

REFINISHING

STORAGE

MOVING

RENTALS

SALES

Home of
STEINWAY

451-1831
(800)451-1831

gistpiano.com

Louisville • Lexington

Steinway • Boston • Essex • Knabe • Samick • others
NEW • USED • RENT or LEASE to OWN

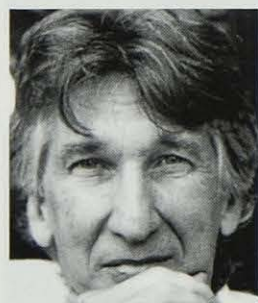


A history of serving the Kentucky Center and Louisville Orchestra

time recipient of the LeCompte du Nouy Award from The Lincoln Center Foundation and a Dramatists Guild member.



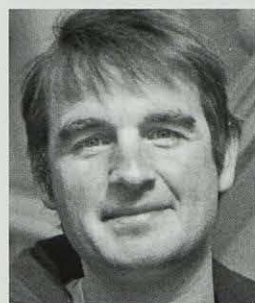
MICHAEL LEW's (*Roanoke*) plays include *A Better Babylon* (Ensemble Studio Theatre and Victory Gardens workshops); *Stockton*; *Yit, Ngay* (published in *Plays and Playwrights* 2006); and *Moustache Guys*. His shorts include *Tenure* (24 Hour Plays on Broadway), *In Paris You Will Find Many Baguettes but Only One True Love* (2008 Humana Festival Heideman Award), *Keep Truckin'* (The Atlantic), *The Roosevelt Cousins* and *Thoroughly Sourced* (Sam French Festival Winner/publication) and *Magician Ben vs. the Wizard Merlin* (Smith & Kraus publication). He received a Theatre Communications Group Young Leaders of Color Fellowship and a Sloan Foundation commission and works for New Dramatists. Writing residencies include Youngblood (Ensemble Studio Theatre) and Ma-Yi Writers' Lab. Mr. Lew was a Westinghouse finalist for his work on homeobox genes and graduated from Yale College in 2003.



CHARLES L. MEE (*Under Construction*) has written *Big Love* (2000 Humana Festival), *True Love*, *First Love*, *bobrauschenbergamerica* (2001 Humana Festival), *Vienna: Lusthaus*, *Orestes 2.0*, *Trojan Women: A Love Story*, *Summertime* and *Wintertime*, among other plays, all of them available online (www.Charlesmee.com). Among other awards, he is the recipient of the lifetime achievement award from the American Academy of Arts and Letters. His work is made possible by the support of Richard B. Fisher and Jeanne Donovan Fisher.



ALLISON MOORE (*Slasher*) is a displaced Texan living in Minneapolis, where she is a 2007-2009 Bush Artist Fellow and a 2008-2009 McKnight Advancement Grantee. Her plays include *End Times* (Kitchen Dog Theatre; Dallas Critics Forum Award), *American Klepto* (Fresh Ink/Illusion Theater), *Hazard County* (2005 Humana Festival), *Split* (Guthrie Theater commission), *Urgent Fury* (2003 Cherry Lane Mentor Project; Mentor: Marsha Norman) and *Eighteen* (2001 O'Neill Playwrights' Conference). Ms. Moore is a two-time The Playwrights' Center Jerome Fellow and two-time McKnight Fellow. Her new adaptation of Willa Cather's novel, *My Ántonia*, for Illusion Theater will be produced in their 2009-2010 season. Ms. Moore holds a B.F.A. from Southern Methodist University and an M.F.A. from University of Iowa's Playwrights Workshop.



PETER SINN NACHTRIEB (*Brink!*) is a San Francisco-based playwright whose works include *boom*, *Hunter Gatherers*, *Colorado* and *The Amorphous Blob*. *Hunter Gatherers* received the American Theatre Critics

Association/Steinberg New Play Award and the Will Glickman Prize (2007). His work has been seen at Ars Nova, Summer Play Festival, Woolly Mammoth Theatre Company, Seattle Repertory Theatre, Cleveland Public Theatre, Brown/Trinity Playwrights Repertory Theatre, Bailiwick Repertory Theatre, Wellfleet Harbor Actor's Theatre, Dad's Garage Theatre Company, The Magic Theatre, Killing My Lobster and Impact Theatre in the Bay Area. His newest play, *T.I.C.*, premieres with Encore Theatre Company in 2009. He is currently under commission from South

EDENSIDE GALLERY

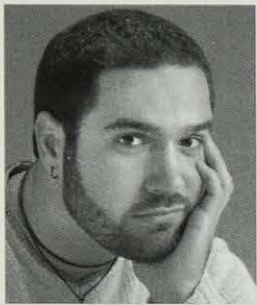


ART ★ JEWELRY ★ GIFTS
1422 BARDSTOWN ROAD 459-2787

10 Best of Louisville AWARDS



Coast Repertory and a resident playwright at Playwrights Foundation. Mr. Nachtrieb holds a B.A. in theatre and biology from Brown University and an M.F.A. from San Francisco State University.



MARCO RAMIREZ (3:59am: a drag race for two actors) has had plays produced at The Kennedy Center, The Yellow Tree, City Theatre and Mad Cat and he received Actors Theatre of Louisville's Heideman Award

in 2006 for his piece *I am not Batman*. He's the two-time winner of the Latino Playwriting Award from The Kennedy Center's American College Theatre Festival and a graduate of New York University's Tisch School of the Arts. Mr. Ramirez is currently studying playwriting at The Juilliard School.



MILDRED RUIZ (Ameriville), UNIVERSES founding member, is a playwright/actor/vocalist. Credits include *The Denver Project* (Curious Theater; dir. Dee Covington), *One Shot in Lotus Position* (The War

Anthology—Curious Theater; dir. Bonnie Metzgar), *Blue Suite* (dir. Chay Yew), *Rhythmicity* (Humana Festival 2001), *Slanguage* (New York Theater Workshop; dir. Jo Bonney), *The Ride* (dir. Steven Sapp) and Alfred Jarry's *UBU:Enchained* (Teatre Polski in Poland; dir. Steven Sapp). She was also part of the 2008 Jazz at Lincoln Center: Rhythm Road; recipient of the TCG Peter Zeisler Award (2008), TCG National Directors Award (2002), Career Advancement Fellowship (Ford Foundation) through Pregones Theater (2006), TCG National Theatre Artist Residency Program Award (2002-2004 and 1999-2001) and BRIO (Bronx Recognizes Its Own) Awards; and Board member National Performance Network (NPN) and the Network of Ensemble Theaters (NET).



WILLIAM RUIZ A.K.A NINJA (Ameriville) was born and raised on the Lower East Side of Manhattan. Acting credits include UNIVERSES' *Slanguage*, Jack Kerouac's *Ti Jean Blues*, Nicole Quinn's *Tree*

Tails, Oscar Wilde's *Salome*, Anthony Rivera's *Latin Howel* and Nicky Cruz's *Run Baby Run* (Houston Astro Dome, Texas). He was both playwright and director of *Waiting for Gordo* (an adaptation of Samuel Beckett's play). Mr. Ruiz was also part of

Firm Commitment

...to our Community



WOODWARD, HOBSON
& FULTON, L.L.P.

Louisville Office

101 S. Fifth Street
2500 National City Tower
Louisville, Kentucky 40202
Phone: (502) 581-8000

Lexington Office

200 West Vine Street, Fifth Floor
PO Box 1720
Lexington, Kentucky 40588
Phone: (859) 244-7100

www.whf-law.com

the 2008 Jazz at Lincoln Center: Rhythm Road as Ambassador of Music and a member of NET (Network of Ensemble Theatres). Mr. Ruiz received his B.A. in theatre from Bard College, where he studied under JoAnne Akalaitis and Elizabeth Smith and learned poetry under the tutelage of Bob Holman.



STEVEN SAPP (Ameriville), UNIVERSES founding member, has worked on the collaborations *The Denver Project* and *One Shot In Lotus Position* (Curious Theater), *Blue Suite*, *Rhythmicity* (2001 Humana

Festival) and *Slanguage* (New York Theater Workshop). His directing credits include *The Ride* (assistant), *The Architecture of Loss*, Will Powers' *The Seven* (University of Iowa) and Alfred Jarry's *UBU:Enchained* (with Teatre Polski, Poland). He toured with Jazz at Lincoln Center: The Rhythm Road and was the recipient of TCG's Peter Zeisler Award (2008), National Directors Award (2002) and their National Theater Artist Residency Program Award (2002 to 2004 and 1999 to 2001). He also received a Van Lier Fellowship with New Dramatists. Mr. Sapp is co-founder of The Point and holds a B.A. from Bard College.



MATT SCHATZ (*Roanoke*) is a New York-based playwright and songwriter. He is the author of many plays and musicals, including *The Tallest Building in the World* (Ensemble Studio Theatre/Sloan

Commission), *Co-op* (Ensemble Studio Theatre; book by Courtney Brooke Lauria), *Before The Moment* (2008 AFI/Sloan Summit; book by Jihan Crowther) and the short Obama musical *Pinning Hope* (commissioned and produced by Creative Destruction). Mr. Schatz is an alumnus of Youngblood at Ensemble Studio Theatre and is a current member of the BMI Musical Theater Workshop and Interstate 73 Writers Group at Page 73 Productions (2008 P73 Fellowship finalist, 2009 semi-finalist). Mr. Schatz holds an M.F.A. from Carnegie Mellon University and currently has a grant to write the book, music and lyrics for an original full-length musical from Ensemble Studio Theatre/Sloan.



DEBORAH STEIN's (*Brink!*) plays have been produced/developed at Seattle Repertory Theatre, Guthrie Theater, Women's Project & Productions, The Wilma Theater, The Playwrights'

Center, Red Eye Theater, Live Girls Theater, Dance Theater Workshop and Project Artaud Theater; and internationally in Poland, Ireland, Edinburgh (Traverse Theatre) and Prague. She collaborated with Pig Iron Theatre Company on six new works, including *Shut Eye* (dir. Joseph Chaikin), and was twice nominated for the Barrymore Award for best new play. Her writing is published in *TheatreForum*, *Play: A Journal of Plays* and *The Best American Poetry of 1996*. Commissions include Guthrie Theater, The Children's Theatre Company and the EST/Sloan Project. Ms. Stein holds an M.F.A. from Brown University and is a two-time Jerome Fellow at The Playwrights' Center and member of New Dramatists. Upcoming productions include *Wallflower* (Stages Repertory Theatre) and *God Save Gertrude* (The Theatre @ Boston Court).



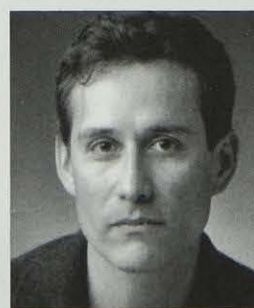
NAOMI WALLACE's (*The Hard Weather Boating Party*) work has been produced in the United Kingdom, Europe, the Middle East and the United States. Her major plays include *One Flea Spare* (1996 Humana

Festival), *In the Heart of America*, *The Trestle at Pope Lick Creek* (1998 Humana Festival), *Things of Dry Hours* and *The Fever Chart: Three Visions of the Middle East*. Ms. Wallace received the Susan Smith Blackburn Prize, Kesselring Prize, Fellowship of Southern Writers Drama Award and an Obie Award. She was also a recipient of the MacArthur Fellows Program Award. Her award-winning film *Lawn Dogs* is available on DVD and her new film, *The War Boys* (co-written with Bruce McLeod), will be released in 2009. Ms. Wallace is presently under commission from Oregon Shakespeare Festival, The Public Theater and Clean Break of London.

THE ACTING COMPANY



AKIKO AIZAWA (Ensemble—*Under Construction*) With SITI Company she has performed *Freshwater*, *Who Do You Think You Are*, *Radio Macbeth*, *Hotel Cassiopeia* (2006 Humana Festival), *bobrauschenbergamerica* (2001 Humana Festival), *A Midsummer Night's Dream*, *Intimations for Saxophone*, *La Dispute*, *War of the Worlds* (2000 Humana Festival), *Culture of Desire*, *Nicholas and Alexandra* and *systems/layers*. Theatre festivals include BAM/Next Wave Festival, Ice Factory at the Ohio Theatre, Under the Radar at the Public Theatre, Alabama Shakespeare Festival, American Repertory Theatre, Arena Stage, Court Theatre, Krannert Center, Los Angeles Opera, New York Theatre Workshop, Portland Stage, Walker Art Center, Wexner Center for the Arts and Women's Project. International festivals/venues include Edinburgh, Dublin, Bonn, Bobigny, Helsinki, Melbourne, Sydney, Canberra, Bogota, São Paulo, Santiago, Buenos Aires, Tokyo, Toga and Moscow.



J. ED ARAIZA's (Ensemble—*Under Construction*) SITI Company credits include *Who Do You Think You Are*, *Hotel Cassiopeia* (2006 Humana Festival), *A Midsummer Night's Dream*, *systems/layers*, *bobrauschenbergamerica* (2001 Humana Festival), *Culture of Desire*, *The Medium*, *Small Lives/Big Dreams*, *War of the Worlds* (2000 Humana Festival), *Keely and Du* (2000 Humana Festival), *1969* (1992 Humana Festival) and *Picnic* (2000 Humana Festival). **Regional Theatre:** *War of the Worlds—The Radio Play* (San Jose Repertory Company), *The Cure at Troy* (Yale Repertory; American premiere),

Santos and Santos (Mixed Blood Theatre), *Keely and Du* (Hartford Stage), *Yerma* (Arena Stage), *Principia Scriptoria* (A Contemporary Theatre), *Chaley Bacon*, (South Coast Repertory Theatre) and *King Lear*, *Macbeth* and *La Victima* (Los Angeles Theatre Center). Most recently directed *bobrauschenbergamerica* in Houston, Texas.



HELEN-JEAN ARTHUR

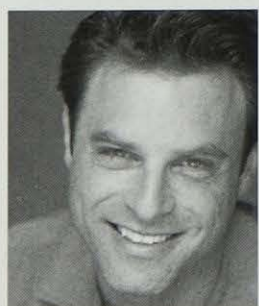
(Ensemble—*Wild Blessings*)

At Actors: Appeared in the epic *Food from Trash*.

Regional Theatre: *Juno and the Paycock* (Arena Stage), *Foxfire* (Guthrie Theatre), *The*

Glass Menagerie and *A Delicate Balance*, among many others. **Broadway/Off-Broadway:** Dozens of plays, including the New York premiere of Tom Stoppard's *Indian Ink* and the original productions of *A Lie of the Mind* and *Sister Mary Ignatius Explains It All for You*. Ms. Arthur was on daytime's *Loving* for years, and NPR listeners often hear her read on *Selected Shorts*. Her specialties are playing first violin in several orchestras and performing as soloist in the repertoire for spoken voice with orchestra. She tours and travels widely, most recently to Antarctica, India, Australia and Cuba.

GAMAL ABDEL CHASTEN (Ensemble—*Ameriville*) Please see Playwrights biographies, page 16.



J ANTHONY CRANE (Cole Maddox—*Absalom*)

Regional Theatre: *Sight Unseen* (The Old Globe), *All My Sons* (Two River Theater), *The Last Night of Ballyhoo* (Canon Theatre) and *The Glass*

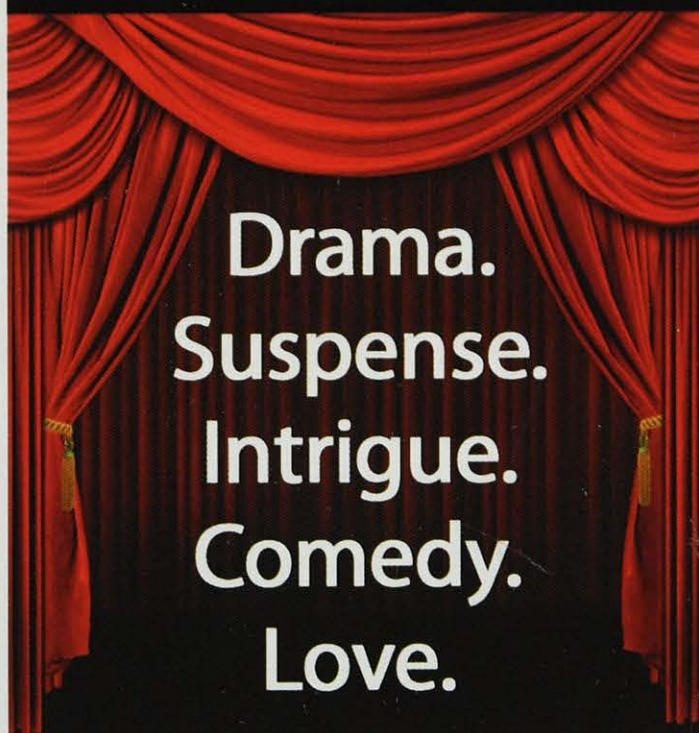
Menagerie (Pasadena Playhouse). **Broadway:** *Sight Unseen* (Manhattan Theater Club) and *Butley* (Booth Theater; with Nathan Lane). **Off-Broadway:** *Modern Orthodox* (dir. by James Lapine), *Relativity* (Ensemble Studio Theater) and *The Brothers Karamazov* (LaMama E.T.C.). **Film:** *March*, *Simone*, *Dying on the Edge* and *Bite*.

Television: Numerous appearances, including *Life on Mars*, *The Practice*, *Ugly Betty*, *Judging Amy*, *Third Watch*, *JAG*, *Six Degrees*, *Frasier*, *CSI* and the series lead in USA's *The Big Easy*. **Other**

Theatre: *Our Country's Good*, *The Recruiting Officer*, *Twelfth Night*, *Long Day's Journey Into Night*, *Closer* and *The Scarecrow*. Mr. Crane holds a B.A. from Northwestern University in theatre.

Semonin

REALTORS



Happy Endings.

**Find your role in
a NEW HOME.**

You can find the home that meets your needs online. Thousands & thousands of buyers prefer www.semonin.com to look for a home every day. With **MORE THAN A DOZEN** custom search functions, user friendly features and tools: detailed property information, multiple photos, virtual tours, mortgage information, mapping and more - buyers stay on www.semonin.com longer and view more homes that meet their criteria.

www.semonin.com

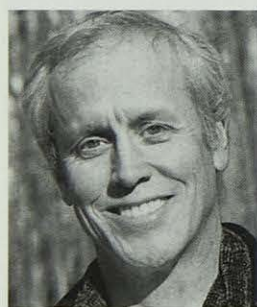
www.semonin.tv





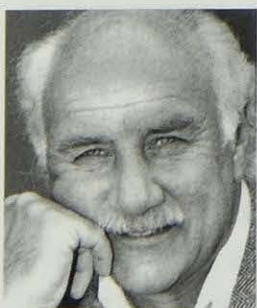
MICHAEL CULLEN (Stadden Vance—*The Hard Weather Boating Party*) **Regional Theatre:** *Orphans* (Penguin Repertory), *Twelve Angry Men* (Buffalo Studio Arena) and *Stories of Eva Luna* (Denver

Center Theatre Company). **Broadway:** *Bus Stop* (Circle in the Square). **Off-Broadway:** *Bug* (Barrow Street Theatre; Obie Award), *The Intelligent Design of Jenny Chow* (Atlantic Theater Company), *Len Asleep in Vinyl* (Second Stage Theater), *Cobb* (Lucille Lortel Theater; Drama Desk Award) and *Dark Matters* (Rattlestick Theater). **Film:** *Margot at the Wedding*, *Dead Man Walking*, *Malcolm X* and *Clockers*. **Television:** *Law & Order*, *Law & Order: SVU*, *Law & Order: CI* (NBC); *Ed* (NBC); *New York Undercover* (Fox); and *Life on Mars* (ABC).



MALCOLM DALGLISH (Ensemble—*Wild Blessings*) is a hammer dulcimer player and composer whose work draws on his background in choir, theatre and folk music. He has over 14 recordings on Windham Hill,

Rounder and other labels. *Into the Sky*, *Hymnody of Earth* and *Pleasure* feature the poetry of Wendell Berry. He has over eighty commissioned works for choirs worldwide and runs an outdoor singing camp in the summer. He attended Cincinnati Conservatory of Music and acted in a resident Oberlin College theatre company with Herbert Blau, Bill Irwin and Julie Taymor. His solo, *Wild, Wild, Word Show*, ran at Cincinnati Playhouse and other theatres nationwide. His operetta, *Free Range, A Baseball Dream*, toured China in 2008. Performances include Carnegie Hall, Avery Fisher Hall, Smithsonian, the Kennedy Center and NPR's *Prairie Home Companion*.



PETER MICHAEL GOETZ (Solomon Weber—*Absalom*) **At Actors:** *The Pink Studio*.

Regional Theatre: Over 100 productions at Guthrie Theater, three seasons at The O'Neill Festival, three seasons with

Berkshire Theatre Festival, Sundance Festival, Westwood Playhouse, Abbey Theatre (Dublin, Ireland), Seattle Repertory Theatre, Coconut Grove Playhouse, Geffen Playhouse, Ahmanson Theatre, Hudson Guild Theatre, American Place Theater, Long Wharf Theater and Circle in The Square. **Broadway:** *Macbeth*, *Sex and Longing*, *Beyond Therapy*, *Ned and Jack*, *The Queen and the Rebels*, *Brighton Beach*

Memoirs, *Government Inspector* and *The Last Night of Ballyhoo*. **Film:** *Jumpin' Jack Flash*, *The World According to Garp*, *Prince of the City*, *Dad, My Girl*, *Wolfen*, *Another You*, *Beer*, *Glory*, *Best Defense* and *Father of the Bride* movies with Steve Martin (father of the groom). **Television:** *AfterM*A*S*H**, *The Cavanaughs*, *Room for Two* and *The Faculty*.



BEN HUBER (Teddy Weber—*Absalom*) **Regional Theatre:** *Eurydice* (The Wilma Theater), *The Tempest* and *King Lear* (Seattle Shakespeare Company), *Richard II*, *As You Like It* and *Ring Round the Moon*

(American Players Theatre) and *Crimes of the Heart* and *Macbeth* (Tacoma Actor's Guild). **Off-Broadway:** *A Midsummer Night's Dream* (New York Shakespeare Festival/The Public Theater), *Yellowface* (u/s) (The Public Theater) and *Perfect Harmony* (Theater Row). **Film/Television:** *First Aid For Choking* (ETC Films) and a recurring role on *Lipstick Jungle* (NBC). **Additional Credits:** Mr. Huber holds an M.F.A. from New York University/Tisch School of the Arts Graduate Acting Program.



LEON INGULSRUD (Ensemble—*Under Construction*) helped found SITI Company. **At Actors:** *bobrauschenbergamerica* (2001 Humana Festival) and *Hotel Cassiopeia* (2006 Humana Festival). **Regional Theatre:**

Who Do You Think You Are, *Orestes* and *Seven Deadly Sins* (New York City Opera) and *Nicholas & Alexandra* (L.A. Opera). Previously, he was a Suzuki Company of Toga member for seven years. He was resident director at ATM Arts Center in Mito and associate artistic director of Swine Palace in Baton Rouge. Directorial credits include *Endgame*, *The Hairy Ape*, *Macbeth*, *Martini Ceremony*, *Medea*, *The Sea*, *The Grapes of Wrath*, *The Tempest*, *Death of a Salesman*, *Saint Joan*, *Our Town*, *Laramie Project*, *Eurydice*, *Psyche*, *Callie's Tally*, *Big Love*, *A Show of Force*, *Jamestown*, *Dr. Faust* and *Moby Dick*. Mr. Ingulsrud holds an M.F.A. in directing from Columbia University.



KEVIN JACKSON (Coyle Forester—*The Hard Weather Boating Party*) **Regional Theatre:** *Joe Turner's Come and Gone* and *The Tempest* (Center Stage), *Spunk* and *The Cider House Rules* (Mark Taper Forum; Garland and

Ovation Award for best featured actor), *The Playboy of*

the West Indies (Yale Repertory Theatre), *The Piano Lesson* (Denver Theatre Center) and *Poke County* and *Spunk* (Berkeley Repertory Theatre). **Broadway:** *Fences*, *Mule Bone* and the Pulitzer Prize-winning *Topdog/Underdog*. **Off-Broadway:** *Macbeth*, *The Caucasian Chalk Circle*, *References to Salvador Dali* *Make Me Hot*, *Dancing on Moonlight* and *Spunk* (New York Public Theatre; Obie Award for best ensemble). **Film:** *Rosewood*, *Brother to Brother* (Sundance-Special Jury Prize), *Hero*, *Bogus*, *MVP*, *Cadillac Records* and the soon-to-be-released *Killing Ruth*. **Television:** *Saving Grace* (TNT), *Without a Trace* (CBS), *The Shield* (FX), *Cold Case* (CBS), *ER* (NBC) and *The Colored Museum* (PBS-Great Performances).



STEPHANIE JANSSEN (Julia Grimes Weber—*Absalom*) **Regional Theatre:** Guthrie Theater. **Off-Broadway:** *Crimes of the Heart* (Roundabout, u/s), *Blackbird* (Manhattan Theatre Club, u/s), *Beirut Rocks* (Ensemble Studio Theatre Marathon), *The Secret of Mme. Bonnard's Bath* (New York Playwright's Lab at Theatre Row), *Museum* (Keen Company) and *Crave* (Potomac Theatre Project). Ms. Janssen wrote and acted in *The Umbrella Plays* (New York International Fringe Festival; Outstanding Play Award). **Television:** *Law & Order*. Ms. Janssen holds a B.A. from Middlebury College and an M.F.A. from New York University.



KATIE KREISLER (Sophia Weber—*Absalom*; Mother—*On the Porch One Crisp Spring Morning*; Melanie—*Roanoke*) **Regional Theatre:** *Haroun and the Sea of Stories* (Berkeley Repertory Theatre). **Broadway:**

Noises Off. **Off-Broadway:** *Psych* (Playwrights Horizons), *Gone Missing* (with The Civilians), *I'm In Love With Your Wife* (Midtown International Theater Festival; Best Supporting Actress of MITF 2007) and *Stalled* (co-writer; Upright Citizens Brigade New York/Los Angeles). **Film:** *Children of Invention* (premiered at Sundance 2009; dir. Tze Chun), *Full Grown Men* (premiered Tribeca Film Festival 2006; *IndieWIRE*/New York Times Undiscovered Gems 2007), *Approaching Union Square*, Merchant Ivory's *Heights* and Woody Allen's *Melinda and Melinda*. **Television:** *Medium*, *It's Always Sunny in Philadelphia*, *Without a Trace*, *Law & Order*, *Miss Match*, *The Job* and *Girlfriends*. Ms. Kreisler trained at The Juilliard School and will be in the upcoming production of Theresa Rebeck's *Our House* (Playwrights Horizons) in May 2009.



ELLEN LAUREN (Ensemble—*Under Construction*) is associate artistic director for SITI Company. **At Actors:** *Picnic*, *The Adding Machine*, *Miss Julie*, *The Medium*, *Cabin Pressure* (1999 Humana Festival), *Private Lives*, *Hay Fever*, *bobrauschenbergamerica* (2001 Humana Festival) and *Hotel Cassiopeia* (2006 Humana Festival). New York credits include New York City Opera, Classic Stage Company, New York Theater Workshop and BAM/Next Wave Festival. Additional festivals include Dublin, Bonn, Bogotá, Bobigny, Melbourne, Edinburgh and Singapore. **Regional Theatre:** ART Cambridge, San Jose Repertory Theatre, Milwaukee Repertory Theater and Alley Theatre. Ongoing member Suzuki Company, Japan, whose venues include Moscow Art Theatre, Taganka Theatre, RSC London, Istanbul Festival, Festival Mundial Chile, Teatro Olimpico Italy, Montpellier France and Hong Kong Festival. Ms. Lauren is a faculty member with Juilliard School of Drama and received a Fox Fellowship for distinguished achievement.



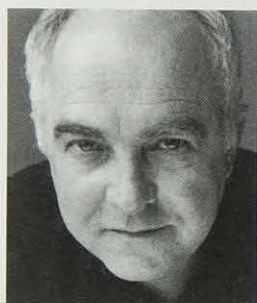
TRACEY CONYER LEE (Ensemble—*Wild Blessings*) **At Actors:** *Spunk* and *Hair* (dir. Jon Jory). **Regional Theatre:** *The Piano Lesson* (Delaware Theatre Company), *Dreamgirls* (Theatre of the Stars),

Lincolnesque (The Cleveland Play House), *A House With No Walls* (Interact Theatre); and numerous productions of *Constant Star* at Westport Country Playhouse, Delaware Theatre Company (seven Barrymore Awards), Laguna Playhouse (five NAACP Awards), Virginia Stage Company, Syracuse Stage and Florida Stage (two Carbonell awards). *Intimate Apparel* (Merrimack Repertory Theatre; TheatreWorks), *The Who's Tommy* (Pittsburgh CLO), *Permanent Collection* (Florida Stage) and *Everything's Ducky* (St. Louis Repertory; Cincinnati Playhouse in the Park). **Film/Television:** *Ed*, *Law & Order: CI*, *All My Children*, *Guiding Light* and *Sophisticated Romance* (award-winning independent feature).



CHRISTY MCINTOSH (Christi Garcia and others—*Slasher*) **Regional Theatre:** Clea in Theresa Rebeck's *The Scene* (Hartford Stage and George St. Playhouse), Kirsten Childs' *Funked Up Fairy Tales* (Barrington), Debbie in *Debbie Does Dallas: The*

Musical, Bat Boy, Louis Sachar's *Holes* and *The Last 5 Years*. **Off-Broadway:** Annie/Shelly in *Evil Dead: The Musical* and Becky Warder in Clyde Fitch's *The Truth, Elvis and Juliet* with Fred Willard. **Television:** *Law & Order: SVU*. **Other Theatre:** *The Road to Ruin* (NYMF), *One Way Ticket To Hell* (workshop directed by Josh Prince), *Pushkin* by Jonathan Leaf (workshop directed by Erica Gould) and *Snow White* in San Francisco's infamous *Beach Blanket Babylon*. Ms. McIntosh is a member of the sketch comedy troupe Honorable Mention.



LARRY JOHN MEYERS

(Ensemble—*Wild Blessings*) **At Actors:** *Glengarry Glen Ross*, *Gem of the Ocean*, *The Crucible* and both *The Shaker Chair* and *Pure Confidence* (2005 Humana Festival). **Regional Theatre:**

Alabama Shakespeare Festival, Berkeley Repertory Theatre, The Children's Theatre Company (Minneapolis), Dallas Theater Center, Huntington Theatre Company, La MaMa E.T.C., Syracuse Stage, Virginia Stage Company, Weston Playhouse Theatre Co. (Vermont); and at home in Pittsburgh for the Public, Irish Classical Theatre Company, City Theatre Company, Playhouse Repertory and Three Rivers Shakespeare Festival.

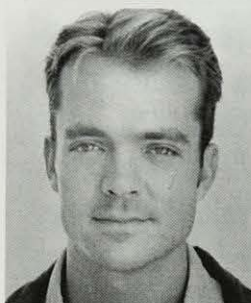
Film/Television: Over 30, including *American Splendor*, *Up Close & Personal*, *The Temptations*, *Runaway Train* and *Flashdance*. As an actor with an abiding love for literature, poetry and the art of the well-told story and with Wendell Berry long among his favorite writers, Mr. Meyers is truly honored to help offer this first theatrical tribute and celebration.



TOM NELIS (Ensemble—*Under Construction*) **At Actors:** *Great Falls* by Lee Blessing (2008 Humana Festival); *Score* (2002 Humana Festival); *War of the Worlds* (2000 Humana Festival; SITI Company);

Going, Going, Gone (1996 Humana Festival; SITI Company); and *Dancing at Lughnasa*. Other SITI Company shows include *Freshwater*, *A Midsummer Night's Dream*, *War of the Worlds—The Radio Play*, *The Medium* and *Orestes*. **Broadway:** *The Caine Mutiny Court Martial* and *Aida*. **Off-Broadway:** *Road Show* (The Public Theater), *Doris to Darlene* (Playwrights Horizons), *Ipheginia 2.0* (Signature Theater), *The Merchant of Venice* (Theater for a New Audience), *The Seven* (New York Theatre Workshop), *Laurie Anderson's Moby Dick* (BAM/New Wave Festival) and *Pearls for Pigs* (Richard Foreman). His awards include an Obie Award (*The*

Medium), San Diego Circle Critics Ensemble Award (*Wintertime*), Drama League Nomination (*Score*) and Barrymore Nomination (*Candide*). Mr. Nelis holds an M.F.A. from University of California, San Diego.



BARNEY O'HANLON

(Ensemble—*Under Construction*)

At Actors: Numerous Humana Festivals, including *Hotel Cassiopeia* (2006 Humana Festival), *bobrauschenbergamerica* (2001 Humana Festival), *Cabin*

Pressure (1999 Humana Festival), *War of the Worlds* (2000 Humana Festival; all with SITI Company), *1969* (1992 Humana Festival; dir. Tina Landau) and *Deadly Virtues* (1991 Humana Festival); *Small Lives/Big Dreams* (Actors' Modern Masters Festival; dir. Anne Bogart); and season productions of *Hamlet* (dir. Jon Jory), *Hay Fever* (dir. Anne Bogart) and *Floyd Collins* (choreography). **Regional Theatre:** American Repertory Theatre, Arena Stage, Portland Stage Company, Alabama Shakespeare Festival, San Jose Repertory Theatre, Court Theatre, Trinity Repertory Company, Alley Theatre and Steppenwolf Theatre Company.

Off-Broadway: *Freshwater* (dir. Anne Bogart). **Other Theatre:** Los Angeles Opera, New York City Opera, Glimmerglass Opera and Opera Omaha. Mr. O'Hanlon directed and choreographed *systems/layers*, a dance/theatre collaboration between SITI Company and Louisville-based band Rachel's. He is a longtime member of SITI Company.



LUCAS PAPAELIAS (Jody Joshi—*Slasher*) **Regional**

Theatre: *American Buffalo* and *Lobby Hero* (Geva Theatre Center), *While We Were Bowling* (Studio Arena) and *Dead End* (Huntington Theatre Company).

Broadway: *Cyrano de Bergerac*. **Off-Broadway:** *US Drag* (StageFarm), *Romeo & Juliet* (Public Theater), *Essential Self-Defense* (Playwrights Horizons; Drama Desk nomination), *Cyclone* (Studio Dante), *Walk Two Moons* (Lucille Lortel), *Smashing* (Play Company) and *Cellini* (Second Stage Theatre). **Film:** *School of Rock*, *Hungry Ghosts*, *WTC View*, *The Cake Eaters*, *What Alice Found* and *Brother to Brother*. **Television:** All four *Law & Order* series, *It's Always Sunny in Philadelphia*, *NYPD Blue*, *Queens Supreme* and *Avenue Amy*. Mr. Papaelias studied acting with Wynn Handman and holds a B.A. from SUNY Geneseo School of the Arts in theatre. He is a proud member of Actors' Equity Association.



JESSE J. PEREZ (Lex Nadal—*The Hard Weather Boating Party*) **Regional Theatre:** *The Arabian Nights* (Berkeley Repertory Theatre), *Argonautika* and *Lookingglass Alice* (Lookingglass Theatre

Company), *Pericles* (The Shakespeare Theatre and The Goodman), *Celebrity Row* (Portland Center Stage), *Hamlet* (McCarter Theatre Center), *Lulu*, *The Cherry Orchard* and *Taming of the Shrew* (Yale Repertory Theatre) and *A Midsummer Night's Dream* (American Repertory Theatre). **Off-Broadway:** *Triple Happiness* (Second Stage Uptown), *Recent Tragic Events* (Playwrights Horizons), *In the Penal Colony* (Classic Stage Company), *Up Against the Wind* (New York Theatre Workshop) and *The Adventures of Barrio Girl* (Summer Play Festival). **Film:** *American Splendor*, *All Night Bodega* and *Kazaam*. **Television:** *Life on Mars*, *Law & Order*, *Law & Order: SVU*, *Third Watch* and *The Job*.



PHIL PICKENS (Ensemble—*Wild Blessings*) **At Actors:** *I am not Batman*. and *The Open Road Anthology* (2007 Humana Festival); *A Christmas Carol*; and *Pizza Theology* (2007 Apprentice Company). **Other**

Theatre: *Landscape of the Body*, *Handler*, *The Last Night at Ballyhoo* and *Months on End*. **Additional Credits:** Mr. Pickens holds a B.F.A. in theatre performance from University of Evansville.



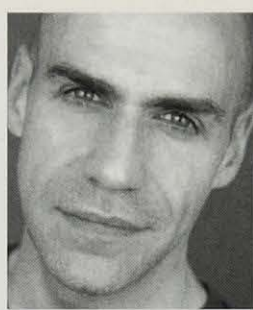
NICOLE RODENBURG (Sheena McKinney—*Slasher*) **Regional Theatre:** *The Merchant of Venice* and *The Taming of the Shrew* (Great River Shakespeare Festival) and *The End* (Guthrie Theater).

Other Theatre: *Distracted* (Mixed Blood Theater). **Additional Credits:** Ms. Rodenburg graduated from University of Minnesota/Guthrie Theater with a B.F.A. from the Actor Training Program.

MILDRED RUIZ (Ensemble—*Ameriville*) Please see Playwrights biographies, page 19.

WILLIAM RUIZ A.K.A. NINJA (Ensemble—*Ameriville*) Please see Playwrights biographies, page 19.

STEVEN SAPP (Ensemble—*Ameriville*) Please see Playwrights biographies, page 19.



MARK SETLOCK (Marc Hunter—*Slasher*) **Regional Theatre:** Huntington Theatre Company, Portland Center Stage and Repertory Theatre of St. Louis. **Broadway:** *Rent*. **Off-Broadway:** Outer Critics

Circle Award and Drama Desk nomination for *Fully Committed*, which he helped create with playwright Becky Mode and has performed in Los Angeles, Boston, Portland (Ore.), Bay Street Theatre and London's West End; *The Last Sunday in June*, *The Umbrella Plays*, *Roulette*, *Tea and Sympathy*, *The Safety Net* and *Never Tell*. Mr. Setlock co-wrote and performed in *Pageant Play* with Matthew Wilkas, which had its premiere production July 2008 at Berkshire Theatre Festival. **Film:** *New Suit* and *Life In Flight*. **Television:** *All My Children*, *Law & Order* and *Law & Order: CI*.



MAKELA SPIELMAN (Ensemble—*Under Construction*) **At Actors:** *Doubt*. **Regional Theatre:** *Radio Macbeth* (Court Theatre; SITI Company), *Doubt* (Cincinnati Playhouse in the Park), *The*

Crowd You're In With (Magic Theatre), *Intimations for Saxophone* (dir. Anne Bogart) and *The Miracle Worker* (Arena Stage), *The Burning Deck* (La Jolla Playhouse), *Antony and Cleopatra* and *Measure for Measure* (The Shakespeare Theatre) and *As You Like It* (Folger Shakespeare Theatre). New York theatre credits include *Silence* (Roundtable Ensemble), *Children of a Lesser God* (Keen Theatre Company) and *Spin Moves* (Summer Play Festival). **Other Theatre:** Theatreworks, The Studio Theatre, Theater J, The Kennedy Center and four seasons at O'Neill Playwrights Conference. Ms. Spielman holds an M.F.A. from University of California, San Diego.



SAMUEL STRICKLEN (Ensemble—*Under Construction*) **Regional Theatre:** *Six Degrees of Separation* (The Old Globe), *Current Nobody* (La Jolla Playhouse), *Victor/Victoria*,

Phantom and *Annie Get Your Gun* (Tulane Summer Lyric Theatre), *Cincinnati Pops* (with Martin Short) and the national/international tours of SITI Company's *bobrauschenbergamerica* and *Radio Macbeth*. **Off-Broadway:** *Creation: A Clown Show*. **Television:** *Six Degrees*, *As the World Turns* and *M.O.N.Y.* **Other Theatre:** *I Ain't Yo Uncle*, *A Dream Play*,

La Dispute, *Blues for an Alabama Sky*, *The Tempest* and *Arms and the Man*. **Additional Credits:** SITI Company (workshop); Mr. Stricklen holds a B.F.A. from University of Cincinnati, a CCM in acting and an M.F.A. from University of California, San Diego.

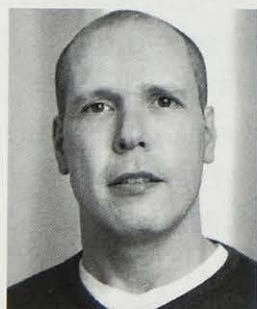


LUSIA STRUS (Frances McKinney—*Slasher*) **At Actors:**

Quake and *Chad Curtiss*, *Lost Again* (2001 Humana Festival).

Regional Theatre: *Henry IV* (Chicago Shakespeare Theatre/Royal Shakespeare Company);

Merry Wives of Windsor and *Love's Labour's Lost* (Chicago Shakespeare); *Hysteria*, *Whispering City*, *Our Town* and her commissioned show, *it ain't no fairy tale* (Steppenwolf Theatre Company; *LA Weekly* Award—best solo performance); *A Pirate's Lullaby* and *Big Love* (The Goodman Theatre/Brooklyn Academy of Music); and *SLAVS!* and *Go Away*. (European Repertory; Joseph Jefferson Award—principal actress). **Film/Television:** *50 First Dates*, *Miss Congeniality 2*, *Stir of Echoes* and independents *Moon Pie*, *Design* and *The Secret* (Iijic Festival, Mexico—Best Supporting Actress), *Crossing Jordan* (NBC), *Cupid* (NBC), two seasons of *Ned's Declassified School Survival Guide* (Nickelodeon) and several pilots. Alumni member of The Neo-Futurists (Chicago) and current member of The NY Neo-Futurists.



STEPHEN DUFF WEBBER

(Ensemble—*Under Construction*) **At Actors:**

Glengarry Glen Ross; *Hotel Cassiopeia* (2006 Humana Festival); *War of the Worlds*

(2000 Humana Festival, Orson Welles); *Cabin Pressure* (1999 Humana Festival);

Going, Going, Gone (1996 Humana Festival); *The Medium* (Actors' Modern Masters Festival); *Private Lives*; and *Hay Fever*. **Regional Theatre:** *Radio Macbeth* (Macbeth), *Death and the Ploughman*,

systems/layers (with Rachel's), *La Dispute*, *A Midsummer Night's Dream*, *bobrauschenbergamerica*, *Culture of Desire*, *War of the Worlds—The Radio Play* (Orson Welles) and *Short Stories*; American Repertory Theatre, Milwaukee Repertory Theater, San Jose Repertory Theatre, Portland Stage Company, Alabama Shakespeare Festival and Court Theatre.

Off-Broadway: *War of the Worlds* and *Hotel Cassiopeia* (BAM/Next Wave Festival), *Culture of Desire* (New York Theatre Workshop), *Death and the Ploughman* (CSC), *Freshwater* (Women's Project & Productions) and *Trojan Women 2.0* (EnGarde Arts).



TODD WEEKS (Adam Weber—*Absalom*) **Regional Theatre:** *Of Mice and Men* (Dallas Theater Center), *Copenhagen* (Playmakers Repertory Company), *The Underpants* (Alliance Theatre), *The Seagull* (George Street

Playhouse) and appearances at Williamstown, Hartford Stage and Mark Taper Forum. **Broadway:** *The Full Monty* (original cast), *The Last Night of Ballyhoo*,

Summer and Smoke and *Our Town*. National tours of *Angels in America* and *How to Succeed in Business Without Really Trying*. **Off-Broadway:** Member of the

esteemed Atlantic Theater Company, where credits include world premieres of David Mamet's *The Voysey Inheritance* and *Romance*, as well as premieres of *Scarcity*, *The Cider House Rules*, *Distant Fires* and Howard Korder's *Sea of Tranquility*, *Boys' Life* and *The Lights*, also performed at Lincoln Center Theater.

Film/Television: *The Maiden Heist* (2009), *The Deal*, *Medium*, *Law & Order(s)* and *The Unit*.

APPRENTICE COMPANY

MATTHEW BALDIGA (Ensemble—*Brink!*;

Hector—*3:59am: a drag race for two actors*) **At Actors:** *A Christmas Carol*. **Regional Theatre:**

Cyrano de Bergerac (PlayMakers Repertory Company). **Other Theatre:** *Twelfth Night*, *Dead Man Walking*, *The Cradle Will Rock*, *The Art of Dining*, *The Trestle at Pope Lick Creek*, *Bat Boy*, *Equus*, *Spring Awakening* and *Noises Off*. **Additional Credits:** Mr. Baldiga is a Phi Beta Kappa graduate of University of North Carolina at Chapel Hill.

JULIA BENTZ (Ensemble—*Brink!*) **Regional**

Theatre: Ms. Bentz is an alumna of Hangar Theatre Lab Company, has been a member of Artist's Crossing and is thrilled to be a member of Actors' Apprentice Company. **Additional Credits:** Ms. Bentz is from Dayton, Ohio, and holds a B.F.A. in acting from Wright State University.

DAVID MICHAEL BROWN (Ensemble—*Brink!*)

At Actors: *A Christmas Carol*. **Regional Theatre:** *Aesop's Network* (Berkshire Theatre Festival). **Other**

Theatre: *Still. Going Forward Backward* (dir. Daniel Stein), *Little Shop of Horrors*, *Henceforward...*, *The Two Gentlemen of Verona* and *Attempts on Her Life*. **Additional Credits:** Mr. Brown holds a B.A. in dramatic arts from Centre College in Danville, Ky.

ALISON CLAYTON (Ensemble—*Brink!*)

Regional Theatre: *Aesop's Network* (Berkshire

Theatre Festival). **Film:** *The 12 Trials of My Patience*. **Other Theatre:** *Hatfields and McCoys*, *The Spitfire Grill*, *Dearly Departed*, *BackStory* and *Blood Wedding*. **Additional Credits:** Ms. Clayton holds a B.A. in theatre from Greensboro College in Greensboro, N.C.

MICHAEL DALTO (Ensemble—*Brink!*) **At Actors:** *Shipwrecked!* and *Pride and Prejudice*. **Regional Theatre:** *A Christmas Carol* at Virginia Stage Company. **Other Theatre:** *Henry V*, *Lend Me a Tenor*, *All My Sons*, *Rumors*, *Hamlet* and *Limony Snicket's The Composer Is Dead*. **Additional Credits:** Mr. Dalto holds a B.A. from Rollins College.

ERIC ETEUATI (Ensemble—*Brink!*) **At Actors:** *Shipwrecked!* and *A Christmas Carol*. **Other Theatre:** *The Lost Colony* (Outdoor Drama), *A Servant of Two Masters* and *Much Ado About Nothing*. **Additional Credits:** National finalist in last year's Irene Ryan Competition at The Kennedy Center. Mr. Eteuati holds a B.A. in theatre and French culture and society from Emory & Henry College.

AMI JHAVERI (Ensemble—*Brink!*) **At Actors:** *Rock & Roll: The Reunion Tour* and *A Christmas Carol*. **Other Theatre:** *The Albatross* (Vertigo Theatre), *Electrical Inkblot Garden* (CenterRing), *Little Women*, *Three Penny Opera*, *Steel Magnolias* and *Electra* (University of Portland, Ore.). **Additional Credits:** Ms. Jhaveri holds a B.A. in theatre performance, theatre design and political science from University of Portland.

ANNA KULL (Ensemble—*Brink!*; Florencia—*Roanoke*) **Other Theatre:** *365 Days/365 Plays* (The Public Theater/The Brick), *The Adventures of Nervous Boy* and *Suburban Peepshow* (Nosedive Productions), *Blood Wedding* (Woodshed Collective) and co-created *Dressing Miss Julie* (FringeNYC; Fringe Excellence Award). **Additional Credits:** Ms. Kull holds a B.A. from Vassar College.

AARON MATTESON (Ensemble—*Brink!*) **Other Theatre:** Charles L. Mee's *Trojan Women*, David Mamet's *The Frog Prince*, *Hekabe* and Williamson in *Glengarry Glen Ross*. **Additional Credits:** Mr. Matteson is a recent graduate of Sarah Lawrence College and is very happy to be at Actors Theatre.

KATHARINE MOELLER (Hildy McKinney—*Slasher*; Ensemble—*Brink!*) **At Actors:** *Shipwrecked!*, *Dracula* and *A Christmas Carol*. **Television:** College week contestant on *Who Wants to Be a Millionaire?* **Other Theatre:** *How I Learned to Drive*, *Steel Magnolias*, *Cats*, *Dog Sees God*, *Independence*, *The Comedy of*

Errors and Arsenic and Old Lace. **Additional Credits:** Ms. Moeller holds a B.F.A. in musical theatre from Minnesota State University, Mankato.

CHRIS MOORE (Ensemble—*Brink!*) **At Actors:** *Dracula* and *A Christmas Carol*. **Other Theatre:** *Waiting for Lefty*, *H.M.S. Pinafore*, *Women Beware Women*, *Anything Goes*, *An Adult Evening of Shel Silverstein*, *Dark Ride* and *The Rimers of Eldritch*. **Additional Credits:** Mr. Moore holds a B.A. in economics from Davidson College, N.C.

ALLISON MOY (Ensemble—*Brink!*) **At Actors:** *Shipwrecked!*, *Pride and Prejudice* and *A Christmas Carol*. **Other Theatre:** *Angel Street*, *The Government Inspector*, *Major Barbara* and *Into the Woods* (University of Alabama) and *The Comedy of Errors* and *As You Like It* (The Rude Mechanicals). **Additional Credits:** Ms. Moy holds a B.A. in theatre from University of Alabama.

CLAUDINE MBOLIGIKPELANI NAKO (Ensemble—*Brink!*) **At Actors:** *Dracula* and *A Christmas Carol*. **Regional Theatre:** *Twelfth Night* and *The Nerd* (Idaho Repertory Theatre); and *Good Morning Athens: A Rock Musical* (The Kennedy Center). **Other Theatre:** *Dead Man Walking* (University of Wyoming). **Additional Credits:** Ms. Nako holds a B.F.A. in theatre and dance from University of Wyoming.

ANDY NOGASKY (Ensemble—*Brink!*; Sir Walter Raleigh—*Roanoke*) **Other Theatre:** *Two Rooms*, *Miss Julie*, *Urinetown*, *The Firebugs*, *Spring Awakening*, *The Glass Menagerie* and *Glengarry Glen Ross*. **Additional Credits:** Mr. Nogasky holds a B.A. in theatre with Honors from Bucknell University and is the 2007 recipient of the New Hampshire Theatre Award for best actor.

NANCY NOTO (Ensemble—*Brink!*; Daughter—*On the Porch One Crisp Spring Morning*) **At Actors:** *Dracula*. **Regional Theatre:** *Tales of a Fourth Grade Nothing* and *Flag* (Hangar Theater). **Additional Credits:** Ms. Noto holds a B.F.A. from New York University, was a member of the 2006 Hangar Theater Lab Company and has studied with Upright Citizens Brigade Theatre.

LAKEISHA RANDLE (Ensemble—*Brink!*) **Other Theatre:** Madame Blavatsky in *Anima Mundi*, Billie Holiday in *Gardenias in Her Hair* and Mrs. Clackett in *Noises Off*. **Additional Credits:** Ms. Randle holds an A.F.A. from Lon Morris College and a B.A. from Texas A & M University, Corpus Christi.

STEVEN RAUSCH (Ensemble—*Brink!*; Steve—*Roanoke*) **At Actors:** *Shipwrecked!* and *A Christmas Carol*. **Film:** *On Your Way* (Horizon Productions). **Other Theatre:** *Angels in America*, *A Christmas Carol* (Theatre in the Park), *Godspell*, *Sweet Charity*, *A Few Good Men*, *Grease!*, *The Apple Tree*, *The Colored Museum* and *Not About Nightingales* (North Carolina State University); and *The America Play* (New Traditions Theatre).

DANIEL REYES (Ensemble—*Brink!*; Laz—*3:59am: a drag race for two actors*) **At Actors:** *Dracula*. **Other Theatre:** *Lysistrata*, *Guys and Dolls*, *The Good Woman of Setzuan*, *Hamlet*, *The Pillowman* and *Anna in the Tropics*. **Additional Credits:** Mr. Reyes hails from Miami, by way of Hialeah, Fla. Upon completing his internship, he will hold a B.F.A. from University of Central Florida, Orlando.

JON RIDDLEBERGER (Ensemble—*Brink!*) **At Actors:** *Shipwrecked!* **Other Theatre:** *Superheroes*, *The Nose*, *Alligator*, *Hecuba*, *The Thorn of Desire*, *Macbeth*, *Bonfire Nights*, *Becoming Israel*, *Universe Expanding* and *Silence*. **Additional Credits:** Mr. Riddleberger recently wrote and directed *The Ballad of Thimblebear* and holds a B.A. from New York University's Tisch School of the Arts Experimental Theatre Wing.

ANNE VEAL (Ensemble—*Brink!*) **Regional Theatre:** *Nest* (Signature Theatre) and the Page-to-Stage Festival (The Kennedy Center). **Other Theatre:** *Short Order Stories* (Charter Theatre), *Hansel and Gretel* (Classika Theatre), *Much Ado About Nothing*, *Antigone*, *Into the Woods*, *The Mystery of Edwin Drood* and *Hamlet* (American University).

JACOB WILHELMI (Ensemble—*Brink!*) **At Actors:** *Shipwrecked!* and *A Christmas Carol*. **Other Theatre:** In addition to undergraduate productions, Mr. Wilhelmi has been in several professional productions of Gilbert and Sullivan operettas. Directly following the apprenticeship at Actors Theatre, he will be filming his first feature film with a lead role in *Oregon*. **Additional Credits:** Mr. Wilhelmi holds a B.A. from University of Portland.

DIRECTORS

AMY ATTAWAY (*3:59am: a drag race for two actors*) is currently the assistant director of Actors Theatre's Apprentice/Intern Company. **At Actors:** *3:59am* and *What Makes a Man*, both part of *The Tens*, this season's Apprentice/Intern Company

evening of ten-minute plays. Directing assistant on *Gathering Note* in the 2006-2007 season. **Regional Theatre:** Assistant director under Mark Rucker on the premiere production of Melanie Marnich's *A Sleeping Country* at Cincinnati Playhouse in the Park. **Other Theatre:** *The Last Five Years* (Crossroads Repertory Theatre), *Sailor's Song* and *Impossible Marriage* (The Necessary Theatre). Ms. Attaway is a graduate of the University of Evansville. She is a co-founder and past director of Theatre Alliance of Louisville and a proud member of Actors' Equity.

ANNE BOGART (*Under Construction*) is artistic director of SITI Company, which she founded with Japanese director Tadashi Suzuki in 1992. She is a professor at Columbia University where she runs the graduate directing program. Works with SITI Company include *Freshwater*, *Who Do You Think You Are*, *Radio Macbeth*, *Death and the Ploughman*, *La Dispute*, *Score*, *bobrauschenbergamerica* (2001 Humana Festival), *Room*, *War of the Worlds* (2000 Humana Festival), *Cabin Pressure* (1999 Humana Festival), *The Radio Play*, *Alice's Adventures*, *Culture of Desire*, *Bob*, *Small Lives/Big Dreams*, *The Medium* and *Going, Going, Gone* (1996 Humana Festival); Noel Coward's *Hay Fever* and *Private Lives*, August Strindberg's *Miss Julie* and Charles L. Mee's *Hotel Cassiopeia* (2006 Humana Festival) and *Orestes*. She has authored three books: *A Director Prepares*, *The Viewpoints Book* and *And Then, You Act*.

JO BONNEY (*The Hard Weather Boating Party*) **Off-Broadway/Regional Theatre:** Michael Weller's *Beast* and Alan Ball's *All That I Will Ever Be* (New York Theatre Workshop [NYTW]); Naomi Wallace's *The Fever Chart* (The Public Theater); Eric Bogosian's *subUrbia*, Charles Fuller's *A Soldier's Play* and Lisa Loomer's *Living Out* (Second Stage Theatre); Will Power's *The Seven* (NYTW; La Jolla Playhouse); Neil LaBute's *Fat Pig* (MCC Theater/Geffen Playhouse); *Some Girl(s)* (MCC Theater); Christopher Shinn's *On the Mountain* (Playwrights Horizons); UNIVERSES' *Slanguage* (NYTW; Mark Taper Forum); Lanford Wilson's *Fifth of July* (Signature Theatre); Jose Rivera's *Adoration of the Old Woman* (La Jolla Playhouse); *References to Salvador Dali Make Me Hot* and Diana Son's *Stop Kiss* (The Public Theater); and Danny Hoch's *Some People and Jails, Hospitals & Hip-Hop* (USA/Britain).

SEAN DANIELS (*Brink!*; *On The Porch One Crisp Spring Morning*) **At Actors:** *Rock & Roll: The Reunion Tour* (co-creator), *43 Plays for 43 Presidents*, *All Hail Hurricane Gordo* (2008 Humana Festival),

365 Plays/365 Days (2007 Humana Festival), *A Christmas Carol*, *The Santaland Diaries* and *Hedwig and the Angry Inch*. Mr. Daniels is the associate artistic director of Actors Theatre. He was formerly the associate artistic director/resident director of California Shakespeare Theater. He also spent a decade as the artistic director and co-founder of Dad's Garage Theater Company in Atlanta, Ga. Currently he also serves as associate artist of Geva Theatre Center. He was named "Best Director" in Atlanta (Creative Loafing) and the Bay Area (Dean Goodman and Bay Area Critics Circle).

JOSH HECHT (*Slasher*) is currently represented by Bradford Louryk's *Christine Jorgensen Reveals* (Drama Desk Award for Unique Theatrical Experience, GLAAD Media nomination for Outstanding New York Theater) at Theatre Row through March 16. Also currently, he co-wrote and performs in *Inside/Out* with Ping Chong and Company at The Times Center Stage in New York through March 21. **Regional Theatre:** Megan Mostyn-Brown's *Lizards...* (Guthrie Theater); *Christine Jorgensen Reveals* (Boston Center for the Arts; IRNE nomination for Outstanding Visiting Production); *Inside/Out* (the Kennedy Center); and Rachel Schroeder's *Heliantha* (Berkshire Theatre Festival). **Off-Broadway:** Megan Mostyn-Brown's *Girl* (Cherry Lane Theatre), Anna Ziegler's *BFF* (WET at the DR2), Bob Morris's *Assisted Loving* (MCC Theater), Winter Miller's *The Penetration Play* (13P) and others. Recent workshops at Playwrights Horizons, New York Theatre Workshop, MCC Theater, Geva Theatre Center, The Playwrights' Center's PlayLabs, LAByrinth Theatre Company, Dance Theater Workshop, Eugene O'Neill Theater Center, TheatreWorks, New Dramatists and The Ensemble Studio Theatre.

MARC MASTERSON (*Wild Blessings*) Please see Executive Officers biographies, page 42.

STEVEN RAHE (*Roanoke*) serves as education director for Actors Theatre. **At Actors:** *Three Guys and a Brenda* and *Sword Play* for the Apprentice Company and directing assistant on *The Chosen* and *A Christmas Carol*. In New York he has directed and/or produced for Theatre for a New Audience, SoHo Rep., Judith Shakespeare Company, Cherry Lane Alternative, The Flea and the Rockwell Group. Locally, he has directed for Stage One: The Louisville Children's Theatre, Music Theatre Louisville, Specific Gravity Ensemble and Squallis Puppeteers. Mr. Rahe holds an M.F.A. from City University of New York's

Brooklyn College and is a member of Theatre Alliance of Louisville.

GIOVANNA SARDELLI (*Absalom*) received the 2007-2008 Joe A. Callaway Award for outstanding director for Rajiv Joseph's play *Animals Out of Paper* (Second Stage Theatre). Other collaborations with Mr. Joseph are *All This Intimacy* (Second Stage Theatre), *The Leopard and The Fox* (Alter Ego) and *Huck & Holden* (Cherry Lane Theatre). New York credits include Lynn Rosen's *Apple Cove* (Lark Play Development Center/Todd Mountain Theatre Project) and *Back From The Front*; and Padriac Lillis' *Two Thirds Home* (Broken Watch Theatre Company). **Regional Theatre:** *Taking Flight* (The Goodman Theatre/CTG/San Diego Repertory Theatre/Sundance Institute Theatre Lab) and many plays with Theatre Workshop of Nantucket. She is a faculty member of New York University's Graduate Acting Program and the dance department. She has directed numerous productions for various Tisch departments. Ms. Sardelli holds an M.F.A. from New York University's Graduate Acting Program and is a graduate of their Director's Lab.

CHAY YEW's (*Ameriville*) directing credits include Actors Theatre, The Public Theater, New York Theatre Workshop, Mark Taper Forum, Long Wharf, The Kennedy Center, Oregon Shakespeare Festival, American Conservatory Theatre, Huntington Theatre, Cincinnati Playhouse, Empty Space, Portland Center Stage, East West Players, Cornerstone Theatre Company, National Asian American Theatre Company, Ma Yi Theatre, Geva Theatre Center, Gala Hispanic Theatre, Singapore Repertory Theatre and Smithsonian Institute, among others. His opera credits include the world premieres of Osvaldo Golijov and David Henry Hwang's *Ainadamar* (co-production with Tanglewood Music Center, Lincoln Center for the Performing Arts and Los Angeles Philharmonic) and Rob Zuidam's *Rage d'Amours* (Tanglewood Music Center). He is the recipient of a 2007 Obie Award.

DESIGNERS

ALICE BALDWIN (Properties Manager—*Ameriville; Brink!*) **Regional Theatre:** *Woza Albert!* (Crossroads Theatre). Ms. Baldwin just completed her sixteenth season at Kentucky Opera as properties master. Other properties master credits include Maine State Music Theatre, Lake George Opera and Louisville Ballet. **Film:** She was a scenic artist on *A League of*

Their Own (Columbia Artists) and was on-set dresser for *A Horse for Danny* (Hallmark Films) and *Lawn Dogs* (Duncan Kenworthy, producer). **Television:** Ms. Baldwin has designed sets for *Work Essential Skills* (KET) and dressed sets for Kroger, Pizza Hut, Papa John's, UPS, Wild Turkey Bourbon and Alliant Healthcare commercials. She has worked on films for Donna Lawrence Productions, most recently, the new Thomas Jefferson Visitors Center at Monticello. Ms. Baldwin holds a B.S. from University of Louisville.

MATT CALLAHAN (Resident Sound Designer—*Slasher; The Hard Weather Boating Party; Wild Blessings*) designed sound for Actors Theatre's productions of *Rock & Roll: The Reunion Tour* (co-creator), *Glengarry Glen Ross*, *43 Plays for 43 Presidents*, *Hedwig and the Angry Inch*, *Great Falls*, *This Beautiful City*, *All Hail Hurricane Gordo* and *Game On* (2008 Humana Festival); *dark play or stories for boys* and *The Unseen* (2007 Humana Festival), *Sherlock Holmes: The Final Adventure*, *Mary's Wedding*, *The Chosen*, *My Fair Lady*; *The Scene* and *Six Years* (2006 Humana Festival); *Intimate Apparel*, *The Crucible*, *Twelfth Night*, *The Glass Menagerie*, *A Christmas Carol*, *Betrayal*, *Underneath the Lintel*, *The Gin Game*; *Hazard County*, *The Shaker Chair* and *Pure Confidence* (2005 Humana Festival). He was in residence this summer at the Eugene O'Neill National Playwrights Conference. Mr. Callahan has served as audio engineer for Chicago's Steppenwolf Theatre Company and assistant engineer for The Blue Man Group and was a member of Defiant Theatre.

JENNIFER CAPRIO (Costume Designer—*Slasher; The Hard Weather Boating Party*) **Regional Theatre:** *In the Beginning* (Dallas Theatre Center), *Romeo et Juliette* (Minnesota Opera), *The Bartered Bride* (Opera Boston), Geva Theatre Center, North Shore Music Theatre and The Cleveland Play House. **Broadway:** *The 25th Annual Putnam County Spelling Bee*. **Off-Broadway:** *Fugitive Songs* (Dreamlight), *Two Rooms* (The Lion), *SaKaLa* (45 Bleeker), *Masked* (DR2), *Striking 12* (Daryl Roth), *Wanda's World* (Amas Musical Theater), *Serendib* (EST), *The Atheist* (Center Stages), *Broadway Bares* (BC/EFA event) and *The Blowin' of Baile Galle* (Irish Arts Center, dir. Gabriel Byrne). **Other Theatre:** Williamstown Theatre Festival (five seasons), Hangar Theatre (ten seasons), Weston Playhouse and Barrington Stage Company. Ms. Caprio's work can currently be seen on exhibition at Lincoln Center in their presentation *Curtain Call: Celebrating a Century of Women Designing for Live Performance*.

LINDSAY CHAMBERLIN (Costume Designer—*Roanoke*) began her career at The Old Globe Theatre in San Diego before becoming a Halloween costume designer for a major novelty corporation. This is her first season at Actors Theatre. She has assisted on *Dracula*, *A Raisin in the Sun*, *A Christmas Carol* and *Match Games*. She also designed *The Tens* (Apprentice Company).

JASON CZAJA (Video Designer—*Ameriville*) previously worked at Actors Theatre for eight seasons, including five years as audio supervisor and two years as media technologist. **At Actors:** Video design credits include *Dracula*; *The Tempest*; *Cruising the Divide* (2008 Apprentice Company); *When Something Wonderful Ends* and *dark play or stories for boys* (2007 Humana Festival); *Natural Selection* (2006 Humana Festival); *Hazard County*, *Moot the Messenger* and *Memory House* (2005 Humana Festival); and *Mary's Wedding*. With a degree from Grinnell College, he has done audio work with such companies as Utah Shakespearean Festival, Theatre for a New Audience, American Players Theatre and Steppenwolf Theatre Company. Favorite production work has included Actors Theatre's 2001 *Solo Mio*, American Players Theatre tour of *Much Ado About Nothing* and creating a butterfly exhibit for ACME Corporation, Milwaukee.

RUSSELL CHAMPA (Lighting Designer—*Ameriville; Slasher; The Hard Weather Boating Party*) Recent projects include *Tales of An Urban Indian* (The Public Theater); *In The Next Room or The Vibrator Play* (Berkeley Repertory Theatre); *School Of Night* (Mark Taper Forum); *The Slugbearers of Kayrol Island* (Vineyard Theater); *Eurydice* (Second Stage Theatre, Yale Repertory Theatre and Berkeley Repertory Theatre); and *The Four of Us* (Manhattan Theatre Club and The Old Globe). **Regional Theatre:** Wilma Theatre, Hartford Stage Company, Trinity Repertory Company, McCarter Theatre Center, Long Wharf Theatre, American Conservatory Theater, The Actors Gang and The Kennedy Center. **Broadway:** Julia Sweeney's *God Said "Ha!"* (Lyceum Theatre). New York theatres include Promenade Theatre, Union Square Theatre, Cherry Lane Theater, Classic Stage Company, New York Stage & Film, Primary Stages and La MaMa E.T.C.

NICK DENT (Lighting Designer—*Ten-Minute Plays*) is in his seventh season at Actors Theatre. **At Actors:** *Uncle Sam's Satiric Spectacular* (2005 Humana Festival), *Neon Mirage* (2006 Humana Festival), *The Open Road Anthology* (2007 Humana

Festival), *Things that Go Bump in the Night* and *Slanguage* (lighting coordinator). **Other Theatre:** Selected design credits at Dancer's Inc. include *Alice in Wonderland*, *The Nutcracker* and *Feet and Wings*. Mr. Dent is involved with many groups in the Cincinnati area; design credits include *Cinderella*, *Footloose*, *The Scarlet Pimpernel*, *Jekyll and Hyde: The Musical*, *The Civil War*, *In the Beginning*, *Baker's Wife*, *Lucky Stiff*, *Children of Eden*, *The Wizard of Oz*, *The Mystery of Edwin Drood*, *Weird Romance*, *Damn Yankees*, *Big River* and *The Odd Couple*. He also designs and programs the annual Christmas Show at First Baptist Church in Mt. Washington, Ky.

EMILY GANFIELD (Costume Designer—*Brink!*; *On the Porch One Crisp Spring Morning*; 3:59am: a drag race for two actors) **At Actors:** *Rock & Roll: The Reunion Tour*, *A Tuna Christmas* and *43 Plays for 43 Presidents*. **Other Theatre:** *The Shape of Things* (Festival 56), *The Firebugs* (Bucknell University), *Danny and the Deep Blue Sea* (Coe College) and *Twelfth Night* (the TEAM, New York).

DONNA L. LAWRENCE (Video Designer—*Wild Blessings*) Production credits include producer, director or creative director for over 100 media theatre productions in the U.S. and beyond, including *Freedom Rising*, a live theatre-in-the-round production (The National Constitution Center); *Cyclorama Sound and Light Experience* and signature films (Gettysburg Museum and Visitor Center); *Jazz Is...* (American Jazz Museum, Kansas City; Sundance Selection); *The Greatest Race* (The Kentucky Derby Museum, Louisville); and *The Kentucky Show* (Kentucky Center for the Arts, Louisville). **Regional Theatre:** Development Phase Carlyle Brown's *Are You Now or Have You Ever Been...* (Play Labs; The Playwright's Center, Minneapolis). **Additional Credits:** Ms. Lawrence holds a B.F.A. in music from University of Texas, Austin, and an M.F.A. from New England Conservatory of Music.

BRIAN J. LILIENTHAL (Resident Lighting Designer—*Absalom*; *Wild Blessings*; *Brink!*) **At Actors:** Over 20 productions, including *Shipwrecked!*, *Rock & Roll: The Reunion Tour*, *Glengarry Glen Ross*, *Pride and Prejudice*, *43 Plays for 43 Presidents*, *Hedwig and the Angry Inch*, *The Clean House*, *Spunk*, *The Chosen*, *Mary's Wedding*, *9 Parts of Desire*, *The Tempest*, *Topdog/Underdog*, *Italian American Reconciliation* and *Neighborhood 3: Requisition of Doom* and *the break/s* (2008 Humana Festival). **Other Theatre:** Trinity Repertory Company, Arden Theatre Company, Merrimack Repertory Theatre, Arizona

Theatre Company, Cherry Lane Theatre, Capital Repertory Theatre, La Mama E.T.C., InterAct Theatre Company, New Paradise Laboratories Theatre Inc. and the National Playwrights Conference at Eugene O'Neill Theater Center. Opera credits include Bard Summerscape, Long Beach Opera, Portland Opera Repertory Theatre and Boston Academy of Music. Mr. Lilienthal holds an M.F.A. from California Institute of the Arts.

DOC MANNING (Properties Designer—*Slasher*; *The Hard Weather Boating Party*; *Wild Blessings*) is in his eleventh season at Actors Theatre. His performing arts career has taken him to Santa Fe Opera, CenterStage and The Joffrey Ballet of Chicago. At The Joffrey, he was amazed to find that his job included flying all around the world. Now he has returned home to Louisville and to Actors Theatre, where he is amazed to find that his job includes taking things apart to see what's inside.

BENJAMIN MARCUM (Sound Designer—*Ameriville*; *Absalom*; *Brink!*; *Ten-Minute Plays*), a Louisville native, is happy to be at Actors Theatre for his eighth season. **At Actors:** *Match Games*, *A Raisin in the Sun*, *Becky Shaw*, *Neighborhood 3: Requisition of Doom* (2008 Humana Festival), *Topdog/Underdog*, *The Santaland Diaries*, *The Underpants*, *Gem of the Ocean*, *9 Parts of Desire*, *The As If Body Loop* and *The Open Road Anthology* (2007 Humana Festival), *Act a Lady* and *Neon Mirage* (2006 Humana Festival), *Uncle Sam's Satiric Spectacular* (2005 Humana Festival), *Fast and Loose* (2004 Humana Festival), *Bad Dates*, *Dracula*, *A Tuna Christmas* and *A Christmas Carol*. **Other Theatre:** *Night of the Living Dead*, *Macbeth*, *Dirty Blonde*, *Joseph and the Amazing Technicolor Dreamcoat*, *Guys and Dolls*, *Sunday in the Park with George*, *The Secret Garden* and *True West* and founder of the 553 Brewery.

PAUL OWEN (Resident Scenic Designer—*Ameriville*; *The Hard Weather Boating Party*; *Slasher*; *Brink!*; *Ten-Minute Plays*) Now in his thirty-eighth season, Mr. Owen has designed a vast majority of Actors Theatre's productions in the 32-year history of the Humana Festival. Mr. Owen has designed lights and costumes for numerous plays in addition to his primary task of designing the environments for the majority of Actors' productions; all of Actors' international tours; national tours to Baltimore, the Kennedy Center and the Spoleto Festival; and seven Kentucky tours. He is a frequent guest designer for theatres other than Actors—most recently for Syracuse Stage, Florida Stage, Georgia

Shakespeare Festival and ACT in Seattle. Mr. Owen was essential in planning Actors' expansion projects in 1972 and 1994. **Additional Credits:** 1992 Governor's Award in the Arts for artistic achievement. Mr. Owen spent the first ten years of his career with the Alley Theatre.

NEIL PATEL (Scenic Designer—*Under Construction*) **At Actors:** *Hotel Cassiopeia* (2006 Humana Festival), *War of the Worlds* (2000 Humana Festival), *Adding Machine*, *Private Lives*, *A Midsummer Night's Dream*, *Room and Bob*.

Broadway: [title of show], *Sideman* (West End and Kennedy Center), *'Night Mother*, *Ring of Fire* and *Underneath the Lintel*. **Off-Broadway:** *Fifty Words* (MCC Theater), *Dinner With Friends* (Variety Arts Theater and National Tour), *Peter and Jerry* (Second Stage), *Streamers* (Roundabout Theatre Company) and *Hotel Cassiopeia* (BAM/Next Wave). Opera credits include New York City Opera, Santa Fe Opera, Minnesota Opera, Opera Theater St. Louis and Tokyo Nikikai Opera Theater.

Film/Television: *In Treatment* (HBO) and *Alone* (Gregory Orr Productions). Mr. Patel is a SITI Company member and received a Helen Award, numerous Drama Desk nominations along with a 1996 and 2001 Obie Award for sustained excellence.

MICHAEL B. RAIFORD (Scenic Designer—*Absalom; Wild Blessings*) **At Actors:** *Rock & Roll: The Reunion Tour*, *Hedwig and the Angry Inch*; *Neighborhood 3: Requisition of Doom and the break/s* (2008 Humana Festival); *The Unseen and dark play or stories for boys* (2007 Humana Festival); and *Jouet*. **Regional Theatre:** *The Chosen and Well* (The Cleveland Play House), world premiere of *Young Lady from Rwanda* and *Give 'em Hell Harry* (Kansas City Repertory Theatre), *Guys and Dolls* (Maltz Jupiter Theatre) and *The Fantasticks* (Ford's Theatre). **Other Theatre:** *What Goes Up* (New Victory Theatre in New York), *Rigoletto* (Austin Lyric Opera) and *Bartered Bride* (Opera Boston). Mr. Raiford is a resident designer at Zachary Scott Theatre Center, where he has designed over 90 productions, including *Speeding Motor Cycle—the Music of Daniel Johnston*, *Porgy and Bess*, *Doubt*, *An Almost Holy Picture*, *Take Me Out*, *I Am My Own Wife*, *The Exonerated* and *Urinetown, The Musical*.

JAMES SCHUETTE (Costume Designer—*Under Construction*) is a member of and has designed over 20 productions for SITI Company. Recent set designs include Tarell Alvin McCraney's *Wig Out*

(Vineyard Theatre) and Paula Vogel's *Civil War Christmas* (Long Wharf Theatre), both directed by Tina Landau); *Kafka on the Shore* (Steppenwolf Theatre Company; dir. Frank Galati); and costume design for *I Capuleti e i Montecchi* (Glimmerglass Opera; dir. Anne Bogart). His work has been seen at Actors Theatre, ART, ACT, Arena Stage, BAM/Next Wave Festival, Berkeley Repertory Theatre, La Jolla Playhouse, Mark Taper Forum, Manhattan Theatre Club, New York Theatre Workshop, Oregon Shakespeare Festival, Playwrights Horizons, The Public Theatre, Seattle Repertory Theatre, Yale Repertory Theatre, Boston Lyric Opera, Houston Grand Opera, Seattle Opera, Minnesota Opera, New York City Opera, Santa Fe Opera, Minnesota Opera and internationally.

BRIAN H SCOTT (Lighting/Video Designer—*Under Construction*) With SITI Company he designed *Freshwater*, *Who Do You Think You Are*, *Radio Macbeth*, *Hotel Cassiopeia* (2006 Humana Festival), *Death and the Ploughman*, *bobrauschenbergamerica* (2004 Humana Festival; Henry Hewes Design Award), *systems/layers* and *War of the Worlds—The Radio Play*. **Off-Broadway:** *The Method Gun*, *Lipstick Traces*, *Big Love*, *Cherrywood* and *Matchplay* (Rude Mechanicals); *Hamlet*, *Richard II*, *Richard III* and *The Tempest* (Classic Stage Company); *Dead Man's Cell Phone* (Playwrights Horizons); and *Songs From an Unmade Bed* (New York Theatre Workshop).

LORRAINE VENBERG (Resident Costume Designer—*Ameriville; Absalom; Wild Blessings*) **At Actors:** *Match Games*; *A Raisin in the Sun*; *Glengarry Glen Ross*; *This Beautiful City* (2008 Humana Festival); *The Clean House*; *The Tempest*; *Spunk*; *The Underpants*; *Dracula*; *Hedwig and the Angry Inch*; *9 Parts of Desire*; *Mary's Wedding*; *The Chosen*; *Gem of the Ocean*; *Intimate Apparel*; *The Crucible*; *Twelfth Night*; *Love, Janis*; *Fences*; *Pure Confidence*; *Memory House*; *A Christmas Carol*; *Blues for an Alabama Sky*; *Ain't Misbehavin'*; *Omnium-Gatherum* (2003 Humana Festival); *The Pavilion*; and *The Importance of Being Earnest*. **Other Theatre:** Studio Theatre, Arizona Theatre Company, Cincinnati Playhouse, Victory Gardens Theatre, Kansas City Repertory Theatre, Cleveland's PlayhouseSquare, Arden Theatre Company, Berkshire Theatre Festival, Pittsburgh Public Theater, City Theatre, Berkshire Theatre Festival, Pittsburgh Public Theater and City Theatre.

MARK WALSTON (Resident Properties Designer—*Absalom; Under Construction; Ten-*

Minute Plays) is in his fifteenth season at Actors Theatre and most recently designed *Match Games*. Over the past ten years he has been Props Master for over 80 productions, including *Hedwig and the Angry Inch*, *Italian American Reconciliation*, *My Fair Lady*, *The Crucible*, *The Glass Menagerie*; *The Drawer Boy* and *After Ashley* (2004 Humana Festival), *Omnium-Gatherum* (2003 Humana Festival), *The Importance of Being Earnest*, *Floyd Collins*, *Full Gallop* and *Angels in America*. Mr. Walston's additional credits include Worcester Foothills Theatre, the Boston premiere of *Pump Boys and Dinettes* at Charles Playhouse, Maine State Music Theatre, Music Theatre North and the national tour of *Mame* as dresser to Patrice Munsel. A native of Grosse Pointe, Mich., Mr. Walston is a graduate of Wagner College in Staten Island, N.Y.

DARRON L WEST (Sound Designer—*Under Construction*) is a SITI Company member since 1993 and first collaborated with Anne Bogart in 1990 while resident sound designer at Actors Theatre. His designs have been heard in over 400 productions both nationally and internationally. His accolades include a 1998 Obie Award for SITI Company's *Bob*, a 2000 Princes Grace Award, *Entertainment Design Magazine* Eddy Award, the 2004 and 2005 Henry Hewes Design Award and the 2006 Lortell Award. Directing credits include *Kid Simple* (2004 Humana Festival), *Lilly's Purple Plastic Purse* (Children's Theater Company, Minneapolis), *Big Love* (Rude Mechanicals, Austin, Texas), *Eurydice* (Children's Theatre Company) and SITI Company's *War of the Worlds—The Radio Play* and *Radio Macbeth*.

CREATIVE STAFF

MALCOLM DALGLISH (Original Music/Musical Director—*Wild Blessings*) Please see The Acting Company biographies, page 23.

MARGRET FENSKE (Music Supervisor—*Brink!*) Please see Production biographies, page 37.

RINDA FRYE (Dialect Coach—*Slasher*) is a dialect, voice and text coach. Past Actors Theatre credits include *Act a Lady*, *Pure Confidence*, *Moot the Messenger*, *A Christmas Carol*, *Dracula*, *Tallgrass Gothic*, *At the Vanishing Point* and *Slide Glide the Slippery Slope*. She has coached for Stage One Children's Theatre, Music Theatre Louisville, Kentucky Shakespeare Festival and the Utah Shakespeare Players in Salt Lake City. She is a

professor of theatre at University of Louisville, where she teaches stage speech and acting for the M.F.A. acting program, directs and coaches acting and voice. She holds a Ph.D. in theatre from University of Oregon and is a member of VASTA (the Voice and Speech Trainers Association) and an associate editor for IDEA, an International Dialects of English Archive on the worldwide web.

RACHEL GRIMES (Musical Arranger—*Under Construction*) has collaborated with SITI Company since 2001 on projects including *Hotel Cassiopeia* (2006 Humana Festival) and as a member of Rachel's on *systems/layers*. A Louisville composer and pianist, she has released six albums with Rachel's. New releases for 2009 include *Book of Leaves*, for solo piano, and an album with King's Daughters & Sons.

MILLICENT JOHNNIE (Movement Supervisor—*Ameriville*) is a native of Louisiana. She toured extensively with Urban Bush Women as resident choreographer and resident director. She has served as a veteran staff member of Universal Dance Association and is the co-founder of the Phlava Hip Hop and Jazz Dance Company, as well as the recipient of a Prague International Dance Festival award for best choreography and a first place International Dance Title winner for her hip hop choreography piece entitled *Wrath*. Ms. Johnnie's choreography has been featured at Cleo Parker-Robinson Dance, Urban Bush Women, Hubbard Street 2 and in the Alternate Roots cultural tour *Uprooted: The Katrina Project* (ESPN). **Additional Credits:** Dance faculty at Agnes Scott College, Tulane University and Dillard University.

K. JENNY JONES (Fight Director—*Slasher*; *Absalom*; *The Hard Weather Boating Party*), a fight master and certified fight director of the Society of American Fight Directors (SAFD), stages fights and teaches throughout the U.S. and abroad. **At Actors:** *Dracula*. **Regional Theatre:** *Of Mice and Men* (St. Louis Repertory); *Twelfth Night*, *Avenue X*, *Coyote on a Fence* and *The Turn of the Screw* (Cincinnati Playhouse in the Park); *Don Giovanni* (Portland Opera); and *Romeo et Juliette*, *Carmen*, *Tosca* and the world premiere of *Margaret Garner* with Denise Graves (Cincinnati Opera). Currently an Associate Professor at the College Conservatory of Music, Ms. Jones is a Master Teacher of stage combat known for her contemporary fighting style and is the only woman in the U.S. inducted into the College of Fight Masters by the SAFD.

DAVID KEETON (Orchestration and Vocal Arranger) **At Actors:** *A Christmas Carol* earlier this winter. **Regional Theatre:** *Cannibal: The Musical* and *The Mystery of Irma Vep* (Dad's Garage Theatre), *Oodle Doodle Box* (Geva Theatre) and *Macbeth* (Solstice Repertory). **Television:** Bandleader for *World Cup Comedy*. Mr. Keeton is currently touring with The Second City at Sea.

LEE LOOK (Fight Director—*Brink!*) **At Actors:** 2004 and 2007 Humana Festival, *Dracula* and *Sherlock Holmes: The Final Adventure*. As an actor/fight choreographer his other venues include The Old Globe Theatre, Deaf West Theatre in Los Angeles, The National Theatre of the Deaf, Atlanta's Alliance Theatre, Georgia Shakespeare Festival, Horizon Theatre Company and a recent regional run of Albee's *The Zoo Story*. **Television:** *Sesame Street*, *Unsolved Mysteries*, *E!'s True Hollywood Stories*, *The Profiler*, *General Hospital* and *Port Charles*. **Film:** *The Wildcard*, *The Witchcatcher* and *More Than Puppy Love* with Diane Ladd. He toured nationally with a one-person show about Robert Louis Stevenson. Dr. Look is a counselor, firefighter and Actors Theatre's New Voices Coordinator. Through the Community Foundation of Louisville, Dr. Look runs the LeeLookFund for spinal injury research.

DELILAH SMYTH (Movement Consultant—*The Hard Weather Boating Party*; Movement Director—*Brink!*) Currently director of education for the Louisville Ballet, Ms. Smyth joined the company in 1992, retiring from the stage in 2007 as a first soloist. In addition to her career as a dancer, she has also had the opportunity to choreograph extensively, including *Memories of Green* and *If you ain't right, git right!* (Louisville Ballet); *A Christmas Carol* (Actors Theatre); *Eugene Onegin* and *The Pearl Fishers* (Kentucky Opera); *The Rocky Horror Show* (Acting For A Cure); *Oliver* (Broadway at Iroquois); and *hush* for Empujón, a Louisville-based contemporary dance company. Last year, Ms. Smyth partnered with musician Ben Sollee, choreographing for both his video and stage show. Ms. Smyth is the recipient of a Kentucky Arts Council Fellowship, an award given for outstanding work created by Kentucky choreographers, composers and writers.

PRODUCTION

KATHLEEN KRONAUER (Production Manager) returns to Actors Theatre, where she was an

electrician from 1993 to 1996 and then audio supervisor in 2000-2001. Since then she was production manager for Champions on Ice; Axxis, Inc.; and Broadway at Iroquois. For the past seven years she was production coordinator for the U.S. and international tours of Neil Diamond, Barbra Streisand, the Beastie Boys, Yanni and Bette Midler. Her lighting designs have been seen from Edinburgh Fringe Festival to Broadway at New Victory Theatre and even locally for Stage One Children's Theatre at The Kentucky Center, Ballet Espanol, Pleiades Theatre Company, AfterImages Dance Company, Derby Dinner Playhouse, Public Theatre of Kentucky and the Actors Co-op in Knoxville. Ms. Kronauer received her B.A. from Western Kentucky University.

PAUL WERNER (Assistant Production Manager/Lighting Supervisor) is excited to be in a new role for his twelfth season at Actors Theatre. **At Actors:** Lighting designs include all of the Ten-Minute Plays in the Humana Festival from 2000 to 2008, *LOW* (2006 Humana Festival), *Fast and Loose* (2004 Humana Festival) and *Trepidation Nation* (2003 Humana Festival). **Other Theatre:** *The Merchant of Venice*, *The Taming of the Shrew*, *A Winter's Tale*, *Oedipus*, *King Lear*, *As You Like It*, *The Tempest*, *All's Well That Ends Well*, *Romeo and Juliet* and *Macbeth* at Walden Theatre.

DEBRA ANNE GASPER (Resident Stage Manager—*Absalom*) is now in her eighth season at Actors Theatre, where she has stage managed over 40 productions. Some of her favorites include *The Tempest*; *This Beautiful City* (2008 Humana Festival); *Love, Janis*; *Macbeth*; *Betrayal*; *Mary's Wedding*; and *Act a Lady* (2006 Humana Festival). Ms. Gasper's credits include Long Wharf Theatre, Cleveland Sign Stage Theatre, The River Repertory and The John Michael Kohler Arts Center.

ROBIN GRADY (Stage Manager—*Slasher*) joins Actors Theatre for the first time. **Regional Theatre:** Assistant stage manager for *A Christmas Carol* and *Blithe Spirit* and production assistant for *Dublin Carol*, *Some Thing Are Private*, *The Clean House* and *A Delicate Balance* at Trinity Repertory Company. **Other Theatre:** Stage manager for *Follies* at Lyric Stage Company of Boston; *Torah! Torah! Torah!*, *Speech & Debate*, *Girl on Girl* and *Warfare* (The Brown/Trinity Playwrights Repertory Theatre); and assistant stage manager for *The Elephant Man* and *Julius Caesar* at Gamm Theatre. Ms. Grady holds a B.F.A. in stage management from University of Rhode Island.

PAUL MILLS HOLMES (Resident Production Stage Manager—*Wild Blessings*; *The Tens*) is in his seventeenth season at Actors Theatre. **At Actors:** He has stage managed 95 plays in the regular season, including 15 Humana Festivals. **Regional Theatre:** *The Glass Menagerie*, *Betsey Brown*, *Indians* and *The Three Sisters* at McCarter Theatre Center. **Broadway:** *Les Liaisons Dangereuses*, *Smile and Oh! Calcutta!* **Off-Broadway:** *Steel Magnolias*, *Little Shop of Horrors* and *Oil City Symphony*. **Additional Credits:** Directed *Little Shop of Horrors* in Tel Aviv and Tokyo; 33 seasons at Pennsylvania's Totem Pole Playhouse.

ELIZABETH MOREAU (Stage Manager—*Under Construction*) With SITI Company she has worked on the creation of *Freshwater*, *Who Do You Think You Are*, *Radio Macbeth*, *Hotel Cassiopeia* (2006 Humana Festival), *Intimations for Saxophone*, *A Midsummer Night's Dream*, *La Dispute*, *Hayfever*, *Death and the Ploughman*, *bobrauschenbergamerica* (2004 Humana Festival), *Score and systems/layers* (with the band Rachel's) and has toured these as well as *Bob*, *Room*, *War of the Worlds*, *War of the Worlds—The Radio Play* and *Cabin Pressure*. She has worked on *Gull* and *Shutter* (LightBox), *Match-Play* (Rude Mechanicals), *Dead Man's Cell Phone* with Ms. Bogart, *Apparition*, *To the Lighthouse* and *Doris to Darlene* with Les Waters. Ms. Moreau is artistic associate of the O'Neill Playwrights Conference.

KATHY PREHER (Stage Manager—*The Hard Weather Boating Party*) **At Actors:** *Rock & Roll: The Reunion Tour*, *43 Plays for 43 Presidents*, *Great Falls* (2008 Humana Festival), *A Tuna Christmas*, *The Santaland Diaries*, *Hedwig and the Angry Inch*, *The Unseen* (2007 Humana Festival), *A Tuna Christmas*, *Omnium-Gatherum* (2003 Humana Festival), *A Christmas Carol*, *Dracula*, *Big Love* (2000 Humana Festival), *Hair*, *Home* and both *The Trestle at Pope Lick Creek* and *Ti Jean Blues* (1998 Humana Festival). **Other Theatre:** *Dream*, *The Best Christmas Pageant Ever*, *Green Eggs and Ham* and *Legend of Sleepy Hollow* (Stage One); *Henry V* and *Twelfth Night* (Orlando-UCF Shakespeare Festival); *Love's Labours Lost*, *Henry IV part I*, *Merry Wives of Windsor* and *Betrayal* (Shakespeare & Company); and *Madame Butterfly*, *The Magic Flute* and *Barber of Seville* (Kentucky Opera).

MEGAN SCHWARZ (Stage Manager—*Ameriville*) previously worked on the Humana Festival productions of *dark play or stories for boys*, *Neon Mirage*, *Six Years*, *A Nervous Smile* and *Sans-culottes in the Promised Land*, as well as *I Am*

My Own Wife and *A Tuna Christmas*. Most recently, Ms. Schwarz was the production stage manager for *A Christmas Carol* (Trinity Repertory Theatre). New York credits include Vineyard Theatre, New Georges, 13P, SPF, FringeNYC and the Big Apple Circus. Ms. Schwarz has also worked with New York Stage & Film, the Adirondack Theatre Festival and the Idaho, North Carolina and Nebraska Shakespeare Festivals, and she also toured with the Nebraska Theatre Caravan. Ms. Schwarz ran the New York City Marathon in 2008 and the Amsterdam Marathon in 2006.

MARY SPADONI (Stage Manager—*Brink!*) **At Actors:** Stage manager for *Game On* (2008 Humana Festival) and *A Raisin in the Sun*; and production assistant on *Match Games*, *43 Plays for 43 Presidents*, *Great Falls* (2008 Humana Festival), *Hedwig and the Angry Inch*, *Topdog/Underdog* and *Batch: An American Bachelor/ette Party Spectacle* (2007 Humana Festival). **Other Theatre:** Stage manager for Millbrook Playhouse's *Run for Your Wife*, *Greater Tuna* and *The Syringa Tree*.

MELISSA BLAIR (Production Assistant—*Slasher*) is in her second season at Actors Theatre. **At Actors:** *Rock & Roll: The Reunion Tour*, *A Tuna Christmas*, *The Tempest* and *This Beautiful City* (2008 Humana Festival). **Other Theatre:** Stage manager (HotCity Theatre Company). Ms. Blair holds a B.A. in theatre and dance from Southern Illinois University Edwardsville.

SARA KMACK (Production Assistant—*Wild Blessings*) **At Actors:** *Shipwrecked!*, *Dracula*, *Neighborhood 3: Requisition of Doom* (2008 Humana Festival), *The Unseen* (2007 Humana Festival) and a member of 1998-99 Apprentice/Intern Company. **Off-Broadway:** *Susan and God* (Mint Theatre). **Other Theatre:** Seven shows at the Edinburgh Fringe Festival. Ms. Kmack holds a B.A. from Centre College.

DAVE SLESWICK (Production Assistant—*Under Construction*) is an actor, acrobatic physical performer, producer and stage manager. After graduating from Queensland University of Technology with a B.A., he went on to work as a performer and general manager of Zen Zen Zo Physical Theatre. During his five years there, he participated in the internship program and was involved with *Sub-Con Warrior 2.0* (performer, acrobat); *Dracula* (producer); *Sub-Con Warrior 1* (performer, acrobat and producer); *Those with Lucifer* (stage manager); *An End to Dreaming* (performer); and *Macbeth: As*

Told by the Weird Sisters (performer), which was performed at the 2006 World Shakespeare Congress.

MARGRET FENSKE (Costume Shop Manager) is in her twelfth season with Actors Theatre. Ms. Fenske is a native of Kansas, where she taught K-12 vocal music for 20 years while participating in summer stock theatre. She has worked as a draper with Wichita Music Theatre, Glimmerglass Opera and Cincinnati Playhouse in the Park. She has sung with Sweet Adelines International since 1976 and is an arranger, vocal coach and a regional music faculty member. Favorite Actors Theatre show builds have included *Hotel Cassiopeia* (2006 Humana Festival), *Always...Patsy Cline*, *The Importance of Being Earnest* and *Red Herring*.

MICHAEL J. BOWEN (Technical Director) is excited to return for another season as Technical Director at Actors Theatre. A graduate of Eastern Kentucky University, Mr. Bowen was drawn to the theatre after a multifaceted professional journey in search of a satisfying balance between excellence, craftsmanship and artistic freedom. Having found Actors Theatre to be an excellent and challenging avenue for the pursuit of these professional values, he now moderates his time between theatre business and the responsibilities of being a good husband to his wife, Kristen, and father to his sons, Jake and Joey.

DRAMATURGS

JULIE FELISE DUBINER (*Brink!*; *Ten-Minute Plays*), the resident dramaturg at Actors Theatre, has worked on a crazy number of shows, including *Game On* (2008 Humana Festival), *The As If Body Loop* (2007 Humana Festival), *The Tempest* and *A Christmas Carol*. *Rock & Roll: The Reunion Tour* (a collaboration between Julie, Matt Callahan, Sean Daniels and David Hanbury) played this winter at Actors. She has freelanced for the O'Neill, Defiant, blue star, Steppenwolf and others. Ms. Dubiner holds degrees from Tufts and Columbia and has taught at University of Evansville, Walden Theatre, University of the Arts and elsewhere. She is a Board Member of the Literary Managers and Dramaturgs of the Americas and is the lead mentor for their Early Career Dramaturgs program.

ADRIEN-ALICE HANSEL (*The Hard Weather Boating Party*; *Wild Blessings*) is director of new play development at Actors Theatre, where she heads the literary department. She has served as

production dramaturg on roughly 40 plays at Actors, including *Hedwig and the Angry Inch*, *A Raisin in the Sun*, *Spunk*, *9 Parts of Desire*, *The Crucible* and *Underneath the Lintel* and the Humana Festival premieres *Becky Shaw* and *This Beautiful City* (2008 Humana Festival), *The Unseen* and *Batch* (2007 Humana Festival), *Act a Lady* and *Hotel Cassiopeia* (2006 Humana Festival), *The Shaker Chair* and *A Nervous Smile* (2005 Humana Festival), *The Ruby Sunrise* (2004 Humana Festival) and *Cabin Pressure* (1999 Humana Festival). She is co-editor of six anthologies of plays from Actors Theatre and holds an M.F.A. from the Yale School of Drama. Ms. Hansel currently serves on the board of the Kentucky Foundation for Women, which promotes social justice by funding feminist art.

MORGAN JENNESS (*Ameriville*) spent over a decade at the New York Shakespeare Festival/Public Theater as literary manager, director of play development and associate producer. She was also associate artistic director at New York Theater Workshop and associate director at Los Angeles Theater Center in charge of new projects. She has worked with Young Playwrights Festival, Mark Taper Forum, The Playwrights' Center, Bay Area Playwrights Festival, New York Stage and Film, CSC, Victory Gardens, Hartford Stage and Center Stage. She has taught at several universities and is currently on the adjunct faculty at Fordham University. In 1998 Ms. Jenness joined Helen Merrill Ltd. Agency and currently holds a position in the literary department at Abrams Artists Agency. In 2003, Ms. Jenness was presented with an Obie Award Special Citation for Longtime Support of Playwrights.

SARAH LUNNIE (*Under Construction*) is the literary fellow at Actors Theatre. This season she served as production dramaturg on *Pride and Prejudice* and the Apprentice Company's *The Tens* (*27 Ways I Didn't Say "Hi" to Laurence Fishburne and 3:59am*). She holds a B.A. in English and theatre from Boston College.

AMY WEGENER (*Absalom*; *Slasher*) is the literary manager at Actors Theatre. She returned to Louisville in 2007 following four seasons as literary manager at the Guthrie Theater, where her dramaturgy credits included work on new plays by Julie Marie Myatt, Courtney Baron, Kirsten Greenidge, Dan Dietz, Madeleine George and Kelly Stuart, among others. She previously held several positions in Actors' literary department from 1997 to 2003. **At Actors:** Numerous shows during eight

seasons and Humana Festivals, including *Great Falls* and *Neighborhood 3* (2008 Humana Festival), *a.m. Sunday* (2002 Humana Festival), *Description Beggared; or the Allegory of WHITENESS* (2001 Humana Festival) and *God's Man in Texas* (1999 Humana Festival). She has co-edited ten published anthologies and frequently worked with The Playwrights' Center while in Minneapolis. Ms. Wegener is a graduate of Princeton University and holds an M.A. from Northwestern University.

CASTING

ALAINE ALDAFFER CASTING (*Slasher*) Casting director for Playwrights Horizons. Credits include *Grey Gardens*. **Broadway:** Casting associate for *A Raisin in the Sun*. **Television:** *Knights of Prosperity aka Let's Rob Mick Jagger* (ABC). Associate credits include *Ed* (NBC) and *Monk* (USA). Ms. Aldarree has cast projects for Huntington Theater Company in Boston and Women's Project & Productions in N.Y.

DAVID CAPARELLIOTIS (*Absalom*) recently opened MelCap Casting with partner Mele Nagler and continues in his role as casting director at Manhattan Theatre Club. Notable credits include John Patrick Shanley's *Doubt* and *Defiance*, David Lindsay-Abaire's *Rabbit Hole*, David Harrower's *Blackbird* and Donald Margulies' *Sight Unseen* and *Brooklyn Boy* (Manhattan Theatre Club). **Other Theatre:** *Shockheaded Peter*, *Altarboyz*, *The Great American Trailer Park Musical*, *Modern Orthodox* (dir. James Lapine), *Lifegame* and *The Subject was Roses* (Timmy; the Kennedy Center). **Off-Broadway:** The national tour companies of Jonathan Larson's *Tick Tick Boom*. MelCap is currently casting for Williamstown Theatre Festival (2008 summer season), Atlantic Theatre Company, Second Stage Theatre, The Goodman Theatre, Alley Theatre and ARS NOVA.

VINCE LIEBHART CASTING (*The Hard Weather Boating Party*) **At Actors:** *The Scene* (2008 Humana Festival) and *Orange Lemon Egg Canary* (2003 Humana Festival). **Regional Theatre:** *Passion Play* (Goodman Theatre), *The Provok'd Wife*, *Dido*, *Queen of Carthage* (American Repertory Theatre), *Danton's Death* (Alley Theatre), *Family Stories*, *Swimming in March*, *Amazons/Imperialists* (Market Theatre) and *Oklahoma City* (Theatre Offensive). **Off-Broadway:** *The Scariest*, *The Attic*, *Cyclone*, *Smashing*, *Texarkana Waltz*, *Trueblinka*, #11 (*Blue*

& White), *Isn't It Romantic* and *Stomp*; *Savannah Bay*, *The Winter's Tale*, *Ghosts*, *The Underpants*, *Monster*, *Race*, *Naked*, *The Alchemist*, *Look Back in Anger*, *The Misanthrope* and *Hurricane* (Classic Stage Company). New York Stage and Film 2001 to 2003. Tours include *1000 Airplanes on the Roof* and *The Mysteries And What's So Funny?* (Bessie Award for Best Ensemble Cast). **Films:** *Brother to Brother*, *Revolution #9*, *Ordinary Sinner* and *Company K*. **Television:** *As The World Turns* (Artios Award).

THEATRE COMPANY/ PRODUCTION

SITI COMPANY is an ensemble theatre company whose three ongoing components are the creation of new work, the training of theatre artists and a commitment to international collaboration. SITI was founded in 1992 by Anne Bogart and Tadashi Suzuki to redefine and revitalize contemporary theatre in the United States through an emphasis on international cultural exchange and collaboration. SITI believes that contemporary American theatre must necessarily incorporate artists from around the world and learn from the resulting cross-cultural exchange of dance, music, art and performance experiences. One of the most important aspects of SITI's work is the teaching of the Viewpoints and the Suzuki Methods of Actor Training to theatre artists throughout the United States and the world.

INTERN COMPANY

NICOLE BUKOWSKI (Costume) **At Actors:** *Rock & Roll: The Reunion Tour*. Ms. Bukowski is in her third year at University of Cincinnati in the design track of fashion design.

LESLIE COBB (Stage Management/Production Assistant—*Brink!*) **At Actors:** *Glengarry Glen Ross*, *Pride and Prejudice*, *A Christmas Carol* and *Match Games*. **Other Theatre:** *Company* and *Doubt* (University of Evansville Theatre); and *42nd Street*, *West Side Story*, *Brigadoon* and *Willy Wonka* (Broadway at Iroquois).

JESSIE COMBEST (Properties) **At Actors:** *Pride and Prejudice*, *Match Games*, *Dracula* and *Shipwrecked!* **Other Theatre:** She spent the past summer working as a properties intern for Janiec Opera Company at the Brevard Music Center. Ms. Combest holds a B.A. from Brevard College.

NATHAN GREEN (Directing Assistant—*Slasher*; *Brink!*) **At Actors:** Assistant director on four main-stage shows and director/collaborator on Apprentice Company Solo Mios and The Ensemble Project. **Other Theatre:** He has created/directed site-specific ambulatory spectacles with Fish & Bicycle Theatre of Atlanta and has worked with Out of Hand Theater. Mr. Green graduated from Emory University.

JOHN BEN LACY (Lighting) holds a B.A. in dramatic arts from Centre College in Danville, Ky., and has since been pursuing a career as a lighting designer in film, television and theatre.

STEPHANIE LAWSON (Artistic Management) Theatre administration experience includes two seasons as production manager for Kentucky Shakespeare Festival and an arts administration internship with Mason Street Warehouse. Ms. Lawson recently graduated from Hope College, where she was active in company management, stage management and house management and was assistant to the director of theatre.

RACHEL LERNER-LEY (Literary/Assistant Dramaturg—*Absalom*; *Under Construction*; *Wild Blessings*; *Brink!*; *Ten-Minute Plays*) is the author of several short plays and one-acts that have been performed throughout her home state of Massachusetts. Previous theatre work includes Barrington Stage Company, Hartford Stage and New York Stage and Film's Powerhouse Apprentice Program. Ms. Lerner-Ley holds a B.A. in theatre from Smith College.

KELSEY DAYE LUTZ (Stage Management/Production Assistant—*Brink!*) received her B.F.A. in technical production from University of North Carolina, Greensboro. **At Actors:** *43 Plays for 43 Presidents*, *A Raisin in the Sun* and stage manager for Apprentice Company's *The Tens*. **Other Theatre:** *Sweeney Todd* and *Macbeth*.

JULIE MERCURIO (Education) has taught over 100 classroom workshops with Actors Theatre's education department. She recently interned with Seattle Children's Theatre, where her students ranged in ages from toddlers to teenagers. Ms. Mercurio is a B.A. candidate at Northeastern University in Boston, Mass., where she studies theatre and elementary education.

JEFFREY MOSSER (Education) previously served as education coordinator, apprentice/intern

production manager and assistant to the producing directors at Great River Shakespeare Festival. He has also toured with National Theatre for Children in *Lights on for Louie* and coordinated and directed a program called Youth Action Theatre by and for high school students.

STOWE NELSON (Sound/Education) is thrilled to be a member of the Apprentice/Intern Company. **At Actors:** Sound design for *27 Ways I Didn't Say "Hi" to Laurence Fishburne*, *Edge Play* and *Roanoke* (Apprentice Company's *The Tens*). Mr. Nelson holds a B.A. from Wake Forest University.

LILA NEUGEBAUER (Directing Assistant—*Ameriville*; *The Hard Weather Boating Party*; *Brink!*) **At Actors:** Assistant director on four mainstage shows and director on *27 Ways I Didn't Say "Hi" to Laurence Fishburne* (Apprentice Company's *The Tens*). **Other Theatre:** Anne Washburn's *Apparition* (performed in an Old Louisville Victorian), *Karen's Party* (a site-specific processional piece, which she also co-devised) and *Edgewise* (Cherry Lane Studio). Ms. Neugebauer holds a B.A. from Yale College.

YINKA OYEKUNLE, (Marketing) whose full name is Adeyinka Odafeme Oyekunle, is currently pursuing a degree in graphic design from Brown Mackie College. He will then complete his B.F.A. at University of Louisville. Mr. Oyekunle is also exploring avenues of artistic expression through classic mediums such as painting, graphite sketch and sculpture.

BRENDAN PELSUE (Literary/Assistant Dramaturg—*Ameriville*; *Slasher*; *The Hard Weather Boating Party*; *Brink!*; *Ten-Minute Plays*) **At Actors:** *A Raisin in the Sun* and *Rock & Roll: The Reunion Tour*. He has also worked with Young Jean Lee's Theater Company in New York. Mr. Pelsue holds a B.A. in literary arts from Brown University. After his internship, he hopes to continue his education and work as a writer.

THOMAS PETER (Marketing) previously interned in marketing with Center Stage in Baltimore. Mr. Peter holds a B.A. in English and drama from Kenyon College, and he also studied at the Shakespeare Theatre of New Jersey and the British American Drama Academy.

EVAN PRIZANT (Costume) returns to Actors Theatre after appearing in *Peter Pan* and *The Adding Machine* in his youth. **Other Theatre:**

Off-off Broadway designs include *End of the World Love Song* (The Flea), *Spanish Wives* (The Looking Glass), *The Hairy Ape* (Columbia) and *Unrestricted Acts* (The Kraine). Mr. Prizant regularly teaches and directs at Walden Theatre and holds a B.A. from Tulane University.

JILLIAN SPENCER (Production Management) is working on a B.S. in theatre at University of Louisville, where she was the undergraduate production manager their Studio Theatre. **Other Theatre:** Stage management with University of Louisville, Specific Gravity Ensemble, Leeds Theatre and University of Kentucky.

VANESSA STREETER (Costume) **Other Theatre:** Santa Fe Opera (wig and make-up), Hot Summer Nights (costume design), Burning Coal Theatre Company (costume design) and University of South Carolina (costume design, wigs and make-up). **Additional Credits:** Ms. Streeter holds an M.F.A. in costume design from University of South Carolina.

CADI THOMAS (Stage Management) **At Actors:** *Dracula*, *A Christmas Carol* and The Ensemble Project (Apprentice Company). A native of Mandeville, La., she spent the last two summers working at Totem Pole Playhouse. Ms. Thomas holds a B.A. in theatre from Louisiana State University.

ASSISTANTS

MIKE BROOKS (Directing Assistant—*Absalom*) **At Actors:** *These Three Here*, *Saving Face*, *WORK*, *I Stole a Swan Boat Once...* and *Good Girl*. Directing assistant for *Crimes of the Heart*, *As You Like It* and *All Hail Hurricane Gordo* (2008 Humana Festival). Upcoming credits include *Lovers and Other Strangers* (Necessary Theatre, summer 2009). Mr. Brooks serves as Actors Theatre's manager of foundation and government relations.

ALICIA DHYANA HOUSE (Directing Assistant—*Under Construction*) holds a B.A. from San Francisco State University and is currently an M.F.A. candidate in directing at Columbia University. Ms. House is the recipient of the Richard Rodgers Fellowship and Rose Biller Scholarship and in 2008 received a Kennedy Center Directing Fellowship. Assistant directing work includes Sir Peter Shaffer's *Equus* for Broadway.

JACOB STOEEL (Directing Assistant—*Wild Blessings*) works to enrich the lives of youth through the power of theatre. **At Actors:** Director and teacher of *The Lincoln Project*, New Voices Play Writing, Actors in the Classroom and Young Critics. Mr. Stoeel has also worked with Long Wharf Theatre and the San Francisco Mime Troupe.

SPECIAL THANKS/ ACKNOWLEDGEMENTS

THE HARD WEATHER BOATING PARTY

The following people were critical to the research for this play, and the playwright is grateful for their generosity and insight: Anne Braden, James Bruggers, Monica Burkhead, Eboni Cochran, Rev. Louis Coleman, Bob Cunningham, Tim Duncan, Dan Hicks, Mattie Jones, Kenneth Madison, Mozelle Portwood, Renee Murphy, Dave Smith, Marilyn Sommer, Iva Upshaw, Alice Wade and Carla Wallace. An exhibit about their stories and influence on this project can be found at ActorsTheatre.org/Humana_Hardweather.htm.

AMERIVILLE

National Performance Network, Theater Communications Group (TCG), Chay Yew, Morgan Jenness, Harold Norris, Maya Sue, Ann Wager, H-Art Management, Mark Masterson, Actors Theater of Louisville, New York Theatre Workshop, New World Theater, Wesley Montgomery, Teatro Pregones, Elis Finger & Lafayette College, The Sheldon Theater, Tanya Palmer & The Goodman Theatre, Fabian Obispo, NYU Skirball Center, Jazz at Lincoln Center (Rhythm Road), Network of Ensemble Theaters, Chip Walton & Curious Theater, Nick Slie, Kathy Randels, Millicent Johnnie, Jose Torres Tama, Saddi Khali, Mrs. Herreast Harrison and The Guardians of the Flame, Kalamu Ya Salaam, Jim Randels, Students at the Center, Matt Schwartzman and John and Creative Forces (NOLA), Claudia Garofalo, Ashe Cultural Center, M.U.G.A.B.E.E., John O'Neil & Junebug Productions, Sunder Ganglani, Southern Rep., Miriam Weisfeld, Lisa Mount, Helena Presents and Dance Place.

WILD BLESSINGS

Principal photography: Julius Friedman, James Baker Hall, Michael Brohm and Kentucky Show Inc. Projection engineering: Tim Creed/CED. Post-production: Videobred Inc. Wide-Screen Projectors: Christie Digital Systems USA and Graham Smith. Music Consultant: Tom Cunningham.

2008-2009 APPRENTICE/INTERN COMPANY



MATTHEW BALDIGA



JULIA BENTZ



DAVID MICHAEL BROWN



NICOLE BUKOWSKI



ALISON CLAYTON



LESLIE COBB



JESSIE COMBEST



MICHAEL DALTO



ERIC ETEUATI



NATHAN GREEN



AMI JHAVERI



ANNA KULL



JOHNBEN LACY



STEPHANIE LAWSON



RACHEL LERNER-LEY



KELSEY DAYE LUTZ



AARON MATTESON



JULIE MERCURIO



KATHARINE MOELLER



CHRIS MOORE



JEFFREY MOSSER



ALLISON MOY



CLAUDINE MBOLIGIKPELANI NAKO



STOWE NELSON



LILA NEUGEBAUER



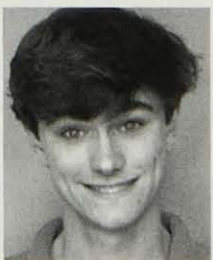
ANDY NOGASKY



NANCY NOTO



YINKA OYEKUNLE



BRENDAN PELSUE



THOMAS PETER



EVAN PRIZANT



LAKEISHA RANDLE



STEVEN RAUSCH



DANIEL REYES



JON RIDDLEBERGER



JILLIAN SPENCER



VANESSA STREETER



CADI THOMAS

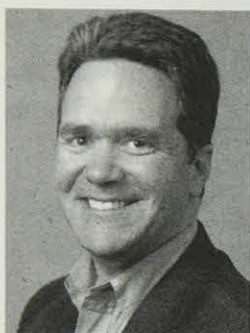


ANNE VEAL



JACOB WILHELM

EXECUTIVE OFFICERS



MARC MASTERSON, ARTISTIC DIRECTOR,

in his ninth season of leadership at Actors Theatre, is an award-winning director specializing in new work and innovative productions of the classics. Actors credits include

Shipwrecked!, *Glengarry Glen Ross*, *The Tempest*, *Mary's Wedding*, *The Crucible*, *Betrayal*, *As You Like It*, *The Importance of Being Earnest* and *Macbeth*. Humana Festival world premieres include *The Unseen*, *Natural Selection*, *The Shaker Chair*, *After Ashley*, *Tallgrass Gothic*, *The Second Death of Priscilla*, *Limonade Tous les Jour* and *Wonderful World*. As a producer, he has brought new artists to Louisville audiences, including playwrights August Wilson, Craig Wright, Theresa Rebeck and dozens of Humana Festival playwrights. Having directed more than 100 professional productions, other favorites include *The Mystery of Irma Vep*, *Compleat Female Stage Beauty* (American Theatre Critics citation 1999) and *Gross Indecency: Three Trials of Oscar Wilde*. An advocate for arts education, Marc was a guiding force in establishing Actors' first Education Department and numerous community outreach efforts. He is dedicated to asserting the prominence of the arts in our culture and spearheading initiatives bringing community-based projects to Louisville, including commissions and site-specific productions. Mr. Masterson earned his M.F.A. from University of Pittsburgh and a B.F.A. from Carnegie Mellon University; he subsequently taught at both universities. Marc currently serves on the Executive Committee of Theatre Communications Group and volunteers at Home of the Innocents. He served as Producing Director of Pittsburgh's City Theatre for 20 years and was founder/chairman of Greater Pittsburgh Arts Alliance as well as board member for Leadership Pittsburgh and a panel member for Pennsylvania Council of the Arts and National Endowment for the Arts. Mr. Masterson won Man of the Year Vectors Award in 1998 and received the Lifetime Achievement Award from Pittsburgh New Works Festival. He is married to Patricia Melvin, and they have two daughters—Laura and Alex.



JENNIFER BIELSTEIN, MANAGING DIRECTOR.

Ms. Bielstein joined Actors Theatre of Louisville in the fall of 2006. She is on the board of the National Corporate Theatre Fund, is Vice President of the Arts

and Cultural Attractions Council, is a member of the 2008 Leadership Louisville class and recently served as a review panelist for the National Endowment for the Arts. Ms. Bielstein received the honor of being voted *Today's Woman* magazine's Most Admired Woman in the Arts and was acknowledged in both *Louisville Magazine's* 15 Metro People to Watch and *Business First's* 40 under 40. Ms. Bielstein moved from Chicago, Illinois, where she served as the Executive Director of Writers' Theatre. During her tenure there, Ms. Bielstein opened a second venue and more than doubled the operations of the company, including the programming, audiences and revenues. Previously, she worked as the Director of Marketing and Communications for Steppenwolf Theatre Company, where she was responsible for almost \$6 million in annual revenues through ticket sales. Ms. Bielstein also worked for About Face Theatre, Northlight Theatre, Apple Tree Theatre and Lincoln Park Zoo, where she helped to create and launch the successful *Jammin' at the Zoo* series in 1994. Ms. Bielstein served as an officer of the Board of the League of Chicago Theatres representing 200 area theatres and as chair of the League's Marketing Committee, through which she spearheaded the development of *Theatre Thursdays*, a city-wide program to introduce new audiences to theatre. She was also on the boards of the Glencoe Chamber of Commerce and About Face Theatre, was Secretary of the Producers Association of Chicago-Area Theatres and served as a grants review panelist for the Chicago Department of Cultural Affairs. Ms. Bielstein is a graduate of the University of North Carolina at Chapel Hill in business administration and theatre.

CORPORATE SUPPORT

Thank you to the following corporations, foundations and government agencies that provide operating and special support for Actors Theatre of Louisville during the 2008-2009 season. Please note that the list below reflects gifts received as of August 2008.

PRESIDENTS CIRCLE

Brown-Forman Corporation
Fund for the Arts
Partnership for Creative Economics
The Humana Foundation

PRODUCERS CIRCLE

Kentucky Arts Council
Yum! Brands Inc.

DIRECTORS CIRCLE

C. E. and S. Foundation, Inc.
Fifth Third Bank
Louisville Metro Government

BENEFACTORS

Chase
Clark & Riggs Printing
The Galt House Hotel and Suites
National Corporate Theatre Fund
National Endowment for the Arts
Texas Roadhouse
The Hearst Foundation Inc.

GUARANTORS

D. D. Williamson & Co., Inc.
Genlyte Group
Greenebaum, Doll & McDonald
Hubbuck & Co.
J.J.B. Hilliard Lyons
Kentucky Department of Tourism
Norton Foundation
Publishers Printing Co., Inc.
Republic National Distributing Company of Kentucky
Sypris Solutions Inc.
The Courier-Journal

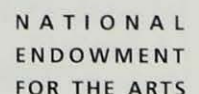
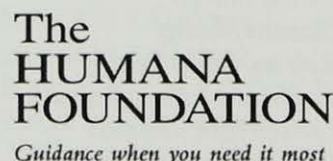
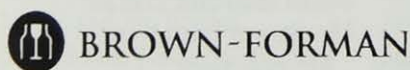
SUPPORTERS

Enterprise Rent-a-Car
E.ON
McCarthy Strategic Solutions, LLC
Paradis Foundation
PricewaterhouseCoopers LLP
Republic Bank
Stites and Harbison, PLLC
Stock Yards Bank And Trust Company
Councilman David Tandy

Todd Investment Advisors, Inc.
Western and Southern Life Financial

PARTNERS

Bearno's Pizza
Chick-Fil-A
Councilman Robin Engel
Councilwoman Judy Green
Councilwoman Cheri Bryant Hamilton
Hard Rock Cafe
Hillerich & Bradsby
Councilman James Peden
Residence Inn
Residence Inn Downtown
Sam Swope Automotive Group, Inc.
Councilman Barbara Shanklin
Sign-A-Rama Downtown
Councilman George Unseld
Councilwoman Mary Woolridge



OUR VISION

Purpose Bring people together through live theatre to celebrate, challenge and explore who we are.

Values For Actors Theatre of Louisville and its organization, audience and community, we value: Creativity, Collaboration and the Human Experience.

Vision We bring astonishing experiences to our local, national and international audiences, who cannot imagine Louisville without Actors Theatre.

THEATRE STAFF

ARTISTIC DIRECTOR, Marc Masterson
MANAGING DIRECTOR, Jennifer Bielstein

ADMINISTRATION

General Manager.....Jeffrey S. Rodgers
 Human Resources Coordinator.....Cora Brown
 Systems Manager.....Dottie Krebs
 Executive Secretary.....Wanda Snyder
 Administrative Services Coordinator.....Alan Meyer

MARKETING

Director.....Kory P. Kelly
 Manager.....Cathy Colliver
 Communications Coordinator.....Leslie Hankins
 Community Relations Coordinator....Babs W. Freibert
 Media & Publicity Coordinator.....Kyle Shepherd
 Graphics Coordinator.....Matt Dobson
 Festival/Events Manager.....Stephanie Spalding
 Festival Coordinator.....Sarah Rowan
 Group Sales Manager.....Sarah Peters
 Group Sales Assistant Manager.....J. Stephen Smith
 Outbound Sales Manager.....Lynda Sylvester
 Outbound Sales Assistant Manager.....Jordan Kelsh

DEVELOPMENT

Director.....Schuyler Heuser
 Manager of Patron Relations.....Trish Pugh Jones
 Manager of Foundation and
 Government Relations.....Mike Brooks
 Manager of Corporate Relations.....Terra Leavell
 Manager of Annual Fund.....Heather Franklin
 Coordinator of
 Patron Relations.....Gretchen Abrahamsen
 Coordinator.....Andy Nusz

FINANCE

Director.....Peggy Shake
 Accounting Coordinator.....Erin Bukowski
 Accounting
 Assistant.....Brunhilda Williams-Curington

OPERATIONS

Director.....Mike Schüssler-Williams
 Assistant Manager.....Barry Witt
 Maintenance.....Alan Reed
 Maintenance Electrician.....Chris Clark
 Receptionist.....Chris Bryant
 Housekeeping.....Jessica Brooks, Robert Bryant,
 Pat Duncan, Robert Herron, Jessica Parker,
 Donna Sanders, Sharon Sloan

AUDIENCE SERVICES

TICKET SALES

Director.....Kim McKercher
 Senior Box Office Manager.....Saundra Blakeney
 Training Manager.....Steve Clark
 Subscriptions Manager.....Julie Gallegos
 Senior Customer Service.....Kristy Kannapell
 Customer Service.....Cheryl Anderson, Christie Baugher,
 Alicia Dossett, Christa Kreimendahl, Carol Niehaus

VOLUNTEER AND AUDIENCE RELATIONS

Director.....Allison Hammons
 House Managers.....Adela Chipe, Dana Cooley,
 Elizabeth Cooley, Stephanie Lawson,
 Kyle Sawyer-Dailey, Cory Vaughn
 Coat Check Attendants.....Tanisha Johnson,
 Rachael Lerner-Ley, Lila Neugebauer,
 Brendan Pelsue, Thomas Peter

ARTISTIC

Associate Artistic Director.....Sean Daniels
 Associate Director.....Zan Sawyer-Dailey
 Artistic Manager.....Emily Ruddock
 Company Manager.....Dot King

LITERARY

Director of New Play Development...Adrien-Alice Hansel
 Literary Manager.....Amy Wegener
 Resident Dramaturg.....Julie Felise Dubiner
 Literary Fellow.....Sarah Lunnier

RESIDENT DESIGNERS

Scenic Designer.....Paul Owen
 Costume Designer.....Lorraine Venberg
 Properties Director.....Mark Walston
 Lighting Designer.....Brian J. Lilienthal
 Sound Designer.....Matt Callahan

EDUCATION

Director.....Steven Rahe
 Coordinator.....Jacob Stoebe
 New Voices Playwriting Coordinator.....Lee Look
 Teaching Artists.....Liz Fentress, Jessica Leader

PRODUCTION

Production Manager.....Kathleen Kronauer
 Assistant Production Manager.....Paul Werner
 Production Stage Manager.....Paul Mills Holmes
 Resident Stage Manager.....Debra Anne Gasper

Thanks to you . . .
We're one of America's
TOP TEN
BEST BANKS!

**REPUBLIC
BANK**

www.republicbank.com
Member FDIC

BANK DIRECTOR[®]
M A G A Z I N E

Source: Sandler O'Neil and Partners, L.P. as published in "Bank Director Magazine | 1st Quarter 2009"

THEATRE STAFF

SCENIC

Technical Director..... Michael J. Bowen
 Assistant Technical Directors..... Justin Hagovsky,
 Alexis Tucker
 Technical Production Assistant Rebecca Price-Sanders
 Shop Foreman Marshall Spratt
 Carpenters Charles Ames, Braden Blauser,
 Noah Johnson, Javan Roy-Bachman, Pierre Vendette
 Stage Operations Supervisor..... Emily Meyer
 Deck Carpenter Seth Holder
 Design Assistant..... Brenda Ellis
 Scenic Charge Kieran Wathen
 Scenic Artist..... Ron Temple
 Journeyman..... Ryan Harvey*

COSTUME

Shop Manager Margret Fenske
 Assistant to Designer Emily Ganfield
 Crafts..... Shari Cochran
 Drapers..... Kelly Gassert, Shana Lincoln
 First Hand..... Karen Merrill
 Technicians..... Christi Johnson,
 Bonnie Jonus, Mary Lee Younger
 Wig Master/Designer..... Heather Fleming
 Pamela Brown Wardrobe Mistress ... Angela Marie Logsdon
 Bingham Theatre Wardrobe Mistress..... Cristy Smith
 Victor Jory Wardrobe Mistress..... Jade Biviano
 Journeyman Lindsay Chamberlin*
 Wardrobe Technician..... Lisa Snee

LIGHTING

Supervisor Paul Werner
 Associate Supervisor..... Nick Dent
 Assistant Master Electrician Lauren Scattolini
 Deck Electrician..... Rob Brodersen
 Board Operators/Swing Electricians..... Danielle Clifford,
 Alexandra Manuel, Derek Miller

SOUND

Associate Designer..... Benjamin Marcum
 Engineer Paul Doyle
 Technicians..... Jessica Collins, Mareth Griffith, Jacob Rosene

PROPERTIES

Masters..... Doc Manning, Alice Baldwin
 Carpenter..... Joe Cunningham
 Artisans William Griffith, Scott Rygalski
 Soft Goods Artisan..... Heather Jakubisin
 Journeymen Elliot Cornett*, Taj Whitesell*

VIDEO

Media Technologist Phillip Allgeier

APPRENTICE/INTERN COMPANY

Director Michael Legg
 Assistant Director..... Amy Attaway

APPRENTICES

Matthew Baldiga, Julia Bentz, David Michael Brown,
 Alison Clayton, Michael Dalto, Eric Eteuati, Ami
 Jhaveri, Anna Kull, Aaron Matteson, Katharine Moeller,
 Chris Moore, Allison Moy, Claudine Mboligikpelani
 Nako, Andy Nogasky, Nancy Noto, LaKeisha Randle,
 Steven Rausch, Daniel Reyes, Jon Riddleberger, Anne
 Veal, Jacob Wilhelmi

INTERNS

Artistic Management..... Stephanie Lawson
 Marketing..... Yinka Oyekunle, Thomas Peter
 Directing Nathan Green, Lila Neugebauer
 Literary..... Rachel Lerner-Ley, Brendan Pelsue
 Education Julie Mercurio, Jeffrey Mosser
 Production Management Jillian Spencer
 Stage Management..... Leslie Cobb,

Kelsey Daye Lutz, Cadi Thomas

Costume Nicole Bukowski,
 Evan Prizant, Vanessa Streeter

Lighting..... JohnBen Lacy

Sound Stowe Nelson

Properties Jessie Combost

USHER CAPTAINS

Dolly Adams, Marie Allen, Chuck and Libba Bonifer,
 Tanya Briley, Maria and Pernell Brown, Maleva
 Chamberlain, Donna Conlon, Terry Conway, Doris
 Elder, Joyce French, Tom Gerstle, Bill and Vieta
 Gravely, Marilyn Huffman, Sandy Kissling, Barbara
 Nichols, Teresa Nusz, Judy Pearson, Nancy Rankin,
 Bob Rosedale, Christina Sauer, Christopher Thompson,
 Tim Unruh, David Wallace

Actors Theatre's company doctors:

Dr. Andrew Mickler, F.A.C.S.

Dr. Edwin Hopson, DC, CSCS

Dr. April Hopson, DC

Dr. Bill Breuer, MCH, DC, FAPHP

*Paul Owen Fellow

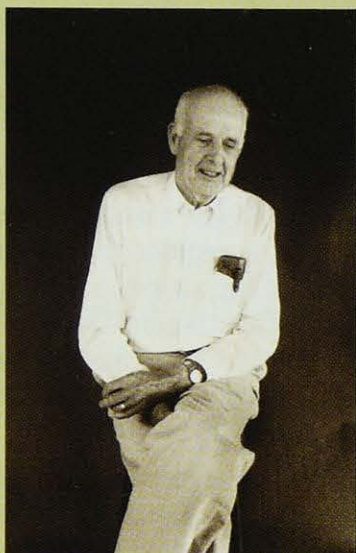
Actors Theatre of Louisville was founded in 1964 by
 Richard Block in association with Ewel Cornett. Jon Jory
 was Producing Director from 1969 to 2000. Alexander
 Speer, Executive Director, ended his 40-year tenure at
 Actors Theatre in 2006.

Set Decoration

AESTHETICS IN JEWELRY

410 W. CHESTNUT • SUITE 634 • LOUISVILLE, KY • 502.589.2728 • FAX: 502.589.0209

THE GALLERY AT ACTORS



James Baker Hall
Wendell Berry, 2002
giclee print from original silver gelatin print
24" x 32"

PHOTO ESSAY

BASED ON THE WRITINGS OF
WENDELL BERRY

MARCH 3 — APRIL 26

James Baker Hall

Former Kentucky poet laureate, James Baker Hall has published many books of poetry and fiction. Hall has also been a working art photographer most of his adult life. Presently, a retrospective of his work is up at 21C Museum in Louisville. He has also published a number of photography collections, including one with Wendell Berry, *Tobacco Harvest: An Elegy*. Hall and Berry have been close friends since the 1950s and Hall's photographs of Wendell Berry span his entire life.

Guinever Smith

Smith's work has been in various solo shows and exhibitions throughout Kentucky. This series focuses on creating the sensation of walking through the woods. By limiting herself to black and white, Smith was able to focus on the use of line, value, light and texture as means for description.




Lobby design and festival decorations
provided by Kevin Troxall.

Visit Actors during the First Friday Gallery Hop.

ACKNOWLEDGEMENTS



actors theatre of louisville

- Is a member of the Fund for the Arts. 
- Is supported in part by a grant from the National Endowment for the Arts, a federal agency, in Washington, D.C.
- The Kentucky Arts Council, a state agency in the Tourism, Arts and Heritage Cabinet, provides operational support funding for Actors Theatre of Louisville with state tax dollars and federal funding from the National Endowment for the Arts, which believes that a great nation deserves great art. 
- Thriving arts programs and diverse cultural activities are part of the fabric that makes Louisville a great community to live in. Louisville Metro Government is proud to play a role in supporting Actors Theatre of Louisville. 
- Is a member of Arts Kentucky and American Arts Alliance.
- Receives general operating support from The Shubert Foundation, Inc., the philanthropic arm of The Shubert Organization, which owns and/or operates 21 theatres in New York and various cities in the United States.
- Is part of the Leading National Theatres Program, a joint initiative of The Doris Duke Charitable Foundation and The Andrew W. Mellon Foundation.
- William McNulty and Actors Theatre of Louisville are participants in the Fox Foundation Resident Actors Fellowships, funded by the William and Eva Fox Foundation and administered by Theatre Communications Group.
- Special thanks to the Harold and Mimi Steinberg Charitable Trust for supporting the development of new plays at Actors Theatre.
- All programs, activities and services are provided equally without regard to race, color, religion, national origin, age, sex, sexual orientation or disability.