



it's about being moved



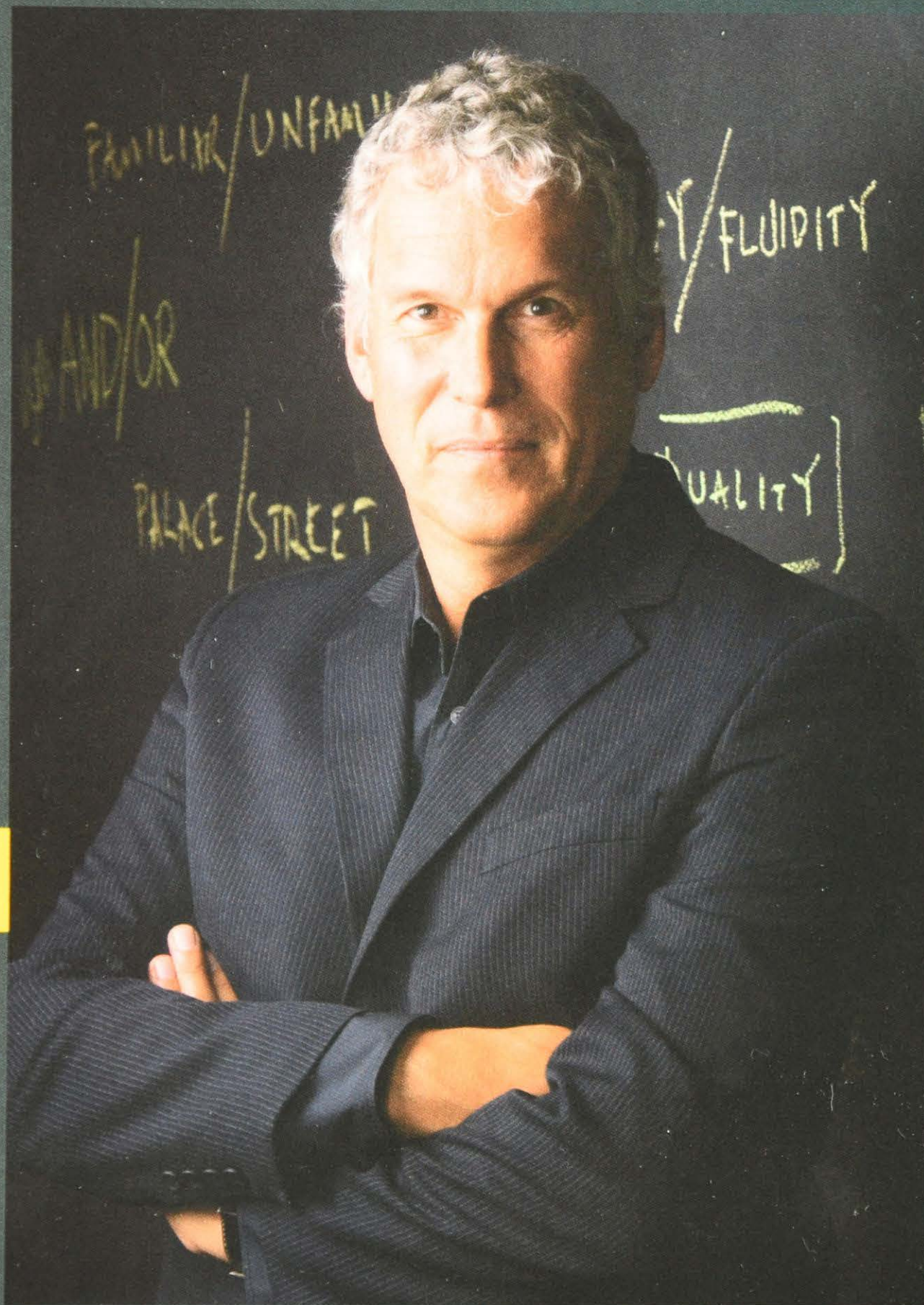
COLLEGE OF FINE AND APPLIED ARTS  
UNIVERSITY OF ILLINOIS AT URBANA-CHAMPAIGN





and as simple as being still.





## Welcome to Krannert Center for the Performing Arts.

Since its celebrated opening nearly four decades ago in 1969, Krannert Center has been recognized as the premier university-based performing arts complex in the country. Its stages have been graced by the world's most beloved master artists, emerging prodigies, and leading innovators. Its audiences stretch across all walks of life. Its history is one of the most surprising and inspiring in the modern era of international performance. And its future is bright.

As classroom, laboratory, and public square, Krannert Center is dedicated to the interrelated pursuits of excellence, discovery, and the open mind. Every season is imagined with these core goals—and your experience—in mind.

You are at the heart of the Krannert Center story. Dig in. Experience the Center fully. And move with us into a brilliant future.

All good things to you and yours,



THE CAMPAIGN FOR THE  
UNIVERSITY OF ILLINOIS  
AT URBANA-CHAMPAIGN



COLLEGE OF FINE AND APPLIED ARTS  
UNIVERSITY OF ILLINOIS AT URBANA-CHAMPAIGN



## BEING MATTERS.

Krannert Center for the Performing Arts is dedicated to the advancement of education, research, and public engagement through the pursuit of excellence and innovation in the performing arts.

Embracing the art of the past as well as the art of our time, the Center supports the belief that creativity is a core human characteristic and that the arts hold uniquely transformative potential.

Through its multiple and integrated roles as classroom, laboratory, and public square, Krannert Center serves as a touchstone for the exploration and expansion of human experience.

# FUSE



KRANNERT CENTER FOR THE PERFORMING ARTS  
College of Fine and Applied Arts  
University of Illinois at Urbana-Champaign



The Leading College and University Presenters Program of the **Doris Duke Charitable Foundation** provides endowment and current use support for the creation of boundary-pushing new work, increases cross-cultural understanding through the arts, and strengthens collaborative interdisciplinary partnerships across the University.

The **Andrew W. Mellon Foundation** provides financial support to increase cultural understanding and greater awareness of the creative process among students campus-wide.

Through the **Swanlund Initiative for the Performing Arts**, the University of Illinois provides major financial, technological, facility, and human resources support to projects significant for their creative breakthrough potential. The **Center for Advanced Study** partners with Krannert Center to foster awareness, discourse, and understanding of the relationships between the arts, culture, and contemporary society. The **Frances P. Rohlen Visiting Artists Fund/College of Fine and Applied Arts** provides support to enhance curricular, cross-disciplinary experiences with Krannert Center visiting artists.

Krannert Center Marquee performances are made possible by generous donations from individual and corporate sponsors to the **Marquee Endowment** and the **Marquee Fund**.

Marquee performances are also supported in part by the **National Endowment for the Arts**, the **Illinois Arts Council**—a state agency that recognizes Krannert Center in its Partners in Excellence Program—**Arts Midwest**, and the **New England Foundation for the Arts**.

**40 North/88 West** and Krannert Center—we're working together to put Champaign County's culture on the map.



**ANNE BOGART'S SITI COMPANY**

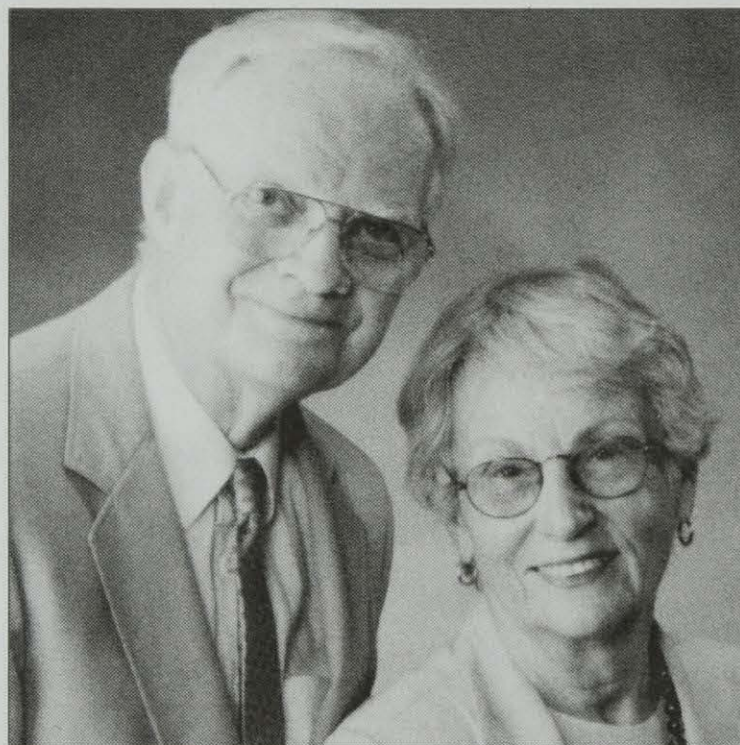
*Under Construction* | Saturday, April 25, 2009 | 7:30pm  
*Who Do You Think You Are* | Tuesday, April 28, 2009 | 7:30pm  
Colwell Playhouse



SEASON PATRON GIFTS Krannert Center thanks these individuals for their generous gifts to support Marquee programs throughout the entire season. We deeply appreciate their concern for and commitment to the cultural life of this entire region.

---

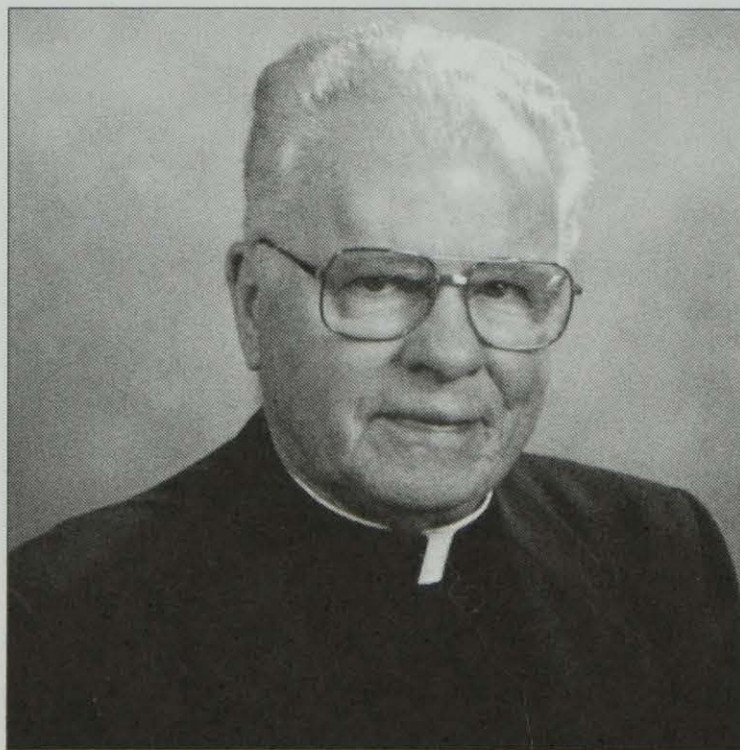
## Chamber Series Sponsors



JEAN AND HOWARD OSBORN

## Campaign for Young Audiences

The Campaign for Young Audiences allows Krannert Center to keep youth ticket prices affordable so that today's young people (pre-K through college) may experience firsthand the power of live performance.



MONSIGNOR EDWARD J. DUNCAN



PHYLLIS AND KYLE ROBESON





**KRANNERT CENTER INITIATIVES** Krannert Center professes the deep value of the arts to the fulfillment and well-being of families, communities, and societies. Through these initiatives, we strive to engage the richest possible audience with powerful experiences.

---

#### Creative Intersections

Krannert Center's Creative Intersections program offers audiences ways to explore the arts and to interact with the artists who perform on Krannert Center stages. From lectures/demonstrations and discussions to hands-on workshops, they bring the performing arts to life and to mind in intriguing, often highly personalized ways.

**2008-2009 Creative Intersections Sponsor**  
**The News-Gazette**

#### Youth Series

Each season, Krannert Center's Youth Series serves thousands of children preschool age through grade 12. This series showcases performing arts experiences of all genres, including dance, theatre, and music. The Youth Series provides our region's young people with the opportunity to experience live performing arts, which will improve and enhance their lives, their general curriculum, and their creativity.

**2008-2009 Youth Series Sponsors**  
**Kraft Foods**



Written by Charles L. Mee  
Directed by Anne Bogart  
Created and Performed by SITl Company

**Ensemble**

Akiko Aizawa  
J. Ed Araiza  
Leon Ingulsrud  
Ellen Lauren  
Tom Nelis  
Barney O'Hanlon  
Makela Spielman  
Samuel Stricklen  
Stephen Webber

Time and place: America in the 1950s and the present, the red states and the blue states, where we grew up and where we live today

Set Design	Neil Patel
Costume Design	James Schuette
Lighting Design	Brian H. Scott
Sound Design	Darron L West
Property Master	Marc Walston
Company Manager	Elizabeth Moreau
Production Stage Manager	Dave Polato
Production Assistant	Dave Sleswick
Sound Engineer	Asa Wember
Dramaturg	Sarah Lunnie
Assistant Director	Alicia Dhyana House
SITl Executive Director	Megan Wanlass Szalla

The actors and stage managers employed in this production are members of Actors' Equity Association, the union of professional actors and stage managers in the United States.

The designers are members of United Scenic Artists (USA).

Anne Bogart is a member of SSDC, the Society of Stage Directors and Choreographers Inc., an independent national labor union.

*Under Construction* was commissioned by the Actors Theatre of Louisville for the Humana Festival of New American Plays and is presented in association with SITl Company with support from the Andrew W. Mellon Foundation; the New York Theater Program, administered by the New York Foundation for the Arts; and the National Endowment for the Arts.

Special thanks go to the Guthrie Theatre for early development support of this project. The script was posted on the Internet and people were invited to contribute to scenes from the play, although none of these suggestions has been incorporated into the final script. The development process continues, as the script remains on the Internet for others to take and remake as they will.



Conceived and Directed by Anne Bogart  
Created and Performed by SITl Company

**Ensemble**

Gunda	Akiko Aizawa
Jorge	J. Ed Araiza
Bruno	Will Bond
Paul	Leon Ingulsrud
Marie	Ellen Lauren
Eric	Barney O'Hanlon

Set and Costume Design	James Schuette
Lighting Design	Brian H. Scott
Sound Design	Darron L West
Company Manager	Elizabeth Moreau
Production Stage Manager	Dave Polato
Production Assistant	Dave Sleswick
Sound Engineer	Asa Wember
Assistant Directors	Peron Yousefzadeh Elizabeth Widmer
Playwriting Intern	Nick Norman
SITl Executive Director	Megan Wanlass Szalla

The actors and stage managers employed in this production are members of Actors' Equity Association, the union of professional actors and stage managers in the United States.

The designers are members of United Scenic Artists (USA).

Anne Bogart is a member of SSDC, the Society of Stage Directors and Choreographers Inc., an independent national labor union.

*Who Do You Think You Are* was commissioned by Arizona State University Gammage and the Wexner Center for the Arts at The Ohio State University and by SITl Company with support from the Leading National Ensemble Theatres Program, a joint initiative of the Doris Duke Charitable Foundation and the Andrew W. Mellon Foundation, and additional support from the National Endowment for the Arts, the USA Rockefeller Fellow Award, and public funds from the New York City Department of Cultural Affairs.

**Director's Notes**

How does the vast labyrinth—the systems and the layers of chemical, muscular, and neuronal activity—inform our tiniest interaction? When we begin to examine the chemistry of emotion, thought, and action, does our own scrutiny alter the emotion, the thought, or the action? When studying the mind, does the mind study you? These questions prompted the creation of our company-devised work *Who Do You Think You Are* (The Brain Project). Our task is to construct a play that simultaneously suggests the complexity of human experience while celebrating its elegance and simplicity.



## SITI COMPANY

---

SITI Company is an ensemble-based theatre company led by Anne Bogart. Its mission is:

- To create bold new productions;
- To perform and tour these productions nationally and internationally;
- To train together consistently;
- To train theatre professionals and students in an approach to acting and collaboration that forges unique and highly disciplined artists for the theatre; and
- To create opportunities for artistic dialogue and cultural exchange.

Founded in 1992 by Anne Bogart and Tadashi Suzuki, SITI Company began as an agreement to redefine and revitalize contemporary theatre in the United States through an emphasis on international cultural exchange and collaboration. Originally envisioned as a summer institute in Saratoga Springs, New York, SITI expanded to encompass a year-round company based in New York City with a summer season in Saratoga. The company is known nationally and internationally as a top-level artistic collective that generates groundbreaking theatre while also training artists from around the world.

In addition to Artistic Director Anne Bogart, SITI Company is composed of nine actors, four designers, a playwright, a stage manager, and an executive director. The company represents a change in thinking about the relationships between artists and institutions. SITI Company has formed relationships with theatres and venues around the world who present the company's work.

SITI recently premiered Virginia Woolf's only play, *Freshwater*, at the Women's Project in New York

City and *Who Do You Think You Are* at Arizona State University Gammage. Other recent works include *Radio Macbeth* at the Wexner Center for the Arts at Ohio State University, *Hotel Cassiopeia* at the Humana Festival of New American Plays at the Actors Theatre of Louisville, and *Intimations for Saxophone* at the Arena Stage in Washington, DC. Future productions include *Soot and Spit*, *Empire of Light*, and *The Seagull*. SITI Company and its members have won numerous awards, including Obies, Drama Desks, EDDYs, and many more.

One of the most important aspects of SITI's work is the teaching of two training techniques to actors and theatre artists throughout the United States and the world. The Viewpoints and the Suzuki Method of Actor Training are two distinct methods of actor training used in building and staging SITI productions. SITI Company members, all of whom have been trained by Anne Bogart and Tadashi Suzuki, are specially qualified to introduce and train other theatre artists in these approaches.

Sign up for our e-newsletter ([www.siti.org](http://www.siti.org)) and join the SEE (SITI Extended Ensemble) Network ([siti.collectivex.com](http://siti.collectivex.com)) or Facebook group—these are all great ways to be kept up to date on what's happening with SITI Company's training, production tours, and events.

SITI Company is: Akiko Aizawa, J. Ed Araiza, Anne Bogart, Will Bond, Leon Ingulsrud, Ellen Lauren, Kelly Maurer, Charles L. Mee Jr., Elizabeth Moreau, Tom Nelis, Barney O'Hanlon, Neil Patel, James Schuette, Brian H. Scott, Megan Wanlass Szalla, Stephen Webber, and Darron L West



---

SITI Company Board of Directors: Gigi Bolt (Interim Chair), Lynn Cohen, Ron Cohen, Martha Coigney, Barbara Olsen Cummings, Lauren Flanigan, Rena Chelouche Fogel, Cherry Jones, Thomas Mallon, and Leonard Perfido

SITI Company Staff and Interns: Megan Wanlass Szalla, Executive Director; Roberta Pereira, Associate Producer, Development and Marketing; David Roberts, Associate Producer, General Management and Programming

Consultants: Ellen Pearre Cason, Accountant; James Harley, Graphic Designer; Thomas Mallon, Attorney; Barbara Janowitz and Michael Ross, Strategic Planning.

Contact Information:

520 8th Avenue  
3rd Floor, Suite 310  
New York, NY 10018  
Phone: 212-868-0860  
Fax: 212-868-0837  
inbox@siti.org  
www.siti.org

Exclusive Worldwide Tour Representation:

H-Art Management, Harold Norris  
481 8th Avenue, Suite 834  
New York, NY 10001  
Phone: 212-868-2134  
Harold@h-artmanagement.com  
www.h-artmanagement.com



---

SITI Company is deeply grateful to the generous donors who are listed below.

## **Individuals**

### **SITI Inner Circle: \$10,000+**

Anne Bogart  
Jeanne Donovan Fisher & Richard B. Fisher  
Joan H. & Robert B. Parker

### **SITI Circle: \$1,000-\$9,999**

Marc Allison & Stephanie Holmquist  
Carolyn Anderson  
Anne Donovan Bodnar  
Tylor Field III  
Rena Chelouche Fogel  
James M. Gillson  
Victoria & Matthias Gohl  
Cherry Jones  
Jeffrey D. J. Kallenberg  
Paul E. Kellogg & Raymond G. J. Han  
Richard Lagravenese  
Charles Mee Jr.  
Ward & Lucy Mooney  
Leonard P. Perfido & Ruth S. Perfido  
Sarah Plimpton  
Joanne Cregg Smith & Daniel C. Smith  
Jean Stein  
Wendy vanden Heuvel  
George R. Wanlass & Karen Carson  
Lorna Wanlass  
Jaan Whitehead

### **Friends of SITI: Up to \$999**

Mary Lou Aleskie, J. Ed Araiza, Ken Barnett,  
Gigi Bolt, Beth Boone, Brad Carlin, Sue & Worth  
Carlin, Ellen Cason, Judith B. Chaffee, Angela  
Chamberlin, Tucker Chase, Katherine Clarvoe,  
Ronald T. Cohen & Lynn Cohen, Martha Coigney,  
Julie Crosby, Barbara & Jim Cummings, Julie Cursi,  
Tove-Lin Dalmau, Suzanne Delle, Acacia Duncan,  
Erma Duricko, Bonnie Eckard, Katie Embree, Dina  
Emerson, Caryl S. Englander, Rebecca Engle, Leslie  
Ferreira, Britton Fisher, Todd M. Fisher, Jeffrey  
Frace, David R. Gammons, Marita Gochman, Judy  
Guido, Annie Hamburger & Ralph Jenner, Nicole  
Borrelli Hearn, Dawn Helsing, Holly Hendrix, Richard  
Hess, Susan Hightower, Jeffrey Hill, Tyson Holmes,  
Karen Brooks Hopkins, Dave Horak, Jen Johansen,  
Thomas A. Juarez, Gabriel Kalomas, Daniel Kaslow,  
Brian Kulick (Classic Stage Company), Fran Kumin  
& Dick Ticktin, Roslyn Leopold, Jane & Dan Lindau,  
Virginia P. Louloudes, William Lynch, Ruth & Romain  
Macomb, Thomas L. Mallon, Catherine & Matt  
Mandel, Kara Manning, Marc Masterson & Patricia  
Melvin, Donnie Mather, Julio Matos, George Mayer,  
Mitchel R. McElya, Patricia Anne Miller, Tina Mitchell,  
Elizabeth Moreau, Wendy Morrill, Adale O'Brien,  
Carol Ockman, Barney O'Hanlon, Jackie O'Hare,  
Flora Plumb, Brian Reid, Sophia Remolde, Joan B.  
Reutershan, KJ Sanchez, Sofia Sequenzia & John M.  
Shostrom, Risa Shoup, Katherine Spelman, Elizabeth  
Spreen, Ruth Sternberg & Liz Rosier, Liz Stott & Erich  
Augenstein, Rebecca Strang, R. Lee Stump, Narcissa  
Titman, Cott Troost & Shannon Fillion, Deborah  
Wallace, Robert & Ann Webber, Micki Wesson, Julia  
Whitworth & Ray Neufeld, Misti Wills, Debra Winger  
& Arliss Howard, Francesca Zambello



---

**Foundation, Government, and Corporate Support**

SITI Company has been selected to take part in Leading for the Future: Innovative Support for Artistic Excellence, a groundbreaking new arts initiative created by the Nonprofit Finance Fund and funded by the Doris Duke Charitable Foundation.

**Patrons: 25,000+**

Carnegie Corporation of New York  
The Andrew W. Mellon Foundation, New York  
Theater Program, administered by the New York  
Foundation for the Arts  
The National Endowment for the Arts  
Public funds from the New York City Department  
of Cultural Affairs  
The Robert Sterling Clark Foundation Inc.

**Benefactors: \$10,000–\$24,999**

The Edith Lutyens and Norman  
Bel Geddes Foundation  
The Fan Fox & Leslie R. Samuels Foundation  
The Jerome Foundation  
The New York State Council on the Arts  
The Shubert Foundation  
The Trust for Mutual Understanding

**Sponsors: \$1,000–\$9,999**

Altria Group Inc.  
Disney Worldwide  
The JKW Foundation  
The Lucille Lortel Foundation Inc.  
The Netherland-America Foundation  
New York Times Company Foundation Fund  
for Midsize Theatres, a project of A.R.T./New York  
Reed Smith LLP  
Tobin Foundation for Theatre Arts

**Supporters: Up to \$999**

Cason & Company, Centre Group Holdings Ltd.,  
International Creative Management, San Jose  
Repertory Theatre, Time Warner

To become a contributor to SITI Company, call the office at 212-868-0860 or visit [www.siti.org](http://www.siti.org). All donations listed in this program include gifts and pledges received through November 2008.



**Anne Bogart** (Director) is the artistic director of SITI Company, which she founded with Japanese director Tadashi Suzuki in 1992. She is a professor at Columbia University, where she runs the Graduate Directing Program. Recent works with SITI include *Freshwater*; *Who Do You Think You Are*; *Radio Macbeth*; *Hotel Cassiopeia*; *Death and the Ploughman*; *La Dispute*; *Score*; *bobrauschenbergamerica*; *Room*; *War of the Worlds*; *Cabin Pressure*; *The Radio Play*; *Alice's Adventures*; *Culture of Desire*; *Bob*; *Going, Going, Gone*; *Small Lives/Big Dreams*; *The Medium*; Noel Coward's *Hay Fever* and *Private Lives*; August Strindberg's *Miss Julie*; and Charles Mee's *Orestes*. She is the author of three books: *A Director Prepares*, *The Viewpoints Book*, and *And Then, You Act*.

**Charles Mee** (Playwright) has written *Big Love* and *True Love* and *First Love*, *bobrauschenbergamerica* and *Hotel Cassiopeia*, *Orestes 2.0* and *Trojan Women: A Love Story*, and *Summertime* and *Wintertime* among other plays—all of them available on the Internet at [www.charlesmee.org](http://www.charlesmee.org). His plays have been performed at the Brooklyn Academy of Music, the American Repertory Theatre, the New York Theatre Workshop, the Public Theater, Lincoln Center, the Humana Festival of New American Plays at the Actors Theatre of Louisville, Steppenwolf, and other places in the United States as well as in Berlin, Paris, Amsterdam, London, Brussels, Vienna, Istanbul, and elsewhere. Among his other awards, he is the recipient of the gold medal for lifetime achievement in drama from the American Academy of Arts and Letters and of the Richard B. Fisher Award. His work is made possible by the support of Jeanne Donovan Fisher and Richard B. Fisher.

**Akiko Aizawa** (*Under Construction* and *Who Do You Think You Are*) has performed with SITI Company in *Freshwater*, *Who Do You Think You Are*, *Radio Macbeth*, *Hotel Cassiopeia*, *bobrauschenbergamerica*, *A Midsummer Night's Dream*, *Intimations for Saxophone*, *La Dispute*, *War of the Worlds*, *Culture of Desire*, *Nicholas and Alexandra*, and *systems/layers*. His appearances at national theatres and festivals include those at BAM's Next Wave Festival, the Ice Factory at the Ohio Theatre, *Under the Radar* at the Public Theater, the Alabama Shakespeare Festival, the American Repertory Theatre, Arena Stage, the Court Theatre, Krannert Center, the Los Angeles Opera, the New York Theatre Workshop, Portland Stage, the Walker Art Center, the Wexner Center for the Arts, and the Women's Project. His performances at international festivals and venues include those in Edinburgh, Dublin, Bonn, Bobigny, Helsinki, Melbourne, Sydney, Canberra, Bogota, São Paulo, Santiago, Buenos Aires, Tokyo, Toga, and Moscow.

**J. Ed Araiza** (*Under Construction* and *Who Do You Think You Are*) has SITI Company credits that include *Who Do You Think You Are*, *Hotel Cassiopeia*, *A Midsummer Night's Dream*, *systems/layers*, *bobrauschenbergamerica*, *Culture of Desire*, *The Medium*, *Small Lives/Big Dreams*, *War of the Worlds*, and *War of the Worlds—The Radio Play*. His regional theatre acting credits include *The Cure at Troy* at Yale Rep; *Santos and Santos* at the Mixed Blood Theatre; *Keely and Du* at Hartford Stage and the Actors Theatre of Louisville; *1969* and *Picnic* at the Actors Theatre of Louisville; *Yerma* at Arena Stage; *Principia Scriptoria* at A



Contemporary Theatre in Seattle; *Charley Bacon* at the South Coast Repertory; and *King Lear*, *Macbeth*, and *La Victima* at the Los Angeles Theatre Center. His off-Broadway credits include *Orestes* and *Occasional Grace*. He has written *Vaudeville Vanya*, an adaptation of the Chekhov play, and the original plays *Medeaseries*, *C/O The Grove*, and *The House*, all of which he directed in Austin, Texas. He directed his original plays *Where Do I Begin* at Naropa/Colorado, *The Water Project* at Bowdoin College, and *The Lost Project* at the University of Minnesota. Other directing credits include *Lady Leroy* and *One Flew Over the Cuckoo's Nest*. J. Ed has been a movement consultant on several productions at the Juilliard School, including *The Cherry Orchard*, *One Flew Over the Cuckoo's Nest*, *Balm in Gilead*, and *The Greeks*. Most recently, J. Ed directed *bobrauschenbergamerica* at the University of Houston. J. Ed was a member of El Teatro de la Esperanza and is a member of the Dramatists Guild, Austin Script Works, and NoPE.

**Will Bond** (*Who Do You Think You Are*) is a founding member of SITI Company. He has performed and toured nationally and internationally in SITI's *Orestes* (by company member Charles Mee Jr.), *The Medium* (Obie Award winner), *Small Lives/Big Dreams*, *Culture of Desire*, *Bob* (Obie Awards for light and sound and three Drama Desk nominations, including Best Solo Performance of the Year), *War of the Worlds*, *War of the Worlds—The Radio Play*, *Cabin Pressure*, *bobrauschenbergamerica*, *La Dispute*, *Death and the Ploughman*, *Lilith*, *Seven Deadly Sins* (New York City Opera), *Radio Macbeth*, and *Who Do You Think You Are*. He has toured with Tadashi Suzuki and SCOT in *Dionysus* and with Robert Wilson's

*Persephone*. Recent other roles include those in *Macbeth* and *The Lover and Creditors* at the Actors Theatre of Louisville, where he is an associate artist. His regional credits include *Mystery of Irma Vep*, *Greater Tuna*, *Greetings*, *Holiday*, *Night Must Fall*, *Suddenly Last Summer*, *The Tempest*, and *Hamlet*. He is currently artist-in-residence in the theatre department of Skidmore College.

**Leon Ingulsrud** (*Under Construction* and *Who Do You Think You Are*) helped to found SITI Company and has appeared in *Orestes*, *Seven Deadly Sins* (New York City Opera), *Nicholas and Alexandra* (Los Angeles Opera), *bobrauschenbergamerica*, *Who Do You Think You Are*, and *Hotel Cassiopeia*. Before joining SITI, Ingulsrud was a member of the Suzuki Company of Toga for seven years, appearing in *Homage to Homo Ludins*, *King Lear*, *Dionysus*, *Macbeth*, *Ivanov*, and *Greetings from the Edge of the Earth*. During that time, Ingulsrud also served as a resident director at the ATM Arts Center in Mito, Japan. Ingulsrud served two years as the associate artistic director of the Swine Palace in Baton Rouge. His directorial credits include *Endgame*, *The Hairy Ape*, *Macbeth*, *Martini Ceremony*, *Medea*, *Angel/Babel*, *Short Stories*, *The Sea*, *The Grapes of Wrath*, *The Tempest*, *Death of a Salesman*, *Saint Joan*, *Our Town*, *The Laramie Project*, *Eurydice*, *Psyche*, *Callie's Tally*, *Big Love*, *A Show of Force*, *Jamestown*, *Dr. Faust*, and three different, original adaptations of *Moby Dick*. Ingulsrud has taught in workshops and universities around the world and holds an MFA in directing from Columbia University.



**Ellen Lauren** (*Under Construction* and *Who Do You Think You Are*) is the associate artistic director for SITI and has been a company member since 1991. Her New York credits include the New York City Opera, CSC, the New York Theater Workshop, and BAM's Next Wave Festival. Additional festivals include Dublin, Bonn, Bogotá, Bobigny, Melbourne, Edinburgh, and Singapore. She has also appeared at the Wexner Center for the Arts, the Walker Art Center, and Krannert Center. Her regional credits include ART Cambridge, the Actors Theatre of Louisville, the San Jose Repertory Theatre, Stage West, the Milwaukee Repertory Theatre, and the Alley Theatre. She is an ongoing member of the Suzuki Company of Toga, Japan. She has appeared at the Moscow Art Theatre, at the Taganka Theatre, at RSC London, at Theatre Olympics Athens, at the Istanbul Festival, at the Festival Mundial in Chile, in São Paulo, at the Teatro Olimpico Italy, at the Hong Kong Festival, and in Montpellier, France. She is a faculty member of the Juilliard School of Drama and received the Fox Fellowship for Distinguished Achievement.

**Tom Nelis** (*Under Construction*) has appeared with SITI Company in *Score*; *Freshwater*; *bobraushenbergamerica*; *A Midsummer Night's Dream*; *War of the Worlds—The Radio Play*; *Going, Going, Gone*; *The Medium*; and *Orestes*. He has appeared on Broadway in *The Caine Mutiny Court Martial* and *Aida* and off-Broadway in *Road Show* (Public Theater), *Doris to Darlene* (Playwrights Horizons), *Ipheginia 2.0* (Signature Theater), *The Merchant of Venice* (Theater for a New Audience), *The Seven* (New York Theater Workshop), Laurie Anderson's *Moby Dick* (Brooklyn Academy of Music),

and *Pearls for Pigs* by Richard Foreman. His many regional credits include *Great Falls* by Lee Blessing at the Humana Festival of New American Plays at the Actors Theatre of Louisville in 2008. He received an Obie Award for *The Medium*, the San Diego Circle Critics Ensemble Award for *Wintertime*, a Drama League nomination for *Score*, and a Barrymore nomination for *Candide*. He holds an MFA from the University of California, San Diego.

**Barney O'Hanlon** (*Under Construction* and *Who Do You Think You Are*) has been a SITI Company member and collaborator with Anne Bogart since 1986. His international credits include the Dublin Theatre Festival; the Edinburgh International Festival; the Prague Quadrennial; MC93 Bobigny, France; the Bonn Biennial; and Festival Iberoamericano, Bogota. His New York credits include BAM's Next Wave Festival, the Public Theater, the New York Theater Workshop, PS 122, the New York City Opera, and Glimmerglass Opera. His regional credits include the American Repertory Theater, Trinity Repertory, the Alley Theater, the Actors Theatre of Louisville, Steppenwolf, the Alabama Shakespeare Festival, the San Jose Repertory Theatre, Portland Stage, UCLA Performing Arts, the Walker Art Center, the Wexner Center for the Arts, Krannert Center, Rude Mechanicals, and numerous Humana Festivals. His other credits include the Los Angeles Opera, Opera Omaha, and the Prince Music Theater.

**Makela Spielman** (*Under Construction*) has regional theatre credits that include *Radio Macbeth* (SITI Company/Court Theatre), *Doubt* (Cincinnati Playhouse in the Park), *The Crowd You're in With* (Magic Theatre), *Living Out* (Denver Center Theatre Company), *Intimations for Saxophone* (directed



by Anne Bogart) and *The Miracle Worker* (both at Arena Stage), *The Burning Deck* (La Jolla Playhouse), *Antony and Cleopatra* and *Measure for Measure* (both at the Shakespeare Theatre), and *As You Like It* (Folger Shakespeare Theatre). Her New York theatre credits include *Silence* (Roundtable Ensemble), *Children of a Lesser God* (Keen Theatre Company), and *Spin Moves* (Summer Play Festival). She has also appeared at Theatreworks, the Studio Theatre, Theater J, the Kennedy Center, and the O'Neill Playwrights Conference for four seasons. Spielman holds an MFA from the University of California, San Diego.

**Samuel Stricklen** (*Under Construction*) has appeared regionally in *Six Degrees of Separation* (Old Globe), *Current Nobody* (La Jolla Playhouse), *Victor/Victoria*, *Phantom*, *Annie Get Your Gun* (Tulane Summer Lyric Theatre), and *Cincinnati Pops* with Martin Short. He has appeared off-Broadway in *Creation: A Clown Show*. He has been on national and international tours with the SITl Company productions of *bobrauschenbergamerica* and *Radio Macbeth*. His TV credits include *Six Degrees*, *As the World Turns*, and *M.O.N.Y.* He has also appeared in *I Ain't Yo Uncle*, *A Dream Play*, *La Dispute*, *Blues for an Alabama Sky*, *The Tempest*, and *Arms and the Man*. He was in the SITl Company workshop and received a BFA in acting from the University of Cincinnati and an MFA in acting from the University of California, San Diego.

**Stephen Duff Webber** (*Under Construction*) has spent 15 years touring nationally and internationally with SITl Company in *Radio Macbeth* (Macbeth); *Hotel Cassiopeia*; *Death and the Ploughman*; *War of the Worlds* (Orson Welles); *bobrauschenbergamerica*; *systems/layers* (with Rachel's); *La Dispute*; A

*Midsummer Night's Dream*; *Cabin Pressure*; *Going, Going, Gone*; *Culture of Desire*; *The Medium*; *Private Lives*; *Hay Fever*; *War of the Worlds—The Radio Play* (Orson Welles); and *Short Stories*. His regional theatre work includes performances with the American Repertory Theatre, Actors Theatre of Louisville, Milwaukee Repertory Theater, San Jose Repertory Theatre, Portland Stage Company, Alabama Shakespeare Festival, and Court Theatre. Off-Broadway, he has appeared in *Death and the Ploughman* (CSC), *War of the Worlds* (Brooklyn Academy of Music), *Culture of Desire* (New York Theatre Workshop), *Trojan Women 2.0* (En Garde Arts), and *Hotel Cassiopeia* (Brooklyn Academy of Music).

**Elizabeth Moreau** (Company Manager) has worked with SITl on the creation of *Under Construction*, *Freshwater*, *Who Do You Think You Are*, *Radio Macbeth*, *Hotel Cassiopeia*, *Intimations for Saxophone*, *A Midsummer Night's Dream*, *La Dispute*, *Hayfever*, *Death and the Ploughman*, *bobrauschenbergamerica*, *Score*, and *systems/layers* (with the band Rachel's), and she has toured these works as well as *Bob*, *Room*, *War of the Worlds*, *War of the Worlds—The Radio Play*, and *Cabin Pressure*. She has worked on *Gull* and *Shutter* with Lightbox; *Match-Play* with the Rude Mechanicals; *Dead Man's Cell Phone* with Anne Bogart; and *Apparition*, *To the Lighthouse*, and *Doris to Darlene* with Les Waters. Elizabeth is the artistic associate of the O'Neill Playwrights Conference.



---

**Dave Polato** (Production Stage Manager) is very excited to be working with SITI Company after being a fan and friend of the company for several years. He has spent the past two years working with The TEAM, touring *Particularly in the Heartland* as well as developing and touring *Architecting*. Other theatre credits include *Blasted* (Soho Repertory Theatre), *The Conscientious Objector* (Keen Company), *The Screwtape Letters* (Fellowship for the Performing Arts), *The Bacchae* (workshop at the Public Theater), *365 Plays/365 Days* (the Public Theater), *El Conquistador* (New York Theatre Workshop), and *Bone Portraits* (Stillpoint Productions). He also has made multiple appearances at the O'Neill Playwrights Conference and the Cabaret Festival. Polato trained at the University of Rochester International Theatre Program and at the McCarter Theatre Center.

**Dave Sleswick** (Production Assistant) is an actor, acrobatic physical performer, producer, and stage manager. After graduating from Queensland University of Technology with a Bachelor of Dramatic Arts degree, he went on to work as a performer and general manager of Zen Zen Zo Physical Theatre. During Dave's five years with Zen Zen Zo, he participated in the company's internship program and was involved with the following productions: *Sub-Con Warrior 2.0* (performer and acrobat), *Dracula* (producer), *Sub-Con Warrior 1* (performer, acrobat, and producer), *Those with Lucifer* (stage manager), *An End to Dreaming* (performer), and *Macbeth: As Told by the Weird Sisters* (performer), which was performed at the World Shakespeare Congress in 2006.

**Neil Patel** (Set Design, *Under Construction*) has been a SITI Company member on *Hotel Cassiopeia*, *War of the Worlds*, *The Adding Machine*, *Private Lives*, *Hayfever*, *A Midsummer Night's Dream*, *Room, Bob*, and *Score*. His work has appeared on Broadway in *[Title of Show]*, *Sideman* (West End and Kennedy Center), *'Night Mother*, and *Ring of Fire*. His work has appeared on the West End in *Underneath the Lintel*. His off-Broadway credits include *Fifty Words* (MCC), *Dinner with Friends* (Variety Arts Theater and national tour), *Peter and Jerry* (Second Stage), *Streamers* (Roundabout), and *Hotel Cassiopeia* (BAM Next Wave Festival). He has worked on operas for the New York City Opera, the Santa Fe Opera, the Minnesota Opera, the Opera Theatre of St. Louis, and the Tokyo Nikikai Opera Theater. His television and film credits include *In Treatment* (HBO) and *Alone* (Gregory Orr Productions). He has won the Helen Hayes Award, received numerous Drama Desk nominations, and received an Obie Award for Sustained Excellence in both 1996 and 2001. [www.neilpatel.design.com](http://www.neilpatel.design.com)

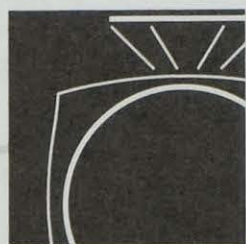
**Brian H. Scott** (Lighting Design, *Under Construction* and *Who Do You Think You Are*) has worked with SITI Company on *Freshwater*, *Who Do You Think You Are*, *Radio Macbeth*, *Hotel Cassiopeia*, *Death and the Ploughman*, *bobrauschenbergamerica* (2004 Henry Hewes Design Award), *systems/layers*, and *War of the Worlds—The Radio Play*. With Rude Mechanicals, he has worked on *The Method Gun*, *Lipstick Traces*, *Big Love*, *Cherrywood*, and *Matchplay*. With the Classic Stage Company, he has worked on *Hamlet*, *Richard II*, *Richard III*, and *The Tempest*. With Playwrights Horizons, he has worked



on *Dead Man's Cell Phone*, and with the New York Theatre Workshop, he has worked on *Songs from an Unmade Bed*.

**James Schuette** (Costume Design, *Under Construction*/Costume and Set Design, *Who Do You Think You Are*) is a member of SITI Company and has designed over 20 productions for the company. His recent projects include set designs for Tarell Alvin McCraney's *Wig Out* (Vineyard) and Paula Vogel's *Civil War Christmas* (Long Wharf), both directed by Tina Landau; set design for *Kafka on the Shore*, directed by Frank Galati (Steppenwolf); and costume design for *I Capuleti e i Montecchi*, directed by Anne Bogart (Glimmerglass Opera). His work has been seen at ART, the Actors Theatre of Louisville,

ACT, Arena Stage, the BAM Next Wave Festival, Berkeley Rep, the La Jolla Playhouse, the Mark Taper Forum, the Manhattan Theatre Club, the New York Theatre Workshop, the Oregon Shakespeare Festival, Playwrights Horizons, the Public Theater, Seattle Rep, Yale Rep, the Boston Lyric Opera, the Opera Theatre of St. Louis, the Houston Grand Opera, the Seattle Opera, the Minnesota Opera, the New York City Opera, the Santa Fe Opera, the Minnesota Opera, and internationally.



robert's  
the fine art of jewelry

28 chester street . champaign, il 61820  
217.352-8618

one-of-a-kind . limited production  
restoration . custom repair



PRECISION GRAPHICS

Celebrating 30 years  
of excellence

[www.precisiongraphics.com](http://www.precisiongraphics.com)  
217-359-6655

- Web Design
- Marketing
- Design
- Illustration
- PR
- Branding



**Darron L West** (Sound Design, *Under Construction* and *Who Do You Think You Are*) has been a SITI Company member since 1993 and first collaborated with Anne Bogart in 1990 while he was the resident sound designer at the Actors Theatre of Louisville. His designs have been heard in over 400 productions both nationally and internationally. His accolades include a 1998 Obie Award for SITI's *Bob*, a 2000 Princess Grace Award, an Entertainment Design Magazine EDDY, the Henry Hewes Design Award in 2004 and 2005, and the 2006 Lortell Award. His directing credits include *Kid Simple* (2004 Humana Festival of New American Plays at the Actors Theatre

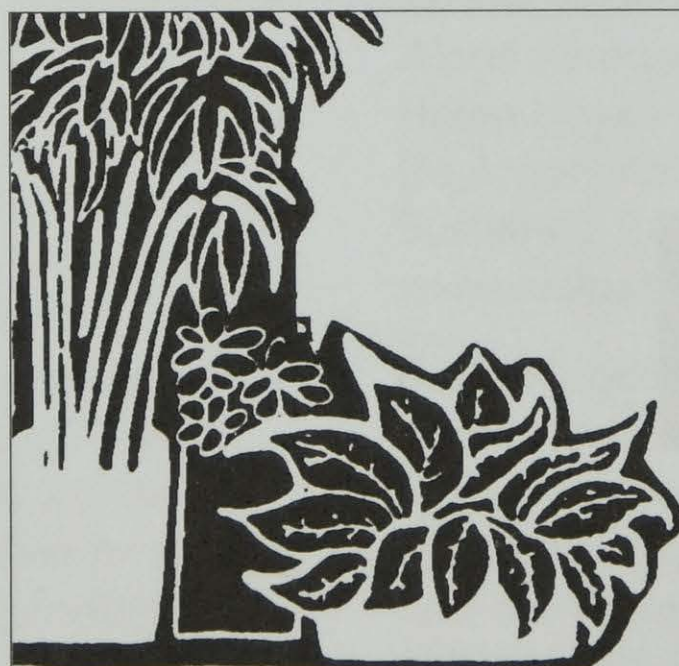
of Louisville), *Lilly's Purple Plastic Purse* (Children's Theater Company in Minneapolis), *Big Love* (Rude Mechanicals in Austin), *Eurydice* (Children's Theatre Company in Minneapolis), and SITI Company's *War of the Worlds—The Radio Play* and *Radio Macbeth*.

**Megan Wanlass Szalla** (SITI Company Executive Director) has been a member of SITI Company since 1995. Megan was the company stage manager for five years prior to becoming SITI's executive director. In her tenure with SITI, Megan has helped to create over 24 shows. She began working with Anne Bogart during *The Adding Machine* at the Actors

brilliant  
futures

THE CAMPAIGN FOR THE  
UNIVERSITY OF ILLINOIS  
CAMPUS GOAL: \$1.5 BILLION

Be a part of creating  
brilliant futures at  
[www.brilliantfutures.illinois.edu](http://www.brilliantfutures.illinois.edu).



*Interior Plantscaping*  
Consultants and Design  
Total Maintenance Provided

We are proud  
to provide  
plantscaping for  
Krannert Center for  
the Performing Arts.

**PLANTS,etc**  
**351-1723.**



Theatre of Louisville. She has an Arts Administration Certificate from New York University, attended the Executive Program for Non-Profit Leaders at Stanford University Business School, was a member of the Arts Leadership Institute Charter Class at Teachers College of Columbia University, and holds a BA in theatre from Occidental College in Los Angeles.

*Creative  
Contemporary Cuisine  
by Chef Raymond Timpone*



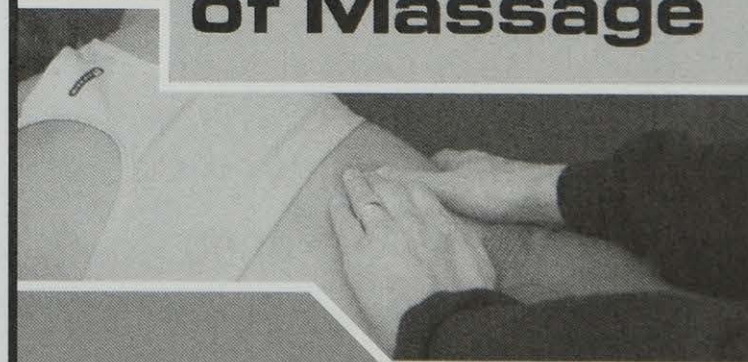
*Voted #1 fine dining in  
east central Illinois*  
★★★Mobil Travel Guide

## *Quite Simply the Best!*

Casual style dining, great for luncheons,  
dinners, after theatre, or for special occasions.

*located at  
710 South Goodwin, Urbana, 344-7619  
1/2 block south of Krannert Center*

## **The Art and Science of Massage**



**Windsor Road 351-1011**  
**Illini Union Oasis 239-1104**  
**A.R.C. 552-2961**  
**Fitness Center 355-8794**



**BodyWork**  
Associates

[www.bodyworkassociates.com](http://www.bodyworkassociates.com)

081308KR

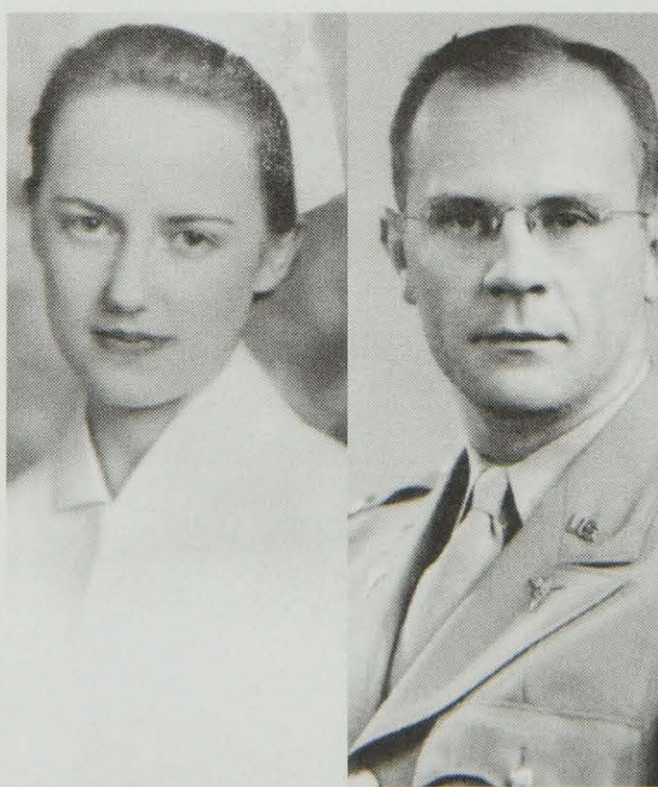


# KRANNERT CENTER SOCIETY

The Krannert Center Society recognizes gifts and pledges to Krannert Center of \$1 million or more. These donors understood how the arts ennoble the human spirit. The University of Illinois, College of Fine and Applied Arts, and Krannert Center are grateful for their vision.



VALENTINE JOBST III (1904-1993)  
AB 1926, AM 1931, PhD 1935  
March 1994



CLAIR MAE ARENDS (1912-2000)  
G. WILLIAM ARENDS (1914-1997)  
MD 1940  
March 2000

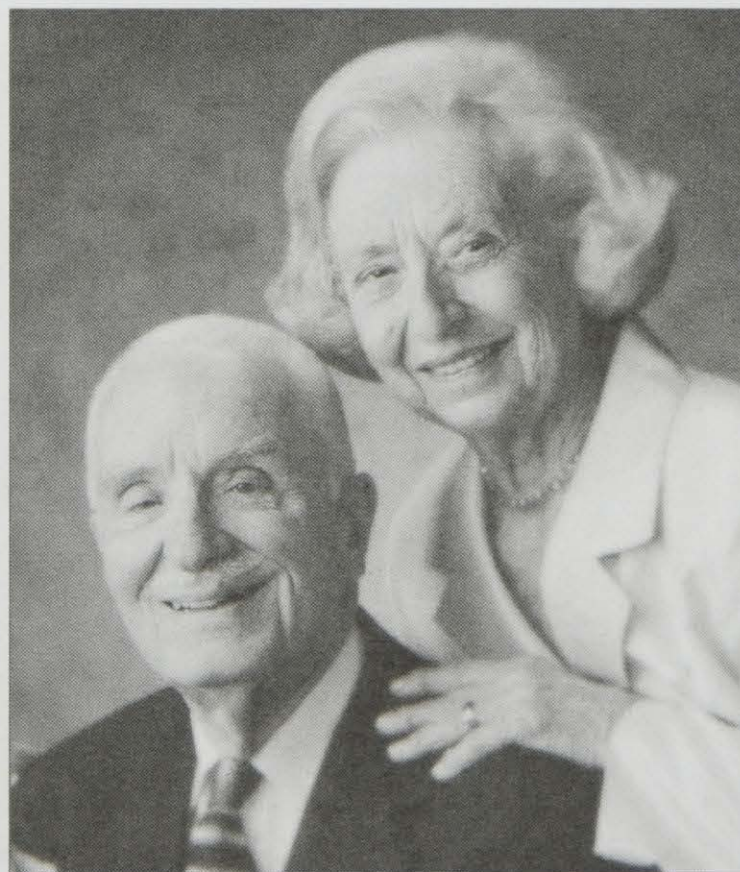


MARILYN PFLEDERER ZIMMERMAN  
(1929-1995)  
MS 1955, EdD 1963  
VERNON K. ZIMMERMAN  
(1928-1996)  
BS 1949, MS 1950, PhD 1964  
November 2003



# THE FOELLINGER SOCIETY

The Foellinger Society recognizes gifts and pledges to Krannert Center of \$500,000 to \$999,999. The Society is named to honor Helene Foellinger, whose gift in memory of her sister, Loretta Foellinger Teeple, helped establish the Marquee Performance Endowment.



AVIS HILFINGER (1915-2004)

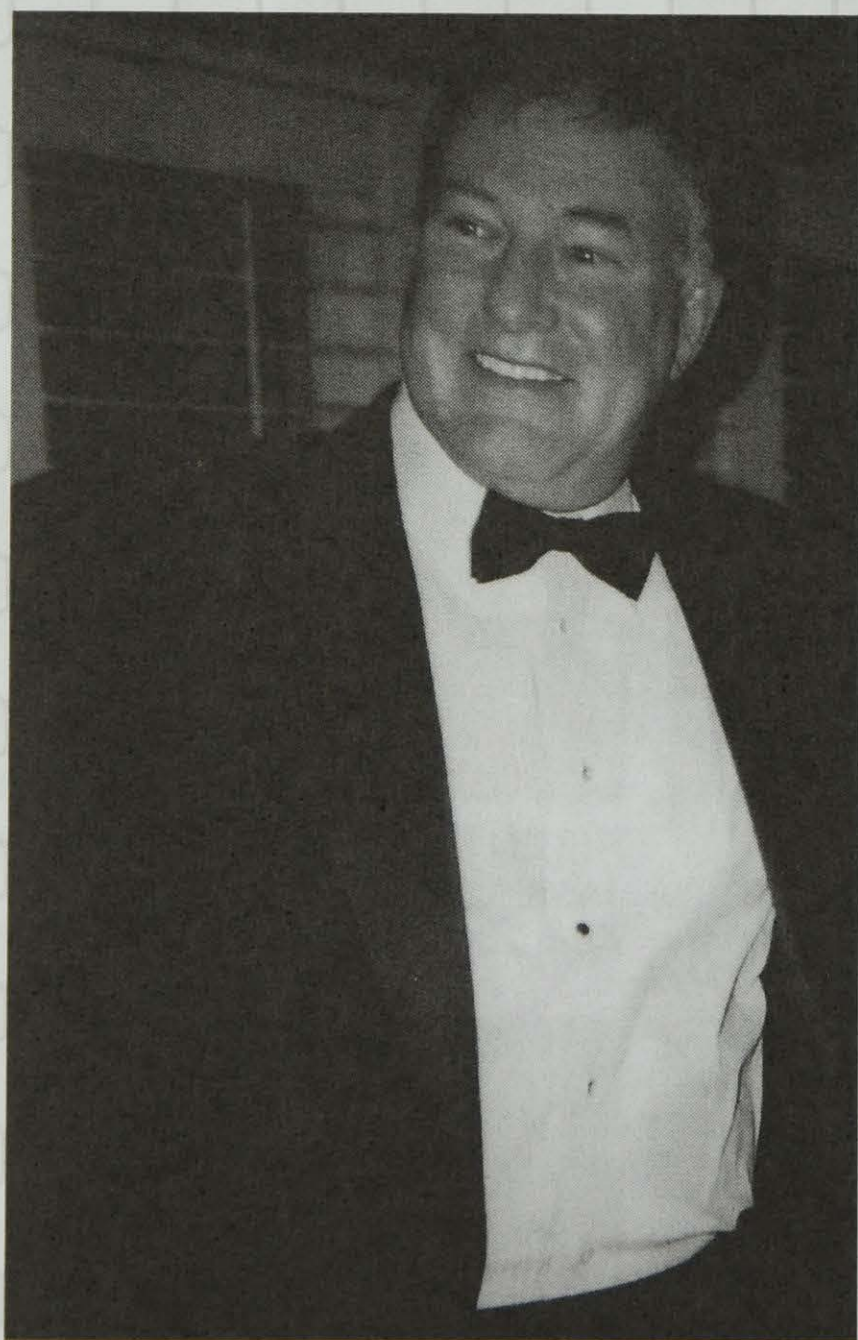
DEAN HILFINGER (1912-2006)

April 2000



# THE COLWELL SOCIETY

\$100,000 Immediate Gift | September 23, 2008



## MICHAEL CARRAGHER

(1946-2009)

With deep gratitude, Krannert Center acknowledges the late Michael J. Carragher as the newest member of the Colwell Society in recognition of his 2008 gift to perpetually fund a Marquee performance each season. We fondly remember Michael for his generous underwriting support over the years—a commitment to the Center's future that will touch the lives of thousands in the years ahead.



# THE COLWELL SOCIETY

The Colwell Society recognizes gifts and pledges to Krannert Center of \$100,000 to \$499,999. The Society honors three early benefactors: Dr. John B. Colwell, Pauline Groves Colwell, and R. Forrest Colwell. These gifts were instrumental in securing the Marquee Performance Endowment.



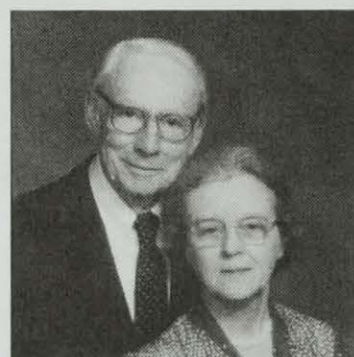
DOLORIS DWYER  
(1918-1997)  
April 1996



EMILY GILLESPIE  
(1909-2000)  
JAMES GILLESPIE  
(1905-1999)  
December 1996



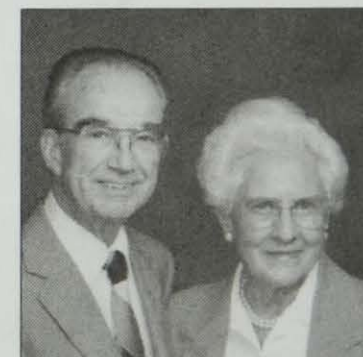
ROSANN &  
RICHARD NOEL  
April 1997



BETH L. &  
JAMES W. ARMSEY  
February 1998



MARY &  
KENNETH  
ANDERSEN  
April 1999



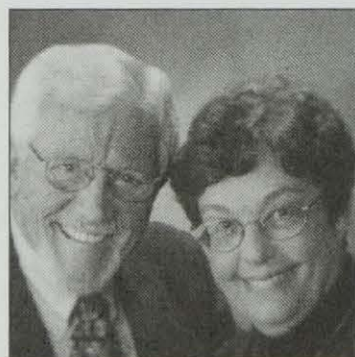
LOIS KENT  
(1912-1999)  
LOUIS KENT  
(1914-1994)  
October 2000



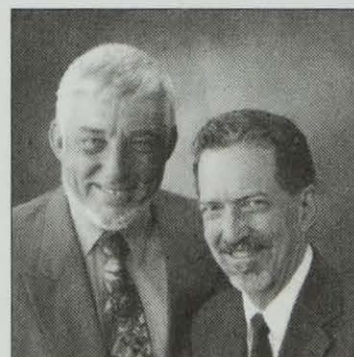
JUNE & GROVER  
SEITZINGER  
September 2001



JUDITH & STANLEY  
IKENBERRY  
September 2002



HELEN &  
DANIEL RICHARDS  
October 2003



DIRK MOL &  
JERALD WRAY  
September 2004



HELEN &  
JAMES FARMER  
April 2005



RICHARD MERRITT  
(1933-2005)  
ANNA MERRITT  
November 2006



ALICE &  
JOHN PFEFFER  
November 2006



ANONYMOUS  
November 2006



LINDA M. MILLS  
(1940-2006)  
October 2007



CAROLE & JERRY  
RINGER  
October 2007



JUDITH & JON  
LIEBMAN  
January 2008



## KRANNERT CENTER STAFF

---

### Senior Management

Mike Ross, Director  
Rebecca McBride, Senior Associate Director  
Jean E. Huddleston, Director of Business and Operations

### Director's Office

Janeane Keller, Assistant to the Director  
Tammey Kikta, Assistant Director for Artistic Services  
Lisa Lillig, Visiting Assistant Director for Client Relations  
Valerie Oliveira, Assistant to the Senior Associate Director/  
Resident Photographer  
Barbara Tassler, Receptionist/Secretary to the Senior Associate Director

### Marketing and Patron Services

Maureen V. Reagan, Assistant Director for Marketing and Patron Services  
Vanessa Burgett, Graphic Designer  
M. Joan Cushman, Marketing Services Coordinator  
Jenny Goelz, Engagement Programs Director  
Bridget Lee-Calfas, Public Information Director  
Jan McCracken, Senior Graphic Designer  
Anni Poppen, Graphic Designer  
Sam Smith, Engagement Director  
Becky Standard, Visiting Media/Communications Specialist  
Crystal Womble, Outreach Director

### Ticket Office

Michael Prorise, Ticket Services Director  
Jenny Carpenter, Assistant Ticket Services Director  
Bunny Berg, Whitney Havice, Megan Klimek, Allison Payne, Jon Proctor,  
Barbara Schoenoff, Ticket Office Supervisors

### The Promenade

Dale E. Turner, The Promenade Director  
Zia Moon, The Promenade Day Supervisor

### Food Services

Michael Steiskal, Food Services Director  
Kostas Galaras, Food Services Evening Supervisor  
Jolene Perry, Intermezzo Supervisor  
Chuck Hanson, Intermezzo Assistant  
Dean Brian Carlson, Catering Manager  
Heather Schmidt, Catering Assistant

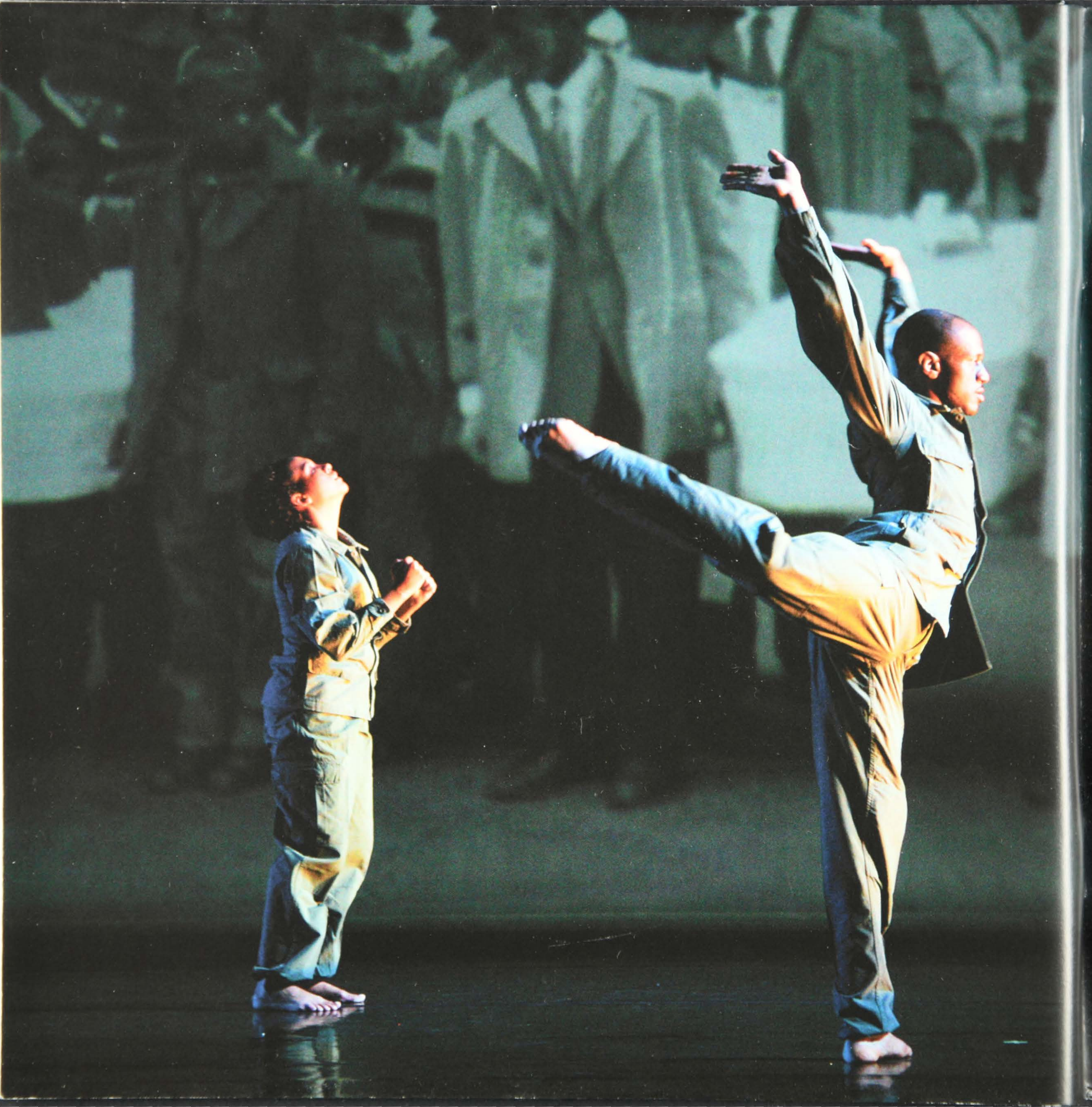
### Computer Information and Access Office

Gary R. Bernstein, Computer Information and Access Director  
Beth Shirk, Assistant Computer Information and Access Director  
Gina Tomes, Assistant Computer Information and Access Director



Business Office	Debbi Tasic, Jeannette Arbuckle, Lynn Bierman, Debbie Delaney, Robert D. Welch, Eva Marie White, Accounting Staff
Building Operations	R. M. Goss, Assistant Director for Building Operations John Hazelbaker, John O. Williams, Facility Managers Joe Butsch, Building Electrician Randy Greever, Assistant Chief Building Operations Engineer Robin Baker, Eric Carr, Joe Domain, Bryan Franzen, LaFayette Harvey, Rod Keagle, Barry Lerch, Kevin Logue, Tony Mapson, Gene Place, Diane Raymond, Attendants
Events	Nick Zazal, Assistant Director for Events Thomas E. Blake, Events Technical Director Daniel Pozzebon, Alicia Reece, Events Coordinators John H. Minor, Head Piano Technician
Production	Karen Quisenberry, Assistant Director for Production Terri Ciofalo, Assistant Production Manager Jon Schoenoff, Audio Director Travis Grimes, Assistant Audio Director Michael W. Williams, Lighting Director Lisa Kidd, Associate Lighting Director Binky Donley, Properties Director Julie Rundell, Assistant Properties Director Anne C. de Velder, Costume Director Nicole Faurant, Costume Rentals Director Rosemary Morefield, Assistant Costume Shop Director/Cutter/Draper James Edaburn, Cutter/Draper Nancy Coddington, Linda Follmer, Carol Pruett, Theatrical Stitchers René Chadwick, Hair and Makeup Director Thomas V. Korder, Technical Director Verda Beth Martell, Assistant Technical Director Kenneth M. Egan, Facility Supervisor Rich Hall, Kevin Hopkins, Stage Carpenters Jeanine Meyer, Assistant Scene Shop Supervisor
Development	Deborah S. Miller, Interim Director of Development Robin K. Fossum, Senior Director of Development for Krannert Center, Senior Regional Director for the University of Illinois Foundation Rebecca Franks, Development Assistant Mary Anne Lewis, Visiting Special Projects Coordinator Carleen McCormick, Development Office Coordinator







# CROSSROADS

## WELCOME TO THE

Imagine 300 of your new closest friends enjoying a free late-night concert, an entire theatre of eight-year-olds jumping to the beat of live music, or the intimacy of hearing a foremost classical musician chat about his childhood or read a bit of her own prose—these kinds of experiences are at the heart of the Center, and the connectivity that they create is the vital force behind our Creative Intersections events and partnerships.

Through the hundreds of free programs offered by our Creative Intersections initiative and numerous local partnerships, Krannert Center acts on its commitment to the cultural climate of the community that we all share. We hope you'll join us throughout the season for conversations, collaborations, and the exploration of new ways to come together.

[KrannertCenter.com/creative](http://KrannertCenter.com/creative)





being matters.