

Women's Project & SITI Company present

Virginia Woolf's
freshwater



directed by Anne Bogart

ENCORE
The Performing Arts Magazine

"Reprising some of
Mr. Dunn's major works . . .
It's a great idea"

— Claudia La Rocco in
the New York Times

Douglas Dunn & Dancers

in *Pulcinella*

for the 15th annual 92nd Street Y Harkness Dance Festival
Ailey Citigroup Theater
55th Street & 10th Avenue
February 25, 26, 28, March 1
Wednesday, Thursday, Saturday at 8 pm
Sunday at 2 pm

Douglas Dunn's choreography
of Stravinsky's *Pulcinella*,
for eight women and seven men.
Costumes by Mimi Gross
and lighting by Carol Mullins.

And a new work:
then boss in man?
featuring dancers
Kira Blazek, Douglas Dunn,
Liz Filbrun, Jean Freebury,
Paul Singh, and
Christopher Williams,
also playing live
classical guitarist Tali Roth.
Design by Charles Atlas.



Photo: Beatriz Schiller

Tickets at www.92Y.org/harknessfestival

92Y

ENCORE

The Performing Arts Magazine

JANUARY 2009 • NEW YORK • WWW.ENCOREMAG.COM

Publisher **Tom Holmes**

Editor **Tanya Richardson**

Contributing Editor **Lisa LeeKing**

Contributing Writers

**Debra Griboff, Melynda Fuller,
Williams R. Cole, Todd Simmons,
Laura Scott, Jalylah Burrell**

Art Director **John B. Fakorede**

Graphic Designers

Janice Olson, Thea Karas

Advertising Director

Carol Eicher

Account Executives

Melanie Deck, Mykal Knight

Project Manager

Leslie Chase

Bookkeeper

Nery Solorzano

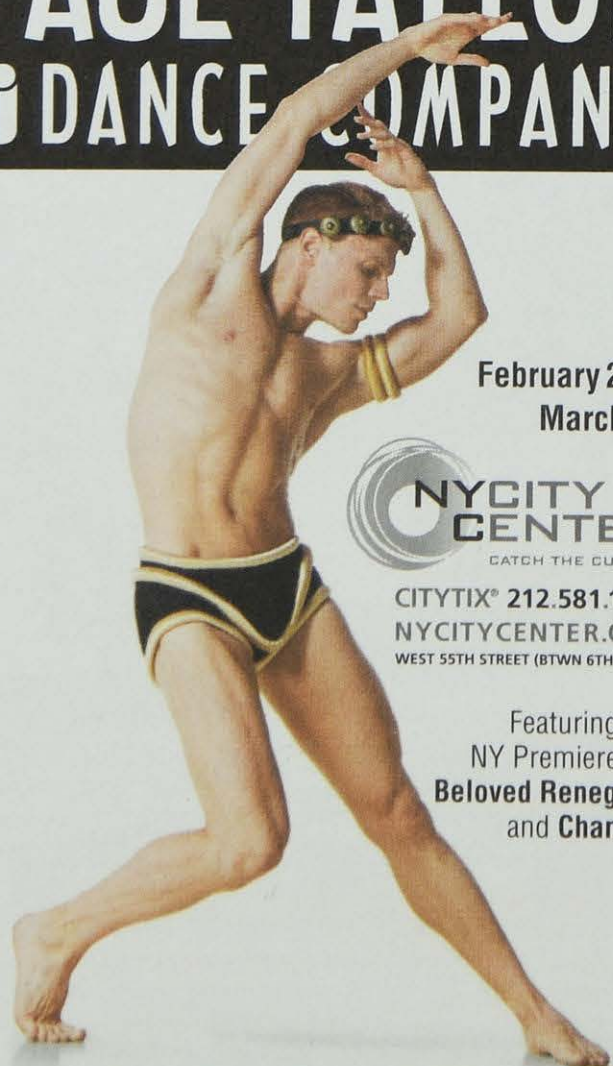
PAUL TAYLOR DANCE COMPANY

February 25 –
March 15



CITYTIX® 212.581.1212
NYCITYCENTER.ORG
WEST 55TH STREET (BTWN 6TH & 7TH)

Featuring the
NY Premieres of
Beloved Renegade
and **Changes**



Michael Trusnovec in Images, photo © Lois Greenfield

501 5th Ave., 3rd Flr.,
New York, NY 10017

212.956.2270

Advertising: 646.290.5903

Fax: 646.216.9025

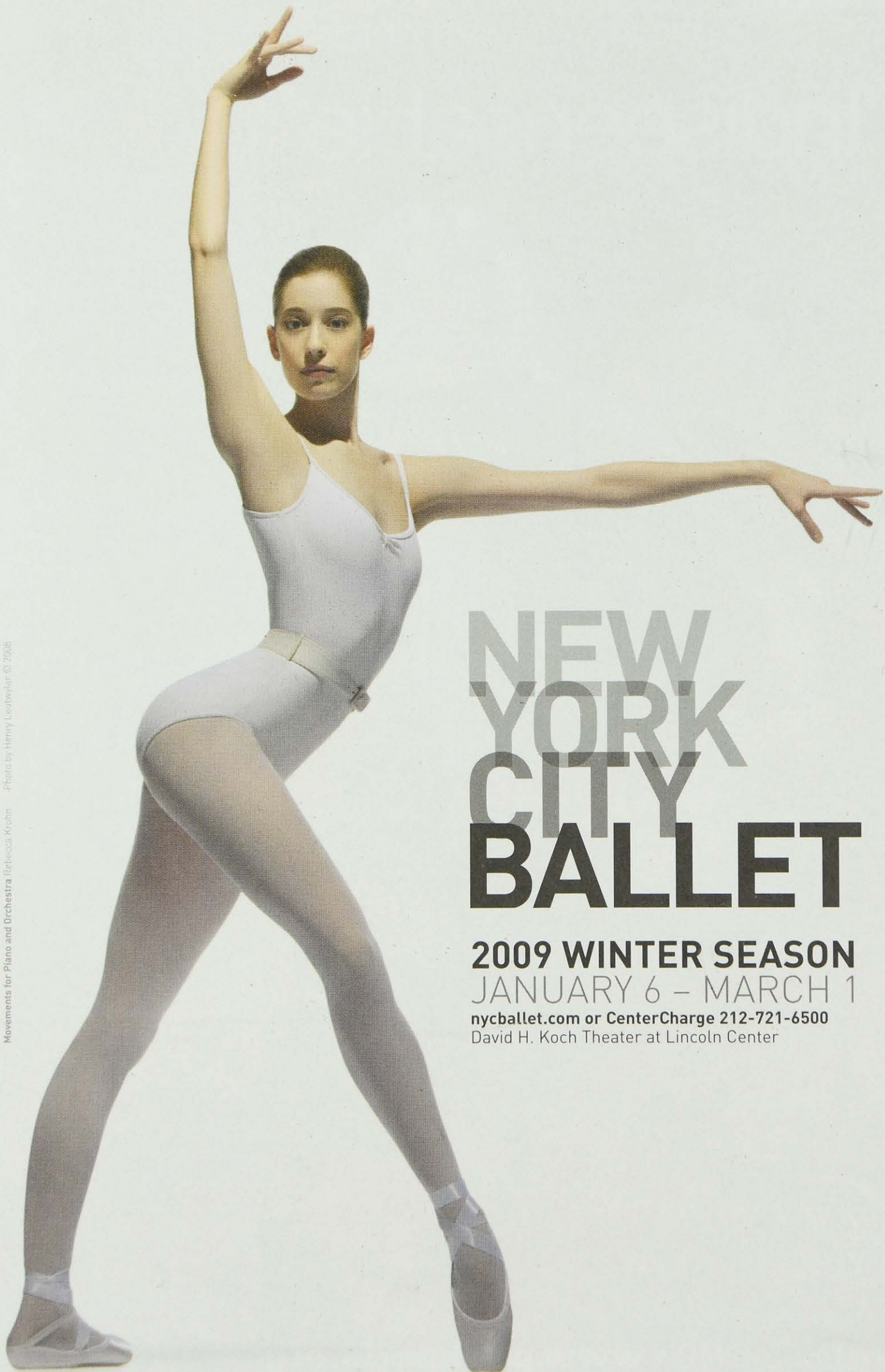
www.encoremag.com

© 2009 T.H. Publishing, Inc.

All rights reserved.

Reproduction without permission
is strictly prohibited.

Movements for Piano and Orchestra Rebecca Krubin Photo by Henry Leutwyler © 2008



NEW YORK CITY BALLET

2009 WINTER SEASON
JANUARY 6 – MARCH 1

nycballet.com or CenterCharge 212-721-6500
David H. Koch Theater at Lincoln Center

WOMEN'S PROJECT
under the direction of Julie Crosby

and

SITI COMPANY
under the direction of Anne Bogart
and Megan Wanlass Szalla

present

FRESHWATER

by **Virginia Woolf**
directed by **Anne Bogart**

with

Akiko Aizawa, Gian Murray Gianino, Ellen Lauren, Kelly Maurer,
Tom Nelis, Barney O'Hanlon and Stephen Duff Webber

Set & Costume Design
James Schuette

Lighting Design
Brian H Scott

Sound Design
Darron L West

Hair & Wig Design
Anne Ford-Coates

Production Manager
Aduro Productions

Dramaturgy
Megan E. Carter

Production Stage Manager
Elizabeth Moreau

Stage Manager
Jack Gianino

Assistant Director
James Dacre

The Producers gratefully acknowledge the Little Family Foundation, Shubert Foundation, Fan Fox and Leslie R. Samuels Foundation, Andrew W. Mellon Foundation New York Theater Program administered by the New York Foundation for the Arts, Department of Cultural Affairs in the City of New York, New York State Council on the Arts, Time Warner Inc., and Lila Acheson Wallace Theater Fund/New York Community Trust, whose generous contributions have made this production possible.

January 15–February 15, 2009

Opening January 25, 2009, the joyous 127th anniversary of Virginia Woolf's birth

WP's Julia Miles Theater

FRESHWATER

by VIRGINIA WOOLF

directed by ANNE BOGART

CAST (in order of appearance)

Mary Magdalen.	Akiko Aizawa
Lt. John Craig	Gian Murray Gianino
Julia Margaret Cameron	Ellen Lauren
Charles Hay Cameron	Tom Nelis
George Frederick Watts.	Barney O’Hanlon
Alfred Lord Tennyson	Stephen Duff Webber
Ellen Terry.	Kelly Maurer

... and perhaps a marmoset, a porpoise, and Her Majesty, Queen Victoria

Virginia Woolf wrote *Freshwater* in 1923, amid a major royal wedding, the discovery of insulin, a massive earthquake, financial exuberance, and considerable unrest in Germany. She put the script in her drawer, and returned to it again in 1935, during a major royal anniversary, the development of the radar, devastating dust storms, economic upheaval, and considerable unrest all over the globe. It was performed as a much-needed, “unbuttoned, laughing evening” for her friends and family. We have lovingly combined the two scripts in the hope of bringing you similar delight during these uneasy times.

PRODUCTION TEAM

Set and Costume Design	James Schuette
Lighting Design.	Brian H Scott
Sound Design	Darron L West
Hair & Wig Design.	Anne Ford-Coates
Dramaturgy	Megan E. Carter
Assistant Director	James Dacre
Production Management.	Aduro Productions, Jason Janicki
Production Stage Manager	Elizabeth Moreau
Stage Manager	Jack Gianino
Associate Sound Design	Matt Hubbs
Assistant Costume Design	Melissa Trn
Props Artisan	Stephanie Tucci
Assistant Sound Design & Sound Engineer	Asa Wember

DIRECTOR'S NOTE

Virginia Woolf wrote *Freshwater, A Comedy* as a light entertainment for her family to perform for friends at home. She cast her husband, sister, brother-in-law, and even a young niece as characters in the play. The subject she chose to write about in *Freshwater* also involved a group of family and friends, but one generation removed. During the late Victorian era, Julia Margaret Cameron, the photographer and a relative of Woolf's, lived in a house named Dimbola in an area on the Isle of Wight called *Freshwater*. There she entertained a coterie of famous friends. Woolf wrote the role of Julia Margaret Cameron for her sister Vanessa Bell to perform. Her husband Leonard Woolf played Cameron's husband the philosopher Charles Henry Hay Cameron. The deliriously famous poet Alfred Lord Tennyson, lived next door to the Camerons in a house called Farringford. Woolf cast her brother Adrian Bell to play Tennyson. As the famous painter George Fredrick Watts, Woolf cast Bloomsbury artist Duncan Grant who was also Woolf's own brother-in-law. The elderly Watts was married to a very young girl named Ellen Terry who later went on to become one of the greatest actresses of her generation. Woolf cast her niece Angelica Bell as the young Ellen Terry. The familial intermingling goes on.

What is particularly remarkable about the play and the circumstances of the first and only performance in 1935, is to imagine one group of artists, the Bloomsburys, performing a satire about another group of artists closely related to them but from the previous generation. Woolf, as an expression of a shared Bloomsbury opinion, was definitely lampooning and criticizing the Victorians for their odd obsessed ways, but we can also feel a love and an awe of one tribe for another.

WHO'S WHO

Virginia Woolf (Playwright) is thrilled that her one and only play is finally having its off-Broadway debut. Novels: *The Voyage Out* (1915); *Night and Day* (1919); *Jacob's Room* (1922); *Mrs. Dalloway* (1925); *To the Lighthouse* (1927); *Orlando: A Biography* (1928); *The Waves* (1931); *The Years* (1937); *Between the Acts* (1941). Short story collections: *Monday or Tuesday* (1921); *A Haunted House and Other Short Stories* (1943). Selected Non-fiction: *Modern Fiction* (1919); *A Room of One's Own* (1929); *On Being Ill* (1930); *The London Scene* (1931). Plays: *Freshwater* (1923, rev. 1935). Other: Participated in Dreadnought hoax dressed as a male Abyssinian royal. Founding member of the Bloomsbury Group. Studied at King's College London. Special thanks to Leonard and Mitzi.

Anne Bogart (Director) is the Artistic Director of the SIT Company, which she founded with Japanese director Tadashi Suzuki in 1992. She is a Professor at Columbia University where she runs the Graduate Directing Program. She is the author of three books: *A Director Prepares*, *The Viewpoints Book* and *And Then, You Act*.

Julie Crosby (WP Producing Artistic Director) joined Women's Project in 2005. Previously, she worked for over two decades on Broadway, off-Broadway, and international touring productions with many inspiring artists, including Anne Bogart, Laurie Anderson, Eve Ensler, Ruth Brown, Linda Hopkins, Martha Plimpton, Leslie

Uggams, Lea DeLaria, and Betty Buckley, among the many. A published author and university lecturer, Julie received her Ph.D. in medieval drama from Columbia University.

Megan Wanlass Szalla (SITI Company Executive Director) has been a member of the SITI Company since 1995. She was company Stage Manager for five years prior to becoming SITI's Executive Director. With SITI, she has helped to create over 24 shows. She began working with Anne Bogart during *The Adding Machine* at Actors Theatre of Louisville. She has an Arts Administration Certificate from New York University; attended the Executive Program for Non-Profit Leaders at Stanford University Business School; was a member of the Arts Leadership Institute Charter Class at Teachers College, Columbia University; and holds a B.A. in Theater from Occidental College in Los Angeles.

CAST (in alphabetical order)

Akiko Aizawa with SITI Company: *Who Do You Think You Are*, *Radio Macbeth*, *Hotel Cassiopeia*, *bobrauschenbergamerica*, *A Midsummer Night's Dream*, *Intimations for Saxophone*, *La Dispute*, *War of the Worlds – The Radio Play*, *Culture of Desire*, *Nicholas and Alexandra*, *Marina A Captive Spirit* and *systems/layers*. Theatres/Festivals include: American Repertory Theatre, Arena Stage, Court Theatre, Los Angeles Opera, New York Theatre Workshop, Walker Art Center, Wexner Center for the Arts, BAM's Next Wave Festival, Biennale Bonn, Dublin Theatre Festival, Edinburgh International Festival, Humana Festival, Melbourne Spoleto Festival, Toga Festival, and Under the Radar Festival.

Gian Murray Gianino is the third generation of a NY acting family. New York: *Aliens* (Women's Project), *Stitching* (Wild Project), *Paradise Park* (Signature), *Eurydice* (Second Stage), *Radio Macbeth* (The Public), *Bone Portraits* (SoHo Rep), *Psyche* (Ohio Theatre), *bobrauschenbergamerica* (BAM), *Crave* (TheatronInc/XOProjects), *transfigures* (Stillpoint) and Al Pacino's *Salome* readings (NY & LA). Regional: BTF, Yale Rep, Arena Stage, ATL, Provincetown Rep. and with Anne Bogart's SITI Company, Humana Festival, The Court, Stamford Performing Arts, Athenaeum, Krannert, Walker, Wexner, Bobigny, Bonn Biennale, Dublin Theatre Festival. Film/Television: *Painting Abby Long*, *Dead Canaries*, *Tale of Two Corners*, *Hospitality*, *Up to the Roof*, *Law and Order: SVU*, *All My Children*. B.A.: Wesleyan University.

Ellen Lauren is Associate Artistic Director for SITI Company member since 1991. New York credits include: NY City Opera, CSC, NY Theater Workshop, BAM Next Wave Festival. Additional festivals include: Dublin, Bonn, Bogotá, Bobigny, Melbourne, Edinburgh, Singapore. Also Wexner, Walker Art and, Krannert Centers. Regional: ART Cambridge, Actors Theatre Louisville, San Jose Rep, Stage West, The Milwaukee Rep, The Alley Theatre. Ongoing member Suzuki Company of Toga, Japan. Venues include: Moscow Art Theatre, Taganka Theatre, RSC London, Theatre Olympics Athens, Istanbul Festival, Festival Mundial Chile, Sao Paulo Brazil, Teatro Olimpico Italy, Montpelier France, Hong Kong Festival. Faculty member, Juilliard School of Drama. Fox Fellowship for Distinguished Achievement.

Kelly Maurer has been a member of the SITI Company since its inception. With the company she has performed in such shows as *Radio Macbeth*, *A Midsummer Night's Dream*, *La Dispute*, *bobrauschenbergamerica*, and *The Medium*. Last winter she performed the role of Hermia in Sara Ruhl's *Dead Man's Cell Phone* at Playwrights Horizons. Regionally, Kelly has been seen as Rainbow in Maria Irene Fornes' *And What of the Night* (Milwaukee Repertory Theater) and Christine in *Miss Julie* (Actors Theater of Louisville). Internationally, she has toured with Tadashi Suzuki in *Dionysus*, and with director Robert Wilson in *Persephone*. On Broadway, she performed the role of Jolly (as stand-by for Patti LuPone) in David Mamet's *The Old Neighborhood*. Kelly also performed in *An Adult Evening of Shel Silverstein* and *The Water Engine* at The Atlantic Theater.

Tom Nelis with SITI Company: *Score*; *bobrauschenbergamerica*; *A Midsummer Night's Dream*; *War of the Worlds – The Radio Play*; *Going, Going, Gone*; *The Medium*; *Orestes*. Broadway: *The Caine Mutiny Court Martial*, *Aida*. Off Broadway: *ROAD SHOW* (The Public); *Doris to Darlene* (Playwrights Horizons); *Ipheginia 2.0* (Signature Theater); *The Merchant of Venice* (Theater for a New Audience), *The Seven* (New York Theater Workshop), Laurie Anderson's *Moby Dick* (BAM), *Pearls for Pigs* (Richard Foreman), many regional credits including *Great Falls* by Lee Blessing (Humana Festival 08) Awards; OBIE (*The Medium*), San Diego Circle Critics Ensemble Award (*Wintertime*), Drama League Nomination (*Score*), Barrymore Nomination (*Candide*). MFA, UC San Diego.

Barney O'Hanlon is a SITI Company member and collaborator with Anne Bogart since 1986. International: Dublin Theatre Festival, Edinburgh International Festival, Prague Quadrennial, MC93 Bobigny, France, Bonn Biennial, Festival Iberoamericano, Bogota. New York: BAM's Next Wave Festival, Public Theater, New York Theater Workshop, PS 122, New York City Opera, Glimmerglass Opera. Regional: American Repertory Theater, Trinity Rep., Alley Theater, Actors Theatre of Louisville, Steppenwolf, Alabama Shakespeare Festival, San Jose Rep, Portland Stage, UCLA Performing Arts, Walker and Wexner Arts Centers, the Krannert Art Center, Rude Mechs and numerous Humana Festivals. Other: Los Angeles Opera, Opera Omaha, Prince Music Theater.

Stephen Duff Webber has spent 15 years touring nationally and internationally with SITI Company in *Radio Macbeth* (Macbeth), *Hotel Cassiopeia*, *Death and the Ploughman*, *War of the Worlds* (Orson Welles), *bobrauschenbergamerica*, *systems/layers* (with Rachel's), *La Dispute*, *A Midsummer Night's Dream*, *Cabin Pressure*, *Going Going Gone*, *Culture of Desire*, *The Medium*, *Private Lives*, *Hay Fever*, *War of the Worlds – The Radio Play* (Orson Welles), *Short Stories*. Regional Theater: American Repertory Theatre, Actors Theatre of Louisville, Milwaukee Repertory Theater, San Jose Repertory Theatre, Portland Stage Company, Alabama Shakespeare Festival, Court Theatre. Off Broadway: *Death and the Ploughman* (CSC), *War of the Worlds* (BAM), *Culture of Desire* (NYTW), *Trojan Women 2.0* (En Garde Arts), *Hotel Cassiopeia* (BAM).

PRODUCTION TEAM (in alphabetical order)

Aduro Productions (Production Management) is Carolyn Kelson and Jason Janicki. Off-Broadway credits include: *Fela!*, *Flamingo Court*, *Crooked*, *Sand*, *Aliens With Extraordinary Skills*, *Tall Grass*, *Fugue*, *Slava's Snowshow*, *The Fantasticks*, *My Name is Rachel Corrie*, *Striking 12*, *The Spanish Play*, *Sealed For Freshness*, *Mayumana*. International: *SpongeBob Square Pants Live*, Broadway Asia.

Megan E. Carter (Dramaturg) recent credits include *Aliens with Extraordinary Skills*, *Sand*, *transfigures*, *Corporate Carnival*, and *Girls Just Wanna Have Fund\$* (WP); Mac Wellman's *Harm's Way*, *aTack* and the *AmerikAn trip, tik* (newFangled theatReR); *Burial at Thebes* and *Sincerity Forever* (New Workshop Theatre). Megan is the Associate Artistic Director at Women's Project. She received her MFA in Dramaturgy from Brooklyn College.

Anne Ford-Coates (Wig & Hair Design) recent work includes *Lucrezia Borgia* for Washington National Opera, *The Crucible* for the Mezzo Television Opera Competition and Festival in Hungary, *Kiss Me*, *Kate*, *Guilio Cesare in Egitto*, *Das Liebesverbot*, and *I Capuletti e i Montecchi* for Glimmerglass Opera, *Twelfth Night* for The Shakespeare Theater Company, *Der Fliegende Holländer* for Utah Opera, *Semele* and *Ernani* for Opera Boston, *Aida* and *Pirates of Penzance* for Opera Omaha, *House of Blue Leaves* for the Mark Taper Forum, *Don Pasquale* for Syracuse Opera, *La Boheme* for Opera Tampa, and *Later the Same Evening*, *Street Scene* and *Griffelkin* for Manhattan School of Music. Ms. Ford-Coates is Associate Director of Elsen Associates, Inc. Resident Wig & Make-up Designer for Washington National Opera and numerous North American opera companies.

Jack Gianino (Stage Manager) up, down, all around...Broadway: two dozen, including *Souvenir*; *The Scarlet Pimpernel*; *Dream*; *Hughie*; *Inherit The Wind*; *Black and Blue*; *Carrie*; *The Tap Dance Kid*; *'night*, *Mother*; *Lena Horne*; *Brigadoon*; *The King and I*; and *A Christmas Carol* (MSG). Off Broadway: *Souvenir*; *Address Unknown*; *Rounding Third*; *Love, Janis*; *Tallulah Hallelujah! Tours: The Sound of Music* (Marie Osmond); *Hello, Dolly!* (Paris); *Porgy and Bess* (Japan); *On Your Toes* (Makarova). Regional: Mark Taper Forum, Long Wharf. Thanks to Julie Crosby, the WP staff, Elizabeth, and Norman.

Elizabeth Moreau (Production Stage Manager) with SITI Company, Elizabeth has worked on the creation of *Who Do You Think You Are*, *Radio Macbeth*, *Hotel Cassiopeia*, *Intimations for Saxophone*, *A Midsummer Night's Dream*, *La Dispute*, *Hayfever*, *Death and the Ploughman*, *bobrauschenbergamerica*, *Score*, and *systems/layers* (with the band Rachel's), and has toured these as well as *Bob*, *Room*, *War of the Worlds*, *War of the Worlds - The Radio Play*, and *Cabin Pressure*. She has worked on *Gull* and *Shutter* with Lightbox, *Match-Play* with the Rude Mechs, *Dead Man's Cell Phone* with Ms. Bogart, *Apparition*, *To The Lighthouse*, and *Doris to Darlene* with Les Waters. Elizabeth is the Artistic Associate of the O'Neill Playwrights Conference.

Brian Scott (Lighting Design) with SITI Company: *Who Do You Think You Are*, *Radio Macbeth*, *Hotel Cassiopeia*, *Death and the Ploughman*, *bobrauschenbergamerica* (2004

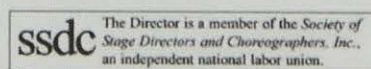
Henry Hewes Design Award), *systems/layers*, *War of the Worlds – The Radio Play*. With Rude Mechanicals: *The Method Gun*, *Lipstick Traces*, *Big Love*, *Cherrywood*, *Matchplay*. Classic Stage Company: *Hamlet*, *Richard II*, *Richard III*, *The Tempest*. With Playwrights Horizons: *Dead Man's Cell Phone*. With NYTW: *Songs From an Unmade Bed*.

James Schuette (Set and Costume Design) is a member of the SITI Company and has designed over 20 productions for the company. Recent projects include set designs for Tarell Alvin McCraney's *Wig Out* (Vineyard) and Paula Vogel's *Civil War Christmas* (Long Wharf) both directed by Tina Landau, *Kafka on the Shore* directed by Frank Galati (Steppenwolf) and costume design for *I Capuleti e i Montecchi* directed by Anne Bogart (Glimmerglass Opera). His work has been seen at ART, Actors Theatre of Louisville, ACT, Arena Stage, BAM Next Wave Festival, Berkeley Rep, La Jolla Playhouse, Mark Taper Forum, Manhattan Theatre Club, New York Theatre Workshop, Oregon Shakespeare Festival, Playwrights Horizons, The Public Theater, Seattle Rep, Yale Rep, Boston Lyric Opera, Opera Theatre of St. Louis, Houston Grand Opera, Seattle Opera, Minnesota Opera, New York City Opera, Santa Fe Opera, Minnesota Opera and internationally.

Darron L West (Sound Design) a SITI Company member since 1993 and first collaborated with Anne Bogart in 1990 while resident sound designer at Actors Theatre of Louisville. His designs have been heard in over 400 productions both nationally and internationally. His accolades include a 1998 Obie award for SITI's *Bob*, A 2000 Princes Grace Award, An Entertainment Design Magazine *EDDY* the 2004 and 2005 Henry Hewes Design award and the 2006 Lortell Award. Directing credits include *Kid Simple* (2004 Humana Festival of New Plays at Actors Theater of Louisville), *Lilly's Purple Plastic Purse* (Children's Theater Company Minneapolis), *Big Love* (Rude Mechanicals Austin, Texas), *Eurydice* (Children's Theatre Company) and SITI Company's *War of the Worlds – The Radio Play* and *Radio Macbeth*.

SPECIAL THANKS

Bruce Cohen; Jeremy Crow and The Society of Authors; Arlene Scanlan and David Squires from Aventine Hill; Monet Hurst-Mendoza, Dara Malina and Becca Poccia for dramaturgical research; the TDF Costume Collection; and Jackie Farrell & Long Wharf for providing the Victrola and camera. Swimsuit & Paint Smock Construction by Jennifer Dasher; Hoop Skirt and Jacket Construction by Carmel Dundon; Curtain Construction by Lorna Wanlass.



The Actors and Stage Managers in this production are members of Actors' Equity Association, The Union of Professional Actors and Stage Managers in the United States.

The Designers are members of the United Scenic Artists Union (USA).

Anne Bogart is a member of the Society of Stage Directors and Choreographers, Inc., an independent national labor union.

Theater Womens Project

Women's Project produces and promotes theater created by women, providing a stage for women's perspectives on a wide variety of political, social, religious, and cultural topics. Women's Project was founded in 1978 by Julia Miles to address the

conspicuous under-representation of women artists in the American theater; even today, fewer than 20% of production opportunities are provided to women playwrights and directors nationwide. Now entering its fourth decade, Women's Project has staged over 600 mainstage productions and developmental projects, and published ten anthologies of plays by women. Countless artists have achieved significant recognition through Women's Project, including Anne Bogart, Eve Ensler, Lynn Nottage, Maria Irene Fornes, Suzan-Lori Parks, Naomi Wallace, and Anna Deavere Smith, among the many. Women's Project mentors talented artists through its free, intensive Directors, Playwrights, and Producers Labs, and reaches over 2,000 students annually through *Ten Centuries of Women Playwrights*, an arts education program. In 1998, Women's Project purchased a historic off-Broadway venue—christened the Julia Miles Theater in 2004—on Manhattan's West 55th Street, making Women's Project the first and only women's theater company to hold the keys to its own stage.

www.WomensProject.org

WP BOARD OF DIRECTORS

Jann Leeming, <i>Chair</i>	Malcolm Duncan	Arlene Scanlan
Carol Ostrow, <i>Vice Chair</i>	Lucia Hwong Gordon	Donna Anne Soloway
Craig S. Thompson, <i>Treasurer</i>	Annette Green,	Kenneth I. Starr
Leigh A. Giroux, <i>Secretary</i>	<i>Chair Emeritus</i>	Tina Chen, <i>Chair Emeritus</i>
Lynne Bolton	Martha H. Jones	Pat Schoenfeld,
Lisa A. Del Duke	Julia Miles, <i>Founder</i>	<i>Chair Emeritus</i>

ARTISTIC & ADMINISTRATIVE PERSONNEL

Producing Artistic Director	Julie Crosby
Associate Artistic Director	Megan E. Carter
Associate Producer	Allison Prouty
Director of Marketing	Deane Brosnan
General Manager	Karron Karr
Press Agent	Bruce Cohen
Administration Assistant	Valentine Lysikatos
Interns	Carly Filbin, Dara Malina, Becca Poccia
Legal Counsel	Leigh A. Giroux, Dumler & Giroux
Financial Services	Patricia Taylor
Graphic Designer	Christy Briggs
Website Design & Services	Kurt Johns, Artztekk LLC

JULIA MILES THEATER

Theater Manager	Seth Morgan
Box Office Associates	Emily Havlik, Amy Morrison
House Managers	Kyle Huebbe, Monet Hurst-Mendoza
Housekeeping Services	Martha Espinosa

ARTS EDUCATION *TEN CENTURIES OF WOMEN PLAYWRIGHTS*

Education Director

Johnmichael Rossi

Teaching Artists

Ellen Boyce, Carla Briscoe, Claudia Casais, Grace Chapman, Esra Cizmeci, Shannon Davies, Carrie Ellman-Larsen, Rachel Evans, Alicia Frank, Nedra Gallegos, Tina Jones, Laura Konsin, Amir Levi, Kalle Macrides, Taryn Matusik, Megan Messmer, Mary Murphy, Ingrid Nordstrom, Erin Ronder, Lauren Rosen, David Sanchez, Adina Taubman, Allison Threadgold, Heather Venitucci, Shey Lyn Zanotti

WP ADVISORY BOARD

Billie Allen

Denise Ganjou

Nell Merlino

Michele Ammon

Julie Hughes

Donna Murphy

Kim James Bey

Morgan Jenness

Caymichael Patten

Sallie Bingham

Susan Jonas

Carey Perloff

Beth Bickers

Diane Krausz, Esq.

Louis Scheeder

Kathleen Chalfant

Harriet Newman Leve

Diane Stefani

Bruce Cohen

Stephanie Madoff

Paula Vogel

Liz Diamond

Emily Mann

Kat Williams

Susan Elrod

Lucy Martin

George C. Wolfe

Shirley Fishman

Mary McDonnell

WP LEADERSHIP COUNCIL

Kirsten Berkman

Cassandra Del Viscio

Roseanne Medina

Krystal Bowden

Jade Guanchez

Lisa Pittelman

Lisa Cusano

Lanna Joffrey

Tamilla Woodard

WP LAB

Where talent meets opportunity. The WP Labs are a free, two-year mentorship program for emerging and mid-career Playwrights, Directors, and Producers. Members collaborate with guest artists, WP staff, industry professionals, and other Lab participants to advance specific theatrical projects and get new work on stage. The current Lab members are in residency at WP from September 2008-May 2010.

Playwrights Lab

Bekah Brunstetter

Carla Ching

Alexis Clements

Nadia Davids

Laura Eason

Christine Evans

Charity Henson-Ballard

Kara Manning

Lynn Rosen

Crystal Skillman

Andrea Thome

Directors Lab

Gisela Cardenas

Heidi Carlsen

Rachel Chavkin

Lindsay Firman

Susanna Gellert

Dyana Kimball

Wendy McClellan

Alice Reagan

Gaye Taylor Upchurch

Donya Washington

Producers Lab

Diane Alianiello

Amanda Berkowitz

Heather Cohn

Jennifer Conley Darling

Aimee Davis

Sara Katz

Jake Lipman

Marissa RosenBlum

Allegra Schorr

Catherine Taylor-Williams

WP LIFETIME MEMBERS

Anonymous, Sallie Bingham, Tina Chen, Bruce Cohen, Julie Crosby, Malcolm Duncan, Lucia Hwong Gordon, Annette Green, Hilda Kraker, Catherine Leeming, Debi Leeming, Jann Leeming, Susan Leeming, Arthur D. Little, Kathryn Mayer, Estelle Parsons, Karen Roth, Nicole Seidel and Linda Toledo

WP ESTABLISHED MEMBERS

Alaine Aldaffer, Billie Allen, Judith Anderson, Milly Barranger, Neena Beeber, Beth Bickers, Anne Bogart, Lynne Bolton, Elizabeth Bradley, Deborah Brevoort, Robert A. Buckley, Ann Butera, Nancy Ford Charles, Marya Cohn, Constance Congdon, Catherine Coray, Lisa Cusano, Lisa D'Amour, Blythe Danner, Jennifer Conley Darling, Cassandra Del Viscio, Monica Devito, Dorothy Dixius, Lisa Donadio, Jean Ann Douglass, Olympia Dukakis, Wilhelmina Eaken, Eve Ensler, Christine Evans, Catherine Fisher, Katherine Fisher, Maria Irene Fornes, Mary Fridley, Denise Ganjou, Laura Aimee Garn, Lucy Martin Gianino, Ilsa Gilbert, Leigh A. Giroux, Nancy Gruber, Russel Hamilton, Robert Hanning, Barbara Harris, Liz Hartman, Marcia Gay Harden, Marion L. Heard, Laura Heinrich, Beth Holland, Barbara Horowitz, Jane Hruska, Julie Hughes, Catherine Hyland, Morgan Jenness, Julie Jensen, Lanna Joffrey, Martha H. Jones, Sara Katz, Sara Kendall, Karen Kitchen, Debra Kozee, Diane F. Krausz, Harriet Lennard, Jake Lipman, Emily Mann, Miranda Massie, Dana Matthew, Ruth Mayleas, Cassandra Medley, Lavonne Mueller, Mark Napoletano, Joyce Carol Oates, Dorothy Olim, Carol Ostrow, Jerry Patch, Diane Paulus, Carey Perloff, Lisa Peterson, Linda Powell, Steve Queller, Rachel Reiner, Wendy Richmond, Lynne Rogers, Lisa Rothe, Arlene Scanlan, Laurie Scheinman, Allegra Schorr, Jeannie Segall, Mary Coxe Shlosser, Leigh Silverman, Harriet Slaughter, Paul Slee, Molly Smith, Peggy Stafford, Diane Stefani, Fredericke S. Taylor, Craig S. Thompson, Joan Vail Thorne, Greg Vitiello, Paula Vogel, Naomi Wallace, Kat Williams, Tamilla Woodard, Joanne Woodward

OUR SUPPORTERS

The Board of Directors and staff of Women's Project express sincere appreciation to our supporters, whose financial contributions allow us to bring our mission to life. The following represents contributions of \$100 or more received from December 1, 2007 to December 15, 2008.

Partner (\$25,000+)

Carnegie Corporation
Lila Acheson Wallace Theatre Fund/
New York Community Trust
Little Family Foundation/Jann Leeming
The Andrew W. Mellon Foundation,
New York Theater Program

New York City Department of Cultural Affairs
New York State Council on the Arts
Shubert Foundation
Kenneth I. Starr & Diane Passage

Sponsor (\$10,000+)

Leland E. & LaRita R. Boren
Iris & B. Gerald Cantor Foundation
Stella & Charles Guttman Foundation
FedEx Corporation
David Grant/Velocity Sports
& Entertainment, Inc.
Craig & Deborah Thompson/
Hudson Valley National Foundation

Lucille Lortel Foundation
National Endowment for the Arts,
Theatre Program
John Osborn/BBDO Worldwide
Shubert Organization, Inc.
Harold & Mimi Steinberg Charitable Trust
Time Warner Diverse Voices Program

Champion (\$5,000+)

Tina Chen
Consolidated Edison of New York
Julie Crosby
Malcolm Duncan
John Golden Fund
Annette Green
Martha H. Jones
Neil Katz L'Oreal USA

Frederick Loewe Foundation
Newman's Own Foundation
NYS Office of Parks, Recreation
& Historical Preservation
Rudin Foundation
Arlene Scanlan
Andrew Seidel
Michael Tuch Foundation, Inc.

Benefactor (\$2,500+)

American Theatre Wing
Axe-Houghton Foundation
The Mary Duke Biddle Foundation
Lynne Bolton
Bossak/Heilbron Foundation
Suzanne G. Fischer
Leigh A. Giroux
Lucia Hwong Gordon
Joelson Foundation/Barbara Joelson Fife
Lord & Taylor, Inc.

Supporter (\$1,250+)

Joanna Carson
Jennifer Chambers
James J. Claffey, Jr./IATSE Local One
Wayne W. & Karen Crosby
Count Me In for Women's
Economic Independence, Inc.
The Dramatists Guild Fund, Inc.
Edward & Lori Forstein

Playwrights (\$1,000+)

Peter A. & Erika Aron
Sallie Bingham
Edith C. Blum Foundation
Andreas Combuechen
Barbara J. Fife
Harriet Inselbuch
Iron Mountain/Richard Reese

Directors (\$500+)

James Avena
Sharon Bush
Dr. Mary Schmidt Campbell
Barbara B. Cohn
Liz Diamond
Helen Engelhardt
Eve Ensler
Rosann Eppolito-Needleman
Charlotte Ford
Fezzick Foundation
George Frangos
Greg Harris
Caroline Hsu-Baker
Tim Hunter Design
Elizabeth Kabler/The Rosenstiel Foundation
A. Laurance Kaiser
Sara & Peter Kendall
Hilda Kraker
Stephen S. Lash

Julia Miles
Westley Morris
Movado Group, Inc.
Paul Newman
New York Community Bancorp, Inc./
Atlantic Bank
Dr. Herb Pardes
Heather Randall
Donna Anne & Richard L. Soloway
Margaret Whitton/Jewish Communal Fund

Phyllis M. Freed
Pamela Gross
Chie & Chiaki Imai
Sabra Jones McAteer
Charles Moed
Carol Ostrow
Dorothy Strelsin Foundation
Joan Vail Thorne

Michael Reisman
Denise Rich
Mauro & Laura Romita
Fran Ruchman
Jan & Irv Snyder
Special Artists Agency

Lastfogel Foundation
Yasmine Leber
Mary Libby
John J. Loeb Foundation
Dr. Irena Mausner
Anthony Montenieri
Pamela Petri-Humphrey
Carol Ostrow
Laurice Rahme
Bruce S. Rosen
Neil Sedaka Foundation/
Neil & Leba Sedaka
Louis Scheeder
Tony Smith
George & Barbara Tober
Kenneth Warner
Inez S. Weinstein
Mildred & Geroge Weissman

Designers (\$250+)

Anonymous

Katherine Atkinson

Katherine Beard

Cornelia & Martin Bregman

Georgia Buchanan

Ann M. Butera

Kathleen Butler

Steven E. Cohen

Bryan Crosby

Beth Diamond

Joel & Doris Ingber

Fraydun Foundation/Jennifer Manocherian

Nancy Gibbs

Goldman Sachs & Company

Sheila Gordon

Jade A. Guanchez

Catherine Hyland & Richard Bruno

Lisa Pittelman

Daryl Roth

Jim & Donna Treischmann

Sarah Valente

Tamilla Woodard

Actors (\$100+)

Maria Anguah-Boafo

Kim James Bey

Michael Cameron

Nancy Ford Charles

Bruce Cohen

Jean Lahage Cohen

Ryan Cotton

CRM Management/

Thomas Fontana

Lisa & Diego Cusano

Blythe Danner

Susan Elrod

Nancy Franklin

Louise Forsyth

Aimee Garn

Lucy Martin & Jack Gianino

Nancy & Ralph Goudreau

Russel Hamilton

Beth Holland

Julie Hughes

Diane Krausz

The Krupman Family
Foundation

Brian F. Lavin

Harriet Lennard

Harriet N. Leve

Lawrence Levin

Karen Libman

Patricia H. Lin

Michael Lonegran

Therese Long

Dana Matthow

Ruth Mayleas

Patricia McNamara

Harriet Molk

Joseph P. Morra

Irma Oestreicher

Gail Parenteau &

Matthew J. Brief

Brette Popper & Paul Spraos

Karen & Joseph Potenza

Errol Rappaport

Sheilah Ray

Susan K. Reed

Labonne Robert

Sheila Roher

Vivian Ryle

Nicole Seidel

Allegra Schorr

Marion Simon

Spring Sirkin

Harriet Slaughter

Connie Tirschwell

Sorrel Tomlinson

Daniella Topol

Jane A. Vipond

Katherine & Sam Willett

In-Kind Legal Services generously provided by Leigh A. Giroux, Dumler & Giroux.

In-Kind Publicity Services generously provided by Bruce Cohen, The Bruce Cohen Group.

For further information about the benefits of patronage, or to report an error or omission in this list, please contact our Development Office at (212) 765-1706 x 200. Thank you!

WP Business Partners

1 Dominick

Bottlenotes.com

Brazil, Brazil Restaurant

Flute Champagne Bar

Hurley's Bar & Grill

Jimmy's No. 43

Matt's Grill

Route 66 Café

Andrea Harring Voice Instructor

Dr. Lila Wolfe Life Chiropractic

Ars Nova Theater

Levitate Yoga

Liberal Card

Love Yoga with Shari Kaplan

Meg, an East Village Clothing Boutique

SOHO Sanctuary Day Spa

Touch, night club



SITI Company is an ensemble-based theater company led by Anne Bogart.

Its mission is:

- To create bold new productions;
- To perform and tour these productions nationally and internationally;
- To train together consistently;
- To train theater professionals and students in an approach to acting and collaboration that forges unique and highly disciplined artists for the theater; and,
- To create opportunities for artistic dialogue and cultural exchange.

Founded in 1992 by Anne Bogart and Tadashi Suzuki, SITI Company began as an agreement to redefine and revitalize contemporary theater in the United States through an emphasis on international cultural exchange and collaboration. Originally envisioned as a summer institute in Saratoga Springs, New York, SITI expanded to encompass a year-round company based in New York City with a summer season in Saratoga. The Company is known nationally and internationally as a top-level artistic collective that generates groundbreaking theater while also training artists from around the world.

In addition to Artistic Director Anne Bogart, SITI Company is comprised of nine actors, four designers, a playwright, a stage manager and an executive director. The company represents a change in thinking about the relationships between artists and institutions. SITI Company has formed relationships with theaters and venues around the world who present the Company's work.

SITI recently premiered *Who Do You Think You Are* at the Arizona State University Gammage. Other recent works include: *Radio Macbeth* at the Wexner Center for the Arts at The Ohio State University, *Hotel Cassiopeia* at the Humana Festival of New American Plays at Actors Theatre of Louisville, and *Intimations for Saxophone* at the Arena Stage in Washington, D.C. Future productions include: *Soot and Spit*, *Under Construction*, *Empire of Light* and *The Seagull*. SITI Company and its members have won numerous awards including Obies, Drama Desks, EDDYs, and many more.

One of the most important aspects of SITI's work is the teaching of two training techniques to actors and theater artists throughout the United States and the world. The Viewpoints and the Suzuki Method of Actor Training are two distinct methods of actor training used in building and staging SITI productions. SITI Company members, all of whom have been trained by Anne Bogart and Tadashi Suzuki, are specially qualified to introduce and train other theater artists in these approaches.

Sign up for our e-newsletter (www.siti.org) and join the SEE (SITI Extended Ensemble) Network (<http://siti.collectivex.com>) or Facebook group – these are all great ways to be kept up to date on what's happening with SITI Company's training, production tours and events.

SITI COMPANY

Akiko Aizawa
J. Ed Araiza
Anne Bogart
Will Bond
Leon Ingulsrud
Ellen Lauren
Kelly Maurer
Charles L. Mee, Jr.
Elizabeth Moreau

Tom Nelis
Barney O'Hanlon
Neil Patel
James Schuette
Brian H Scott
Megan Wanlass Szalla
Stephen Webber
Darron L West

SITI COMPANY BOARD OF DIRECTORS

Gigi Bolt, *Interim Chair*
Lynn Cohen
Ron Cohen
Martha Coigney
Barbara Olsen Cummings
Lauren Flanigan

Rena Chelouche Fogel
Cherry Jones
Thomas Mallon
Leonard Perfido
Paula Vogel

SITI COMPANY STAFF

Megan Wanlass Szalla, *Executive Director*
Roberta Pereira, *Associate Producer, Development & Marketing*
David Roberts, *Associate Producer, General Management & Programming*
Al Foote, *Webmaster*
Noa Rotem, *Intern*

CONSULTANTS

Ellen Pearre Cason, *Accountant*
James Harley, *Graphic Designer*
Thomas Mallon, *Attorney*
Barbara Janowitz and Michael Ross, *Strategic Planning*

CONTACT INFORMATION

520 8th Ave. Ste. 310
New York, NY 10018
212-868-0860 telephone
212-868-0837 facsimilie
inbox@siti.org
www.siti.org

EXCLUSIVE WORLDWIDE TOUR REPRESENTATION

H-Art Management, Harold Norris
481 8th Ave. Ste. 834
New York, New York 10001
212-868-2134 telephone
Harold@h-artmanagement.com
www.h-artmanagement.com

SITI Company is deeply grateful to the generous donors who are listed below

INDIVIDUALS

SITI Inner Circle (\$10,000+)

Anne Bogart

Joan H. and Robert B. Parker

Jeanne Donovan Fisher and Richard B. Fisher

SITI Circle (\$1,000 – \$9,999)

Marc Allison & Stephanie Holmquist

Charles Mee, Jr.

Carolyn Anderson

Ward & Lucy Mooney

Anne Donovan Bodnar

Joanne Cregg Smith & Daniel C. Smith

Rena Chelouche Fogel

Leonard P. Perfido & Ruth S. Perfido

Tylor Field, III

Sarah Plimpton

James M. Gillson

Jean Stein

Victoria & Matthias Gohl

Wendy vanden Heuvel

Cherry Jones

George R. Wanlass & Karen Carson

Jeffrey D. J. Kallenberg

Lorna Wanlass

Paul E. Kellogg & Raymond G.J. Han

Jaen Whitehead

Richard Lagravenese

Friends of SITI (up to \$999)

Mary Lou Aleskie

Judy Guido

Patricia Anne Miller

J.Ed Araiza

Annie Hamburger &

Tina Mitchell

Ken Barnett

Ralph Jenner

Elizabeth Moreau

Beth Boone

Nicole Borrelli Hearn

Wendy Morrill

Gigi Bolt

Dawn Helsing

Adale O'Brien

Brad Carlin

Holly Hendrix

Carol Ockman

Sue & Worth Carlin

Richard Hess

Barney O'Hanlon

Ellen Cason

Susan Hightower

Jackie O'Hare

Judith B. Chaffee

Jeffrey Hill

Flora Plumb

Angela Chamberlin

Karen Brooks Hopkins

Brian Reid

Tucker Chase

Tyson Holmes

Sophia Remolde

Katherine Clarvoe

Dave Horak

Joan B. Reutershan

Ronald T. Cohen &

Jen Johansen

KJ Sanchez

Lynn Cohen

Thomas A. Juarez

Sofia Sequenzia &

Martha Coigney

Gabriel Kalomas

John M. Shostrom

Julie Crosby

Daniel Kaslow

Risa Shoup

Julie Cursi

Brian Kulick

Katherine Spelman

Barbara & Jim Cummings

(Classic Stage Company)

Elizabeth Spreen

Tove-Lin Dalmau

Fran Kumin & Dick Ticktin

Ruth Sternberg & Liz Rosier

Suzanne Delle

Roslyn Leopold

Liz Stott & Erich Augenstein

Acacia Duncan

Jane & Dan Lindau

Rebecca Strang

Erma Duricko

Virginia P. Louloudes

R. Lee Stump

Bonnie Eckard

William Lynch

Narcissa Titman

Katie Embree

Ruth & Romain Macomb

Cott Troost & Shannon Fillion

Dina Emerson

George Mayer

Deborah Wallace

Caryl S. Englander

Thomas L. Mallon

Robert & Ann Webber

Rebecca Engle

Catherine & Matt Mandel

Micki Wesson

Leslie Ferreira

Kara Manning

Julia Whitworth &

Britton Fisher

Marc Masterson &

Ray Neufeld

Todd M. Fisher

Patricia Melvin

Misti Wills

Jeffrey Frace

Donnie Mather

Debra Winger & Arliss Howard

David R. Gammons

Julio Matos

Francesca Zambello

Marita Gochman

Mitchel R. McElya

FOUNDATION, GOVERNMENT, AND CORPORATE SUPPORT

SITI Company has been selected to take part in Leading for the Future: Innovative Support for Artistic Excellence, a groundbreaking new arts initiative created by Nonprofit Finance Fund (NFF) and funded by the Doris Duke Charitable Foundation.

Patrons (25,000+)

Carnegie Corporation of New York
The Andrew W. Mellon Foundation,
New York Theater Program, administered
by the New York Foundation for the Arts

The National Endowment for the Arts
Public Funds from New York City Department
of Cultural Affairs
The Robert Sterling Clark Foundation, Inc.

Benefactors (\$10,000 – \$24,999)

The Edith Lutyens and
Norman Bel Geddes Foundation
The Fan Fox & Leslie R. Samuels Foundation
The Jerome Foundation

The New York State Council on the Arts
The Shubert Foundation
The Trust for Mutual Understanding

Sponsors (\$1,000 – \$9,999)

Altria Group, Inc.
Disney Worldwide
The JKW Foundation
The Lucille Lortel Foundation, Inc.
The Netherland-America Foundation

New York Times Company Foundation
Fund for Midsize Theatres, a project
of A.R.T./New York
Reed Smith LLP
Tobin Foundation for Theatre Arts

Supporters (up to \$999)

Cason & Company
Centre Group Holdings, Ltd.
International Creative Management

San Jose Repertory Theatre
Time Warner

To become a contributor to the SITI Company, call the office at 212-868-0860 or visit www.siti.org.
All donations listed in this program include gifts and pledges received through November 2008.

Women's Project presents

GLOBAL COOLING: THE WOMEN CHILL

written, directed & produced by
WP Lab members

From June 3-7, 2009, watch as members of the WP Labs transform the World Financial Center during WP's annual site-specific extravaganza!

Following the success of *GIRLS JUST WANNA HAVE FUNDS* (2007) and *CORPORATE CARNIVAL* (2008) at the World Financial Center in lower Manhattan, this world premiere production of *GLOBAL COOLING: THE WOMEN CHILL* promises to astonish and surprise you.

World Financial Center
200 Vesey Street (between West St and North End Ave)
Battery Park City

STRICTLY LIMITED RUN

*The one and only play written by
Virginia Woolf*

Women's Project & SITI Company present

freshwater

directed by Anne Bogart



January 15 – February 15, 2009

Julia Miles Theater, 424 West 55th Street www.WomensProject.org www.SITI.org

WWW.TELECHARGE.COM or 212.239.6200

Theater. Dance.
Film. Music.
Spoken Word.

Life is a stage.

Find your passion
at encoremag.com.

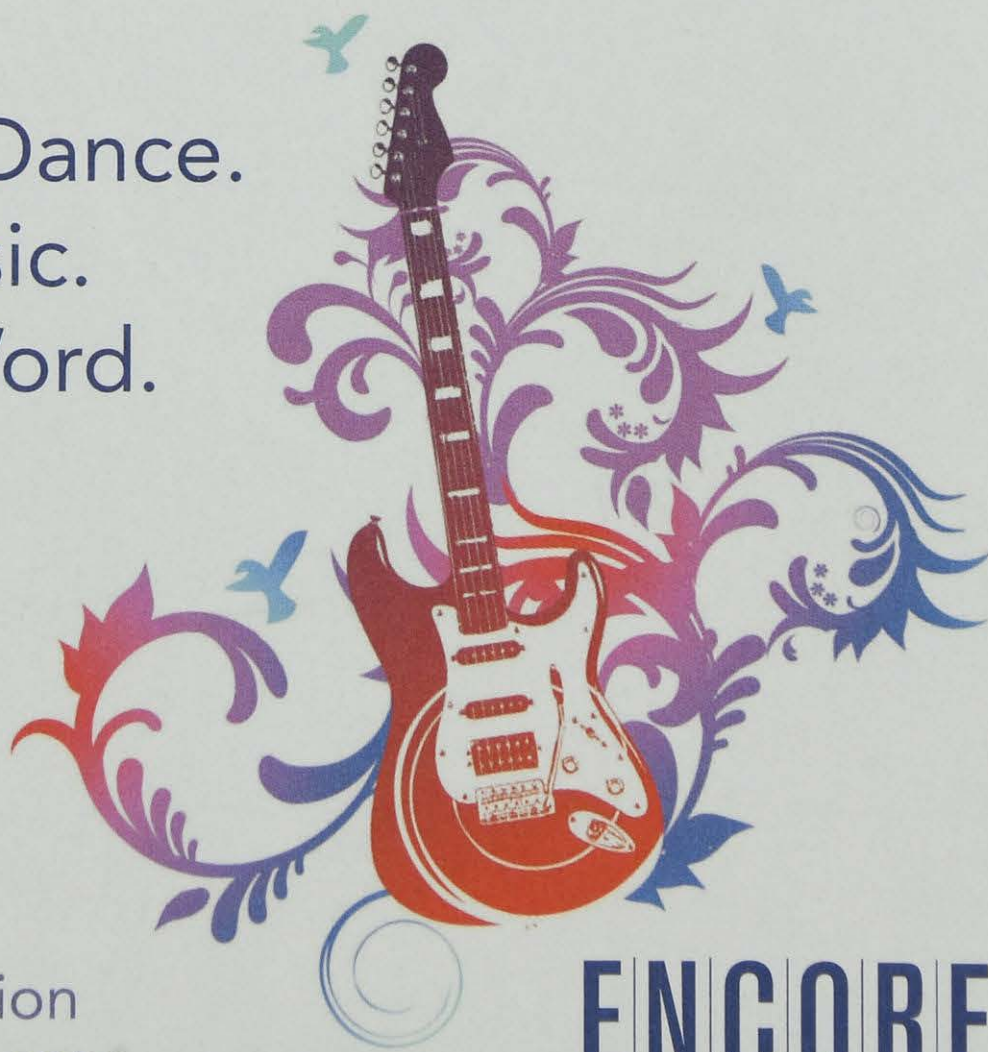


ILLUSTRATION: Piotr Ciuchta

ENCORE
The Performing Arts Magazine