

A Midsummer Night's Dream

WRITTEN BY William Shakespeare

DIRECTED BY Anne Bogart

CREATED AND PERFORMED BY SIT Company

JANUARY 24 - FEBRUARY 22, 2004



SAN JOSE
REPERTORY THEATRE
Sobrato Auditorium

ABOUT SAN JOSE REP

IT IS OUR MISSION AT SAN JOSE REPERTORY THEATRE to stimulate, celebrate and enhance understanding of ourselves and others through the shared experience of live theatre. The Rep produces a variety of new plays and classics marked by innovative interpretations, a creative use of music and dance, and a reflection and inclusion of the community and the world in which we live. The Rep contributes to the growth of theatre in America through a variety of new play commissions and development programs. The Rep offers extensive outreach and education programs to the local community. Programs include student matinees, post-show discussions, artists in the schools, speaker forums, and the nationally recognized Red Ladder Theatre Company.

San Jose Repertory Theatre's programs are made possible by support from the City of San José and the National Endowment for the Arts, as well as generous contributions from corporate, foundation and individual donors.

San Jose Repertory Theatre is a member of Theatre Communications Group, the League of Resident Theatres, Theatre Bay Area and the San Jose Arts Roundtable, and operates under an agreement between the League of Resident Theatres and Actors' Equity Association, the Union of Professional Actors and Stage Managers in the United States. Directors are members of the Society of Stage Directors and Choreographers, Inc., an independent national labor union. •

FOR YOUR INFORMATION

Late Seating Late patrons cannot be seated until intermission or a designated seating break. Patrons returning late from intermission will be seated at the discretion of House Management.

Recording Equipment The use of sound, video or photographic recording equipment during performances is prohibited.

Listening Devices For patrons with impaired hearing, listening devices are available free of charge. Please see the House Manager for details.

Noise Please refrain from talking, opening wrappers, or other distractions that keep fellow patrons from hearing the performance. Anyone disturbing audience members will be asked to leave.

Pagers As a courtesy to other patrons, please turn off all watch alarms, pagers and cellular phones.

Children Children under the age of three are not permitted at mainstage performances. Patrons are encouraged to use discretion when bringing any child to the theatre. Every person, regardless of age, must purchase a ticket.

No Smoking Smoking in the auditorium and lobby is prohibited at all times. Smoking is only permitted on the Paseo.

Concession Services Food and drink are allowed in the lobby area of the theatre only. Intermission drinks can be ordered prior to the start of the performance. The right is reserved to refuse service to anyone. Refreshments and chewing gum are not allowed inside the auditorium.

Thank You For Your Cooperation And Enjoy The Show.

SAN JOSE REPERTORY THEATRE

SITICOMPANY

HITACHI
DATA SYSTEMS

present

A Midsummer Night's Dream

WRITTEN BY **WILLIAM SHAKESPEARE**

DIRECTED BY **ANNE BOGART**

CREATED AND PERFORMED BY **SITI COMPANY**

Set Design

Costume Design

Lighting Design

Original Music & Sound Design

Production Stage Manager

Set & Lighting Associate Designer

Assistant Director

Assistant Set Designer

Assistant Stage Manager (California)

Assistant Stage Manager (New York)

Neil Patel**

Gabriel Berry**

Christopher Akerlind**

T. Griffin

Elizabeth Moreau*

Brian Scott

Gisela Cardenas

Timothy Mackabee

Nicole Olson

Maria Goyanes

CO-SPONSOR



PARTICIPATING SPONSOR: THOMAS WEISEL PARTNERS

*Supported by grants from The James Irvine Foundation,
Mellon Foundation and Myra Reinhard Family Foundation.*

COVER BY MEL LINDSTROM PHOTOGRAPHY

CAST

(in alphabetical order)

Lysander, Flute (Thisbe), Cobweb	J. Ed Araiza*
Hippolyta, Titania	Ellen Lauren*
Helena, Snug (Lion), Mustardseed	Kelly Maurer*
Theseus, Oberon, Quince	Tom Nelis*
Puck	Barney O'Hanlon*
Hermia, Starveling (Moonshine), Moth	KJ Sanchez*
Demetrius, Snout (Wall), Peaseblossom	Stephen Webber*
Egeus, Bottom	Chris Spencer Wells*

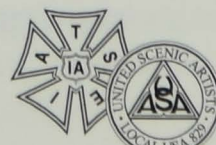
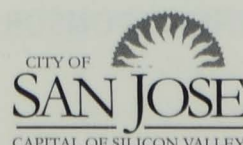
There will be one 15-minute intermission.

**Members of Actor's Equity Association, the union of professional actors
and stage managers in the United states.*

***Members of the United Scenic Artists Union (USA).*

Exclusive Tour Representation:

Rena Shagan Associates, Inc., 16A West 88th Street, New York, NY 10024
212.873.9700tel 212.873.1708fax www.shaganarts.com



ssdc

The Director is a member of the *Society of Stage Directors and Choreographers, Inc.*,
an independent national labor union.

Notes from the ARTISTIC DIRECTOR

DEAR PATRONS,

THE 2003-04 SEASON is a season that draws on and challenges the imaginations of our artists and our audience. Thus far you have experienced the sparse and romantic beauty of *Mary's Wedding* and the rollicking journey into the performance art form of Charles Mee. The work of director Anne Bogart and her SITI Company is even more experimental and offers an unique and thrilling theatre experience. I have been an admirer of Bogart's work for years and am pleased to be able to introduce the San Jose audience to her art.

Timothy Near



Photo: Tom Chargin

Notes from the DIRECTOR

ART IS A CONSTANT REMINDER that the world we inhabit is far richer, multifaceted and mysterious than the repetitions of our day-to-day lives would lead us to assume. Near the end of the journey of *A Midsummer Night's Dream*, after being blinded by desire, darkness, drugs and magic, the lovers awaken to realize that they own nothing, know nothing and understand less than ever.

Demetrius

These things seem small and undistinguishable,
Like far-off mountains turned into clouds.

Hermia

Methinks I see these things with parted eye,
When everything seems double.

Helena

So methinks;
And I have found Demetrius like a jewel,
Mine own, and not mine own.

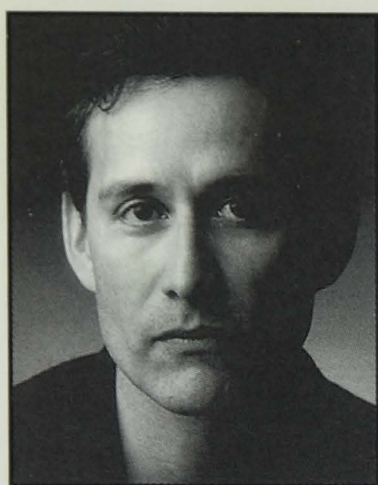
Demetrius

Are you sure
That we are awake? It seems to me
That yet we sleep, we dream.

Shakespeare widened the definition of what it means to be human. In a world shrunk by aggressive media, fast-paced modes of survival and the constant bright onslaught of endless electrical daytime, I find grace in the magnificent dark and moist landscapes of William Shakespeare's imagination. We are better for it.

—Anne Bogart

CAST Profile



J. Ed Araiza

(*Lysander, Flute [Thisbe], Cobweb*)

SITI Company credits include: *bobrauschenberg-america*, *Culture of Desire*, *The Medium*, *Small Lives/Big Dreams*, *War of the Worlds* and *War of the Worlds—The Radio Play*

at Actors Theatre of Louisville, New York Theatre Workshop, Walker Arts Center, City Theatre in Pittsburgh, Wexner Center, Theatre Artaud in San Francisco, Dublin Theatre Festival, Toga Arts Festival, Olympic Arts Festival, The Public Theatre, The Kennedy and Edinburgh International Festival, Brooklyn Academy of Music and other venues. Regional Theater: *The Cure at Troy*, Yale Rep; *Santos and Santos*, Mixed Blood Theatre; *Keely and Du* (original cast), Hartford Stage and ATL; *1969* and *Picnic*, ATL; *Yerma*, Arena Stage; *Principia Scriptoria*, A Contemporary Theatre; *Charley Bacon*, South Coast Rep; *King Lear*, *Macbeth*, *La Victima*, Los Angeles Theatre Center. Off Broadway: *Orestes*, *Occasional Grace*, *En Garde Arts*; *Words Divine*, *Intar*; *Eastern Standard*, *Duo Theatre*; *Body Game*, *Theatre for the New City*; *Raft of the Medusa*, *Minetta Lane Theatre*. He has written the original plays *Medeastories* and *c/o The Grove*, both of which he directed in Austin, TX. J. Ed was a member of *El Teatro de la Esperanza* and is a member of the *Dramatist Guild* and *Austin Script Works*. His newest play, premieres this spring in Austin. He teaches and studies with SITI Company.



Ellen Lauren

(*Hippolyta, Titania*)

is the associate artistic director for SITI Company. National and international SITI credits: *Room*, *bobrauschenbergamerica*, *War of the Worlds*, *Cabin Pressure*, *The Medium*, *Culture of*

Desire, *Going, Going, Gone*; *Orestes*. ART: *La*

Dispute (Egle); *Actors Theatre of Louisville* (ATL): *Hay Fever* (Judith), *Miss Julie* (Julie), *Private Lives* (Amanda). For the last 12 years, ongoing classes and residencies in the U.S. and abroad. Additional credits include *The Adding Machine* (ATL), *Picnic* (ATL), *The Women* (Hartford Stage), *Marina: A Captive Spirit* (American Opera Project), *Seven Deadly Sins* (New York City Opera; Kosovar Award for *Anna II*), all with Anne Bogart. Resident company member: *Stage West* (Springfield, MA), *The Milwaukee Repertory*, *The Alley Theatre* (Houston, TX). Guest artist, 12 years, *Suzuki Company of Toga* (SCOT) and *Shizuoka Performing Art Company* (SPAC), under the direction of Tadashi Suzuki; touring North and South America, Europe, Russia and Japan (venues include: *Moscow Art Theatre*, *Herod Atticus* in Athens, *Teatro Olimpico* in Italy and recently the *Zellerbach Playhouse* in Berkeley, CA. Ongoing faculty member: *The Julliard School of Drama*, New York City, Associate Director Summer Training Program in Toga, Japan.



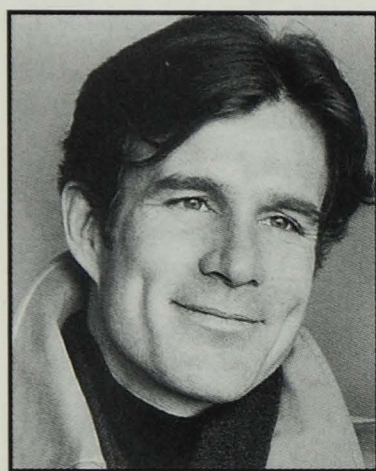
Kelly Maurer

(*Helena, Snug [Lion], Mustardseed*)

has been a member of SITI Company since its inception. With the company she has performed in many productions including *La*

Dispute, *Hay Fever*, *bobrauschenbergamerica*, *The Medium*, *Small Lives/Big Dreams*, *Culture of Desire* and *Cabin Pressure*, and at such theatres as: NYTW, BAM, *Actors Theatre of Louisville*, *Walker Arts Center*, *Wexner Center*, *The Irish Life Theater Festival* and the *Edinburgh Festival*. Kelly also performed with the company in the *New York City Opera's* production of *The Seven Deadly Sins*. Regionally, Kelly has been seen as *Rainbow* in *Maria Irene Fornes' And What of the Night* at *The Milwaukee Repertory Theatre*, *Hamlet* at *StageWest* and *Christine* in *Miss Julie* at *Actors Theatre of Louisville*. Internationally, she has toured with Tadashi Suzuki in the *Suzuki*

Company of Toga's *Dionysus* and director Robert Wilson in *Persephone*. She performed the role of Jolly (as standby for Patti LuPone) in David Mamet's *The Old Neighborhood* on Broadway. She also performed in *An Adult Evening of Shel Silverstein* and *The Water Engine* at Atlantic, Off Broadway. Kelly teaches the Suzuki method of actor training and the Viewpoints training with SITI and at the Atlantic Theater Acting School, NYU and at workshops and universities throughout the U.S.



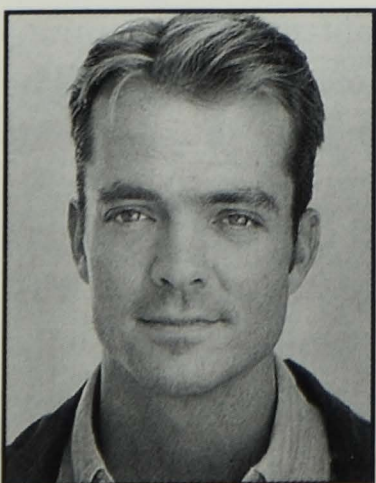
Tom Nelis

(*Theseus, Oberon, Quince*)

With the SITI Company: *Orestes*; *The Medium* (Obie Award); *Going, Going, Gone* (The Magic Theatre); *War of the Worlds—Radio Play*; *War of the Worlds*; *Lilith*;

Score and *Dionysus*, a

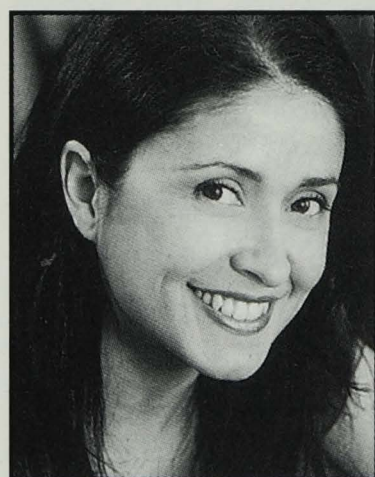
collaboration with The Suzuki Company of Toga. Also: *Aida* (The Palace Theater, Broadway); *Wintertime* (La Jolla Playhouse, Long Wharf); Ahab in Laurie Anderson's *Songs and Stories from Moby Dick* (World Tour, Zellerbach); the title role in *Henry VI* (Joseph Papp Public Theatre); Oscar Wilde in *Gross Indecency: The Three Trials of Oscar Wilde* (Theatre on the Square, Minetta Lane); *Hot Mouth* (Manhattan Theatre Club); Richard Foreman's *Pearls for Pigs* (World Tour); D.H. Lawrence in *I Rise in Flames Cried the Phoenix* (HERE). Mr. Nelis teaches Suzuki Technique and Viewpoints Training for the SITI Company as well as at the University of Pennsylvania and Princeton University. M.F.A. University of California, San Diego.



Barney O'Hanlon

(*Puck*) has been collaborating with Anne Bogart since 1986. As a member of SITI Company he has performed nationally and internationally in productions of *La Dispute*, *Hay Fever*,

bobrauschenbergamerica, *War of the Worlds*, *War of the Worlds—Radio Play*, *Cabin Pressure*, *Culture of Desire* and *Small Lives/Big Dreams*. He recently choreographed and performed in the world premiere of *Nicholas and Alexandra* at the Los Angeles Opera, *Lilith* at New York City Opera and *Seven Deadly Sins* also at NYCO, all with SITI. Other Bogart collaborations include productions at the Alley Theatre, Trinity Rep, River Arts Rep and Opera/Omaha. Other regional credits include Tina Landau's *1969* at ATL, *Stonewall: Night Variations* for EnGarde Arts, *Deadly Virtues* and *Hamlet* at ATL, and Jon Robins Baitz's *A Fair Country* for Steppenwolf. His choreography has appeared at BAM's Harvey Theater, New York Theatre Workshop, and at the Prince Music Theatre. He has worked with choreographers Doug Varone, Doug Elkins, Spencer/Colton, Creach/Koester, and directors Robert Wilson, Richard Foreman, Molly Smith, and Brian Jucha.



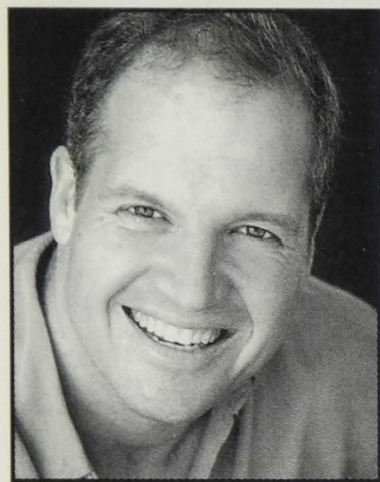
KJ Sanchez

(*Hermia, Starveling [Moonshine], Moth*)

A former SITI Company member, KJ is delighted to be working with Anne and SITI again. With SITI: *Small Lives/Big Dreams*, *Going, Going, Gone*, *Private Lives* and

Culture of Desire. Also with Ms. Bogart: *Picnic* (Actors Theatre of Louisville) and *The Women* at San Diego Rep and Hartford Stage. Recent performances include *Paris Commune* and *Nobody's Lunch* with The Civilians. Favorite roles include Thyona in *Big Love* at the 2000 Humana Festival, Long Wharf Theater, Berkeley Rep, The Goodman and the 2001 BAM Next Wave Festival, as well as *Ophelia and Juliet*, both for Jon Jory at the Actors Theatre of Louisville. T.V. credits include *Law and Order*, *ER*, *The Apollo Comedy Hour*, *Homeboys in Outerspace* and *One Life to Live* and the voice of many creatures on the Nickelodeon cartoon *Dora the Explorer*. She is also a director and will be directing her play, *Panaphobia* for the University of Washington's MFA program this Spring. KJ is a William and

Eva Fox Foundation fellow, a Drama League Directing fellow, and a 2003 NEA/TCG CDP for Directors recipient.

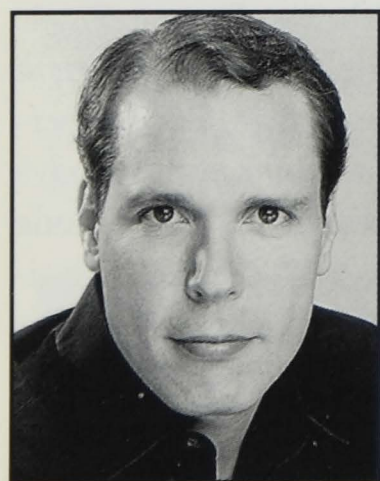


Chris Spencer Wells

(*Egeus, Bottom*)

recently moved from Los Angeles to New York City and is thrilled to be working with Anne and the SITI Company. New York:

Nobody's Lunch with the Civilians; *Speed Hedda* at LaMama; *Tragedy in Nine Lives* at PS 122. Regional: *Medea*, *MacBeth*, *Cinderella* at Yale Rep; *Good Person* at Long Wharf; *A Happy End* at Geffen Contemporary; *LAX10* at Getty Center; *Nowhere to Run* at Mark Taper Forum; *Harry Thaw Hates Everybody* at Los Angeles Theatre Center; *A Beautiful Country* with Cornerstone Theatre Company. With The Actors' Gang, Wells appeared in *Euphoria the Musical*, *The Imaginary Invalid* and *Batboy! The Musical*. Mr. Wells creates original music and cabaret pieces for himself and his band, *Christy and The Nono's*, and has written a solo piece, *Liberty!*, that has appeared around the U.S. In addition, Wells is co-artistic director, with Tracy Young, of BOTHarts, a theatre arts company dedicated to creating original work for the stage.



Stephen Webber

(*Demetrius, Snout [Wall], Peaseblossom*)

has performed with SITI Company in theaters all over the U.S. and at festivals around the world including The Kennedy Center, The Edinburgh Inter-

national Theatre Festival, The BAM Next Wave Festival, The Humana Festival of New American Plays, Teatro Iberoamericano-Bogota, The Wexner Center for the Arts, The Israel Theater Festival and the Toga International Arts Festival, Japan. SITI credits: *War of the Worlds*

(Orson Welles), *Cabin Pressure*, *Private Lives*, *La Dispute*, *The Medium*, *War of the Worlds—The Radio Play*, *Culture of Desire*, *Going, Going, Gone*, *Hay Fever* and *Short Stories*. He has also performed in two operas with Anne Bogart and SITI, *Nicholas and Alexandra* at Los Angeles Opera and *Marina: A Captive Spirit* at America Opera Project. Off Broadway: *Trojan Women/A Love Story* at En Garde Arts and *Culture of Desire* at New York Theatre Workshop. Regional Theater: American Repertory Theatre, Actors Theatre of Louisville, Stage West, Portland Stage Company, Magic Theater, City Theatre in Pittsburgh, and Milwaukee Repertory Theater.

Anne Bogart (*Director*) is the Artistic Director of the SITI Company, which she founded with Japanese director Tadashi Suzuki in 1992. She is a recipient of two Obie Awards, a Bessie Award, a Guggenheim Fellowship and is an Associate Professor at Columbia University where she runs the Graduate Directing Program. Recent works with SITI include *La Dispute*; *Score*; *bobrauschenbergamerica*; *Room*; *War of the Worlds*; *Cabin Pressure*; *War of the World—The Radio Play*; *Alice's Adventures*; *Culture of Desire*; *Bob*; *Going, Going, Gone*; *Small Lives/Big Dreams*; *The Medium*; Noel Coward's *Hay Fever* and *Private Lives*; August Strindberg's *Miss Julie*; and Charles Mee's *Orestes*. Other recent productions: *Nicholas and Alexandra*, Los Angeles Opera, *Marina: A Captive Spirit* (American Opera Project), *Lilith* and *Seven Deadly Sins* (New York City Opera).

Neil Patel (*Set Designer*) Neil Patel's work in the theater and opera is known to audiences throughout the world. His design for the Tony Award winning *Side Man* was seen on Broadway, the West End, and the Kennedy Center and his design for the Pulitzer Prize winning *Dinner With Friends* was seen in New York at the Variety Arts Theater and on National Tour. With acclaimed Japanese director Amon Miyamoto he has designed Leonard Bernstein's *Candide* at the Tokyo International Forum with the Tokyo Philharmonic conducted by Yutaka Sado and *Le Nozze di Figaro* at the Tokyo Bunka

Kaikan. His work with Anne Bogart and the SITI Company, of which he is a member, has been seen at the Edinburgh International Festival, the Exit Festival in Paris, the Holland Festival, the Hebbel Theatre in Berlin, Theatre Archa in Prague, New York Theater Workshop and at the Brooklyn Academy of Music where *War of the Worlds* launched the 2000 Next Wave Festival. He has designed the world premieres of plays by such writers as Tony Kushner, David Rabe, John Guare, Donald Margulies, Warren Leight, Craig Lucas, Neil LaBute, Chuck Mee and Doug Wright and has collaborated with such directors as Daniel Sullivan, Michael Mayer, Anne Bogart, Robert Woodruff, Ron Daniels, Barry Edelstein, Marion Isaac McClinton, Des McAnuff, Amon Miyamoto and Emily Mann. His work has been seen at most of the major theatres in the United States including The Manhattan Theater Club, Guthrie Theater, Theater for a New Audience, Joseph Papp Public Theatre, Roundabout Theatre, Mark Taper Forum, McCarter Theater, La Jolla Playhouse, Center Stage, American Repertory Theatre, New York Theater Workshop, Alley Theatre, Long Wharf Theatre, Alliance Theater and Hartford Stage. He has received numerous Drama Desk nominations, Drama Logue Awards, an OBIE award for sustained excellence in both 1996 and 2001, and a 2000 EDDY award, given by Entertainment Design Magazine. Mr. Patel was educated at Yale College, Accademia di Belle Arti Brera and the University of California at San Diego. Future projects include the world premiere of *Madame Mao* by Bright Sheng and directed by Colin Graham at the Santa Fe Opera, *Don Giovanni* directed by Amon Miyamoto at the Tokyo Bunka Kaikan in 2004 and *Alcina* at the New York City Opera directed by Francesca Zambello in 2003.

Gabriel Berry (*Costume Designer*) Works with Anne Bogart include: *No Plays, No Poetry*, *The Medium* and *Small Lives/Big Dreams*. World premieres include the works of Charles Ludlam, Maria Irene Fornes, Samuel Beckett, Sam Shepard, Steve Tesich, Eric Bogosian, Chuck Mee Jr., Tony Kushner and John Guare. Recent

work includes *The Mother of Us All* for the San Francisco Opera, *Henry V* directed by Mark Wing Davey for N.Y.S.F.'s Shakespeare in the Park, *Pericles* directed by Andrei Serban at the American Repertory Theater, Will Power's *Flow* for New York Theater Workshop and Meredith Monk and Ann Hamilton's *Mercy* at the Brooklyn Academy of Music. Upcoming projects include Christopher Alden's production of *The Valkyrie* for Eos Orchestra, JoAnne Akalaitis' production of *The Birthday Party* for ART and *Light Raise the Roof* for New York Theater Workshop. OBIE and Bessie award winning, Ms. Berry became the only American ever to win an individual medal at the Prague Design Quadrennial when she was awarded the silver medal for her contribution to experimental theater.

Christopher Akerlind (*Lighting Designer*) has designed over 380 productions at theater and opera companies across the country and around the world. His work with the SITI Company includes *Room*, *Score*, *La Dispute* and the L.A. Opera premiere of Deborah Drattell's *Nicholas and Alexander*. Recent projects include *Julius Caesar* for Houston Grand Opera, Adam Guettel and Craig Lucas' new musical *The Light in the Piazza*, *King Lear* at the Dijon Festival "Frictions", *The Tale of Genji* at Tokyo's Nissei Opera, *Boris Godunov* at the Hamburgische Staatsoper, *Cymbeline* at the Royal Shakespeare Company, *The Tale of the Allergist's Wife* on Broadway and *Don Juan* for Theater For A New Audience. He is the recipient of an Obie Award for Sustained Excellence in Lighting Design, the Chicago area's Michael Merritt Award for Design and Collaboration and numerous nominations for the Drama Desk, Lucille Lortel, Outer Critics Circle and Tony Awards.

T. Griffin (*Original Music and Sound Designer*) is a songwriter, musician and producer based in New York City. He has released two CDs of songs on the Shiny Little Records label: *Tortuga*, (1999) and *Light in the Aisles* (2001). In 2004 he will release *Redbirds*, which was recorded over the last year with a large, loose ensemble called The T. Griffin Coraline. In addition to his CDs, he has made music for film, includ-

ing the soundtrack for Eric Martz' *The Federation of Black Cowboys* (Mixed Greens Productions) which premiered at the 2003 Edinburgh Film Festival, and the recently completed film *Alice's House* by Peter Sillen. He has worked frequently with filmmaker Jem Cohen, including an evening of improvised super-8 film and music called *8-Ball*, (*Corner Pocket*) (Collective Unconscious, N.Y.C.), original music and remixes of the band *godspeed you! black emperor* for *Chain x 3*, (MoMA/Walker Art Center) and original music alongside Sparklehorse for *Blood Orange Sky*. For the DVD of Cohen and Sillen's *Benjamin Smoke* he recorded a song with Vic Chesnutt, which appears along with a film of the session. Other dance/theater music includes scores for Kristin Marting's *Erendira* (2003) and *Dead Tech* (2002) both commissioned by HERE (N.Y.C.). Griffin spent six years working as an actor and credits include three years as a principal company member with The Margolis Brown Company in Minneapolis and roles on stages from The Guthrie to P.S. 122. Griffin studied with the SITI Company in Saratoga Springs in 1997 and is delighted to reconnect with them on this project.

Elizabeth Moreau (*Company Stage Manager*) With SITI Company, Elizabeth has worked on the creation of *systems/layers*, *La Dispute*, *Score*, *Marina: A Captive Spirit*, *Hay Fever*, and *bobrauschenbergamerica*. Additionally she has toured with *Room*, *Bob*, *War of the Worlds*, *War of the Worlds – The Radio Play*, and *Cabin Pressure* to theaters including: Actors Theater of Louisville, ATL's Humana Festival of New American Plays, the Wexner Center for the Arts, Performing Arts Chicago, Stamford Center for the Arts, UCLA, Krannert Performing Arts Center, On the Boards, the Edison Theater in St. Louis, the B.I.T.E Festival, London, and the Israel Festival, Jerusalem. In addition to work with SITI Company, Elizabeth spent two summers working with the O'Neill Playwrights Conference as Production Stage Manager. In New York, she has worked on the Broadway productions of *Dirty Blonde*, *Bells are Ringing*, and *Getting and Spending*, as well as *Kit Marlowe* and *In the Blood* at The Public, *Avow* at the Century Center, *Lydie*

Breeze and *What You Get and What You Expect* with New York Theatre Workshop, *Dream True* and *Mercy* at the Vineyard, and *Red* and *The Memory of Water* at Manhattan Theatre Company.

Brian H. Scott (*Set and Lighting Associate Designer*) is a SITI Company member and has designed lighting for *bobrauschenbergamerica*, and *War of the Worlds—The Radio Play*. Additionally, he recreates designs originated by Mimi Jordan Sherin and Christopher Akerlind for company productions presented nationally and internationally. Most recently he designed light for *Marina: A Captive Spirit* with American Opera Projects; *Twisted Olivia* with members of the Ridiculous Theatre Company; *Showpeople* with Anne Bogart at Exit ART; *Death of a Salesman* in Baton Rouge, L.A. As a Company Member/Collaborator he has designed *How Late It Was How Late* (Production Design); *Requiem for Tesla*; *El Parasio*; *Big Love* and *Lipstick Traces* with Austin Theatre Company, the Rude Mechs. Other recent projects include the design for *Gertrude and Alice* in London for the Foundry Theatre directed by Anne Bogart, the design for *La Femme de Chambre* in Paris with Banal Molotov and the design for *Trojan Women* at Williamsburgh College directed by Will Bond.

Megan Wanlass Szalla (*Managing Director, SITI Company*) has been a SITI Company member since 1995. Megan was the company stage manager for five years prior to becoming SITI's Managing Director. She began working with Anne Bogart during *The Adding Machine* at Actors Theatre of Louisville. She has an Arts Administration Certificate from New York University, attended the Executive Program for Non-Profit Leaders at Stanford University Business School and was a member of the Arts Leadership Institute Charter Class at Teachers College, Columbia University. Megan is currently on the board of an arts and entertainment alumni organization for her alma mater, Occidental College.

Alexandra Urbanowski (*Managing Director, San Jose Repertory Theatre*) has been Managing Director of San Jose Repertory Theatre since 1992. In that capacity she leads the Rep in partnership with Artistic Director Timothy Near. During Ms. Urbanowski's tenure, the Rep has significantly expanded its operations and has grown into a leading cultural institution in the Bay Area. Prior to becoming Managing Director she served as Business Manager and General Manager of the Rep, having joined the Rep staff in 1986. She is a member of American Leadership Forum Silicon Valley, San Jose Leadership Council, Rotary Club of San Jose, the San Jose Arts Roundtable and is on the board of the San Jose Convention and Visitors Bureau. She received the 2001 Community Leadership Alumni Award from the San Jose Chamber of Commerce and was honored by the YWCA with a 2002 Tribute to Women & Industry Award. Ms. Urbanowski is a graduate of Smith College in Massachusetts and is an alumna of Harvard Business School's Executive Education Program.

Timothy Near (*Artistic Director, San Jose Repertory Theatre*) is in her sixteenth season as Artistic Director of San Jose Rep. Her many directing credits at the Rep include *Wintertime*, *The Odd Couple*, *'ART'*, *By the Bog of Cats...*, *Amy's View*, *Legacy*, *Three Days of Rain*, *Thunder Knocking on the Door*, *Wallflowering*, *Miss Julie*, *Mirandolina*, *The Caretaker*, *The Baby Dance*, *The Little Foxes*, *The 1940's Radio Hour* and *The Sea Gull*. She has directed at numerous theaters around the U.S. including the Guthrie Theater, Berkeley Repertory Theatre, La Jolla Playhouse, Alliance Theatre Company (Atlanta), the Mark Taper Forum (Los Angeles), Tiffany Theater (Los Angeles), Ford's Theatre (Washington, D.C.), Repertory Theatre of St. Louis, Cincinnati Playhouse in the Park, Union Square Theater (New York), New York Shakespeare Festival and A Contemporary Theatre (Seattle). She has received Drama-Logue Awards for her direction of *Ghosts on Fire* at La Jolla Playhouse, *Fire in the Rain...Singer in the Storm* at the Mark Taper

Forum and *Thunder Knocking on the Door*. She is a native of Northern California and a graduate of San Francisco State University and the London Academy of Music and Dramatic Art. Under Ms. Near's leadership, the Rep has produced seven World Premieres, eight American premieres, 28 West Coast premieres and created the New America Playwrights Festival. She contributed significant leadership as well as artistic and technical guidance to the design and building of San Jose Rep's new theater. Ms. Near is a recipient of the Woman of Achievement in the Arts Award, given by the San Jose Mercury News and The Women's Fund. San Jose Magazine included Ms. Near in the Top 100 list of Influential People in Silicon Valley in April 2001, 2002 and 2003.

SITI Company, in its second decade of activity, began as an agreement between Tadashi Suzuki and Anne Bogart to establish a new venture in the United States that would emphasize international cultural exchange and collaboration. SITI believes in a commitment to the power of the theater as a source of spiritual strength in the contemporary global environment. Originally envisioned as a summer institute in Saratoga Springs, NY, SITI grew quickly into a year-round theater company based in New York City with an office and studio. Saratoga Springs is now SITI's summer home.

An ensemble-based theater company, SITI exemplifies the disciplines it practices and the artistic values it develops in its work. The company's mission is to create new works for the theater, to perform and tour these productions nationally and internationally, to provide ongoing training for young theater professionals in an approach to acting that forges unique and highly disciplined artists for the theater, and to foster opportunities for cultural exchange with theater professionals and audiences from all over the world.

In addition to Artistic Director Anne Bogart, SITI Company is comprised of ten actors, five designers, a playwright, stage manager, development director and managing director. The company represents a change in thinking about the relationships between artists and institu-

tions. One way SITI is accomplishing its mission is by integrating into other organizations of the existing American and international theater systems. Examples include our ongoing relationships with Wexner Center for the Arts; Actors Theatre of Louisville; the Walker Art Center; Performing Arts Chicago; On the Boards; Magic Theatre; Krannert Center; Miami Light Project; Theater Emory; Classic Stage Company and the Brooklyn Academy of Music. SITI affiliations with universities include New York University; The Juilliard School; Columbia University; The Ohio State University; Miami University; University of Minnesota; University of Louisville; Ohio University; Utah State University; Emory University and St. Edward's University. Every June the Company continues to gather for our annual Summer Intensive at Skidmore College in Saratoga Springs. Internationally, SITI has performed and led training in Japan, Germany, France, the Czech Republic, Wales, the Georgian Republic, Ireland, Turkey, Italy, Australia, Canada, Colombia, Scotland, England, Israel, Denmark and Holland.

Recently SITI premiered Marivaux's *La Dispute* at the American Repertory Theatre in Cambridge and *Nicholas & Alexandra* at Los Angeles Opera. Other SITI productions include: *Orestes*; *The Medium*; *Small Lives/Big Dreams*; *Going, Going, Gone*; *Miss Julie*; *Culture of Desire*; *Bob*; *Private Lives*; *Alice's Adventures*; *Cabin Pressure*; *War of the Worlds*; *Room*; *bob-rauschenbergamerica*; *Hay Fever* and *Score*. Future productions include: *systems/layers* (a collaboration with music group Rachel's); *Death and the Ploughman*; and *Reunion*.

SITI Company is: Akiko Aizawa, J. Ed Araiza, Anne Bogart, Will Bond, Susan Hightower, Leon Ingulsrud, Ellen Lauren, Kelly Maurer, Charles L. Mee, Jr., Elizabeth Moreau, Tom Nelis, Barney O'Hanlon, Neil Patel, James Schuette, Brian Scott, Mimi Jordan Sherin, Megan Wanlass Szalla, Stephen Webber and Darron L West.

SITI Company Board of Directors: Matthew Bregman, Lynn Cohen, Ron Cohen, Barbara Olsen Cummings, Jim Cummings, Lauren Flanigan, Nicole Borrelli Hearn, Cherry Jones, Thomas Mallon, Mary O'Connor, Daniel C. Smith, John Wessel, and Jaan Whitehead (Board Chair)

SITI Company Associates: Shawn Fagan, Jeffrey Fracé, Christopher Healy, Mark Huang, Kurt Kellenberger, and Donnie Mather.

Consultants: Ellen Pearre Cason, Accountant; Brenda Dickey, Travel Agent; James Harley, Graphic Designer; Thomas Mallon, Attorney; Kay Mitchell, Development; David Herrick, Public Relations.

San Francisco Training Intensive with SITI Company, May 2004, hosted by foolsFURY Theater Company. Courses will be offered in Viewpoints and Suzuki techniques at both introductory and intermediate levels, as will a course in Composition. For more information check the website at www.foolsfury.org, or call 1 866 GOT-FURY (468-3879).

For further details about any of SITI's productions or training programs, please feel free to contact us at:

520 8th Avenue, 3rd Floor, Suite #310
New York, NY 10018
212.868.0860 tel 212.868.0837 fax
inbox@siti.org www.siti.org

SITI Company is deeply grateful to the generous donors who are listed below:

SITI Circle: \$10,000 +

Andrew W. Mellon Foundation
Carnegie Corporation of New York
Jeanne Donovan Fisher and Richard B. Fisher
National Endowment for the Arts
New York State Council on the Arts
Joan H. and Robert Parker
Shubert Foundation
Jaan Whitehead

SITI Patrons: \$5,000 - \$9,999

Altria, Inc.
Fan Fox and Leslie R. Samuels Foundation
Lucille Lortel Foundation, Inc.

SITI Benefactors: \$1,000 - \$4,999

Anonymous
Carolyn Anderson and Wilma Hall
Disney Worldwide
JKW Foundation
Cherry Jones and Mary T. O'Connor

C A S T P r o f i l e cont.

Joanne Cregg Smith and Daniel C. Smith
Mitchel R. McElya
Pioneer Ridge Entertainment, Ltd.

SITI Sponsors: \$250 - \$999

Carl Asakawa
Ronald T. Cohen and Lynn Cohen
Barbara Olsen Cummings and Jim Cummings
Bruce Ferguson
Britton Fisher
Kraus Family Foundation
Thomas Mallon
Tom Miller
Ward and Lucy Mooney
Jerry Stiller and Anne Meara
Phyllis and Ira Wender
John Wessel

Friends of SITl: up to \$250

Lois Ahrens
Francesca Mantani Arkus
Judith E. and Joseph Auerbach
Frederic Barbour
Paul Beirne
Mary T. Blanchette and Serge R. Blanchette
Anne Bogart
Nicole Borrelli Hearn
Stephanie E. Branick
Helen Brawn
Matthew L. Bregman and
Caryn Binder Bregman
Julie Anne Caffey
Cason and Company
Nick Corley
Scott T. Cummings
Allen Davis
Bonnie Eckard
Julieanne Ehre and Hans Detweiler
Dr. Katie Embree
Susan Gallin
David R. Gammons
Victoria and Matthias Gohl
Michael Greif
Todd Griffin
Jessica Grossman-Caridi
Anne Hamburger and Ralph Jenney
Linda Hammel
Joan M. Hanlon
Joanna Helming

Rebecca M. Herman
Jeffrey J. Hill
Amy Hughes
Natsu Ifill
Christina M. Jones
Bahar Kerimoglu
Jean Gee Hing Kwok
Rachel Kranz
Eliza Ladd
Ellen Lauren
Sharon Leahy and Richard P. Good
Molly M. Lewis
Alison Dana Lonshein
Marc Masterson and Patricia A. Melvin
Janet Maslin
George WM. Mayer, Jr.
Tom Miller
Carol Y. Mitchell
Elizabeth Moreau
Phillip D. Owen
Mindy Pfeffer
John Ruocco and Haydee Ruocco
Larry Sacharow
Ted and Adele Shark
Lucy Smith
Molly Smith
Ted Sperling
Sherry E. Teitelbaum
Justin Townsend
Calvin Trillin
Lorna Wanlass
David A. Warner
Leslie Waters and Carol A. Smart
Stanley Watkins
Stephen Webber
Steve and Carol Wing
Lindy Zesch
Paul Zimet

To become a contributor to SITl Company,
please call the SITl office for further informa-
tion at 212.868.0860.

All donations listed in this program include
gifts and pledges received through 12/19/2003.

SAN JOSE REPERTORY THEATRE DONORS

CENTURY FUND

The following donors have made a major gift in support of the establishment of permanent resources for the Rep. We are grateful for their vision and leadership.

Anonymous
Greg and Anne Avis
Lisa Blasé
Rich and Sally Braugh
Robert L. Caret and Elizabeth Zoltan
John and Betty Colwell
Sarita and Fred Frederick
William Randolph Hearst Foundation
Valerie and John Hopkins
Knight Ridder
Elaine and Harvey Knoernschild
Maggie and Robert Leach
Lockheed Martin
Maximum Strategy, Inc.
Nadine and Mark Priestley
Carol Sands
Bill and Carol Smythe
John Michael and Abby Sobrato
Sharon Wong and Lee Poel

CORPORATE COUNCIL

All Corporate Council members support the Rep at a level of \$2,500 or more annually.

ABD Insurance
Adaptec, Inc.
Air Systems Foundation, Inc.
Alhambra National Water Co.
Almaden Press
Applied Materials, Inc.
Argus Financial Corporation
AT&T
Barbaccia Properties
Berliner Cohen
Bloom & Co. Salon
California Casualty Group
Calpine Corporation
Capitol Buick/Pontiac/GMC
Citigroup Foundation
Comerica Bank
Crowne Plaza
Cupertino National Bank/
Greater Bay Bancorp
Deluxe Corporation
Devcon Construction, Inc.
Divco West
Equity Office
Fairmont Hotel
Frank Rimerman Company
HAWGS Seafood Bar
Heritage Bank of Commerce
Hitachi Data Systems
Hilton San Jose & Towers

Hopkins & Carley
Hotel De Anza
HP
Hyatt Sainte Claire
IMPAC Medical Systems, Inc.
Jack R. Blackwell, Inc.
Knight Ridder
KPMG LLP
Lockheed Martin
McGrane, Greenfield, Hannon
& Harrington LLP
The Mercury News
Morely Hunter Group, Inc.
Pacific Gas and Electric
Pacific Hotels
Perisho, Tombor, Loomis & Ramirez
Print It
PricewaterhouseCoopers LLP
SanDisk Corporation
Santana Row
Scitor Corporation
Scott's Seafood
Silicon Valley Business Ink
Silicon Valley Capital Club
Silicon Valley Community Newspaper
Silicon Valley/San Jose Business Journal
Sobrato Development Companies
Stratta Grill and Bar
Target Stores
Thomas Weisel Partners
UBS
Union Bank of California
United Defense LP
USE Credit Union
Verizon Superpages
Wells Fargo Foundation
The Yahoo! Employee Foundation

CORPORATE DONORS

The following names represent contributions made to the corporate fund in the last 12 months, as of 12/12/03.

SPONSOR

(\$20,000 AND ABOVE)
Applied Materials, Inc.
Comerica Bank
Equity Office
Hitachi Data Systems
HP
IMPAC Medical Systems, Inc.
Knight Ridder
Lockheed Martin

CO-SPONSOR

(\$10,000-\$19,999)
Adaptec, Inc.
Calpine Corporation
Capitol Buick/Pontiac/GMC
Hopkins & Carley

The Mercury News
Perisho, Tombor, Loomis & Ramirez
PricewaterhouseCoopers LLP
Regent Pacific Management Corporation
Silicon Valley Business Ink
Silicon Valley Capital Club
Silicon Valley/San Jose Business Journal
Sobrato Development Companies
UBS
Verizon Superpages

PARTICIPATING SPONSOR

(\$5,000-\$9,999)
Air Systems Foundation, Inc.
AT&T
Barbaccia Properties
Bloom & Co. Salon
California Casualty Group
Citigroup Foundation
Crowne Plaza
Divco West
HAWGS Seafood Bar
Hyatt Sainte Claire
Jack R. Blackwell, Inc.
Pacific Hotels
SanDisk Corporation
Santana Row
Silicon Valley Community Newspapers
Thomas Weisel Partners
United Defense LP
USE Credit Union
Wells Fargo Foundation
The Yahoo! Employee Foundation

PRESIDENT'S CIRCLE

(\$2,500-\$4,999)
ABD Insurance
Alhambra National Water Co.
Almaden Press
Argus Financial Corporation
Berliner Cohen
Cupertino National Bank/
Greater Bay Bancorp
Deluxe Corporation
Devcon Construction, Inc.
Frank Rimerman & Company
Heritage Bank of Commerce
Hilton San Jose & Towers
Hotel DeAnza
KPMG LLP
McGrane, Greenfield, Hannon
& Harrington LLP
Morely Hunter Group, Inc.
Pacific Gas and Electric Company
Scitor Corporation
Stratta Grill and Bar
Target Stores
Union Bank of California
The Wall Street Journal

DIRECTOR'S CIRCLE

(\$1,000-\$2,499)

American Airlines
Bell Capital Management, Inc.
Hammer & Jacobs
Kier & Wright Civil Engineers
LifeScan Incorporated
Mayer Moll and Associates
Melchor Corporation
Print It
Rotary Club of San Jose
Silicon Valley Bank Foundation
Smith Companies Dental Products
Sony Electronics

BENEFACTOR'S CIRCLE

(\$500-999)

Flick Enterprises
The Schoennauer Group

PATRON'S CIRCLE

(\$100-\$499)

Carpenter & Mayfield
Economy Lumber Company
Hawkins Blick
Mediation Masters
Ruby & Schofield
Russell's Furniture
Southwest Airlines

FOUNDATIONS

(\$100,000 AND ABOVE)

The James Irvine Foundation
The William and Flora Hewlett Foundation
(\$50,000-\$99,000)
John S. and James L. Knight Foundation
(\$25,000-\$49,999)
Community Foundation Silicon Valley
Dave House Family Foundation
The David and Lucile Packard Foundation
Myra Reinhard Family Foundation
The Shubert Foundation
Sobrato Family Foundation
(\$10,000-\$24,999)
Cisco Foundation
Compton Foundation
Fleishhacker Foundation
Kieve Foundation
MetLife Foundation
The Sharks Foundation
(\$5,000-\$9,999)
The Marr Family Charitable Foundation
VanLobenSels/RembeRock Foundation
(\$1,000-\$4,999)
William H. Cilker Family Foundation

GOVERNMENT

(\$100,000 and above)

Arts Commission, City of San José
(\$10,000-\$99,999)
California Arts Council
City of San Jose HNVF Program
National Endowment for the Arts

INDIVIDUALS

SECOND ACT LEGACY SOCIETY

The Rep gratefully acknowledges the following individuals for their extraordinary generosity demonstrated by gifts made through their respective estate plans.

Tish and John Bayer
Caroline H. Crummey
Mrs. Paul L. Davies
Larry and Aileene Edsinger
Karen J. Miller
Clinton and Sharon Snyder
William Zoller
Arthur and Kathy Zwern

The following names represent contributions made to the annual fund in the last 12 months, as of 12/11/03.

PRODUCER'S CIRCLE

(\$10,000 AND ABOVE)

Anonymous
Greg and Anne Avis
Maribeth Benham
Rich and Sally Braugh
Jay and Susan Hoey
The Leach Family Foundation
Maverick Foundation
Jeffrey and Sally Moore
Perry and Lynne Olson
Sam and Patricia Prather
Gary J. Sbona
John Michael and Abby Sobrato
Jane Walker

PLAYWRIGHT'S CIRCLE

Anonymous
Donna and James Blair
Virginia and Michael Bowman
Carl and Sharron Cookson
Dana and Elaine Dittmore
Linda and Stephen Eckstone
Edward and Renee Fields
Michael and Mary Ellen Fox
Sarita and Fred Frederick
Nancy H. Handel
Hawes Family Fund

Thomas and Jill McEnery
Doug and Shawn Mackenzie
Robert and Mary Miller
Sandra Moll and Richard Holden
John and Shannon Petersen
Jackie and Barry Posner
J.B. and Paff Wood

PRESIDENT'S CIRCLE

(\$2,500 to \$4,999)

Anonymous
Tom and Ann Atkinson
Lisa E. Blasé
Eric and Kristy Brandenburg
James and Treacy Eller
The Graham Family
Philip and Susan Hammer
William and Ida Highlander
John and Valerie Hopkins
Joseph and Joele Horowitz
Nicki Nicol Huber
Michael and Frannie Hall Kieschnick
Jennifer Konecny
John and Claudia Mann
J.P. and Katie Mark
Frank and Judith Marshall
Mary Kay and Cloyd Marvin
Melanie McNulty
Thomas and Gillian Moran
Kathryn Murray
Gerry and Carol Parker
Nadine and Mark Priestley
Robert and Christine Redford
James L. Sammet
Carol Sands
Ajay Shah and Lata Krishnan
Cyndi Sherman and Stephen Schleimer
Fred and Olena Snow
Vijay and Sheena Vaidyanathan
Vern and Carol Watts
Sharon Wong and Lee Poel
Chris and Kim Worrall

DIRECTOR'S CIRCLE

(\$1,000-\$2,499)

Anonymous
Barry and Jo Ariko
Martha E. Alderson
Donald and Nancy Avoy
Dick and Louise Barr
Dean and Judy Bartee
Ted and Nancy Becker
Jeff and Cathy Black
Judith and Ken Blasé
Rita L. Boren
Elizabeth C. Brierly
Marianne and Alden Briscoe
Tim and Mary Carl
Steven and Karin Chase
Art and Carol Courville
Alden and Ann Danner
Jeannie Duisenberg

Dale Fanetti
 Farrington Historical Foundation
 Margaret and Donald Fidler
 Harold and Donna Fontaine
 Mary Beth Gay and Arthur Feather
 Laura and John Foster
 Catharine and Dan Garber
 Robert Garner
 Dick and Mary Jo Garrett
 Janice and Mel Goertz
 Don and Ann Gralnek
 Audrey and David Haines
 Jim and Arlene Harper
 Richard Harris
 Kathleen and Gary Heidenreich
 David and Cheryl Heiman
 Bruce and Eleanor Heister
 Marcia Hirtenstein and Ray Wallin
 Deke and Lori Hunter
 Alfred and Marjorie Hurwitz
 Sylvia and Jim Katzman
 Judy Keeley
 Victoria and Steven Kellogg
 Elaine and Harvey Knoernschild
 Edward and Valerie Lozowicki
 Nora Mason
 Steve Mink and Juanita Mah
 David and Leslie Moreland
 J.C. Motta
 David Nakamura
 Margaret and Kapil Nanda
 Michael and Alyce Parsons
 Joan Perry and Ron Lykins
 Ellen Prandi
 Lynn and George Rossmann
 Dan Rubnitz and
 Deborah Meltzer Rubnitz
 Harry and Carol Saal
 Scott Sagan and Sujitpan Bao Lamsam
 Clive Schlieve and Vickie Blakeslee
 Matt Sorgenfrei and Vangi Uribe
 Sy and JoAnn Syvertson
 Kam and Dodie Tabari
 Dan and Liz Taylor
 Nicholas R. Trueblood
 Alexandra Urbanowski
 John and Claudia Unger
 Gary and Barbara Vandeweghe
 Mark and Jeri Waxman
 Arthur and Kathy Zwern

ACTOR'S CIRCLE

(\$500-\$999)

Anonymous
 William and Marsha Adler
 Don and Sally Allen
 Joyce Avery
 Terry and Carol Austen
 Ken and Ellyn Bloomfield
 James and Margaret Brady
 Steve and Trish Brock
 JoAnne Brown
 Carole Buffum and Kenneth Davis

Alyssa Byrkit and Shawn Davis
 Elaine and Rex Cardinale
 Eric and Mimi Carlson
 Gregory Cheung, M.D.
 Nancy Coleman and Paul Resch
 Mitchell Day
 Jane H. Decker
 Dale Elliot and Christine Mengarelli
 Clayton and Sandy Feldman
 Robert and Joyce Filpi
 Joseph and Armeda Fischer
 Martin and Barbara Fishman
 Robert and Diane Gingell
 Ann Hansen
 Kenneth and Janet Gray Hayes
 Tim and Mary Healy
 Keith and Martha Hull
 Margaret M. Jewett
 Russel Johnson
 Dan and Robin Klenke
 Edwin Kinderman
 Lin and Carol Krebs
 Daniel and Mary Ellen Lazare
 Max and Carolyn Lettween
 Ray and Maxine Lubow
 Phil and Kelly Mahoney
 Dan and Chris McDonald
 Lois D. McDonald
 Terrence and Cynthia McMahon
 Tom Mac Rostie
 Lyle Merithew and
 Eileen Sandy Swirsky
 Jon and Linda Michaelson
 Thomas and Karen J. Miller Westcott
 Bill and Sylvia Moore
 Jeffrey and Kimberley Moore
 Claire Noonan
 James and Jeannie Ottinger
 Bradford and Virginia Parkinson
 Gary and Kitty Petersmeyer
 John Price and Judy Gillette
 Joel and Andrea Rubnitz
 James Rumbaugh and
 Madeline Morrow
 Steve Saperstein
 Steve Schroeder
 Ted and Dana Schroeder
 Karen and Bill Shannon
 Stan Skelton
 Tom Snell and Sarabelle Hitchner
 Lee and Norelle Tavrow
 Ron Weston
 Gregory Wetzell
 Nancy A. Wheeler
 John and Kathy Wyss
 Kenneth Zarembo and Susan Kamprath

ANGEL

(\$250-\$499)

Anonymous
 Raymond and Carol Bacchetti
 Eli and Phyllis Bail
 Tish and John Bayer

Robert A. Baylor
 Douglas and Martha Beattie
 Sandra Belanger
 Gretchen O. Bell
 Mike and Jan Bergkamp
 Tom and Karen Bertrand
 Robert E. and Adele Boydston
 Francis and Jean Brandt
 David Caldwell and Helen Moritz
 Judy Cosgrove
 Malkah W. Carothers
 Park and Joan Chamberlain
 Rowland and Dawn Chase
 Donna and Jerry Cooper
 Victor and Joan Corsiglia
 Matthew and Michelle Crosby
 Genevieve C. Dames
 William R. Danielson
 Arnold and Laura de Leon
 Steve Dowler and Gale Marinelli
 David and Jane Duperrault
 James and Diane Endo
 Colette Farabaugh
 Dan and Denise Fenton
 Linda and Dick Fish
 Neil and Marion Flaherty
 John and Dolores Fleming
 Robert and Cathy Gale
 Diane Goldman and David Singer
 Daniel and Veronica Gross
 Mike and Kathy Gutto
 Adele Haeussler
 Jim and Linda Hagan
 Brett Hasselbring and
 Mary Ann Lauderdale
 Paul and Gina Hein
 Jane Hiatt and Robert Pearl
 Carolyn Hyatt
 Bruce and Jill Hyman
 Mikio and Vickie Ishimaru
 Mike and G. Jean Ivanitsky
 Jerome and Rita Rae Jacobson
 William Jamaca
 Larry and Claire Jinks
 Allen and Darlyn Johnson
 Derk and Mary Johnson
 Frank and Marjorie Johnson
 Rina Katzen
 James Kern and Monica Donovan
 Robert S. Kieve
 Edward and Eleanor Kiss
 Steve Kottmeier and Suanne Ramar
 Steven and Martha Krow-Lucal
 Lee and Jiri Kucera
 Frank and Jan La Fetra
 Marlene and Larry Laidlaw
 John La Porta
 Clare and Kenneth Livak
 Bruce A. Locke and Mary Hammond
 John and Gail Long
 Peter and Elaine Long
 Carol C. Luckhardt
 Christopher and Beth Martin
 Richard and Jacqueline Mayer

D O N O R S cont.

Roger and Karen Miller
 Barry and Carol McCarthy
 Richard and Junetta McKewen
 Barry and Rosemarie Mirkin
 Lee and Julie Moncton
 Diana Morabito and Keith Ball
 Amelia Moseley
 Matthew and Monique Mulbry
 Ed and Kathy Munoz
 Linda Myers
 James Nelson
 Barbara Nichols
 Kenneth and Marjorie Nissly
 Bourée and Michael Nordin
 Glen and Marcia Pensinger
 Willis D. Perkins
 Morgan Rankin
 Mary L. Reber
 Joseph Roberts
 Cherie and Gerald Rosenquist
 San Jose Leadership Academy
 Robert Sanders
 James and Sharon Seale
 Ken Seylar
 Laura and Alex Shumay
 Stuart and Terry Silverman
 California State Assembly-
 member Joe Simitian
 Earl and Marietta Singer
 Mark Singleton and Judy Jeter
 Donald Slama
 Charles and Claudia Slayman
 Russell and Laura Smith
 J. Stanfield
 Robert and Dorothy Swan
 Edward and June Tablak
 Geoff and Colleen Tate

Jeff and Catherine Thermond
 Andrea and Joe Thomas
 Steven Tryon
 Todd and Carolyn Tuomala
 Shawn Underwood
 Fred and Ridley Virdeh
 Volunteer Center Silicon Valley
 Patrick Waite
 Robert and Diana Weinmann
 Per-Erik and
 Judith Wells-Walburg
 Nathan and Carolyn Wilson
 Richard and Karen Wiley

Don't Forget to Match!

Would you like to double your generous contribution to the Rep?
 Consider a Matching Gift! Many Silicon Valley employers match monetary donations or even contributions of volunteer time made by their employees to a favorite non-profit.

Here is how it works: Contact the personnel department of your company (or if you are retired, your previous employer) to see if they match charitable contributions; some match .5:1, some 1:1, and some even 2:1!

They will give you a form to complete and send to the Rep along with your gift. Once the Development Department receives these items, we will add our information and return the form to your employer who will then match your donation. It is that simple to see your contribution go twice as far. If you have any questions, please contact **Bourée Nordin** at **408.367.7259**. Here are just a few local companies who have already been great contributors: Adobe Systems, Cisco, IBM and Sun Microsystems. •

BOARD OF TRUSTEES 2003~2004

Chris Worrall
 President

Greg Avis
 Vice President for Nominating
 & Board Development

Philip Hammer
 Vice President for Long Range Planning

Jay P. Hoey
 Vice President for Audience Development

Mary Kay Marvin
 Vice President of Fund Development

Stephen D. Eckstone
 Artistic Advocacy & Education Chair

John Petersen
 Treasurer

Nadine Wiley Priestley
 Secretary

Sharon Wong
 Board Counsel

Lisa Blasé
J. Richard Braugh
Jeannie Duisenberg
James J. Eller
Edward Fields
Sarita Johnson Frederick
Don Gralnek
R. William Highlander
Joyce Hsu
Nicki Nicol Huber
Elaine Knoernschild
Lata Krishnan
Nora Mason
Melanie L. McNulty
Gillian Moran
Kathryn G. Murray
Perry Olson
Barry Z. Posner
Sam Prather
Rob Redford
Steve Rossi
Carol Sands
John Michael Sobrato
Jim Stephens
Jane Graham Walker
J.B. Wood

James P. Reber
 Founder

S T A F F

EXECUTIVE

Artistic Director

Timothy Near

Managing Director

Alexandra Urbanowski

ARTISTIC

Associate Artistic Director

John McCluggage

Artistic Associate/

Casting Director

Bruce Elsparger

Education and Outreach
Programs Manager

Karen Atree Piemme

Acting Instructors

Karen Atree Piemme

Billie Shepard

Creative Playshop Leaders

Iain Campbell

Renee Cunha

Literary Intern

Adina Kletter

ADMINISTRATION

Director of Administration
and Finance

Elis Imboden

Administration Office Manager

Kelly Schneider

Executive Coordinator

Deanna Lee

Business and Office Coordinator

Diane Tran

PLAYWRIGHTS IN COMMISSION

Craig Bohmler

Mary Bracken Phillips

Steven Dietz

RED LADDER THEATRE COMPANY

Director

John McCluggage

Associate Director

Karen Atree Piemme

Company Members

Boni B. Alvarez

Jamie Blanch

David Joe Cavallero

Thomas P. Gallahan

Darcie Lee Grover

Carolina Rojas Moretti

Victoria Ramirez

Brian Stevens

SITI COMPANY

Artistic Director

Anne Bogart

Associate Artistic Director

Ellen Lauren

Managing Director

Megan Wanlass

Szalla

Development Director

Maureen Towey

Company Stage Manager

Elizabeth Moreau

Interns

Julie Kline

Barbara Lanciers

Maria Goyanes

Lisa Mercer

Kirsty Miller

DEVELOPMENT

Director of Development

Alyssa Byrkit

Associate Director
of Development

Catherine Derringer

Grants Manager

Kathy Gutto

Annual Fund Manager

Bourée Nordin

AUDIENCE SERVICES

Audience Services Director

Renee Cunha

Subscriptions Coordinator

Patrice Lakey

Shift Supervisor

Ben Daniels

Audience Services Agents

Laura Bennington

Ivan Jakic

Johnny Lopes

Ricky Marshall

La'Dettra Williams

Stephanie Willis

RETAIL & CONCESSIONS

Retail Operations Manager

Sharron Lopez

Concession Associates

Pamela De Martini

Ivan Jakic

Nathaniel Nava

Cecelia Caraveo

HOUSE MANAGEMENT

House Mgr/Volunteer Coordinator

Michael Mulhern

Assistant House Managers

Laura Bennington

Ben Daniels

Nicole Daryanani

Janice Oeming

MARKETING

Director of Marketing

Butch Coyne

Marketing Manager

Cynthia Shaw

Sales Manager

Ruth Pangilinan

Inside Sales Supervisor

Christian Mauri

Inside Sales

Stephanie Taylor

PUBLIC RELATIONS

Media Relations Manager

Jeffrey Weiser

FACILITIES

Facilities Manager

Iain Campbell

Custodian for
Maintenance/Janitorial

Ernesto Fliker

Evening Custodian

Dawn French

PRODUCTION

Production Manager

Nick Nichols

Associate Production Manager

Iain Campbell

Technical Director

Erik Bolling

Associate Technical Director

Christopher Morris

Production Stage Manager

Jenny R. Friend

Company Manager

Lisa Mitchell

Assistant Stage Manager

Nicole Olson

Shop Foreman

Gregg Carlson

Stage Operations Supervisor

Chris French

Carpenters

Kaytea Petro

Ben Pfahlert

Scenic Charge

Ching-Yi Wei

Costume Shop Manager

Deborah Weber

Krahenbuhl

Wardrobe Supervisor

Eileen Clancy

Cutter/Tailor

Ginny Miller

Stitchers

Norman Jean McGee

Elizaveta Terekhin

Carol Young

Wigmaster

Sharon Ridge

Costume Shop Intern

Ryoko Nedishi

Properties Manager

Lori Scheper

Properties Artisans

Christopher Kesel

Laird Rickard

Resident Sound Designer/Engineer

Jeff Mockus

Associate Sound
Designer/Engineer

Steve Schoenbeck

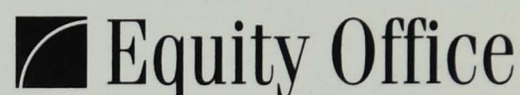
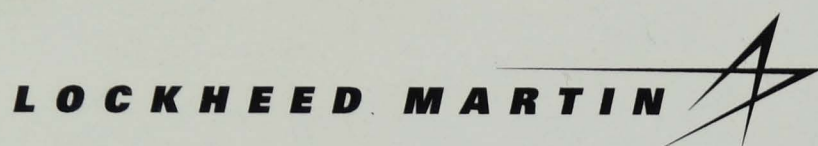
Master Electrician/
Light Board Operator

Selina Young

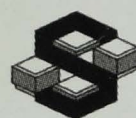
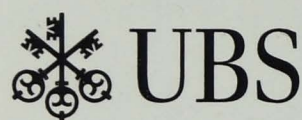
SPONSORS



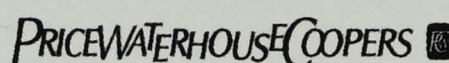
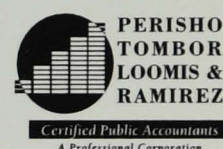
APPLIED MATERIALS®



CO-SPONSORS



SOBRATO
| DEVELOPMENT COMPANIES



PARTICIPATING SPONSORS

AT&T

Air Systems Foundation, Inc.

Barbaccia Properties

Bloom & Co. Salon

Citigroup Foundation

Divco West

HAWGS Seafood Bar

Hyatt Sainte Claire

Jack R. Blackwell, Inc.

SanDisk Corporation

Santana Row

Silicon Valley
Community Newspapers

Stratta Grill and Bar

United Defense LP

Thomas Weisel Partners

The Yahoo!

Employee Foundation

Coming Next



PHOTO ILLUSTRATION MEL LINDSTROM PHOTOGRAPHY

ROUNDING *Third*

MARCH 20 ~ APRIL 18, 2004

BY RICHARD DRESSER DIRECTED BY JOHN McCLUGGAGE

Just in time for baseball season comes this winning comedy about the high stakes world of Little League coaching. Don is a win-at-all-costs coach whose son is the star pitcher. The new assistant coach, whose son is the kid who never gets picked, thinks the point of the game is for everyone to have fun. Their clash of styles and wills makes *Rounding Third* a humorous, heartfelt and insightful look at fatherhood and sports, and a home run for anyone who's ever played, coached or watched a Little League game.

Now Available! Call 408. 367.7255

Buy on-line at www.sjrep.com

Season subject to change.



SAN JOSE
REPERTORY THEATRE

Box Office 101 Paseo de San Antonio
San Jose, CA 95113