



HUMANA FESTIVAL OF NEW AMERICAN PLAYS

26th Annual

Made possible by a generous grant from



actors

actors theatre of louisville



**TURNING
RISK INTO
REWARD**

**BEFORE ANNA
PAVLOVA'S FIRST
PIROUETTE.**

If you value the wisdom of age, of history, of experience, consider Hilliard Lyons to be your investment counselor. For more than 145 years Hilliard Lyons has given investors the means to achieve and exceed their financial goals. J.J.B. Hilliard, W.L. Lyons, Inc., member NYSE and SIPC.


HILLIARD LYONS
A PNC ADVISORS COMPANY

**SINCE
1854**

- 2** Board of Directors
- 4** About the Underwriter
- 5** Humana Festival
- 17** Playwrights
- 23** The Acting Company
- 31** Direction & Design
- 39** Executive Officers
- 40** Support
- 42** The Annual Fund
- 46** Services & Amenities
- 47** Acknowledgments
- 48** The Gallery at Actors
- 51** Theatre Staff

Actors Theatre is the State Theatre of Kentucky.

Cover Illustration by Chris Gall

The Actors Theatre program is produced in cooperation with *Louisville Magazine*.

For advertising information, contact *Louisville Magazine*, 502-625-0100.

MESSAGE FROM MARC MASTERSON

Now in its 26th year, the Humana Festival of New American Plays offers a complex, vibrant and richly textured portrait of our time—as seen through the eyes of the playwrights to whom the festival owes its reason for being. Over the course of the festival's notable history, writers have offered up their stories—stories that have provided us with a glimpse into who we are, and who we are becoming. This very human history is what the theatre has to offer, and its lessons and gifts are immense. But what keeps The Humana Festival vital is its ability to remain in the present—ever aware, as we all are, of the weight of the past, but always insisting on examining who we are right now.

It is with this spirit of adventure, of searching for answers and discovering new questions that we welcome a remarkable group of playwrights to this year's Humana Festival. We applaud the courage of those willing to join them on this inherently risky journey—the artists and staff who make the festival possible, and the audiences who embrace the work. And we extend our gratitude to The Humana Foundation, whose unwavering support has enabled the questioning to continue unabated for these many years. It is this web of support that allows the work to continue pushing forward, always ahead of the pack, reaching for the edge of the new frontier.

The work you will see is a collection of voices—some new to the festival, others familiar friends who are returning to speak to us in new and surprising ways. These voices are made flesh through the magic of the theatre—and we hope that the results will continue to resonate for years to come. So welcome to this moment, a moment rich in ideas, images, language and passion.

BOARD OF DIRECTORS

president
immediate past president
vice president, finance
treasurer
secretary

Bruce C. Merrick
Amanda Foard Tyler
Frederic H. Davis
Bruce K. Dudley
Sarah D. Fuller

Fran L. Berg
Turney P. Berry*
Jonathan S. Blue
Owsley Brown II
John J. Buchino, MD
Jeffrey P. Callen, MD
Greg Clark†
Kevin A. Connell
Catherine B. Cranor*
Lee Wilton Davis
Laurie Diebold
Nancy Doctor
Jeffrey C. Douglas
Philip C. Eschels*†
Robert M. Eversole
Craig D. Grant
Margaret Handmaker
Katheryn D. Higgins
Sylvia Sanders Johnston†

David A. Jones, Jr.
David Klein
Robert E. Kulp, Jr.
Carol Kulp-Shorten, MD
John R. Long
Todd P. Lowe*
Eleanor Nutt Maddox
Boyce F. Martin III
Nancy Rankin†
Lee W. Robinson
Theodore S. Rosky*†
Marsha Beck Roth*
Donna Burks Sanders
Edward P. Seigenfeld
W. Kennedy Simpson*
J. Walker Stites III
Roanne H. Victor
Caldwell R. Willig

*Executive Committee †Ex Officio

ACTORS ASSOCIATES BOARD

president
vice president
treasurer
secretary

Nancy Rankin
Barbara Nichols
Doris Jean Elder
Maggie McCarth
Becky Briley
Diane Cody
Betty Combs
Ken Curry
Larry Fleischer
George Kisslinger
Pat Koebel
Andrea Macias
Lue Peabody
Sharon Pearman
Les Stanfield
Patti Slagle

DEVELOPMENT BOARD

chairperson
president
treasurer
secretary

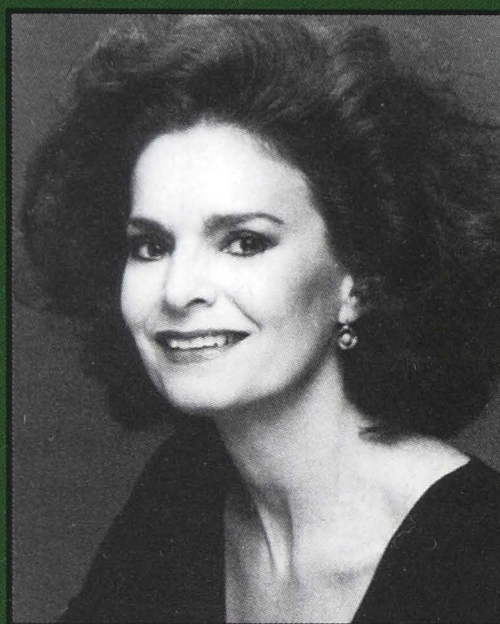
Libby Maddox
Greg Clark
Leigh-Anne Pennington
Christina Wesolowski

EXECUTIVE COMMITTEE

Gretchen Davis
Puja Gakhar
Tyson Gorman
Stewart Lussy
Jennifer Metcalf
David Minks
Andrew Murray
Alicia Nordmann
Lisa Resnik
Matt Schwartz
Melinda Simpson
Gwathmey Tyler IV
Adelaide Valentine
Karl Victor III

Stars of Our 2001 Productions

#1 in Sales



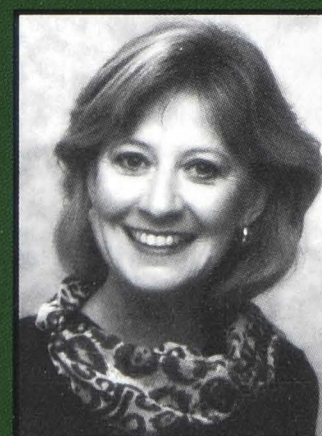
Jo Bishop

#1 in Listings

Most Units Sold



Colleen Walker



Janet Hendricks

Wakefield, Reutlinger

E-mail: wakereut@aol.com

502.425.0225

800.837.5696



ABOUT THE UNDERWRITER

In 1979 *The Elephant Man* won the Tony Award for Best Play, and the most popular movie, *Superman*, knocked out *Rocky II*, while the Mideast grabbed headlines with the Shah's departure and the Soviet arrival in Afghanistan.

It was also 23 years ago that Humana's founders, David A. Jones and the late Wendell Cherry, first decided to sponsor the New Play Festival at Actors Theatre of Louisville. Few could have predicted the illustrious theatrical history that has followed.

During this glorious 26-year run, the Festival has an unparalleled record of producing original American plays, launching exciting careers for numerous talented playwrights throughout the country. Many of the plays have won prestigious awards and others have gone on to play for movie audiences and international admirers as well.

The Humana Foundation is proud and rather overwhelmed with the success that the Actors Theatre team has accomplished through sheer daring and creativity.

Humana's leadership believes that America's arts are a precious resource benefiting every citizen. This vision is the driving force behind our support of the arts. As one of America's largest publicly traded health benefits companies, Humana Inc. and its foundation have the privilege of identifying and promoting excellence in many facets of life. Whether in domestic and international health care, education, or civic and cultural development, Humana is committed to supporting worthwhile partners and initiatives in communities we serve.

We congratulate Actors Theatre and its artistic director, Marc Masterson, and salute all the playwrights, actors, directors and audiences who will be participating in the exciting 26th year of the Humana Festival of New American Plays.



actors theatre of louisville **PRESENTS**

26th Annual Humana Festival of New American Plays

made possible by a generous grant from The Humana Foundation

THE MYSTERY OF ATTRACTION

march **03** – april **07, 2002**

by **MARLANE MEYER**

directed by **RICHARD CORLEY**

THE CAST (in order of

Ray	STEVE JUERGENS*
Warren	DAVID VAN PELT*
Denise	CLAUDIA FIELDING*
Roger	ROBERT IAN MACKENZIE*
Larry	LEE SELLARS*
Vickie	LAURA MASTERSON

Setting: Carson, California

Time: The Present

Presented by special arrangement with The Gersh Agency

Scenic Designer	PAUL OWEN
Costume Designer	CHRISTAL WEATHERLY
Lighting Designer	TONY PENNA
Sound Designer	MARTIN R. DESJARDINS
Properties Designer	MARK WALSTON
Production Stage Manager	PAUL MILLS HOLMES*
Assistant Stage Manager	LESLIE K. OBERHAUSEN*
Dramaturg	TANYA PALMER
Casting	ORPHEUS GROUP CASTING

*Member of Actors' Equity Association, the union of professional actors and stage managers of the United States

There will be no intermission.



actors theatre of louisville **PRESENTS**

26th Annual Humana Festival of New American Plays

made possible by a generous grant from The Humana Foundation

FINER NOBLE GASES

march **08** – april **06**, 2002

by **ADAM RAPP**

directed by **MICHAEL JOHN GARCÈS**

THE CAST (in order of appearance)

Staples	ROBERT BEITZEL*
Chase	DALLAS ROBERTS*
Lynch	MICHAEL SHANNON*
Speed	RAY RIZZO
Gray	JEFFREY BEAN*
Dot	ALAINA MILLS

Setting: An East Village apartment near Tomkins Square Park in New York. Winter.

Presented by special arrangement with The Joyce Ketay Agency

Scenic Designer	PAUL OWEN
Costume Designer	CHRISTAL WEATHERLY
Lighting Designer	TONY PENNA
Sound Designer	VINCENT OLIVIERI
Properties Designer	DOC MANNING
Stage Manager	CHARLES M. TURNER III*
Production Assistants	JUSTIN MCDANIEL
	ERIN TATGE
Dramaturg	AMY WEGENER
Casting	ORPHEUS GROUP CASTING

*Member of Actors' Equity Association, the union of professional actors and stage managers of the United States

There will be no intermission.



actors theatre of louisville **PRESENTS**

26th Annual Humana Festival of New American Plays

made possible by a generous grant from The Humana Foundation

Brown-Forman Wines Mainstage Series

LIMONADE TOUS LES JOURS

march **12** – april **06**, 2002

by **CHARLES L. MEE**

directed by **MARC MASTERSON**

THE CAST (in order of appearance)

Jacqueline	CHRISTA SCOTT-REED*
Andrew	TOM TETI*
Waiter	JOSH WALDEN*

Setting: Paris, in the springtime

Time: The Present

Presented by special arrangement with International Creative Management, Inc.

Scenic Designer	PAUL OWEN
Costume Designer	KATHERINE HAMPTON
Lighting Designer	TIM SATERNOW
Sound Designer	VINCENT OLIVIERI
Properties Designer	MARK WALSTON
Stage Manger	HEATHER FIELDS*
Assistant Stage Manager	DEBRA A. FREEMAN*
Music Supervisor	KIMCHERIE LLOYD
Video Designer	VALERIE SULLIVAN FUCHS
Dialect Coach	LILENE MANSELL
Dramaturg	TANYA PALMER
Casting	ORPHEUS GROUP CASTING

*Member of Actors' Equity Association, the union of professional actors and stage managers of the United States

Charles L. Mee's work is made possible by the support of Richard B. Fisher & Jeanne Donovan Fisher

There will be no intermission.



actors theatre of louisville **PRESENTS**

26th Annual Humana Festival of New American Plays

made possible by a generous grant from The Humana Foundation

a. m. **SUNDAY**

march **16** – april **07, 2002**

by **JEROME HAIRSTON**

directed by **TIMOTHY DOUGLAS**

THE CAST (in order of appearance)

Denny	H.J. ADAMS
R.P.	RAY ANTHONY THOMAS*
Helen	BARBARA GULAN*
Jay	JEREMY ALAN RICHARDS*
Lorie	TARAH FLANAGAN*

Setting: The home of R.P. & Helen. A bus stop. The Woods.

Time: a.m. Sunday to Thursday Morning. Early November.

Presented by special arrangement with Rosenstone/Wender

Assistant to the Director	RAJENDRA RAMOON MAHARAJ
Scenic Designer	PAUL OWEN
Costume Designer	CHRISTAL WEATHERLY
Lighting Designer	TONY PENNA
Sound Designer	VINCENT OLIVIERI
Properties Designer	DOC MANNING
Stage Manger	CAT DOMIANO*
Production Assistant	SARAH HODGES
Dramaturg	AMY WEGENER
Casting	ORPHEUS GROUP CASTING

*Member of Actors' Equity Association, the union of professional actors and stage managers of the United States

There will be no intermission.



actors theatre of louisville **PRESENTS**

26th Annual Humana Festival of New American Plays

made possible by a generous grant from The Humana Foundation

Brown-Forman Wines Mainstage Series

SCORE

march **21** – april **13, 2002**

conceived and directed by **ANNE BOGART**

adapted by **JOCELYN CLARKE**

created by **SITI COMPANY**

THE CAST

Performer **TOM NELIS***

Scenic Designer	NEIL PATEL
Costume Designer	JAMES SCHUETTE
Lighting Designer	CHRISTOPHER AKERLIND
Sound Designer	DARRON L. WEST
Properties Designer	MARK WALSTON
Stage Manager	ELIZABETH MOREAU*
Assistants Stage Manager	DEBRA A. FREEMAN*
Music Consultants	JEFF HALPERN & GEORGE STEEL
Dramaturg	STEPHEN MOULDS

*Member of Actors' Equity Association, the union of professional actors and stage managers of the United States

Commissioned by Actors Theatre of Louisville, The Wexner Center for the Arts at The Ohio State University with support from the Doris Duke Charitable Foundation, and SITI Company. Additional support provided by the Rockefeller/MAP Fund and the National Endowment for the Arts.

There will be no intermission.



actors theatre of louisville **PRESENTS**

26th Annual Humana Festival of New American Plays

made possible by a generous grant from The Humana Foundation

REMBRANDT'S GIFT

march **26** – april **07, 2002**

by **TINA HOWE**

directed by **JOHN RANDO**

THE CAST (in order of appearance)

Polly Shaw	PENNY FULLER*
Walter Paradise	JOSEF SOMMER*
Rembrandt	FRED MAJOR*

Setting: Walter and Polly's top floor loft in downtown Manhattan

Time: The Present

Scene One	THE MIDDLE OF THE NIGHT
Scene Two	THE NEXT MORNING
Scene Three	SEVERAL MONTHS LATER
Scene Four	SEVERAL MOMENTS LATER
Scene Five	FOUR HOURS LATER
Scene Six	HALF AN HOUR LATER
Scene Seven	A SPLIT SECOND LATER
Scene Eight	SEVERAL HOURS LATER

Presented by special arrangement with William Morris Agency, Inc.

Scenic Designer
Costume Designer
Lighting Designer
Sound Designer
Properties Designer
Stage Manager
Production Assistant
Fight Director
Assistant Fight Director
Photography Consultant
Translator
Dramaturg
Casting

PAUL OWEN
JANE GREENWOOD
TIM SATERNOW
KURT B. KELLENBERGER
MARK WALSTON
ALYSSA HOGGATT*
NANCY PITTELMAN
RICK SORDELET
ANGIE FIGG
TINA BARNEY
YOLANDA G.H. GERRITSON
TANYA PALMER
JAY BINDER C.S.A.
JACK BOWDAN C.S.A.

*Member of Actors' Equity Association, the union of professional actors and stage managers of the United States

There will be no intermission.

Rembrandt's Gift was commissioned by Actors Theatre of Louisville.



A Hard Act to Follow

Baer Fabrics has over 1000 drapery and upholstery fabrics in stock, plus an abundant array of trims, window treatments, hardware and notions. Visit our Home Décor floor and let the decorating begin.

515 EAST MARKET • (502) 583-5521
HOURS: MON 9-9 TUE-SAT 9-5:30

Baer
FABRICS



actors theatre of louisville **PRESENTS**

26th Annual Humana Festival of New American Plays

made possible by a generous grant from The Humana Foundation

TEN – MINUTE PLAYS

april **07, 2002**

BAKE OFF

by **SHERI WILNER**

directed by **SULLIVAN CANADAY WHITE**

THE CAST (in order of appearance)

Paul	JEFFREY BEAN*
Rita	KIM MARTIN-COTTEN*
The Pillsbury Doughboy	MICHAEL SHANNON*
Voice of the Announcer	TOM TETI*

Setting: The "cooking floor" of the Pillsbury Bake-off.

Time: 1997; one year after the first man won the Grand Prize in the history of the Bake-off.

Presented by special arrangement with Harden–Curtis Associates

Dramaturg **STEPHEN MOULDS**

CLASSYASS

by **CALEEN SINNETTE JENNINGS**

directed by **RAJENDRA RAMOON MAHARAJ**

THE CAST (in order of appearance)

Ama	JEREMY ALAN RICHARDS*
BigB	NIKKI E. WALKER*
Miles	ROBERT BEITZEL*

Setting: A room that serves as a modest campus radio studio at Bellmore College.

Presented by special arrangement with the playwright

Dramaturg **TIMOTHY DOUGLAS**

TEN – MINUTE PLAYS

april **07, 2002**

NIGHTSWIM

by **JULIA JORDAN**

directed by **RAJENDRA RAMOON MAHARAJ**

THE CAST (in order of appearance)

Rosie **KATE UMSTATTER†**

Christina **STACY L. MAYER†**

Setting: Outside Christina's house

Time: Midnight

Presented by special arrangement with Writers and Artists Agency

Dramaturg **STEPHEN MOULDS**

Scenic Designer	PAUL OWEN
Costume Designer	JOHN WHITE
Lighting Designer	PAUL WERNER
Sound Designer	COLBERT DAVIS
Properties Designer	DOC MANNING
Stage Manger	HEATHER FIELDS*
Assistant Stage Manager	DEBRA A. FREEMAN*

*Member of Actors' Equity Association, the union of professional actors and stage managers of the United States

†Member of Actors Theatre's Apprentice Company

There will be no intermission.



actors theatre of louisville **PRESENTS**

26th Annual Humana Festival of New American Plays

made possible by a generous grant from The Humana Foundation

SNAPSHOT

march **29** - april **07, 2002**

a dramatic anthology by

**TANYA BARFIELD, LEE BLESSING,
MICHAEL BIGELOW DIXON, JULIE JENSEN,
HONOUR KANE, SUNIL KURUVILLA,
DAVID LINDSAY-ABAIRE, VICTOR LODATO,
QUINCY LONG, DEB MARGOLIN, ALLISON MOORE,
LYNN NOTTAGE, DAN O'BRIEN, VAL SMITH,
ANNIE WEISMAN, CRAIG WRIGHT & CHAY YEW**

directed by **RUSSELL VANDENBROUCKE**

THE CAST (all members of the Acting Apprentice Company)

Colette Beauvais	Anthony Luciano
Joey Belmaggio	Alan Malone
Matt Bridges	Stacy L. Mayer
Camilla Busnovetsky	Elisa Morrison
Ryan Clardy	Melanie Rademaker
Ellie Clark	Dave Secor
Kristi Funk	Donovan Sherman
Jake Goodman	Colin Sullivan
Amy Guillory	Kate Umstatter
Christopher Illing	Lindsey White
Barbara Lanciers	Tom Wooldridge

Scenic Designer	PAUL OWEN
Costume Designer	JOHN WHITE
Lighting Designer	TONY PENNA
Sound Designer	COLBERT DAVIS
Properties Designer	DOC MANNING
Stage Manager	SARAH HODGES
Dramaturgs	AMY WEGENER & TANYA PALMER



This photograph by Lee Friedlander, *Mount Rushmore, South Dakota*, was given to 16 playwrights, whose varied responses to the image (in dramatic form) constitute *Snapshot*. The photograph was taken in 1969, and is included in a collection of Friedlander's work titled *The American Monument* (New York: The Eakins Press Foundation, 1976).

Commissioned by Actors Theatre of Louisville.

There will be no intermission.



actors theatre of louisville **PRESENTS**

26th Annual Humana Festival of New American Plays

made possible by a generous grant from The Humana Foundation

THE TECHNOLOGY PROJECT

march **26-** april **07, 2002**

VOICE PROPERTIES

(ON A FIRST DATE AFTER A FULL YEAR OF FEBRUARYS)

by **JOHN BELLUSO**

F.E.T.C.H.

by **ALICE TUAN**

VIRTUAL MEDITATION #1

by **SARAH RUHL**

Admission to the technology plays is free and open to the public, but access is extremely limited and will be granted on a first come, first served basis. A complete schedule of performances is available from the box office.

Made possible by the generous support of the Ensemble Studio Theatre, Alfred P. Sloan Foundation Science & Technology Project, and Carnegie Mellon University's Entertainment Technology Center.

Commissioned by Actors Theatre of Louisville.

PLAYWRIGHTS



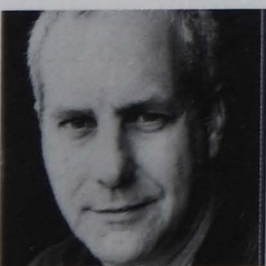
TANYA BARFIELD (Snapshot)

Ms. Barfield is currently in Juilliard's Playwriting Program, studying with Marsha Norman and Christopher Durang. In 1998, she was a playwriting fellow at New York Theatre Workshop, where she wrote her first play, *The Houdini Act*, which was a Princess Grace finalist in 2000. Before turning to playwriting, she did solo performance, receiving fellowships from the New York Foundation for the Arts, the Franklin Furnace Fund for Performance Art and a residency at Mabou Mines. Her solo, *Without Skin or Breathlessness*, is published in an anthology of solo performers by Grove Press. In 1997, *Ms. Magazine* named her "One of the 21 Young Women to Watch for in the 21st Century."



JOHN BELLUSO (Voice Properties) Plays include *The Body of Bourne*, *Henry Flamethrowa*, *The Rules of Charity*, *Traveling Skin* and *Body Songs*, a collaboratively written theatre

piece created by legendary director Joseph Chaikin and featuring text by John with music and lyrics by Elizabeth Swados. His work has been produced at the Mark Taper Forum, Trinity Repertory and Victory Gardens Theater, among others, and has been developed by A.S.K. Theater Projects, the National Playwrights Conference and the Public Theater. Mr. Belluso received his Bachelor's and Master's degrees from NYU's Tisch School of the Arts Dramatic Writing Program where he studied with Tony Kushner, Tina Howe and Eduardo Machado, among others. Originally from Warwick, Rhode Island, he is currently living in Los Angeles.



LEE BLESSING (Snapshot) **Broadway and London's West End:** *A Walk in the Woods*. **Off-Broadway:** *Eleemosynary*, *Cobb*, *Thief River*, *Chesapeake* and *Down the Road*—plus *Fortinbras*, *Lake Street Extension*, *Two Rooms*, and *Patient A*, all in the 1992-93 Signature Theatre Season. A new play, *Black Sheep*, premiered at Florida Stage in December. *The Winning Streak*, directed by the author, was premiered at the Ensemble Theatre of Cincinnati last year. Other plays include *Going to St. Ives*, *Independence*, *Riches*, *Oldtimers Game* and *Nice People Dancing to Country Music*. **Awards:** The American Theatre Critics Award, the L.A. Drama Critics Award, the Great American Play Award, the Humanitas Award and the George and Elisabeth Marton Award, among others. Tony Oliver nominations, as well as one for the Pulitzer Prize. Author

of over twenty plays and screenplays. Currently resides in New York City.



JOCELYN CLARKE (Score) is commissioning manager of the National Theatre, Ireland (Abbey Theatre). He was lead theatre critic with *The Sunday Tribune* for nine years, and was a contributor to *Irish Theatre Magazine*, *The*

Sunday Times and *American Theatre*. He has lectured in theatre criticism and dramaturgy at the Samuel Beckett Centre, University College Dublin, and Dartington College in the UK. He has written three adaptations for SIT company—*Bob*, adapted from interviews with theatre director Robert Wilson; *Alice's Adventures* from Lewis Carroll's *Alice's Adventures Underground*; and *ROOM* from the writings of Virginia Woolf. For the Blue Raincoat Theatre Company in Sligo, Ireland he has written two adaptations of Carroll's *Alice's Adventures in Wonderland* and *Through the Looking Glass*.



MICHAEL BIGELOW DIXON

(Snapshot) was Literary Manager and, in his last year, Associate Artistic Director at Actors Theatre from 1985 to 2001. He's currently Literary Manager at the Guthrie Theater in Minneapolis,

and he recently directed the world premiere of Lee Blessing's *Black Sheep* at Florida Stage. He has written more than 20 published and produced plays, most with Val Smith, and has edited 28 volumes of plays and criticism with Amy Wegener, Tanya Palmer, Liz Engelman and Michele Volansky. He directed the world premiere of Naomi Wallace's *Standard Time* in the 2000 Humana Festival, as well as Actors' productions of *Wit*, *Nixon's Nixon*, and *The Creditors*.



JEROME HAIRSTON (a.m. Sunday) originally from Yorktown, Virginia, Mr. Hairston received his BA from James Madison University and is a recent graduate of Columbia University's

M.F.A. playwriting program. His plays include: *L'Eboueur Sleeps Tonight*, *Forty Minute Finish*, and *Method Skin*. He was featured twice in the Young Playwrights Festival in New York ('93, '94) and was the recipient of the 1998 Kennedy Center/American College Theater Festival's National Student Playwriting Award. His work has been developed and presented at theaters such as Playwrights Horizons, The Atlantic Theatre Company, The Public Theater, and Actors Theatre of Louisville. He has also participated in The Sundance Theater Lab and the Eugene O'Neill Theater Center's National Playwrights Conference. Mr. Hairston is currently a 2001 playwriting fellow at Manhattan Theatre Club.



TINA HOWE (*Rembrandt's Gift*) is the author of *The Nest*, *Birth and After Birth*, *Museum*, *The Art of Dining*, *Painting Churches*, *Coastal Disturbances*, *Approaching Zanzibar*, *One Shoe Off*, *Pride's Crossing* and *The Divine*

Fallacy. Most of these works can be read in her two collections published by the Theatre Communications Group. Major awards include an Obie for Distinguished Playwriting, a Rockefeller Grant, two NEA Fellowships, a Guggenheim, The New York Drama Critics' Circle award, a Tony nomination and two honorary degrees. She has just completed a new translation of Ionesco's *The Bald Soprano* and *The Lesson* for the Manhattan Theatre Club, as a recipient of a National Theatre Artist Residency grant. Ms. Howe has been a Visiting Professor at Hunter College since 1990.



CALEEN SINNETTE JENNINGS (*Classyass*) is Professor of Theatre at American University in Washington, D.C. She teaches acting, play writing and theatre history among other courses. She also directs for main

stage and is a two-time recipient of a Kennedy Center/American College Theatre Festival award for Meritorious Achievement in Directing. She is a two-time nominee for the Charles MacArthur Award for Outstanding New Play (Helen Hayes Awards), and in 1999 she received a \$10,000 grant from the Kennedy Center Fund For New American Plays for her play *Inns & Outs*. Her play *Playing Juliet/Casting Othello* was performed at the Folger Elizabethan Theatre in 1998. Four of her plays have been published by Dramatic Publishing Company, and two of her children's plays have been published by New Plays, Incorporated.



JULIE JENSEN (*Snapshot*) her play *Last Lists of My Mad Mother* has had a dozen productions, including one in Edinburgh, Scotland, and another in New Jersey, directed by Olympia Dukakis. *Two-Headed*, commissioned by

ASK Theatre Projects in LA, won the Mill Mountain Playwriting Competition and was produced in New York and L.A., where it was named one of the best plays of the year by *LA Times*. *The Lost Vegas Series* won the Joseph Jefferson Award for Best New Work and was produced in Chicago and London. *White Money* won the Award for New American Plays and has been produced coast-to-coast in this country. Ms. Jensen is a recent recipient the NEA/TCG Residency Grant, and a major award from the Pew Charitable Trust. She is currently Resident Playwright at Salt Lake Acting Company in Salt Lake City, Utah.



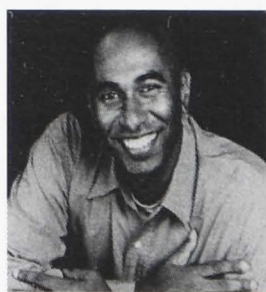
JULIA JORDAN (*Nightswim*) won the 1997 Francesca Primus Prize out of Denver Center Theatre Company for her play *Tatjana in Color*, which was featured in their 1998 U.S. West Theatre Fest. *Tatjana* was

shortlisted for the Susan Smith Blackburn Award and published by Smith & Kraus in their volume *Women Playwrights: The Best Plays of 1997*. It will be produced this summer at the Contemporary American Theater Festival. Ms. Jordan's other plays include *Smoking Lesson* which was workshopped at the Sundance Playwrights Lab, the Intiman Theatre New Voices Festival and the Cleveland Play House Next Stage Festival; and *3-1/2 Catholics*, which also was just developed at Cleveland's Next Stage Festival. Ms. Jordan recently completed her first screenplay, *Satin Doll*. A former playwright-in-residence at Juilliard, she received her Masters of Philosophy in Creative Writing at Trinity College, Dublin.



HONOUR KANE (*Snapshot*)

Ms. Kane's work has been produced by The Public Theater, Sydney's annual Mardi Gras Arts Festival, and New Georges. Her plays have been developed by Lincoln Center Theatre, Playlabs, and London's Royal Court Theatre. A member of New Dramatists, she holds fellowships from the NEA, the New York Foundation for the Arts, a Pew Fellowship in the Arts, and a Bunting Fellowship at Radcliffe.



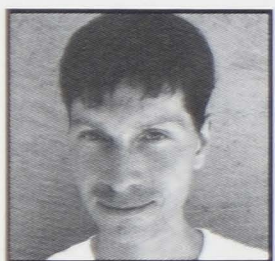
SUNIL KURUVILLA (*Snapshot*)

Mr. Kuruvilla's plays have been developed at various theatres including New York Theatre Workshop, the Williamstown Theatre Festival and Portland Center Stage, and he has been commissioned by such theatres as The Joseph Papp Public Theater, The Wilma Theatre and South Coast Repertory. Recent awards include the Cole Porter ASCAP Award and the Truman Capote Literary Fellowship, and he has been commissioned by Showtime to write a screenplay adaptation of *Fighting Words*. That play recently had its premiere at the Factory Theatre in Toronto, Canada. *Rice Boy* had its world premiere at the Yale Repertory Theatre and its West Coast premiere at the Mark Taper Forum. Mr. Kuruvilla's work has been generously supported by the Canada Council and the Ontario Arts Council. Mr. Kuruvilla graduated from the Yale School of Drama in 1999. He has been hired to write a movie for CTV about the wrestler Bret Hart.

**DAVID LINDSAY-ABAIRE**

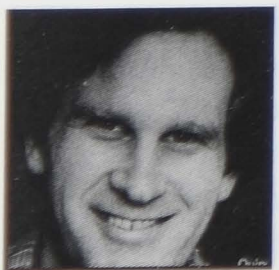
(Snapshot) Mr. Lindsay-Abaire's play, *Fuddy Meers*, recently ran off-Broadway at the Minetta Lane Theatre produced by Manhattan Theatre Club and Jean Doumanian Productions. His play

Wonder of the World premiered at Washington D.C.'s Woolly Mammoth Theatre Company and was in 2002 produced by Manhattan Theatre Club. His play *Kimberly Akimbo* will premiere at South Coast Repertory this spring. He is also writing a new play for Mosaic Entertainment to star Janeane Garafalo, as well as *Road to Ruin*, an original screenplay for Fox 2000, *Robot World*, an animated feature for 20th Century Fox and a screen adaptation of *Fuddy Meers* for Jonathan Weisgal. His other plays include *A Devil Inside*, *Dotting & Dashing*, *How We Talk in Boston*, *A Show of Hands* and *The Kitchen Sink Drama*, among others. Mr. Lindsay-Abaire is a graduate of Sarah Lawrence College, The Juilliard School's Lila Acheson Wallace American Playwrights Program and a proud member of New Dramatists, the Dramatists Guild, and the Writers Guild of America.

**VICTOR LODATO** (Snapshot)

is a playwright and actor. He has been the recipient of fellowships from The National Endowment for the Arts, The Robert Chesley Foundation (NY), Art Matters (NY), as well as a New

Forms Grant (Rockefeller Foundation/NEA). In 1999, he was the Princess Grace Playwriting Fellow at New Dramatists (NY). This year, Mr. Lodato's play *The Eviction* (winner of the Roger L. Stevens Award from the Kennedy Center Fund for New American Plays) received its world premiere at Magic Theatre. Other plays have been produced at the Guthrie Theater and Ensemble Theatre of Cincinnati—and workshopped at the O'Neill Playwrights Conference, The Playwrights' Center, and the Bay Area Playwrights Festival. Recent commissions include new plays for South Coast Repertory and Primary Stages. Mr. Lodato is a graduate of Rutgers University.

**QUINCY LONG** (Snapshot)

Most recent productions include *The Lively Lad*, presented by New York Stage and Film at the Powerhouse Theatre at Vassar, and Soho Rep's production of *The Year of the Baby*. *The Joy of Going*

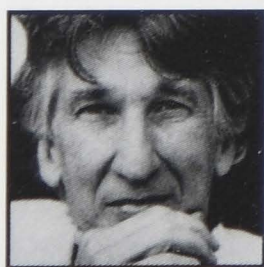
Somewhere Definite, commissioned by the Mark Taper Forum, won a 1996 Fund for New American Plays Award and has been produced by the Atlantic Theatre Company, the Mark Taper Forum, the Magic Theatre and others. Mr. Long has recently adapted the play for Icon Productions in Los

Angeles and has adapted another play, *Shaker Heights*, which was nominated for an Outer Circle Critic's Award, for Atlantic Films in New York City. Mr. Long, who is from Warren, Ohio and lives in New York City, was recently commissioned by Playwrights Horizons and also the Ensemble Studio Theatre/Sloan Foundation Science and Technology Project. He is a graduate of the Yale School of Drama and a member of the New Dramatists and the Ensemble Studio Theatre as well as the HB Playwrights Unit.

**DEB MARGOLIN** (Snapshot)

is a playwright, performance artist and founding member of Split Britches Theatre Company. She is the author of six full-length solo performance pieces, which she has toured throughout the United

States, and is the recipient of a 1999-2000 OBIE Award for Sustained Excellence of Performance. Her solo performance piece titled *O Wholly Night and Other Jewish Solecisms* was commissioned by the Jewish Museum of New York in 1996 and subsequently enjoyed a successful run at the Interart Theater in New York City. Ms. Margolin's play *Critical Mass* premiered at Performance Space 122 in New York in 1997, and her next play, *Bringing the Fishermen Home*, was workshopped in NYC and was part of the New Work Now! Festival, and premiered in April 1999 at the Cleveland Public Theater. In 2001, PS122 presented her play *Three Seconds in the Key*, a meditation on illness, love and basketball. Her latest play, *Why Cleaning Fails*, ran in January 2002 at HERE Arts Center in New York. Ms. Margolin has lectured extensively at universities throughout the country, has been an artist-in-residence at Hampshire College and University of Hawaii, and is currently a faculty lecturer in Playwriting and Performance at Yale University's Theater Studies Program. Ms. Margolin is a staff writer for *nerve* magazine.

**CHARLES L. MEE** (Limonade)

Tous les Jours) His play *First Love* was produced at New York Theatre Workshop in the fall of 2001. *True Love* was produced at the Zipper Theatre in New York in the winter. And *Big Love*, which

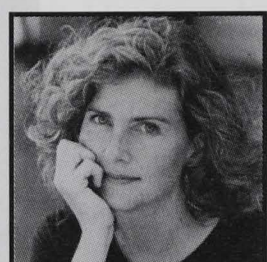
premiered at the Humana Festival in 2000, performed in the Next Wave Festival at Brooklyn Academy of Music this past December. Among his other plays are *Wintertime*, which was developed this past summer at Sundance, and will open at La Jolla Playhouse next July before coming to New York. His *bobrauschenbergamerica* opened this past spring at the Humana Festival and will re-open at New York Theatre Workshop in the fall of 2002. His complete works are available on the internet at www.charlesmee.org. Mr. Mee's work is made

possible by the support of Richard B. Fisher and Jeanne Donovan Fisher.



MARLANE MEYER (*The Mystery of Attraction*) Ms. Meyer's plays include *Etta Jenks*, *Kingfish*, *The Geography of Luck*, *Why Things Burn*, *Moe's Lucky Seven*, and *The Chemistry of Change*.

She's been produced at the Los Angeles Theatre Centre, The Women's Project, Playwrights Horizons, The Joseph Papp Public Theatre, The Royal Court Theatre and South Coast Repertory. Her plays have received many awards including The Joseph Kesselring Award, The Susan Smith Blackburn Prize and The Pen Center Award for Drama.



ALLISON MOORE (*Snapshot*) recently completed her M.F.A. at the Iowa Playwrights Workshop. In 2001, her play *Eighteen* was developed at The O'Neill Playwrights Conference and produced at Kitchen Dog Theater in Dallas, and *The Sad Misadventures of Patty*, *Patty's Dad*, *Patty's Friend Jen* and *a Bunch of Other People* was co-produced by Cheap Theatre and the Playwrights' Center in Minneapolis. Her other plays have been developed at the Playwright's Center, produced at the University of Iowa, and read at the Williamstown Theatre Festival, The Cherry Lane Alternative, and The Centenary Stage Company. Ms. Moore is the recipient of the Iowa Arts Fellowship in Playwriting, the Kemp and Felton Fellowships, and the Rosenfeld Playwriting Award.



LYNN NOTTAGE (*Snapshot*) is a playwright from Brooklyn. Her work has been presented in New York at BACA Downtown, The Knitting Factory and the New York Shakespeare Festival, as part of the New Works Project. She recently had a work featured in *A My Name is Still Alice* at Second Stage. Regionally, her work has appeared at Rites and Reasons, The Black Theatre Festival in New Haven and The Yale Cabaret. She is a member of the Obie Award-winning New Works Project, Playwrights Horizons Writers Unit and is currently a resident artist at Mabou Mines. Ms. Nottage has participated in a number of awareness raising theatre projects including *Shelter*, a collection of short works by women about the plight of homeless women, and she was a producer of *Naked Rights*, a celebration of the Universal Declaration of Human Rights at the Naked Angels Theatre Company. Last year, she participated in the Voice and Visions Theatre retreat at Smith College, and is a graduate of the Yale School of Drama.



DAN O'BRIEN (*Snapshot*) is a resident of New York City and currently commissioned to write a play for The Kennedy Center. His plays have been developed at The O'Neill Playwrights Conference, Manhattan Theatre Club, Ensemble Studio Theatre, The New Harmony Project, Magic Theatre, and Brown University and produced at The Kennedy Center, California Repertory Company, HERE, and Perishable Theatre. Mr. O'Brien is a graduate of Middlebury College and Brown University's M.F.A. playwriting program.



ADAM RAPP (*Finer Noble Gases*) Awards: 1997 Herbert & Patricia Brodtkin Scholarship, two Lincoln Center Le Comte du Nouy Awards, 1999 Princess Grace Award, 2000 Mabou Mines Suite Residency, 2000 Roger L. Stevens Award, 2001 Helen Merrill Award. Past productions: *Nocturne* (A.R.T. [Elliot Norton Award - Outstanding New Script, Best New Play by the Independent Reviewers of New England], New York Theatre Workshop, Berkeley Rep); *Animals and Plants* (A.R.T.), *Ghosts in the Cottonwoods* (Victory Gardens, 24th Street Theatre - L.A., Arcola Theatre - London); *Blackbird* (Bush Theatre - London); *Stone Cold Dead Serious* (A.R.T.). Upcoming productions: *Nocturne* (Cincinnati Shakespeare Festival, D.C.'s Studio Theatre); *Blackbird* (Pittsburgh City Theatre); *Dreams of the Salthorse* (Encore Theatre, S.F.); *Faster* (Rattlestick, NYC). **Education:** Clarke College, Dubuque, IA; Juilliard Playwriting Fellowship.



SARAH RUHL (*Virtual Meditation #1*) Her plays include: *Passion Play*, *Melancholy Play*, *Eurydice*, *Late*, *Orlando*, and *Chekhov: Shorts*. Her plays have been heard at the Sundance Theatre Lab, New York Theatre Workshop, New Dramatists, the McCarter Theater, the Flea, the Ohio Theater, New Georges, the Children's Theatre Company, Trinity Repertory Company, Annex Theatre, Chicago Dramatists and Victory Gardens. Her plays have been supported by commissions from the McCarter Theatre, Actors Theatre of Louisville, and the Piven Theatre Workshop, as well as by residencies at the Millay Colony, Ragdale Foundation, and Ucross Foundation. *Melancholy Play* can be seen on-line, and an excerpt from *Passion Play* can be seen in *American Theatre Magazine*. She received her M.F.A. from Brown University, and now lives in Providence, RI.



VAL SMITH (*Snapshot*) is the author of numerous plays that have been published and produced nationally. Her most recent full-length, *Marguerite Bonet*, was published in *Best Plays by Women of 1998*. Her ten-minute play, *Meow*, premiered in the 1998 Humana Festival.



ALICE TUAN (*F.E.T.C.H.*) She is the recipient of both the Richard E. Sherwood Award through Los Angeles' Mark Taper Forum, and the Colbert Award for Excellence through New York's Downtown Arts Project. Productions include *Last of the Suns* (Berkeley Repertory Theatre), *Ikebana* (East West Players), and *Some Asians* (Perishable Theater). Performances include *New Culture for a New Country* (En Garde Arts) and *Sprawl* (with Rachel Hauck at the Actor's Gang). Ms. Tuan recently finished a residency at East West Players through the NEA/TCG Playwright Residency Program where she assembled the 'Turn Asian America Inside Out' Conference/Performance to find new spaces to think about Asian America. She is also the Resident Playwright at the Los Angeles Theater Center through the Los Angeles Cultural Affairs Dept. Recent projects include *Hit* (a Public Theater commission), the adaptation of Middleton's *The Roaring Girl* (through the Foundry Theater) and *The 2050 Project* (with New World Theater). Recent productions include *mALL* (Cypress College, Dec. 2000) and a new version of *Last of the Suns*, directed by Chay Yew (LATC, Feb. 2001), *Ajax (por nobody)* at The Flea and *Coastline* (virtual hypertext theater) at ASK's Common Ground Festival.



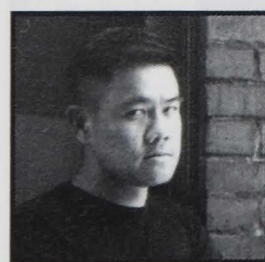
ANNIE WEISMAN (*Snapshot*) is an L.A. based playwright, who is currently collaborating on an original musical for Trinity Repertory Theatre in Providence, RI and is also working on new plays for the Mark Taper Forum and South Coast Repertory. Her plays include *Hold Please* (South Coast Repertory), *Be Aggressive* (La Jolla Playhouse), and *Meaningful Ritual* (ASK Theatre Projects). Other theatre credits include Sundance Theatre Lab, SoHo Rep, GeVa Theatre, Austin Scriptworks, and Printer's Devil Theatre in Seattle. *Be Aggressive* was a finalist for the 2001 Susan Smith Blackburn Prize. Ms. Weisman is a graduate of Williams College.



SHERI WILNER (*Bake Off*) is thrilled to be back at Actors where her play *Labor Day* premiered at the 1999 Humana Festival and was a co-recipient of the 1998 Heideman Award. In 1999, Actors also produced her play *Joan of Arkansas* in the Apprentice Showcase. Her play *Hunger*, produced by the Contemporary American Theater Festival, was chosen for the Smith & Kraus anthology *The Best New Plays of 1999*. *Hunger* also received readings at the Williamstown Theatre Festival, The Women's Project, Cherry Lane, and Ensemble Studio Theater. Her other plays include *Relative Strangers* (published by Applause Books in *The Best New Plays of 2000*) and *Little Death of a Salesman*. She received her M.F.A. in Playwriting from Columbia University and is a Dramatists Guild Playwriting Fellow.



CRAIG WRIGHT (*Snapshot*) Plays include: *The Pavilion*, *Orange Flower Water*, and *Molly's Delicious*. He has received several awards for his writing, including fellowships from the McKnight Foundation and the National Endowment for the Arts. In addition to being a playwright, Mr. Wright has worked as a fishmonger, advertising copywriter, and hotel developer. He is currently a member of the rock band *Kangaroo* and lives in St. Paul with his wife, Lorraine LeBlanc, and their son, Louis.



CHAY YEW (*Snapshot*) Mr. Yew's plays include *Porcelain*, *A Language of Their Own*, *Red*, *Wonderland*, *As if He Hears*, *Dirt and Desire* and *A Beautiful Country*. He also adapted Wei Jingsheng's *The Courage to Stand Alone* and Lorca's *The House of Bernarda Alba*; his performance text includes *Home: Places Between Asia and America*. His work has been produced by the New York Shakespeare Festival's Public Theatre, Royal Court Theatre (London), Long Wharf Theatre, Manhattan Theatre Club, La Jolla Playhouse, Intiman Theatre, Portland Center Stage, East West Players, Dallas Theater Center, Cornerstone Theatre Company, The Group Theatre and TheatreWorks (Singapore), to name a few. He is the recipient of the London Fringe Award, George and Elisabeth Playwriting Award, GLAAD Media Award, APGF Community Visibility Award, Drama-Logue Award and the Robert Chesley Award.



Atelier

ORIENTAL RUGS

Come see our quality selection of antique and vegetable-dye rugs.

3900 SHELBYVILLE ROAD
ST. MATTHEWS STATION
502 896-2277

OLD LOUISVILLE'S PREMIER RESTAURANT & BAR

Buck's

IN THE MAYFLOWER
425 W. ORMSBY
502. 637.5284

LUNCH SERVED
MON.-FRI. 11-3 PM

DINNER SERVED
MON. - THURS. 5-10 PM FRI.-SAT. 5-11PM

**THEATRE MENU ITEMS 5-7 PM
SPECIAL PRICING**

PIANIST NIGHTLY
ELEGANT CIGAR ROOM

RESERVATIONS REQUESTED
Available Every Day For Private Parties



Experience the personal hospitality of Vincenzo Gabriele, tableside service, fresh seafood, the finest veal, our own desserts created daily in Agostino's kitchen.

Lunch: Monday-Friday 11:30-2:30

Theatre Menu: Monday-Saturday 5:30-6:30

Dinner: Monday-Thursday 5:30-10:00

Friday & Saturday 5:30-11:00

Nine private dining rooms for catered events
Catering: 580-1371



150 South Fifth and Market
580-1350



REALTORS meats CLEANERS

Brownsboro Center

The Bean Café & Coffee Shop
British Custom Tailors
Brownsboro Animal Clinic
Brownsboro Barber Shop
Brownsboro Hardware & Paint
Brownsboro Book Center
Brundage Engravers and Jewelers
Charlane Bath Boutique
Oxford Cleaners
Evanston Publishing
Ewald Associates Interior
Gasthaus German Restaurant
Ginna's • Inch By Inch Hair Salon
Mike Best Meat Market
Prudential Parks & Weisberg Realtors
Party Mart • PNC Bank • Roundhouse
Stock Yards Bank & Trust Co.
Vale Photography Studio
...even a Post Office
Everything Under The Sun!
Brownsboro Road at Rudy Lane

Pour le Bain Java **HARDWARE** *Pet Doctor Books*

Barber Salon Interiors Call My Tailor! Party!

Schmitzel

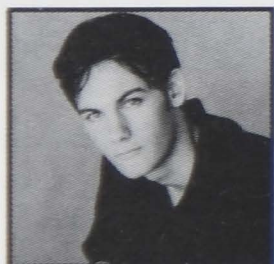
ENGRAVING

Fashion

THE ACTING COMPANY



JEFFREY BEAN (Gray-Finer Noble Gases) **Regional Theatre:** Alley Theatre, company member, eight seasons: *Oscar Wilde, Gross Indecency; Otto, The Food Chain; Einstein, Picasso at the Lapin Agile; Tristan Tzara, Travesties; Popolitipov, Slavs!*; Billy Bishop, *Billy Bishop Goes to War; La Croix, Danton's Death; Bluntschli, Arms & the Man; Nicodemus, et al, The Mystery of Irma Vep; Tartuffe, Tartuffe; George Jessel, American Vaudeville; Casca, Julius Caesar Wilma Theatre: Harold Gorringer, Black Comedy; Moon, The Real Inspector Hound. Broadway: *Francis, Bells Are Ringing; Kappelmeister Bono, Amadeus. Off-Broadway:* *Defying Gravity. Television:* *Wallis, Law & Order: SVU; Rodale, Law & Order. Additional Credits:* Princess Grace Award 1993; Claire B. Rosenfield Award, Playwright, *Killing The Spring*, 1989; For complete list of credits visit <http://members.tripod.com/jeffreybean1>*



ROBERT BEITZEL (Staples-Finer Noble Gases) joins Actors for the first time. He most recently appeared in *A Free Man in Paris* at the Mint Theater. **Regional Theatre:** *Finer Noble Gases* and *Parts Unknown* at the O'Neill Theater Center, *Romeo and Juliet* at Kingsmen Shakespeare Festival. **Television:** *ER, The Young and the Restless, All My Children, As The World Turns, General Hospital. Other Theater:* *Troilus and Cressida* and *Romeo and Juliet* at Colorado Shakespeare Festival, *The Liddy Plays* with Rising Phoenix Repertory, *Cake* at Lincoln Center. He holds a B.F.A. from the Juilliard School.



CLAUDIA FIELDING (Denise-The Mystery of Attraction) is making her Actors debut. **Regional Theatre:** The Alley, Yale Repertory, Berkshire Theatre Festival, Fulton Opera House, Hudson Guild, Sheperdstown Theatre, and touring with the Acting Company. **Off-Broadway:** Manhattan Theatre Club, Primary Stages, The Minetta Lane Theatre, Century Center for the Performing Arts, and The Public Theatre. **Film:** A few independent movies, including *The Making of*, appearing this Spring. **Television:** *Law & Order Criminal Intent, Deadline, Showtime's The Hoop Life, HBO's Hard Core T.V., Late Night with Conan O'Brien, and All My Children. Additional Credits:* M.F.A. from Yale School of Drama and an adjunct Professor at Queens College.



TARAH FLANAGAN (Lorie-a.m. Sunday) is delighted to be making her Actors Theatre debut. She was most recently seen in *A Midsummer Night's Dream, Relative Values, and An Ideal Husband* at the Alabama Shakespeare Festival. Other ASF credits include *As You Like It, Richard III, Measure for Measure, When We are Married, 'Tis Pity She's a Whore, The Illusion, Love for Love, and Alice in Wonderland. Regional Theatre:* *The Secret Garden* at Studio Arena Theatre, *Venice* at the Crossroads Theatre, *The Heiress* at Repertory Theatre of St. Louis, and *The Matchmaker* at PCPA TheatreFest. **Additional Credits:** B.F.A. from Webster University, M.F.A. from the University of Alabama at ASF.



PENNY FULLER (Polly Shaw-Rembrandt's Gift) is making her Actors debut. She received a Tony Award nomination this past season for her performance as "Gabrielle" in Neil Simon's *The Dinner Party. New York:* *A New Brain* (Drama Desk Nomination), *An American Daughter* and *Ancestral Voices* at Lincoln Center. *New England* and *Three Viewings* (Drama Desk Nomination) at Manhattan Theatre Club. Her Broadway career began with *Barefoot in the Park, Cabaret* and *Rex*. Ms. Fuller created the role "Eve Harrington" in *Applause. Los Angeles:* *Twelfth Night, Henry IV, Chekhov in Yalta, Dutch Landscape* (The Taper), *The Elephant Man* and *Ring Round the Moon* (The Ahmanson), *Betrayal, The Tavern* and *The Seagull. Film and Television:* *China Beach, Cat On a Hot Tin Roof, Miss Rose White, NYPD Blue, ER, and an Emmy for The Elephant Man.*

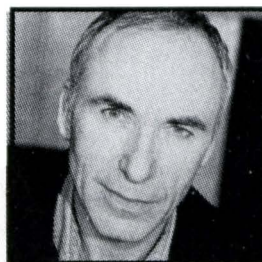


BARBARA GULAN (Helen-a.m. Sunday) is thrilled to be back at Actors. As a former resident company member, theatre audiences may have seen her perform in over 25 productions at Actors such as *As You Like It, Engaged, Autumn Elegy, Creditors, The Lover* and most recently, *Wonderful World* among numerous others. **Off-Broadway:** *The Knee Desires the Dirt* (Women's Project/ 1999 Susan Smith Blackburn), *The Truth Teller* (Circle Repertory), *All That Glitters* (Theatre Four), *Steel Magnolias* (Lucille Lortel) and *Unidentified Human Remains* (Orpheum). **Television:** *Ed* (NBC), *The Sopranos* (HBO), *Island Fever* (ABC pilot), *Spin City* (ABC), *Law & Order* (NBC), *As the World Turns* (CBS) and *All My Children* (ABC). **Film:** *Random Hearts, Dinner and a Movie, The Floys of Neighborly Lane* (Best Short-Blockbuster, Bronze Award-Worldfest, Audience Choice-Marco Island, and HBO Comedy Arts Finalist), *The Wedding Toast* (Showtime), *Bitch in the Kitchen* (HBO),

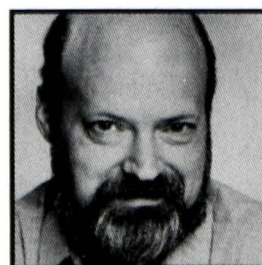
change and *Strictly Business*. **Teaching Credits:** School for Film and Television, NYC (Acting for Film and Television, Approaching Sitcom Pilots and The Business of The Business).



STEVE JUERGENS (Ray—*The Mystery of Attraction*) is pleased to make his debut at Actors. He was most recently seen as Bob Cratchit in *A Christmas Carol* at Hartford Stage. **Regional Theatre:** *The Clearing* at Pittsburgh's City Theatre, *Macbeth*, *Rough Crossing*, *The Clearing* at Hartford Stage Co. **Chicago Theatre:** *'Tis Pity She's a Whore*, *The Physicists*, *The Caine Mutiny Court Martial* at Red Orchid Theatre, *Serious Money*, *The Caucasian Chalk Circle* at the Court Theatre, *The Enormous Room*, *Abingdon Square*, *Coriolanus*, *Johnny on a Spot*, *The Man in the Glass Booth* at the Next Theatre Co., *The Winter's Tale*, *Measure for Measure*, *Twelfth Night* with the Chicago Shakespeare Co. **Off-Broadway:** *The Clearing* with Blue Light Theatre Co. **Education:** B.A. in English from Northwestern University.



ROBERT IAN MACKENZIE (Roger—*The Mystery of Attraction*) Following numerous occupations, from a London policeman to a water ski instructor in Greece, Mr. Mackenzie's career has encompassed theatre, musicals, opera, films, TV, voice-overs, and commercials. **Film:** *A Fish Called Wanda*, *View to a Kill*, *Thomas Crown Affair*. **Shorts:** *Scapegoat*, *Trial by Fire*. **Theatre:** London (West End)—*Beauty and the Beast* (Beast, Victorian Pantomime), *Secret Policeman's Ball*, *Foul Play*. **New York Theatre:** *Jeffrey* (Sterling), *Pirandello's Henry IV* (Baron Tito Belcredi), *Agamemnon* (Greek Chorus), *Art of Success* (Oliver). **Regional Theatre:** *South Pacific* (Emile de Becque), *Camelot* (King Arthur), *Jekyll & Hyde* (Dr. Jekyll), *Much Ado About Nothing* (Leonato), *A Christmas Carol* (Marley's Ghost), *Flute Player's Song* (Reverend Toogood), *Run For Your Wife* (Det. Sgt. Porterhouse). **Television:** *All My Children* (Dr. Griffith), *Guiding Light* (Bishop of San Cristobel). **Operetta:** *Gypsy Baron* (Count Kareska), *Mikado* (Pooh Bah), *Pirates of Penzance* (Pirate King). **Opera:** *Carmen* (Escamillo), *Traviata* (Germont), *Rigoletto* (Rigoletto), *Trovatore* (Conte di Luna), *Ballo in Maschera* (Renato), *Nabucco* (Nabucco), *Aida* (Amonasro).

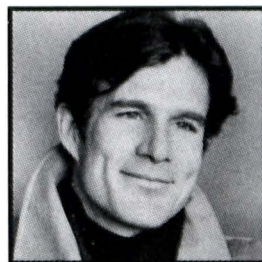


FRED MAJOR (Rembrandt—*Rembrandt's Gift*) a resident actor at Actors, was last seen in *A Christmas Carol*. **At Actors:** *Chad Curtiss*, *Lost Again* (25th Humana Festival) *Little Shop of Horros*, *Wuthering!Heights!*

The!Musical!, *Big Love* (24th Humana Festival) *Hair*, *Heartbreak House*, *Y2K* (23rd Humana Festival), *Below the Belt*, *Corpse!*, *Romeo and Juliet*, *Shadowlands*, *SLAVS!*, *Shooting Simone*, *Born Yesterday*, *Other People's Money*, *Speed-The-Plow* and *To Culebra*. Other Actors credits span over 70 productions and include the 1983 tour to Yugoslavia, the 1985 tour to Romania and Actors' 1992 Australian tour of *Cementville* and *The Trip to Bountiful*. Mr. Major has worked on and off-Broadway and in regional theatre, soaps and commercials, as well as several national tours.



KIM MARTIN-COTTEN (Rita—*Bake Off*) last appeared in *Macbeth* at Actors. She has worked both regionally and in New York City, on stage and as a voice over actor. Some of her roles include the Duchess in *The Duchess of Malfi*, Kate in *Taming of the Shrew*, Elmire in *Tartuffe*, Paulina in *The Winters Tale*, Viola in *Twelfth Night*, Grusha in *Caucasian Chalk Circle*, Mary in *On the Verge*, and recently Reggie Fluty (among others) in *The Laramie Project*. She holds M.F.A.'s from UMKC/Missouri Rep as well as Michael Kahn's new Academy for Classical Acting with the Shakespeare Theatre D.C./George Washington University.

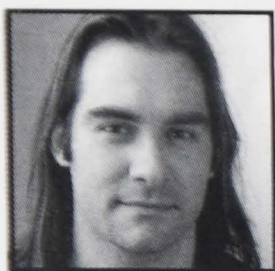


TOM NELIS (Performer—*Score*) With SITI Company: *Orestes*; *The Medium* (Obie Award); *Going, Going, Gone*; *War of the Worlds - Radio Play*; *War of the Worlds*; *Lilith*; *Score* and *Dionysus*, a collaboration with The Suzuki Company of Toga. **Additional credits:** Ahab in Laurie Anderson's *Songs and Stories from Moby Dick* (Brooklyn Academy of Music); the title role in *Henry VI* (Joseph Papp Public Theatre); Oscar Wilde in *Gross Indecency: The Three Trials of Oscar Wilde* (Minetta Lane), *Hot Mouth* (Manhattan Theatre Club) Richard Foreman's *Pearls for Pigs* (Tribeca Performing Arts Center), D.H. Lawrence in *I Rise in Flames Cried the Phoenix* (HERE). M.F.A. University of California, San Diego.



JEREMY ALAN RICHARDS (Jay—a.m. Sunday) **Regional Theatre:** Francisco in *Hamlet*, Orsino in *Twelfth Night*, and Edgar in *King Lear* at the Cleveland Theatre Company. **N.Y. Theatre:** Percy in *Woza Albert* at Lincoln Center Institute; *You Can Clap Now*, Labyrinth Theatre Company at Center Stage; *In Case You Forget* Hip Hop Theatre Festival at P.S. 122; *Historic Times* 78th St. Theatre Lab; *On the Hills of Black America* Imua! Theatre Company at HERE. **Televison:** *One Life To Live*. **Film:** *Pharaoh Jones*,

Shadow Boxer, The Three Mohammeds, Matt in Love, Camouflage, Thin Like Paper, and Downtown with Genevieve Bujold, which will be released in Christmas 2002. Training: Phoenix Theatre Conservatory, SUNY Purchase, M.F.A. NYU.



RAY RIZZO (*Speed-Finer Noble Gases*) joins Actors for the first time with this appearance. He has performed in and about Louisville in such roles as Judas in *Jesus Christ Superstar* and Owen Musser in *The Foreigner*. As a

drummer, Mr. Rizzo is a founding member of the jazz quartet Java Men. He also plays or has played in the bands Days Of The New, King Kong, LπWoo, lovesauce and soulbones, Deep Sky Object, and M. Most recently Mr. Rizzo has begun performing and recording his own music for guitar, bourbon, and voice. He is also a contributing writer for the *Louisville Eccentric Observer*. Visit chezrizzo.com.



DALLAS ROBERTS (*Chase-Finer Noble Gases*) **At Actors:** Y2K. **Off-Broadway:** *True Love* (Zipper Theatre), *Nocturne* (New York Theatre Workshop, also American Repertory Theatre; Elliot Norton Award), *Enter the Night*

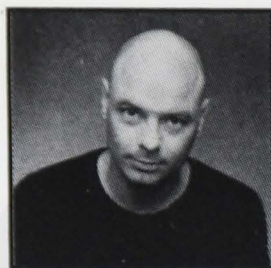
(Signature Theatre). **Regional Theatre:** *Compleat Female Stage Beauty* (CATF). **Film and Television:** *The Hat* (Sundance Short), *Law & Order*, *NY Undercover*.



CHRISTA SCOTT-REED (*Jacqueline-Limonade Tous les Jours*) is delighted to be making her debut at Actors. **Regional credits:** *The Three Musketeers* and *Present Laughter* (Pioneer Theatre); *Much Ado About Nothing*

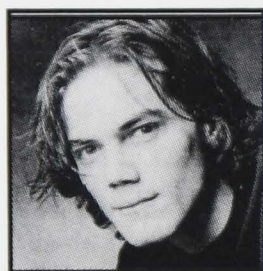
(Cincinnati Play House in the Park and Repertory Theatre of St. Louis); *A Dream Play* and *Yerma* (Cleveland Playhouse); *The Importance of Being Earnest* (GeVa); *You Never Can Tell* (Syracuse Stage); *Holiday* (Olney Theatre Center); *Peter Pan*, *Comedy of Errors*, and *Beethoven 'N' Pierrot* (Denver Center Theatre Company); *A Midsummer Night's Dream* and *Othello* (Colorado Shakespeare Festival); *Private Lives* (Aspen Theatre in the Park).

New York Theatre: Mint Theatre, Flea Theatre, Ensemble Studio Theatre, and Samuel Beckett Theatre. **Television and Film:** *Law and Order: S.V.U.* and *Last Call*. Ms. Scott-Reed received her M.F.A. from the National Theatre Conservatory.



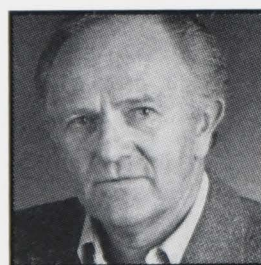
LEE SELLARS (Larry-*The Mystery of Attraction*) is returning to Actors, last appearing in Steven Dietz's *Private Eyes* and Richard Dresser's *Gunshy*. **Regional Theatre:** *The Pavilion* (Contemporary American Theatre Festival), *Inventing Vangogh* (Arizona Theatre Company), and *Of Mice and Men* (Delaware Theatre Company).

Off-Broadway: *Gun-Shy* (Playwrights Horizons), *The Alchemist* (Classic Stage) and an off-off Broadway production of *Buying Time* at the Hypothetical Theatre Co. **Television and Film:** *Love the Hard Way*, *Elizabeth St.*, *Groundhog Day*, *Mo' Money*, *Law and Order*, *The Boardroom*, *Early Edition*, *Eelwax*, *Jesus No. 3*, and recurring roles on *The Untouchables* and *ER*.



MICHAEL SHANNON (*Lynch-Finer Noble Gases*) is making his Actors debut. A native of Lexington, Kentucky, Mr. Shannon has appeared in many stage productions, television and movie roles.

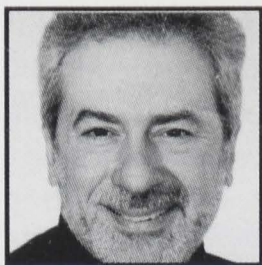
In theater, he has performed in *Winterset* (Illinois Theatre Center), *Woyzeck*, *Killer Joe*, and *Bug* at London's West End. Other companies include Steppenwolf, The Next Lab, and the Red Orchid Theatre. **Film:** *Chicago Cab*, *Cecil B. Demented*, *Tigerland*, *Pearl Harbor*, *Vanilla Sky*, and appearing in the upcoming films *High Crimes*, *Down and Under*, and *8 Mile*.



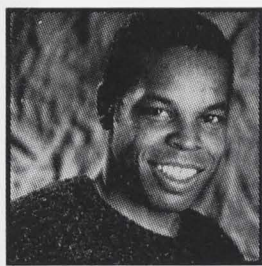
JOSEF SOMMER (Walter Paradise-*Rembrandt's Gift*) has appeared in many Broadway, Off Broadway and regional productions; he has received two Obie Awards as well as a New York Drama Desk nomination.

Most recently, he appeared in the Manhattan Theatre Club productions of A.R. Gurney's *Labor Day* and David Hare's *Racing Demon*, and in Tom Stoppard's *Hapgood* at Lincoln Center Theatre.

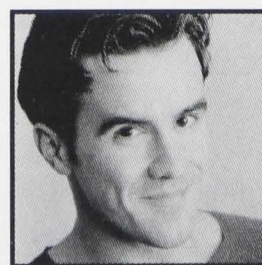
Film: *Family Man*, *The Next Best Thing*, *Patch Adams*, *Moonlight and Valentino*, *The Chamber*, *Nobody's Fool*, *Malice*, *The Mighty Ducks*, *The Rosary Murders*, *Shadows and Fog*, *Chances Are*, *Witness*, *Silkwood*, *Iceman*, *Independence Day*, *Still of the Night*, *Close Encounters of the Third Kind*, *The Front*, *Dirty Harry*, and *The Stepford Wives*. **Television:** *Hostages*, *Mistrial*, *Don't Drink the Water*, *The Young Indiana Jones Chronicles*, *Citizen Cohn*, *An American Story*, *Mourning Becomes Electra*, *The Betty Ford Story*, *Fitzgeralds* and *the Kennedys*, and *Hamlet*.



TOM TETI (Andrew—*Limonade Tous les Jours*) Mr. Teti has completed a run in *The Dreaming of Aloysius in His Search for God*, a world premiere by Louis Lippa at the People's Light & Theater Co. Prior to that he directed *A Christmas Carol* and *Alibi* at the Aedegrow Theater, performed three pieces in People's Light's Out of the Box Festival, and played the baker in the Stephen Schwartz musical *The Baker's Wife* at the Arden Theater in Philadelphia. Mr. Teti is an original company member at People's Light. He also teaches classes for teens.



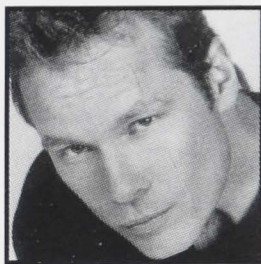
RAY ANTHONY THOMAS (R.P.—a.m. *Sunday*) **At Actors:** *The Piano Lesson*. **Regional Theatre:** *In the Blood* (Guthrie Theater), *A Raisin in the Sun* (City Theatre), *Venue* (Crossroads, N.J.), *American Buffalo* and *Black Eagles*, *Spunk*, *Digging Eleven*, *A Streetcar Named Desire*. New York Stage and Film: *Splash Hatch*, *Trippin' Thru the Carhouse*, *A.M. Sunday* at the O'Neill Festival and *To Kill A Mockingbird* at the Meadow Brook Theatre in Detroit. **Off Broadway:** Member of David Mamet's Atlantic Theater Company, *Force Continuum*, *Beginning of August* (with Mary Steenbergen), *Distant Fires*, *The Lights*, *Saved or Destroyed*, *Volunteer Man*, *A Midsummer Night's Dream*, *Caucasian Chalk Circle*, *The Devils*, *Black Eagle*, *Painting a Wall*. **Film:** *Our Song*, *Random Hearts*, *Rounders*, *I'm Not in Rappaport*, *Malcolm X*, *Jacobs Ladder*, and *Changing Lanes*, the soon-to-be released film with Samuel L. Jackson and Ben Affleck. **Television:** *100 Centre Street*, *Law & Order*, *Homicide*, *Cosby Show*, *Spin City*, *Conan O'Brien*, *I'll Fly Away*, *The Hoop Life*. **Awards:** Obie, Detroit Free Press, L.A. Dramalogue, Audello, and an Emmy consideration.



JOSH WALDEN (Waiter—*Limonade Tous les Jours*) joins Actors for the first time with this appearance. **Regional Theatre:** *Lyle*, *Footloose* at The North Carolina Theatre. **Film:** *Waldo Walker*, *Bad Karma*. **Television:** *Fox After Breakfast*, *RuPaul's Music Video It's Raining Men*. **Other Theatre:** *Nick*, *BIG* for NETworks Presentations, *Emcee*, *Cabaret*, and *Gabey* in *On the Town* at The Venus Rising Company, *Guillaume*, *Pablo* at The York Theatre, *Male Adagio Dancer* aboard the Seabourn Sun Cruise Ship for Morag Productions and *Gospel Soloist*, *Tisch Salute 2000* at Carnegie Hall. **Additional Credits:** B.F.A. in Drama from New York University.



NIKKI E. WALKER (Big B—*Classyass*) just finished the new musical *Buidings* with Starfish Theatreworks at Lincoln Center in New York City. Other **New York Credits** include: *Hard Work Being a Playa* for Young Playwrights Festival and *God, the Crackhouse & Devil* for LaMama and Circel Rep Lab. She performed in *We Miss You Stink* at the Eugene O'Neill Theatre Center, as well as in the feature film *Brooklyn*. Ms. Walker has numerous films, commercials and voiceover credits. She attended LaGuardia High School and received her B.F.A. in Acting from Boston University.



DAVID VAN PELT (Warren—*Mystery of Attraction*) Recently completed the revival of *Rutherford and Son*, at the Mint Theater Company, directed by Richard Corley. **Other credits** include *Lee Blessing's Cobb*, at the Lucille Lortel Theatre, *Zona*, *the Ghost of Greenbrier* at the Hudson Guild; *Girl's Town*, at the Actors Playhouse; and *Romulus Linney's* at the International Ibsen Festival in Oslo. In New York, David has worked with Signature, Currican, Next Stage, the Flock, Circle Rep and Abingdon Theatre. Regionally with Pittsburgh Public, Huntington, Appalachian Summer Festival, Playwrights Theatre of New Jersey, Long Wharf, Denver Center, and the Globe. David made his professional debut as Pfc. Downey in the National Broadway Tour of *A Few Good Men*. He is a graduate of the North Carolina School of the Arts.

SITI COMPANY

SITI Company, celebrating its tenth anniversary, is an ensemble-based theater company based in New York City. The company's mission is to create new works for the theater, to perform and tour these productions nationally and internationally, to provide ongoing training for young theater professionals, and to foster opportunities for cultural exchange with theater professionals and audiences from all over the world.

YOUNG ACTORS

H.J. ADAMS (Denny—*a.m. Sunday*) makes his Actors Theatre debut in *a.m. Sunday*. **Additional Credits:** *Daniel Boone*, *Children of Eden*, *Shenandoah* at Clarksville's Derby Dinner Playhouse, *Peter Pan* and *The Nutcracker* with Louisville Ballet, and *Susannah* with University of Louisville Opera Chorus. Mr. Adams is a seventh grader at a public middle school in Louisville.

LAURA MASTERSON (Vickie—*The Mystery of Attraction*) has been a lover of the theatre all her life. She is excited to be making her professional stage debut at the Humana Festival. She is currently in the ninth grade at Collegiate School and has studied acting with Larry Cervi in Pittsburgh and with Walden Theatre in Louisville.

ALAINA MILLS (Dot—*Finer Noble Gases*) is delighted to return to Actors after her debut in *A Christmas Carol*. She has appeared with Music Theatre Louisville in *The Sound of Music*, *Annie*, Iroquois Ampitheater's 60th Anniversary and Broadway Under the Stars. She was also Clara for two seasons in Louisville Ballet's *The Nutcracker*, Gladys in Stage One's *The Best Christmas Pageant Ever* and Asia in Pleiades Theatre's *Mrs. Wiggs of the Cabbage Patch*. She has done various commercials and voice-overs. Ms. Mills attends St. Lawrence School.

APPRENTICE COMPANY

STACY L. MAYER (Christina—*Nightswim*) **Regional Theatre:** *Just So and Other Stories*, *Three Hands Clapping*. **Chicago Theatre:** *Dinner for Six*, *A Midsummer Night's Dream*, *Lysistrata*, *The Libation Bearers*, *Ella Enchanted*, *The Odd Couple*. **Outdoor Drama:** *Romeo & Juliet*, *The Reach of Song*. **Additional Credits:** The University of Michigan B.F.A., Second City, Moscow Art Theatre, S.A.F.D., Y.P.A.S.

KATE UMSTATTER (Rosie—*Nightswim*) was most recently seen in *Hay Fever*. Also at Actors: Miss Wells in *Dracula* and Sneezy in *Once Upon a Story*. **New York Credits:** *Tough!* (also co-producer), at the American Theatre of Actors in New York, various readings with The New Dramatists, Soho Rep and The New Group. **Additional Credits:** B.S., Northwestern University.

*Build it Best with
Boland Maloney
Since 1937*

2 0 0 1 - 2 0 0 2

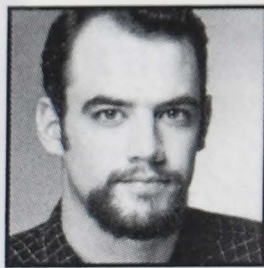
APPRENTICE & INTERN COMPANY



Colette Beauvais



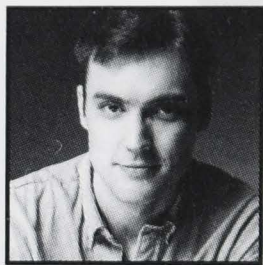
Joey Belmaggio



Matt Bridges



Camilla
Busnovetsky



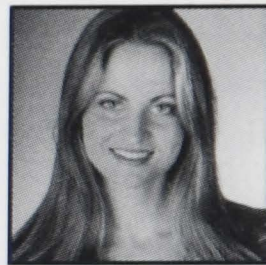
Ryan Clardy



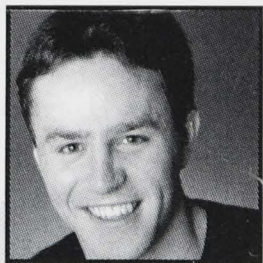
Ellie Clark



Catherine Fannin



Kristi Funk



Jake Goodman



Amy Guillory



Chris Hartman



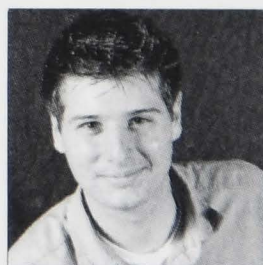
Christopher Illing



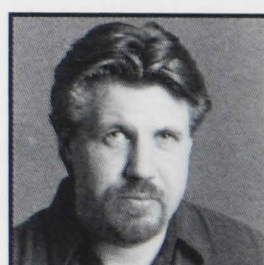
Barbara Lanciers



Paula Langsam



Anthony Luciano



Alan Malone



Stacy L. Mayer



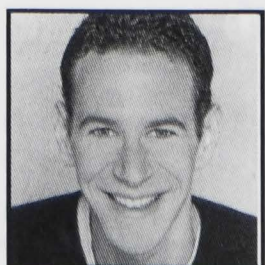
Elisa Morrison



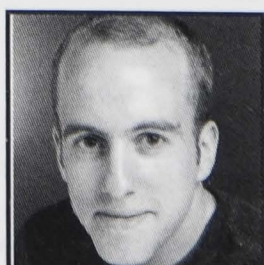
Carrie Nutt



Melanie
Rademaker



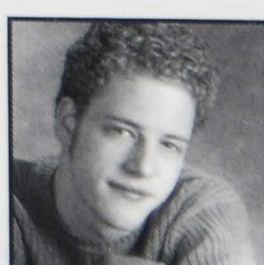
Dave Secor



Donovan
Sherman



Robert Lee
Simmons



Colin Sullivan



Kate Umstatter



Nancy Vitale

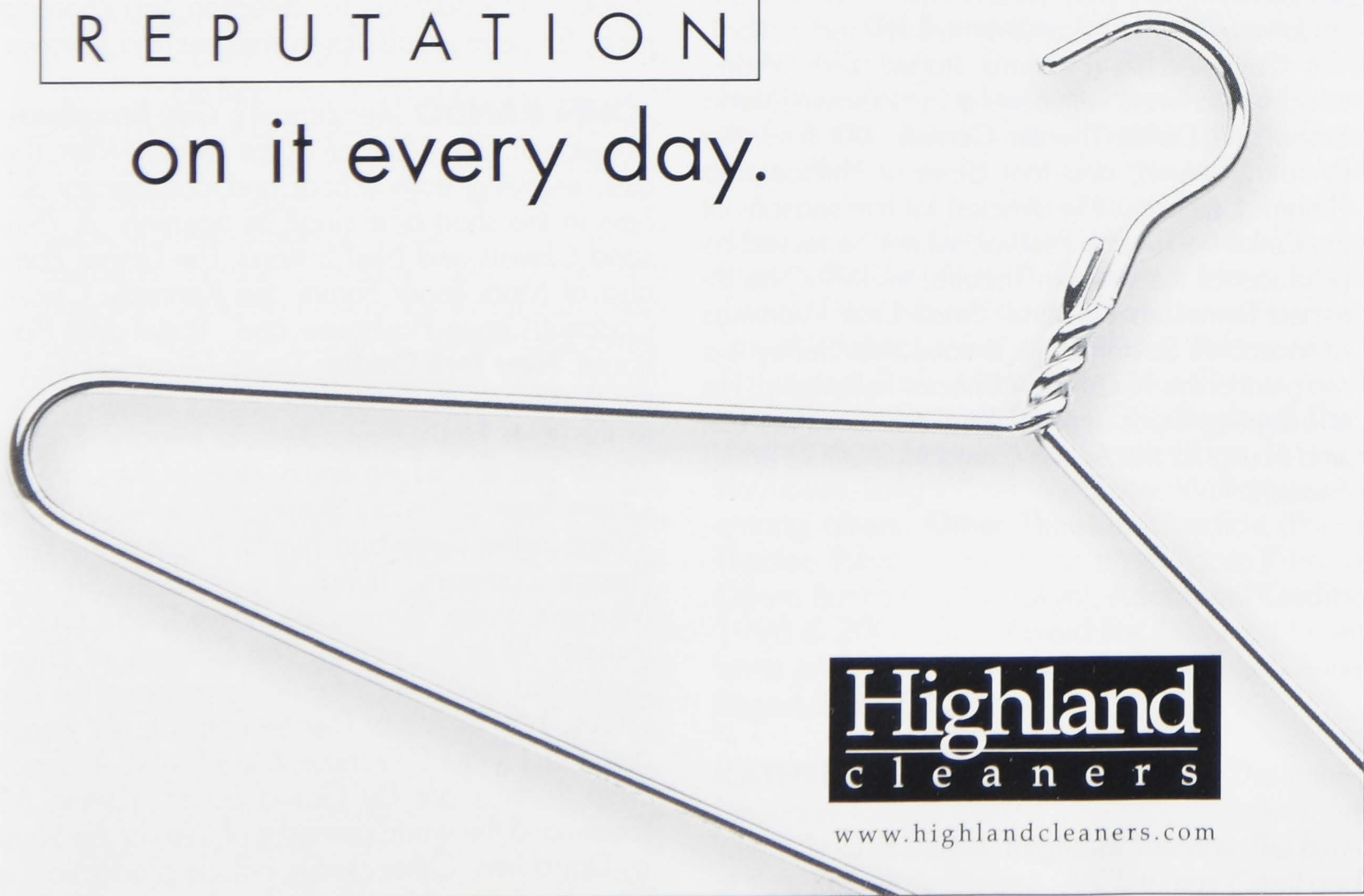


Lindsey White



Tom Wooldridge

We hang our
REPUTATION
on it every day.



Highland
cleaners

www.highlandcleaners.com

DIRECTION AND DESIGN

GUEST DIRECTORS

ANNE BOGART (*Score*) Ms. Bogart is the artistic director of SITI Company. Recent productions with SITI include *Hay Fever* by Noel Coward (Actors Theatre), *Lilith* (New York City Opera), *bobrauschenbergamerica* (Actors/ 25th Humana Festival), *Room* (Wexner Center and City Theatre); *War of the Worlds* (Actors/ 24th Humana Festival, Edinburgh International Festival and BAM's Next Wave Festival); *Bob* (Wexner Center for the Arts/SITI); *Culture of Desire* (a co-production of SITI, City Theatre, and Portland Stage Company); *Private Lives* by Noel Coward and *Miss Julie* by August Strindberg (Actors Theatre of Louisville/SITI); and *Alice's Adventures* (Wexner, City Theatre City Stages, SITI); as well as *Small Lives/Big Dreams*, *Going, Going, Gone*, and *The Medium* (SITI). She is the recipient of two Obie Awards, a Bessie Award, and a Guggenheim Fellowship. Ms. Bogart is currently an associate professor at Columbia University.

RICHARD CORLEY (*The Mystery of Attraction*) is the Associate Producing Director of the Acting Company, where he most recently directed *O Pioneers!* His recent play credits include *Incommunicado* with Tom Aldredge (Drama Desk nomination), *The Cover of Life* (Hartford Stage), *Dirty Work*, which he co-wrote with novelist Larry Brown (Arena Stage and Dallas Theater Center), *XXX Love Act* (Magic Theater), and four plays at Philadelphia Theatre Company. He directed for five seasons at the Berkshire Theatre Festival, where he served as producer of the Unicorn Theatre. In 1997, he directed Tennessee Williams' *Small Craft Warnings* at Moscow's Sovremennik Theatre. Mr. Corley is a recipient of the TCG/NEA Director Fellowship. He is adapting Studs Terkel's *American Dreams: Lost and Found* for the Acting Company's 2002-2003 Season.

MICHAEL JOHN GARCÉS (*Finer Noble Gases*)
At Actors: *When the Sea Drowns in Sand* by Eduardo Machado (Humana 2001); subsequently produced at the Cherry Lane in NYC under the title *Havana is Waiting*. **Regional Theatre:** *A Bicycle Country* by Nilo Cruz and *Praying With the Enemy* by Luis Satiero (Coconut Grove Playhouse) and two seasons at the O'Neill Playwrights Conference. **Off-Broadway:** *Force Continuum* by Kia Corthron (Atlantic); *The Passion of Frida Kahlo* by Dolores Sendler (Directors Company); *King Without a Castle* by Candido Tirado (Puerto Rican Traveling Theatre); *La proxima parada* by Carmen Rivera (Repertorio Espanol); and Lorca's *As Five Years Pass* and *Forever In My Heart* by Osca Colon (INTAR). Solo performance: *aqua ardiente* (American Place Theatre). He is the recipient TCG New Generations Program Grant.

RAJENDRA RAMOON MAHARAJ (*Assistant-a.m. Sunday/Director-Classyass/Nightswim*) was hailed in the *New York Times*, as "One of the most talented young theater directors in New York." He is a recipient of NEA/TCG Directors Grant. He has worked at New Federal Theatre, HERE, Chelsea Playhouse, LaMama, Gene Frankel, Second Stage, Ensemble Studio Theatre, Lark Theatre. He assisted on *A Christmas Carol* on Broadway. He is a member of Lincoln Center Directors Lab and SSDG. He is director of the musical theater wing at New Federal Theatre, recipient of Van Lier Directing Fellowship. Rajendra is a four-time recipient of the Audelco Award for Excellence in Black Theatre Off-Broadway for direction and choreography for the musicals *Damn Yankees* and *Jamaica*.

JOHN RANDO (*Rembrandt's Gift*) **Broadway:** *Urinetown! (The Musical)* at the Henry Miller Theatre, enjoying both critical and commercial success in the short time since its opening. *A Thousand Clowns* and Neil Simon's *The Dinner Party*, also at Mark Taper Forum, the Kennedy Center, Coconut Grove Playhouse and Paper Mill Playhouse. **New York Credits:** *Do Re Mi* and *Strike Up the Band* for City Center Encores!; *Mere Mortals* at the John Houseman; *Ancient History*, *English Made Simple* and *An Empty Plate in the Café Du Grand Bouef* at Primary Stages; *The Venetian Twins*, *When Ladies Battle* and *Twelfth Night* at the Pearl Theatre Company; *Things You Shouldn't Say Past Midnight* at the Promenade. West Coast Credits include: *All in the Timing*, *The Comedy of Errors*, *Sylvia* and *A Moon for the Misbegotten* at the Old Globe. For Berkshire Theatre Festival, Mr. Rando directed *13 Rue D L'Amour*, *Mad Forest*, *An Empty Plate in the Café Du Grand Bouef*, *Visiting Mr. Green* and the world premiere of *Lives of the Saints* by David Ives. Other credits include productions at Cleveland Play House, Studio Arena in Buffalo, Philadelphia Theatre Company, Playmakers Rep in North Carolina, Syracuse Stage and Portland Stage

Company. He was a Drama League directing fellow and holds an M.F.A. from UCLA.

RUSSELL VANDENBROUCKE (Director-Snapshot) staged such plays as *Philoctetes of Sophocles*, *Fires in the Mirror*, *Valley Song*, *Betrayal*, *Hedda Gabler*, and world premieres includes Arnold Wester's *Three Women Talking* (also radio) and Martha Boesing's *My Other Heart* at Chicago's North Light Theatre. His most recent production was *Proof*. Mr. Vandenbroucke became active with the Sundance Playwright's Lab at its inception and directed *The Kentucky Cycle* there before it won the Pulitzer. Mr. Vandenbroucke is the author of *Feiffer's America* and *Eleanor: In Her Own Words*, from the writings of Eleanor Roosevelt, which won a Los Angeles Emmy and was broadcast on "American Playhouse." His play, *Atomic Bombers*, commemorated the 50th anniversary of Hiroshima and opened Northlight's permanent home. *Holiday Memories*, from two Truman Capote stories, is produced annually. Books include *Truths the Hand Can Touch: The Theatre of Athol Fugard*, *Contemporary Australian Plays* (editor), and *The Theatre Quotation Book: A Treasury of Insights and Insults*—just published and available in the Actors lobby. He is Professor and chair of Theatre Arts at the University of Louisville.

RESIDENT DIRECTORS

TIMOTHY DOUGLAS (a.m. Sunday) most recently directed *The Piano Lesson* for Actors. Prior to that, he directed *Mules* for Downstage (New Zealand), *In the Blood* for The Guthrie Theater, *Portia Coughlin* and *The Cripple of Inishmaan* for Pittsburgh Irish & Classical Theatre, *Blues for an Alabama Sky* for Syracuse Stage and *LA: X* for ASK Theatre Projects. Other directing credits include *Venice Crossroads Theatre Company*, *Three Sisters* and *Insurrection: Holding History Toi Whakaari* (New Zealand), *Raised in Captivity* (American Conservatory Theater), *Valley Song* (Berkeley Rep), *Bocon!* (Mark Taper Forum), *Shakespeare's R & J* and *A Raisin in the Sun* at Pittsburgh's City Theatre, *The Last Orbit of Billy Mars* (Woolly Mammoth Theatre Company), and *The Game of Love and Chance* San Jose Rep. He was an NEA/TCG directing fellow during which time he served as a Resident Director at New Dramatists as well as Assistant Stage Director on Handel's *Rodelinda* Virginia Opera. In addition, he served as Director in Residence at the Mark Taper Forum in Los Angeles under an Andrew W. Mellon/Center Theater Group Fellowship. Other directing credits include projects for the Folger Shakespeare Library *Richard III*, Illinois Rep Joe Turner's *Come and Gone*, O'Neill National Playwright's Conference, New York Shakespeare Festival, South Coast Repertory, Denver Center Theatre Company, Magic Theatre and New York Theatre Workshop. As an actor he has

performed regionally, off-Broadway and on television. As a Linklater-designated voice instructor he has served on the faculties of American Conservatory Theater, Shakespeare & Company, National Theatre Conservatory, University of Southern California, the Theatre School at DePaul University and New Zealand Drama School. Mr. Douglas is a graduate of the Yale School of Drama.

MARC MASTERSON (*Limonade Tous les Jours*)—Please see Executive bios page 39.

SULLIVAN CANADAY WHITE (Bake Off) is director of Actors' Apprentice/Intern Company. **At Actors:** *Baby with the Bathwater*, Director of *80 Proof*, *Back Story*, *Suicide in Bb*, *The Maderati*, *Picasso at the Lapin Agile*, *Reckless*, *Wilderisms*, *In the Land of Bumbley Boo*, *Spooky Spectacular*, *Wide Awake/Fast Awake*, *Wonderland*, *Night Visits*, *Private Practice*. **Other Theatre:** *The Lion in Winter*, *Glengarry Glen Ross*, *Six Degrees of Separation*, *The Sum of Us*, *Eleemosynary*, *Lloyd's Prayer*, *A Shayna Maidel*, *Betrayal*.

GUEST DESIGNERS

NEIL PATEL (Scenic Designer—Score) **At Actors:** *Hay Fever*, *War of the Worlds*, *The Adding Machine*, *Private Lives* (all directed by Anne Bogart), *Hair*, *Peter Pan*. Other work with SITi and Ms. Bogart includes: *Cabin Pressure*, *BOB*, *Culture of Desire*, *Room*. **Broadway:** *Sideman* (Broadway & West End). **Off-Broadway:** *Glimmer*, *Glimmer and Shine* (Manhattan Theatre Club), *Dinner With Friends* (Variety Arts Theater), *Hurrah at Last*, *Arms and the Man* (Roundabout Theatre), *Lobster Alice*, *Mud, River, Stone* (Playwrights Horizons), *Richard II & III*, *Macbeth*, *The Changeling* (TFANA), *Anadarko*, *The Grey Zone* (MCC Theatre), *Lydie Breeze*, *Resident Alien*, *A Question of Mercy*, *Quills* (Drama Desk Nomination), *Slavs!* (New York Theatre Workshop), *Henry V*, *Othello*, *References to Salvador Dali Make Me Hot* (New York Shakespeare Festival), *Race* (CSC). **Regional Theatre:** Guthrie, Steppenwolf, Center Stage, La Jolla Playhouse, Long Wharf, McCarter, Williamstown, among others. **Other Theatre:** *Candide* (Parco Theater, Tokyo) and *Le Nozze de Figaro* (Nikikai Opera Bunka Kaikan, Tokyo). **Additional Credits:** 1996 & 2001 Obie Award For Sustained Excellence and 2000 Eddy Award for work with Anne Bogart and SITi Company.

KATHERINE HAMPTON (Costume Designer—*Limonade Tous les Jours*) is a recent graduate of the Yale School of Drama. **Regional Theatre:** *The Birds* at Yale Repertory Theatre, *A Christmas Carol* and *Wizard of Oz* at Actors, and *Pericles*, *Measure for Measure* and *Mad Forest* at Yale Drama. New York Credits: *Bloody Poetry* at Synapse Theatre Co., *Sad Hotel* and *Come Back Little Sheba* at Lucille

Lortel's White Barn Theatre, *The Holy Mother of Hadley* N.Y., for the New Georges Theatre Co., and *Childhood* at Lincoln Centre Director's lab.

JANE GREENWOOD (Costume Designer—*Rembrandt's Gift*) **Broadway:** Over 70 shows, including *Major Barbara*, *The Dinner Party*, James Joyce's *The Dead*, *The Scarlet Pimpernel*, *The Last Night of Ballyhoo*, *An American Daughter*, *Master Class*, *The Heiress*, *Passion*, *The Sisters Rosenweig*, *Plenty*, *The Ballad of the Sand Café*, *The Prime of Miss Jean Brodie*, *Same Time Next Year*, Burton's *Hamlet*. **Off-Broadway:** *Vita and Virginia*, *Sylvia*, *The Lisbon Traviata*, *Lips Together*, *Teeth Apart*. **Film:** *Arthur*, *The Four Seasons*, *Glengarry Glen Ross*. **Additional Credits:** Martha Clark's *The Garden of Earthly Delights*, Metropolitan Opera's *The Great Gatsby* (world premiere), Chicago Lyric Opera's *Nabucco*. Awards: Numerous awards including 12 Tony nominations. Yale School of Drama faculty.

JAMES SCHUETTE (Costume Designer—Score) Recent work includes: *Lady in the Dark* (Prince Music Theatre), *Mother Courage and her Children* (Steppenwolf), *Big Love* (Long Wharf, Berkeley Rep., Goodman) and *Lilith* (New York City Opera). His work with SITI Company includes: *bobrauschenbergamerica* (sets and costumes), *War of the Worlds*, *Cabin Pressure*, *Room*, *Bob*, *Alice's Adventures*, *Private Lives*, and *The Adding Machine*. Other work includes *Floyd Collins* (Old Globe, Goodman, Prince); *The Berlin Circle*, *Time to Burn*, *Space* (Steppenwolf); *Saturn Returns*, *The Treatment*, *The Chang Fragments*, *Insurrection: Holding History*, *Book of the Dead* (Public); *The Seven Deadly Sins* (NYCO); *Transatlantic* (Minnesota Opera); *La Bohème* (Glimmerglass Opera and NYCO); *Carmen* (Santa Fe Opera); Laurie Anderson's *Songs and Stories from Moby Dick* (BAM Next Wave Festival) and work at Mark Taper Forum, New York Theatre Workshop, and En Garde Arts. He is a graduate of Yale School of Drama.

CHRISTAL WEATHERLY (Costume Designer—*The Mystery of Attraction/Finer Noble Gases/a.m. Sunday*) Ms. Weatherly's recent credits include: *The Cosmonaut's Last Message* (La Jolla Playhouse) and the world premieres of Jessica Goldberg's *Good Thing* (Mark Taper) and Mark Medoff's *Road To A Revolution* (Deaf West Theatre). Other credits include: *Fen* (Open Fist Theatre Co.), *The Chairs* (Sledgehammer Theatre), *The Last Days of Pompeii* (Eleanor Antin's Paranod Productions), and a handful of designs from the University of California, San Diego, including *Boesman and Lena*, (director Athol Fugard), *Twelfth Night*, Naomi Izuka's *Polaroid Stories*, *The Colored Museum* and Julia Edward's *fun house style*.

CHRISTOPHER AKERLIND (Lighting Designer—Score) has designed over 280 productions at theater and opera companies in the US and around the world. His work with Anne Bogart includes the premiere of Deborah Drattell's *Lilith* for New York City Opera, *Hay Fever* at Actors and the SITI Company production of *Room*. NY credits include the premieres of Caryl Churchill's *The Skryker* and *Mad Forest*, Craig Lucas' *The Dying Gaul*, Tony Kushner's *Slavs!*, Charles Busch's *The Tale of the Allergist's Wife*, Howard Korder's *The Lights* and August Wilson's *Seven Guitars* for which he received a Tony Award nomination. Recent international work includes *Cymbeline* for the RSC at Stratford-upon-Avon, *The Tale of Genji* at the Nissay Theater in Tokyo and *Boris Godunov* for the Hamburgische Staatsoper. His extensive credits in opera include projects at the New York City, Santa Fe, Minnesota, Boston Lyric and Dallas Operas, as well as over 44 productions for Opera Theater of Saint Louis where he is Resident Designer. Regional theater work has been seen at A.C.T., Berkeley Rep, the Goodman, the Guthrie, Hartford Stage, Intiman Theater, La Jolla Playhouse, Long Wharf, the McCarter, Seattle Rep and recently, *Enrico IV* at A.R.T. He is the recipient of the Obie Award for Sustained Excellence in Lighting Design.

TIM SATERNOW (Lighting Designer—*Limonade Tous les Jours/Rembrandt's Gift*) is a set and lighting designer. **Regional Theatre:** Seattle Rep, Berkshire Theatre Festival, PlayMakers Rep, The Empty Space, The Wilma Theatre, Paper Mill Playhouse, Arden Theatre, Williamstown Theatre Festival, Intiman, Phoenix Theatre, Arkansas Rep, Eugene O'Neill Theater Center, Connecticut Opera, Connecticut Repertory Theatre, Yale Repertory Theatre. **Broadway:** Lighting Design for *SQUONK* at the Helen Hayes Theatre, NY. **Film:** *The Piano Lesson* for the Hallmark Hall of Fame, directed by Lloyd Richards, who received an Emmy nomination for his Art Direction. Currently, Mr. Saternow heads the Scene Design program at the University of Connecticut and is a member of the United Scenic Artists, Local 829, NY.

MARTIN DESJARDINS (Sound Designer—*The Mystery of Attraction*) has designed and composed for regional, Off-Broadway, and international theatre. Recent international work includes the original score for R.E.M. at FINN, Harstad, Norway, a solo dance piece performed by a member of the Norwegian National Ballet. The resident sound Designer with Actors Theatre of Louisville from 1994-1998, and again from 1999-2001, his designs also include work for The Shakespeare Theatre in Washington, DC, Williamstown Theatre Festival, Playmaker's Repertory Theatre, Dallas Theater Center, Yale Repertory Theatre, and others. Off-Broadway credits include *Below the Belt* with Robert Sean Leonard, and *Gunshy*. Other New York design credits include work with The Wooster Group, including the recent *North Atlantic*. Compositional work includes complete scores for *Death of a Salesman* with Judd Hirsch in Toronto, and *Skylight*, *Wit*, and *Dracula* with Actors. His designs have been heard at international festivals, including the Holland Festival, Festival d'Automne à Paris, Edinburgh Fringe Festival, Scotland, Kulturfest in Weimar, Germany, and the Melbourne Festival, Australia. Mr. Desjardins is a graduate of Yale School of Drama.

KURT B. KELLENBERGER (Sound Designer—*Rembrandt's Gift*) **At Actors:** *Flaming Guns of the Purple Sage*, *Wonderful World*. **Regional Theatre:** *Betty's Summer Vacation*, *Dead End* (Huntington Theatre Co.), *All's Well That Ends Well* (Chicago Shakespeare), *Springtime for Henry* (Studio Arena), *All My Sons* (Roundabout Theatre Co.). **Broadway:** *One Mo' Time*, *Hedda Gabler*, *The Price*. **Off-Broadway:** *Kit Marlowe* (Public Theatre), *The Butterfly Collection*, *Betty's Summer Vacation* (Playwrights' Horizons), *The Last of the Thorntons*, *Letters From Cuba* (Signature Theatre Co.), *Hazelwood Jr. High* (New Group), *That Championship Season*, *A Madhouse in Goa* (Second Stage Theatre), *Lydie Breeze*, *What You Get and What You Expect*, *The Gimmick* (New York Theatre Workshop). **Other Theatre:** Six seasons as Supervising Sound Designer at the Williamstown Theatre Festival.

DARRON L. WEST (Sound Designer—Score) has been a SITI Company member since 1993 and first collaborated with Anne Bogart in 1990 while resident sound designer at Actors Theatre of Louisville. Since joining SITI Company, he has designed every show in the company's repertoire with *BOB* garnering a 1999 Obie Award and Drama Desk nomination for its soundscape. He is a design associate and designed *Usual Suspects* at New York Theatre Workshop, a two-time American Theatre Wing and three-time Drama Desk nominee for sound design, as well as 1997 Princess Grace and 2000 EDDY award winner for his work with SITI Company. Other credits include numerous regional and New York collaborations, including

Philip Glass at Avery Fisher Hall, the original production of *Rent*, and the 1998 Broadway production of *Wait Until Dark*.

VALERIE SULLIVAN FUCHS (Video Designer—*Limonade Tous les Jours*) is a multi-media artist who works with video, sound, video installation and sculpture. She has a M.F.A. in the Time Arts area from the School of the Art Institute of Chicago and a B.Arch from the University of Kentucky. Her work was most recently seen at Actors in *Macbeth*. Her work has been exhibited in Chicago and Louisville including: REFCO Ltd., The Illinois Art Gallery, Contemporary Artist Workshop, and the Betty Rymer, Artswatch and Swanson Cralle. In 1998 she received a generous grant from the Sony Corporation and in December 2001, from the Kentucky Foundation for Women. Currently she is a member of sine::apsis experiments, a group of artists who work with technology based in Chicago. Publications include *Dialogue*, *Leonardo*, MIT's electronic journal, and *Business First*.

RESIDENT DESIGNERS

PAUL OWEN (Scenic Designer—*The Mystery of Attraction*/*Finer Noble Gases*/*Limonade Tous les Jours*/*a.m. Sunday*/*Rembrandt's Gift*/*Bake Off*/*Nightswim*/*Classyass*/*Snapshot*) Now in his 31st season, Mr. Owen has designed all Actors productions (except three) in the 26-year history of the Humana Festival. Mr. Owen has designed lights and costumes for numerous plays in addition to his primary task of designing the environments for the majority of Actors productions; all of Actors international tours; national tours to Baltimore, the Kennedy Center and the Spoleto Festival; seven Kentucky tours. Mr. Owen was essential in planning Actors expansion projects in 1972 and 1994. **Additional Credits:** 1992 Governor's Award in the Arts for artistic achievement. Mr. Owen spent the first 10 years of his career with the Alley Theatre.

JOHN P. WHITE (Costume Designer—*Bake Off*/*Nightswim*/*Classyass*/*Snapshot*) is happy to return to Actors after an eight-year hiatus. While on hiatus, Mr. White was the resident costume designer for Derby Dinner Playhouse in Clarksville. He has designed costumes for the Little Theatre on the Square in Sullivan, IL, Dutch Apple Dinner Theatre in Lancaster, PA, Broadway Palm Dinner Theatre in Naples, FL and Music Theatre of Louisville. Mr. White was also a founding member of the Not Ready for Shakespeare Players at the Clifton Center.

TONY PENNA (Lighting Designer—*The Mystery of Attraction*/*Finer Noble Gases*/*a.m. Sunday*/*Snapshot*) **At Actors:** *Macbeth*, *The Piano Lesson*, *Floyd Collins*, *Dracula*, *Tuna Christmas*, *Jouet*, *The*

Complete Works of William Shakespeare (abridged), *How I Learned to Drive*, *Quake*, *When the Sea Drowns in Sand*, *Description Beggared; or the Allegory of WHITENESS*, *Heaven and Hell* (25th Humana Festival), *Little Shop of Horrors*, *The Lover* and *A Slight Ache*, *Swingtime Canteen*, *Always...* Patsy Cline. **NY Theatre:** *Richard II* (HERE/Eleventh Hour Theatre Co.). **Regional Theatre:** Huntington Theatre Company, Pittsburgh Public Theatre, Buffalo Studio Arena, Center Stage, Phoenix Theatre, Berkshire Theatre Festival. Mr. Penna received his M.F.A. from Boston University's School for the Arts and is on the theatre faculty at Hanover College in Indiana.

PAUL WERNER (Lighting Designer—*Bake Off/Nightswim/Classyass*) is currently the lighting supervisor at Actors. **Lighting Coordinator:** *Avner the Eccentric*, *Dracula*, *A Tuna Christmas* and *A Christmas Carol*. **Lighting Designs:** *Chad Curtiss (Lost Again)* as part of the 25th Humana Festival, *Arabian Nights*, *Divine Fallacy* and *Standard Time* as part of the 24th Humana Festival. In his four years with Actors, he has designed several apprentice showcases, Walden Theatre productions, and Juneteenth Jamboree productions.

COLBERT DAVIS (Sound Designer—*Bake Off, Classyass/Nightswim/Snapshot*) **At Actors:** *Floyd Collins*, *Piano Lesson*, *Hay Fever*. **Other theatre:** *Brother*, Yale Repertory. Mr. Davis received his B.A. from Yale University.

VINCENT OLIVIERI (Sound Designer—*Finer Noble Gases/Limonade Tous les Jours/a.m. Sunday*) Mr. Olivieri has designed extensively along the East Coast prior to coming to Actors this year. His designs include *The Piano Lesson*, *Floyd Collins* and *Dracula* at Actors, *Hay Fever*, *Curse of the Starving Class*, *The Birds* (Yale Repertory Theatre), *A Little Nightmusic*, *Kismet*, *A Midsummer Night's Dream* (Prospect Theater Company), and *Death and the Maiden* (Encore Theater Company). Mr. Olivieri designed the one-man show *Hinton Battle: Largely Live* at the Apollo Theater in Chicago. With the Amaryllis Theatre Company, he designed the sign-language production of *Twelfth Night*. He served as Resident Sound Designer and Composer for the Richmond Shakespeare Festival in Virginia. Mr. Olivieri graduated from Yale School of Drama.

DOC MANNING (Properties Designer—*Finer Noble Gases/a.m. Sunday/Bake Off/Nightswim/Classyass/Snapshot*) is returning for a fifth season at Actors. He was last seen as Tiny Tim at Actors in *A Christmas Carol* in 1980. Since then, he has worked as a scenic carpenter at the Santa Fe Opera, Centre Stage and Actors, and as Props Master at The Joffrey Ballet of Chicago.

MARK WALSTON (Properties Designer—*The Mystery of Attraction/Limonade Tous les Jours/Score/Rembrandt's Gift*) is in his eighth season at Actors and most recently designed props for *Hay Fever*. Other Actors credits include: *Macbeth*, *The Piano Lesson*, *Floyd Collins*, *The Complete Works of Shakespeare (abridged)*, *Flaming Guns of the Purple Sage* (25th Humana Festival); *The Lover and A Slight Ache* (Free Theatre 2001); *Constant Star*; *Sexual Perversity in Chicago* and *The Baltimore Waltz* (2000 Festival of Shorts); *War of the Worlds* (24th Humana Festival); *Hair*; *Aloha, Say the Pretty Girls* and *Life Under 30* (23rd Humana Festival); *Full Gallop*; *Angels in America* and over fifty ten-minute plays. Mr. Walston's other credits as Props Master include: Worcester Foothills Theatre, Maine State Music Theatre and Music Theatre North. He was Props Master for the Boston premiere of *Pump Boys and Dinettes* at The Charles Playhouse, and toured with *Mame* as dresser to Patrice Munsel. A native of Grosse Pointe, MI, Mr. Walston is a graduate of Wagner College in Staten Island, NY.

GUEST PRODUCTION STAFF

CAT DOMIANO (Stage Manager—*a.m. Sunday*) is a resident of New York City where she is the production stage manager for Chicago City Limits, a NYC-based comedy improvisational troupe. **At Actors:** *Dracula*; *Description Beggared; or the Allegory of WHITENESS*. **Regional Theatre:** *'Maid* and *A Visit From the Footbinder* (Lincoln Center); *A Christmas Carol* (North Carolina Shakespeare Festival). **Off-Broadway:** *The Water Children* (Playwrights Horizons); *The Old Settler* (Primary Stages). **Other Theatre:** *Peter and Wendy* (Spoleto Festival USA and The Public Theater); *Venice* (The Juilliard School); *Romeo and Juliet*, *Young Tom Edison* and *The Boxcar Children* (TheatreWorks/USA). **Additional Credits:** M.F.A. from Virginia Tech; Member of the Stage Managers' Association.

ANGELA M. FIGG (Assistant Fight Director—*Rembrandt's Gift*) Originally from Louisville, Ms. Figg is a graduate of Purdue University. Fight Directing credits include: *Tis Pity She's a Whore* and *Servant of Two Masters* at Williamstown Theatre Festival, *Dark Lady of the Sonnets* and *The Women* at the Atlantic Theatre, Disney Cruise Line International, and film project *Realistic Zoo*. Assistant Fight Director: *Martin Guerre*, national tour and Guthrie Theater productions; *Ben Hur the Musical*. Stunt work: *Guiding Light*. Ms. Figg has also been a faculty member at NYU's Atlantic Theatre School of Acting teaching stage combat and assisted at Yale School of Drama.

HEATHER FIELDS (Stage Manager—*Limonade Tous les Jours/Nightswim/Classyass/Bake Off*) returns to Actors for her 4th Humana Festival. **At Ac-**

tors: *Life Under 30*, *Once on this Island*, *Peter Pan*, *Mr. Bundy*, *Let The Big Dog Eat*, *Ali The Gift of the Magi*, *Icarus*, *Only A Bird in A Gilded Cage*, *A Christmas Carol* and *East of Eden*. **Regional Theatre:** *Loot*, *Light up the Sky*, *70 Hill Lane*, *Having Our Say* and *Guitar Lessons: The Springhill Singing Disaster* (La Jolla Playhouse) and *Finian's Rainbow* (Coconut Grove Playhouse). **Broadway:** *A Class Act*. **Off-Broadway:** *A Class Act* (MTC) and *Dragapella*. **Other Theatre:** *Sweeney Todd* starring Patti LuPone, George Hearn and Neil Patrick Harris with the New York Philharmonic, San Francisco Symphony and the Ravinia Festival Orchestra. **Television:** *Sweeney Todd* with the San Francisco Symphony (PBS).

SARAH HODGES (Production Assistant—*a.m. Sunday/Stage Manager—Snapshot*) returns to Actors Theatre for her second Humana Festival. She completed her season-long internship in stage management last year and moved to Minneapolis in July to be an assistant stage manager at the Children's Theatre Company. **At Actors:** *Dracula*, *In the Land of Bumble Boo*, *A Christmas Carol*, *80 Proof*, *Constant Star*, *bobrauschenbergamerica*, *Chad Curtiss Lost Again*, *Solo Mio*, *How I Learned to Drive*, *Compleat Wrks*, *Alabama Rain*, *Baby with the Bathwater*, *Spring*, *Tracers*. **Children's Theatre Company:** *Charlie and the Chocolate Factory*, *The Beggars' Strike*.

LILENE MANSELL (Dialect Coach—*Limonade Tous les Jours*) Recent Broadway credits include: *The Swedish Bombshell* in *The Producers*, the American cast of *Stones In His Pockets*, *The Iceman Cometh* (with Kevin Spacey) and *Master Class* with Zoe Caldwell. Recent Films include: *The Count of Monte Cristo*, *The Sixth Sense*, *The Thin Red Line* and the upcoming *Divine Secrets of the Ya-Ya Sisterhood*. Ms. Mansell has taught in the U.S., Canada, London and co-authored with Tim Monich the new edition of Edith Skinner's *Speak with Distinction*.

JUSTIN MCDANIEL (Production Assistant—*Finer Noble Gases*) At Actors he began as stage management intern for *Floyd Collins*, *The Piano Lesson* and *A Christmas Carol*. Prior to Actors, Mr. McDaniel served as Technical Director for the Totem Pole Playhouse and as assistant stage manager for Connecticut Opera Association.

ELIZABETH MOREAU (Stage Manager—*Score*) Company Stage Manager for SITI. **At Actors:** *Hay Fever*, *bobrauschenbergamerica* (2001 Humana Festival). SITI Company credits include: *War of the Worlds—The Radio Play*, *Ai The Radio Play* (Fall 2001 National Tour), *Room* (On the Boards, Seattle), *Bob* (B.I.T.E. Festival, London), *Cabin Pressure* (Israel Festival), *War of the Worlds* (Edison Theatre, St. Louis). **Broadway:** *Dirty Blonde*, *Bells*

are Ringing, *Getting and Spending*. **Off-Broadway:** *Kit Marlowe*, *In the Blood* (The Public), *Avow* (Century Center), *Lydie Breeze*, *What You Get and What You Expect*, (New York Theatre Workshop), *Dream True*, *Mercy* (Vineyard), *Red*, *The Memory of Water* (Manhattan Theatre Company).

KIMCHERIE LLOYD (Music Supervisor—*Limonade Tous les Jours*)

LESLIE K. OBERHAUSEN (Assistant Stage Manager—*The Mystery of Attraction*) is happy to return to the Actors Theatre Stage Management team since finishing her stage management internship in 1984. **Regional Theatre:** Production Stage Manager for eleven seasons with Stage One: The Louisville Children's Theatre. **Off-Broadway:** *The Great Gilly Hopkins* (The New Victory Theatre). **Film:** *Frankenstein* and *Pinocchio* with Globalstage Productions. **Additional Credits:** Production Stage Manager at Derby Dinner Playhouse for five seasons, Drama Director at Eastern High School and East Washington Elementary School in Pekin, Indiana since 2000.

NANCY PITTELMAN (Production Assistant—*Rembrandt's Gift*) is delighted to be retuning for her third production at Actors. She comes to Actors from the Coconut Grove Playhouse in Miami, FL. Ms. Pittelman is a graduate from the University of Miami where she earned a B.F.A. in Stage Management.

RICK SORDELET (Fight Director—*Rembrandt's Gift*) **Broadway:** Disney's *Lion King*, *Beauty and the Beast*, (19 world wide productions), *Aida*, *The Scarlet Pimpernel*, *Titanic*, *True West*, *Urinetown*, *Into the Woods*, *Wait Until Dark*, *The Smell of the Kill*. **National Tours:** *Martin Guerre*, *I'm Not in Rapporport*, *Ben Hur*, *Sunset Boulevard*. **Off Broadway:** *Reefer Madness* and *LA*, *The Wild Party* and *Fuddy Meers* at MTC, *The Dead Eye Boy* and *The Glory of Living* for MCC, *Othello* for the Public, *Hamlet* for Washington Shakespeare Theater Television: Stunt Coordinator for *The Guiding Light*, *As the World Turns*, *Another World*, for ABC, CBS, NBC. **Film:** *Hamlet* starring Campbell Scott and Blair Brown, *First Jedi* a CD-ROM for George Lucas. Instructor: Yale School of Drama and The Neighborhood Playhouse. Company member of The Drama Department, Board member for the New Jersey Shakespeare Festival. Married to Kathleen Kelly with three beautiful children, Kaelan, Christian and Collin.

ERIN TATGE (Production Assistant – *Finer Noble Gases*) was a Stage Management Intern at Actors last season. She was most recently the Assistant Stage Manager for *Dragonwings* at the Children's Theatre Company in Minneapolis, as well as Associate Company Manager. **At Actors:** *Wuthering! Heights! The! Musical!*, *Wit*, *A Christmas Carol*, *Little Shop of Horrors*, *Description Beggard: Or the Allegory of WHITENESS*, *Heaven and Hell*, *The Lover and A Slight Ache*, *How I Learned to Drive*, *Complete Works of Shakespeare: Abridged*, *In the Land of Bumbley Boo*, *80 Proof*, *Solo Mio*, *Alabama Rain*, *Baby with the Bathwater*. **Additional Credits:** B.A. with honors in Theatre Arts from Earlham College.

CHARLES M. TURNER, III (Stage Manager—*Finer Noble Gases*) returns to Louisville for his sixth season with Actors. **At Actors (selected):** *When the Sea Drowns in Sand*, *Chad Curtis*, *Lost Again*, *Tape*, *Standard Time*, *Arabian Nights*, *Touch*, *Y2K*, *Full Gallop*, *A Christmas Carol*, *Greater Tuna*, *Acorn*, *Like Totally Weird*, *Resident Alien*, *The Wizard of Oz*, *Hot 'n' Cole*, *Polaroid Stories*, *Icarus*, *Miss Julie* and *Gift of the Magi*. **International:** London's Players' Theatre and Staatstheater Darmstadt, Darmstadt Germany. **Off-Broadway:** Manhattan Ensemble Theater, New York Theatre Workshop, York Theatre Company, HERE and Manhattan Theatre Club. **Regional Theatre:** Pittsburgh's City Theatre, Theatre at Lime Kiln, North Carolina Shakespeare Festival and Mount Holyoke Summer Theatre. **Additional Credits:** PSM for the Juilliard School—Drama Division 1999-2000 academic year and Stage Manager for the New York Philharmonic's *Sweeney Todd* starring Patti LuPone and George Hearn.

RESIDENT PRODUCTION STAFF

JOHN BARNETT (Technical Director) Mr. Barnett returns to Kentucky after serving as the Technical Director for the Jenny Wiley Theatre in Prestonsburg from 1996-1998. A graduate of Florida School for the Arts, he served as the Technical Director for Phoenix Theatre in Phoenix, AZ and the Daytona Beach Playhouse in Daytona Beach, Florida as well as the Lighting Director for the Nebraska Theatre Caravan. Most recently, Mr. Barnett has held the position of Assistant Technical Director with A Contemporary Theatre in Seattle, WA. For the past three years he has worked on a wide range of productions varying from the World Premiere of the Philip Glass' Opera, *In the Penal Colony*, to a production with The Flying Karamazov Brothers and MIT's Media Lab.

MARGRET FENSKE (Costume Shop Manager) is in her fifth season with Actors. Ms. Fenske is a

native of Kansas, where she taught K-12 vocal music for 20 years while participating in summer stock theatre. She has worked in costumes with Wichita Music Theatre, Glimmerglass Opera and Cincinnati Playhouse in the Park. She has sung with Sweet Adelines International since 1976 and is an arranger, vocal coach, regional music faculty member, and a member of Louisville's Pride of Kentucky Chorus. Favorite ATL show builds have included: *Always...Patsy Cline*, *Peter Pan*, *Heartbreak House* and *Constant Star*.

DEBRA A. FREEMAN (Assistant Stage Manager—*Limonade Tous Les Jours/Score/Bake Off/Classyass/Nightswim*) joins Actors once again for *Macbeth*. Ms. Freeman recently traveled from Connecticut where she spends her summers working as the Production Stage Manager for The River Repertory. **At Actors:** *A Christmas Carol*, *The Piano Lesson*, *Floyd Collins*, *Description Beggard; Or the Allegory of WHITENESS* (25th Humana Festival). **Regional Theatre:** Long Wharf Theatre, Production Stage Manager for the River Rep. **Other Theatre:** Tour stage manager for Cleveland Signstage Theatre, John Michael Kohler Arts Center. Production Stage Manager for summer season at the Firefly Festival. In addition to stage managing, Ms. Freeman has also worked as a Properties Designer/coordinator for various theatres. **Additional Credits:** B.A. from Indiana University, South Bend.

ALYSSA HOGGATT (Stage Manager—*Rembrandt's Gift*) **At Actors:** *Macbeth*, *Complete Works of William Shakespeare* (abridged) *Wonderful World* (25th Humana Festival), *Little Shop of Horrors*, *A Tuna Christmas*, *Dracula*, *Swingtime Canteen*, *Big Love* (24th Humana Festival) and *Life Under 30* (23rd Humana Festival). **Kentucky Opera:** *La Boheme* and *Susannah*. **Regional Theatre:** New Mexico Rep, Center Stage, Long Wharf Theatre, Woolly Mammoth Theatre, Cherry County Playhouse. **Off-Broadway:** Manhattan Theatre Club. **Dance:** The Joffrey Ballet of Chicago, Southern Ballet Theatre. **Opera:** New Jersey Opera Festival, Opera Carolina, Lyric Opera of Kansas City, Baltimore Opera.

PAUL MILLS HOLMES (Production Stage Manager—*The Mystery of Attraction*) is in his tenth season at Actors. **At Actors:** *Hay Fever*, *The Piano Lesson*, *Floyd Collins*, *Flaming Guns of the Purple Sage* (25th Humana Festival), *Constant Star*, *A Christmas Carol*, *Wit*, *Hair*, *Nixon's Nixon*, *Once on this Island*, *Radio Gals*, *The Trestle at Pope Lick Creek*, *Private Lives*, *Wilder Rediscovered*, *The Wizard of Oz*, *Tough Choices for the New Century* and *July 7, 1994; Corpse!*, *The Adding Machine*, *Keely and Du* and others. **Regional Theatre:** *The Glass Menagerie*, *Betsey Brown*, *Indians and The Three Sisters* at the McCarter Theatre. **Broadway:** *Les Liaisons Dangereuses*, *Smile and*

Oh! Calcutta! **Off-Broadway:** *Steel Magnolias*, *Little Shop of Horrors*, *Oil City Symphony*. **Additional Credits:** Directed *Little Shop of Horrors* in Tel Aviv and Tokyo; 26 seasons at Pennsylvania's Totem Pole Playhouse.

FRAZIER W. MARSH (Production Manager) in his 25th year at Actors, is responsible for coordinating the technical aspects of all Actors Theatre productions. In addition, Mr. Marsh's directing credits include: *A Christmas Carol*, *Always ... Patsy Cline*, *Stars* (21st Humana Festival), *East of Eden*, *Contract with Jackie* (20th Humana Festival), *Dracula*, *I Hate Hamlet*, *The Last Time We Saw Her* (18th Humana Festival), *Sherlock Holmes*, *The Gift of the Magi*, *The Passion of Dracula*, *The Heidi Chronicles*, *Nightside* (15th Humana Festival) and *The Cocktail Hour*. **Premieres:** *Anton*, *Himself*, *Water Hole*, *In a Northern Landscape*, *Mine*, *Bartok as a Dog*, *Courtship*, *Clara's Play* and several one-acts included in Actors' international tours to Czechoslovakia, Greece, Bulgaria and Romania.

DRAMATURGS

TIMOTHY DOUGLAS (*Classyass*) Please see page 24 for biography.

STEPHEN MOULDS (*Score/Bake Off/Nightswim*) returns to Actors after serving as the literary associate in the summer of 2001 and as a literary management intern during the 2000-01 season. Dramaturgy credits include: *The Complete Works of William Shakespeare (Abridged)*; and assistant dramaturgy on *When the Sea Drowns in Sand*; *Description Beggared*; or *the Allegory of WHITENESS*; and *Chad Curtiss, Lost Again* (25th Humana Festival of New American Plays). He is currently a literary assistant at MCC Theater. He co-edited the collection *30 Ten-Minute Plays* for 3 Actors. He is a graduate of Vanderbilt University.

TANYA PALMER (*The Mystery of Attraction/Limonade Tous Les Jours/Rembrandt's Gift/Snapshot*) is the Literary Manager at Actors Theatre. For Actors, she has dramaturged *Jouët* by Allan Robertson and *Hay Fever* by Noel Coward, as well as *bobrauschenbergamerica* by Charles L. Mee and *Wonderful World* by Richard Dresser, both part of the 2001 Humana Festival of New American Plays. During the 1994-95 season, Ms. Palmer was a Literary Management intern, and served as the assistant dramaturg on a number of productions. As a playwright, her work has been produced at Actors, The Hangar Theatre, Solar Stage, The Montreal Fringe Festival and has been workshopped at The Harbourfront Centre, HERE and The Wilton Project. She was one of the writers for *Backstory* in the 2000 Humana Festival and *Spring*, her adaptation of *Spring's Awakening* was

produced as part of the 2000-2001 Apprentice Company's Festival of Shorts.

AMY WEGENER (Dramaturg—*Finer Noble Gases/a.m. Sunday/Snapshot*) is the dramaturg/director of new play development at Actors, where she has been on staff since 1997. Dramaturgy credits include: *Quake*, *Description Beggared*; or *the Allegory of WHITENESS*, *Heaven and Hell (On Earth)* (25th Humana Festival); *Like Totally Weird*, *Ti Jean Blues* (22nd Humana Festival); *God's Man in Texas*, *Life Under 30* (23rd Humana Festival); *Touch, No. 11 (Blue and White)*, *Back Story* (24th Humana Festival), *Angels in America*, *Nixon's Nixon*, *Hair*, *Creditors*, *Wit*, *The Lover* and *A Slight Ache*, *How I Learned to Drive*, *Floyd Collins* and *Macbeth*. She has co-edited six anthologies of plays, and her writing has appeared in such publications as *TheatreForum* and *Jump Cut: A Review of Contemporary Media*. Ms. Wegener is a graduate of Princeton University and holds an M.A. in Theatre from Northwestern University.

CASTING

JAY BINDER (Casting—*Rembrandt's Gift*) with Jack Bowdan C.S.A., Mark Brandon, Laura Stanczyk, Sarah Prosser, is thrilled to return to Actors and the Humana Festival. They have cast extensively for Broadway, Off-Broadway, regional theatres across the country, film and television. Recipient of seven Artios Awards for excellence in casting.

THE ORPHEUS GROUP (Casting), a New York City-based company, is proud to offer Principal Casting Services for theatre, film, and television production. The incorporators, Maria E. Nelson and Ellyn Long Marshall, share over thirty years of proven professional experience in all phases of the entertainment industry. **Credits include:** The pre-Broadway production of Paul Simon's *Capeman*, national and international tours of *42nd Street*, *Your Arm's Too Short to Box with God*, *Jesus Christ Superstar*, *The Rocky Horror Picture Show*, and *Five Guys Named Moe*. **Film:** *Pinero* (starring Benjamin Bratt), *Real Women Have Curves* (winner of Audience Award/Best Film and Best Actress - Sundance 2002), *Girlfight* (producer John Sayles) - winner Best Film, Best Director, Sundance Film Festival 2000, *Simple Justice* (PBS), *Above the Rim* (New Line Cinema), *Condition Red*, *Caminos y Puentes*. Orpheus has worked with major New York theatre companies, including Lincoln Center Institute, INTAR, and En Garde Arts, and with such leading regional companies as Crossroads Theatre, The Alley Theatre, American Music Theatre Festival and Geva Theatre.

ABOUT ACTORS



"Actors Theatre provides insight into the human experience through live theatre that invigorates minds and emotions. The company leads Americana theatre in the creation of new plays and innovative re-imagining of the classics."

"Our vision is to build a home for inspired collaboration where great art sets new standards in excellence that will shape the future of the American theatre. We seek discovery by embracing the artistic spirit in everything we do. We will build a better community by bringing people together to participate in the power of collective imagination."

Actors Theatre of Louisville, the state theatre of Kentucky, is internationally acclaimed as one of America's most consistently innovative non-profit professional theatre companies. Founded in 1964, it has won a host of coveted awards and worldwide recognition for excellence. For 25 years it has been a major force in revitalizing American playwriting, with nearly 200 Actors-debuted scripts now in publication.

The annual Humana Festival of New American Plays is recognized as the premiere event of its kind, and each spring draws producers, journalists, critics, playwrights and theatre lovers from around the world for a marathon of new works. More than 250 Humana Festival plays have been added to the active American stage repertoire. Three Pulitzer Prize-winning dramas have originated in the festival — Donald Margulies' *Dinner With Friends*, Beth Henley's *Crimes of the Heart* and D.L. Coburn's *The Gin Game*.

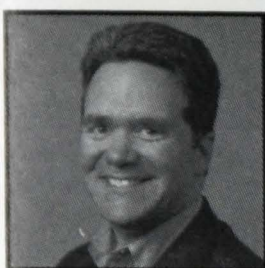
Under the leadership of Marc Masterson, the company's newly appointed Artistic Director, and Executive Director Alexander Speer, a 36-year Actors veteran, the theatre's programming includes a broad range of classical and contemporary work, in over 600 performances during a year-round season. The theatre employs 150 professionals, attracting to its stages many of the world's most talented theatre artists. Each play is directed and produced in Louisville with the costumes, scenery and properties seen on stage made by Actors' resident staff.

Depending on the time of year, Actors Theatre presents up to 24 performances a week in its downtown complex that includes a restaurant, an art gallery and three diverse theatres under one roof: the 637-seat Pamela Brown Auditorium, the 318-seat Bingham Theatre and the 159-seat Victor Jory Theatre. Registered as a National Historic Landmark, the theatre's home is a distinguished blend of historic yesteryear and the present.

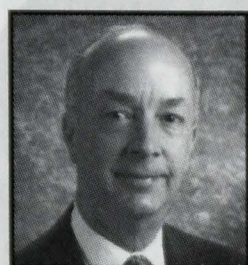
Actors Theatre receives remarkable community support, including an annual audience attendance of over 200,000 people, financial support from individuals, corporations and foundations, and assistance from hundreds of dedicated volunteers. The theatre's community outreach programs include: student matinees supported with teacher study guides and in-service training, free children's theatre productions, free apprentice showcase productions, public seminars and workshops, pre-and-post performance discussions, facility tours, a student subscription subsidy plan, discounted season ticket plans for students, senior citizens, people with disabilities and educators, audio described performances for low vision patrons and performances interpreted in American Sign Language.

The 38-year-old theatre is the recipient of the most prestigious awards bestowed on a regional theatre: a special Tony Award for Distinguished Achievement, the James N. Vaughan Memorial Award for Exceptional Achievement and Contribution to the Development of Professional Theatre, and the Margo Jones Award for the Encouragement of New Plays.

EXECUTIVE OFFICERS



MARC MASTERSON, ARTISTIC DIRECTOR, is celebrating his second season at Actors Theatre. He is an award-winning director with distinguished experience as a leader in the cultural community of Pittsburgh, where he served as Producing Director of City Theatre for 20 years. Poised to lead Actors Theatre into a new generation of artistic excellence, Mr. Masterson is acknowledged as a talented Artistic Director dedicated to building a dynamic relationship between the theatre, its artists, and its community. Under Mr. Masterson's direction, City Theatre developed a reputation for innovative programming and the production of new plays by such writers as Jeffrey Hatcher, Chaim Potok, Anne Bogart & the SIT Company, the performance band Squonk Opera, Maria Irene Fornes, and many others. Over the years, City Theatre produced dozens of world premieres and more than 130 regional premieres of contemporary plays. Recent directing credits include the premiere of Richard Dresser's *Wonderful World* (25th Humana Festival of New American Plays), *The Mystery of Irma Vep*, *Compleat Female Stage Beauty*, (American Theatre Critics citation 1999) and *Gross Indecency: The Three Trials of Oscar Wilde*. He also has freelance directing credits in New York and the regional theatre. Mr. Masterson earned his Master of Fine Arts degree from the University of Pittsburgh and a Bachelor of Fine Arts degree from Carnegie Mellon University, and subsequently taught at both universities. He was founder and chairman of the Greater Pittsburgh Arts Alliance, a board member of the Citizens for the Arts in Pennsylvania, and for Leadership Pittsburgh. He also served as a theatre advisory panel member for the Pennsylvania Council of the Arts and site reporter for the National Endowment for the Arts. He won the Man of the Year Vectors Award in 1998, and received the Lifetime Achievement Award from the Pittsburgh New Works Festival. He was profiled in "50 Cultural Leaders" by the Pittsburgh Post Gazette and won multiple "Best of" awards in the Pennsylvania media. He and his wife, Patricia Melvin, and their two daughters, Laura and Alexandra, are all happy to call Louisville home.



ALEXANDER SPEER, EXECUTIVE DIRECTOR, is celebrating his 36th season at Actors Theatre. Under his leadership, Actors' physical facility was moved to its present Main Street location, and the Arts and Commerce Building for Actors administration, costuming, rehearsals and leasing operations was acquired, along with a warehouse production studio for construction and storage of scenery and properties. More recently, he oversaw the expansion and renovation of Actors' historic Main Street complex, including the addition of the Bingham Theatre and a 400-space parking garage, the renovation of the backstages of both the Victor Jory Theatre and Pamela Brown Auditorium, and the enlarging and enhancement of all Actors Theatre lobbies. Mr. Speer is responsible for coordinating all financial affairs of the theatre and is the liaison between the Board of Directors and the administrative staff. Nationally, he has served as Treasurer and Executive Committee member of LORT, the League of Resident Theatres that represents the interests of 55 non-profit professional theatres, and is a member of the Theatre Advisory Council of the National Corporate Theatre Fund. He is an incorporator, board member and treasurer of the American Theatre Exchange Initiative, which promotes theatrical exchange between theatres in the US and the countries of the former Soviet Union. He has served as a Theatre Panel member for the National Endowment for the Arts and for both the Kentucky and North Carolina Arts Councils. Mr. Speer has taught theatre management at leading universities and served as a consultant to theatres around the country. A 1981 graduate of Leadership Louisville, Mr. Speer is active in the Greater Louisville community and serves on the boards of The Arts and Cultural Attractions Council, Louisville Central Area, and Main Street Association. He is a past board member of the Downtown Development Corporation and past treasurer and board member of Preservation Alliance. He is a past president of Main Street Association and participated in the Bingham Fellows Class of 2001. He currently serves on the Mayor's eMain Advisory Panel.

CORPORATE, FOUNDATION AND GOVERNMENT SUPPORT

The following corporations, foundations and government agencies provide operating and special support for Actors Theatre of Louisville during the 2001-2002 season. The Actors Theatre Board of Directors and staff gratefully acknowledge the generosity of each of these organizations. Please note that the list below reflects gifts received as of February 13, 2002.

PRESIDENTS CIRCLE

\$500,000 +

Fund for the Arts
The Humana Foundation

PRODUCERS CIRCLE

\$100,000 - \$499,999

Brown-Forman Beverages
Worldwide
Brown-Forman Corporation
The Kentucky Arts Council

DIRECTORS CIRCLE

\$50,000-\$99,999

Fifth Third Bank
The Shubert Foundation
Tricon Global Restaurants, Inc.

BENEFACTORS

\$20,000-\$49,999

Bank of Louisville
Bank One
Brown and Williamson Tobacco
Ford Motor Company
Meijer
National City
National Corporate Theatre
Fund
National Endowment for the
Arts
The Pew Charitable Trusts
Philip Morris U.S.A.
PNC Bank
Theatre Communications
Group

GUARANTORS

\$10,000-\$19,999

Jewish Hospital Healthcare
Services

SUPPORTERS

\$5,000-\$9,999

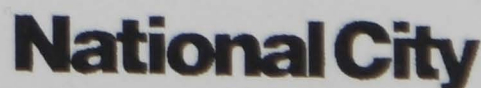
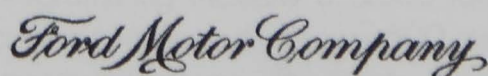
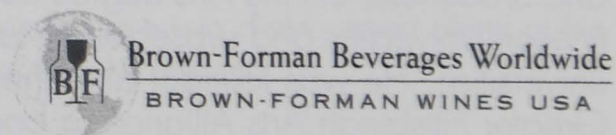
Greenebaum Doll & McDonald
PLLC
Ogden Newell & Welch, PLLC
Seagram/Universal
Alderman George Unseld


PARTNERS

\$1,000-\$4,999

Gannett Foundation
Pepsi-Cola General Bottlers, Inc.
Target Stores

ACTORS THEATRE SALUTES OUR 2001-2002 SEASON CORPORATE PARTNERS





JUDY MINER
PORCELAIN

Daily Pleasures
custom porcelain sinks, tiles and knobs

Extraordinary functional art.
502 228.4812

From Student rentals to Steinway . . .

TR Y Gist

PIANO CENTER
• TRUSTED IN KENTUCKY •

for Expert help . . .

MOVING
STORAGE
APPRAISALS
ESTIMATES
REFINISHING
SERVICE
RENTALS
SALES

STEINWAY
451-1831
(800)451-1831

Steinway • Boston • Yamaha • Baldwin • others
NEW • USED • Rent or LEASE to OWN

A history of serving The Louisville Orchestra and the Kentucky Center for The Arts

Get to know Louisville for only \$18 a year.

Louisville

MAGAZINE

+ O b j e c t s
F u r n i t u r e
J e w e l r y
A R T F o l k A r t



Swanson Cralle Gallery
1377 Bardstown Rd. Louisville 502-452-2904

2001-2002

annual fund

thank you

Actors Theatre of Louisville wishes to acknowledge and thank all of our wonderful donors to the 2001-2002 Annual Fund Campaign. We are extremely grateful for your support and commitment to Actors. The list below of our generous friends reflects gifts and pledges as of February 12, 2002.

PRODUCERS CIRCLE **\$25,000 & UP**

Edie and Barry Bingham, Jr.
Christina L. and Owsley Brown II
Mrs. Harry S. Frazier

DIRECTORS CIRCLE **\$10,000 - \$24,999**

John and Kitty Cranor
Mr. and Mrs. Lee Wilton Davis
David A. Jones, Jr. and Mary Gwen Wheeler
Bruce Merrick and Karen McCoy

DESIGNERS CIRCLE **\$7,500 - \$9,999**

Mr. and Mrs. Robert E. Kulp, Jr.
Jacqueline R. and Theodore S. Rosky
Todd P. Lowe and Fran C. Ratterman

INVESTORS CIRCLE **\$5,000 - \$7,499**

Patricia W. Ballard
Turney P. Berry
Mr. and Mrs. Frederic H. Davis
Peter and Sarah Fuller
Mr. and Mrs. Frank B. Hower, Jr.
Emily Hundley
David and Jill Klein
John and MarkAnn Long
Fairleigh and Abby Lussky
Robert T. and Eleanor Maddox
Martha and Richard Rivers
Marsha and David Roth
William M. Street
Terry and Amanda Tyler
Roanne and Karl Victor

PREMIER CIRCLE **(\$2,500 - \$4,999)**

Don and Fran Berg
Dr. and Mrs. John J. Buchino
Mr. and Mrs. S. Gordon Dabney, Sr.
Craig and Merrell Grant
Drs. Carol Kulp-Shorten and David Shorten
Mr. and Mrs. Lee Robinson
Edward P. Seigenfeld

PLAYERS CIRCLE **(\$1,000 - \$2,499)**

Anonymous
Mr. and Mrs. Jonathan S. Blue
Mr. and Mrs. Edward S. Bonnie
Dr. and Mrs. Jeffrey P. Callen
Dorothy M. Cherry
Charles and Mary Beth Clark
Ann and Stewart Cobb
Toby R. Davis
Laurie and John Diebold
Gayle and Earl Dorsey
Jeffrey and Jennifer Douglas
Mr. and Mrs. Bruce K. Dudley
Allen D. and Linda V. DuRand
Mr. and Mrs. Philip C. Eschels
Robert and Jennifer Eversole
Mr. and Mrs. Robert E. Gable
Mr. and Mrs. John R. Gregory
Gordon and Martha Gutmann
Marie Hertzman-Cochran
Ilma M. Hirsch
George and Lasca Kisslinger
Mr. and Mrs. Charles G. Lengstorf
William B. Lockwood, PhD, MD
Dr. and Mrs. Joseph J. McGowan
Judge and Mrs. Henry Meigs II
Jeffrey Meyer and Mark Hill
Brian and Debbie O'Rourke
Mr. and Mrs. Joseph A. Paradis III
Mark and Jan Pfeifer
Roseanne Reed, Ph.D.
Linda Reutlinger
Mr. & Mrs. Robert W. Rounsavall III
Kennedy & Sara Simpson
Mr. and Mrs. Walker Stites
Jim and Karen Stone
The Sumner Foundation, Inc.
Patricia M. Varga
Jerome and Kerry Walsh Skelly
J.D. Tobin, Jr.
Porter Watkins and George Bailey
Mr. and Mrs. Caldwell R. Willig
Marilyn and William Young Charitable
Foundation

BENEFACTORS (\$750 - \$999)

David and Lucille Fannin
 John and Morgan Hanley
 Betty Jane and David Mills

PATRONS (\$500 - \$749)

Tom and Sylvia Brite
 Greg Clark
 Gail and Kevin A. Connell
 Dr. and Mrs. William L. Cromwell
 Dr. David Dodd & Debbie Wilson-Dodd
 Dennis and Debra Farmer
 Kate and Jim Gaunt
 Dr. and Mrs. Salem George, Jr.
 Isadore & Rose Goldstein Family Foundation
 Don and Mary Grimes
 Dr. Maureen & Mr. Michael E. Gregg
 Margaret Handmaker and Donald Vish
 Jane Hardy & David Schmidt
 Katheryn Higgins
 Dr. Virginia Keeney
 Mark Langford, M.D.
 Richard and Connie Lewis
 Edward and Geraldine Lobert
 Boyce F. Martin, Jr.

In Memory of Mimi Martin
 Boyce F. Martin III
 Susan S. Means
 Julie B. Morton
 Mr. and Mrs. Robert M. Nash
 Emily O. Newman
 Terry and Jan Nofziger
 Mr. and Mrs. John S. Rankin
 Barbara and Halsey Sandford
 Sandy and Bill Schreiber
 Mr. and Mrs. Matt B. Schwartz
 Richard B. Schwarz
 Dr. Janet L. Smith
 Mr. and Mrs. Jack D. Stewart
 Mr. William W. Stodghill
 Dr. Catherine Newton & Dr. Gordon Strauss
 Mr. & Mrs. John Stuart
 Glenn and Ann Thomas
 Mrs. David S. Traub
 Darrell & Ann Wells

PACESETTERS (\$250 - \$499)

Mr. William T. Allen
 Anonymous (2)
 Dr. S. P. and Minx M. Auerbach
 Elaine and Donald Bornstein
 Mr. Jerald Brinley
 Mrs. Lillian Caudill

Allen Bush and Rose Cooper
 Rose P. Callen
 Lewis D. Cole
 Joan Cralle Day
 Gretchen and David Davis
 Mr. and Mrs. L.D. Deters, Jr.
 George C. Dick
 Mr. & Mrs. Thomas C. Diebold
 Doris Jean Elder
 Glenn M. Epperson
 Mr. William L. Fischer
 Dr. and Mrs. Diller B. Groff
 Margaret Fonda and George Herbener
 Mr. James Goldberg
 Dr. David Hill Goldstein
 Carroll Grossman and Harland Smith
 James and Barbara Hennessy
 William Daviess Hennessy
 Mr. and Mrs. Henning Hilliard
 Mr. and Mrs. Kenneth S. Johnson
 Dr. Mary Korfhage
 Donna Lawrence Productions, Inc.
 Carl W. Longren

In Memory of Jill Noelle Longren
 Ms. Stewart Lussky
 Mary Jo & William MacDonald
 Sara C. Merrill
 Joseph C. and Joanne T. Oldham
 Patrice and James Paton III
 Leigh-Anne Pennington
 Betty Quillet
 Kevin and Cheryl Sandefur
 Mr. and Mrs. Milton E. Scholla
 Dr. and Mrs. Larry Scott
 Ellen and Max Shapira
 Lydia Wells Sledge
 Thomas C. Smith
 Mr. Raymond O. Sommers
 Ellen and Pete Walton
 Geraldine Wolff

actors

actors theatre of louisville

Every effort has been made to ensure the accuracy of this listing. Names appear as requested by donors or as our records currently indicate. For corrections or changes, please notify Paula Rogers, Director of Annual Giving at (502) 584-1265. Thank you.

MAJOR GIFTS

Actors Theatre extends special thanks to the following:

Mr. Owsley Brown II for his generous support to renovate the Sara Shallenberger Brown Lobby.
Edie and Barry Bingham, Jr., Peter and Sarah Fuller and Jacqueline and Theodore Rosky for their pre-campaign support for Actors Theatre's capital and endowment funds.

THE JON JORY ENDOWMENT FUND

Jon Jory was Actors Theatre's Producing Director from 1969 to August of 2000. In celebration of Jon's tenure, Actors Theatre has established the Jon Jory Endowment Fund to support special artistic endeavors. The following individuals have contributed to the Fund in honor of Jon Jory:

Anonymous	William L. Fisher	Vincent Murphy
Barbara Beard	Ilma M. Hirsch	Laszlo Marton
Neville Blakemore, Jr.	Naomi Iizuka	Marsha Norman
Lillian R. Caudill	Baylor Landrum, Jr.	Shirley Pugh
Martha M. Davis	City of Louisville	Jacqueline and Theodore Rosky
Mary Beth and Frank Doheny, Jr.	Romulus Linney and Laura Callanan	Yandell and Betty Smith
Richard Dresser	Jon Klein	Amanda Foard Tyler
Oskar Eustis	Eleanor Nutt Maddox	

CORPORATE SUBSCRIPTIONS

The following companies enrich the lives of their employees and members by subsidizing a portion of their subscription or through payroll and automated deduction of the subscription cost. For more information or to enroll your company, contact Kim McKercher or Julie Gallegos at (502) 584-1265.

AEGON Companies	Hillerich & Bradsby	Members One Credit Union
AutoTruck Credit Union	Jewish Hospital Healthcare	Ogden Newell & Welch
Bank Of Louisville	Services	Red7e
Baptist Healthcare	KEMBA Credit Union	The Speed Art Museum
Baptist Hospital East	KIT Federal Credit Union	Stites & Harbison
BellSouth	LG&E Credit Union	Tarcana Credit Union
Brown-Forman Corporation	Louisville Police Officers Credit	Woodward Hobson & Fulton
Burdorf Interiors	Union	Wyatt Tarrant & Combs
Harrison County Hospital	Members First Credit Union	
J.J.B. Hilliard, W.L. Lyons, Inc.		

IN-KIND DONATIONS

The following businesses and corporations have supported Actors Theatre with a contribution of in-kind goods and services for the 2002 Midwinter Fantasy and the 2001-2002 season. We are grateful for their generosity. The listing below reflects contributions made as of February 15, 2002.

A. Arnold World Class Relocation	Courtyard by Marriott	The Lee W. Robinson Company
Aesthetics in Jewelry	Davis Center Jewelers	Renaissance Cruises
American Institute of Wine & Food	The Event Company	Seng Jewelers
Area Bank	General Electric Appliances	Six Flags KY Kingdom
Axxis, Inc.	Gist Piano Center	Jeff Skelton-Frank Otte Landscape &
Blue Chip Broadcasting	Glenmary Country Club	Design Group
Business First	The Greenbriar	USA Image Technologies, Inc.
Caesars Indiana	Gumby's Specialty Catering	US Airways
The Character Company	Hawley-Cooke Booksellers	Wyndham International
Cherry Valley Spas	Heritage Jewelers	YMCA Downtown Branch
Cingular Wireless	Hillerich & Bradsby Co.	Zephyr Cove
Comedy Caravan	Louisville Ballet	Yudofsky Furriers
Commonwealth Printing	Plantation Swim & Tennis Club	
Copper Vacations	Polo Fields Golf & Country Club	

THE 2002 MIDWINTER FANTASY: THE EMPEROR'S BALL

Actors Theatre would like to recognize and thank the following for their table purchase:

Associates in Dermatology

Bank of Louisville

Bank One

Brown-Forman Corporation

Caesars Indiana

Churchill Downs, Inc.

Chrysalis Ventures, Inc.

Cobalt Ventures, LLC

Commonwealth Bank & Trust
Company

Mr. & Mrs. John Cranor and Mr. &

Mrs. Kennedy Simpson

Mr. & Mrs. Stan Curtis

Dant-Clayton Corporation

Mr. & Mrs. Lee W. Davis

Fifth Third Bank

Firststar

Ford Motor Company

Greenebaum Doll & McDonald

PLLC

J.J.B. Hilliard, W.L. Lyons, Inc.

Humana Inc.

Jewish Hospital Healthcare Services

LG&E Energy Corporation

William M. Mercer, Inc.

National City

Ogden Newell & Welch

Papercone Corporation

Pediatric & Perinatal Pathology

Associates, PSC

Pepsi Americas, Inc.

Philip Morris, USA

PNC Bank

Republic Bank & Trust Company

Todd Investment Advisors

Tricon Global Restaurants, Inc.

Triple Crown Productions, LLC

NATIONAL CORPORATE THEATRE FUND

The National Corporate Theatre Fund is a nonprofit corporation created to increase and strengthen support from the business community for eleven of this country's most distinguished professional theatres. Actors Theatre receives the support of the following corporations through their contributions to the National Corporate Theatre Fund:

ABC Inc.

The Actors' Fund of America

ADP

American Express Company

Aon Risk Services

Arthur Andersen

Karen Bachman

Bank of America

Bear, Stearns & Co., Inc.

Bell Atlantic Foundation

Roger Berlind

Frank Biondi

Bill Blass

BMG Entertainment

Hugo Boss USA, Inc.

Jacquie and Raymond A.

Boyce

Bristol-Myers Squibb Company

Broadway Video

Fran and James E. Buckley

Christopher Campbell

Carole Hays Productions

Arthur Carter

CBS Foundation

Citigroup Foundation

The Chase Manhattan Bank

Colgate-Palmolive

Comedy Central

Hilary E. Condit

Deege Productions

Donaldson, Lufkin & Jenrette

Dramatists Play Service, Inc.

EdificeRex

The Rosalyn & Irwin Engelman

Philanthropic Fund

Ernst & Young

FleetBoston Financial

The GE Fund

Jennifer Goodale

The Willan & Diana Romney

Gray Family Foundation

The GTE Foundation

Joseph W. Hammer

Samuel Heyman

Robert J. & Mary Higgins

HSBC Bank USA

Horan Imaging Solutions

The Interpublic Group of

Companies

Joseph E. Seagram & Sons,
Inc.

KPMG

Mapelton Investments

Marsh & McLennan

Companies, Inc.

Martin Massman

Master Eagle

Merrill Lynch & Co.

Foundation

Merrill Lynch Capital Markets

Metropolitan Life Foundation

Morgan Stanley Dean Witter

Robert A. Mulshine

Newsweek

Novaworks

Nueberger& Berman

Ogilvy & Mather New York

Dean Ostrum

PaineWebber

Pfizer Inc.

Philip Morris Companies Inc.

Praxis Media

Pricewaterhouse Coopers

Thomas C. Quick

Quick & Reilly

Revlon Inc.

RGB Group, Ltd.

Robert Rosen

Scotia Capital

Michael P. Schulof

Edward P. Seigenfeld

Jerry Seinfeld

Stagebill

Sheridan Steinberg

Steven & Daryl Roth

Foundation

Stuart Thompson Productions

Stucherman Consulting Group

Robert N. Trombly

Evelyn Mack Truitt

James S. Turley

Sol J. Upbin

Viacom

Vornado Realty Trust

Warner Bros. Pay-TV

Winstar New Media Co. Inc.

WIT Capital

Xerox

SERVICES AND AMENITIES

TICKET SALES AND INFORMATION

Box Office Hours

Monday 10 a.m. - 5:30 p.m.
Tuesday - Friday 10 a.m. - 8:30 p.m.
Saturday 10 a.m. - 9:30 p.m.
Sunday 1 - 8 p.m.

Order by phone:

(502) 584-1205 ■ 1-800-4ATL-TIX

Ticket orders placed by phone are subject to a \$2 processing fee. This fee is not applicable to season subscribers.

TDD: (502) 584-1321

Order Online: actorstheatre.org

Order by Fax: (502) 561-3337

Address:

316 West Main Street
Louisville, KY 40202-4218 USA

Group Sales:

Discounts are available for groups of 10 or more.
Call (502) 585-1210.

Student/Senior Citizen/People with disabilities

Fifteen minutes prior to curtain, available seats are sold to students, senior citizens and people with disabilities as Rush Tickets for \$12 each (cash or check only). Limit two per person. For many plays, special daytime student matinees are scheduled.

Quick Tix

Half-price tickets are sold 2 - 6 p.m. on the day of a particular performance or one hour prior to an early matinee performance. These tickets may only be purchased in person with cash or check. Subject to availability, limit 6 per customer.

Gift Certificates

Perfect for all occasions, with attractive packages available. Available in any amount.

Season Subscriptions

Discounted tickets through subscription packages are available; call for options.

Subscriber Ticket Exchange

Subscribers may exchange their tickets either by phone or in person. Subscribers should call or come by the box office to make arrangements as soon as exchange needs are known. Ticket exchanges may be made until noon the day of the date on the tickets or one hour in advance of a matinee—only for another performance of the same play. Upgrade fees may apply.

ENCORE AT ACTORS RESTAURANT AND BAR

Actors' full service restaurant and bar are located in the lower level of the building. Hours: Lunch available for all matinees — two hours prior to performance. Dinner beginning at 5pm Tuesday through Sunday; bar open nightly after performances; late night menu Tuesday thru Sunday. Please allow a minimum of an hour and a half to dine if seeing a play. Reservations recommended. Special arrangements can be made for parties of 10 or more. For information and reservations call (502) 584-1205 (box office) or (502) 561-3344 (restaurant).

LATECOMER POLICY

Pamela Brown Auditorium: Latecomers will be directed to temporary seating or standing in the balcony until intermission. No one will be admitted to the main floor once the performance begins.

Bingham Theatre: Latecomers will be directed to the mezzanine entrance where standing room is available until intermission. Because the stage level entrance is also an actor entrance, no one will be admitted through the stage level entrance once the performance begins.

Victor Jory Theatre: Because of its intimate size and unique layout, latecomers cannot be seated in the Victor Jory Theatre.

EMERGENCY PROCEDURE

In the event of a fire, severe storm or earthquake, you will be instructed by an announcement from the stage indicating the best method of exit. Please notice the multiple red exit signs in the theatre. For your safety, please exit in a calm and orderly manner.

CAMERAS AND RECORDING DEVICES

The use of cameras — with or without a flash — recorders or other electronic devices inside the theatres is strictly prohibited.

CHILDREN

Children attending an event, regardless of age, must have a ticket. If your child proves disruptive or excessively restless, you may be asked to leave.

FOOD AND DRINK

No eating or drinking is allowed in the theatres.

PAGERS, PHONES AND WATCH ALARMS

Please set pagers to silent mode or check them with the house manager so they may be guarded by front-of-house staff. Patrons who are paged will be immediately and discreetly contacted by the house manager. Cellular phones should also be checked with the house manager or deactivated. Please deactivate your electronic watch alarm so it will not interrupt the performance.

ACCESSIBILITY



Accessible ramps, elevators, parking, restrooms, water fountains and wheelchair seating are available for patrons with disabilities. Parking is located on the mezzanine level of the garage. Accessible restrooms are located on the first floor and mezzanine level.

Sound Enhancement

The Pamela Brown is equipped with an FM Wireless System for hearing enhancement. The Bingham and Victor Jory Theatres are equipped with an infrared system. Lightweight, wireless headsets are available free of charge at the box office, the coat check or from the house manager.

The Infrared Listening System is made possible through the generosity of Kroger Stores.

Audio-Described Performances



Selected performances are audio described for low-vision patrons. During the performance, a narrator gives an ongoing description of the action. A schedule is available at the box office.

Audio Description is a service of Kentucky Center for the Arts through the generosity of Terry Sales in memory of Stuart M. Sales.

Signed Performances



Selected performances are presented with American Sign Language by a theatrical interpreter. A schedule is available at the box office.

RENTALS

The Actors Theatre complex is available for seminars, meetings and private parties. For more information call (502) 584-1265.

MEMBERSHIP

Support Actors Theatre by becoming a member of the Annual Fund. For more information call Paula Rogers at (502) 584-1265.

GET INVOLVED

Become a volunteer usher or an Actors Associate and support the theatre in many vital and invaluable ways. For more information, contact the Director of Volunteer and Audience Relations at (502) 584-1265.

BACKSTAGE TOURS

Backstage and facility tours are available by request. Please call (502) 584-1265 at least one week in advance to schedule yours. Ask for the Director of Volunteer and Audience relations.

ssdc

The Directors are members of the Society of Stage Directors and Choreographers, Inc., an independent national labor union.

ACKNOWLEDGMENTS



Actors Theatre of Louisville is a member of the Fund for the Arts.

Actors is supported in part by a grant from the National Endowment for the Arts in Washington, D.C., a federal agency.

Actors is supported in part by a grant from the Kentucky Arts Council, a state agency of the Education, Arts and Humanities Cabinet.

Actors is a member of the Kentucky Citizens for the Arts and American Arts Alliance.

Actors is a constituent of Theatre Communications Group (TCG), a national service organization.

Actors operates under an agreement between the League of Resident Theatres and Actors' Equity Association, the union of professional actors and stage managers in the United States.

Actors Theatre of Louisville is a participant in the National Theatre Artist Residency Program, administered by Theatre Communications Group, the national organization for the American theatre, and funded by The Pew Charitable Trusts.

Naomi Iizuka and Actors Theatre of Louisville are participants in the Theatre Residency Program for Playwrights, a project of the National Endowment for the Arts and Theatre Communications Group, with additional support from Seagram/Universal.

All programs, activities and services are provided equally without regard to race, color, religion, national origin, age, sex, sexual orientation or disability.

Services provided to the blind and visually impaired are made possible by the generosity of Drs. Arthur and Virginia Keeney.

SPECIAL THANKS

Special Thanks to the University of Southern Indiana for their generous contribution.

THE GALLERY AT ACTORS



> endeavors in media and art

For the duration of the festival our lobbies will be home to an exhibition titled *PLAY>: Endeavors in Art and Media*. Including work from both nationally and internationally renowned artists like David Levithal, Jack Pierson, Stefan Banz and Martin Parr, the exhibition will also showcase the work of local artists such as Valerie Sullivan Fuchs and Michael McCoy, among others. Curated by Thomas Delisle and Russell Hulsey and pro-

duced in association with Swanson-Cralle and East Market Galleries and the Speed Art Museum, the show will bring together a wide variety of media, including photography, sound-based interactive pieces and video and computer-based art.



The **Speed** Art Museum

MAINSTAGE USHER CAPTAINS

Dolly Adams
Marie Allen
Beth Atkins
Carolyn Beall
Becky Briley
Maleva Chamberlain
Sharon Charles-Kraft
Diane Cody
Betty Combs
Donna Conlon
Marilyn Curry

Doris Elder
Molly Flannery
Tom Gerstle
Bill and Vieta Gravely
Margie Guetig
Mari Hammer
Marilyn Huffman
E.J. Kellerman
Sandy Kissling
Andrea Macias
Gladys Napper

Barbara Nichols
Teresa Nusz
Connie Pendygraft
Nancy Rankin
Susan Stapleton
Tim Unrue
David Wallace
Bette Wood
Barbara & Beth Wright

Encore at actors

Enjoy fine dining in a casual atmosphere.

Open for dinner or late-night dining after the show, with bar service at intermission and following performances.

Dinner beginning at 5 p.m. Tuesday through Sunday.

Lunch available for all matinees two hours prior to performance.

Reservations Recommended: 561-3344 or 584-1205

TO BE OR NOT TO BE . . . A WRITER!

Continuing its tradition of innovative educational programs, Spalding University is proud to offer a two-year, brief-residency Master of Fine Arts in Writing Program with concentrations in fiction, poetry, creative nonfiction, and writing for children, beginning in October 2001.

- 10-day on-campus residencies in October and May
- A semester of one-on-one individualized study by correspondence
- Outstanding teaching faculty of publishing writers from all over the country
- Five-to-one student/faculty ratio

For enrollment information, contact
Graduate Admissions-MFAW,
Spalding University, 851 S. Fourth St.,
Louisville, KY 40203, 502.585.7105,
800.896.8941, ext. 2105, email:
gradadmissions@spalding.edu

**For information regarding
opportunities to support
Kentucky's first Master
of Fine Arts in Writing
Program, contact:**

**Jeff Ashley, Vice President
for University Advancement
at 502.585.7100
email: jashley@spalding.edu**



851 SOUTH FOURTH STREET
LOUISVILLE, KY 40203-2188

WWW.SPALDING.EDU/GRADUATE/MFAINWRITING

There's a whole lot riding on the success of your journey.

A dear grandmother, a proud aunt and uncle, a hard-working father and mother, a grade-school teacher, the corner grocer and a part-time pastor, a cousin and the little old lady upstairs. Your journey means everything to them. They're all cheering for you to make it, buy a great car and take them for the most exhilarating ride of their lives. One at a time or as a Sunday tour group. That's why we build BMWs the way we do. Ride on.

The BMW 5 Series

bmwusa.com
1-800-334-4BMW



The Ultimate
Driving Machine[®]



THEATRE STAFF

ARTISTIC DIRECTOR, Marc Masterson

EXECUTIVE DIRECTOR, Alexander Speer

Actors Theatre of Louisville was founded in 1964 by Richard Block in association with Ewel Cornett. Jon Jory was Producing Director from 1969 to 2000.

ADMINISTRATION

BUDGET AND MANAGEMENT

General Manager James Roemer
Assistant General Manager Jeffrey S. Rodgers
Systems Manager Dottie Krebs
Bookkeeper Mary Ann Thompson
Assistant Bookkeeper Shirley Bruce

BUSINESS OFFICE

Executive Secretary Wanda Snyder

COMMUNICATIONS

Director James Seacat
Director of Marketing Randy Blevins
Media & Publicity Coordinator Kyle Shepherd
Graphics Coordinator Jason Yann
Associate M. Meredith Bruce
Manager of Outbound Sales ... Allison Hammons
Mail Services Marianne Zickuhr

DEVELOPMENT

Director of Development &
External Relations Jeanne Curtis
Director of Annual Giving Paula Rogers
Director of Foundation &
Corporate Giving Kate Carpenter Chandler
Development Associate Stephanie Mayfield
Director of Community Relations &
Special Projects Andrew C. Crocker

FESTIVAL

Coordinator Michael K. Brooks, Jr.

TICKET SALES

Director Emma E. Oberdieck
Senior Box Office Manager Sandra Blakeney
Training & Technology Manager Steve Clark
Senior Subscriptions Manager Kim McKercher
Subscriptions Manager Julie Gallegos
Customer Service Eric Federspiel,
Heather Gaither, John Hagan, Kristy Kannapell,
Melissa Kelley, Kae Thompson
Group Sales Manager Judy Osborne
Group Sales Assistant J. Stephen Smith

OPERATIONS STAFF

Director of Operations ... Mike Schüssler-Williams
Maintenance Staff... Michael Mayfield, Allan Reed
Custodian Walter Miller, Jr.
Receptionist Dorothy King

Housekeeping Supervisor Charlene Brown
Housekeeping Staff Karen Allen, Gregory
McClure, Anthony Ramseur, Douglas
Reeser, Keisha Tiiler, Terrence Tiller, Katina
Williams, LaTonya Yarbor

VOLUNTEER AND AUDIENCE RELATIONS

Director Kristi Papailler-Berkley
House Managers Nadra Hashim,
Darnell Johnson, E.J. Kellerman, Bill Nusz, Kyle
Sawyer-Dailey
Coat Check. Amy
Attaway, Michelle Gray, Peter Meyer, Andrea
Rodriguez, Matt Whitesel

RESTAURANT

Manager Linda Heller

ARTISTIC AND PRODUCTION

Associate Artistic Director Timothy Douglas
Production Manager Frazier W. Marsh
Artistic Manager Zan Sawyer-Dailey
Assistant to Artistic Manager ... Cara Miller Solley
Production Stage Manager Paul Mills Holmes
Stage Manager Alyssa Hoggatt
Assistant Stage Manager Debra A. Freeman
Company Manager Beth A. Cobb

RESIDENT DESIGNERS

Scenic Designer Paul Owen
Property Dept. Director Mark Walston
Sound Designer Vincent Olivieri
Lighting Designer Tony Penna

LITERARY

Dramaturg/Director of
New Play Development Amy Wegener
Literary Manager Tanya Palmer
Literary Office Assistant Nicole Burgund
Guest Dramaturg Stephen Moulds

EDUCATION

Director Danielle Minnis

DESIGN AND TECHNOLOGY

Technical Director John Barnett
Assistant Technical Director Richard Uhrick
Shop Foreman Mike Bowen

Lead Carpenter Jerry Prasser
 Carpenters Dave Foster, Dana Harrell, Jason Grant, Sam Sgroi, Pierre Vendette
 Technical Production Assistant Brad Abner
 Carpenter Alexis Tucker
 Design Assistant Brenda Ellis
 Scenic Charge Artist Kerri LaCharite
 Scenic Artist Nina Tetrault
 Deck Carpenter Karen Griffin, Jennifer Parker
 Assistant Props Master Doc Manning
 Props Artisans Troy Campbell, Glen Detinger
 Tracey Rainey, Dan Tracy, Ann Marie Werner
 Props Carpenter Karl Anderson
 Costume Shop Manager Margret Fenske
 Assistant to Costume Designer John White
 Craftmaster Shari Cochran
 Wigmaster Bobb Terrell
 Drapers Dawn Simmons, Susan Williams
 First Hands Margaret St. John, Jeremy Williams
 Stitchers Star Little, Rose Maluda
 Karen Merrill
 Wardrobe Masters..... Joe Hagan,
 Misty Dawn Jordan, Andrea Scott
 Design Assistant Journeyman Mike Floyd
 Systems Engineer/Supervisor
 Jason Czaja
 Assistant Sound Designer Colbert Davis
 Sound Technician ... Matt Hubbs, Andrew Jackson
 Ben Marcum, Jessica Musselwhite
 Lighting Supervisor Paul Werner
 Swing Electrician/Board Operators John
 Eckert, Sandra Harned, Matthew Henson, Hillery
 Makatura
 Lighting Journeyman Jen Rock

APPRENTICE/INTERN COMPANY

Director Sullivan Canaday White
 Assistant to the Director Alyson Dougherty

APPRENTICES

Colette Beauvais, Joey Belmaggio, Matt Bridges,
 Camilla Busnovetsky, Ryan Clardy, Eleanor Clark,
 Kristi Funk, Jake Goodman, Amy Guillory, Christopher
 Illing, Barbara Lanciers, Anthony Luciano, Alan Malone,
 Stacy L. Mayer, Elisa Morrison, Melanie Rademaker,
 Dave Secor, Donovan Sherman, Colin Sullivan, Kate
 Umstatter, Lindsey White, Tom Wooldridge

INTERNS

Arts Administration Catherine Fannin
 Communications Chris Hartman, Amy Schulwolf
 Festival Robert Lee Simmons
 Literary Carrie Nutt, Nancy Maria Vitale
 Stage Management Paula Langsam
 Amanda Lynch



We'll set the stage!

**Selection of Fine
Wines & Spirits**



Start the evening right!
 Plan to join us for a
 memorable gourmet dining
 experience. Our new
 menu is now available.

OPEN FRIDAY & SATURDAY
 11:30 AM-2:30 PM 5:30-10:00 PM

SUNDAY BRUNCH
 9:30 AM-2:00 PM

456-0980 *Reservations Requested*

3101 Bardstown Road at the Watterson Expressway

MASTERWORKS

FROM THE ALBERTINA



Albrecht Dürer (German, 1471–1528)
Head of an Angel, 1506
 Pen and ink, white on blue paper
 Collection of the Albertina, Vienna,
 Department for Prints and Drawings
 © Albertina

Ticket prices for the exhibition are \$10 each and may be purchased at the museum. Group discounts (for 20 or more) are available by calling (502) 634-2960.



The **Speed** Art Museum

(502) 634-2700 TDD (502) 634-2706
www.speedmuseum.org

Michelangelo,
 Rubens, Dürer,
 Raphael, Rembrandt,
 and More

March 19–May 12

This exhibition is drawn from the collection of the Albertina, Vienna. The exhibition is organized by the Albertina and ArtReach International.

You will be enthralled by masterpieces from one of the world's oldest and most important collections of drawings and prints. *Masterworks from the Albertina*—selected from the renowned collections of the Graphische Sammlung Albertina in Vienna, Austria—features work by some of the world's most important artists. Don't miss original masterpieces by Dürer, Raphael, Michelangelo, Rubens, Rembrandt, and others. This exhibition of 102 images presents works from the High Renaissance through Rococo periods.

The exhibition is made possible through the generosity of Bolla Wines of Italy.



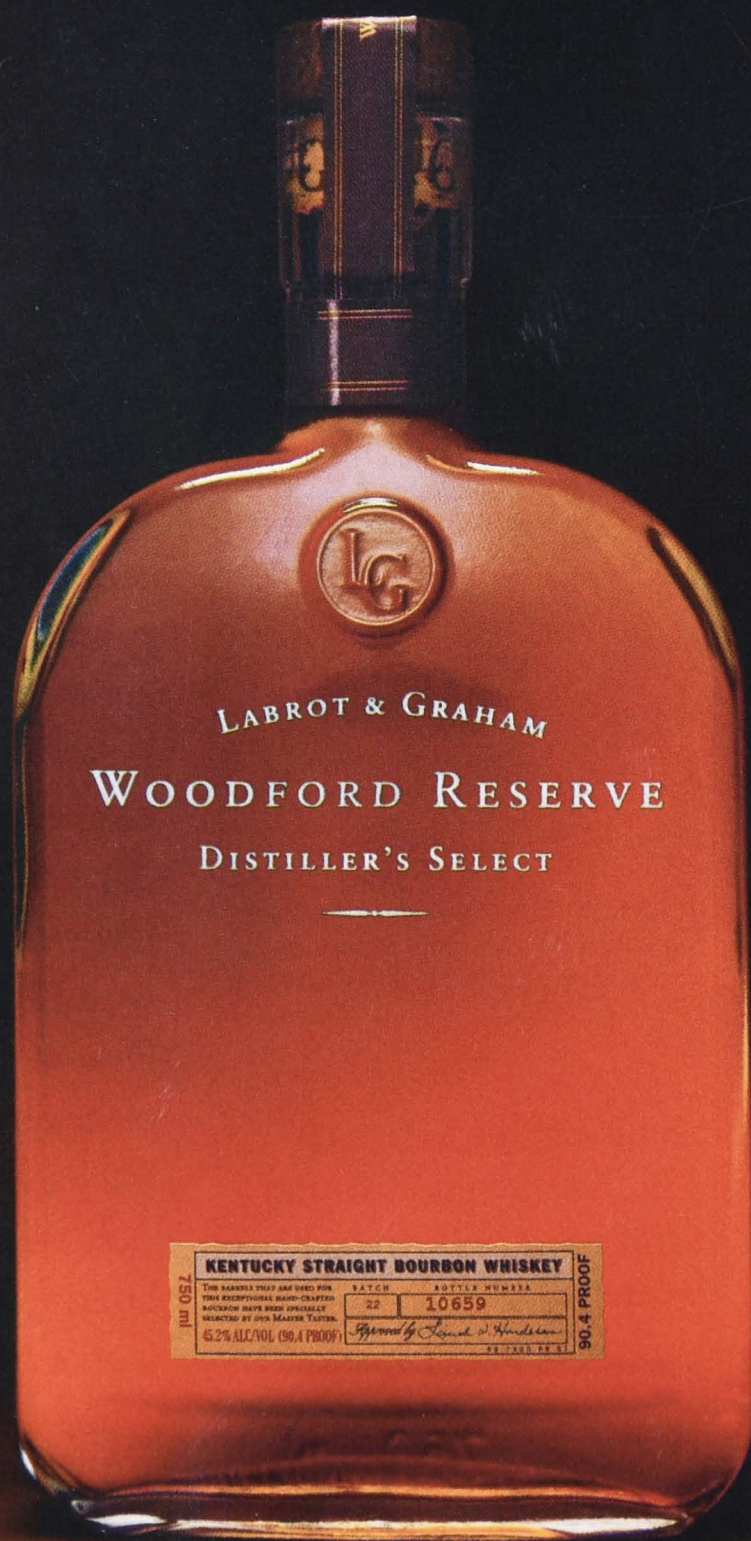
BOLLA



FEW BOURBONS

START CONVERSATIONS

BEFORE YOU ACTUALLY DRINK THEM.



WELCOME TO THE NEXT LEVEL.

KENTUCKY STRAIGHT BOURBON WHISKEY

www.woodfordreserve.com

PLEASE DRINK RESPONSIBLY. Woodford Reserve Distiller's Select Kentucky Straight Bourbon Whiskey.
45.2% Alc. by Vol., Labrot & Graham Distillers Co., Versailles, KY