

Subject **Fwd: The Medium Pittsburgh**  
 From Michelle Preston <michelle@siti.org>  
 To Stephanie Neel <archive@siti.org>  
 Cc Megan Carter <mcarter@siti.org>  
 Date 2022-02-07 10:49



- Flow Chart .pdf (~557 KB)
- Chair flow chart (1).pdf (~105 KB)
- Spike Marks (1).pdf (~268 KB)
- Xerox Scan\_02062022103709.pdf (~1.7 MB)
- Medium Backstage left run plot.pdf (~44 KB)
- Medium Backstage Right run plot.pdf (~178 KB)
- Medium Costume Preset list.pdf (~670 KB)
- THE MEDIUM – Costume presets.pdf (~45 KB)
- The Medium Prop Preset (3) (1).pdf (~33 KB)

Thought you'd find this interesting. Of course I'm sure you and Megan will discuss how best to archive this info.

Best,  
 Michelle

Michelle Preston  
 Executive Director  
 SITI Company  
 520 8th Avenue, Suite 310  
 New York, NY 10018  
 New York: 212-868-0860 x101  
 Cell: 563-349-7759  
[michelle@siti.org](mailto:michelle@siti.org)  
 (she/her/hers)

Begin forwarded message:

**From:** Patti Kelly <[pkelly@citytheatrecompany.org](mailto:pkelly@citytheatrecompany.org)>  
**Subject:** The Medium Pittsburgh  
**Date:** February 6, 2022 at 12:01:20 PM EST  
**To:** Megan Carter <[mcarter@siti.org](mailto:mcarter@siti.org)>, Claire Mannle <[claire@siti.org](mailto:claire@siti.org)>, Michelle Preston <[michelle@siti.org](mailto:michelle@siti.org)>, Darron West <[darronwest@mac.com](mailto:darronwest@mac.com)>, Brian Scott <[brianhscott@mac.com](mailto:brianhscott@mac.com)>, Ellen Lavaia <[ellenlavaia@gmail.com](mailto:ellenlavaia@gmail.com)>, Anne Bogart <[adbogart@mac.com](mailto:adbogart@mac.com)>  
**Cc:** Rachel D'Amboise <[rdamboise@citytheatrecompany.org](mailto:rdamboise@citytheatrecompany.org)>, Tony Ferrieri <[tferrieri@citytheatrecompany.org](mailto:tferrieri@citytheatrecompany.org)>

Hello all, here is the paper work for The Medium. Ellen will receive hard copies of all of this, plus my original blocking script and a copy of the calling script when she comes on Tuesday. You will find attached a new scan of the flow chart and the blocking script. I noticed a change in The Drama that I had not transferred. It is complete in these versions. I already sent the scan of the calling script to Ellen, Megan, Brian and Darron. All of this will be kept in the City Theatre archives as well.

Please note that the spike mark/set diagrams are not to scale AT ALL. They are just my plots from rehearsal.

I will forward pictures of the prop presets as soon as we have them labeled. I need to print to a printer I don't have access to right now in order to do that.

If there is anything else you need, please let me know.

Patti Kelly | Resident Production Stage Manager | 412.431.4400 ext. 224  
 She/Her/Hers  
**City Theatre Company**  
[1300 Bingham Street | Pittsburgh, PA 15203](#)

The Medium  
Prop Preset  
As of 2/2/22

SR

- Green Chair (VP) - R4, SR side of flat seam, facing SR
- Blue Chair (GM) - R4, US of boom, facing US
- Pink Chair (SW) - R3, against flat seam, facing US
- Orange Chair (EL) - R4, SR, facing SL
- Pipe (SW) - R3 shelf
- Pipe (GM) - in right pocket of Sport Coat
- Wooden Slotted Spoon (GM) - R3
- Cue Cards (MM) - far right side of R3
- Black Glasses (SW) - R3 shelf
- Gray Apron (MM) - folded in 3 and rolled, next at top
  - Dustrag in right pocket
- Eye Patch (GM) - R3
- Orange Juice (SW) - above UR hooks
- Glucose Tablets (SW) - above UR hooks

URC

- Clipboard w/Pencil and Hanky (EL)
  - Pencil clipped into Clipboard, tip on the left
- Silver Glasses (SW)
- Cigarette Holder (EL)
- Cat Eye Sunglasses (EL)
- Handbag (VP)
  - Hanky
  - Granny Glasses
- Gun (VP) - in lockbox, in green room until places
- White Sunglasses (EL)

Ladies' Dressing Room

- Large Pill Shaker (EL)

## SL

- Table (GM) - DS L3, clear of lights, standing on short edge, legs US
- Bottle (VP) - on orange book
- Gold Framed Glasses (SW)
- Orange Book (VP)
- Small Green Can (VP) - on L2 shelf
- Unweighted Blue Can (VP) - on L2 shelf
- Big Pink Can (VP) - on L2 shelf
- Tallboy Green Can - on L2 shelf
- Umbrella (VP)
- Green Bowl (VP)
  - 2 Weighted Blue Cans
- Purple Bowl (VP)
  - Wooden Spoon
- Handkerchief (SW)
- Woodblock and Scissors
- Orange Juice (SW) - above UL hooks
- Glucose Tablets (SW) - above UL hooks
- Black Glove
- Laundry Bag
- Rhinestone Glasses (VP)

## ULC

- Small Pill Bottle Shaker (EL)
- Binoculars (VP)

## Men's Dressing Room

- Piece of Wood/Remote Control (MM)
- Tortoise Shell Glasses (GM)
- Round Glasses (MM)

## SL Costumes

### VP Hook (Top-Bottom)

- Long Sleeved Black and White Dress (unzipped)
- Black and White Striped Skirt (unsnapped)
- Shawl
- Black and White Short Sleeved Dress
- Half Apron
- Polka Dot Poncho
- Full Apron

### EL (Top-Bottom)

- Shawl
- Black and White Blouse
- Polka Dot Skirt
- Black and White Pants
- Small T-shirt
- Jacket
- Large T-shirt
- Newspaper Shorts



## SL Costumes

### SW (Top-Bottom)

- Sailor Hat
- Rubber Apron
- Short Sleeved Button Down
- Sweater Vest
- News Brief Jacket
- Flannel Shirt
- Serape
- Bandana
- Shorts
- Black Short Sleeved Button Down
- White Lab Coat

### GM (Top-Bottom)

- Rugby Shirt
- Black and White Sweater
- Vest (buttoned)
- Bandana
- Henley

STAGE LEFT		STAGE RIGHT		IN DRESSING ROOM / GARMENT		
WILL		WILL	BROWN FEDORA	GM	TORTOISE SUNGLASSES	AT STATION
			TAN TRENCHCOAT	GM	HANKERCHIEFS	AT STATION
			CREAM CARDIGAN	WILL	RED GLASSES	AT STATION
			GREY APRON			
			STRAW WESTERN HAT			
STEPHEN	RUBBER APRON	STEPHEN	TUX JACKET W ATTACHED SCARF			
	WHITE SAILOR HAT		WHITE SHUTTER GLASSES			
	BLUE TINTED SUNGLASSES		B&W GINGHAM BLAZER			
	SHORT SLEEVE WHITE BUTTON UP		WHITE BOWTIE			
	B&W STRIPE CARDIGAN SWEATERVEST		CROSS LAPEL PIN			
	HERRINGBONE BLAZER					
	GREY PLAID SNAP LONG SLEEVE SHIRT					
	GREY PLAID SERAPE					
	GREYISH PURPLE BANDANA					
	BLACK COWBOY HAT					
	LEATHER GUN HOLSTER					
	RAP SHORTS					
	BLACK SHORT SLEEVE BUTTON UP					
	WHITE XL LABCOAT					
GM	WHITE & GREY RUGBY LONG SLEEVE	GM	GREEN/GREY ONE ARMED JACKET			
	B&W STRIPED PULLOVER SWEATER		GREY PORKPIE HAT			
	OATMEAL HENLEY SHIRT		BLACK EYEPATCH			
	DARK BROWN FRINGE COWBOY VEST		B&W CHECKED BLAZER			
	BLACK BANDANA		BLACK DRESS SHOES #2			
	BEIGE COWBOY HAT		CREAM RUFFLED NECKTIE			
	BLACK COWBOY BOOTS		BLACK SEQUIN TUX JACKET			
			BLACK SHIFT DRESS W WHITE DETAIL			
			BLONDE BOB WIG			
			SILVER HEELS			
			RAP SHORTS			
			BLACK POLO			
			WHITE UNDERSHIRT			
			PAIR OF CHARCOAL SOCKS			
ELLEN	WHITE LACE SHAWL	ELLEN	VNECK BLACK SLEEVELESS DRESS			
	B&W POLKA DOT MINISKIRT		GREEN SILKY DRESS			
	WHITE BLOUSE W BLACK TRIM		SHORT BLACK WIG W BANGS			
	BLACK BALLET FLATS		BLACK CAT EYE SUNGLASSES			
	B&W WIDE LEG PRINT PANTS		B&W SCARF			
	WHITE SCOOP NECK TSHIRT		BLACK LONG PLEATHER JACKET			
	BLACK SHORT JACKET W PLAID DETAIL		BLONDE CURLY BOB WIG			
	WHITE MOD OVAL SUNGLASSES		B&W BAMBOO PRINT SLEEVELESS DRESS			
	RAP SHORTS		WHITE SATIN HAIR BOW			
	MEDIUM WHITE POLO		BLACK HEELED BOOTIES #2			
VIOLETA	LONGSLEEVE B&W KNIT DRESS	VIOLETA	SEQUIN MINI DRESS			
	B&W LEATHER SNAP SKIRT		GREY CURLY WIG			
	WHITE PILLBOX HAT		WHITE BLOOMERS			
	BLACK PURSE		WHITE SLEEVELESS BLOUSE W BLACK TRIM			
	FEATHERED HAT		PLEATED B&W STRIPED PATTERN SKIRT			
	SQUARE RHINESTONE SUNGLASSES		BLACK CLOCHE HAT W BLACK BOW			
	WHITE LACE RUFFLE EDGE SHAWL		RAP SHORTS			
	B&W GINGHAM SORT SLEEVE DRESS		LARGE WHITE POLO			
	WHITE HALF APRON					
	B&W POLKA DOT PONCHO					
	B&W CHECKED APRON					
	WHITE CHEFS HAT					
	WHITE HARD SHELL BONNET					

# THE MEDIUM COSTUME PRESETS

02/02/2022  
CITY THEATRE  
PITTSBURGH, PA



## Costume Pre-Set List Instructions

All main areas on setting are labelled by actor, but some pieces have specific placement for quick changes. All clothing lists are ordered from Back to Front for easier setting.

### Stage Right:

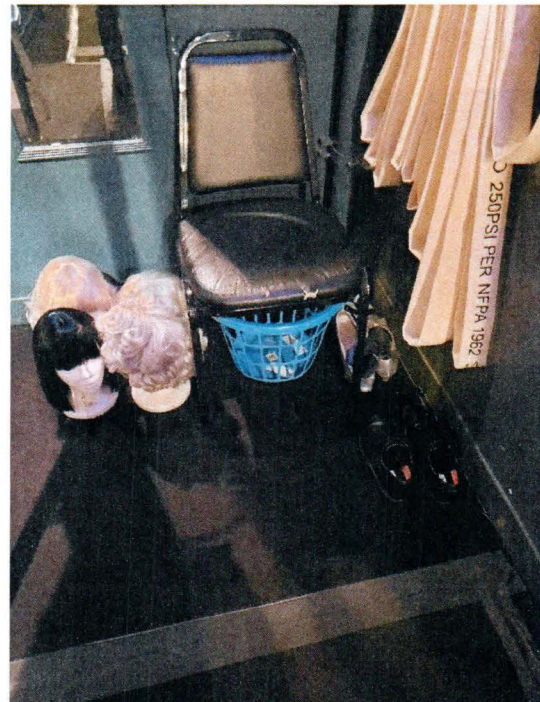
#### Station Set Up:

Black Cloche Hat on Back Wall, along with any extra hangers

GM's Silver Heels and Black #2 Dress Shoes and Socks against Back Wall

Prop Bin and Gun Safe under Chair

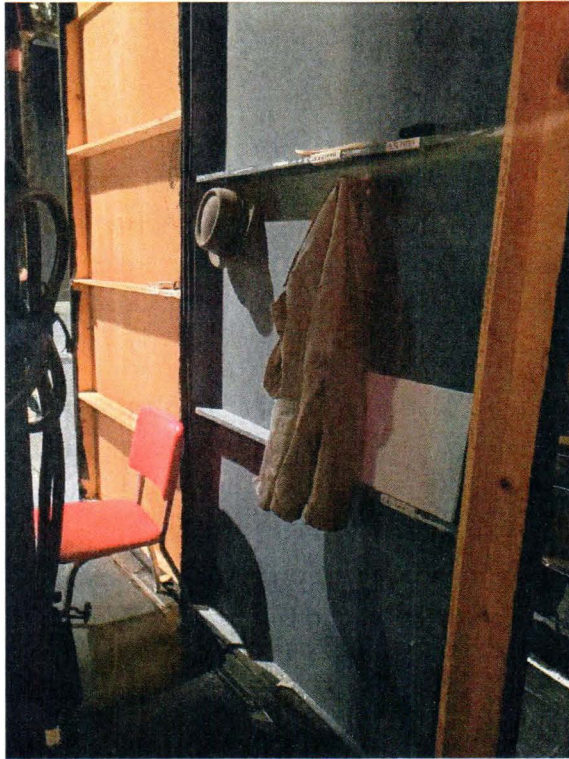
All Wigs under Mirror



Gun Case not pictured but should be in front of Prop Bin

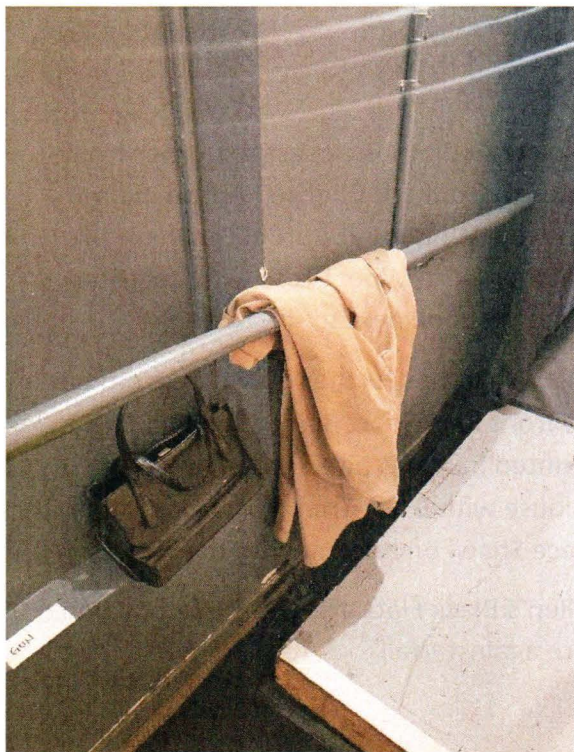






Back of R3 Flat:

GM's Detective Jacket, Hat and Eyepatch



Back Railing:

Bondo's Detective Jacket, right by the step  
up to the back stage entrance



## Stage Left:



### Back Wall:

GM Clothes closest to Corner from back to front is Cowboy Vest w/ Bandana, Henley, Dark Pullover Sweater, then Light Pullover with Cream Cowboy Hat on Hook closest to Corner

Stephen's Clothes from back to front is Doctor Coat, Rap, Serape w/Bandana, and Plaid Shirt on one Hook and Herringbone Blazer, Sweater-vest, Short Sleeve Button Down and Rubber Apron w/ Sailor Cap. Black Cowboy Hat and Gun Holster are on Hook furthest down.



### Side Wall:

Violetta's Clothes closest to Corner from back to front are Checked Apron, Rain Poncho, White Half Apron, Gingham Dress, Leather Skirt, Wool Dress with Lace Shawl hung on hook next to the rest

Ellen's Clothes further down are from back to front Rap, Short Black and Plaid Jacket, Printed Pants, White Scoop Neck shirt, Blouse with Black Trim, Polka Dot Skirt with Lace Shawl on hook next to the rest.

Ellen's Black Flats and GM's Cowboy boots are against Wall





Behind Prop Table:

Violetta's White Bonnet, Feather Hat, Pillbox Hat, and Chef's Hat

### Stage Right Quick-Change Cheat Sheet

Unless a costume is set away from the rest of an actor's clothes or is specifically listed in the Run Notes to be set elsewhere during the show, the quick change should happen at the Chair Station. It is easiest to move the QC pieces to the Back Wall Hooks in the order you'll need them before the change happens.

When doing a wig, it's best to hand it to the actor upside down with the back tag facing them.

When QCs are happening simultaneously with other actors running through its best to catch and pieces that are being taken off and dumping them on the chair or right in front of it to get them out of the flow of traffic.

When there's back-to-back changes between scenes I set for the next QC before cleaning up the previous one to make sure everything keeps running. There's plenty of time after Techno to clean up if you aren't able to get everything re-hung during the show.

Any clothes that come off that are Super Sweaty should be put in their own pile to be thrown in the wash, I keep GM's undershirt, Henley, Socks and Bandana in their own dirty pile every night.

I try to re-hang in a way that makes taking pieces backstage easier. Rehangng used pieces behind unused ones is best to keep everything organized. The director had a note that the side wall should be kept clear of empty hangers and anything that looks messy, so I've started moving any pieces and hangers that go there to the Back Wall after they've been used. After Ventriloquist there isn't a need for a Back Wall Hook for a QC so that's usually when I move things over.

## Stage Right Run Notes

### Top of Show

- Pink Chair: R3 against flat
- Green and Orange Chairs R4 against flat (green ahead of orange)
- Blue Chair R4 between light poles with back facing fire lane

### Dionne

- R4: Catch pill bottle from Ellen after she shakes it three times and gets up from her chair
- Violetta comes with Blue chair, she sets it against R3 flat
- Stephen Jacket change:
  - Be ready with Tux Jacket w/ White Scarf in back hallway
  - Take Top of Show Jacket from him
  - Add Cross Pin to Top of Show Jacket
- Ellen QC:
  - Take off Top of Show dress
  - Underdress Talk Show Dress
  - Add Green Detective Dress, Black Pleather Coat, Black Wig, Headscarf
- Move Ellen's Green Chair from Fire Lane to Between R4 Light Poles
- Set Gun from Lockbox to Back Wall Ledge

### Detective Drama

- GM QC during Ellen/Bondo Scene
  - Make sure Blue Chair is in the middle of the R3 Flat so there's room for the QC
  - Add Eye Patch, One-Armed Green Leather Jacket, Pork Pie Hat
  - Set Green Chair from Between Light Poles to R4 Flat
- Once done with GM QC go to Back Hallway and clean up Ellen's Jacket and Scarf
- After Violetta's Entrance with the Gun: Set Stephen's Top of Show Grey Suit Jacket and Ellen's Top of Show Dress against the Canvas in Back Hallway, as close to the Opening as possible without being in sightline. Ellen's Dress should be folded up inside Stephen's Jacket in a way that he can grab both items together at the top of the jacket.

### Detective into Coffee Talk

- QC Ellen:
  - Take off Green Detective Dress
  - Add Blonde Wig

### Televangelist/Knee Play:

- Bondo Comes off near end of Televangelist, take Top of Show Jacket, Give Cream Sweater



#### End of Family Show:

- R4: Catch Orange Chair from GM, set aside, move back out of the way
- R4: Bondo sets Blue and Pink Chairs between Poles and comes through to R3
- Take Cream Sweater from Bondo
- R3: Move Blue and Orange Chairs to R3 after Bondo moves through:
  - Blue against Flat in the middle with seat facing the stage
  - Orange Behind Blue with seat facing the stage
  - Set Straw Hat on R3 Hook
- R4: Set Pink Chair between Light Poles w/ Back facing Stage, set Ellen's Black Bootie Heels on seat

#### End of Knee Play 2:

- QC Ellen:
  - Take off: White Blouse w/ Black Trim, Polka Dot Mini Skirt
  - Add: White and Black Dress w/ Bamboo Line Print, Black Bootie Heels, Hair tie and White Hairbow
- Once Ellen is done with QC, move the Pink Chair closer to the stage so there's room for another chair between the Light Poles.

#### Western Entrance:

- Follow Ellen to R3
- Take Orange Chair from Flat and stand out of sightlines with it
- Come forward Up from Light Pole to give Ellen the Orange Chair on Sleepwalker Line (Hold Chair with Seat facing Stage and tilt it so she can drag it with her)

#### During Western:

- Set Ventriloquist QC Clothes for GM and Violetta:
  - GM Clothes on Back Wall Hooks
  - Take the hangers off of Violetta's Dress and Bloomers and have them hung on the R4 Hook, Wig on Ground in front of Mirror

#### End of Western:

- Catch Green Bottle from GM as he comes off, set under your Station Chair and stand against Back Wall as he comes through with Orange Chair
- Have the Ruffle Necktie ready to put around his neck as soon as he gets his shirts off, then help him into the Jacket.
- QC GM:
  - Take Off: Cowboy Hat, Vest, Henley, Undershirt, Necktie, Boots
  - Add: Jabot Ruffle Necktie, Sequin Jacket, Black Dress Shoes
- QC Violetta:
  - Take Off: Bonnet, B&W Gingham Dress, White Heels
  - Add: Sequin Dress, Curly Grey Wig, Bloomers

- Stephen will come with the Gun and a bag of clothes from SL including Violetta's Top of Show look, GM's Patterned Dress Shirt, and Ellen's Top of Show Jacket.
  - Set Gun in Lockbox
  - Hang GM's Shirt with his Undershirt on the Mirror
  - Hang Violetta's Skirt and Sweater and set behind her Rap Clothes on R4 Hook, have the Sweater buttoned up already
  - Keep Ellen's Jacket on your Station Chair

During Ventriloquist:

- Set Orange Chair in Back Hallway against Stage Platform and Back Wall
- Set Drama QC Clothes for GM and Violetta:
  - GM Shift Dress Unzipped and Laid Out on Back Rail next to Fire Escape with Sleeves Accessible, Silver Heels under Orange Chair, Blonde Bob Wig on top of Orange Chair Upside Down with Wig Back facing towards you
  - Violetta Pleated Striped Skirt, Black Collared Blouse and Black Cloche Hat draped on Fire Door Rail (Top Button of Blouse undone), White Heels against Fire Door

End of Ventriloquist (Chet):

- QC GM:
  - Take off: Sequin Jacket, Jabot Ruffled Necktie, Dress Pants, Dress Shoes
  - Add: Black Shift Dress (Zip) w/ White Trim,
  - He puts on the Silver Heels and Blonde Bob Wig, make sure the wig is straight before he goes on
- QC Violetta:
  - She comes with Green Chair, don't move from where she puts it down
  - Take Off: Sequin Dress (Unzip), Curly Grey Wig, Bloomers
  - Add: White Sleeveless Blouse w/ Black Collar, Pleated B&W Striped Skirt, White Heels, Black Cloche Hat, Black Purse
- Stand against Back Wall to be out of the way when not Zipping, Unzipping or Straightening Wig
- Snap Stephen's Bowtie onto his Shirt
- Put Apron and Green Can into Prop Bin

During Dating Game:

- Set GM and Violetta Rap QC Clothes
  - Violetta R4 Hooks
  - GM Back Hallway draped on Fire Door Rail, Dress Socks/Shoes against Fire Door
  - Clean up Previous Change after Rap is set

#### End of Dating Game:

- GM and Violetta come off with Green and Orange Chairs, she sets Green R4 against Flat, he sets Orange next to Fire Escape Door to use during Drama Change
- QC Violetta:
  - Take Off: White Sleeveless Blouse, Pleated B&W Shirt, Black Hat, Purse
  - Add: B&W Print Shorts, White Sheer Collared Shirt
- QC GM:
  - Take Off: Black Shift Dress, Silver Heels, Blonde Bob Wig
  - Add: B&W Print Shorts, Black T-Shirt, Socks, Dress Shoes

#### During Rap:

- Set GM and Violetta Drama QC Clothes:
  - GM Dress Pants (with belt still on them) draped open on Back Hallway Rail (Close to Fire Door), Patterned Dress Shirt and Undershirt on the back of the Orange Chair. Have them set facing down with the Undershirt on top of the Dress Shirt

#### End Of Rap:

- QC GM:
  - Take Off: B&W Print Shorts, Black T-Shirt
  - Add: Top of Show Dress Pants, Patterned Dress Shirt
  - Hold his Pants for him to take from you, check that his shirt is tucked in the back
- QC Violetta:
  - Take Off: B&W Print Shorts, White Collared Shirt
  - Add Top of Show Knit B&W Arrow Print Skirt, Cream Cardigan, White Heels

#### Drama:

- Stephen comes with Pink Chair, set against R3 Flat
- Set Ellen's Top of Show Jacket on R3 Hook when setting Pink Chair
- GM comes off near end with Orange Chair, take from him and follow behind him when he moves to R3, set Chair against Flat behind him with seat facing Upstage
- Ellen also comes off and takes off her Black Heels against Side Wall

#### McLuhan's Aria:

- Stand against Wall out of Sightlines.
- GM will drag the Table from onstage to R#, up from Light pole. Make sure it is far enough back that you can stand with it and not be seen.

Techno:

- After GM and Ellen enter, lift the table and carefully move it downstage around the Light Pole. Set it against the R3 Flat in the middle of the Flat.
- Hand off Green Bowl with Apron in it to Violetta from Center Back Opening (Stand as close as you can without being in sightlines) Take Blue Umbrella from Violetta
- Take Green Bowl from Stephen in R4
- Clean up anything left around the station

Be proud of yourself.



CITY THEATRE  
PITTSBURGH, PA

The Medium  
Backstage Left Plot  
As of 2/2/22

Top of Show

- Cue Bondo ULC
- Prep Veiled Hat on bottle
- Put bite light in pocket

During Dionne \*\*Hang out behind table until needed\*\*

- Catch Pink Chair from VP in US L3 and put in UL corner
- Strike GM Jacket from L1 to hook
- Strike EL jacket from L1 to laundry bag

During Cyberspace Lounge

- Help VP change into Detective Drama Costume
  - Strike Skirt and Cardigan to laundry bag
  - Add Long Sleeved Black Dress, Black and White Striped Skirt, Veiled Hat
- Move Green Bowl to Position #2 on prop table

During Detective Drama

- Prep VP Feathered Hat on Hook
- Help SW w/Costume Change
  - Strike Jacket to Hamper
  - Strike Button Down Shirt to hamper
  - Strike Tie to prop table
  - Add Rubber Apron, Sailor Hat, and Gold Framed Glasses
- Strike Orange Book from ULC to prop table
- Strike Cigarette Holder from ULC to hamper

### After Detective Drama (into Talk Show)\*

- Catch Orange Chair and Handbag from VP in US L3
- Set Orange Chair in DS L4, facing onstage
  - Set Rhinestone Glasses on Orange Chair
- Strike Handbag to hook
- Catch SW TOS Jacket, EL TOS Dress, Detective Hat, Gun, and Wooden Spoon, from SW
  - Strike Wooden Spoon to hamper
  - Put Gun on prop table

### During Talk Show

- Help SW w/Costume Change
  - Remove Rubber Apron, Sailor Hat, and Glasses
  - Strike Glasses to hamper
  - Add Short Sleeved Button Down, Tie, TOS Jacket, and Orange Book
- Prep Pink Chair in DS L3, Facing US
- Catch Jacket, Eye Patch, tie, and Hat from GM
  - Put Eye Patch in hamper
- Catch Bottle from GM and put in Green Bowl on prop table
- Help GM w/Costume Change
  - Remove Button Down Shirt
  - Add Rugby Shirt
- Set Shawls on Pink Chair - Help GM w/these
  - VPs on right side, top away from GM
  - ELs on left side, top away from GM
- Prep EL Costume on UL Hook
  - Blouse Hanging
  - Skirt unzipped on railing
  - Flats on floor
- Prep SW Sweater Vest on ULC hook
- Prep Woodblock and Scissor on ULC ledge

### During Televangelist

- Strike Trench Coat, Detective Hat, Rubber Apron, Sailor Hat, One Armed Jacket, and GM Hat to hamper
- Hang EI TOS Dress on SL hook
- Strike GM Button-Down to laundry bag

### During Knee Play

- Strike Rhinestone Glasses to hamper
- Help VP w/Costume Change
  - Strike Dress, Hat, and Shawl to hamper
  - Add Black and White Short Sleeved Dress and Half Apron
- Help EL w/Costume Change
  - Strike Dress, Shawl, and Wig to hamper
  - Add Polka Dot Skirt, Blouse, and Flats
- Catch Orange Book from SW and put in hamper
- Help SW w/Costume Change
  - Hang TOS Jacket on hook
  - Add Sweater Vest
  - Hand off Gun and Hanky

### Into Family Show

- Help GM into Sweater ULC
- Catch Pill Bottle from GM

### During Family Show

- Hit Woodblock 3x
- Strike Pill Bottle Shaker to hamper
- Hang SW News Brief Jacket on ULC railing (opening SR, Collar on top)
- Strike Lapel Pin from TOS Jacket to prop table



### Into News Brief

- Catch bowl from VP (Stand DS of L2)
- Hand off Rain Poncho and Umbrella to VP
- Remove Tallboy Green Can and Handkerchief from Bowl
  - Move Tallboy Green Can to Shelf DS side of L3
  - Strike Handkerchief to hamper
- Add Blue Can, Small Green Can, and Chef Hat to Purple Bowl
- Strike Gun to prop table from ULC

### During News Brief

- Prep GM Western Costume on DS hook (take off hangers)

### During Knee Play 2

- Catch Umbrella and Poncho from VP L4
- Hand off Purple Bowl and Chef Hat to VP L4
  - VP Remove Half Apron and add Full Apron
- Catch Cue Cards, Clipboard, and Pencil from SW L4
  - Strike Cue Cards and Pencil to hamper
  - Strike Clipboard to prop table

### During Cooking Show

- Help SW w/Costume Change
  - Strike News Brief Jacket to Hamper
  - Strike Tie to prop table
  - Strike Short Sleeved Button Down Shirt to Hook
  - Add Flannel Shirt, Holster, Gun, Serape, Bandana, Hat
- Help GM w/Costume Change
  - Grab Pipe out of Coat Pocket
  - Strike Sweater and Rugby Shirt to hamper
  - Add Henley Shirt, Vest, Bandana, Hat, and Boots
  - Strike Button Down to laundry bag
  - Strike Tie to prop table



### Into Western

- Hand off Green Bowl and Hat w/Ribbon to VP in L3
- Catch Purple Bowl and put on prop table

### After Western

- Hand off laundry bag and Catch Table from SW ULC and put Table next to prop table (US of curtain)
- Help EL w/Costume Change
  - Strike Dress to hamper
  - Add Pants, T-Shirt, and Jacket

### During Ventriloquist

- Prep Green Chair (facing US) and Handbag in DS L3
  - Pull corner of Hanky out of right side of handbag (seam in back)

### Transition into Dating Game

- Catch Wig from VP DS L3
- Catch Hat from MM between L3 and L4

### During Dating Game

- Prep SW Shorts and Black Short Sleeved Button Down on DS hook
- Make sure sleeves of White Short Sleeved Button Down are pulled out (not inside out)

### During Rap

- Catch Pink Chair from EL L4, strike to UL corner

- Help EL w/QC
  - Strike Jacket, Blouse, and Skirt to hamper
  - Add Large T-shirt and Newspaper Shorts
- Catch MM Jacket ULC, take Remote out of pocket, and store Jacket and Remote UL next to table
- Prep Table on ULC platform
- Prep Blue Chair in L4, facing SR
- Prep EL Heels under chair
- Move SW Pants to US hook
- Help EL w/QC
  - Strike Large T-shirt and Newspaper Shorts to hamper
  - Add Black TOS Dress and Heels
- Help SW w/QC
  - Strike Black Short Sleeved Button Down and Shorts to hamper
  - Add Pants, Short Sleeved Button Down, Tie, Lab Coat, and Clipboard

#### During Drama

- Hand off Pink Chair to SW in L4 (hand off by the seat)
- Strike VW Shoes to hamper
- GM add TOS Jacket and Tie
- GM Strike Shoes and Socks

#### During Aria

- Wait for VP to pass, then wait for SW in L4
- SW add TOS Jacket in L4

#### During Techno

- Toss Umbrella to VP ULC

- Move Blue Chair into walkway for GM to get through, then restore chair to DS L3 (move quickly)
- Strike Apron from L3 to hamper
- Set MM Jacket and Remote on ULC platform
- Hand off Blue Chair to SW over table DS L3
- Strike Table to DS of lights in L3

# Spikes

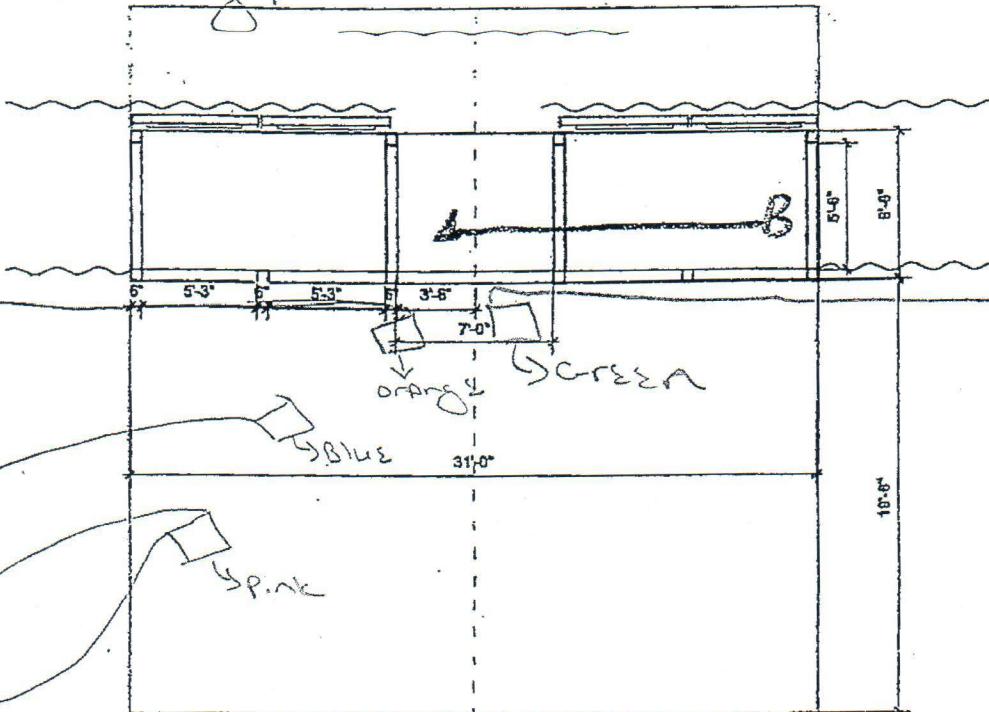
#1 Pg 4

14' 1/2" ←  
dn from post  
+ 2 1/2" Rt  
of post

3' 10" up  
0' 9" ←  
+ Rt

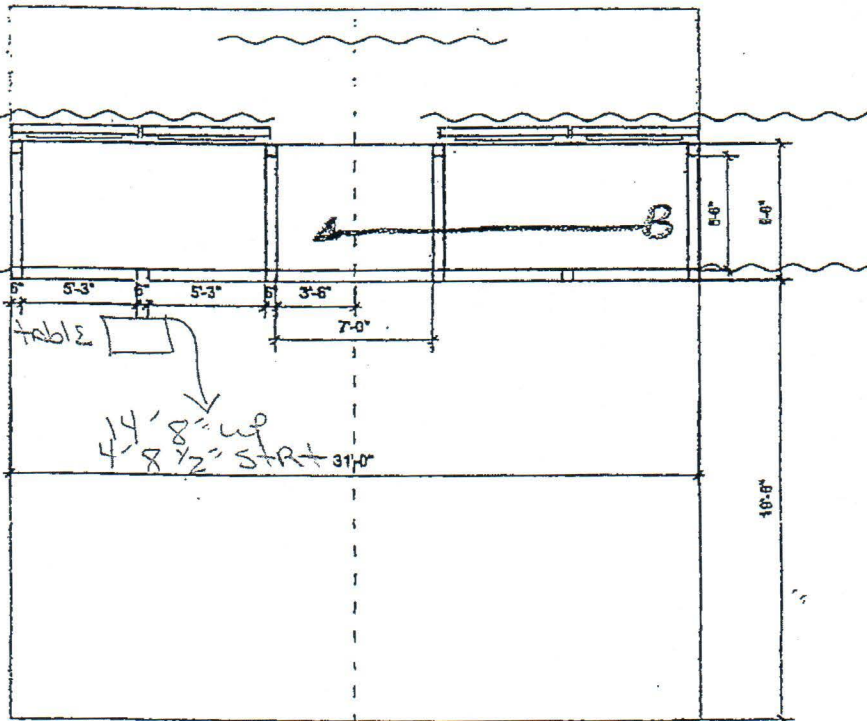
3' 6" up ←  
3' 9 1/4" Rt

7' 2" up ←  
14' 5 1/2" Rt



→ 14' 6" up +  
6" Rt  
(Set flat on)

#4 Detective Brand  
Pg 12

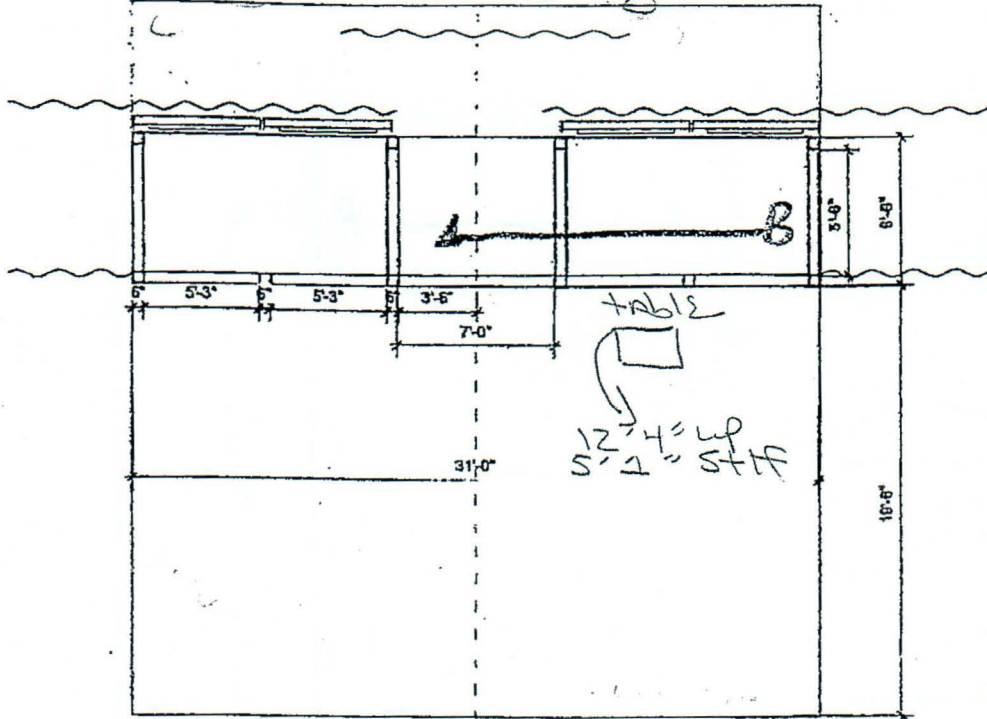


14' 8" up  
4' 8 1/2" S-Rt 31' 0"

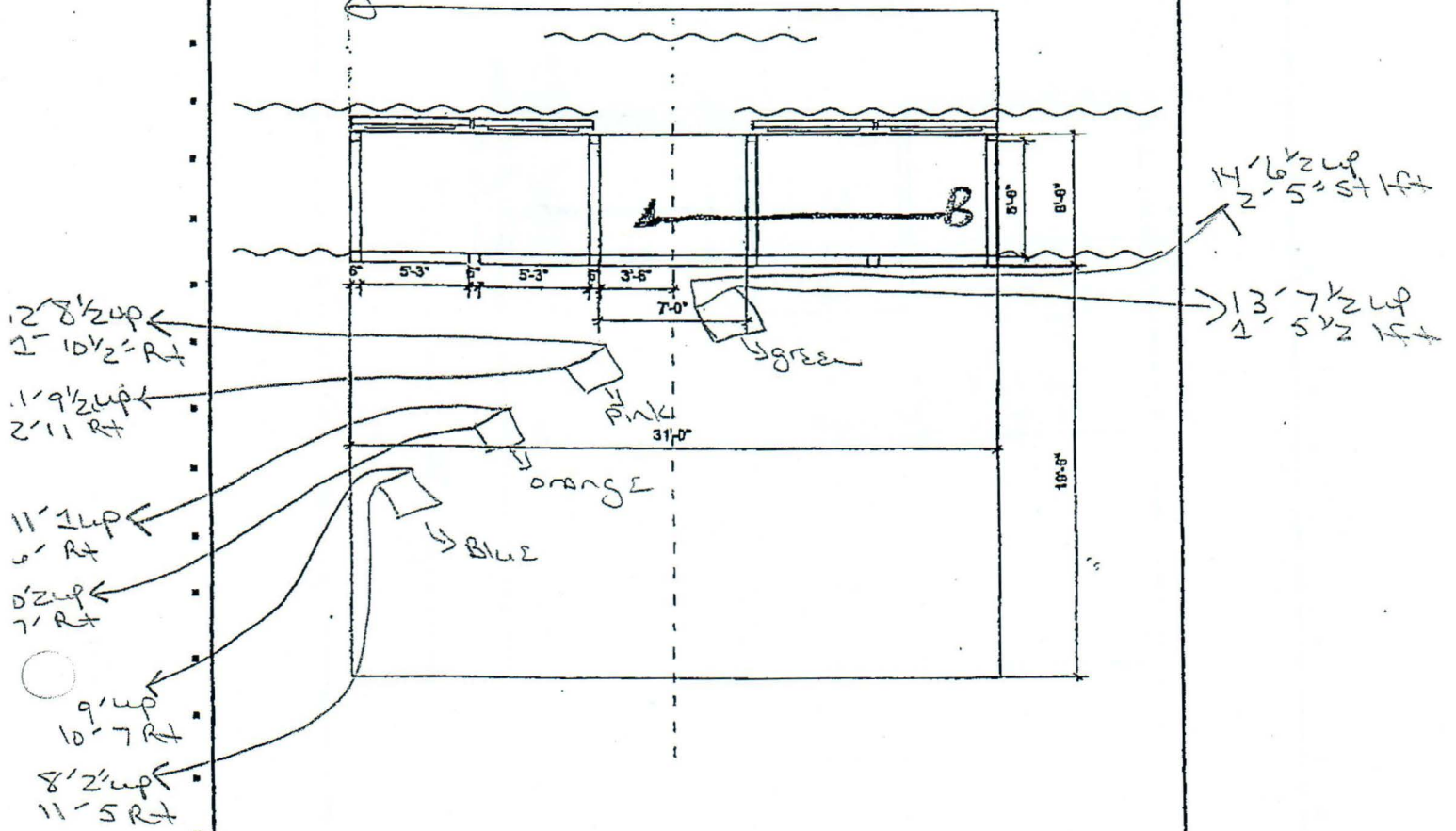


# Spikes

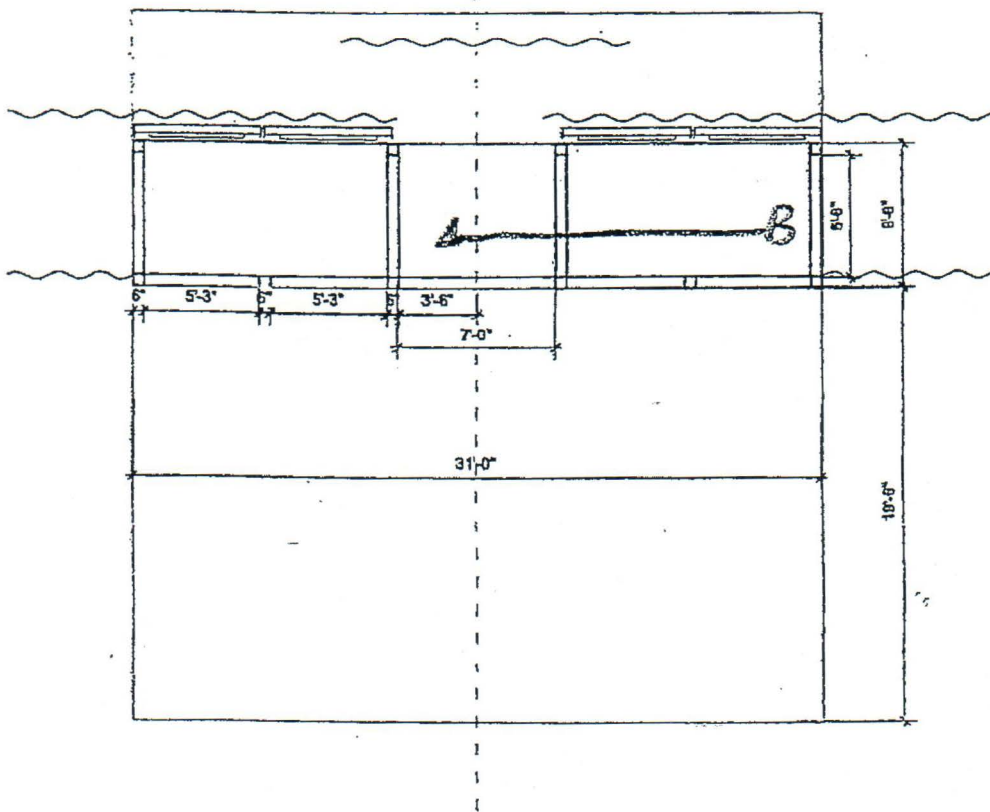
#8 Pg. 23 For Family Show



Pg. 57 The Future

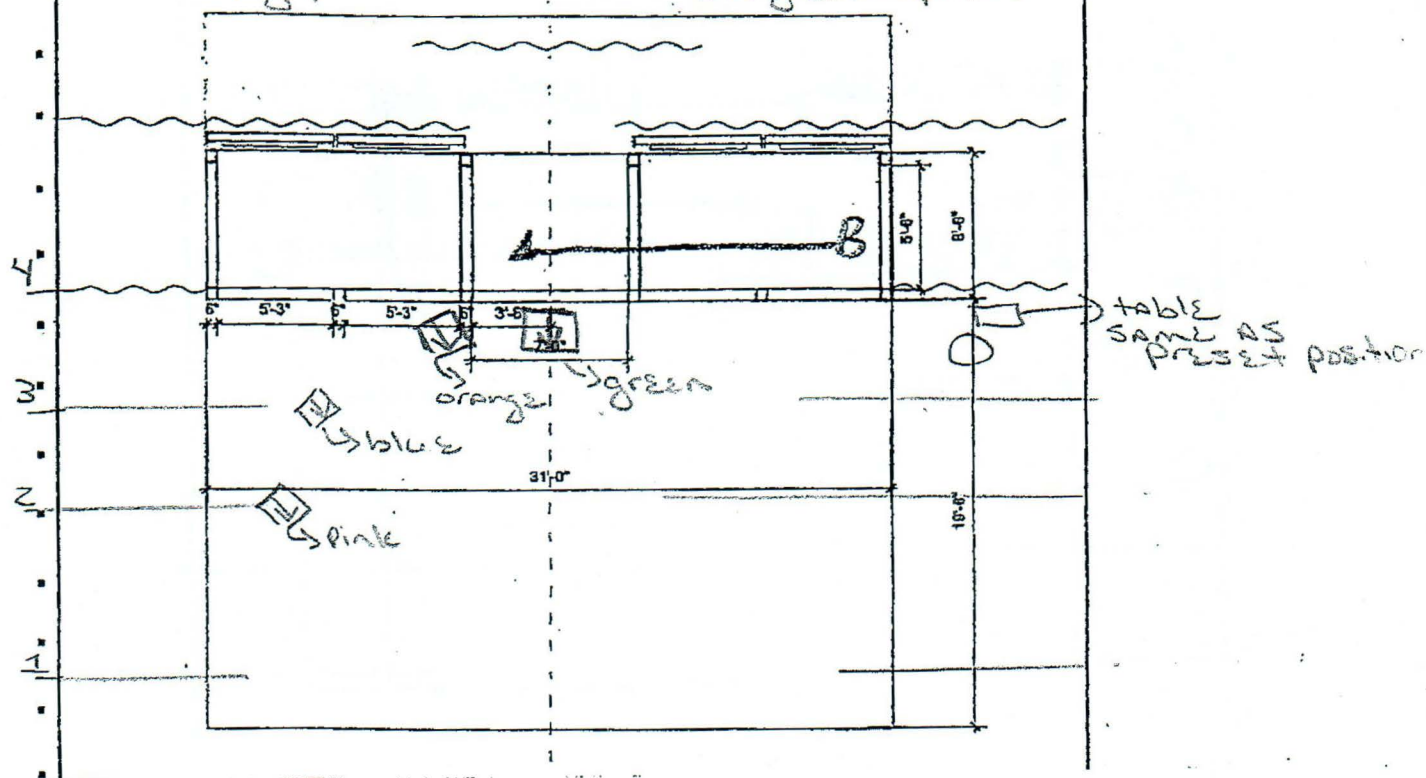


1

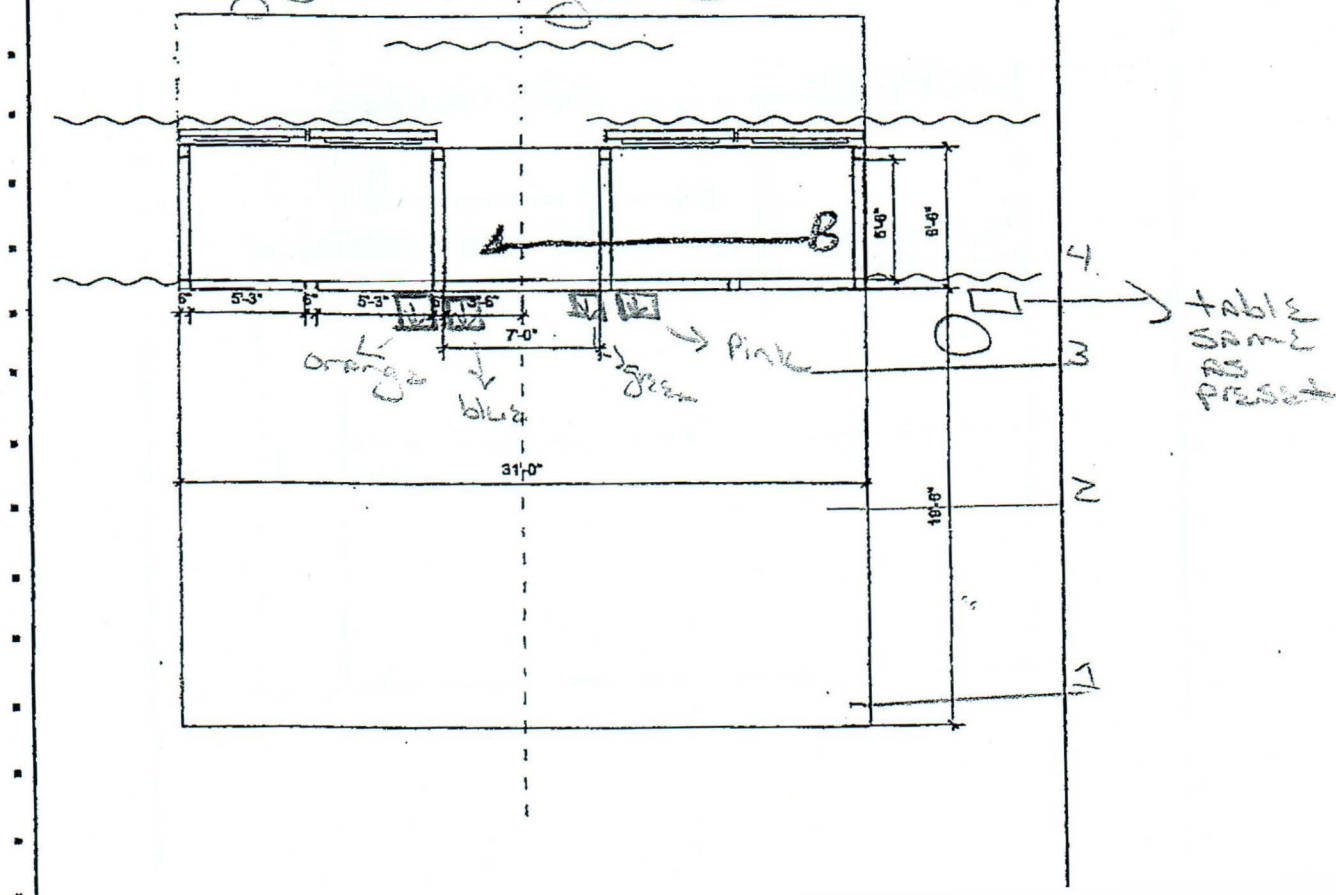


②

DK green spikes



# 2 POD Firing Line





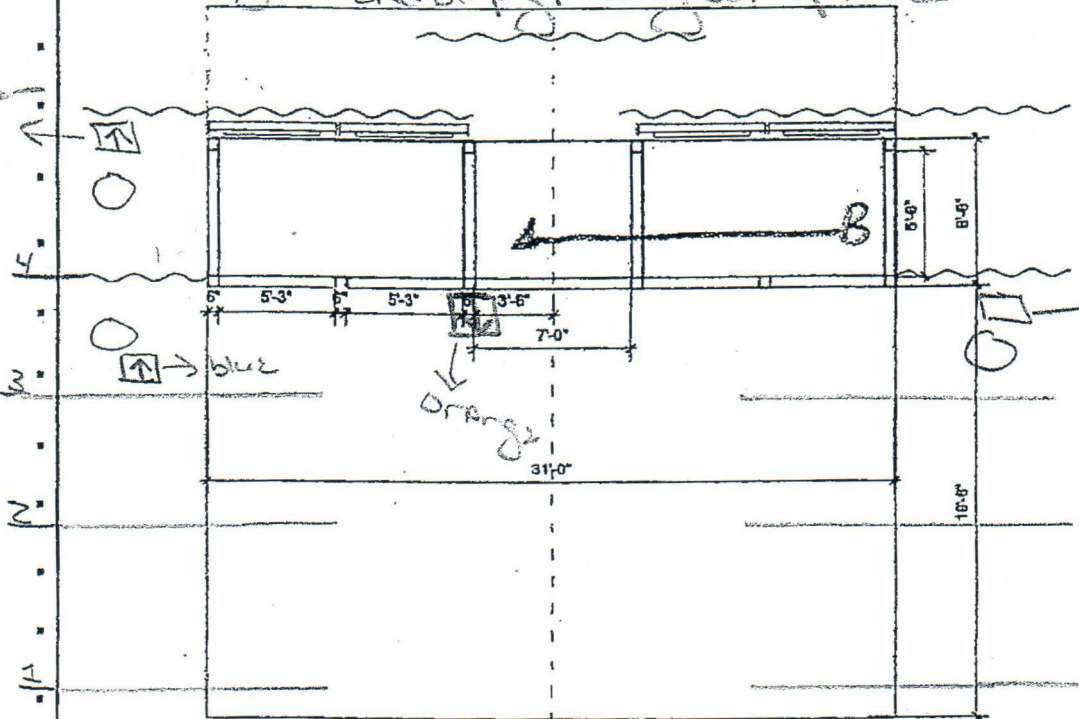
W

#3

Pg. 10 End of Pg. Cyber Space

Pink

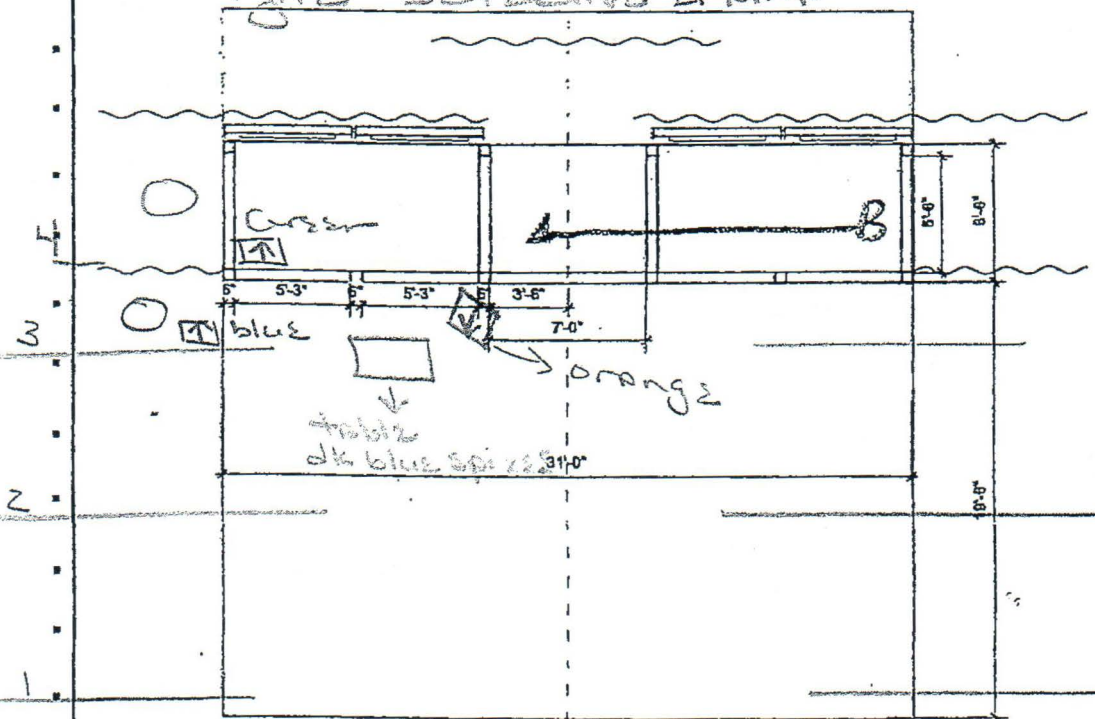
green



#4

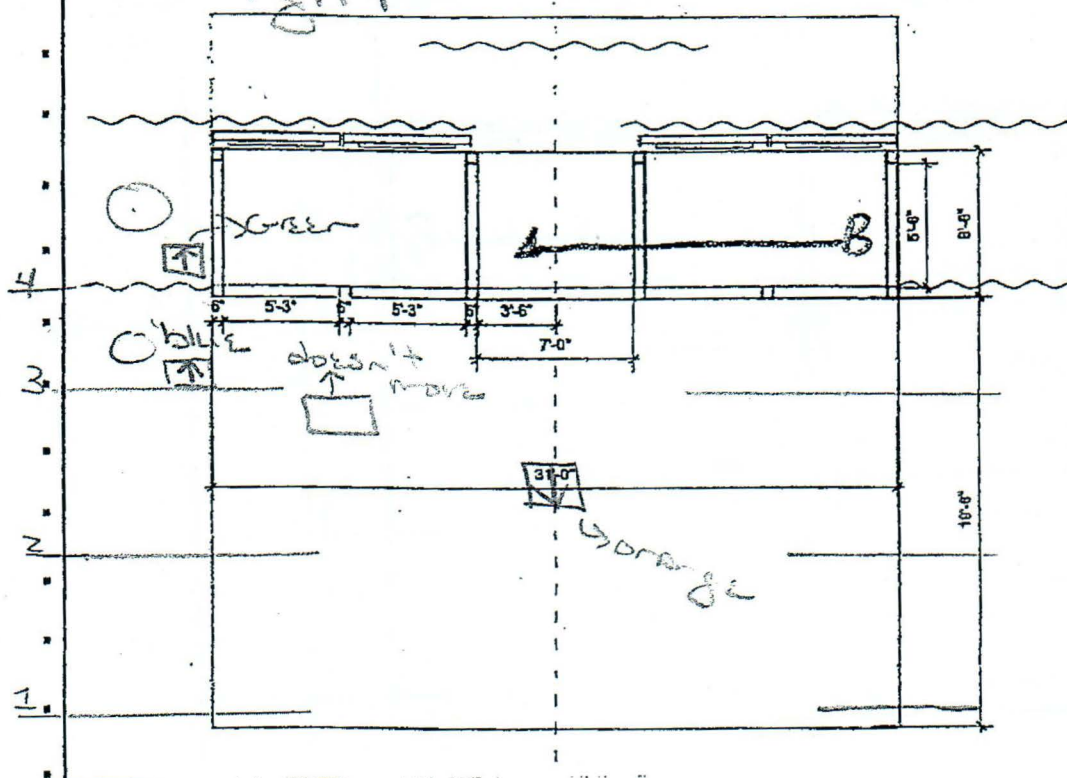
Pg. 12 Detective Drama

Pink



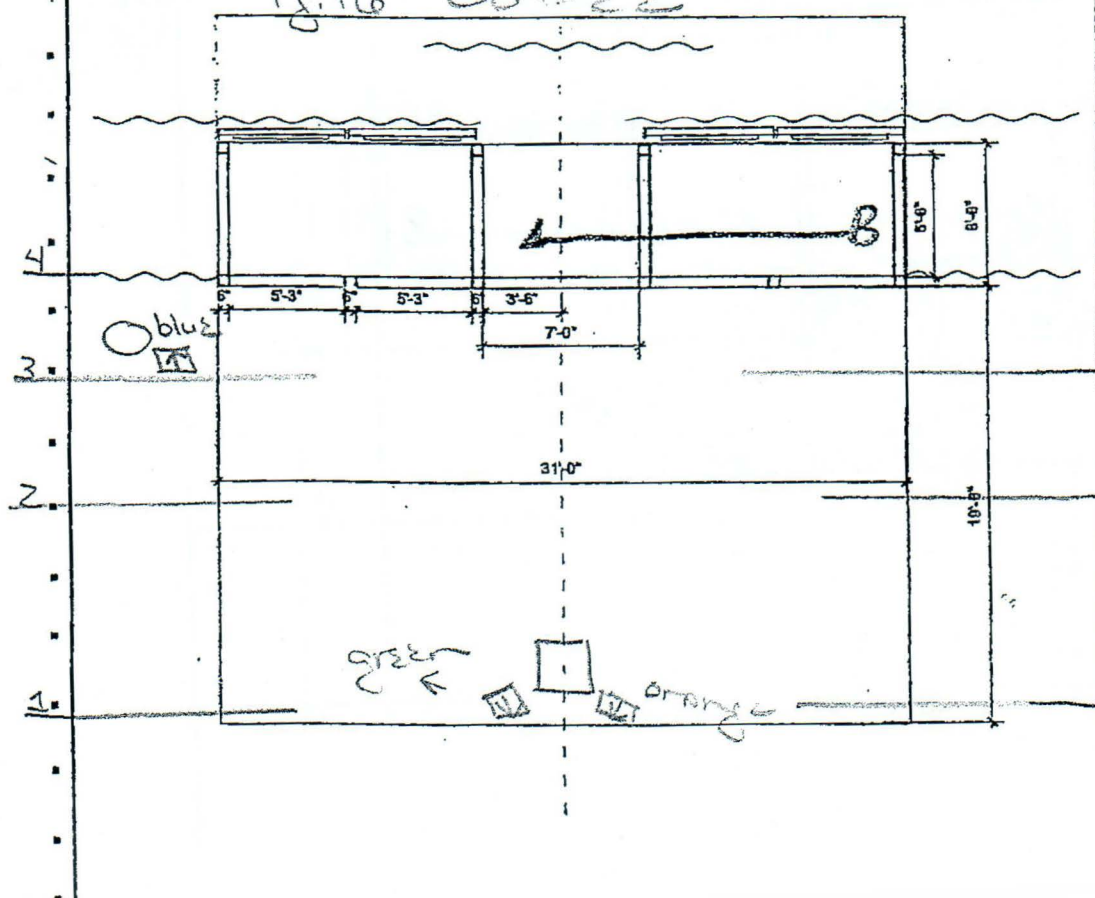
4

 Pink



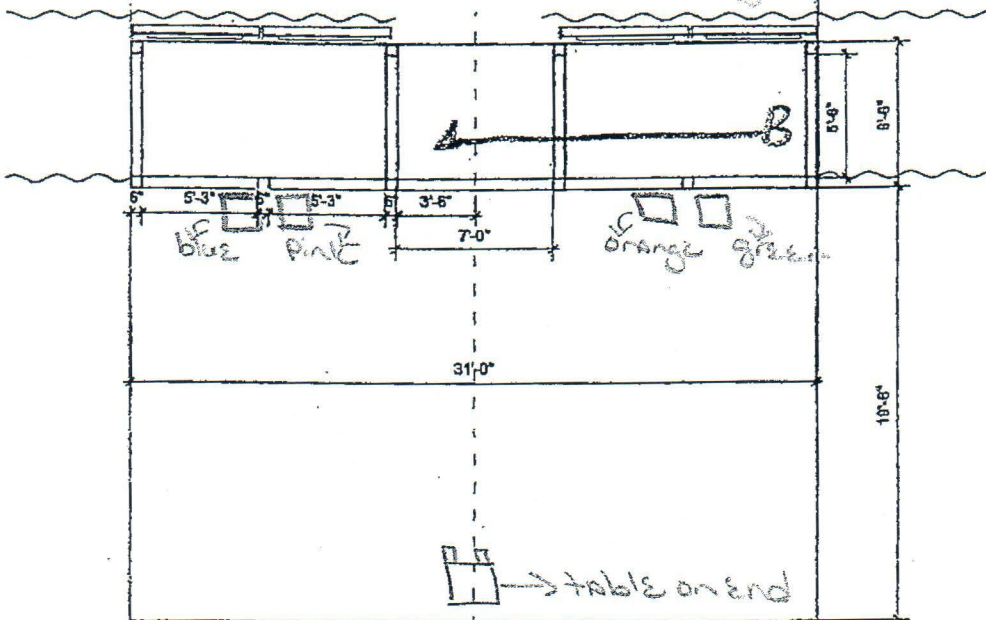
#6 Pg. 16 coffee

Pin

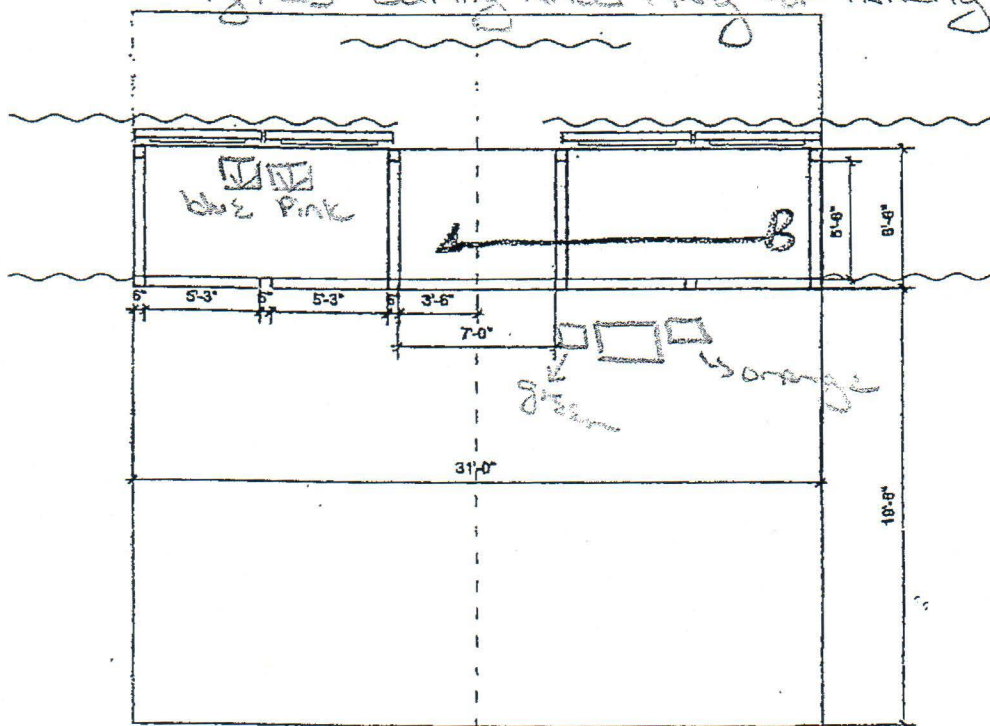


# #7 Pg. 20A Tele. Evangelist

All chairs face up stage



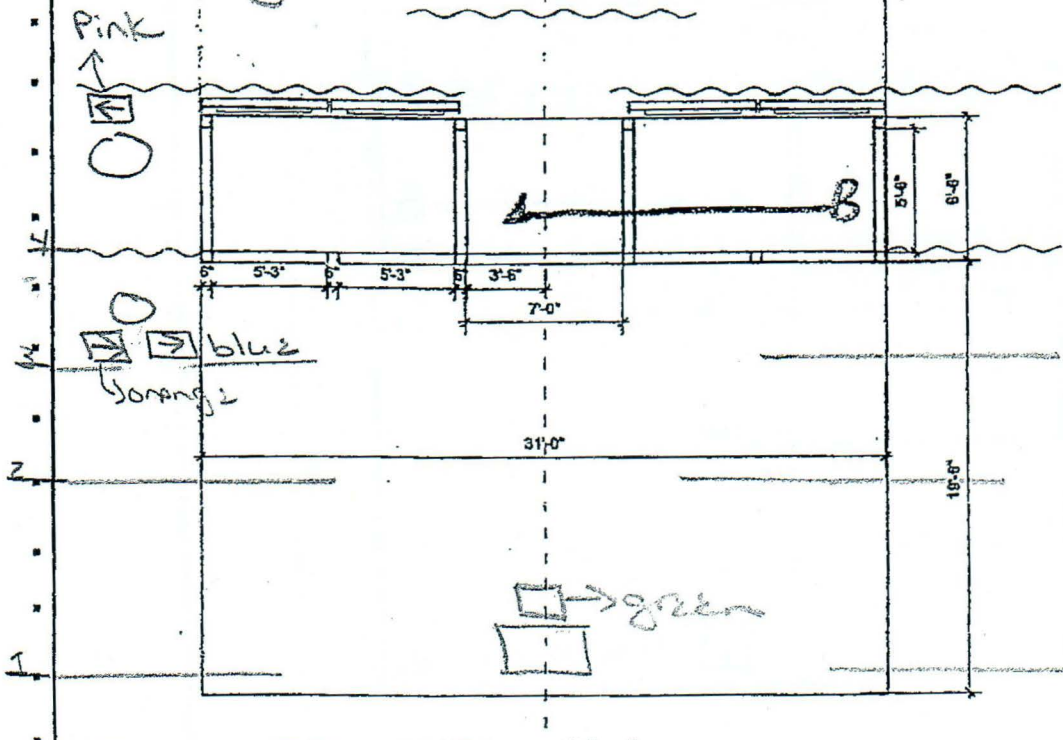
# #8 Pg. 23 During Kneel Play for Family Show



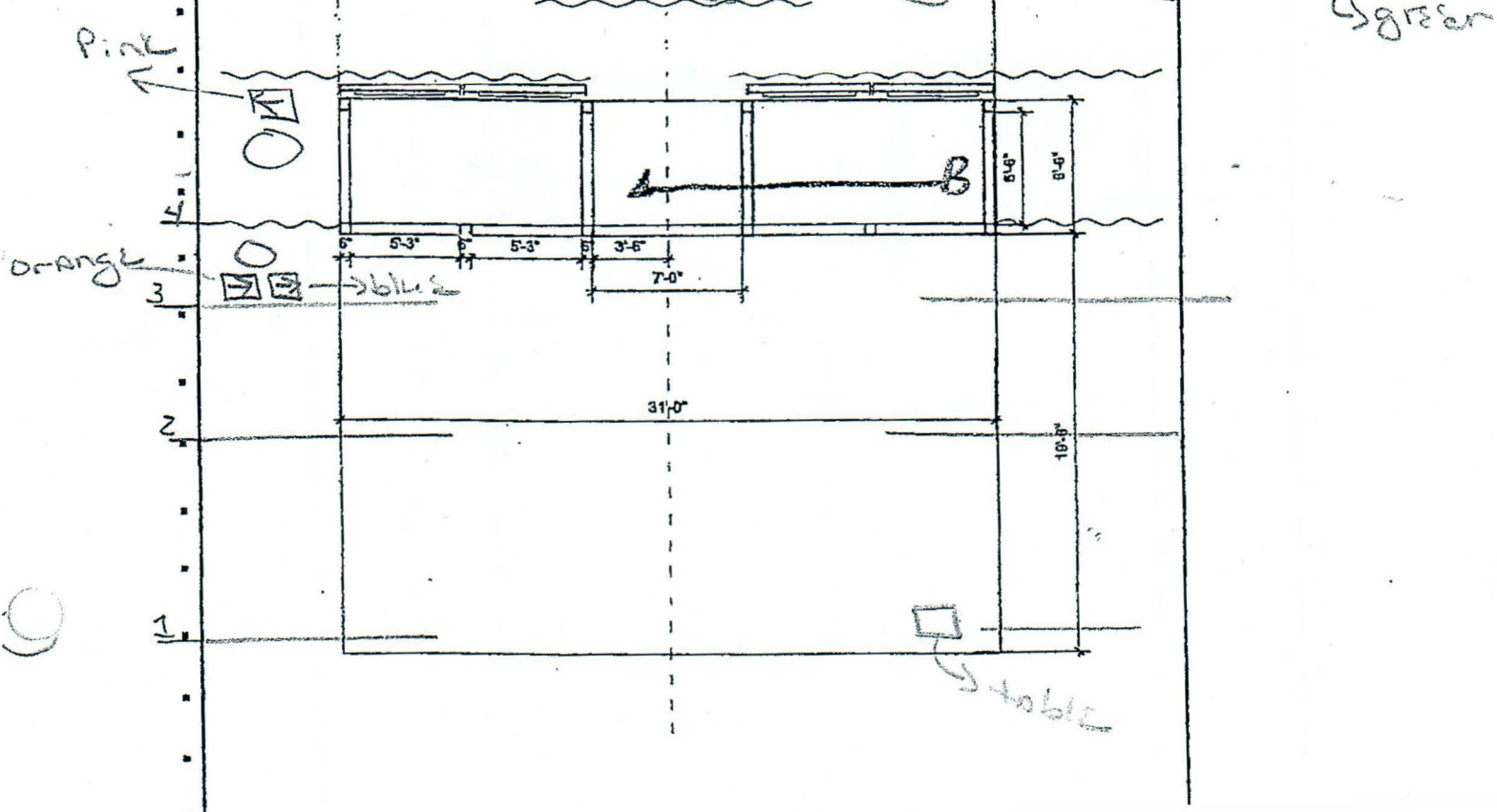
Only Table  
Spiked



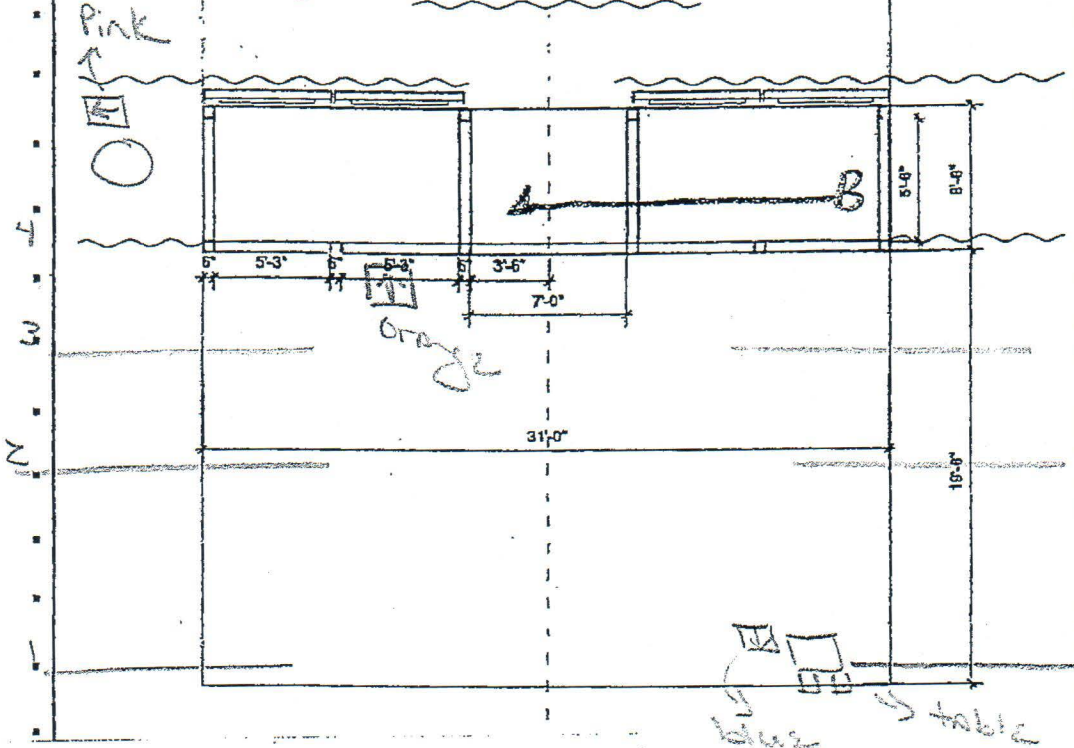
#9 Pg. 27 Newsbrief



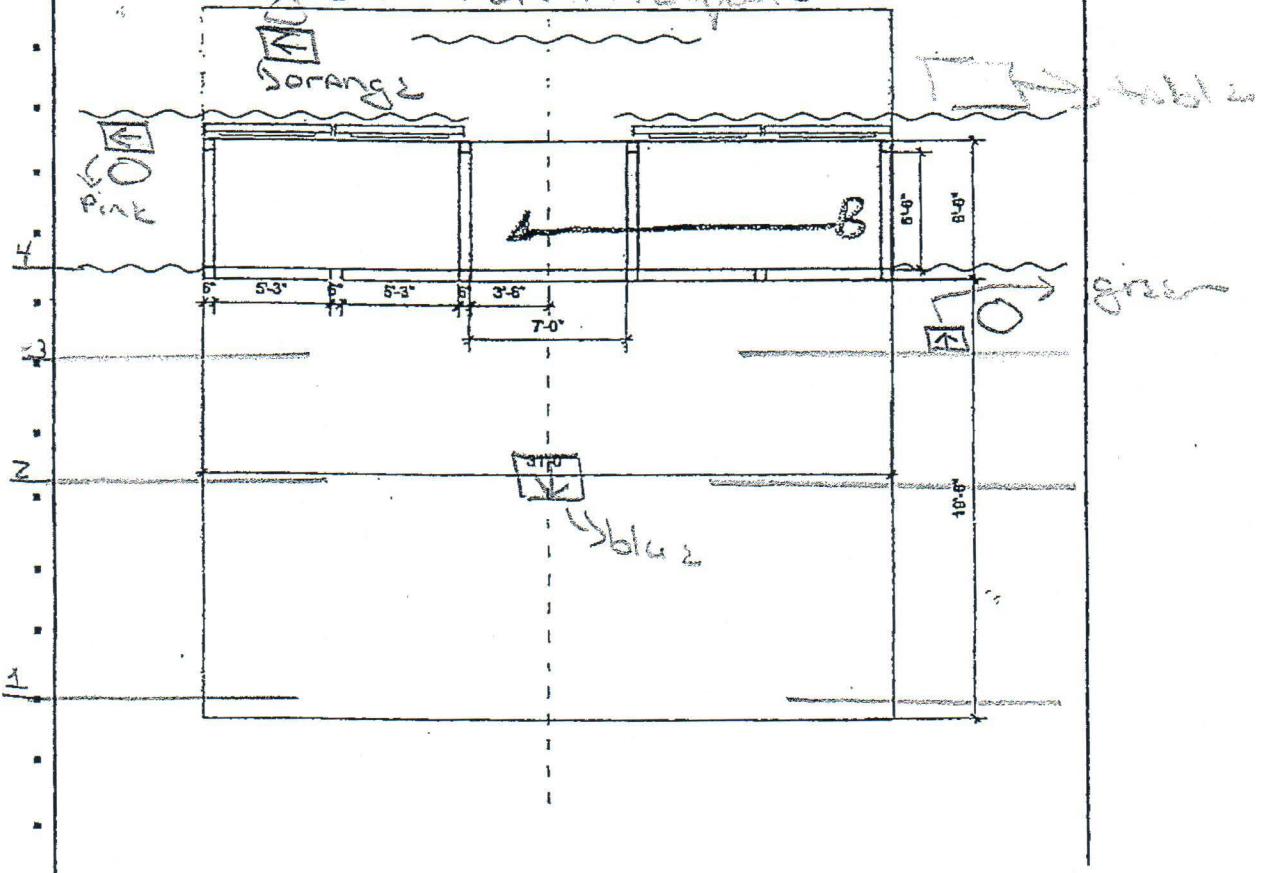
#10 Pg. 31 During Knee Play for cooking show



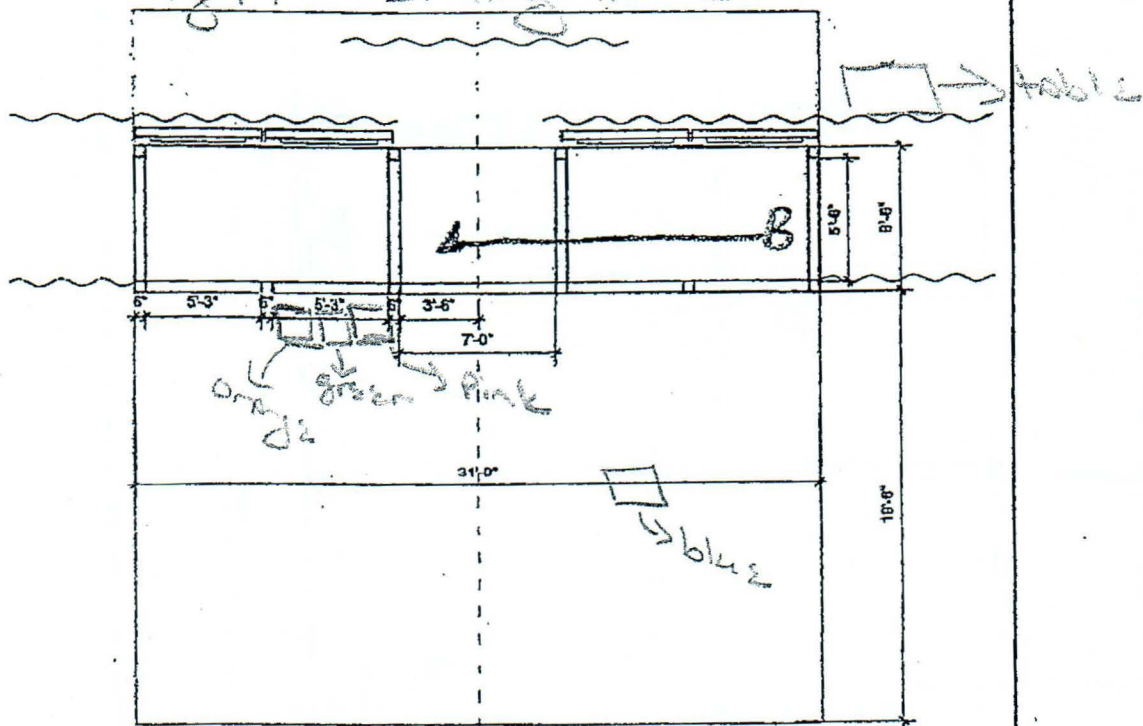
#11 Pg 34 Western



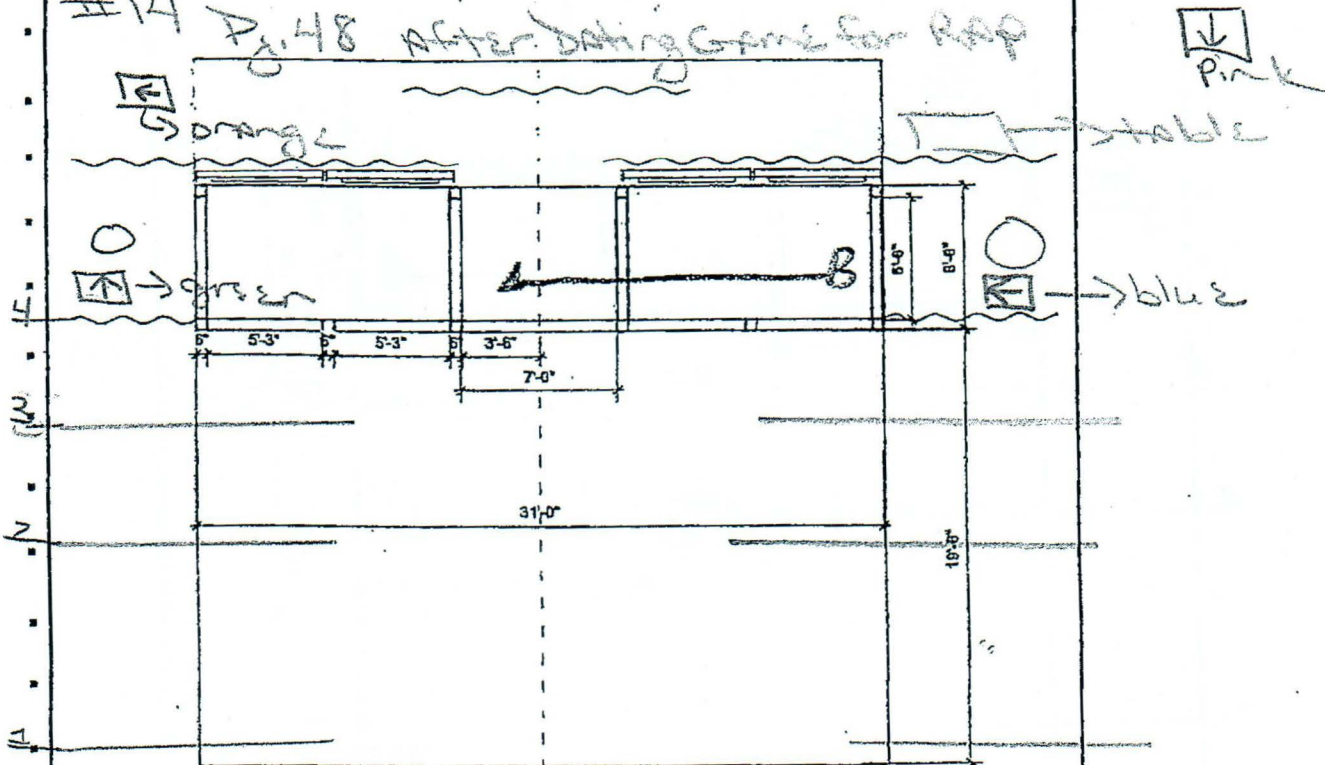
#12 Pg 37 Ventriloquist



#13 Pg 44 Dating Game



#14 Pg. 48 AFTER DATING GAME FOR RAP





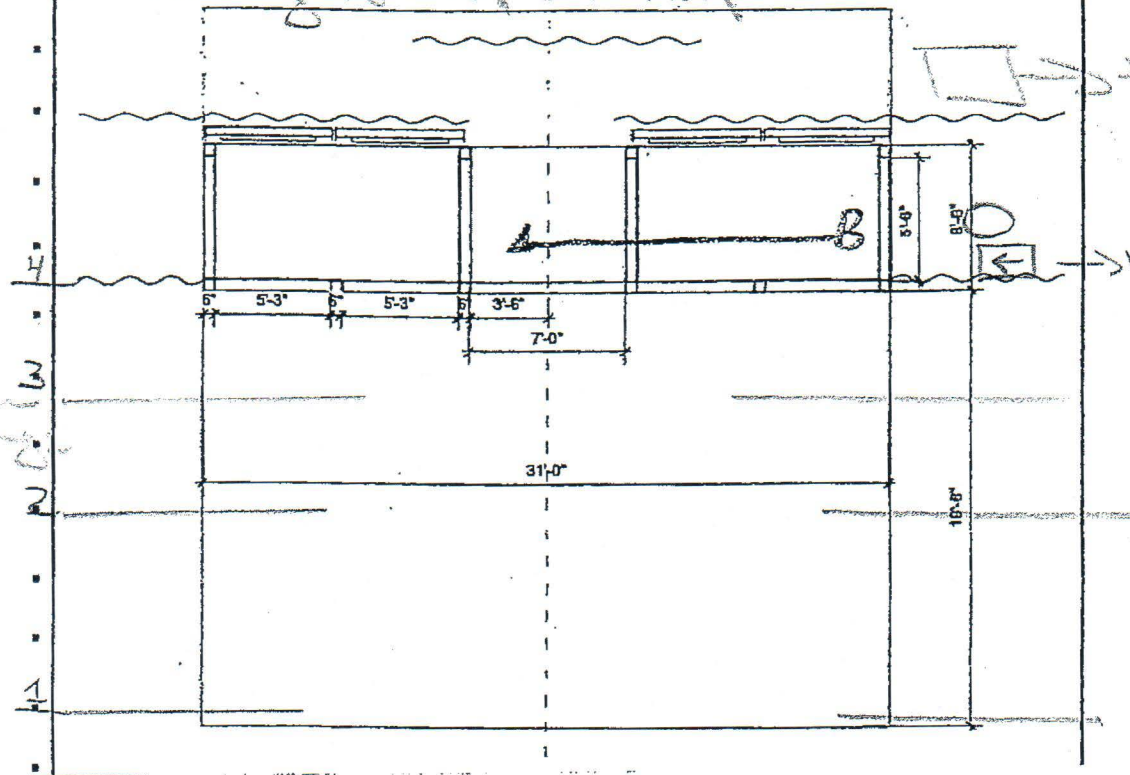
#15 Pg 48 TOP OF RAP

pink

table

blue

green  
orange



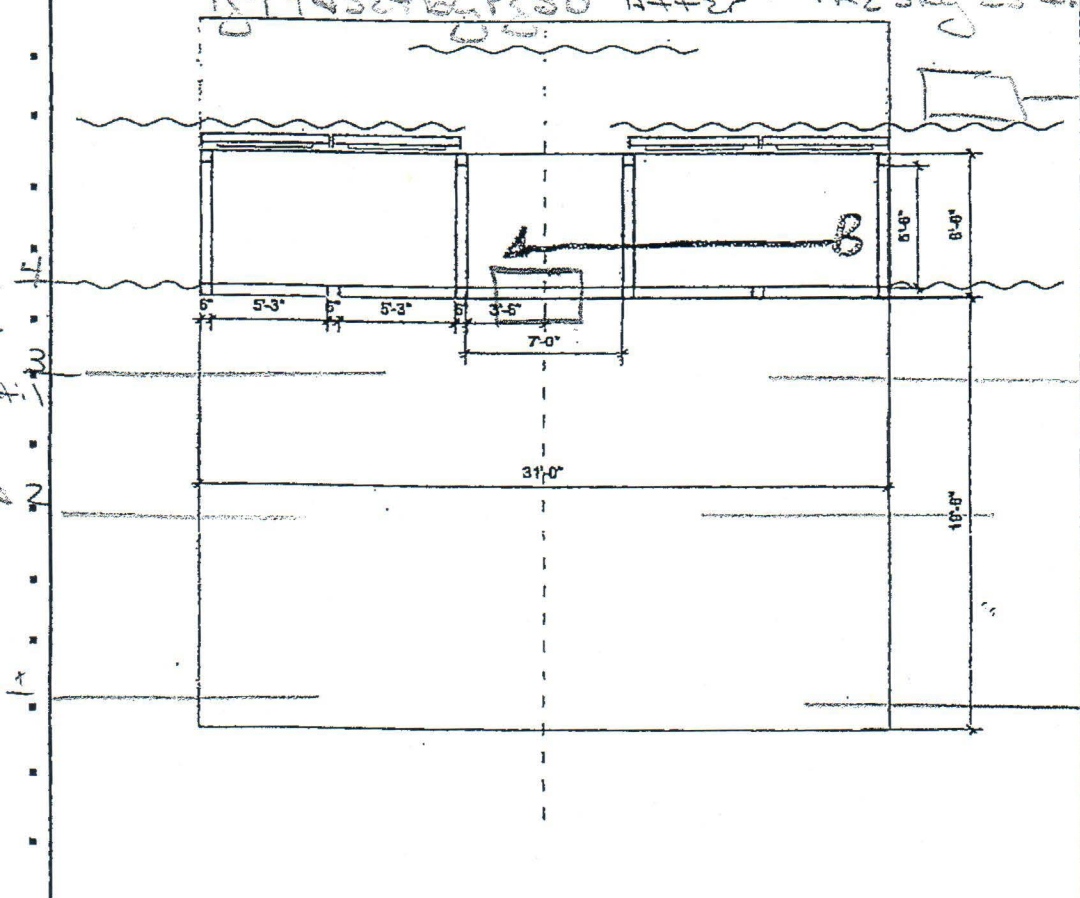
#15 Pg 49

USE + by P. 50 After the sky is calling

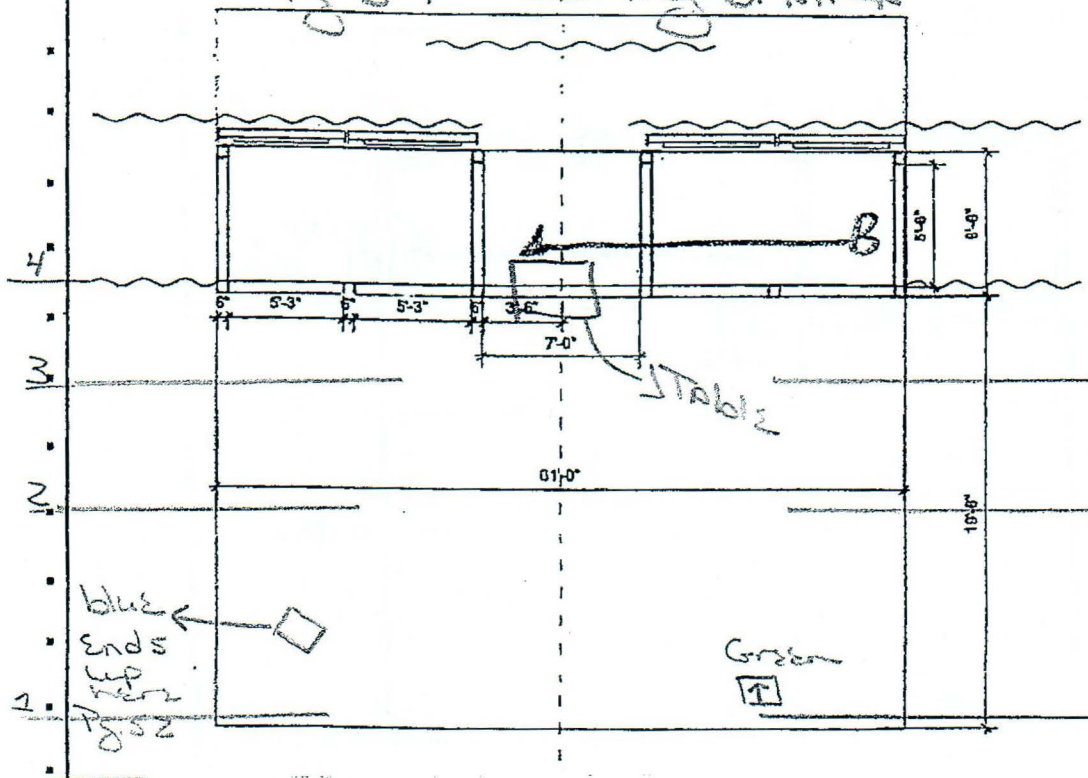
pink

table

\*  
orange  
green  
blue  
brown  
red  
motion  
end of  
rap until  
top of  
rap



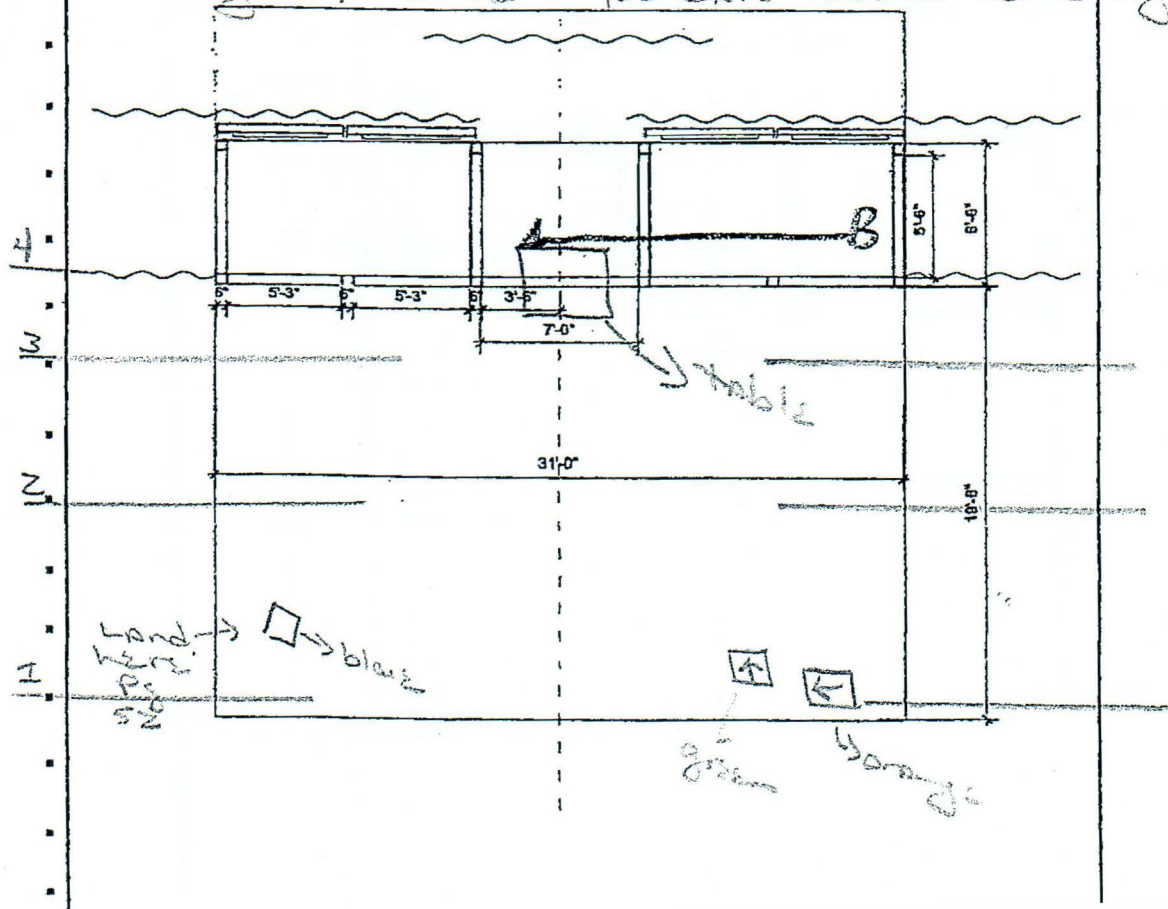
#16 Pg 51 During Drama



pink

orange

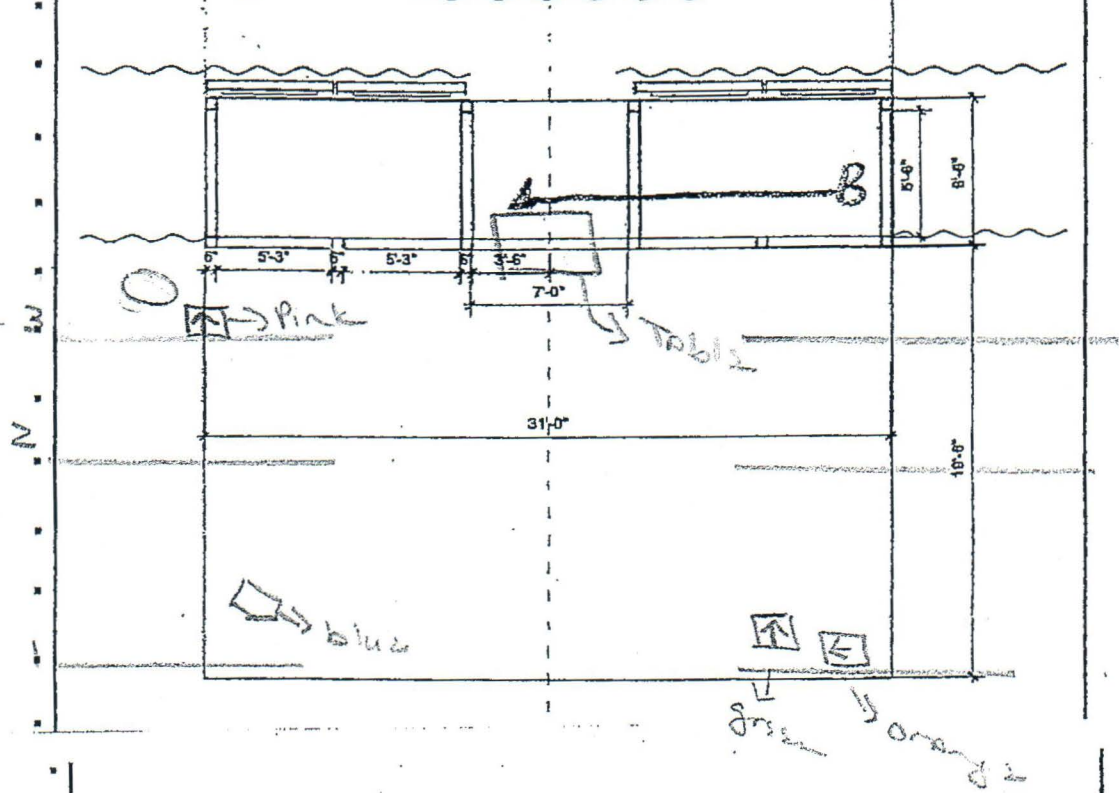
During Drama  
Pg. 51 After "You can't come home again"



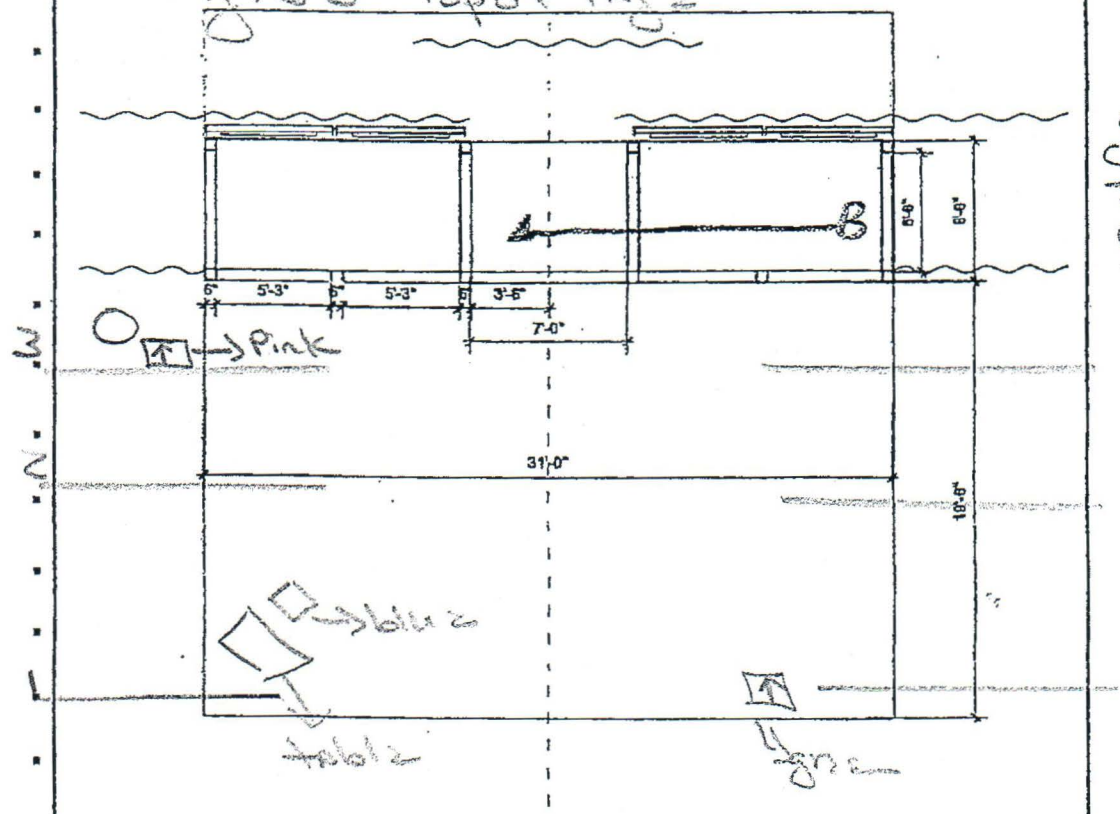
pink

green orange

During Drama  
Pg. 52 After maturity + old age



During Drama  
Pg. 53 TOP OF PAGE 2



Orange  
Change  
Stage W/  
Green



A hand-drawn floor plan of a building, likely a school or institutional structure, showing a central corridor and two main rooms. The plan includes the following dimensions and features:

- Overall Dimensions:**
  - Overall width: 31'-0"
  - Overall depth: 15'-6"
- Room Dimensions:**
  - Left room: 15'-0" wide by 15'-6" deep.
  - Right room: 15'-0" wide by 15'-6" deep.
- Corridor Dimensions:**
  - Central corridor width: 7'-0"
  - Side corridors (on either side of the central one): 3'-6"
- Room Features:**
  - Each room contains a rectangular table and two chairs.
  - Each room has a door on the right wall, labeled "8'0" ←" and "→ 8'0"
  - Each room has a window on the left wall, labeled "5'-3"
- Annotations:**
  - "Pink" is written near the left room's door.
  - "8'0" ←" and "→ 8'0"
  - "5'-3"
  - "7'-0"
  - "3'-6"
  - "15'-0"
  - "15'-6"
  - "31'-0"

A hand-drawn diagram of a boat layout, likely a motorboat, showing various dimensions and color-coded sections. The diagram is oriented horizontally. At the top, there are wavy lines representing water. The main body of the boat is divided into several sections. The leftmost section is labeled '6'-7\"

THE MEDIUM  
SPIKE MARKS  
02/02/2022  
CITY THEATRE  
PITTSBURGH, PA

Chair Track

Top of Show      all chairs stage right

THE MEDIUM  
02/02/2022  
CITY THEATRE  
PITTSBURGH, PA

---

Pg. 3      All on Stage

green on      V

orange on      El

pink on      SW

blue on      GM

---

Pg. 10      During Dionne

blue off Rt      E

Pink off Lft      V

green off rt      E

orange is on

---

Pg. 16      Into Coffee Talk

orange off Lft      V

green on (from rt)      E

orange back on (from lft)      V

blue is off rt

pink off Lft

---

**Pg. 20A**                      **Transition to Televangelist**

pink on (from Lft)                      G

Blue on from rt                      M

orange is on

green is on

---

**Pg. 27**                      **Transition into Newsbrief**

blue off rt                      M

pink off rt                      M

orange off rt                      G

green on

---

**Pg. 31**                      **During Knee Play #2**

green off left                      S

blue off rt

pink off rt

orange off rt



---

**Pg. 34                      Cooking Show into Western**

Blue chair on (from rt)            E

Orange chair on (from rt)       E

Pink off rt

Green off lft

---

**Pg. 37                      In to Ventriloquist**

Orange off rt                            G

Pink off rt

Green off left

Blue on

---

**Pg. 43                      Into Dating Game**

Blue off rt                                G

Green on (from lft)                  V

Green off rt                               V

Blue chair on (from rt)              S

Blue chair off lft                      S

Blue chair on (from lft)           S

Orange chair on (from Rt)        G

Green chair on (from rt) V

Pink chair on (from rt) E

So, End of Transition all 4 chairs are

---

Pg. 48 During top of Rap

orange off rt G

green off rt V

pink off lft E

blue off lft S

---

Pg. 50/51 Into The Drama

green on (from rt) V

blue chair on (from lft) E

orange on (from rt) G

then orange chair Off lft G

then pink on (from lft) G

So, pg. 51 end up w/blue, pink & green on and orange off left

---

Pg. 52

Pink chair on (from Lft) S

then pink chair off rt S

---

Pg. 54	pink chair (from lft)	G
then orange chair off (rt)	G	

---

---

Pg.55	Aria
blue chair off left	S
green chair off lft	V

---

---

Pg. 56	Techno
green chair on (from lft)	V
blue chair on (from left)	S
pink chair on (from Lft)	G
orange chair on (from rt)	
pink chair off rt	G
green chair off lft	V
pink chair on (from rt)	G
blue chair off lft	S
blue chair on (from lft)	S
green chair on (from lft)	V



## THE MEDIUM Flow Chart

Page #	Character	Action	Props	Notes
Places	Violeta Ellen GM Stephen	SR		
Places	Bondo	SL		
		<b>Introduction - Firing Line</b>		
3	M	Enter UL walkway	W/remote	
3	V	Enter R4	W/green chair	
3	E	Enter R4	W/orange chair & pill bottle #1	
3	S	Enter R3	W/pink chair & Pipe	
4	G	Enter R4	W/blue chair & eye patch	
		<b>Dionne</b>		
9	G	Exit R4		
9	G	Enter R3		Coat over shoulder
9	S	Exit L3	w/pipe	
9	M	Exit R3		

**CITY THEATRE  
PITTSBURGH, PA**

9	G	Exit R3		Behind M
9	S	Enter L4		
9	S	Exit L3 immediately		
9	E	Exit UR walkway		
9	M	Enter R2		
9	E	Enter UR walkway		
9	S	Enter L4		
9	G	Enter R4		
10	E	Exit R3	W/blue chair	
10	S	Exit L4		
10	M	Exit R4		
10	E	Enter R4		
10	M	Enter R2		
10	S	Enter L4		
10	M	Exit L2		
10	M	Enter L3		

10	S	Exit R4		
10	V	Exit L3	W/ Pink chair & costume piece	

10	E	Exit R4	W/green chair	

10	G	Exit L1	W/ his coat & E's costume pieces	Toss costumes on floor off left
		<b>Cyberspace Lounge</b>		
11	S	Enter UR walkway	W/slatted glasses & pipe	

		<b>Into Detective Drama</b>		
12	S	Exit UL walkway	W/slatted glasses & pipe	
12	G	Enter L3	w/table	

12	V	Enter L3	W/bottle & orange book	Behind G
12	G	Exit R3		
12	E	Enter R4		
12	E	Exit UR Walkway		
		<b>Detective Drama</b>		
13	V	Exit UL walkway w/ orange book		
13	E	Enter UR Walkway	W/cig. Holder, cat eyed glasses	



13	V	Enter UL walkway	w/binoculars	
13	E	Exit UL walkway	W/cig. Holder, cat eyed glasses	
14	V	Exit UR walkway	w/binoculars	Mars hand her trench coat
14	V			Toss M coat from UR walkway

14	G			Toss hat to M from R4

14	S	Enter L4	W/gold glasses & rubber apron & sailor hat	
14	G	Enter R4	W/slatted spoon, jacket & eye patch	
14	E	Enter UL walkway	W/pills #2 & cat eyed glasses	
15	V	Enter UR walkway	W/purse & prop gun & hanky	
		<b>Detective into Coffee Talk</b>		
16	S	Exit UL	W/ gun, M's hat & trench coat, V's skirt & slatted spoon, his hat, glasses and apron	
16	V	Exit L3	W/orange chair & purse & hanky	
16	E	Exit R4	W/cat eyed glasses	
16	E	Enter R4	W/green chair	
16	V	Enter L4	W/orange chair & black glasses	

			w/rhinestones	
16	M	Exit R3	w/remote	
16	G	Exit L4	W/coat, hat & bottle & eye patch	
18	M	Enter R4	w/remote	
		<b>Transition to Televangelist</b>		
20A	M	Exit R3		
20A	G	Enter L3	W/pink chair & 2 veils	
20A	M	Enter R3	W/blue chair & coat	
20A	S	Enter UL	w/Book	
22	V	Exit L3	w/veil	
22	E	Exit UL walkway	w/veil	
		<b>Knee Play #1 &amp; Family Show</b>		
23	M	Exit R3	w/coat	
23	S	Exit UL walkway	w/book	
23	M	Ent R3	w/sweater	
23	V	Enter L3	W/purple bowl & spoon	
23	S	Enter L3	W/gun & and hanky	
23	G	Exit UL walkway	w/pills	Give pills to Ellen, Get sweater from Ellen & put on, Ellen leave pills off stage
24	G	Enter UL walkway	w/sweater	Same time as E enters

24	E	Enter UL walkway		Same time as G enters
24				Lauren do knocks off visual & musically
24	E	Exit UL walkway		
24	G	Exit UL walkway	w/sweater	
24	G	Enter UL walkway	w/sweater	Same time as E enters
24	E	Enter UL walkway		Same time as G enters
25	V	Exit L2		
26	V	Enter L2	W/small green can	
26	V	Exit L2		
26	V	Ent L2 & exit L2**		**only stick head out to say one line then exit again
26	V	Enter L2	W/blue can	
26	V	Exit L2	W/small green can	
26	V	Enter L2	W/pink can	
27	V	Exit L2	W/blue can	
27	V	Enter L2	W/large green can	
		<b>Transition to News Brief</b>		
27	E	Exit UR walkway		
27	E	Enter UR walkway	W/clipboard & pencil	
27	M	Exit R4	W/blue & pink chair	



27	V	Exit L2	W/purple bowl & spoon w/a pink & green can in it.	Crew add a blue can to the purple bowl
27	V	Enter L4	W/umbrella & raincoat	
27	S	Exit UL walkway	W/gun and hanky	
27	S	Enter UL walkway	W/newscaster jacket	
27	G	Exit R4	W/orange chair	
27	G	Enter R4	W/jacket & pipe	
		<b>Top of News break</b>		
29	M	Enter R3	w/2 Cue cards & remote	
29	E	Exit UL walkway		
		<b>Knee Play #2</b>		
30	E	Enter UL walkway		
30	M	Exit R3	w/remote	
31	V	Exit L4	W/umbrella & poncho	
31	S	Exit L4	W/green chair, 2 cue cards, clipboard & pencil & sportscaster jacket	
31	M	Enter R4	W/apron, rag & remote	
31	V	Enter UL walkway	W/purple bowl w/ 3 cans (blue, pink & fat green), spoon & apron	
31	G	Exit L2	W/pipe & coat	
31	E	Exit R3		

		<b>End of Cooking Show</b>		
33	V	Exit L3	W/purple bowl w/ 3 cans (blue, pink & fat green), spoon & apron	
		<b>Cooking Show into Western</b>		
34	E	Enter R3	W/blue & orange chair & M's piano player hat	
34	G	Enter L3	W/cowboy hat, pipe & vest	
		<b>Western</b>		
34	V	Enter L3	W/green bowl w/bottle & 2 blue cans in it	
34	V	Exit L3 then reenter L3 quickly		
34	S	Enter UL walkway	W/cowboy hat & gun, serape & kerchief	
		<b>Western into Ventriloquist</b>		
37	G	Exit R3	W/orange chair, bottle & pipe	
37	V	Exit R3	W/green bowl w/ 2 blue cans in it	
37	S	X to UL walkway Then exit UR walkway (after hand off to Lauren)	W/table & gun & V's skirt	Hand off table & gun to Lauren Get costume bag from Lauren
37	E	Exit L4		
		<b>Ventriloquist</b>		
37	G	Enter UR walkway	W/ sparkly jacket &	Carrying V

			ruffly collar	
37	V	Enter UR walkway		G is carrying her
40	M	Exit L3	W/rag, apron & remote	
41	M	Enter L3	W/green can & remote & apron	
		<b>Transition into Dating game</b>		
43	S	Stick head out from UR walkway		Same time as E
43	E	Stick head out from UL walkway		Same time as S
43	S	Exit UR walkway		Same time as E
43	E	Exit UL walkway		Same time as E
43	G	Exit R3	W/blue chair	
43	M	Exit R 3	W/apron & can	Behind G
43	E	Enter UL walkway		
43	E	Exit UR walkway		
43	V	Exit L3		
43	E	Enter R4		
43	M	Enter R4		Behind E
43	V	Enter L3	W/green chair, purse & hanky	
43	E	Exit UR walkway		
43	M	Exit L4		
43	S	Enter UR walkway		
43	M	Enter L3 rowing		



43	S	Exit R2		
43	E	Enter UR walkway		
43	V	Exit R3	W/green chair, purse & hanky	
43	M	Exit R2		
43	S	Enter R4	W/blue chair	
43	E	Exit UR walkway		
43	M	Enter R4		
43	S	Exit L4	W/blue chair	
43	E	Enter UR walkway		
43	E	Exit R4		
43	M	Exit R4		Behind E Ditch apron
43	S	Enter L3	W/blue chair	
43	M	Enter R4		
43	S	Exit R3		
43	M	Exit R3		
43	M	Enter R4		
43	E	Enter R4		Behind M
43	E	Exit R3		
43	M	Exit R3		Behind E
43	G	Enter UR walkway	W/orange chair	
43	V	Enter UR walkway	W/green chair, purse & hanky	

43	E	Enter UR walkway	W/pink chair	
43	M	Enter R4		

		<b>Dating Game</b>		
Pg. 44	S	Enter UR Walkway	W/check jacket	
		<b>RAP</b>		
48	G	Exit R4	W/ orange chair	
48	V	Exit R3	W/green chair	
48	E	Exit L4	W/pink chair	
48	S	Exit L3	W/blue chair	
48	S	Enter L3		
48	V	Enter R3		
49	E	Enter L2		
49	G	Enter R3		
		<b>Into The Drama</b>		
49	V	Exit R2		
49	S	Exit UL walkway		
49	S	Enter UL walkway	w/table	
49	E	Exit L3		
49	S	Exit UL walkway		
49	G	Exit R3	W/MM's glasses	
		<b>After phone rings &amp; music softens end of Rap</b>		
50	V	Enter R4	W/green chair	
50	E	Enter L4	W/blue chair	

		<b>The Drama</b>		
50	S	Enter UL walkway	W/clipboard	
50	S	Exit UR walkway	w/clipboard	
50	S	Enter UR walkway	w/clipboard	
50	G	Enter R4	W/orange chair	
50	E	Exit R4	W/blue chair	
50	E	Reenter R3	W/blue chair	
52	S	Exit L4	w/clipboard	
52	S	Enter L4	W/pink chair	
52	S	Exit R4	W/pink chair	
52	V	Exit L3		
53	G	Exit L1	W/orange chair	
54	E	Exit R3		
54	G	Enter L4	W/orange chair	
54	G	Exit R4	W/orange chair	
		<b>ARIA</b>		
55	S	Enter R3		
55	S	Exit UL walkway	W/blue chair	
55	V	Enter L3		
55	V	Exit L4	W/green chair	
55	G	Enter R2		
55	G	Exit R3	w/table	
		<b>Techno</b>		



56	V	Enter L3	W/green chair	
56	S	Enter L3	W/blue chair	
56	G	Enter R3	W/pink chair	
56	E	Enter R3	W/orange chair	
56	G	Exit R4	W/pink chair	
56	V	Exit L3	W/green chair	
56	V	Enter L3		
56	G	Enter R3	W/pink chair	
56	S	Exit L4	W/ blue chair	
56	S	Enter L4		
56	G	Exit R3		
56	G	Enter R3	w/table	
56	V		Get umbrella UL	From Lauren
56	V		Hand off umbrella & get green bowl w/ apron	
56	G	Exit L4		
56	G	Enter L4		
56	S	Exit UL walkway		
56	V			Toss apron off L3
56	S	Enter UL walkway		
56	S	Exit R4	W/green bowl	
56	S	Enter R4		
56	V	Exit L4		

56	S	Exit L3	w/table	
56	S	Enter L3	W/blue chair	
56	V	Enter L4	W/green chair	
56	M	Exit UL walkway		
56	M	Enter UL Walkway		